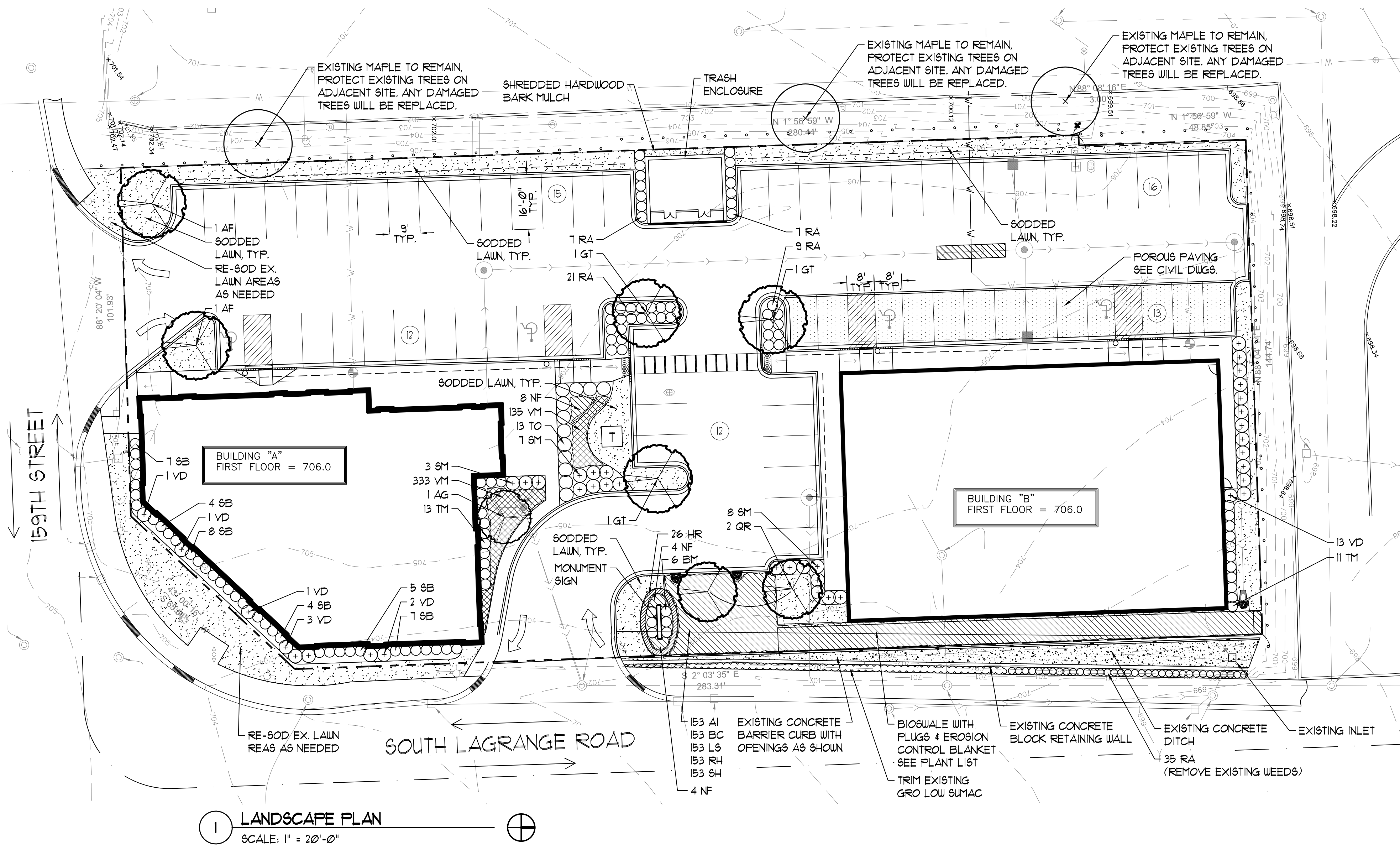


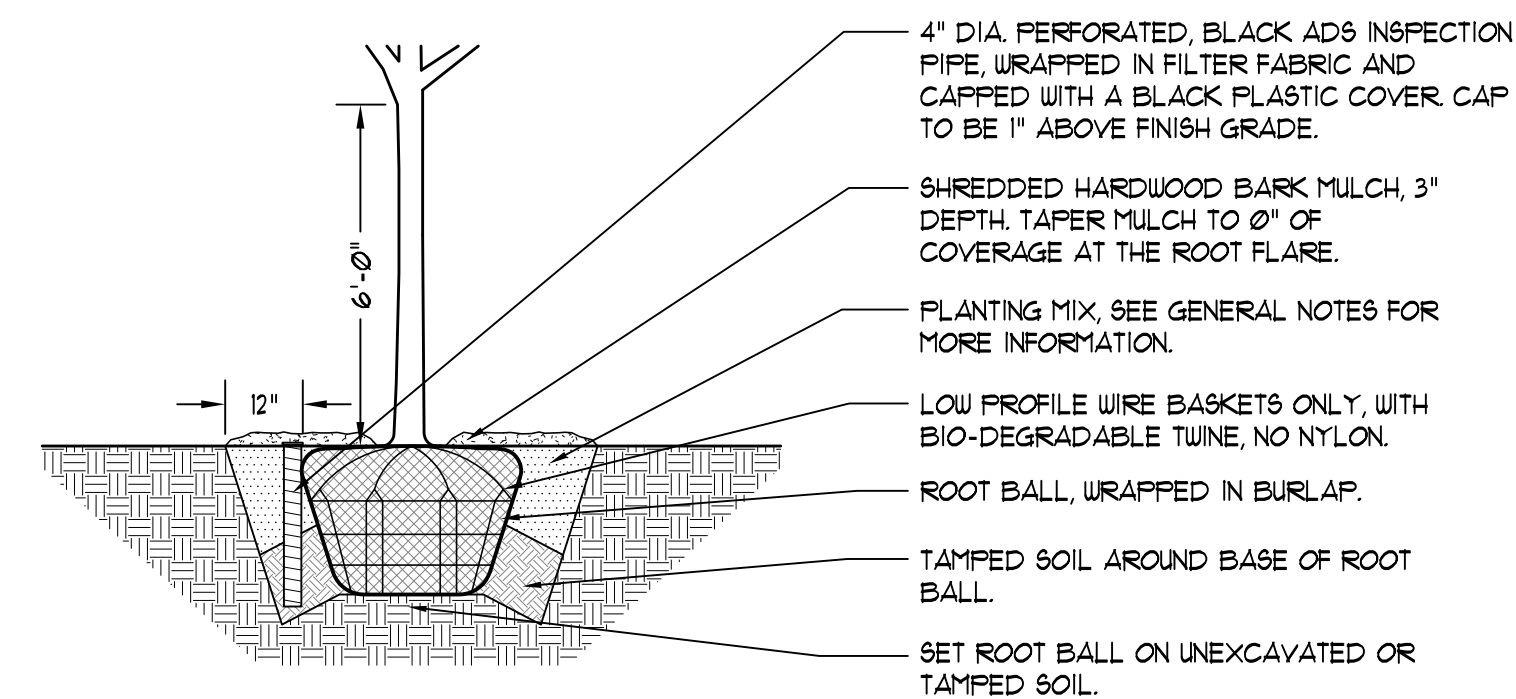
PLANT LIST						
CODE	BOTANICAL NAME	COMMON NAME	SIZE	ROOT	TOTAL	ADDITIONAL NOTES
DECIDUOUS TREES						
AF	ACER x FREEMANII 'AUTUMN BLAZE'	AUTUMN BLAZE MAPLE	3" CALIFER	B 4 B	2	BRANCHED UP 6'
GT	GLIEDITSIA TRI. VAR. INERMIS 'SKYLINE'	SKYLINE HONEYLOCUST	3" CALIFER	B 4 B	3	BRANCHED UP 6'
QR	QUERCUS ROBUR 'REGAL PRINCE'	REGAL PRINCE ENGLISH OAK	3" CALIFER	B 4 B	2	BRANCHED UP 6'
ORNAMENTAL TREES						
AG	AMELANCHIER x G. 'AUTUMN BRILLIANCE'	SERVICEBERRY	8' HEIGHT	B 4 B	1	
DECIDUOUS SHRUBS						
RA	RHUS AROMATICA 'GRO-LOW'	GRO-LOW SUMAC	3 GALLON	CONTAINER	19	
SB	SPIRAEA BETULIFOLIA 'TOR'	TOR BIRCHLEAF SPIREA	30" HEIGHT	B 4 B	35	
SM	SYRINGA MEYER 'PALIBIN'	DUARF KOREAN LILAC	30" HEIGHT	B 4 B	18	
VD	VIBURNUM DENTATUM 'CHRISTOM'	BLUE MUFFIN VIBURNUM	36" HEIGHT	B 4 B	21	
EVERGREEN SHRUBS						
BM	BUXUS 'GLENCEOE'	CHICAGOLAND GREEN BOXWOOD	24" HT 4 SPD	B 4 B	6	
TM	TAXUS x MEDIA 'RUNYAN'	RUNYAN DENSE YEU	24" SPREAD	B 4 B	24	
TO	THUJA OCCIDENTALIS 'TECHNY'	TECHNY ARBORVITAE	4' HT	B 4 B	13	
PERENNIALS, ORNAMENTAL GRASSES AND GROUNDCOVERS						
AI	ASCLEPIAS INCARNATA	SWAMP MILKWEED	PLUGS		153	SPACED 18" O.C.
BC	BOUTELOUA CURTIPENDULA	SIDEOLATS GRAMA	PLUGS		153	SPACED 18" O.C.
HR	HEMEROCALLIS 'HAPPY RETURNS'	HAPPY RETURNS DAYLILLY	1 GALLON	CONTAINER	26	SPACED 18" O.C.
L6	LIATRIS SPICATA	BLAZING STAR	PLUGS		153	SPACED 18" O.C.
NF	NEPETA x FAASSENII	FAASSEN'S CATMINT	1 GALLON	CONTAINER	16	SPACED 24" O.C.
SB	SCHIZACHYRIUM SCOPARIUM	LITTLE BLUESTEM	PLUGS		153	SPACED 18" O.C.
VH	VERBENA HASTATA	BLUE VERVAIN	PLUGS		153	SPACED 18" O.C.
VM	VINCA MINOR 'DART'S BLUE'	DART'S BLUE PERIWINKLE	3" POT	FROM FLATS	468	SPACED 10" O.C.

GENERAL NOTES

- ALL DIMENSIONS ARE TO BE VERIFIED IN THE FIELD BY THE CONTRACTOR. NOTIFY THE LANDSCAPE ARCHITECT OF ANY DISCREPANCIES PRIOR TO STARTING WORK.
- THE CONTRACTOR SHALL HAVE A MINIMUM OF FIVE YEARS EXPERIENCE WITH PROJECTS OF SIMILAR SIZE AND TYPE.
- SPECIES AND SIZES OF PLANTS LISTED IN THE PLANT LIST ARE SUBJECT TO AVAILABILITY AT TIME OF INSTALLATION. IF SUBSTITUTIONS ARE REQUIRED, THE CONTRACTOR SHALL SUBMIT REQUESTS TO THE LANDSCAPE ARCHITECT FOR APPROVAL.
- QUANTITIES SHOWN ON THE DRAWING AND IN THE PLANT LIST ARE PROVIDED ONLY FOR THE CONTRACTOR'S CONVENIENCE. THE NUMBER OF PLANT SYMBOLS SHOWN ON THE DRAWINGS SUPERCEDE ALL QUANTITIES PROVIDED. THE CONTRACTOR SHALL VERIFY ALL PLANT QUANTITIES ON THE DRAWINGS AND NOTIFY THE LANDSCAPE ARCHITECT OF ANY DISCREPANCIES PRIOR TO INSTALLATION. THE CONTRACTOR IS RESPONSIBLE FOR INSTALLING ALL PLANTS PER THE PLANT SYMBOLS SHOWN ON THE DRAWINGS.
- ALL OVERHEAD AND UNDERGROUND UTILITIES ARE TO BE LOCATED PRIOR TO DIGGING OR EXCAVATION. IF UTILITIES OR OTHER OBSTRUCTIONS ARE DISCOVERED TO CONFLICT WITH GRADING, PLANT OR MATERIALS PLACEMENT, NOTIFY THE LANDSCAPE ARCHITECT SO THAT ADJUSTMENTS MAY BE MADE PRIOR TO PROCEEDING.
- CONTRACTOR SHALL TAKE ALL PRECAUTIONS TO PROTECT EXISTING PLANTS, LAWN AREA, FENCES, SITE FEATURES AND PAVING TO REMAIN. ANY DAMAGE TO THESE EXISTING AREAS OR FEATURES SHALL BE REPLACED BY THE CONTRACTOR AT THEIR EXPENSE. DAMAGED LAWN AREAS SHALL BE TILLED, RE-GRADED, TOPSOIL ADDED AS NEEDED AND BE RESTORED WITH SOD. REPLACED FEATURES, PLANTS AND SOD SHALL BE WARRANTED BY THE CONTRACTOR FOR A PERIOD OF ONE YEAR.
- PROVIDE POSITIVE DRAINAGE AT ALL TIMES. DO NOT OBSTRUCT THE NATURAL OR ENGINEERED DRAINAGE FLOW PATTERN. NOTIFY THE LANDSCAPE ARCHITECT OF ANY DRAINAGE CONCERNS.
- IMPORTED TOPSOIL FOR THIS PROJECT SHALL BE FRIABLE LOAM OR SANDY LOAM, COMPRISED OF BETWEEN 20% AND 50% SILT, 10% AND 25% CLAY, AND 30% AND 60% SAND. THE PH LEVEL SHALL BE BETWEEN 6.0 AND 12 AND THE ORGANIC MATTER CONTENT SHALL BE BETWEEN 3% AND 6%. TOPSOIL SHALL BE FREE OF SEEDS, STONES, LARGE CLUMPS, ROOTS, LEAVES AND DEBRIS, AND SHALL NOT BE DELIVERED WHILE IN A FROZEN OR MUDDY CONDITION. CONTRACTOR SHALL PROVIDE A RECENT SOIL TEST ANALYSIS FOR ALL SOIL TO BE USED. THE ANALYSIS MUST INCLUDE THE INFORMATION REQUIRED ABOVE. IF TESTED TOPSOIL REQUIRES AMENDMENTS TO COMPLY WITH REQUIREMENTS, CONTRACTOR SHALL AMEND THE TOPSOIL, RE-TEST AND RESUBMIT THE ANALYSIS FOR APPROVAL PRIOR TO BRINGING THE TOPSOIL ON SITE.
- SOD SHALL BE A TALL FESCUE BLEND SOD, SUCH AS RHIZOMATOUS TALL FESCUE (RTF) BLACK BEAUTY OR APPROVED EQUAL. BLUEGRASS BLEND SOD IS NOT ACCEPTABLE, UNLESS APPROVED BY THE LANDSCAPE ARCHITECT.
- ALL PLANT MATERIAL MUST BE SPECIMEN QUALITY, TRUE TO SPECIES AND VARIETY, WITH FULL, DENSE AND HEALTHY FORMS. PLANTS THAT ARE NOT SPECIMEN QUALITY WILL NOT BE ACCEPTED. ALL PLANTS MUST HAVE BEEN LOCALLY GROWN AT A STATE INSPECTED AND CERTIFIED NURSERY, LOCATED WITHIN 50 MILES OF THE PROJECT SITE.
- ALL TREES SHALL BE INSPECTED BY THE LANDSCAPE ARCHITECT, AT THE NURSERY, PRIOR TO DIGGING. TREES THAT ARE ACCEPTABLE WILL BE SEALED. ALL SEALS APPLIED BY THE LANDSCAPE ARCHITECT MUST REMAIN ON THE TREES AND ARE NOT TO BE REMOVED BY THE CONTRACTOR. ALL TREES MUST HAVE SEALS IN PLACE AT TIME OF ACCEPTANCE OR WILL BE AUTOMATICALLY REJECTED. HEELED-IN TREES WILL NOT BE ACCEPTED WITHOUT PRIOR APPROVAL FROM THE LANDSCAPE ARCHITECT.
- ALL SHRUBS 36" HEIGHT OR TALLER ARE TO BE APPROVED BY THE LANDSCAPE ARCHITECT PRIOR TO INSTALLATION. AN EXAMPLE SHRUB MAY BE TAGGED OR PICTURED MAY BE SUBMITTED FOR APPROVAL. ALL SHRUBS THAT DO NOT MATCH THE APPROVED EXAMPLE SHRUB IN SIZE AND FORM WILL BE REJECTED. ALL OTHER SHRUBS MUST MEET THE MINIMUM SIZES GIVEN IN THE PLANT LIST AND BE SPECIMEN QUALITY. SHRUBS THAT DO NOT MEET THESE GUIDELINES WILL BE REJECTED.
- PLANT MATERIAL SHALL ONLY BE INSTALLED WITHIN THE FOLLOWING DATES:
DECIDUOUS TREES AND SHRUBS: APR 1 THROUGH NOV 15
SPRING DIG DECIDUOUS TREES: APR 1 THROUGH OCT 15
EVERGREEN TREES AND SHRUBS: APR 1 THROUGH NOV 1
PERENNIALS AND GROUNDCOVERS: MAY 1 THROUGH OCT 15.
- TEST TREE PITS AND PLANT BEDS FOR ADEQUATE DRAINAGE. FILL PLANT PIT WITH 12" OF WATER. IF WATER LEVEL DOES NOT DROP A MINIMUM OF ONE INCH PER HOUR, NOTIFY THE LANDSCAPE ARCHITECT OF DRAINAGE ISSUES.
- PLANTING MIX FOR ALL PLANTINGS SHALL BE AS FOLLOWS. MIXING OF PLANTING MIX COMPONENTS SHALL BE THOROUGHLY BLENDED OUTSIDE THE PLANTING PITS, PRIOR TO PLANTING.
TREES AND SHRUBS: 80% TOPSOIL, 10% SAND, 10% PINE FINES
PERENNIALS AND ANNUALS: 10% TOPSOIL, 15% SAND, 15% PINE FINES
- FOR PLANTING MIXES, SAND SHALL BE ANGULAR, COARSE SAND AND PINE FINES SHALL BE 3/8" SOUTHERN PINE BARK FINES.
- EXCAVATE PARKING LOT ISLANDS AND CURBED PLANTERS TO A DEPTH OF 24" AND BACKFILL WITH TOPSOIL. BERTY PLANTERS AND ISLANDS TO A HEIGHT OF 6" ABOVE TOP OF CURB.
- ALL PLANT BEDS ARE TO BE WELL SHAPED 'SPADE CUT' EDGES, 3" DEPTH, IN LINES OR IN CURVES AS SHOWN ON THE DRAWINGS.
- THE CONTRACTOR SHALL REQUEST AN INSPECTION OF LANDSCAPE PLANTING UPON SUBSTANTIAL COMPLETION FOR "ACCEPTANCE". REQUEST MUST BE SUBMITTED TO LANDSCAPE ARCHITECT AT LEAST TEN DAYS PRIOR TO ANTICIPATED INSPECTION. UPON INSPECTION THE LANDSCAPE ARCHITECT SHALL PREPARE A PUNCH LIST OF UNACCEPTABLE OR OUTSTANDING ITEMS. AFTER THE ITEMS HAVE BEEN SATISFACTORILY COMPLETED AND REVIEWED, THE LANDSCAPE ARCHITECT WILL RECOMMEND "ACCEPTANCE".
- ALL PLANT MATERIAL SHALL BE GUARANTEED FOR A PERIOD OF ONE YEAR FROM DATE OF "ACCEPTANCE". AT OR NEAR THE END OF THE GUARANTEE PERIOD, THE CONTRACTOR SHALL REQUEST AN INSPECTION OF LANDSCAPE PLANTING FOR "FINAL ACCEPTANCE". REQUEST MUST BE SUBMITTED TO LANDSCAPE ARCHITECT AT LEAST TEN DAYS PRIOR TO ANTICIPATED INSPECTION. UPON INSPECTION THE LANDSCAPE ARCHITECT SHALL PREPARE A PUNCH LIST OF UNACCEPTABLE ITEMS. AFTER THE ITEMS HAVE BEEN SATISFACTORILY REPLACED OR REPAIRED, REVIEWED AND APPROVED, THE LANDSCAPE ARCHITECT WILL RECOMMEND "FINAL ACCEPTANCE".

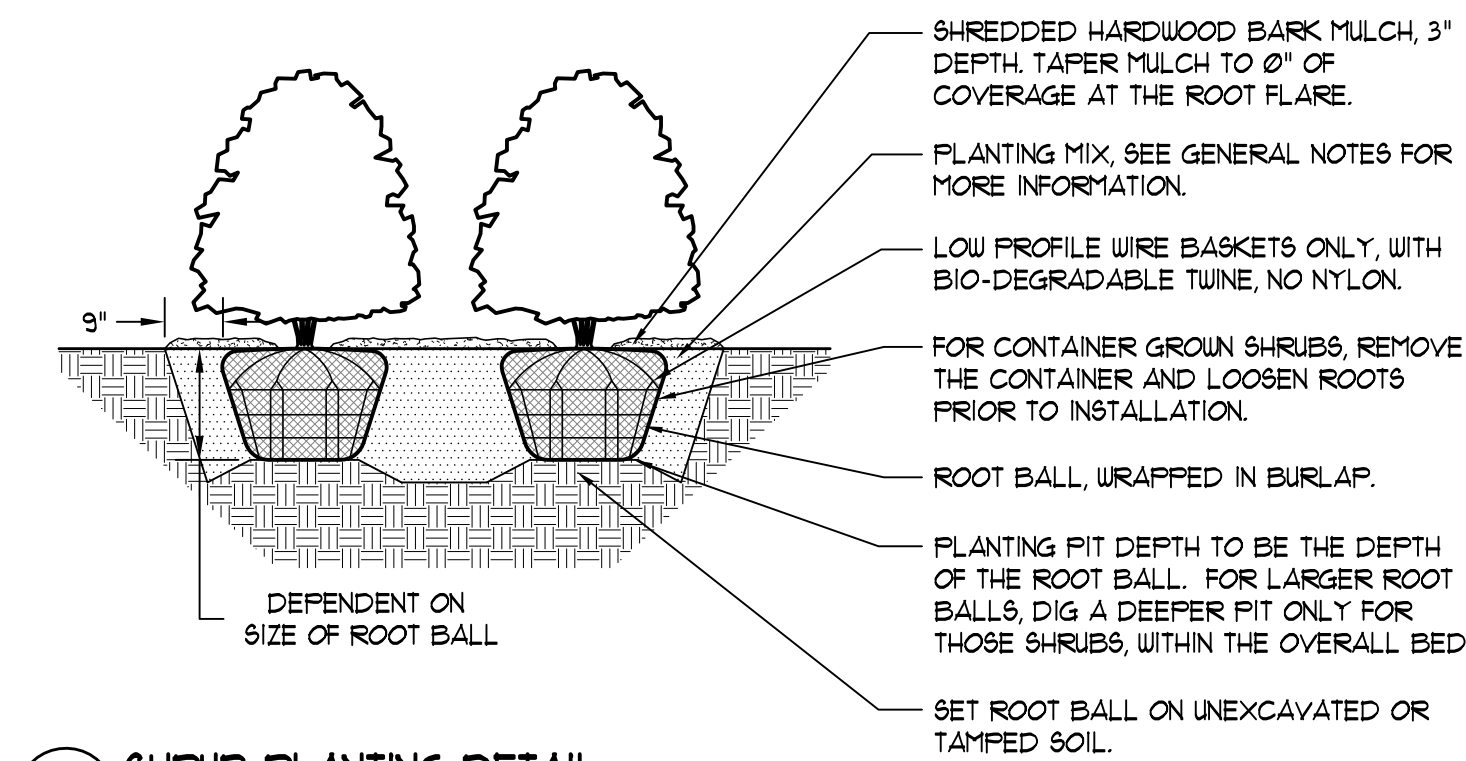


LOCATE ALL UNDERGROUND UTILITIES PRIOR TO DIGGING. TREE PIT WIDTH TO BE EXTENDED 12" AROUND THE ENTIRE ROOT BALL AS SHOWN IN THE DETAIL BELOW. TEST TREE PIT FOR DRAINAGE PRIOR TO INSTALLING TREE. PRUNE OFF ALL DEAD, BROKEN OR SCARRED BRANCHES, AND SHAPE PRUNE AS DIRECTED BY THE LANDSCAPE ARCHITECT. FOR TREES UP TO 4" CALIFER OR 12' HEIGHT, REMOVE APPROXIMATELY 5% - 10% OF THE OVERALL BRANCHING. FOR TREES OVER 4" CALIFER OR 12' HEIGHT, REMOVE APPROXIMATELY 15% - 20% OF THE OVERALL BRANCHING. LOCATE ROOT FLARE IN ROOT BALL AND SET TREE HEIGHT SO THAT ROOT FLARE IS FLUSH WITH FINISH GRADE. WATER IN THE PLANTING MIX THOROUGHLY, WHILE KEEPING THE TREE FLUMB. STRAIGHTEN TREE IF SETTLING OCCURS. CONTRACTOR TO UN-TIE AND REMOVE TWINE FROM AROUND ROOT FLARE OF TREE AT THE END OF THE WARRANTY PERIOD.



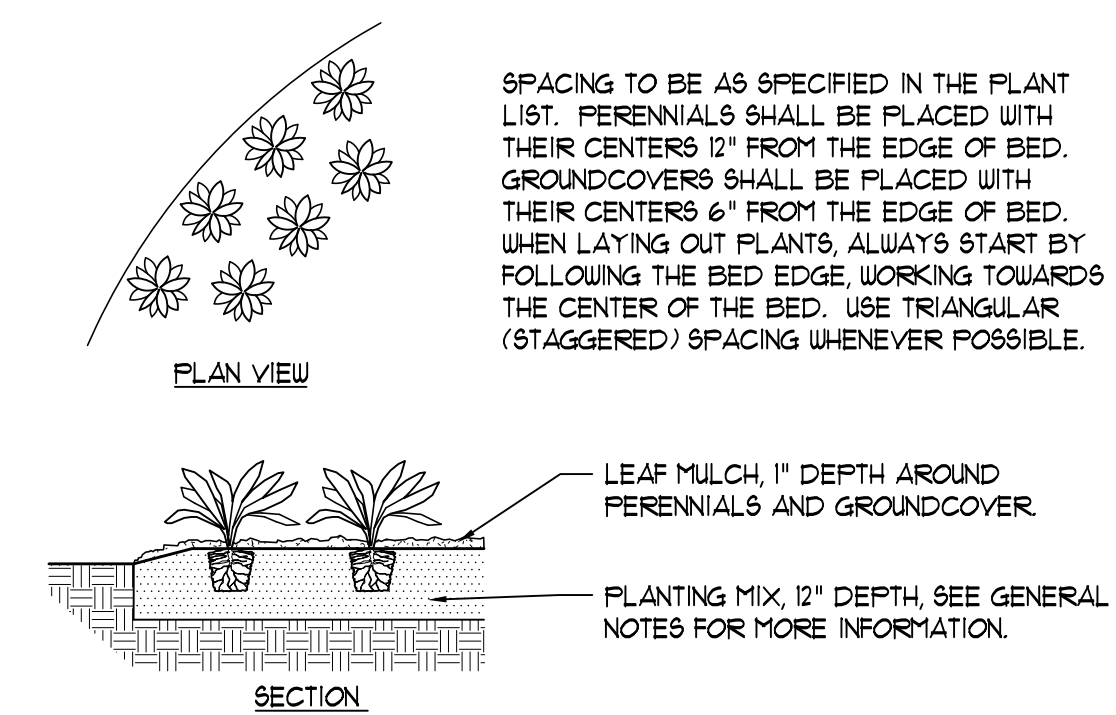
2 DECIDUOUS TREE PLANTING DETAIL
NOT TO SCALE

LOCATE ALL UNDERGROUND UTILITIES PRIOR TO DIGGING. SHRUB PIT WIDTH TO BE EXTENDED 9" AROUND THE ENTIRE ROOT BALL AS SHOWN IN THE DETAIL BELOW. TEST SHRUB PIT FOR DRAINAGE PRIOR TO INSTALLING SHRUB. PRUNE OFF ALL DEAD, BROKEN OR SCARRED BRANCHES, AND SHAPE PRUNE AS DIRECTED BY THE LANDSCAPE ARCHITECT. LOCATE ROOT FLARE IN ROOT BALL AND SET SHRUB HEIGHT SO THAT ROOT FLARE IS FLUSH WITH FINISH GRADE. WATER IN THE PLANTING MIX THOROUGHLY, WHILE KEEPING THE SHRUB FLUMB. STRAIGHTEN SHRUB IF SETTLING OCCURS. MULCH LIMITS FOR SHRUBS TO EXTEND TO ALL EDGES OF PLANTING BEDS. SEE PLANS FOR BED LAYOUTS. CONTRACTOR TO UN-TIE AND REMOVE TWINE FROM AROUND ROOT FLARE AT THE TIME OF PLANTING.

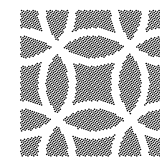


3 SHRUB PLANTING DETAIL
NOT TO SCALE

LOCATE ALL UNDERGROUND UTILITIES PRIOR TO DIGGING. EXCAVATE ENTIRE PERENNIAL / GROUNDCOVER BED, AND BACKFILL WITH PLANTING MIX AS SPECIFIED. BED HEIGHT IS TO BE 2" ABOVE FINISH GRADE AND WELL DRAINED. MULCH LIMITS FOR PERENNIAL BEDS TO EXTEND TO ALL EDGES OF THE BEDS. SEE PLANS FOR BED LAYOUTS. SEE PLANT LIST FOR PLANT SPACING. GAPS BETWEEN PLANTS SHALL BE NO GREATER THAN THE SPECIFIED SPACING FOR THAT PARTICULAR PLANT.



4 PERENNIAL AND GROUNDCOVER PLANTING DETAIL
NOT TO SCALE



DANIEL WEINBACH & PARTNERS, LTD.

Landscape Architects

53 W. Jackson Blvd.
Suite 250
Chicago, IL 60604

312 427-2888
www.dwpd.com

BOARD APPROVED

Case No: 2015-0066
Date: 4/18/16
W/Conditions: ☒
W/Out Conditions: ☐

VILLAGE OF ORLAND PARK

Revisions

8.		
7.		
6.	REVISED PER VILLAGE COMMENTS	07/27/16
5.	REVISIONS PER OWNER	04/21/16
4.	REVISED PER VILLAGE COMMENTS	04/01/16
3.	ISSUED FOR REVIEW	02/26/16
2.	ISSUED FOR REVIEW	01/04/16
1.	ISSUED FOR OWNER REVIEW	10/06/15

Project

RETAIL DEVELOPMENT

159TH STREET & LAGRANGE
ORLAND PARK, ILLINOIS

Sheet Title

LANDSCAPE PLAN

Date 10/06/15	Project No. DWP 15-176
Scale 1" = 20'-0"	Sheet No.
Drawn By EB	L-1.0
Approved WS	