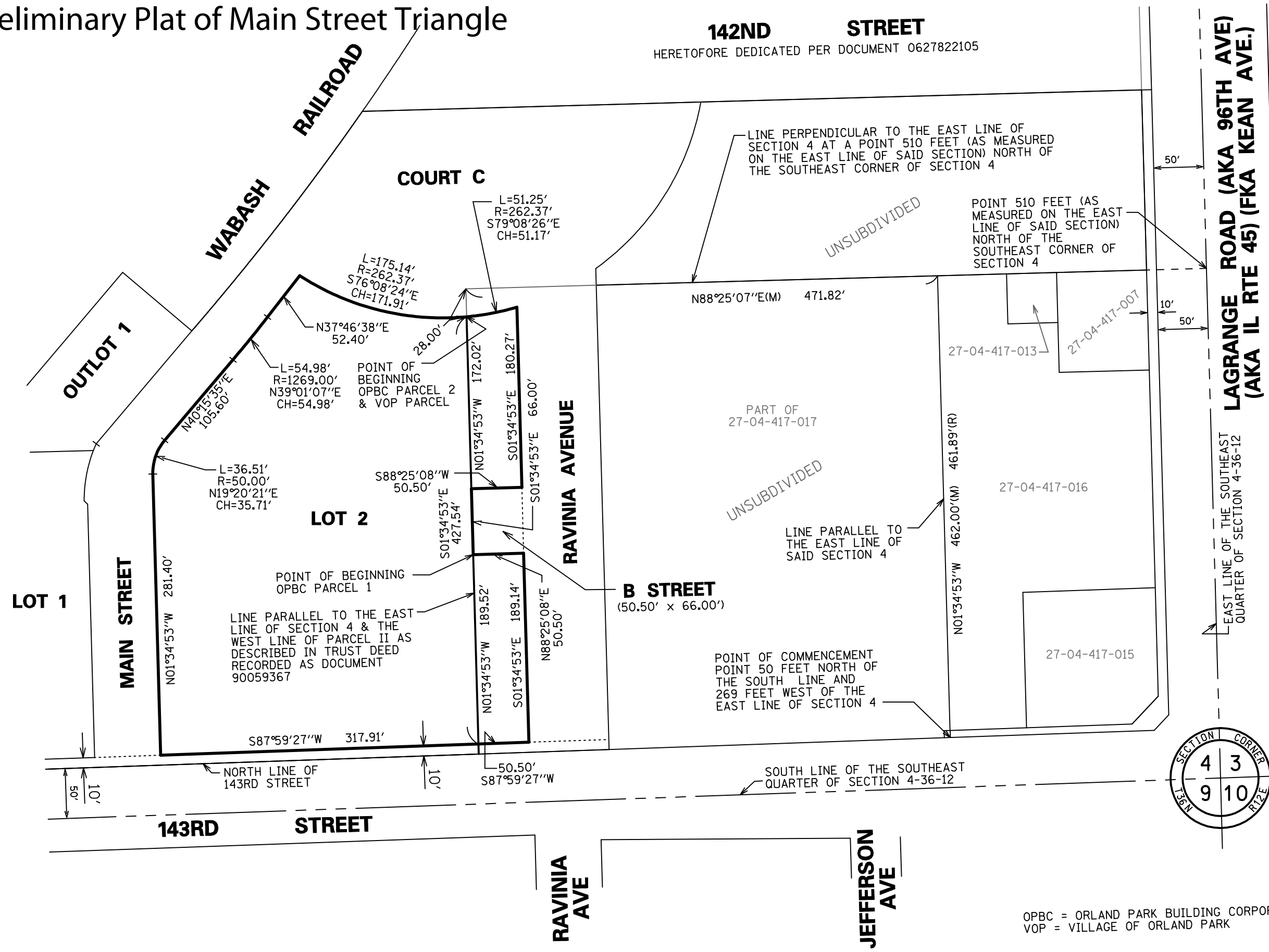


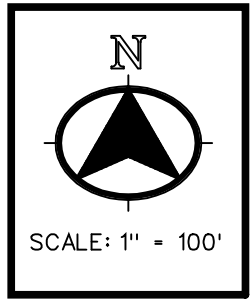
EXHIBIT A-2

Preliminary Plat of Main Street Triangle



DATE:	07/22/2011
JOB NO:	4278
FILENAME:	4278-EXB02

CONSULTING ENGINEERS	9575 W. Higgins Road, Suite 700,
SITE DEVELOPMENT ENGINEERS	Rosemont, Illinois 60018
LAND SURVEYORS	Phone: (847) 696-4060 Fax: (847) 696-4065



REVISIONS:	

OPBC = ORLAND PARK BUILDING CORPORATION
VOP = VILLAGE OF ORLAND PARK