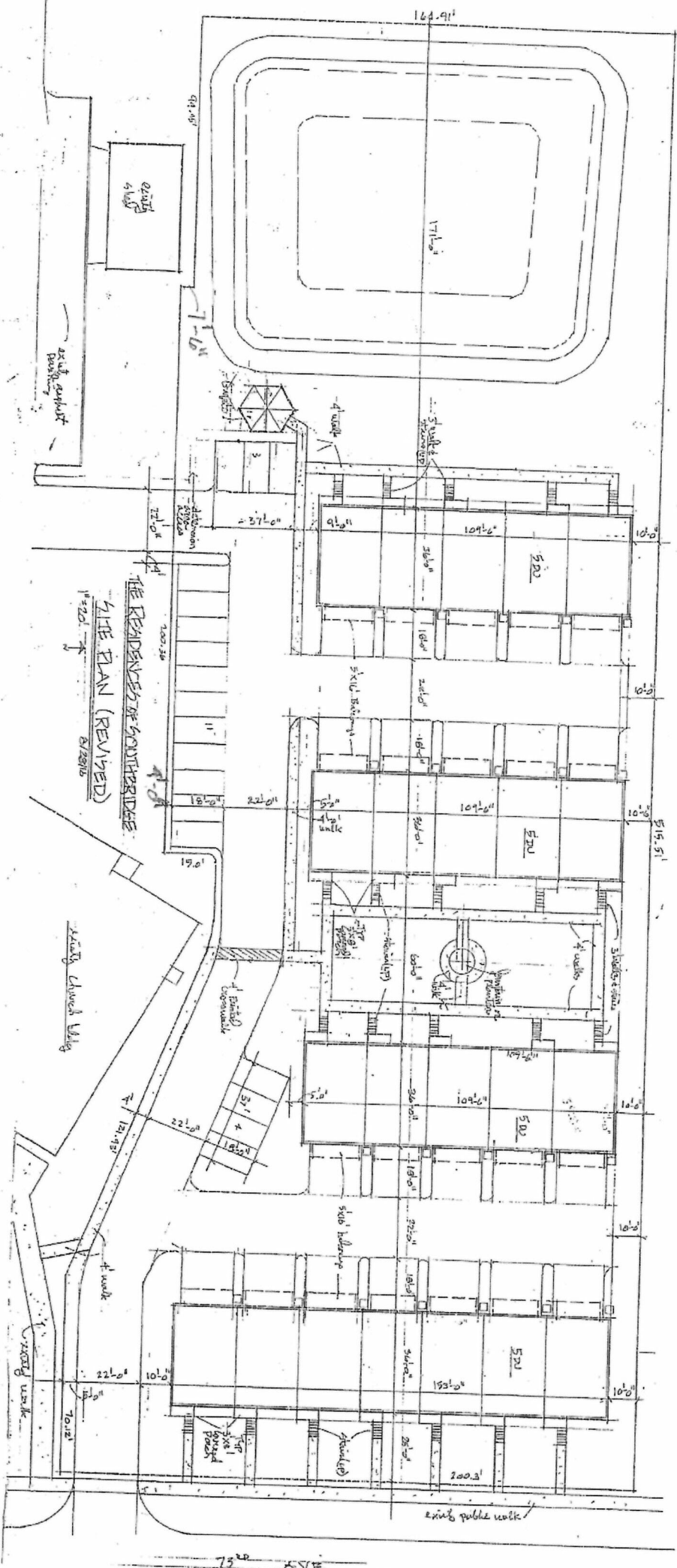


# THE RESIDENCES OF SOUTHBRIDGE

**SITE DATA**  
 TOTAL SITE AREA = 2.955 ACRES  
 DETENTION AREA TO TOP OF BERM = 0.378 ACRES  
 TOTAL LAND AREA (NOT INCLUDING DETENTION) = 1.877 ACRES  
 NUMBER OF DWELLING UNITS = 22  
 NUMBER OF DWELLING UNITS PER ACRE (NOT INCLUDING DETENTION) = 12.12  
 NUMBER OF DWELLING UNITS PER ACRE (INCLUDING DETENTION) = 10.78  
 IMPERVIOUS (NOT INCLUDING DETENTION) = 1.984 ACRES (64.65%)  
 IMPERVIOUS (INCLUDING DETENTION) = 1.197 ACRES (58.25%)  
 NUMBER OF CAR PARKING:  
 - EXTERIOR = 14  
 - GUEST PARKING = 18



REVISED SITE PLAN

9/12/16

PAUL SWANSON

APPEARANCE REVIEW APPROVED 12/5/16

