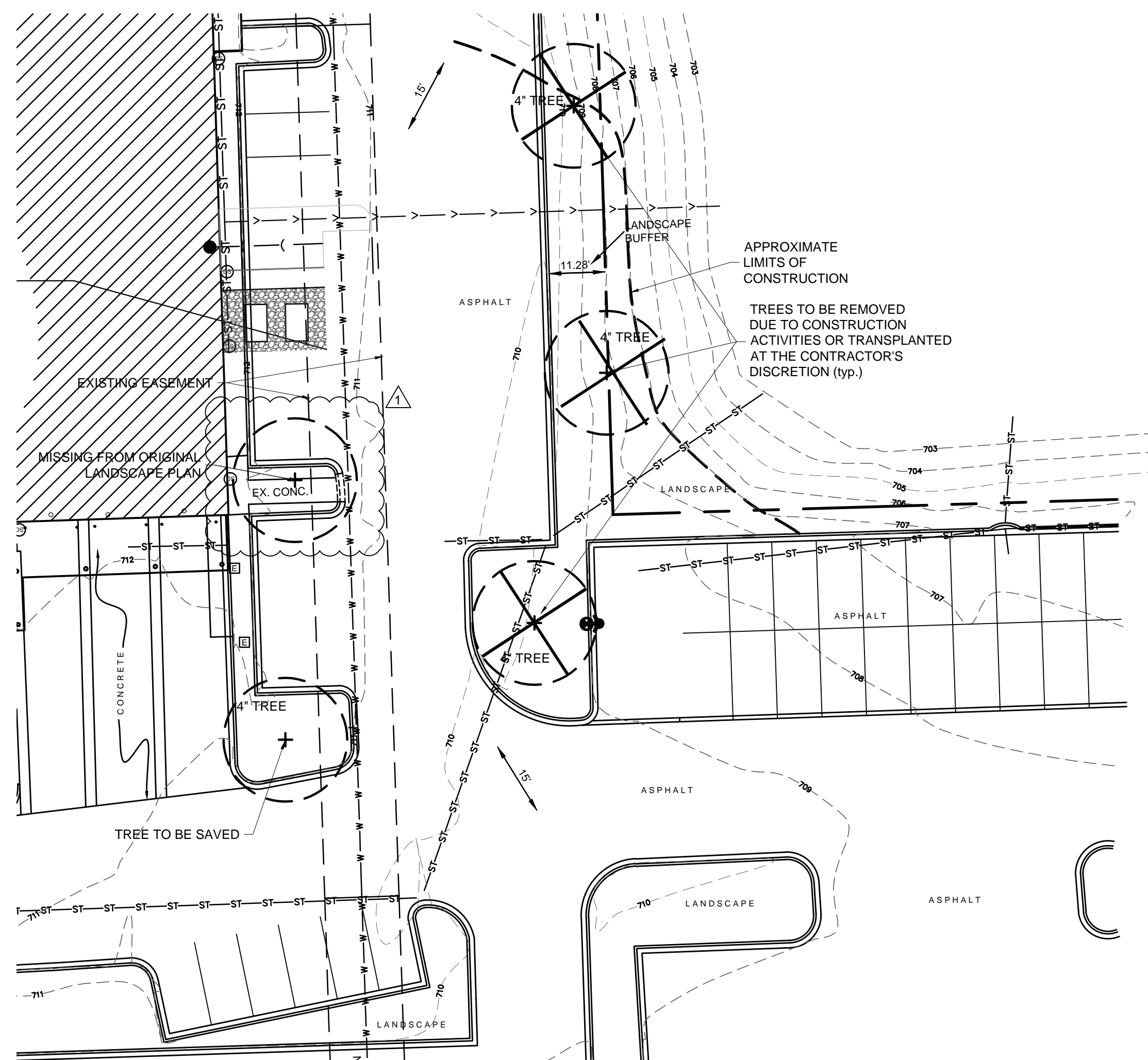


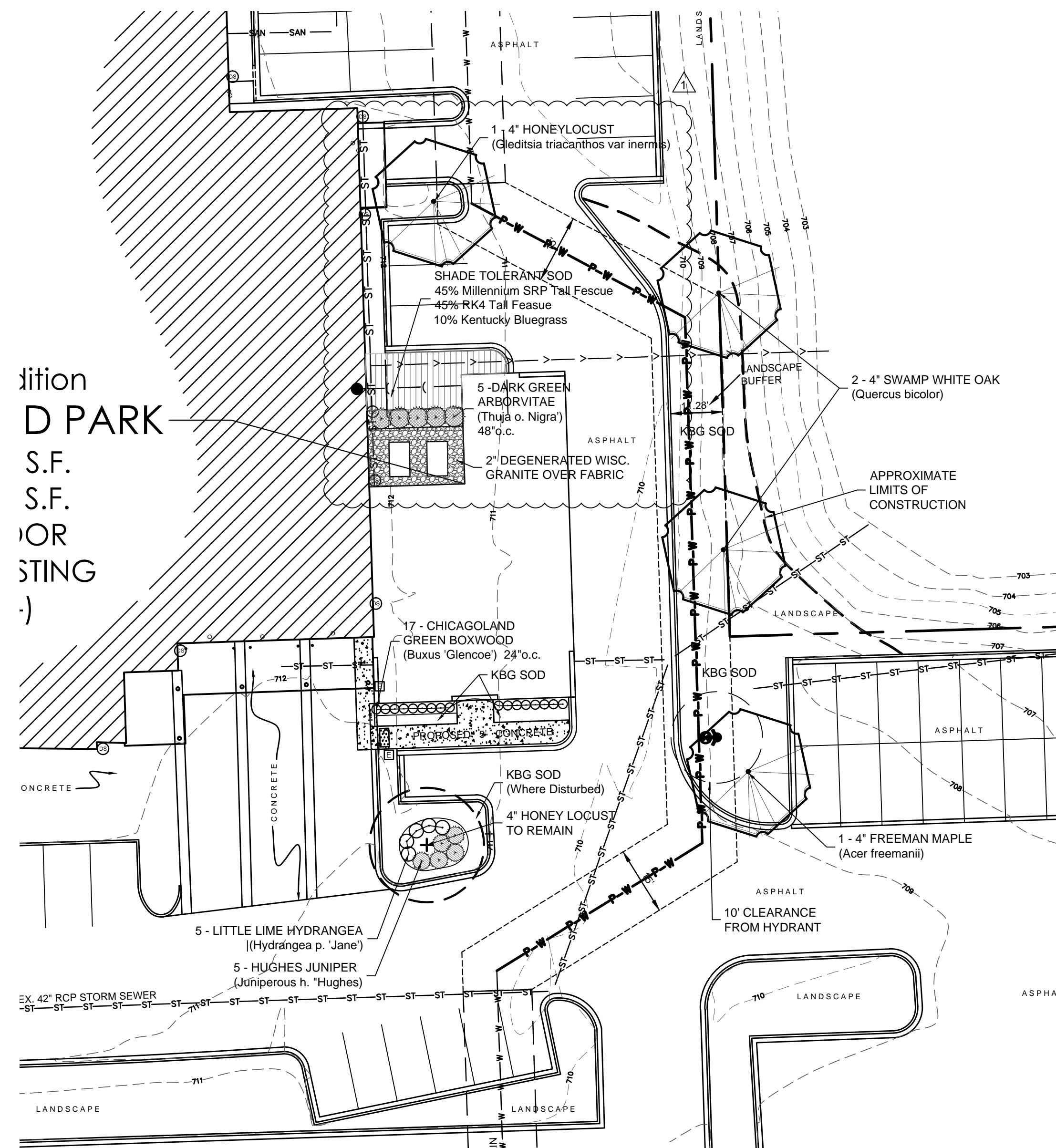
REVISIONS

1 Per 2-23-16 Planning Comm 3/8/16

MINI
of
ORLAND
PARK



TREE PRESERVATION & REMOVAL PLAN



PLANTING PLAN

PLANT LIST:

QTY	BOTANICAL NAME	COMMON NAME	SIZE & TYPE
1	Acer freemanii 'Var.'	Freeman Maple	4.0' B/B
1	Gleditsia t. var. inermis	Thornless Honeylocust	4.0' B/B
2	Quercus bicolor	Swamp White Oak	4.0' B/B
17	Buxus 'Glencoe'	Chicagoland Green Boxwood	#5 CONT.
5	Hydrangea p. 'Jane'	Little Lime Hydrangea	#3 CONT.
5	Juniperus h. 'Hughes'	Hughes Juniper	#5 CONT.
5	Thuja o. 'Nigra'	Dark Green Arborvitae	5.0' B/B

MATERIALS LIST:

QTY.	ITEM	DESCRIPTION
6 CY	Mulch	Shredded Hardwood Mulch
345 SY	Sod	Kentucky Bluegrass Sod w/ Mineral Base
35 SY	Sod	Shade Tolerant Sod w/ Mineral Base
190 SF	Gravel	Degenerated Wisconsin Granite over Fabric

CONTRACTOR NOTE:

The three (3) 4" deciduous trees designated for removal may be transplanted and be used in place of the three (3) proposed 4" trees.

GENERAL NOTES:

Plant material shall be nursery grown and be either balled and burlapped or container grown. Sizes and spreads on plant list represent minimum requirements.

Size & grading standards of plant materials shall conform to the latest addition of ANSI Z60.1 AMERICAN STANDARD OF NURSERY STOCK, by the American Nursery & Landscape Association.

Any materials with damaged or crooked/disfigured leaders, bark abrasion, sunscald, insect damage, etc. are not acceptable and will be rejected. Trees with multiple leaders will be rejected unless called for in the plant list as multi-stem or clump (cl.).

Grading shall provide slopes which are smooth and continuous. Positive drainage shall be provided in all areas.

Quantity lists are supplied as a convenience. However, the contractor should verify all quantities. The drawings shall take precedence over the lists.

All plant species specified are subject to availability. Material shortages in the landscape industry may require substitutions. All substitutions must be approved by the Landscape Architect and/or Owner.

Contractor shall verify location of all underground utilities prior to digging. For location outside the City of Chicago call "J.U.L.I.E." (Joint Utility Location for Excavators) 1-800-892-0123.

All plant material shall be guaranteed for one (1) year from the date of acceptance.

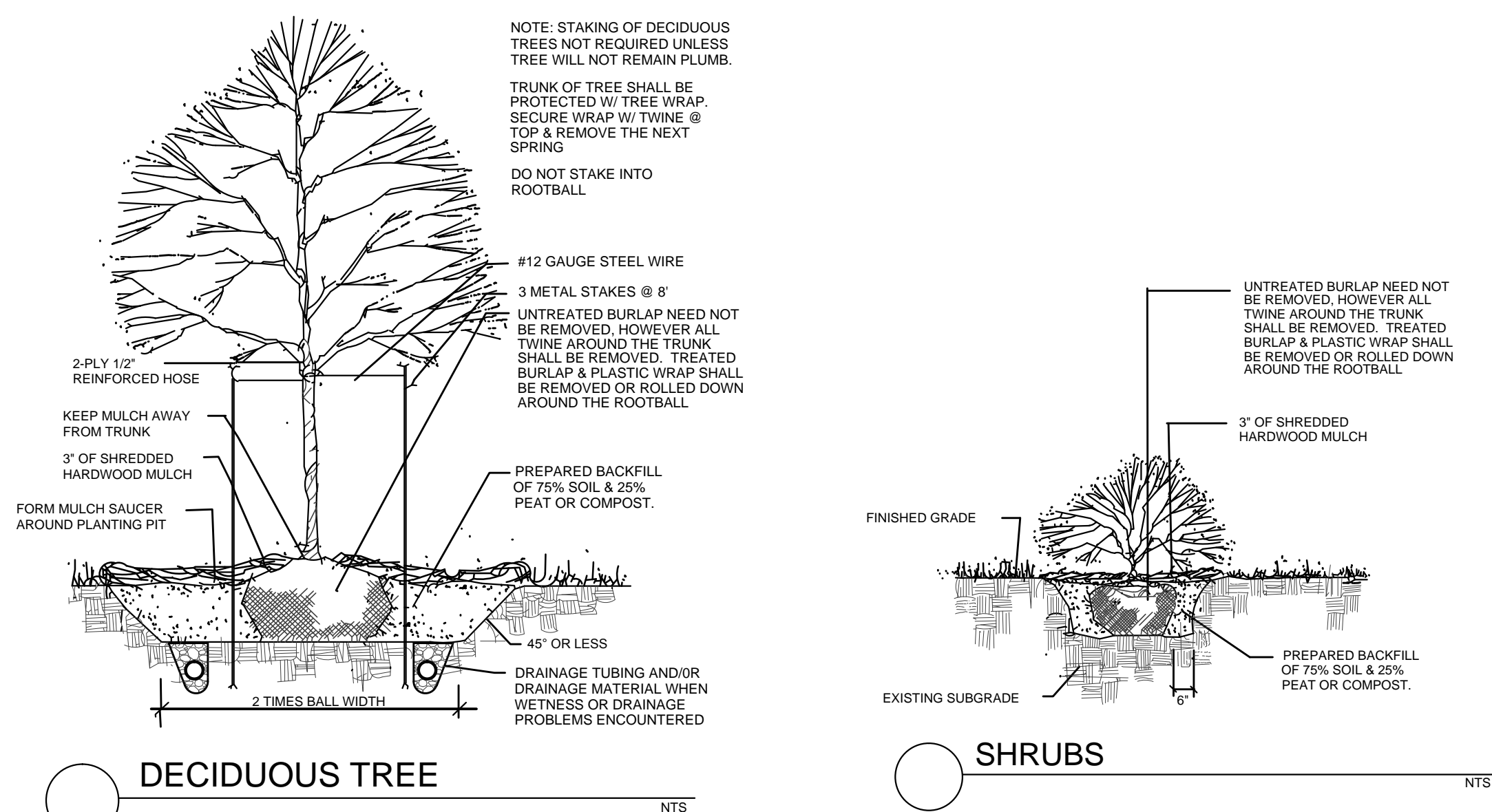
Contractor shall report any discrepancies in the field to the Landscape Architect and/or Owner.

Plant symbols illustrated on this plan are a graphic representation of proposed plant material types and are intended to provide for visual clarity. However, the symbols do not necessarily represent actual plant spread at the time of installation.

Planting beds and tree saucers shall be mulched with a minimum of three inches (3") of shredded wood mulch, with the exception of evergreen trees which shall receive one inch (1") of shredded hardwood mulch over two inches (2") of southern pine bark.

All bed lines and tree saucers shall require a hand spaded edge between lawn and mulched areas.

Planting beds adjacent to building shall be mulched in their entirety to the building foundation. Plant materials shall not be installed under building overhangs and other such areas which do not receive natural rainfall.

LANDSCAPE
PLAN

PROJECT NO.: JOB NO.:

L316 8789

DATE: 2/8/16

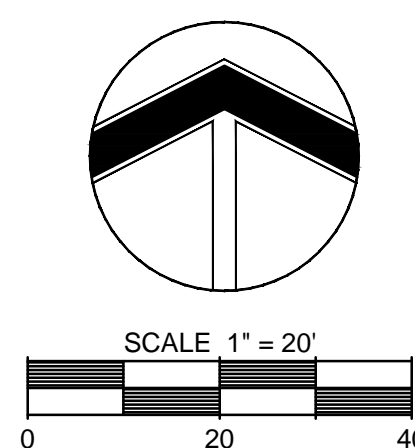
SCALE: 1"=20'

PLANNER: JMR

CHECKED:

SHEET

L-1



**CALL
JULIE
48 HOURS
BEFORE YOU DIG
1-800-892-0123
TOLL FREE
Operates 24 Hours
Every Day**