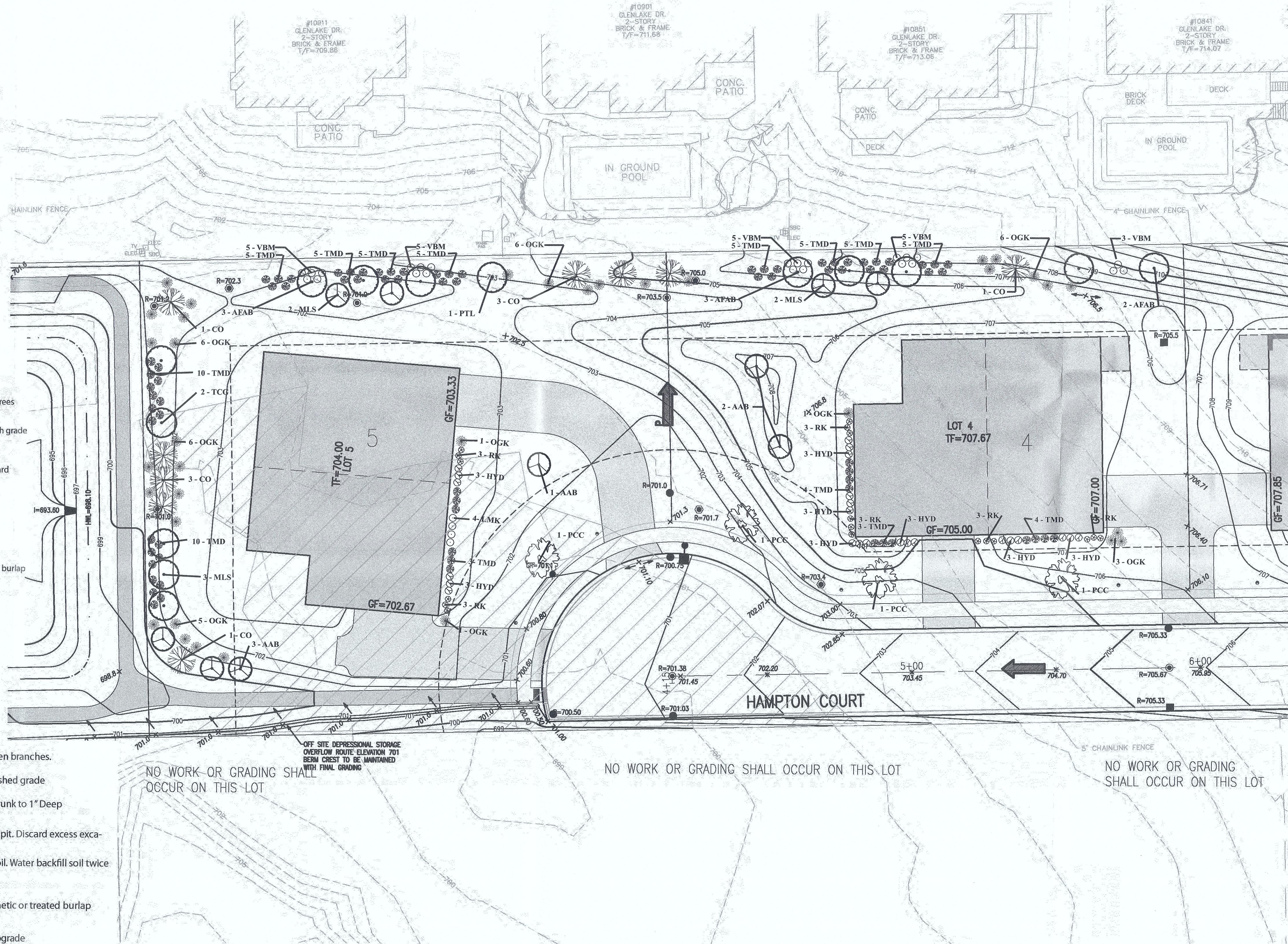
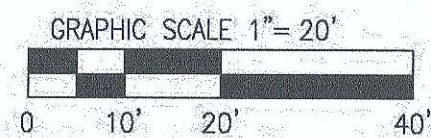


SYMBOL	BOTANICAL NAME	COMMON NAME	SIZE	QTY	CONDITION
AFAB	Acer X freemanii	AUTUMN BLAZE MAPLE	2.5"	8	B&B
TCG	TILIA C. GLENLEVEN	LITTLE LEAF LINDEN	2.5"	3	B&B
PCC	PYRUS C. 'cleveland select'	CLEVELAND SELECT PEAR	2.5"	4	B&B
PTL	Platanus x acerifolia	LONDON PLANETREE	2.5"	1	B&B
MLS	Malus 'prairie fire'	PRAIRIE FIRE CRABAPPLE	2.5"	7	B&B
AAB	Amelanchier arborea	SERVICEBERRY	6'	6	B&B
CO	Picea pungens	COLORADO SPRUCE	6'	9	B&B
VBM	VIBURNUM D. 'BLUEUMFUFF'	BLUEUMFUFF VIBURNUM	30"	23	B&B
HYD	HYDRANGEA 'limelight'	LIMELIGHT HYDRANGA	24"	24	5 GAL
DBB	Euonymus alatus 'DWARF'	DWARF BURNING BUSH	24"	20	5 GAL
TMD	TAXUS X.M. DENSIFORM	DENSI YEW	24"	74	B&B
LMK	Syringa pubescens 'MissKim'	KOREAN LILAC	24"	4	5 GAL
RK	Rosa 'knockout'	KNOCKOUT ROSE	24"	15	2 GAL
OGK	Calamagrostis x a. 'Karl'	KARL FORESTER GRASS	24"	35	2 GAL

- BOUNDARY AND EASEMENT INFORMATION IS TAKEN FROM TOPOGRAPHIC SURVEY PROVIDED BY DEVELOPER
- ALL SETBACKS TO BE AS SHOWN ON PLAN
- Any changes to the plan after Final Development approval require review and approval by the Planning & Zoning Administrator.
- Bare root plants shall not be allowed.
- All front and corner side yards shall be sodded and Include an irrigation system.
- \* Material quality and measurement should conform to the most recent edition of the American Standards for Nursery Stock, ANSIZ60 by the American Nursery and Landscape Association.
- \* The Landscape Architect/designer shall inspect and approve all plant material prior to installation. Any material Installed without approval may be rejected.
- \* The Village may reject any materials that are diseased, deformed, or otherwise not exhibiting superior quality.
- \*All existing trees in landscape buffer around site are to be preserved and protected with temporary construction fencing until project is completed. CURRENTLY THERE IS NO NEED FOR TREE PRESERVATION PLAN BECAUSE LARGE EXISTING TREES ARE SOUTH OF PROPERTY BUFFER LINE
- \*PROPERTY OWNER WILL ALSO BE REPLACING THE EXISTING FENCE WITH A 6-FOOT HIGH CHAIN LINK FENCE.

- \* All other plant material shall conform with the American Standards for Nursery Stock, published by the American Association of Nurserymen for that type of tree or shrub at the time of installation.
- \* All plant material shall be installed free of disease and in a manner than ensures the availability of sufficient soil and water to sustain healthy growth.
- \* All plant material shall be planted with a minimum of six (6) inches of organic soil and mulched to a depth of three (3) inches.
- \* All plant material shall be planted in a manner which is not intrusive to utilities or pavement
- \* All earth berm locations shall be reviewed by the Village Engineer to determine how the berms shall relate to drainage and public utilities
- \* The plantings in any landscaped area must be properly maintained in order for the landscaped area to fulfill the purposes for which it was established. The owner of the property and any tenant on the property where a landscaped area is required shall be jointly and severally responsible for the maintenance of all plant material within the landscaped area. Such maintenance shall include all actions necessary to keep the landscaped areas free of litter and debris and to keep plantings healthy and orderly in appearance.
- \* A parkway shall be maintained by the adjacent property owner unless an agreement for maintenance has been reached with the Village.
- \* All shade/overstory trees shall have a 'central leader'
- \* The Landscape Architect/designer shall inspect and approve all plant material prior to installation. Any material installed without approval may be rejected.
- \* Contractor shall be responsible for providing and installing all materials shown on the plan in accordance with the plan design and materials quantities.
- \* The Contractor is responsible for protecting underground utilities, sidewalks, and other previously constructed site improvements.
- \* The Contractor is responsible for protecting all existing vegetation to be preserved.





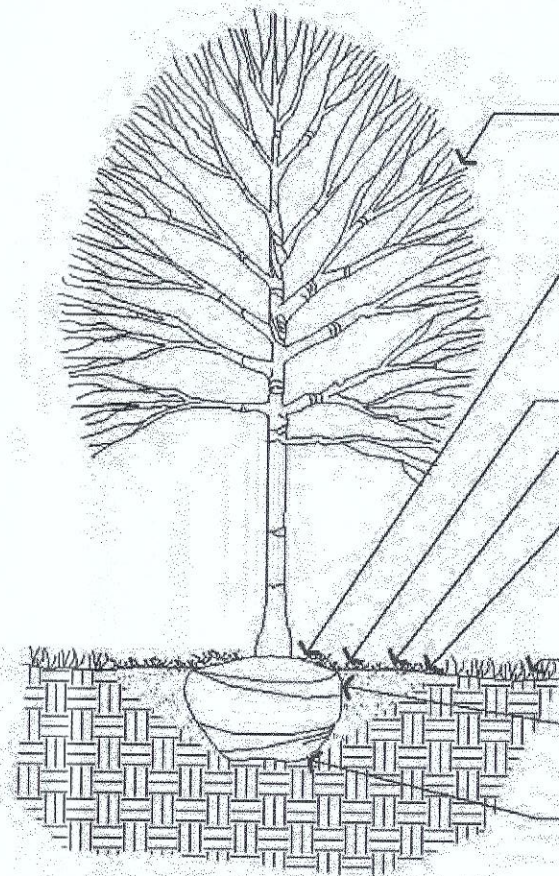
PLANT/MATERIAL LIST:					
SYMBOL	BOTANICAL NAME	COMMON NAME	SIZE	QTY	CONDITION
AFAB	Acer X freemanii	AUTUMN BLAZE MAPLE	2.5"	7	B&B
TCG	TILIA C. GLENLEVEN	LITTLE LEAF LINDEN	2.5"	12	B&B
PCC	PYRUS C. 'CHANTICLEER'	CHANTICLEER PEAR	2.5"	22	B&B
PTL	Platanus X acerifolia	LONDON PLANETREE	2.5"	8	B&B
MLS	Malus 'prairie fire'	PRAIRIE FIRE CRABAPPLE	2.5"	4	B&B
CO	Picea pungens	COLORADO SPRUCE	6'	14	B&B
TMD	TAXUS X.M. DENSIFORM	DENSI YEW	24"	78	B&B
HYD	HYDRANGEA 'limelight'	LIMELIGHT HYDRANGA	24"	42	5 GAL
DBB	Euonymus alatus 'DWARF'	DWARF BURNING BUSH	24"	40	5 GAL
LMK	Syringa pubescens 'MissKim'	KOREAN LILAC	24"	30	5 GAL
RK	Rosa 'knockout'	KNOCKOUT ROSE	24"	33	2 GAL
OGK	Calamagrostis X a. 'Karl'	KARL FORESTER GRASS	24"	67	2 GAL

NOTES:

- \* All other plant material shall conform with the American Standards for Nursery Stock, published by the American Association of Nurserymen for that type of tree or shrub at the time of installation.
- \* All plant material shall be installed free of disease and in a manner than ensures the availability of sufficient soil and water to sustain healthy growth.
- \* All plant material shall be planted with a minimum of six (6) inches of organic soil and mulched to a depth of three (3) inches.
- \* All plant material shall be planted in a manner which is not intrusive to utilities or pavement
- \* All earth berm locations shall be reviewed by the Village Engineer to determine how the berms shall relate to drainage and public utilities
- \* The plantings in any landscaped area must be properly maintained in order for the landscaped area to fulfill the purposes for which it was established. The owner of the property and any tenant on the property where a landscaped area is required shall be jointly and severally responsible for the maintenance of all plant material within the landscaped area. Such maintenance shall include all actions necessary to keep the landscaped areas free of litter and debris and to keep plantings healthy and orderly in appearance.
- \* A parkway shall be maintained by the adjacent property owner unless an agreement for maintenance has been reached with the Village.
- \* All shade/overstory trees shall have a "central leader"
- \* The Landscape Architect/designer shall inspect and approve all plant material prior to installation. Any material installed without approval may be rejected.
- \* Contractor shall be responsible for providing and installing all materials shown on the plan in accordance with the plan design and materials quantities.
- \* The Contractor is responsible for protecting underground utilities, sidewalks, and other previously constructed site improvements.
- \* The Contractor is responsible for protecting all existing vegetation to be preserved.

NOTES:

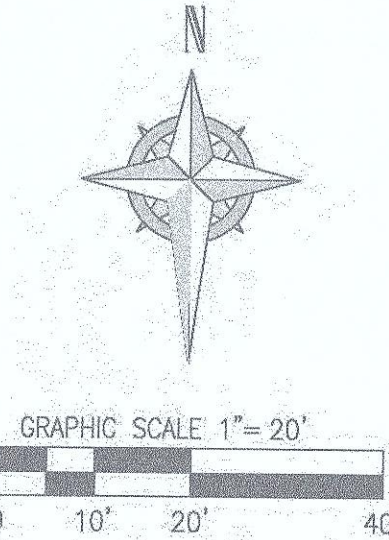
- BOUNDARY AND EASEMENT INFORMATION IS TAKEN FROM TOPOGRAPHIC SURVEY PROVIDED BY DEVELOPER
- ALL SETBACKS TO BE AS SHOWN ON PLAN
- Any changes to the plan after Final Development approval require review and aproval by the Planning & Zoning Administrator.
- Bare root plants shall not be allowed.
- All front and corner side yards shall be sodded and Include an irrigation system.
- \* Material quality and measurement should conform to the most recent edition of the American Standards for Nursery Stock, ANSIZ60 by the American Nursery and Landscape Association.
- \* The Landscape Architect/designer shall inspect and approve all plant material prior to installation. Any material Installed without approval may be rejected.
- \* The Village may reject any materials that are diseased, deformed, or otherwise not exhibiting superior quality.
- \* All existing trees in landscape buffer around site are to be preserved and protected with temporary construction fencing until project is completed. CURRENTLY THERE IS NO NEED FOR TREE PRESERVATION PLAN BECAUSE LARGE EXISTING TREES ARE SOUTH OF PROPERTY BUFFER LINE
- \* PROPERTY OWNER WILL ALSO BE REPLACING THE EXISTING FENCE WITH A 6-FOOT HIGH CHAIN LINK FENCE.



- Remove any broken branches, tree tags & ribbons (Upon approval of plant)
- Maintain exposure of root flare. If root flare is not exposed, carefully remove excess soil. Set root ball so that base of root flare is 3"-6" high than adjacent finish grade (Root flare is typically 6" below bud graft union on grafted trees)
- Mulch, 3" Deep, typ Taper mulch to 1" Depth at trunk
- Prepare a 3" min ht. saucer around pit for watering
- Hole tie to be twice as wide as root ball. Backfill pit with amended topsoil. Remove excess excavated material from site and dispose of legally. Water backfill sod twice before mulching.
- Finish grade
- Cut and remove all plastic, synthetic or treated burlap from top of rootball.
- Set rootball on undisturbed or compacted subgrade. If hole is too deep and compact additional fill before setting tree.

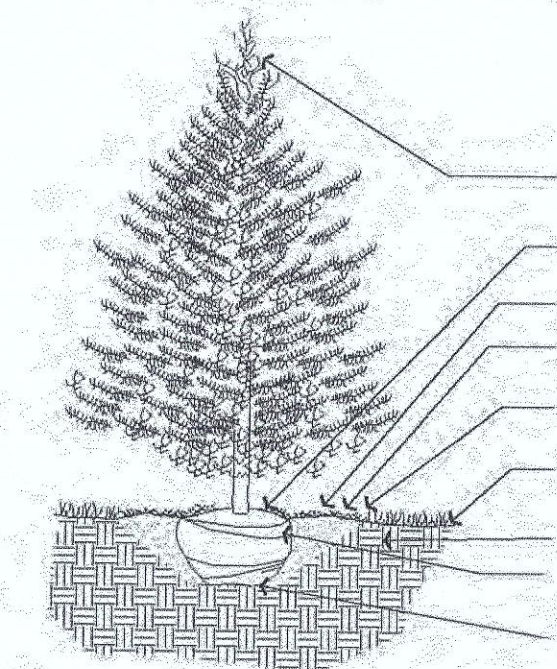
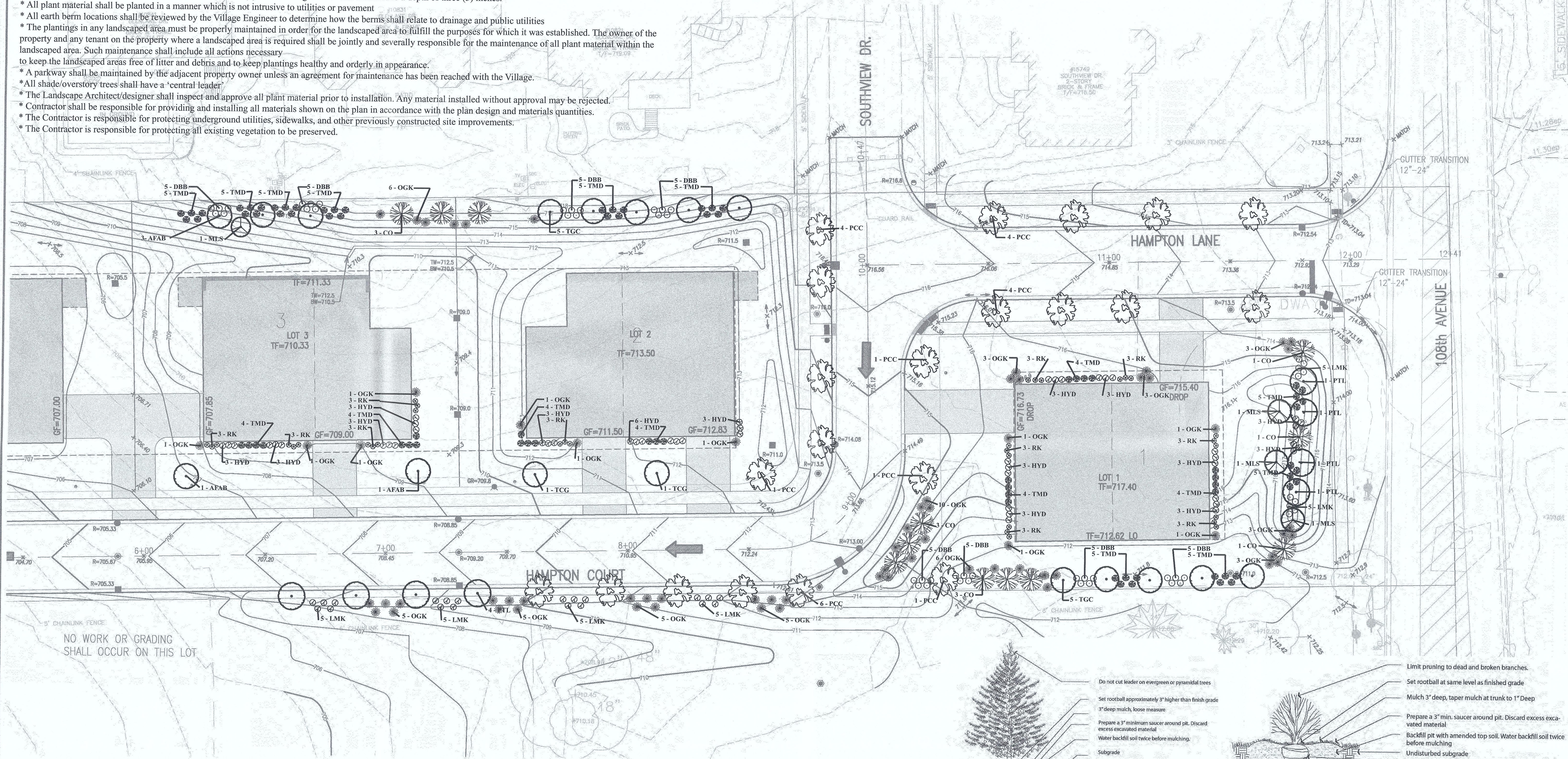
NOTES:

1. ALL ELEVATIONS SHOWN AT CURB ARE TOP OF THE CURB ELEVATION.
2. DRIVEWAY SLOPES SHALL BE BETWEEN 2% AND 8%. THE DRIVEWAY SLOPES ARE SHOWN FOR EACH BUILDING. IF THE DRIVEWAY LOCATION IS ALTERED, THE SLOPE SHALL BE CHECKED FOR SLOPE LIMITS.
3. ALL ELEVATIONS SHOWN ON GRADING PLANS ARE FINISHED GRADE ELEVATIONS. REFER TO SHEET T51 FOR TYPICAL LOT GRADING SECTIONS AND OTHER DETAILS.
4. BUILDING PADS SHOWN ARE APPROXIMATE. FINAL FOUNDATION FOOTPRINTS WILL BE DETERMINED BY THE BUILDER.
5. EMERGENCY OVERLAND FLOW ROUTE.
6. THE CROSS SLOPES ON ALL SIDEWALKS SHALL NOT EXCEED 2%.
7. FINAL TOP OF FOUNDATION AND GARAGE FLOOR ELEVATIONS WILL BE DETERMINED BASED ON SALES AND ARCHITECTURAL.

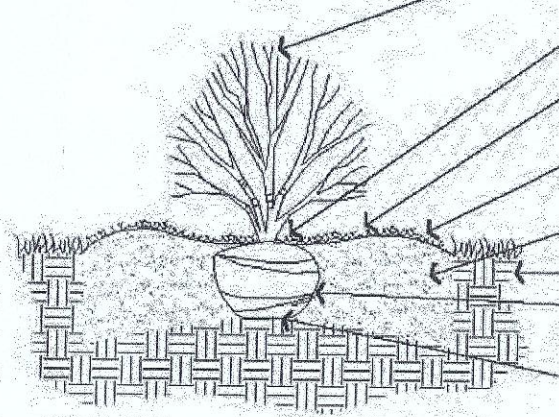


1 DECIDUOUS TREE PLANTING DETAIL

SCALE: N.T.S.



- Do not cut leader on evergreen or pyramidal trees
- Set rootball approximately 3" higher than finish grade
- 3" deep mulch, loose measure
- Prepare a 3" minimum saucer around pit. Discard excess excavated material
- Water backfill soil twice before mulching.
- Subgrade
- Backfill pit with amended top soil
- Cut and remove all plastic, synthetic or treated burlap from top of rootball
- Set rootball on undisturbed subgrade.



- Limit pruning to dead and broken branches.
- Set rootball at same level as finished grade
- Mulch 3" deep, taper mulch at trunk to 1" Deep
- Prepare a 3" min. saucer around pit. Discard excess excavated material
- Backfill pit with amended top soil. Water backfill soil twice before mulching
- Undisturbed subgrade
- Cut and remove all plastic, synthetic or treated burlap from top of rootball.
- Set root ball on undisturbed subgrade

2 EVERGREEN TREE PLANTING DETAIL

SCALE: N.T.S.

3 DECIDUOUS / EVERGREEN SHRUB PLANTING DETAIL

SCALE: N.T.S.

LANDSCAPE PLAN  
HAMPTON COURT  
ORLAND PARK, ILLINOIS  
(ISSUED FOR CONSTRUCTION)

ADVANTAGE CONSULTING ENGINEERS  
80 MAIN STREET, SUITE 17  
LEMONT, IL 60439  
630-520-2467

Advantage Consulting Engineers  
Landscape Design, Installation & Construction  
(708) 301-2090  
FAX (708) 301-7762  
12720 WISSEN RD, SUITE 101  
HOMER GLEN, IL 60431  
WEBSITE: WWW.ATOUCHOFGREEN.NET

MAY 22, 2017  
JOB: 14-12  
SHEET:  
LA-1A

NO.	DATE	REVISIONS
1	07/14/15	REVISED PER VILLAGE
2	08/14/15	REVISED PER CDDOTH
3	08/27/15	REVISED PER VILLAGE