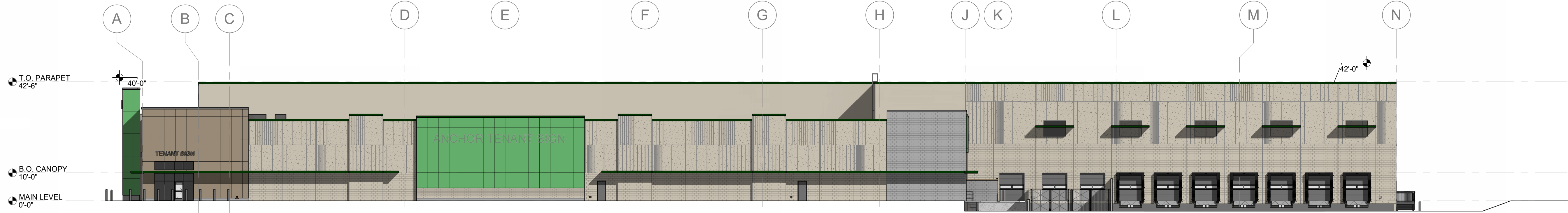
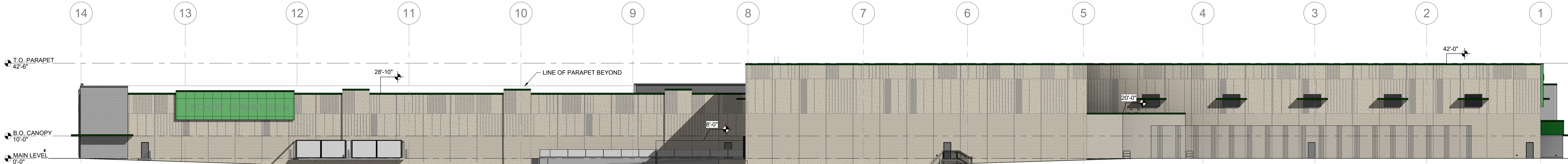


1/14/2026 12:58:31 PM



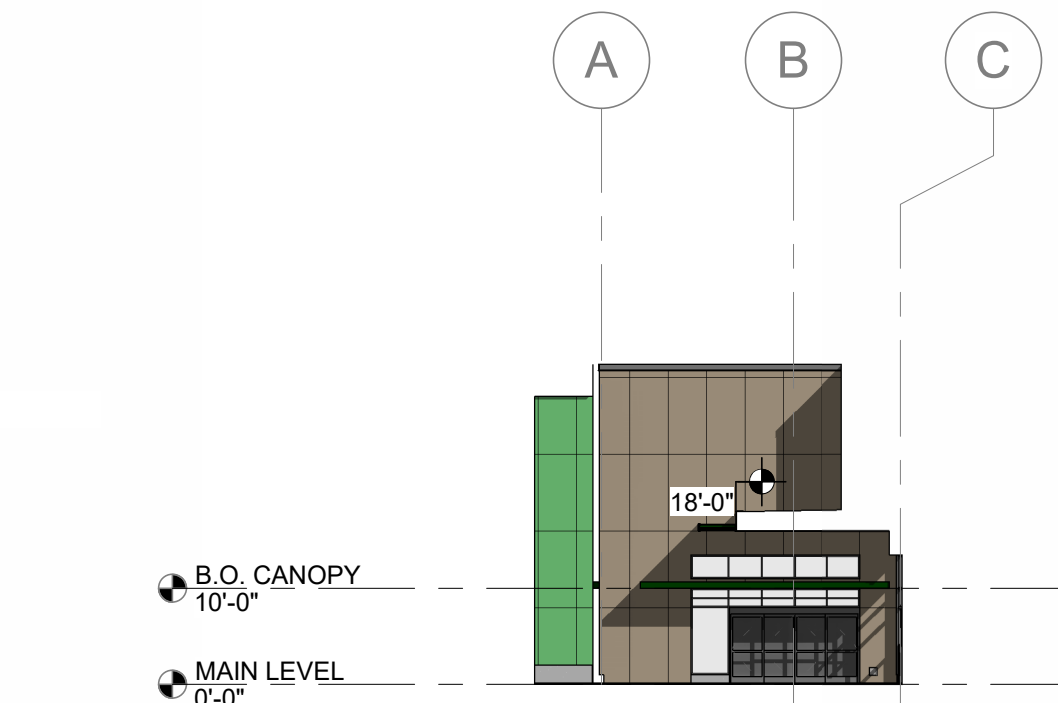
8 ELEVATION - NORTH
1" = 20'-0"



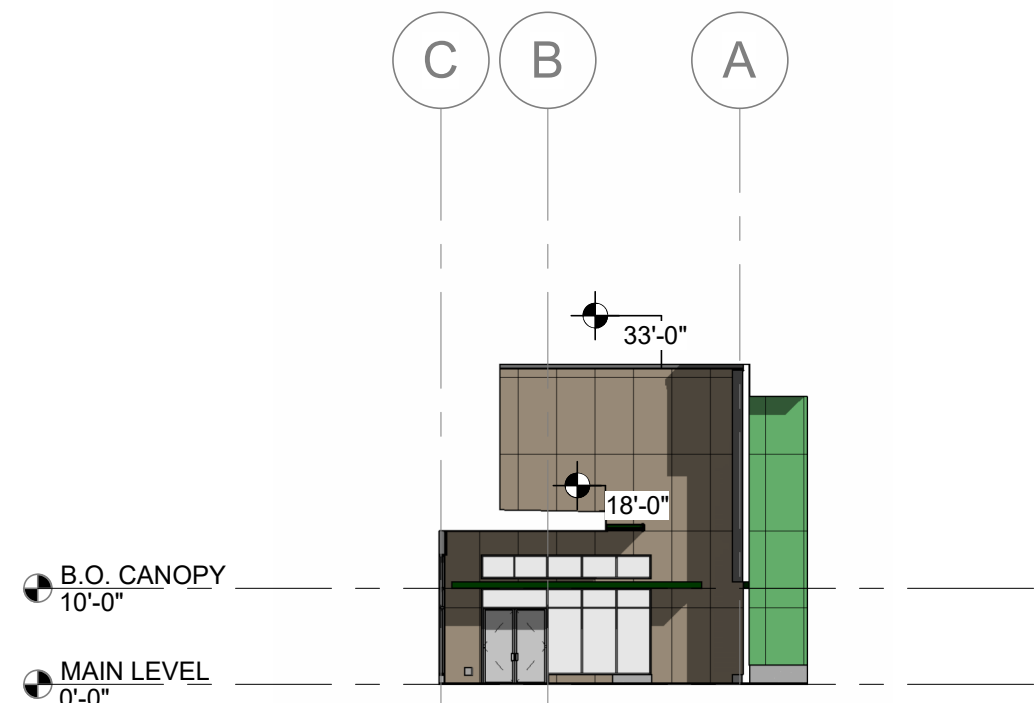
7 ELEVATION - WEST
1" = 20'-0"



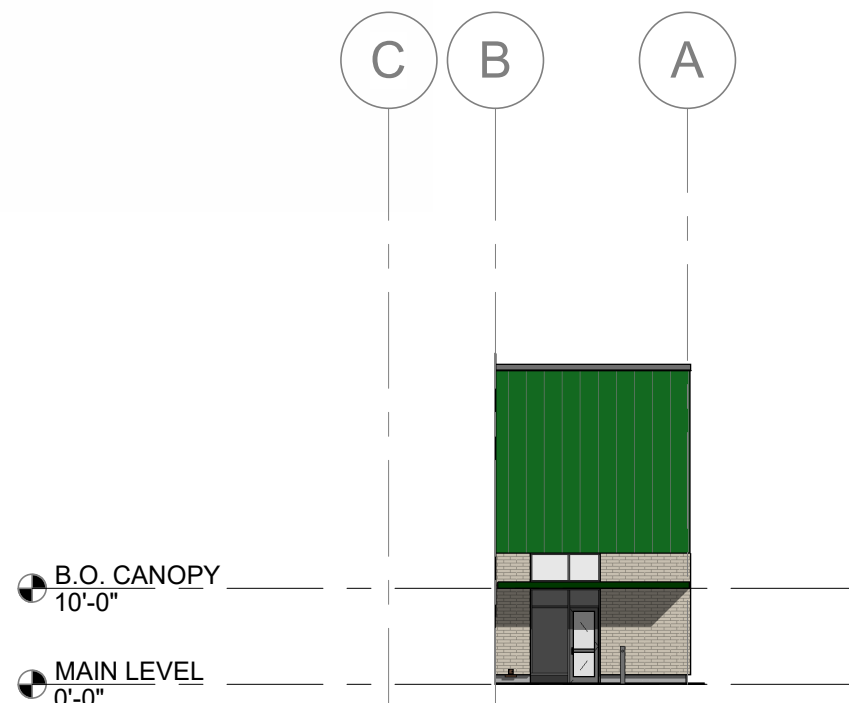
6 ELEVATION - SOUTH
1" = 20'-0"



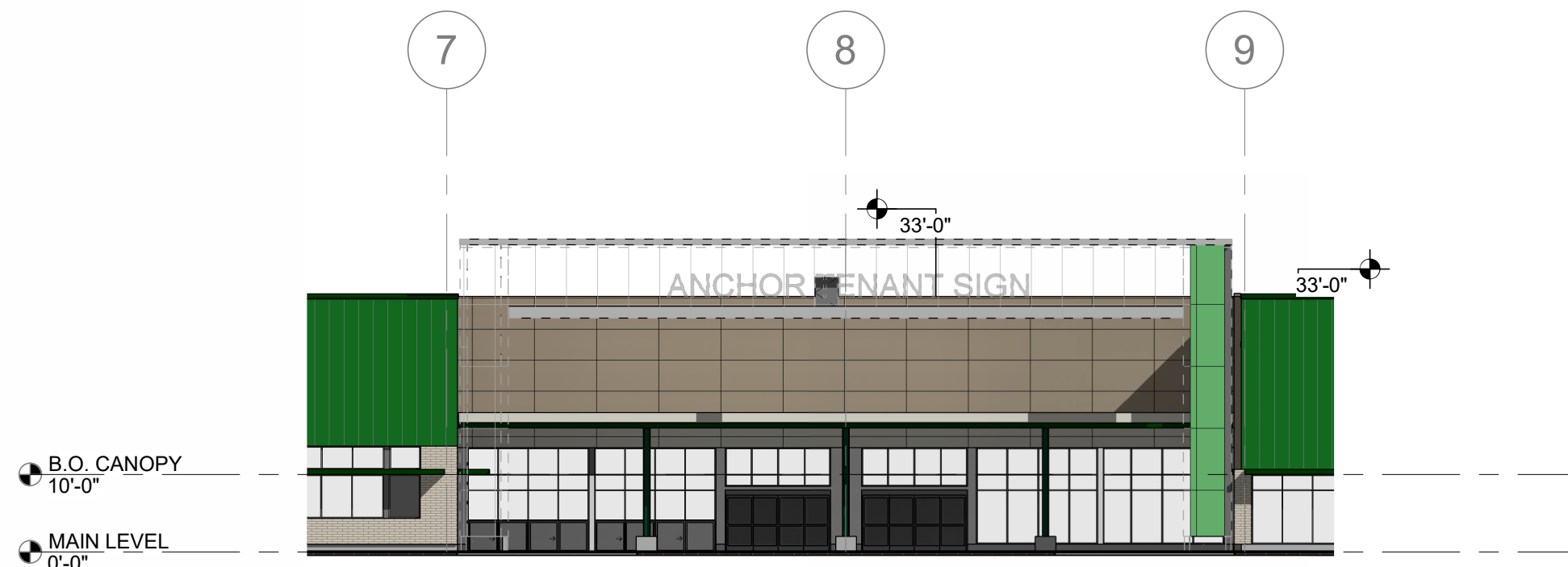
5 ELEVATION - NORTH, PLAZA
1" = 20'-0"



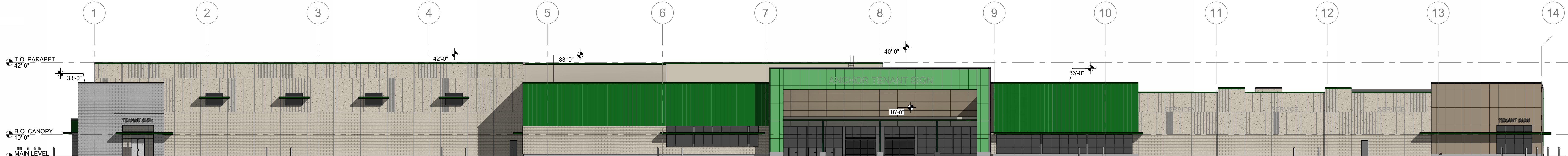
4 ELEVATION - SOUTH, PLAZA
1" = 20'-0"



3 ELEVATION - SOUTH, 2
1" = 20'-0"



2 ELEVATION - EAST, PORTAL ENTRY
1" = 20'-0"



1 ELEVATION - EAST (FRONT)
1" = 20'-0"

ARCHITECT OF RECORD



BRR ARCHITECTURE, INC.
8131 METCALF AVENUE
SUITE 300
OVERLAND PARK, KS 66204
www.brrarch.com
TEL: 913-262-9095

CONSULTANT

CLIENT

159TH & LAGRANGE RETAIL

PROJECT TITLE

159TH & LAGRANGE RETAIL

15901 LAGRANGE ROAD, ORLAND PARK IL 60467
PIN: 2721201002, 2721201003

PROJECT NUMBER

62310001

PROJECT MANAGER

DRAWN BY

CHECKED BY

PROFESSIONAL SEAL

COPYRIGHT NOTICE

THIS DRAWING WAS PREPARED FOR USE ON A SPECIFIC SITE. CONTEMPORANEOUS WITH ITS ISSUE DATE AND IT IS NOT SUITABLE FOR USE ON A DIFFERENT PROJECT SITE OR AT A LATER TIME. USE OF THIS DRAWING FOR REFERENCE OR EXAMPLE ON ANOTHER PROJECT REQUIRES THE SERVICES OF PROPERLY LICENSED ARCHITECTS AND ENGINEERS. REPRODUCTION OF THIS DRAWING FOR REUSE ON ANOTHER PROJECT IS NOT AUTHORIZED AND MAY BE CONTRARY TO THE LAW.

BRR DOES NOT GUARANTEE THAT CAD FILES ARE SUFFICIENT OR APPROPRIATE FOR USER'S PURPOSES. USER USES OR ALTERS THESE FILES AT USER'S SOLE RISK AND AGREES TO INDEMNIFY BRR FROM LIABILITY ARISING FROM USER'S USE.

ISSUES AND REVISIONS

NUMBER	DATE	DESCRIPTION
1		

SHEET NAME

EXTERIOR
ELEVATIONS

SHEET NUMBER

A180

NOT FOR CONSTRUCTION