

REVISED

Plant List

Key	Quantity	Name	COMMON/Botanical	Size	Comments
Shade Trees					
ACFR	3	REDPOINTE MAPLE/	Acer x fremanii V. rubrum	2.5" BB	
ACNI	7	GREENCOLUMN BLACK MAPLE/	Acer nigrum 'Greencolumn'	2.5" BB	
ACTR	2	PACIFIC SUNSET MAPLE/	Acer truncatum 'Pacific Sunset'	2.5" BB	
ACSA	8	GREEN MOUNTAIN SUGAR MAPLE/	Acer saccharum 'Green Mountain'	2.5" BB	
CEOC	5	COMMON HACKBERRY/	Celtis occidentalis	2.5" BB	Male Only
GIBI	4	PRINCETON SENTRY GINKGO/	Ginkgo biloba 'Princeton Sentry'	2.5" BB	
GLTR	5	THORNLESS HONEYLOCUST/	Gleditsia tricanthos	2.5" BB	
LITU	5	TULIP TREE/	Liriodendron tulipifera	2.5" BB	
NYSY	4	BLACK TUPELO/	Nyssa sylvatica	2.5" BB	
PLAC	2	EXCLAMATION LONDON PLANETREE/	Platanus x acerifolia 'Morton Circle'	2.5" BB	
PYCA	6	ARISTOCRAT PEAR/	Pyrus calleryana 'Aristocrat'	2.5" BB	
QUSH	3	SHUMARD OAK/	Quercus shumardii	2.5" BB	
TICO	8	GREENSPIRE LITTLELEAF LINDEN/	Tilia cordata 'Greenspire'	2.5" BB	
ULAC	2	HOMESTEAD ELW/	Ulmus 'Homestead'	2.5" BB	
Ornamental Trees					
AMGR	4	AUTUMN BRILLIANCE SERVICEBERRY/	Amelanchier grandiflora 'Autumn Brilliance'	6" BB	
CRCR	2	THORNLESS COCKSPUR HAWTHORN/	Crataegus crus-galli	6" BB	
MAPR	4	PRAIRIEFIRE CRABAPPLE/	Malus 'Prairiefire'	6" BB	
MASN	5	SPRING SNOW CRABAPPLE/	Malus 'Spring Snow'	6" BB	
Shrubs					
ARME	23	VIKING BLACK CHOKEBERRY/	Aronia melanocarpa 'Viking'	3'	Planted 4'-0" on center
EUAL	6	DWARF BURNING BUSH/	Euonymus alatus 'Compactus'	3'	Planted 4'-0" on center
COAL	8	COMPACT REDOISER DOGWOOD/	Cornus alba	3'	Planted 4'-0" on center
COLU	15	PEKING COTONEASTER/	Cotoneaster acutifolia 'Peking'	3'	Planted 4'-0" on center
CORA	35	GRAY DOGWOOD/	Cornus racemosa	3'	Planted 4'-0" on center
FONO	18	NORTHERN GOLD FORSYTHIA/	Forsythia 'Northern Gold'	3'	Planted 4'-0" on center
FOVI	22	BRONXENSIS FORSYTHIA/	Forsythia virens 'Bronxensis'	2'	Planted 3'-0" on center
HYDE	35	RED STAR ST. JOHNSWORT/	Hypericum densiflorum 'Red Star'	2'	Planted 3'-0" on center
PHOP	51	SUMMER WINE NINEBARK/	Physocarpus opulifolius 'Summer Wine'	3'	Planted 4'-0" on center
POFR	30	GOLDFINGER POTENTILLA/	Potentilla frutcosa 'Goldfinger'	3'	Planted 4'-0" on center
RHAR	8	GRO-LOW SUMAC/	Rhus aromatica 'Gro-low'	2'	Planted 3'-0" on center
RIAL	31	ALPINE CURRANT/	Ribes alpinum	3'	Planted 3'-0" on center
ROKO	9	KNOCK OUT ROSE/	Rosa 'Knock Out'	3'	Planted 4'-0" on center
SPBU	48	ANTHONY WATERER SPIREA/	Spiraea x bumalda	3'	Planted 3'-0" on center
VIDE	35	ARROWWOOD VIBURNUM/	Viburnum dentatum	3'	Planted 4'-0" on center
Evergreen Shrubs					
JUCH	17	SEA GREEN JUNIPER/	Juniperus chinensis 'Sea Green'	3'	Planted 4'-0" on center
JUHO	15	BLUE CHIP JUNIPER/	Juniperus horizontalis 'Blue Chip'	24"	Planted 3'-0" on center
TAME	29	HICKS 'YEW'/	Taxus media 'Hicksii'	24"	Planted 4'-0" on center
THOC-8	8	DARK GREEN ARBORVITAE/	Thuja occidentalis 'Nigra'	8" BB	Planted 4'-0" on center
THOC	11	DARK GREEN ARBORVITAE/	Thuja occidentalis 'Nigra'	6" BB	Planted 4'-0" on center
Perennials / Groundcovers					
HEPM	100	PARDON ME DAYLILLY/	Hammercallis 'Pardon Me'	#1 Container	Planted 1'-0" on center
PATR	6	BOSTON IVY/	Parthenocissus tricuspidata	#1 Container	Planted 10'-0" on center
VIMI	60	DART'S BLUE PERIWINKLE/	Vinca minor 'Dart's Blue'	#1 Container	Planted 2'-0" on center

Village Landscape Requirements

Bufferyard Requirements:

North Buffer - 330 linear feet  
Commercial adjacent to DU/Attached - Type 3 Buffer (10' Req.) 15' Proposed  
6' Fence requirement being waived per Village based on existing wall  
330 / 100 = 3.3 x 4 = (13.2) 13 Canopy Trees  
3.3 x 16 = (52.8) 53 Shrubs

13 Canopy Trees and 53 Shrubs Provided on Plan

East Buffer - 357.8 linear feet  
Commercial adjacent to Vacant Commercial - Type 1 Buffer (10' Req.) 0' Proposed  
357.8 / 100 = 3.6 x 3 = (10.8) 11 Canopy Trees  
3.6 x 1 = (3.6) 4 Understory Trees  
3.6 x 16 = (57.6) 58 Shrubs

16 Canopy Trees, 6 Understory Trees, and 65 Shrubs Provided on Plan

South Buffer - 331.3 linear feet  
Commercial adjacent to Developed Commercial - Type 1 Buffer (10' Req.) 0' Proposed  
331.3 / 100 = 3.31 x 3 = (9.9) 10 Canopy Trees  
3.31 x 1 = (3.31) 3 Understory Trees  
3.31 x 16 = (53.0) 60 Shrubs

11 Canopy Trees, 3 Understory Trees, and 60 Shrubs Provided on Plan

West Buffer - 195 linear feet  
Commercial adjacent to Developed Commercial - Type 1 Buffer (10' Req.) 10' Proposed  
195 / 100 = 2.0 x 3 = (6.0) 6 Canopy Trees  
2.0 x 1 = (2.0) 2 Understory Trees  
2.0 x 16 = (32.0) 32 Shrubs

6 Canopy Trees, 3 Understory Trees, and 32 Shrubs Provided on Plan

Interior Lot Landscaping  
1 Tree per 10,000 square feet of lot area for development  
2.94 acres = 128,066.4 sq. ft. / 10,000 sq. ft. = (12.8) 13 Canopy Trees

13 Canopy Trees Provided on Plan

Foundation Landscaping  
70% Foundation Landscaping (at min. 10' in width) to be shown adjacent to Buildings along major access lanes.

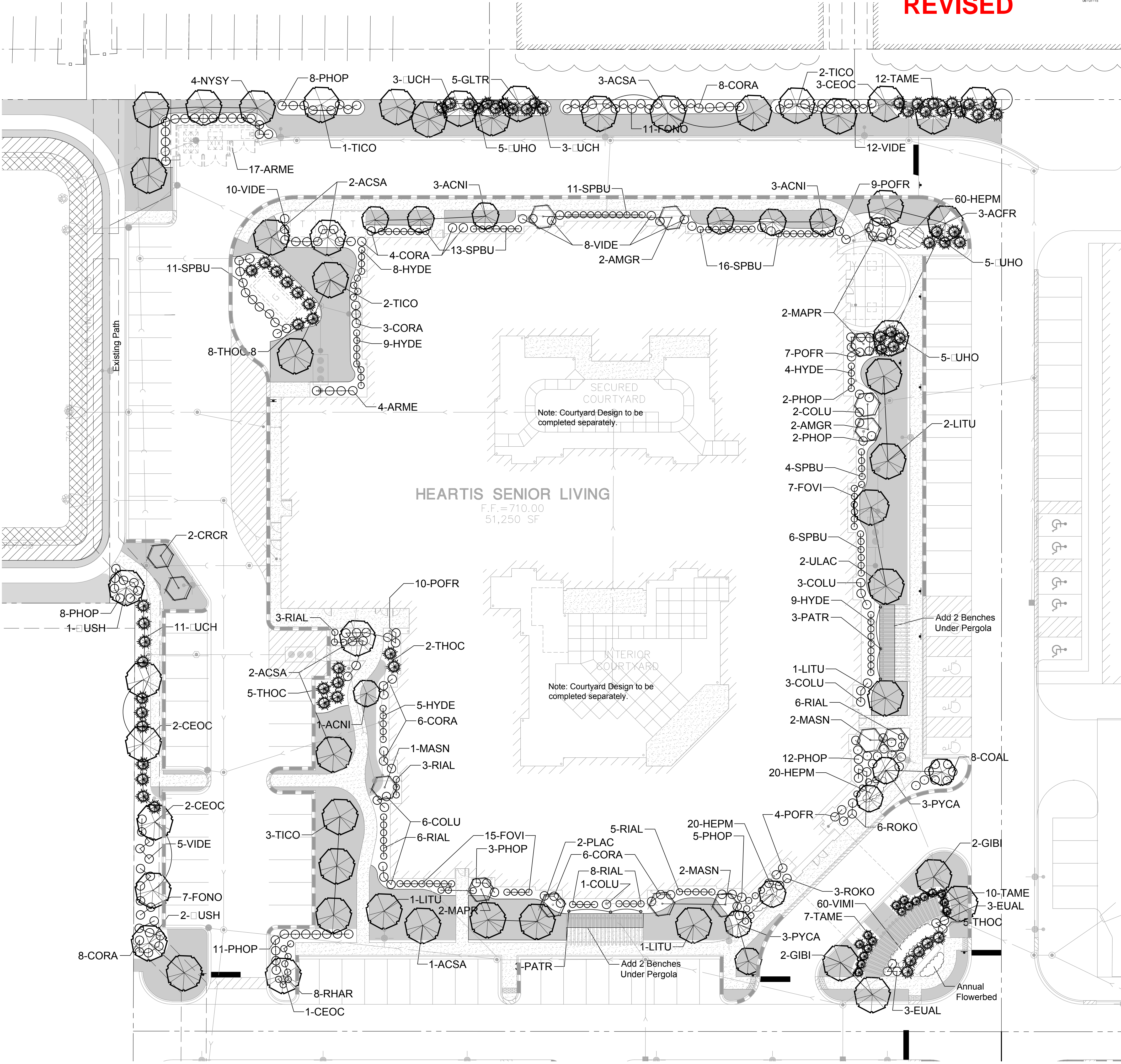
Turf Areas

4" Shredded Bark Mulch Provided in Planting Beds

BOARD APPROVED

Case No: 2016-0862  
Date: 04/27/2016  
W/Conditions:  
W/Out Conditions: X - Revised 8/15/17

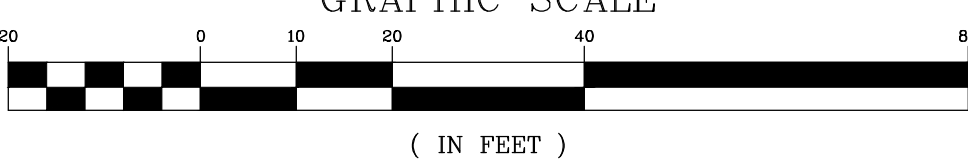
VILLAGE OF ORLAND PARK



Preliminary Landscape Plan

Scale:

1" = 20'-0"



HEARTIS ORLAND PARK - SENIOR LIVING

ORLAND PARK, ILLINOIS

FINAL LANDSCAPE PLANS

PROJ. MGR.: JC

PROJ. ASSOC.: GMC1

DRAWN BY: JBD

DATE: 3-10-16

SCALE: 1"=20'

SHEET

L1 OF L3

CADOP101

Manhard CONSULTING LTD.

800 Woodside Parkway, Vernon Hills, IL 60061 | phone: 847.684.1850 | fax: 847.684.1851 | manhard.com

07-12-17 PER INTERNAL REVIEW  
12-12-17 PER REVIEW OF FACILITIES  
4-19-16 REVISED PER VILLAGE COMMENTS  
4-1-16 REVISED PER VILLAGE COMMENTS

Construction Managers • Environmental Scientists • Landscape Architects • Planners



Ornamental Trees					
AMGR	4	AUTUMN BRILLIANCE SERVICEBERRY/ <i>Amelanchier grandiflora</i> 'Autumn Brilliance'	6'	BB	
CRCR	2	THORNLESS COCKSPUR HAWTHORN / <i>Crataegus crus-galli</i>	6'	BB	
MAFR	4	PRAIRIEFIRE CRABAPPLE/ <i>Malus</i> 'Prairiefire'	6'	BB	
MASN	5	SPRING SNOW CRABAPPLE/ <i>Malus</i> 'Spring Snow'	6'	BB	

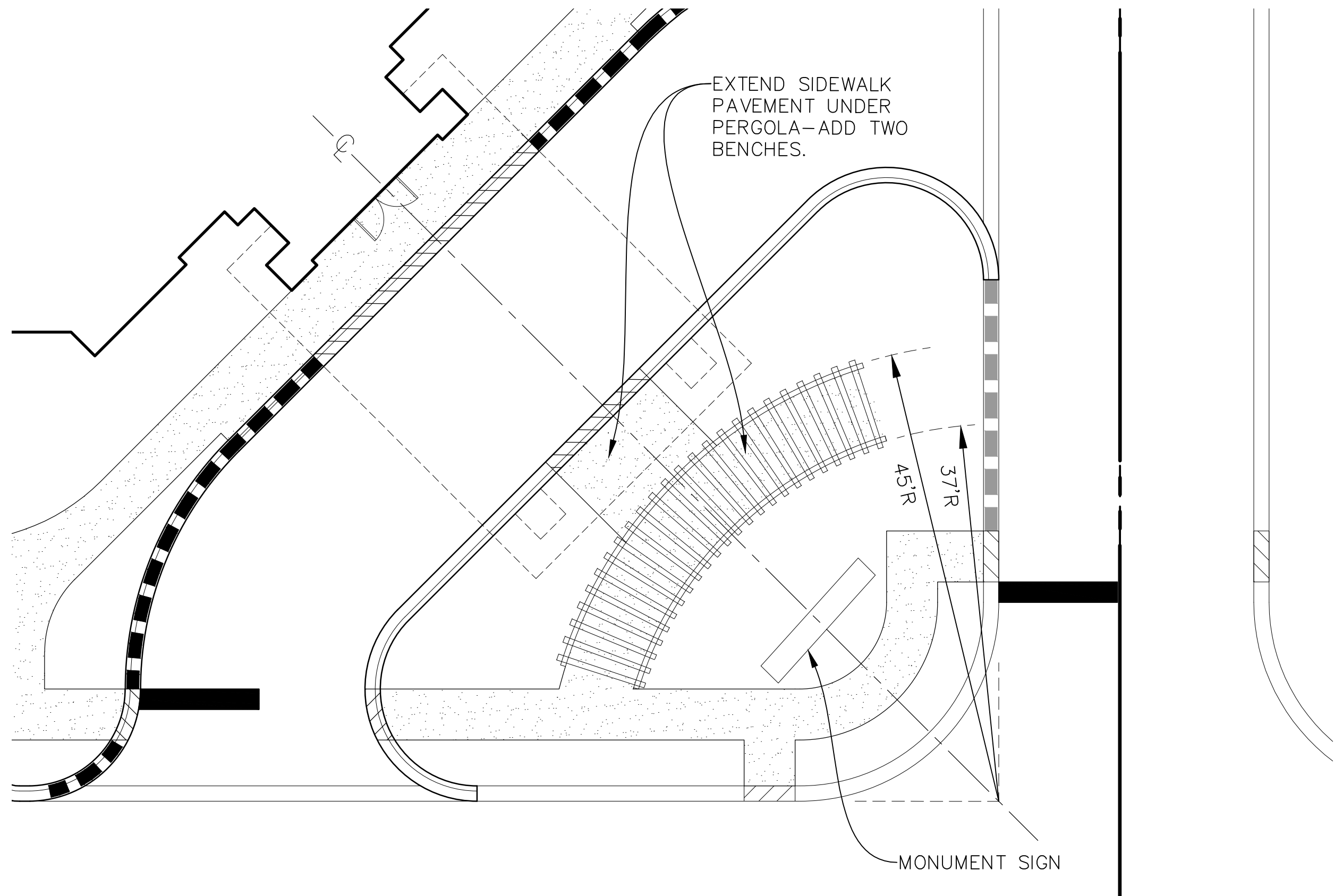
HYDE	33	RED STAR ST. JOHNSWORT/ <i>Hypericum densiflorum</i> 'Red Star'	2'	Planted 3'-0" on center
PHOP	51	SUMMER WINE NINEBARK/ <i>Physocarpus opulifolius</i> 'Summer Wine'	3'	Planted 4'-0" on center
POFR	30	GOLDFINGER POTENTILLA/ <i>Potentilla frutosa</i> 'Goldfinger'	3'	Planted 4'-0" on center
RHAR	8	GR0-LOW SUMAC/ <i>Rhus aromatica</i> 'Gro-low'	2'	Planted 3'-0" on center
RIAL	31	ALPINE CURRANT/ <i>Ribes alpinum</i>	3'	Planted 3'-0" on center
ROKO	9	KNOCK OUT ROSE/ <i>Rosa</i> 'Knock Out'	3'	Planted 4'-0" on center
SPBU	47	ANTHONY WATERER SPIREA/ <i>Spiraea x bumalda</i>	3'	Planted 3'-0" on center
VDF	35	ARROWWOOD VIBURNUM/ <i>Viburnum dentatum</i>	3'	Planted 4'-0" on center

Perennials / Groundcovers					
HEPM	100	PARDON ME DAY/LILLY/ Hemmercallis 'Pardon Me'	#1 Container	Planted 1'-0" on center	
PATR	6	BOSTON IVY/ Parthenocissus tricuspidata	#1 Container	Planted 10'-0" on center	
VIII	60	DART'S BLUE PERIWINKLE/ Vinca minor 'Dart's Blue'	#1 Container	Planted 2'-0" on center	

4" Shredded Bark Mulch Provided  
in Planting Beds



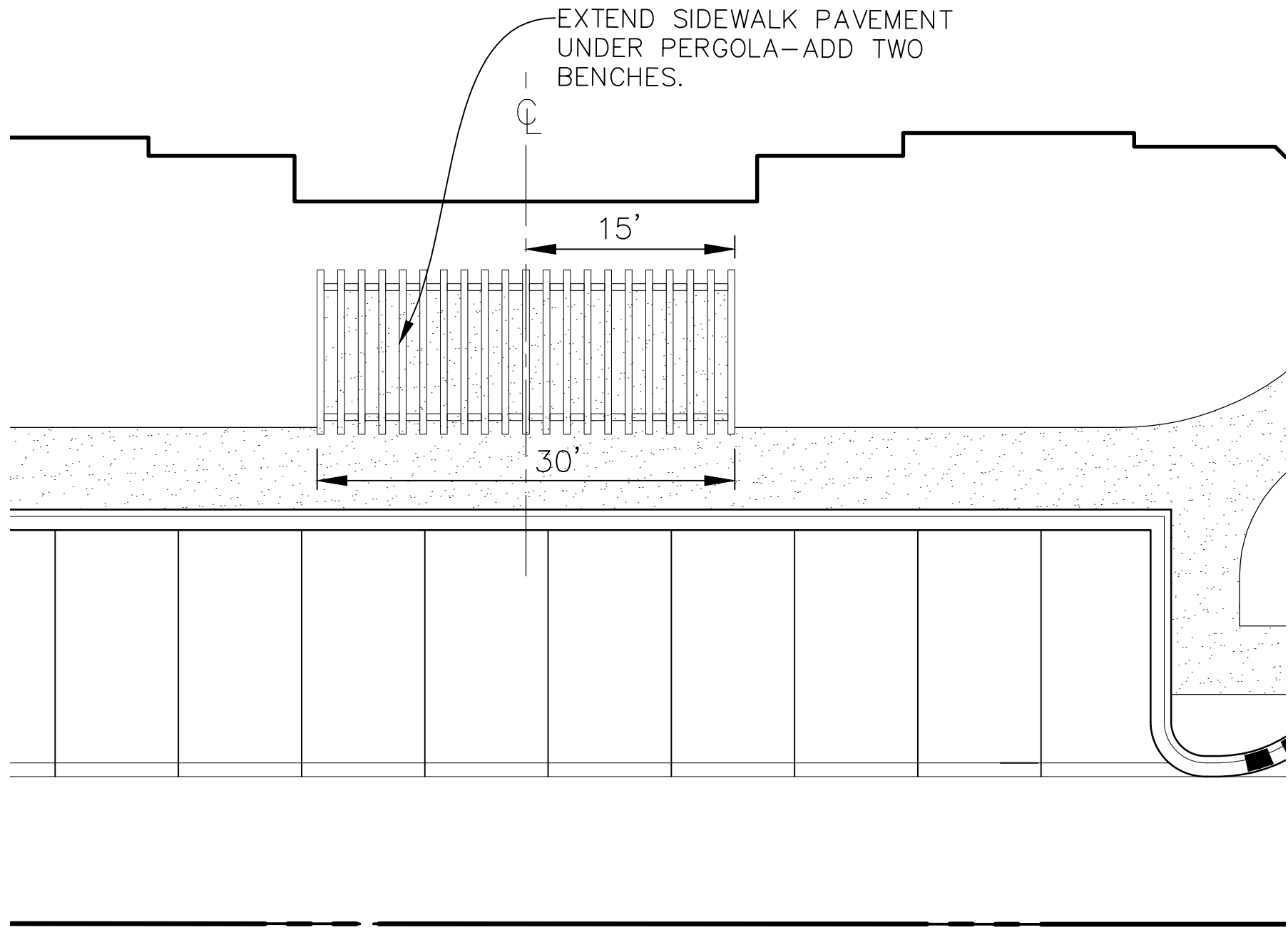
Scale:



Entry Pergola Detail

Scale:

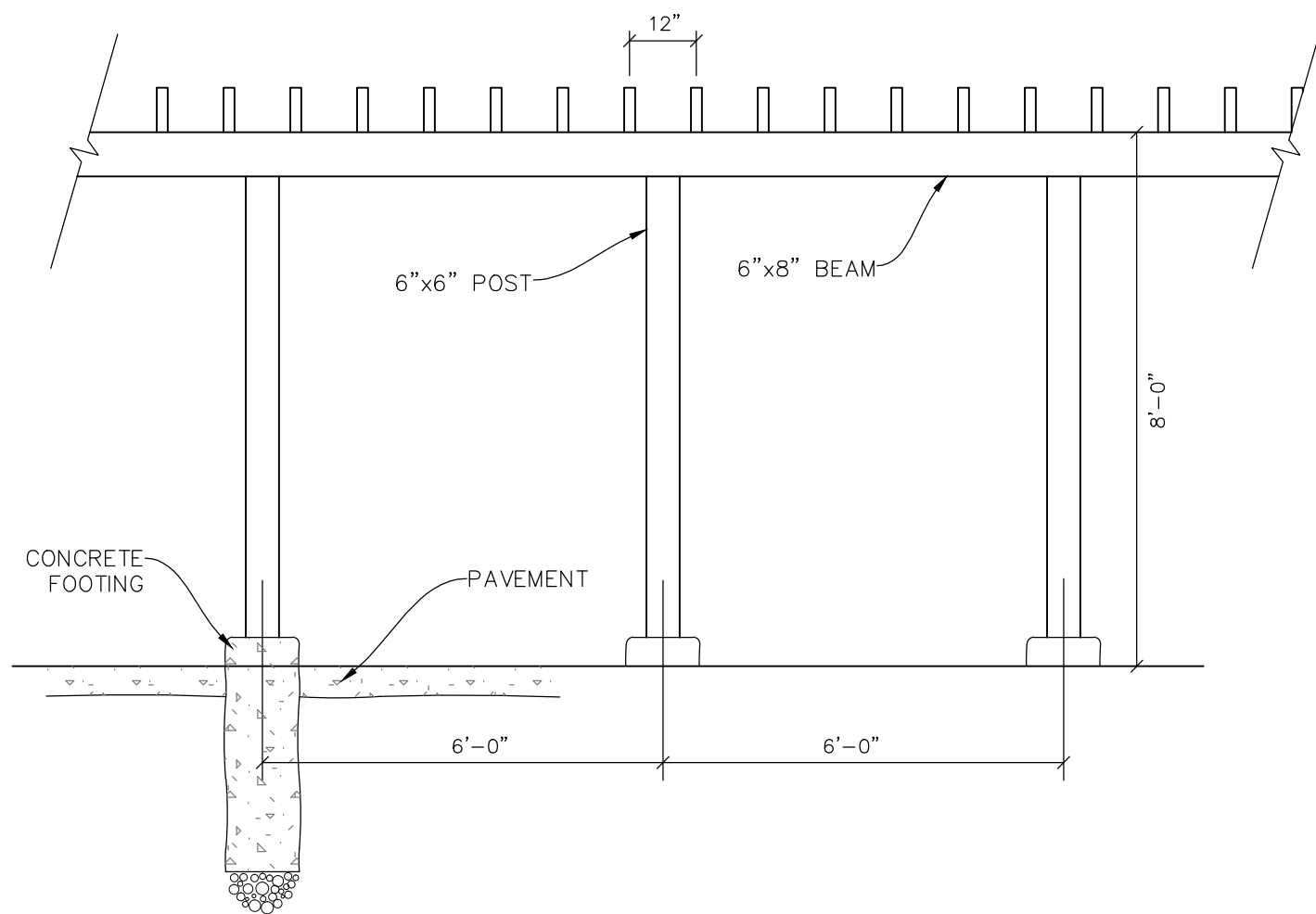
1" = 10' - 0"



Building Pergola Detail

Scale:

1" = 10' - 0"

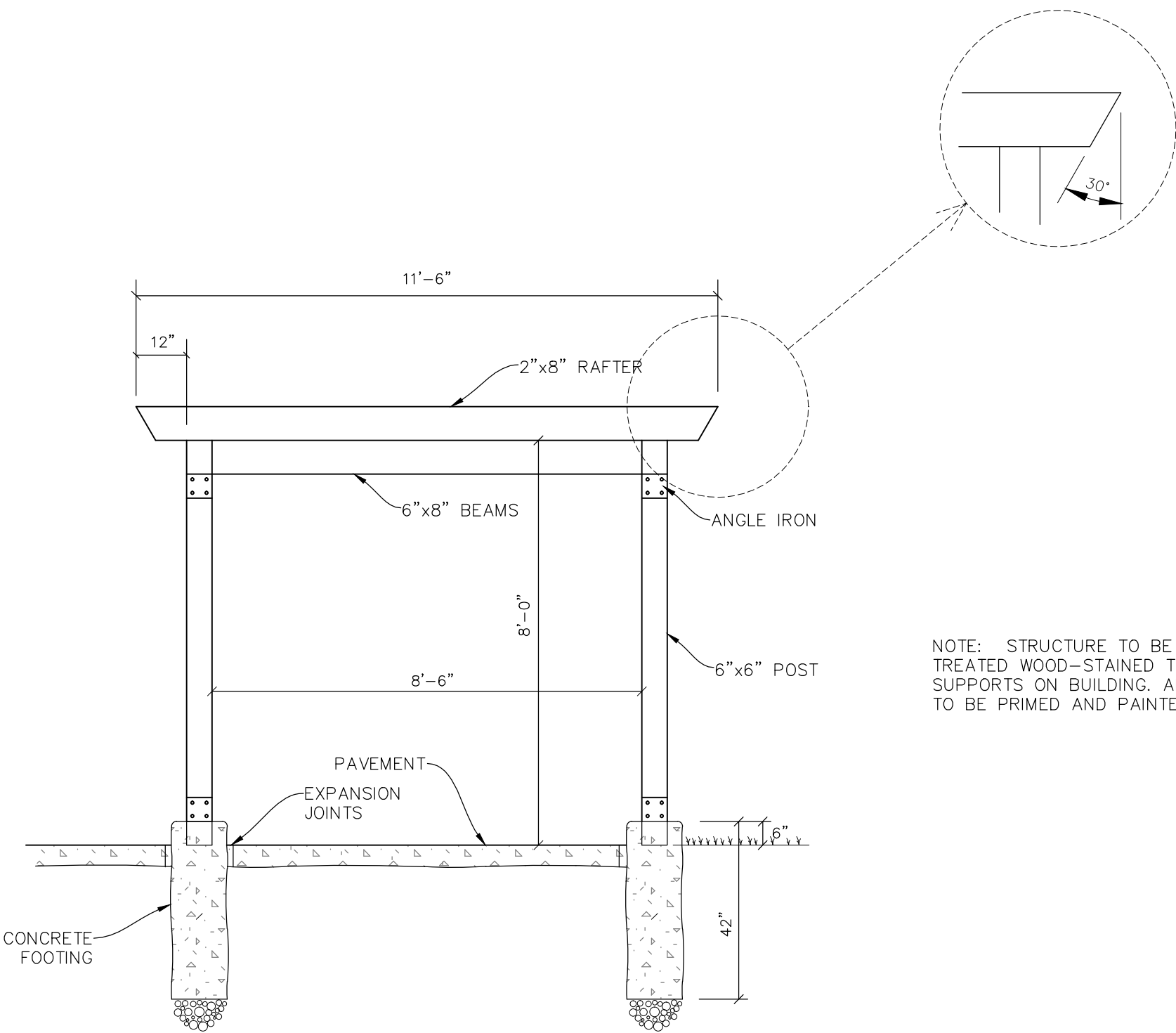


Pergola - Front View

Scale:

3/8" = 1' - 0"

NOTE: STRUCTURE TO BE PRESSURE TREATED WOOD-STAINED TO MATCH SUPPORTS ON BUILDING. ALL HARDWARE TO BE PRIMED AND PAINTED BLACK.



Pergola - Side View

Scale:

3/8" = 1' - 0"

NOTE: STRUCTURE TO BE PRESSURE TREATED WOOD-STAINED TO MATCH SUPPORTS ON BUILDING. ALL HARDWARE TO BE PRIMED AND PAINTED BLACK.

BOARD APPROVED

Case No: 2016-0862  
Date: 04/27/2016  
W/Out Conditions: X - Revised 8/15/17

VILLAGE OF ORLAND PARK

DATE	REVISIONS
4-19-16	REVISED PER VILLAGE COMMENTS
4-1-16	REVISED PER VILLAGE COMMENTS

Manhard

CONSULTING LTD

200 Woodside Parkway  
Naperville, IL 60563  
630.417.8888  
Civil Engineers • Surveyors • Water Resource Engineers • Water & Wastewater Engineers  
Construction Managers • Environmental Scientists • Landscape Architects • Planners

HEARTIS ORLAND PARK - SENIOR LIVING

ORLAND PARK, ILLINOIS

FINAL LANDSCAPE PLAN DETAILS

PROJ. MGR.: JC  
PROJ. ASSOC.: GMC1  
DRAWN BY: JBD  
DATE: 3-10-16  
SCALE: N.T.S.

SHEET  
L2 OF L3  
CADOPI01

THE ROOT COLLAR/FLARE SHALL BE 0 TO 1 INCHES ABOVE GROUND LEVEL AND NOT PLANTED UNDER GROUND LEVEL. NOTE THAT THE ROOT COLLAR IS TYPICALLY 1" TO 2" BELOW THE ROOT BALL. REMOVE ALL TWINE & STRAPS & CUT BURLAP FROM TOP 1/3 OF ROOTBALL. NO SYNTHETIC BURLAP WILL BE ACCEPTED.

Diagram illustrating the correct installation of a tree root collar/flare. The diagram shows a cross-section of a tree trunk and root system. The root collar/flare is positioned 0 to 1 inch above ground level. The root ball is shown with a 12" minimum diameter. The root collar/flare is wrapped with tree wrap, which is secured with a 4" wide, 4-inch deep saucer. The saucer is filled with backfill soil. The root collar/flare is secured with a rope from the top 1/3 of the ball. The root collar/flare is secured with a rope from the top 1/3 of the ball. The root collar/flare is secured with a rope from the top 1/3 of the ball.

Labels in the diagram:

- TREE WRAP
- 4" SHREDDED BARK MULCH
- 4 INCH DEEP SAUCER
- BACKFILL SOIL
- UNDISTURBED SUBSOIL
- REMOVE BURLAP & ROPE FROM TOP 1/3 OF THE BALL

Dimensions:

- 12" MIN (Root Ball Diameter)
- 2" MIN (Tree Trunk Diameter)
- 0 to 1" (Root Collar/Flare Height Above Ground)

## DECIDUOUS TREE

## ORNAMENTAL TREE



PARKING LOT ISLAND

Diagram illustrating the cross-section of a tree planting island with the following components labeled:

- SEE SHADE TREE DETAIL
- SOIL IN PLANTING ISLAND TO BE MOUNDED 12" ABOVE TOP OF CURB
- SHREDDED BARK MULCH
- BACKFILL SOIL
- FINISHED GRADE IS 1" BELOW TOP OF CURB
- CURB BY OTHERS
- PAVING BY OTHERS

## SHADE TREE IN ISLAND

TRIANGULATE PERENNIALS IN MASS PLANTINGS UNLESS OTHERWISE SPECIFIED.

GROUND COVER—PERENNIAL PLANT

FINISHED GRADE

SEE NOTE 1

2" MUSHROOM COMPOST

SUB-GRADE

SOIL MIXTURE:  
1/3 MUSHROOM COMPOST,  
1/3 SAND,  
AND 1/3 TOPSOIL

RAISE PLANTING BED ABOVE FINISHED GRADE AND MULCH TO A DEPTH OF 2"

## GROUNDCOVER AND PERENNIALS

## SHRUB PLANTING

Diagram illustrating a landscape design with various plant types and mulch bed edges. The design includes:

- SHADE TREE
- ORNAMENTAL TREE
- EDGE OF MULCH BED (TYP.)
- DECIDUOUS SHRUB
- EVERGREEN TREE
- EDGE OF MULCH BED (TYP.)

## MULCH EDGE DETAIL

A cross-sectional diagram of a lawn sod area. The top layer is labeled 'LAWN/SOD AREA'. Below it is a layer of 'MULCH' consisting of small stones. The depth of the mulch layer is indicated as '4" MIN.'. Below the mulch is a layer of 'AMENDED SOIL' with a hatched pattern. The amended soil layer has a depth of '6" MIN.'. The diagram shows a transition from the mulch layer to the amended soil layer, with a '6" MIN.' dimension for the amended soil layer and a '3"' dimension for the mulch layer.

## CONTINUOUS MULCH

April 11, 2016 - 15:13 Dwg Name: P:\Ostopil01\dwg\Landplan\Preliminary\LANDSCAPE DETAILS 4-1-16.dwg Updated By: bdeethloff

DATE	REVISIONS	DRAWN BY
		JBD
4-19-16	REVISED PER VILLAGE COMMENTS	JBD
4-1-16	REVISED PER VILLAGE COMMENTS	JBD

**Manhard**  
CONSULTING LTD.

800 Woodlawn Parkway, Vernon Hills, IL 60061    pr:847.263.4550    fx:847.263.0065    [manhard.com](http://manhard.com)  
Civil Engineers • Surveyors • Water Resources Engineers • Water & Wastewater Engineers • Environmental Engineers

**HEARTIS ORLAND PARK - SENIOR LIVING**

**ORLAND PARK, ILLINOIS**

## FINAL LANDSCAPE PLAN DETAILS

PROJ. MGR.: JC  
PROJ. ASSOC.: GMC1  
DRAWN BY: JBD  
DATE: 3-10-16  
SCALE: N.T.S.

SHEET

**L3** OF **L3**

CADOPIL01