



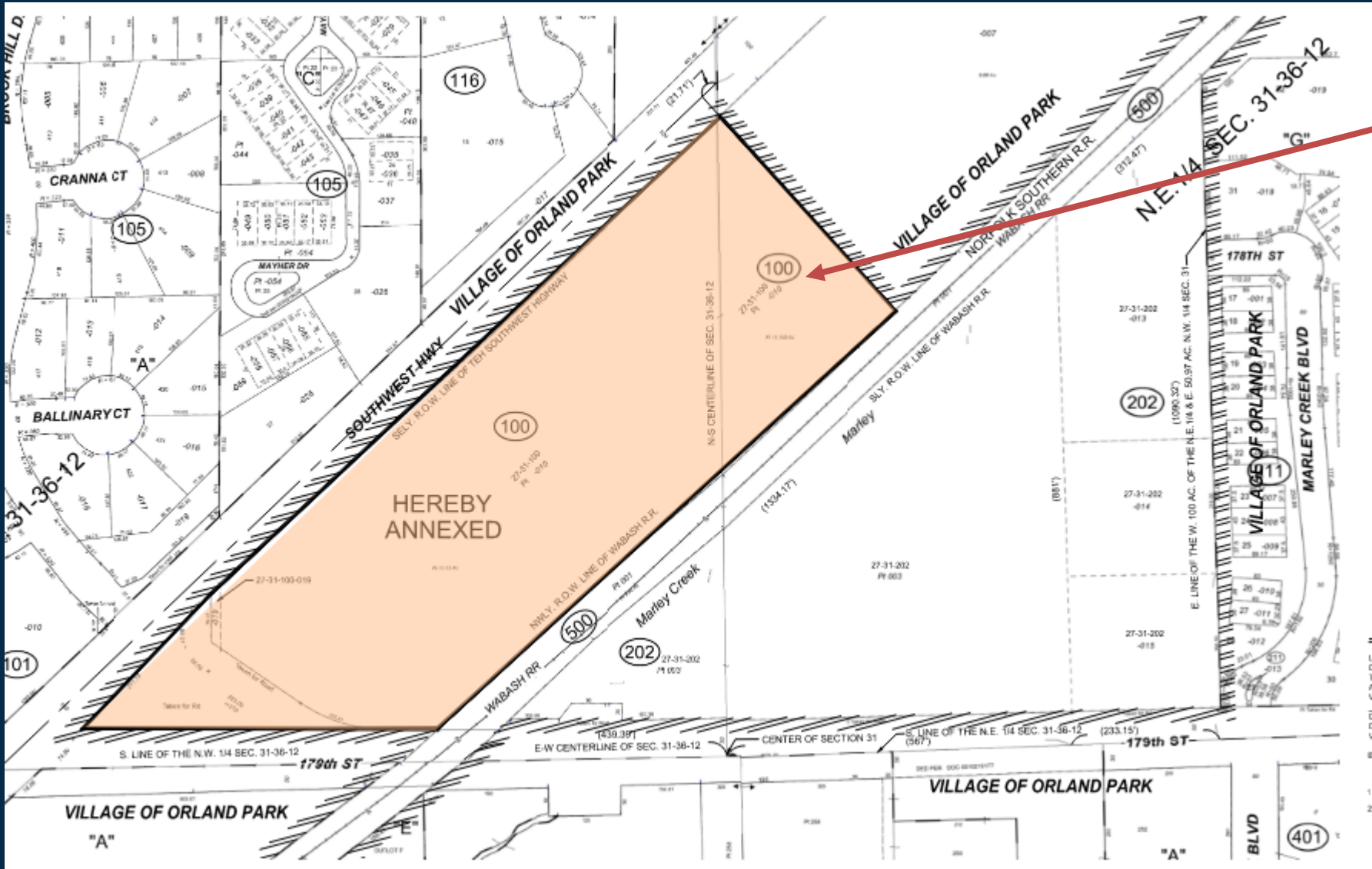
**ORLAND  
PARK**

# **Annexation**

**April 20, 2026**

**179<sup>th</sup> and Railroad Tracks**

**RTA Property**



RTA owned property

IL SB – 2111 People  
over Parking Act,  
effective in mid 2026

Per IL SB - 2111, NITA  
replaces RTA, and will  
have authority to own  
and develop land for  
transit- supportive  
projects

# 179<sup>th</sup> and Railroad Tracks



Problematic uses that are Permitted Uses in the Cook County I-1 Restricted Industrial District, include but are not limited to the following:

Industrial Uses including construction yards, machine shops, industrial launderers, packing and crating services, fabrication, processing, assembly of materials, products and goods;

Wholesale and warehouse uses - including automotive storage, beverage distributors, self-storage and mini warehouse facilities, wholesale establishments;

Retail businesses including bars, taverns, cocktail lounges, machinery sales, automotive repair shops.

