

BASE POINT LOCATIONS:

- A S 48.0' E 100.0' Center Point of Shelter
B S 42.9' E 76.8' Center Point of 2-5 Year Old Play Area
C S 79.1' E 93.8' Center Point of Swing Play Area
D S 59.1' E 120.1' Center Point of 5-12 Year Old Play Area

NOTES:

1. Denotes center point location for play areas & shelter

© 2014 Ives/Ryan Group, Inc.
Copyright 2014 Ives/Ryan Group, Inc., all rights reserved. The design and any and all ideas contained herein are the sole property of the Ives/Ryan Group, Inc. Reproduction of the design or concept embodied herein in any form, in whole or in part, without the consent of the Ives/Ryan Group, Inc. is Prohibited

REVISIONS

1	Village Review Comments	2-6-15
2	Landscape Review Comments #2	3-5-15

DEER HAVEN
ESTATES II

ORLAND PARK, ILLINOIS

BOARD APPROVED

Case No.:
Date:
W/Conditions:
W/Out Conditions:

VILLAGE OF ORLAND PARK



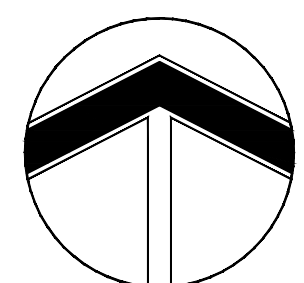
IRG Ives/Ryan Group, Inc.
324 N. EISENHOWER LANE
LOMBARD, IL 60148
PHONE: 630.717.0726

Landscape Architecture
Park & Recreation Design
Site & Community Planning
www.ivesryangroup.com

PARK
LAYOUT PLAN

PROJECT NO.: JOB NO.:
L214 - 8582A

DATE: 12-23-14 SHEET
SCALE: AS NOTED
PLANNER: RM
DRAWN BY: RM
CHECKED: L-3



CALL
JULIE
48 HOURS
BEFORE YOU DIG
1-800-892-0123
TOLL FREE
Operates 24 Hours
Every Day

1. Excavate and grade area as necessary to establish sub-grade for new concrete walk and shelter pad. If needed, import clean compactable clay fill to establish subgrade elevations. Furnish and install aggregate base and reinforced concrete to the elevations shown on plan. Provide tooled scoring joints and 1/2" expansion joints as indicated on the plan. Backfill where needed with 6" minimum topsoil material and blend into surrounding grade. Import clean topsoil material as necessary to fulfill requirements if no on-site topsoil stockpile is present. (See detail)

2. Excavate and grade area as necessary to establish sub-grade for new 8' asphalt path. If needed, import clean compactable clay fill to establish subgrade elevations. Furnish and install aggregate base and asphalt paving to the elevations shown on plan. Pitch path a minimum of 1% or as shown on the plan. Longitudinal grade shall not exceed 1:20 or 5%, cross pitch shall not exceed 2%. Contractor to backfill with 6" minimum topsoil material and blend into surrounding grade. Import clean topsoil material as necessary to fulfill requirements if no on-site topsoil stockpile is present. (See detail)

3. Excavate as necessary and furnish and install 6"x12" Concrete Play Area Curb. Provide ¾" expansion joint with dowels and expansion caps where proposed concrete curb meets proposed concrete walk/shelter pad and as noted on detail. Provide saw cut control joints as noted on detail. Backfill where needed with 6" minimum topsoil material and blend into surrounding grade. Import clean topsoil material as necessary to fulfill requirements if no on-site topsoil stockpile is present. (See detail)

4. Furnish, assemble and install 2-5 yr. old play structure as indicated on the Play Apparatus and Materials Schedule. Installation must follow manufacturer's installation instructions. Installation must also conform to the current editions of ASTM F1487, Standard Consumer Safety Performance Specification for Playground Equipment for Public Use, by the American Society for Testing and Materials, and Public Playground Safety Handbook by the Consumer Product Safety Commission.

5. Furnish, assemble and install 5-12 yr. old play structure as indicated on the Play Apparatus and Materials Schedule. Installation must follow manufacturer's installation instructions. Installation must also conform to the current editions of ASTM F1487, Standard Consumer Safety Performance Specification for Playground Equipment for Public Use, by the American Society for Testing and Materials, and Public Playground Safety Handbook by the Consumer Product Safety Commission.

6. Furnish, assemble and install swing set as indicated on the Play Apparatus and Materials Schedule. Installation must follow manufacturer's installation instructions. Installation must also conform to the current editions of ASTM F1487, Standard Consumer Safety Performance Specification for Playground Equipment for Public Use, by the American Society for Testing and Materials, and Public Playground Safety Handbook by the Consumer Product Safety Commission.

7. Furnish and install a 12'x12' Wooden Frame Park Shelter per representative detail. Contractor shall design and submit shop drawings for its construction and submit to the Village of Orland Park Parks Department for approval prior to construction. (See detail)

9. Furnish, assemble and install 46" Square Table as indicated on the Play Apparatus and Materials Schedule. (See detail)

10. Excavate or fill area with compacted clay material to the subgrade elevation shown. Subgrade must pitch a minimum of 1% to the nearest underdrain trench. Furnish and install an Engineered Wood Fiber Safety Surfacing and filter fabric. Engineered wood fiber safety surfacing material must meet the current Consumer Products Safety Commission (CPSC) recommendations; Americans with Disabilities Act (ADA) requirements; passes Head Impact Attenuation Test ASTM F1292, passes Wheelchair Accessibility Test ASTM F1951; passes Sieve Analysis, Tramp Metal & Heavy Metal Test ASTM F2075; and is International Play Equipment Manufacturers Association (IPEMA) certified.

12. Furnish and install playground underdrainage system. (See detail)

14. Furnish and install underdrainage pop-up outlet. (See detail)

15. Furnish and install concrete access walks. (See detail)

<u>ITEM</u>	<u>QTY.</u>	<u>DESCRIPTION</u>
2-5 Yr. Old Play Structure	1	PlaySense Design 30 Model # 176124A By: Landscape Structures (800) 438-6574
5-12 Yr. Old Play Structure	1	PlaySense Design 600 Model # 182414A By: Landscape Structures (800) 438-6574
Swing Frame	1	Single Post Swing Frame 8' Beam Model # 177332A By: Landscape Structures (800) 438-6574
Swing Frame	1	Single Swing Bay Custom Order By: Landscape Structures (800) 438-6574
Belt Swing Seat	2	Belt Seat Proguard Chain 8' Beam Model # 174018A By: Landscape Structures (800) 438-6574
Bucket Swing Seat	1	Full Bucket Seat Proguard Chain 8' beam Model # 176038A By: Landscape Structures (800) 438-6574
Picnic Table	1	Signature Series 46 Square Pedestal ADA Accessible Table with 3 Seats Superior Frame - In-ground Mount Model # SG236D By: Wabash Valley Manufacturing, Inc (800) 253-8619
Bench	2	Signature Series 6' Bench Model # SG403D By: Wabash Valley Manufacturing, Inc (800) 253-8619

Palette K

Blue

Std.

Std.

Blue


$$1'' = 10'$$

$$1'' = 20'$$


SCALE 3/8"=1'-0"

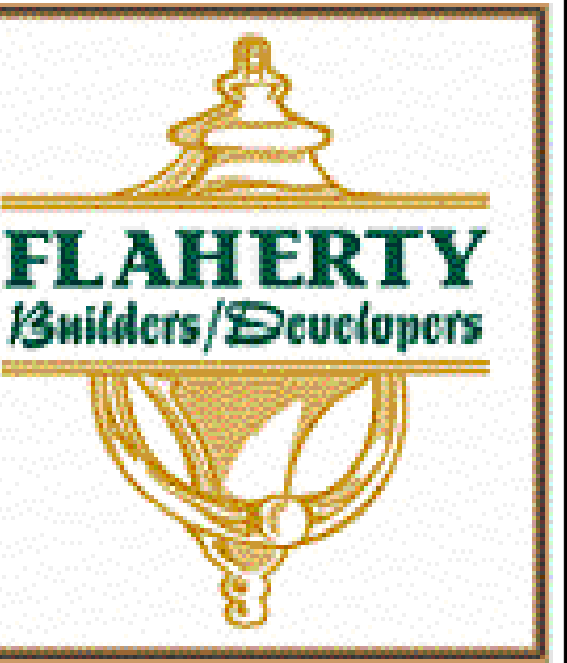


Landscape Review Comments #2	3-5-15
Village Review Comments	2-6-15

ORLAND PARK, ILLINOIS

Case No: _____
Date: _____
W/Conditions: _____
W/Out Conditions: _____

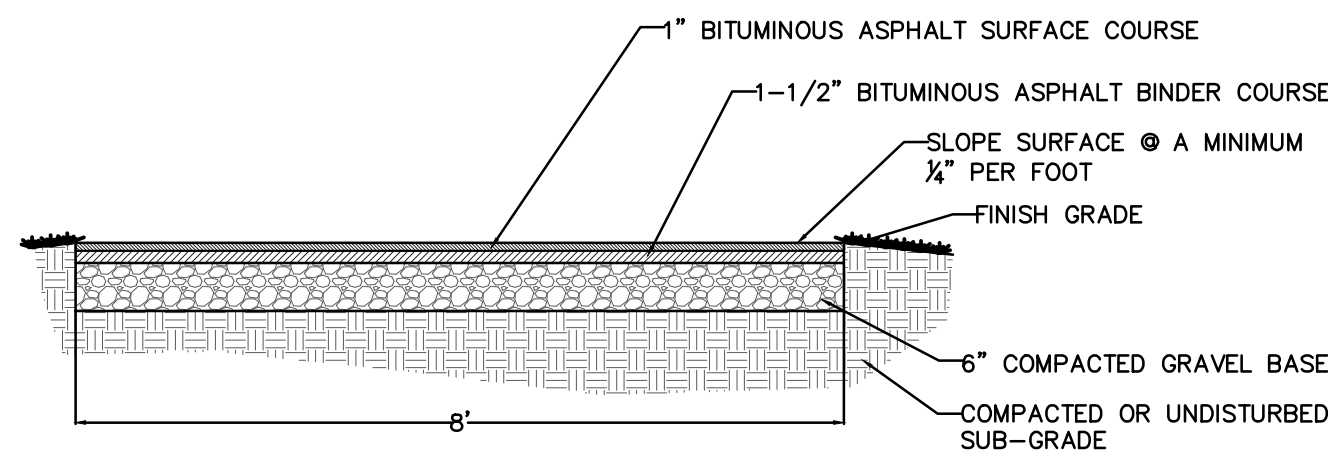
VILLAGE OF ORLAND PARK



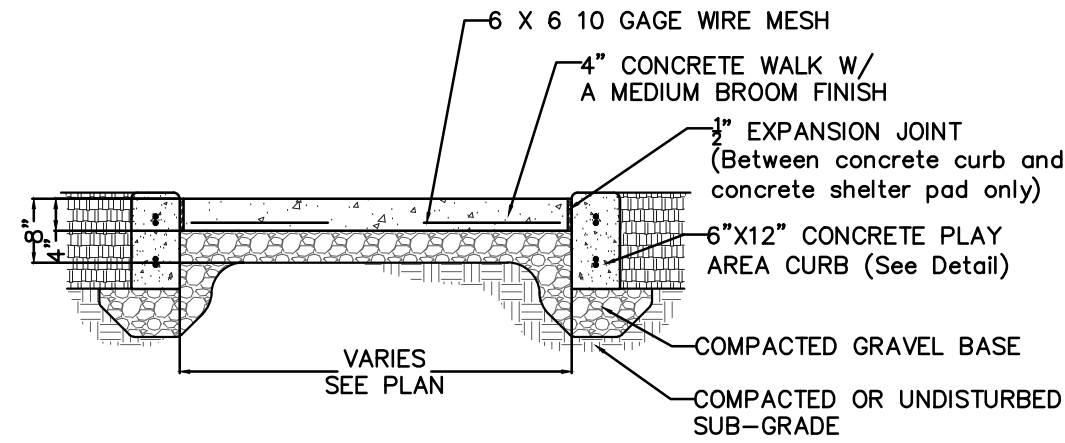
**Landscape Architecture
Park & Recreation Design
Site & Community Planning**
www.ivesryangroup.com

PROJECT NO.: JOB NO.:
L214 - 8582A

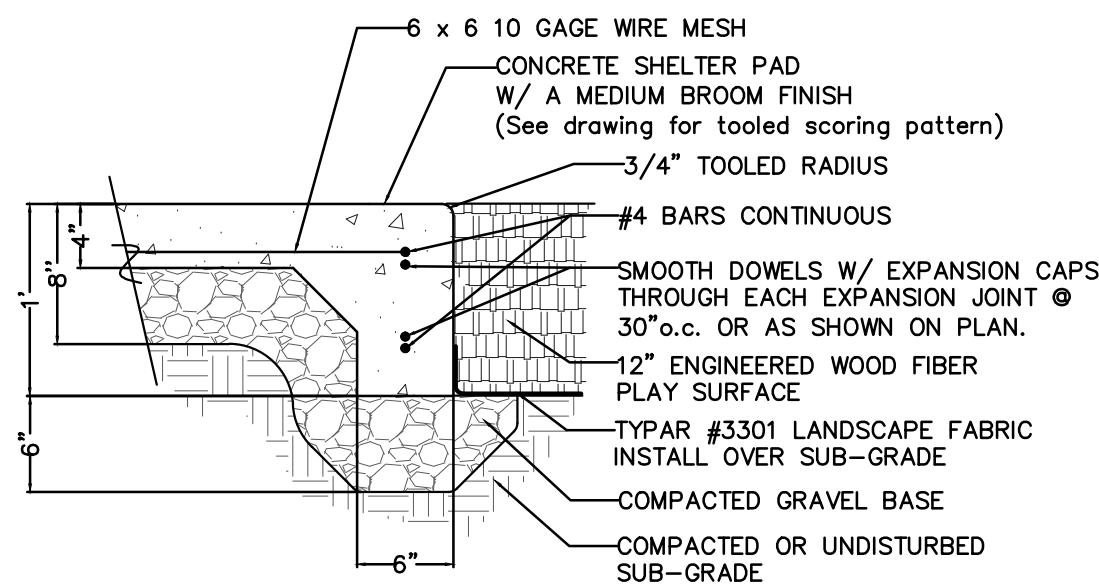
DATE: 12-23-14
SCALE: AS NOTED
DRAWN BY: RM
CHECKED: _____



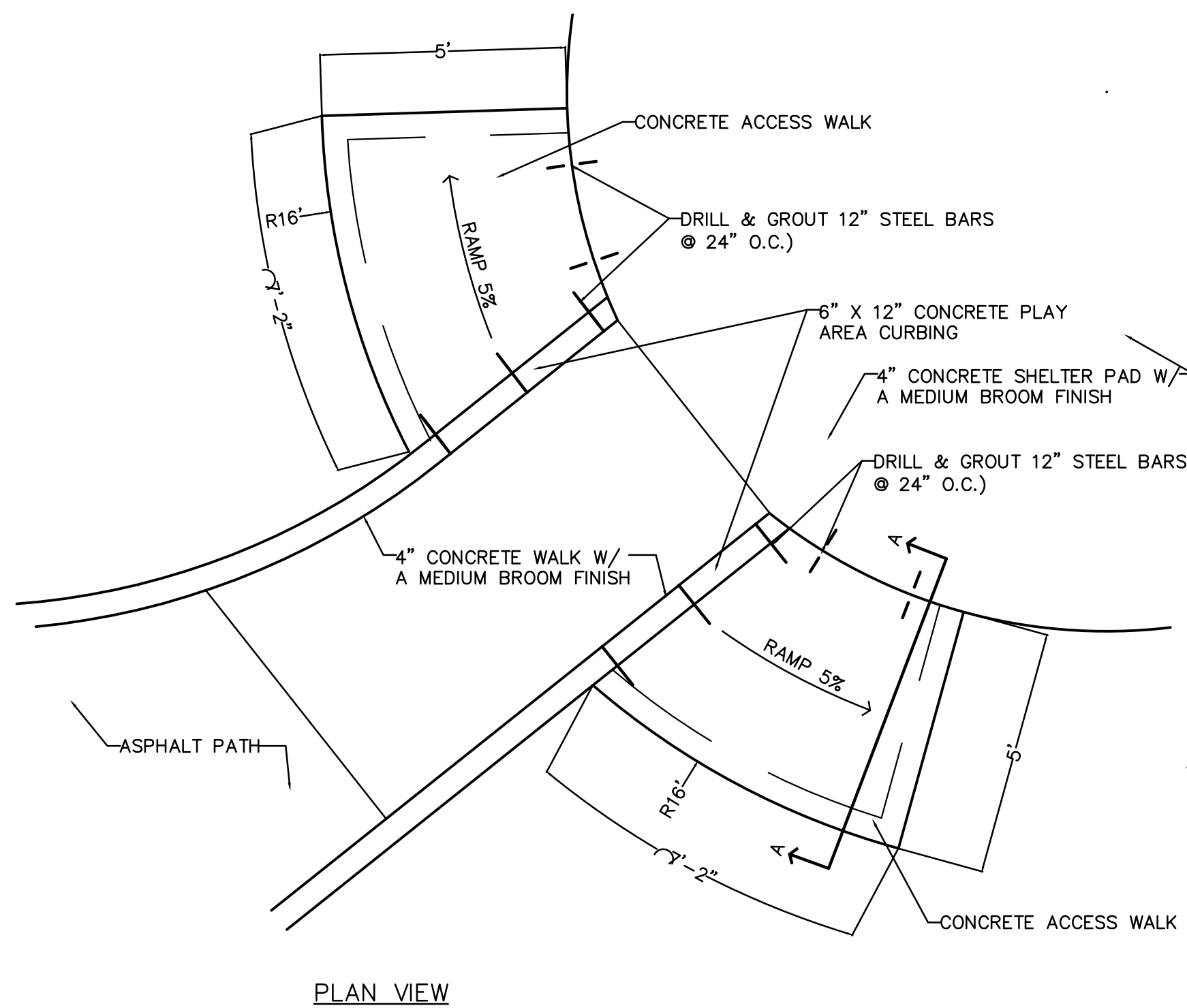
2 ASPHALT PATH
SCALE 1/2"=1'-0"



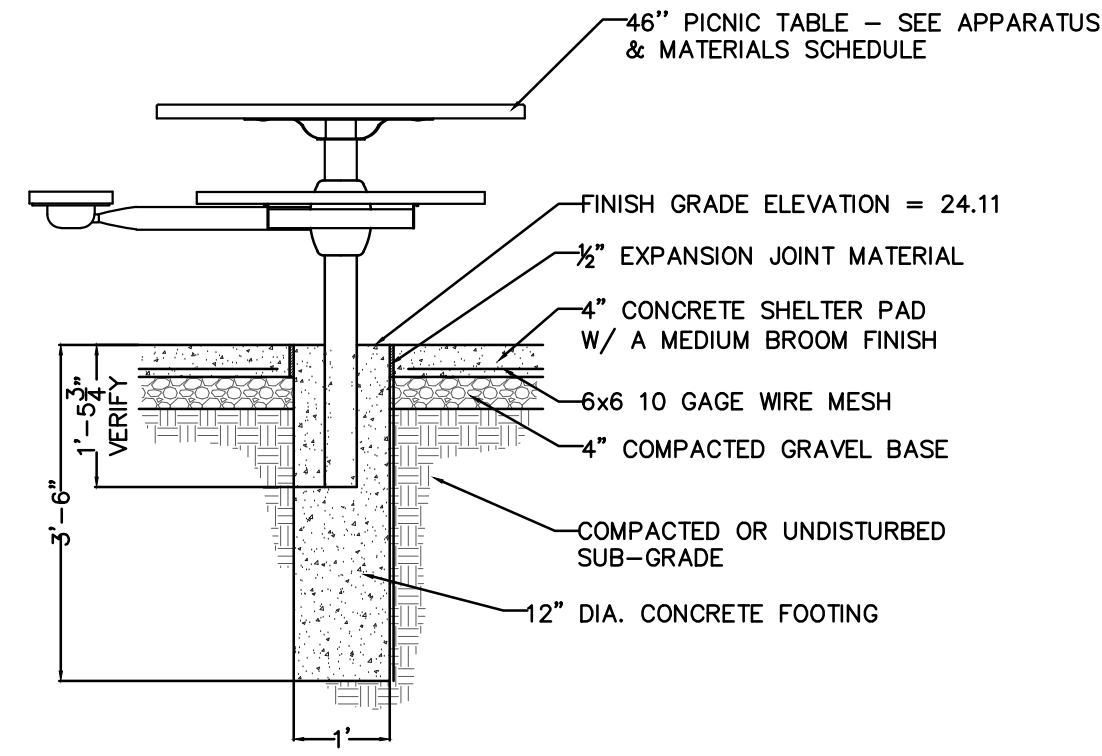
3 CONCRETE WALK
SCALE 1/2"=1'-0"



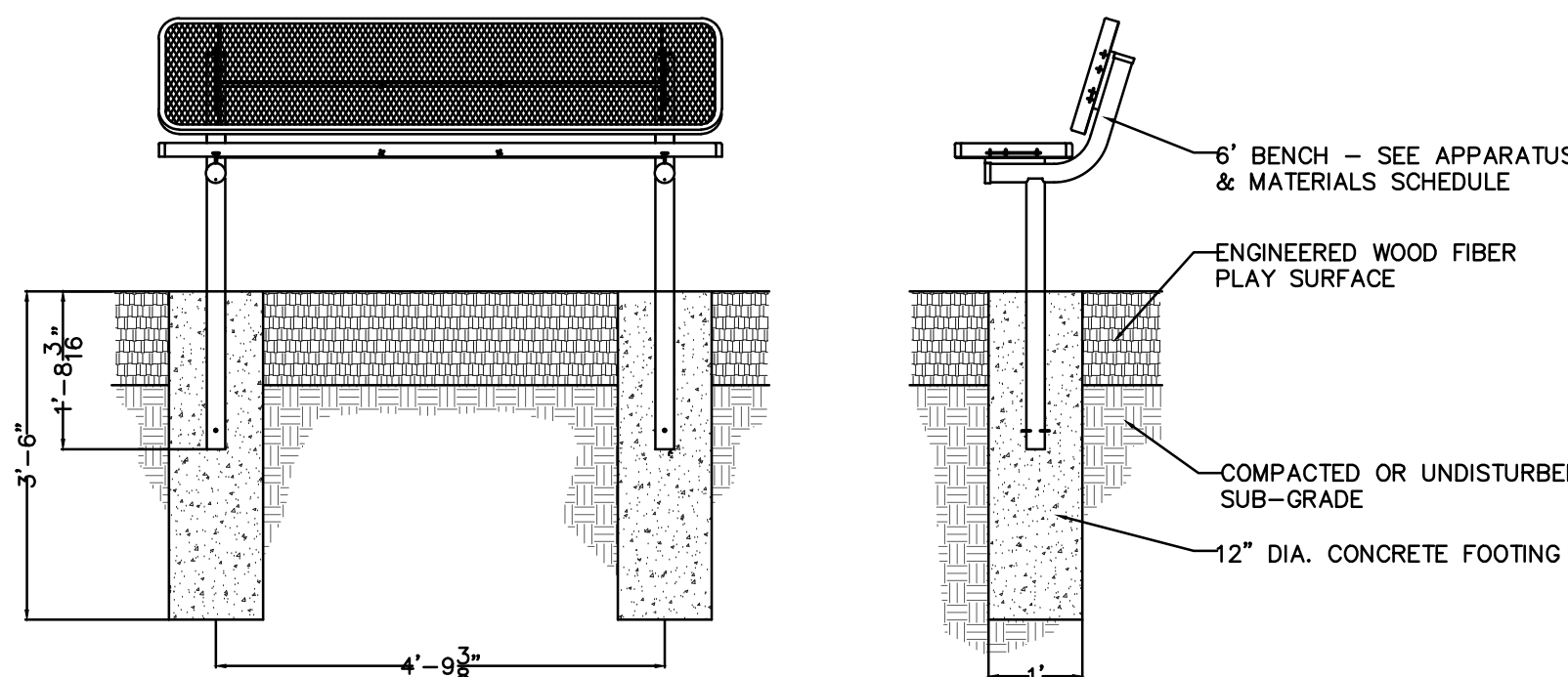
4 CURBED FACE CONCRETE PAD
SCALE 1"=1'-0"



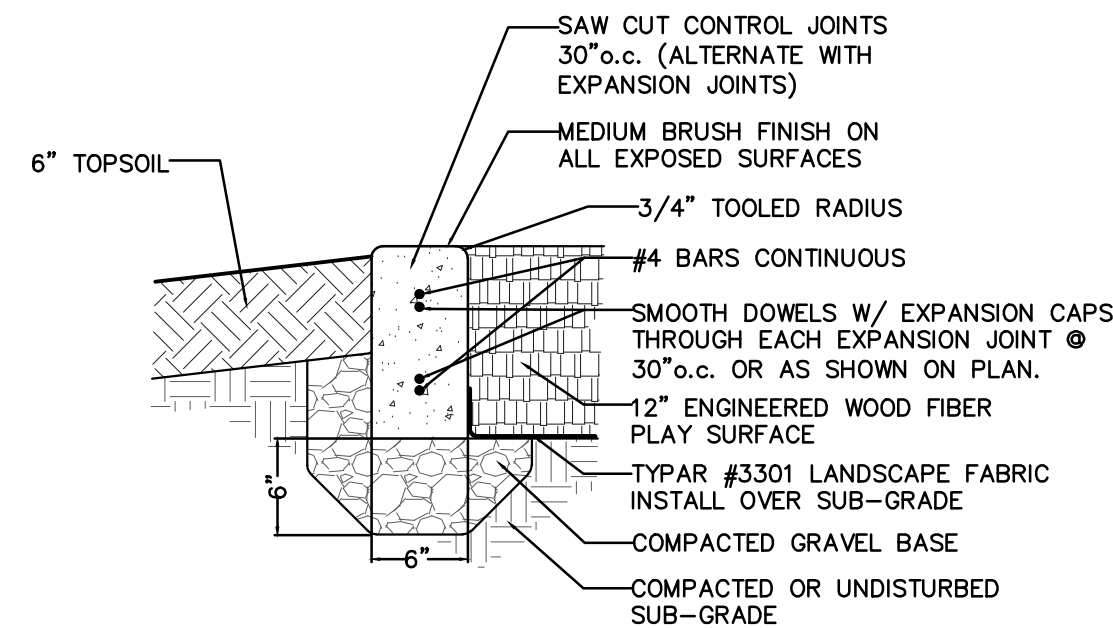
5 CONCRETE ACCESS WALK
SCALE 3/8"=1'-0"



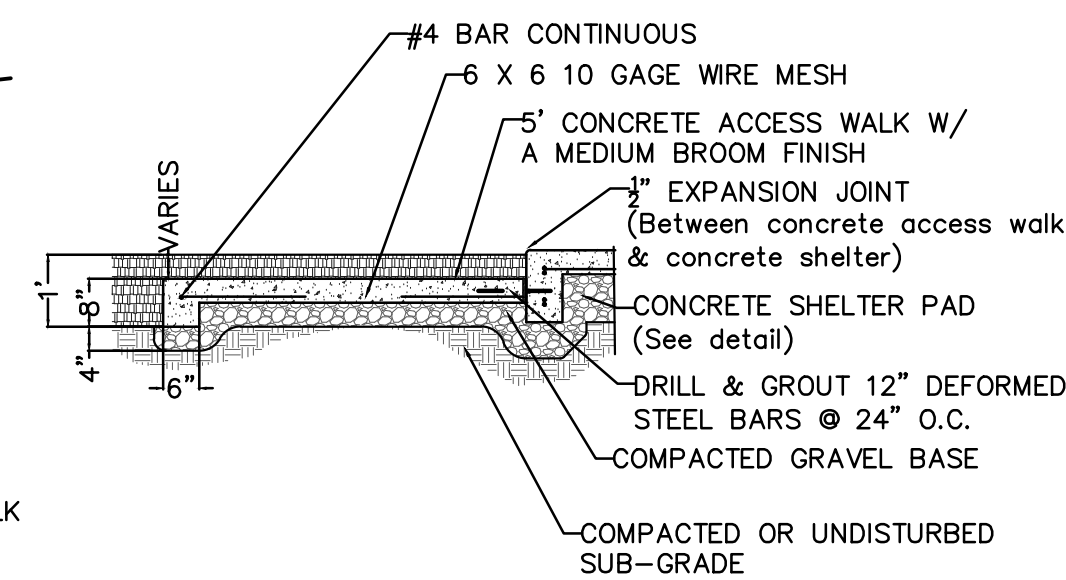
6 46" PICNIC TABLE
SCALE 1/2"=1'-0"



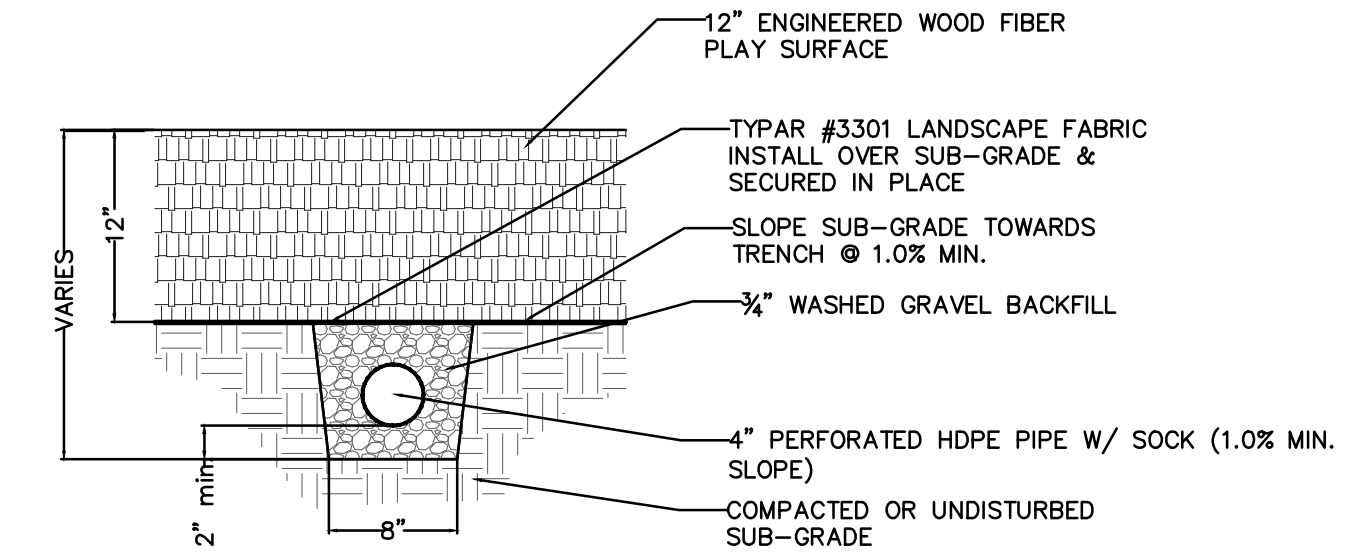
7 6' BENCH
SCALE 1/2"=1'-0"



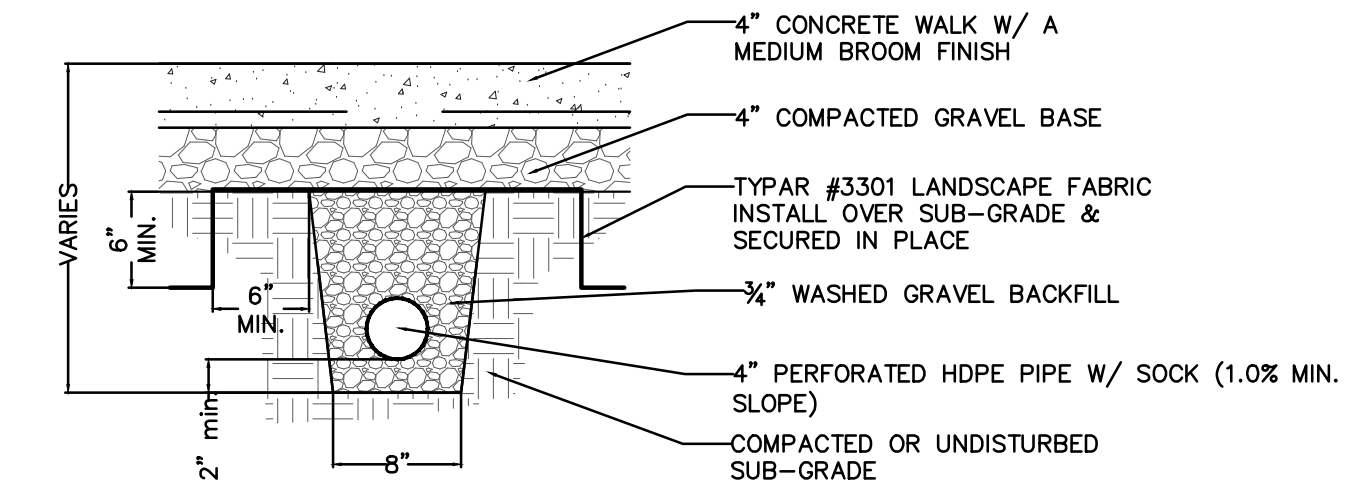
8 6"X12" CONCRETE CURB
SCALE 1"=1'-0"



9 WOOD FIBER PLAY SURFACE
SCALE 1"=1'-0"

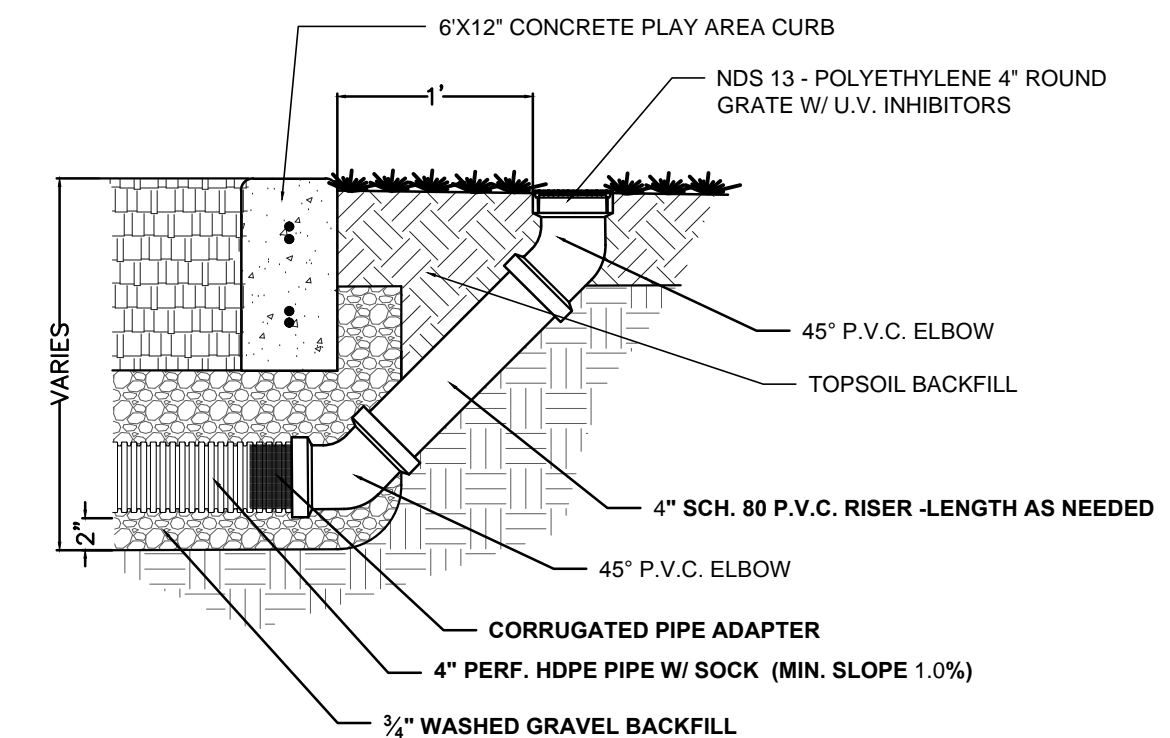


UNDER PLAY SURFACE

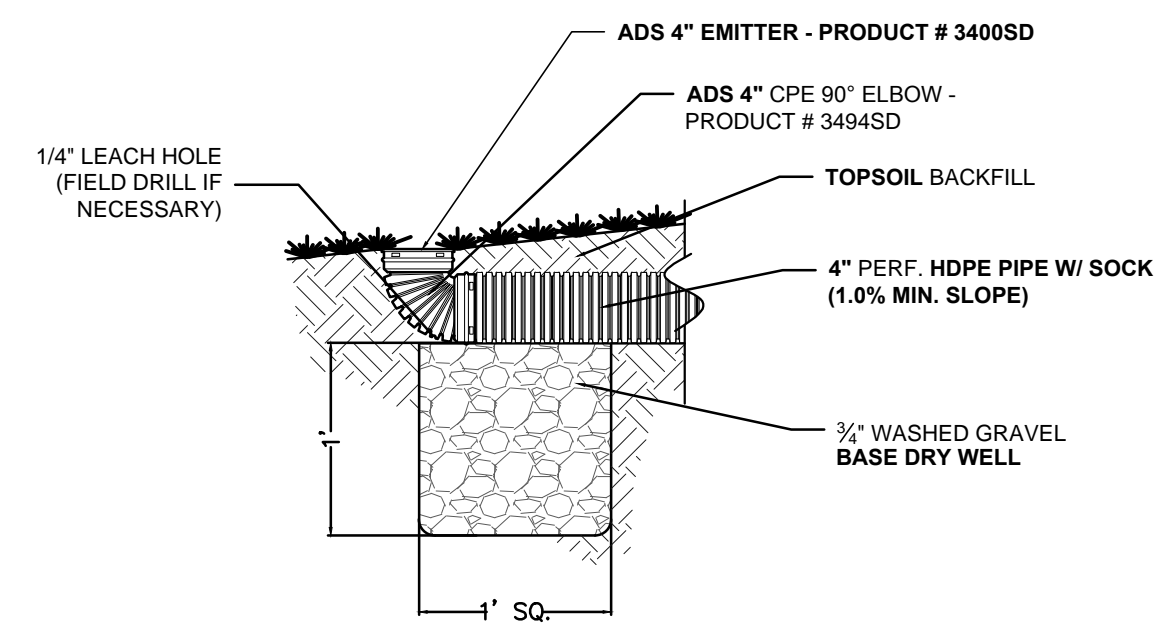


UNDER CONCRETE

10 UNDERDRAINAGE TRENCH
SCALE 1"=1'-0"



11 VENT/CLEAN-OUT
SCALE 1"=1'-0"



12 POP-UP EMITTER
SCALE 1"=1'-0"

© 2014 Ives/Ryan Group, Inc. Copyright 2014 Ives/Ryan Group, Inc., all rights reserved. The design and any and all ideas contained herein are the sole property of the Ives/Ryan Group, Inc. Reproduction of the design or concept embodied herein in any form, in whole or in part, without the consent of the Ives/Ryan Group, Inc. is Prohibited

REVISIONS

1	Village Review Comments	2-6-15
2	Landscape Review Comments #2	3-5-15

DEER HAVEN ESTATES II

ORLAND PARK, ILLINOIS

BOARD APPROVED

Case No: _____
Date: _____
W/Conditions: _____
W/Out Conditions: _____

VILLAGE OF ORLAND PARK



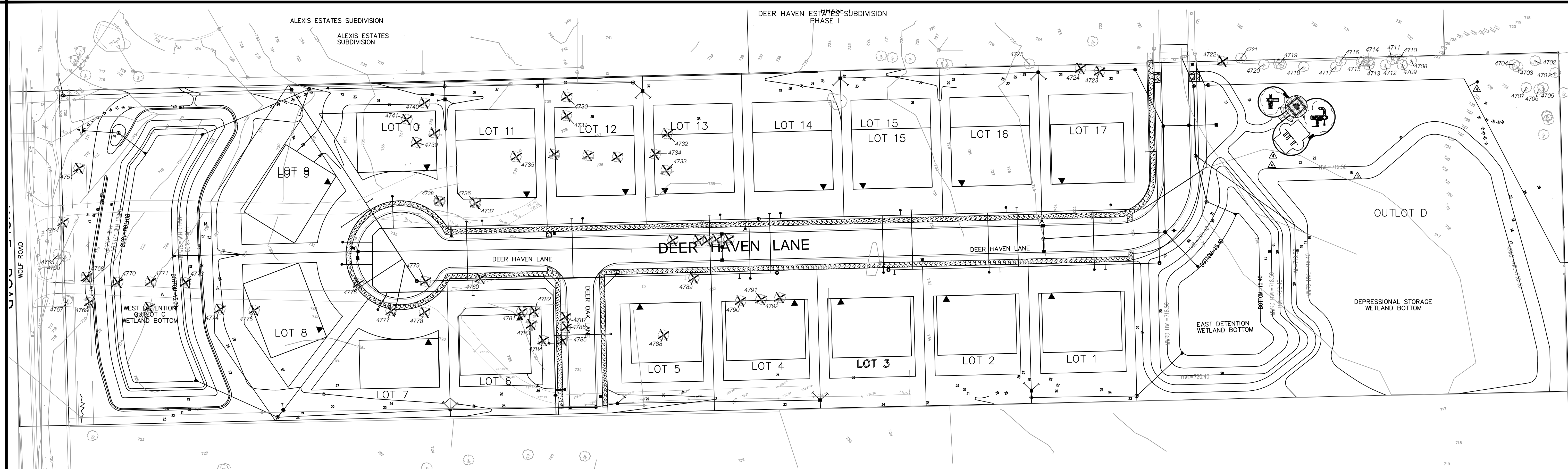
IRG Ives/Ryan Group, Inc.
324 N. EISENHOWER LANE
LOMBARD, IL 60148
PHONE: 630.717.0726

Landscape Architecture
Park & Recreation Design
Site & Community Planning
www.ivesryangroup.com

PARK DETAILS

PROJECT NO.: L214 - 8582A
JOB NO.: _____

DATE: 12-23-14
SCALE: 1"=20'
PLANNER: RM
DRAWN BY: RM
CHECKED: _____
SHEET
L-5



X = TREES TO BE REMOVED O = TREES TO BE MITIGATED

Tag #	DBH	Common Name	C	F	COMMENTS
4701	6"	Red Oak	3	3	
4702	27" total	Bur Oak	3	3	multi-stem
4703	36" total	Bur Oak	3	3	multi-stem
4704	16"	Bur Oak	3	3	
4705	8.5" total	Bur Oak	3	3	multi-stem
4706	4"	Bur Oak	3	3	
4707	4.5"	Pin Oak	3	3	
4708	5"	Bur Oak	3	3	
4709	10"	Bur Oak	3	3	
4710	8"	Wild Black Cherry	4	4	poor canopy- consider removal
4711	3.5"	Bur Oak	3	3	
4712	13"	Bur Oak	3	3	
4713	5"	Bur Oak	3	3	
4714	6"	Bur Oak	3	3	
4715	6"	Red Oak	3	3	
4716	7"	Wild Black Cherry	3	4	
4717	11"	Wild Black Cherry	4	4	poor canopy- consider removal
4718	15"	Red Oak	3	3	
4719	16"	Pin Oak	3	3	
4720	4"	Red Oak	3	3	
4721	20"	Bur Oak	3	3	
4722	7"	Shagbark Hickory	3	3	
4723	11"	Black Walnut	3	3	
4724	17"	Wild Black Cherry	3	4	
4725	19"	Ash	5	5	Eab infested-recommend removal
4726	4"	Wild Black Cherry	4	3	trunk wound-consider removal
4727	4"	Wild Black Cherry	3	3	
4728	12"	Bitternut Hickory	4	4	trunk wound-consider removal
4729	10"	Mulberry	4	4	split in trunk-consider removal
4730	28"	Pin Oak	3	3	
4731	23"	Honey Locust	3	3	
4732	20"	Ash	6	6	dead-recommend removal
4733	14"	Silver Maple	3	3	

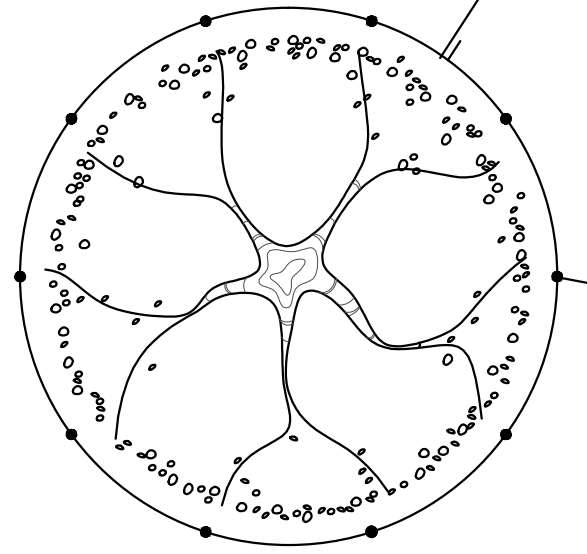
Tag #	DBH	Common Name	C	F	COMMENTS
4734	18"	Silver Maple	4	4	decay/carpenter ants-recommend removal
4735	24"	Silver Maple	3	3	
4736	25"	Honey Locust	3	3	
4737	28"	Ash	6	6	dead-recommend removal
4738	23"	Ash	6	6	dead-recommend removal
4739	13"	Ash	6	6	dead-recommend removal
4740	70" total	Silver Maple	4	4	multi-stem, decay/carpenter ants-recommend removal
4741	6"	Red Elm	3	3	
4742	19"	Ash	6	6	dead-recommend removal
4743	9"	Black Walnut	3	3	
4744	12"	Red Elm	3	4	
4745	6.5"	Ash	5	5	dead-recommend removal
4746	12"	Ash	6	6	dead-recommend removal
4747	10"	Buckthorn	3	3	female tree-recommend removal
4748	20" total	Buckthorn	3	3	multi-stem-recommend removal
4749	12"	Mulberry	3	3	
4750	6"	Ash	6	6	dead-recommend removal
4751	13"	Ash	6	6	dead-recommend removal
4752	8"	Ash	6	6	dead-recommend removal
4753	10"	Ash	6	6	dead-recommend removal
4754	7"	Ash	6	6	dead-recommend removal
4755	28" total	Black Willow	3	4	multi-stem-leans towards Wolf. Rd.
4756	7"	Ash	6	6	dead-recommend removal
4757	6.5"	Ash	6	6	dead-recommend removal
4758	28"	Cottonwood	3	4	
4759	22"	Cottonwood	4	5	hollow at base-recommend removal
4760	16"	Cottonwood	3	4	
4761	20"	Cottonwood	3	4	
4762	7"	Ash	6	6	dead-recommend removal
4763	5"	Ash	6	6	dead-recommend removal
4764	5"	Ash	4	4	Eab infested-recommend removal
4765	13"	Mulberry	3	3	
4766	14"	Red Elm	3	3	

Tag #	DBH	Common Name	C	F	COMMENTS
4767	5"	Blue Spruce	4	4	spider mites and canker presence-recommend removal
4768	4"	Blue Spruce	4	4	spider mites and canker presence-recommend removal
4769	4"	Blue Spruce	4	4	spider mites and canker presence-recommend removal
4770	18"	Silver Maple	3	3	
4771	20" total	Linden	4	4	multi-stem. Trunk injury-recommend removal
4772	14"	Sugar Maple	3	3	
4773	18"	Ash	6	6	dead-recommend removal
4774	25"	Ash	6	6	dead-recommend removal
4775	27"	Silver Maple	3	3	
4776	19"	Ash	6	6	dead-recommend removal
4777	26"	Silver Maple	3	3	
4778	22"	Silver Maple	3	3	
4779	16"	Silver Maple	3	3	
4780	14"	Silver Maple	3	3	
4781	14"	Silver Maple	3	3	
4782	12"	Cedar	3	3	
4783	8"	Norway Spruce	3	3	
4784	27"	Silver Maple	3	3	
4785	10"	Norway Spruce	3	3	
4786	24"	Silver Maple	3	3	
4787	20"	Silver Maple	3	3	
4788	23"	Ash	6	6	dead-recommend removal
4789	48"	Silver Maple	3	3	
4790	30"	Silver Maple	3	3	
4791	19"	Ash	6	6	dead-recommend removal
4792	20"	Silver Maple	3	3	

ALL EXISTING LANDSCAPING NOTED FOR PRESERVATION, SHALL BE PROTECTED DURING CONSTRUCTION VIA PLASTIC SAFETY FENCING. FENCING SHALL BE 4' HIGH AND ATTACHED TO STEEL DRIVEN POSTS SET NO FARTHER THAN 8' O.C. IT SHALL BE INSTALLED AT THE PERIPHERY OF THE DRIP LINE OF EXISTING PLANT MATERIAL OR BEYOND TO PREVENT STORAGE OF VEHICLES OR MATERIALS AND THE ENROACHMENT OF GRADING AND CONSTRUCTION EQUIPMENT.

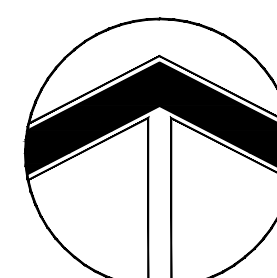
CONSTRUCTION FENCING SHALL BE ERECTED PRIOR TO ANY GRADING OR CONSTRUCTION ACTIVITIES—PREVENTING COMPACTION OF ROOT SYSTEMS OF EXISTING TREES AND SHRUBS. THE FENCING SHALL ENCLOSE THE AREA BENEATH THE DRIP LINE OF THE TREE CANOPY AND SHALL REMAIN IN PLACE UNTIL ALL CONSTRUCTION IS COMPLETED. NO PARKING, MATERIAL STORAGE OR CONSTRUCTION ACTIVITIES SHALL BE PERMITTED WITHIN THE FENCED AREA.

ORANGE POLYETHYLENE SAFETY FENCING
PLACED AT OR BEYOND DRIP-LINE



4' TALL DRIVEN STEEL POSTS @ 8' O.C. MAX.

TREE PRESERVATION DETAIL



CALL
JULIE
48 HOURS
BEFORE YOU DIG
1-800-892-0123
TOLL FREE
Operates 24 Hours
Every Day

TREE SURVEY PREPARED & PROVIDED BY:
HOMER TREE CARE INC.
14000 S. ARCHER AVENUE
LOCKPORT, IL 60441
AUG. 6, 2014

© 2014 Ives/Ryan Group, Inc.
Copyright 2014 Ives/Ryan Group, Inc., all rights reserved. The design and any and all ideas contained herein are the sole property of the Ives/Ryan Group, Inc. Reproduction of the design or concept embodied herein in any form, in whole or in part, without the consent of the Ives/Ryan Group, Inc. is Prohibited

REVISIONS

DEER HAVEN ESTATES II

ORLAND PARK, ILLINOIS

BOARD APPROVED

Case No: _____
Date: _____
W/Conditions: _____
W/Out Conditions: _____

VILLAGE OF ORLAND PARK



IRG Ives/Ryan Group, Inc.
324 N. EISENHOWER LANE
LOMBARD, IL 60148
PHONE: 630.717.0726

Landscape Architecture
Park & Recreation Design
Site & Community Planning
www.ivesryangroup.com

TREE PRESERVATION PLAN

PROJECT NO.: _____ JOB NO.: _____
L214 - 8582A

DATE: 12-23-14
SCALE: 1"=50'
PLANNER: JMR
DRAWN BY: RM
CHECKED: _____
SHEET TP-1