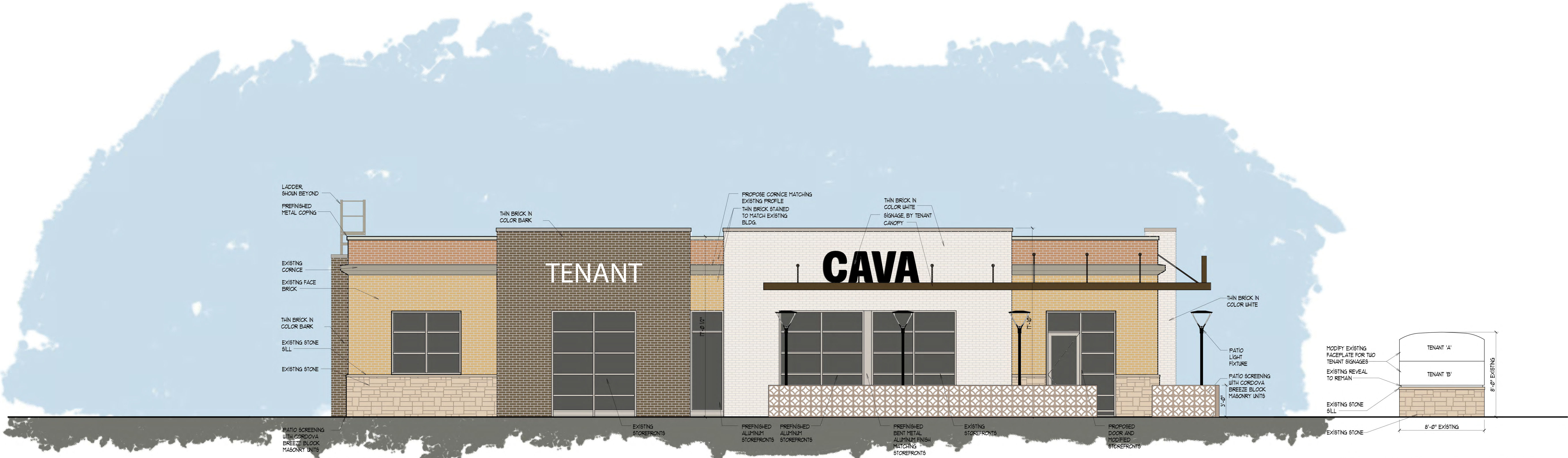


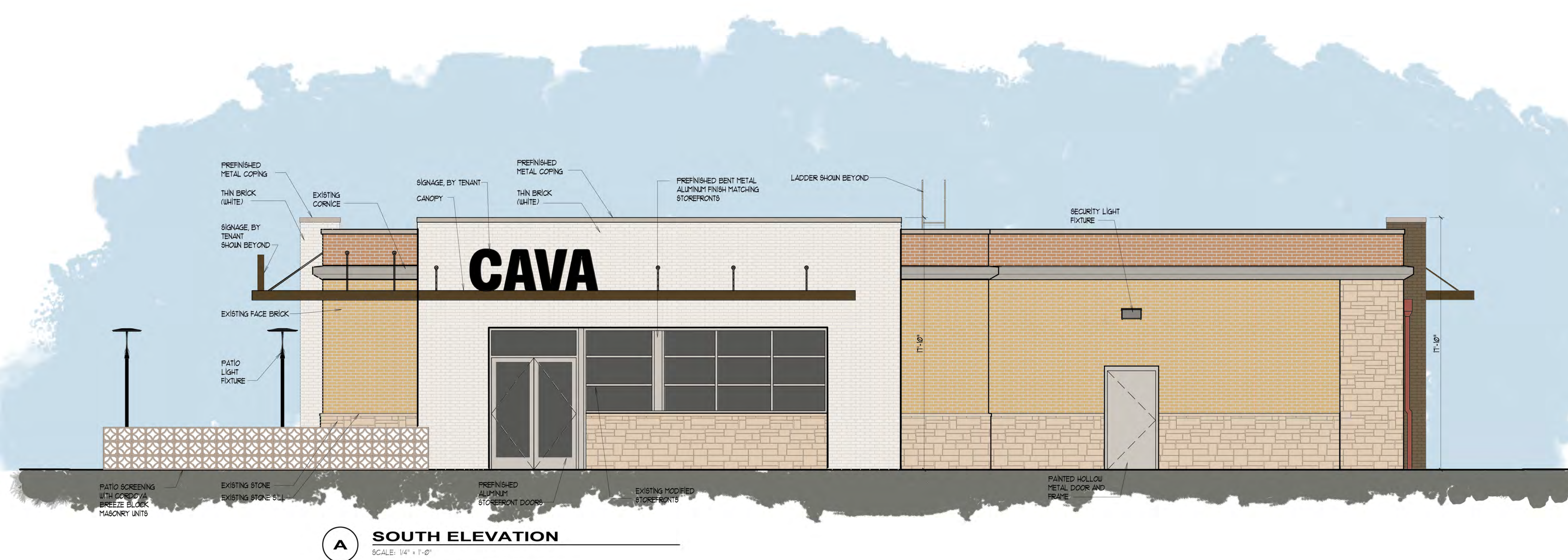


C NORTH ELEVATION
SCALE: 1/4" = 1'-0"

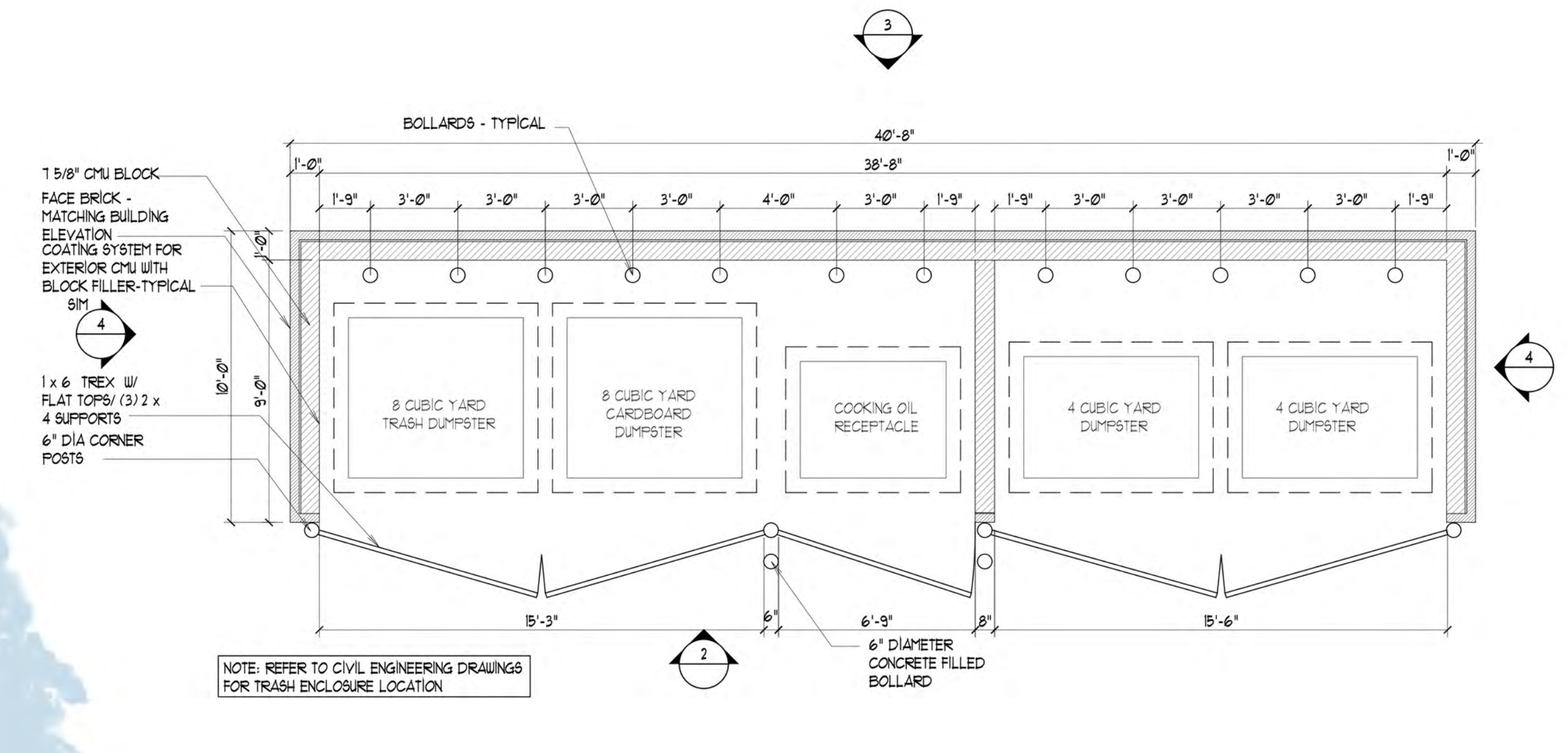


D WEST ELEVATION
SCALE: 1/4" = 1'-0"

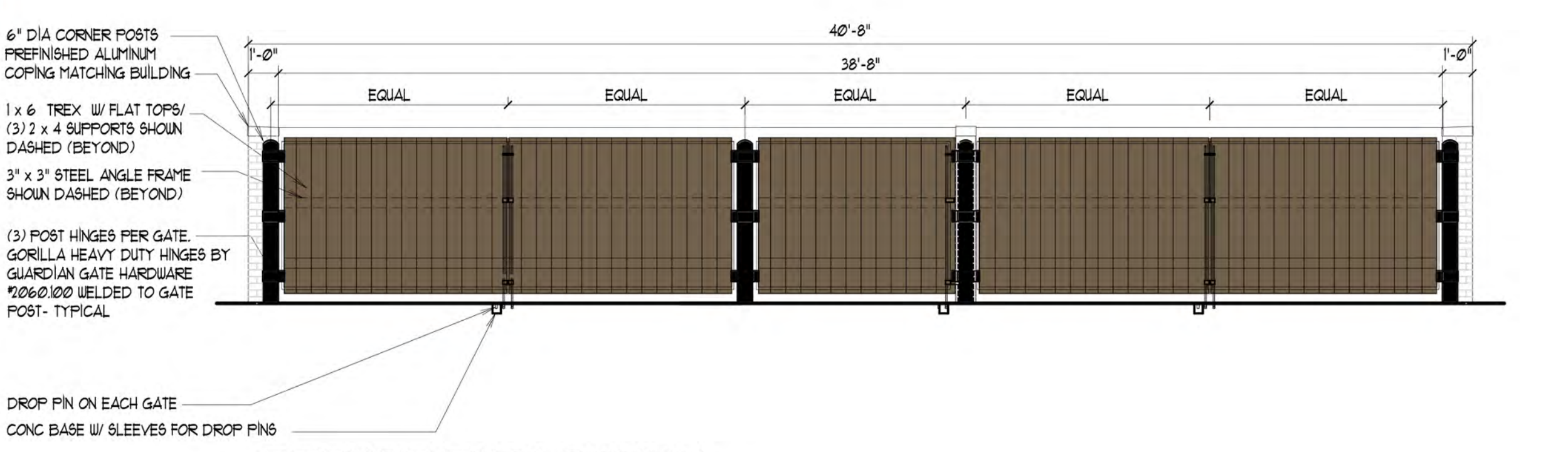
E MONUMENT ELEVATION
SCALE: 1/4" = 1'-0"



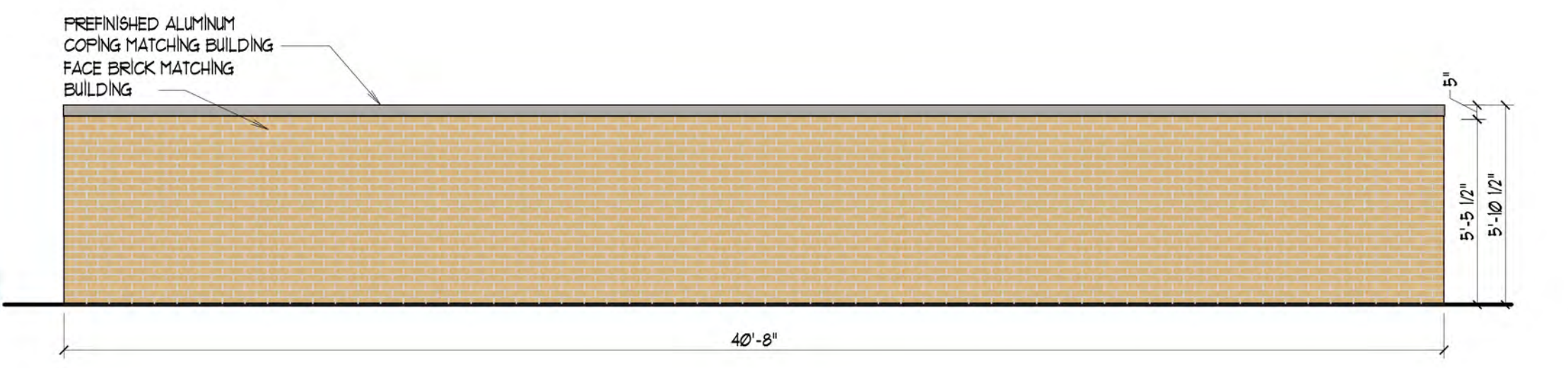
A SOUTH ELEVATION
SCALE: 1/4" = 1'-0"



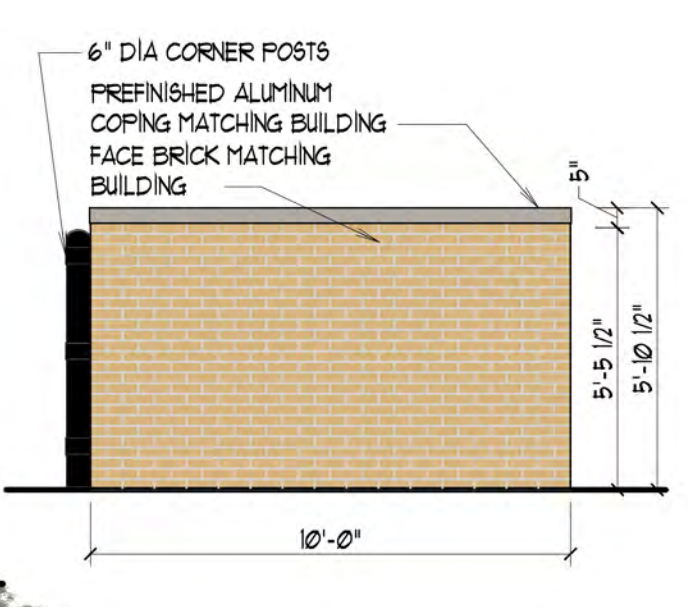
NOTE: REFER TO CIVIL ENGINEERING DRAWINGS FOR TRASH ENCLOSURE LOCATION



2 REFUSE ENCLOSURE GATE ELEVATION
SCALE: 1/4" = 1'-0"



3 REFUSE ENCLOSURE ELEVATION
SCALE: 1/4" = 1'-0"



4 REFUSE ENCLOSURE ELEVATION
SCALE: 1/4" = 1'-0"



B EAST ELEVATION
SCALE: 1/4" = 1'-0"

