

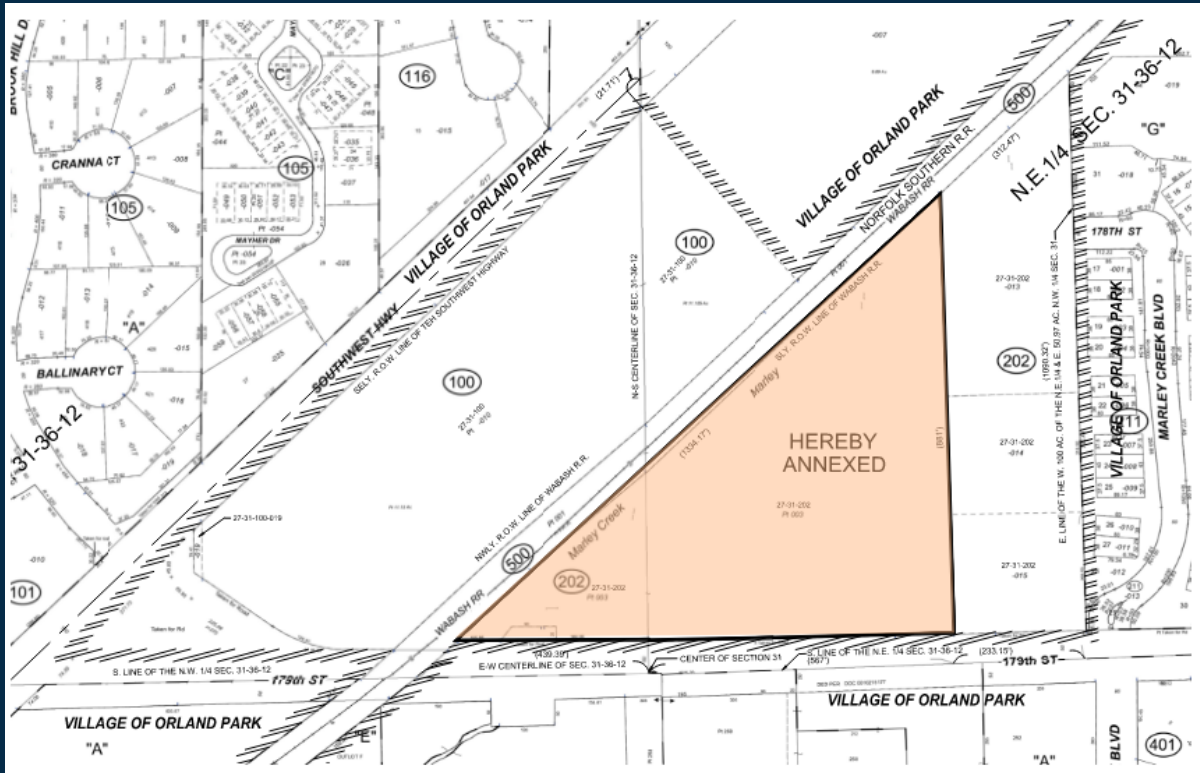


**ORLAND
PARK**

Annexation Agreement

April 6, 2026

**179th and Railroad Tracks
(Melka Landscaping)**



Problematic uses that are Permitted Uses in the Cook County I-1 Restricted Industrial District, include but are not limited to the following:

Industrial Uses including construction yards, machine shops, industrial launderers, packing and crating services, fabrication, processing, assembly of materials, products and goods;

Wholesale and warehouse uses - including automotive storage, beverage distributors, self-storage and mini warehouse facilities, wholesale establishments;

Retail businesses including bars, taverns, cocktail lounges, machinery sales, automotive repair shops.



The key points of the proposed annexation agreement are as follows:

- Village shall extend water and sanitary sewer to service the property. Once Village water and sanitary sewer service is brought to the property line, the existing septic systems are to be removed, and the existing well can only be utilized for irrigation purposes.
- All connection and meter charges are to be paid for by the Owner.
- The Owner shall provide the Village with necessary easements to allow the Village to repair and maintain Marley Creek, in the event the Owner fails to do so.

