



VILLAGE OF ORLAND PARK

Development Services Department

14700 S. Ravinia Avenue

Orland Park, IL 60462

Phone - (708) 403-5300 Fax (708) 403-6215

www.orland-park.il.us

Amusement Device Operator's License

1. Submit fully completed application. Make sure that the games are each listed along with description and serial number. Include rating as per attached AAMA Game Ratings. AAMA Game Ratings will be verified at the following website:
<http://www.coin-op.org/Games%20Rating%20List.htm>
2. Have application notarized.
3. Include check for application fee. Fee is \$50.00 per machine, minimum being \$100.00. (Covers 2 machines)
4. Submit drawing showing location of machines and distance to surrounding objects. Show doorways in room.
5. Application needs to be approved by the Village Board of Trustees. It is highly recommended that someone from your business establishment be present at the Board Meeting to answer questions.

Please read the enclosed copies of the Amusement Device Ordinances, Title 7, Chapter 5 of the Orland Park Village Code. Pay particular notice to ALL restrictions. Sign below to indicate receipt of said code and to acknowledge that you have read it in it's entirety.

Justin Tauber
Justin Tauber

Owner or Agent for Owner

6-15-16
06-15-16

Date

VILLAGE OF ORLAND PARK

14700 RAVINIA AVENUE

ORLAND PARK, IL 60462

Phone (708) 403-5300 Fax (708) 403-6215

APPLICATION FOR AUTOMATIC AMUSEMENT DEVICE OPERATORS LICENSE

Please Note:

Any misrepresentation or falsification of the information sought below may result in revocation of the license as granted. You must be 21 years of age or older and be a U. S Citizen to apply. Any license issued as a result of this application shall terminate next December 31st.

Name of Business Gizmos Fun Factory Business Phone (773) 415-2988

Business Address 66 Orland Sq. Dr. Suite D, Orland Park, IL 60462

Names and Addresses of Principal Owners

Justin Tauber - 1517 Park West Circle, Munster, IN 46321
Kyle Ropac - 1021 Foy Ct., Crown Point, IN 46307

Address of premises where amusement devices are to be operated (if different from business address).

Type of Business Family Entertainment Center

Corporation/Association/Partnership

Joseph Lalich - 12308 Northcote Ct, Saint John, IN 46373

Names and Addresses of Principal Officers or of all Shareholders over 5%.

Justin Tauber - 1517 Park West Circle, Munster, IN 46321
Kyle Ropac - 1021 Foy Ct., Crown Point, IN 46307
VU NGUYEN - 1501 South Lake George Dr., Mishawaka, IN 46545
Michael Lalich - 1501 South Lake George Dr., Mishawaka, IN 46545
Tony Ropac - 8353 Doubletree Drive North, Crown Point, IN 46307

Have any of the above been convicted of gambling, tax evasion, any felony, or been denied a liquor license?

Corporate Purpose Family Entertainment Center → Orland Park FEC LLC

Corporate Recording Number (s) 81-0849923

Registered Agent Douglas B. Wexler 55 W. Wacker Dr., Fl 9

Chicago, IL 60601-1794

	Trade Name of Device/ Serial Number	Manufacturer	Description	Game Rating Code Color
1.				
2.				
3.				
4.				
5.				
6.				
7.				

(Additional information can be added using attached sheet)

Total Fees: \$ _____

Has a liquor license been issued or applied for? If so, when?

NO - Within two weeks

This application is for the machines as listed above. Any changes in the status of those machines will necessitate a new application.

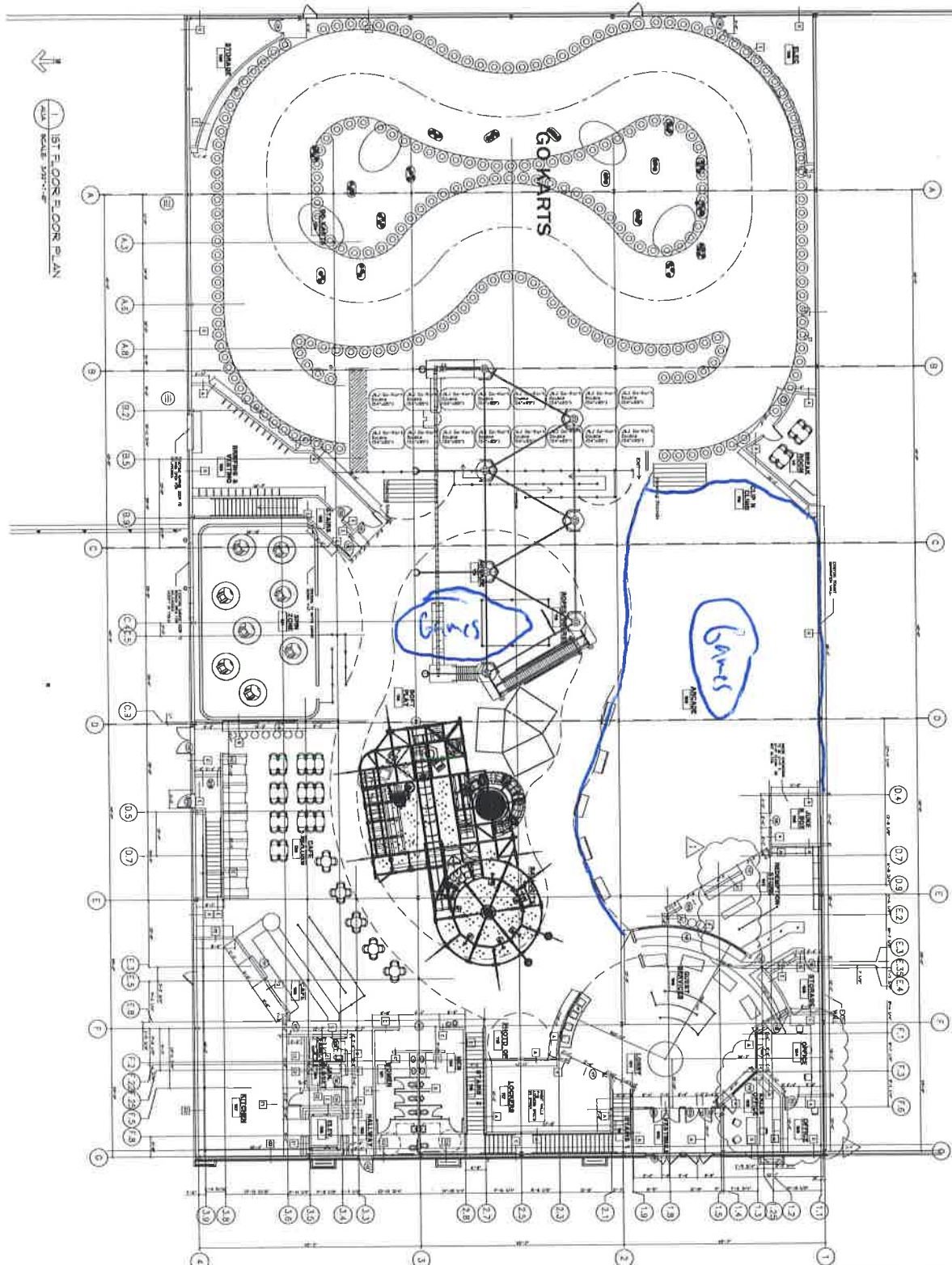
SUBSCRIBED AND SWORN TO

Before me this 16th
Day of June 2016

[Signature]
Notary Public



[Signature]
Owner/Agent for Owner



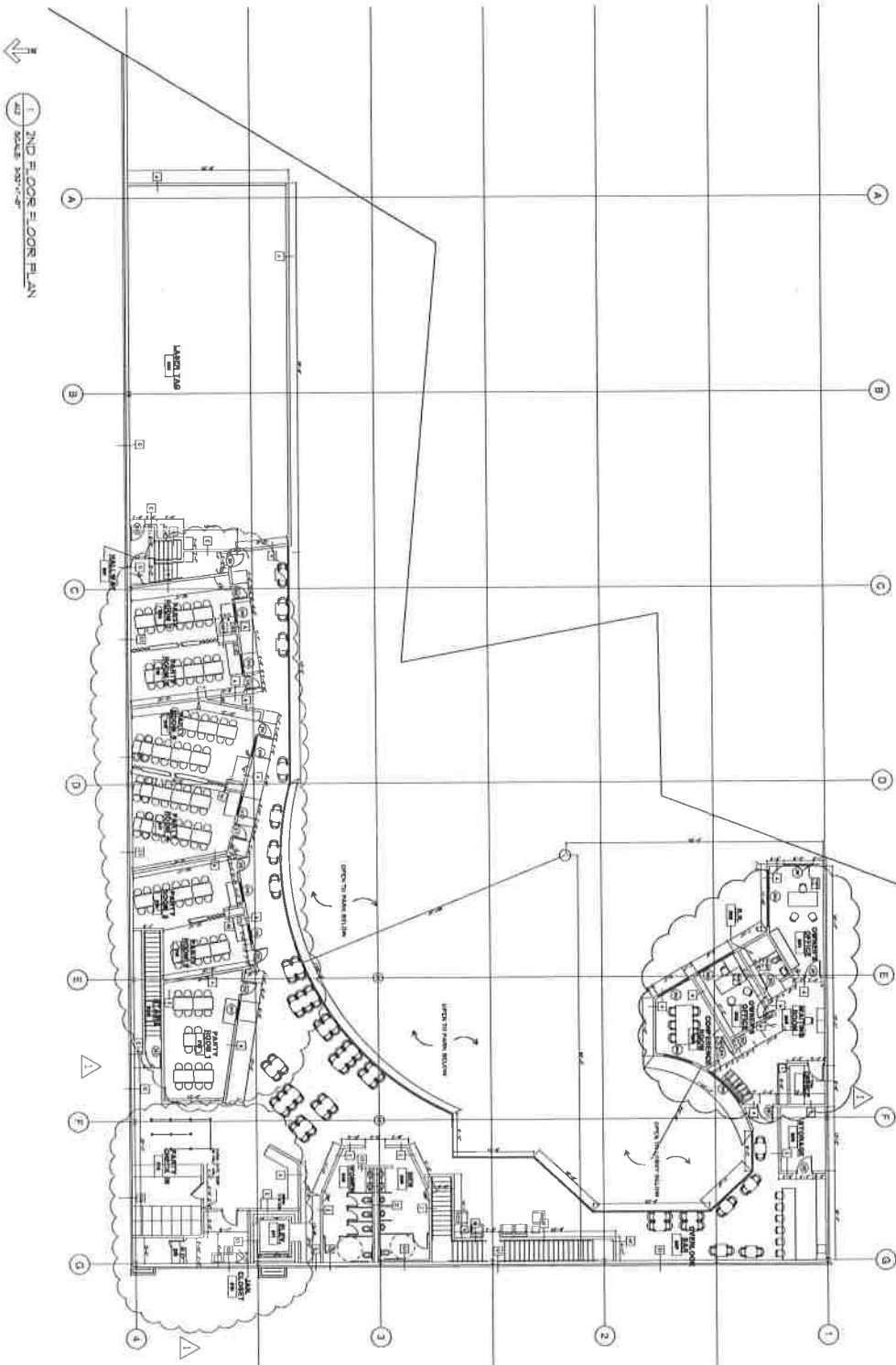
1st Floor Plan
Scale 1/8" = 1'-0"

GENERAL NOTES

1. EXISTING WALLS TO REMAIN IN OPEN
2. PAINT GENERAL AREA, LANTON
3. PAINT FLOOR OPEN OFFICES P-1
4. PAINT 2ND FLOOR OPEN OFFICES P-2
5. PAINT IN STAINLESS STEEL PLANT
6. LOCATIONS TO BE RELOCATED BY OWNER

FLOOR PLAN LEGEND

- 1. DOOR
- 2. WINDOW
- 3. ELEVATION TAG
- 4. BALANCED PLAN TAG
- 5. WINDOW TAG
- 6. DOOR TAG
- 7. WALL TAG
- 8. REVISION TO TAG FOR WALL DETAILS
- 9. REVISION TO TAG FOR WALL DETAILS
- 10. REVISION TO TAG FOR WALL DETAILS
- 11. REVISION TO TAG FOR WALL DETAILS
- 12. REVISION TO TAG FOR WALL DETAILS
- 13. REVISION TO TAG FOR WALL DETAILS
- 14. REVISION TO TAG FOR WALL DETAILS
- 15. REVISION TO TAG FOR WALL DETAILS
- 16. REVISION TO TAG FOR WALL DETAILS
- 17. REVISION TO TAG FOR WALL DETAILS
- 18. REVISION TO TAG FOR WALL DETAILS
- 19. REVISION TO TAG FOR WALL DETAILS
- 20. REVISION TO TAG FOR WALL DETAILS
- 21. REVISION TO TAG FOR WALL DETAILS
- 22. REVISION TO TAG FOR WALL DETAILS
- 23. REVISION TO TAG FOR WALL DETAILS
- 24. REVISION TO TAG FOR WALL DETAILS
- 25. REVISION TO TAG FOR WALL DETAILS
- 26. REVISION TO TAG FOR WALL DETAILS
- 27. REVISION TO TAG FOR WALL DETAILS
- 28. REVISION TO TAG FOR WALL DETAILS
- 29. REVISION TO TAG FOR WALL DETAILS
- 30. REVISION TO TAG FOR WALL DETAILS
- 31. REVISION TO TAG FOR WALL DETAILS
- 32. REVISION TO TAG FOR WALL DETAILS
- 33. REVISION TO TAG FOR WALL DETAILS
- 34. REVISION TO TAG FOR WALL DETAILS
- 35. REVISION TO TAG FOR WALL DETAILS
- 36. REVISION TO TAG FOR WALL DETAILS
- 37. REVISION TO TAG FOR WALL DETAILS
- 38. REVISION TO TAG FOR WALL DETAILS
- 39. REVISION TO TAG FOR WALL DETAILS
- 40. REVISION TO TAG FOR WALL DETAILS
- 41. REVISION TO TAG FOR WALL DETAILS
- 42. REVISION TO TAG FOR WALL DETAILS
- 43. REVISION TO TAG FOR WALL DETAILS
- 44. REVISION TO TAG FOR WALL DETAILS
- 45. REVISION TO TAG FOR WALL DETAILS
- 46. REVISION TO TAG FOR WALL DETAILS
- 47. REVISION TO TAG FOR WALL DETAILS
- 48. REVISION TO TAG FOR WALL DETAILS
- 49. REVISION TO TAG FOR WALL DETAILS
- 50. REVISION TO TAG FOR WALL DETAILS
- 51. REVISION TO TAG FOR WALL DETAILS
- 52. REVISION TO TAG FOR WALL DETAILS
- 53. REVISION TO TAG FOR WALL DETAILS
- 54. REVISION TO TAG FOR WALL DETAILS
- 55. REVISION TO TAG FOR WALL DETAILS
- 56. REVISION TO TAG FOR WALL DETAILS
- 57. REVISION TO TAG FOR WALL DETAILS
- 58. REVISION TO TAG FOR WALL DETAILS
- 59. REVISION TO TAG FOR WALL DETAILS
- 60. REVISION TO TAG FOR WALL DETAILS
- 61. REVISION TO TAG FOR WALL DETAILS
- 62. REVISION TO TAG FOR WALL DETAILS
- 63. REVISION TO TAG FOR WALL DETAILS
- 64. REVISION TO TAG FOR WALL DETAILS
- 65. REVISION TO TAG FOR WALL DETAILS
- 66. REVISION TO TAG FOR WALL DETAILS
- 67. REVISION TO TAG FOR WALL DETAILS
- 68. REVISION TO TAG FOR WALL DETAILS
- 69. REVISION TO TAG FOR WALL DETAILS
- 70. REVISION TO TAG FOR WALL DETAILS
- 71. REVISION TO TAG FOR WALL DETAILS
- 72. REVISION TO TAG FOR WALL DETAILS
- 73. REVISION TO TAG FOR WALL DETAILS
- 74. REVISION TO TAG FOR WALL DETAILS
- 75. REVISION TO TAG FOR WALL DETAILS
- 76. REVISION TO TAG FOR WALL DETAILS
- 77. REVISION TO TAG FOR WALL DETAILS
- 78. REVISION TO TAG FOR WALL DETAILS
- 79. REVISION TO TAG FOR WALL DETAILS
- 80. REVISION TO TAG FOR WALL DETAILS
- 81. REVISION TO TAG FOR WALL DETAILS
- 82. REVISION TO TAG FOR WALL DETAILS
- 83. REVISION TO TAG FOR WALL DETAILS
- 84. REVISION TO TAG FOR WALL DETAILS
- 85. REVISION TO TAG FOR WALL DETAILS
- 86. REVISION TO TAG FOR WALL DETAILS
- 87. REVISION TO TAG FOR WALL DETAILS
- 88. REVISION TO TAG FOR WALL DETAILS
- 89. REVISION TO TAG FOR WALL DETAILS
- 90. REVISION TO TAG FOR WALL DETAILS
- 91. REVISION TO TAG FOR WALL DETAILS
- 92. REVISION TO TAG FOR WALL DETAILS
- 93. REVISION TO TAG FOR WALL DETAILS
- 94. REVISION TO TAG FOR WALL DETAILS
- 95. REVISION TO TAG FOR WALL DETAILS
- 96. REVISION TO TAG FOR WALL DETAILS
- 97. REVISION TO TAG FOR WALL DETAILS
- 98. REVISION TO TAG FOR WALL DETAILS
- 99. REVISION TO TAG FOR WALL DETAILS
- 100. REVISION TO TAG FOR WALL DETAILS



1
2
3
4
5
6
7
8
9
10
11
12
13
14
15
16
17
18
19
20
21
22
23
24
25
26
27
28
29
30
31
32
33
34
35
36
37
38
39
40
41
42
43
44
45
46
47
48
49
50
51
52
53
54
55
56
57
58
59
60
61
62
63
64
65
66
67
68
69
70
71
72
73
74
75
76
77
78
79
80
81
82
83
84
85
86
87
88
89
90
91
92
93
94
95
96
97
98
99
100

GENERAL NOTES

1. PAINT INTERIOR COATING IS OPEN
2. PAINT EXTERIOR COATING IS OPEN
3. PAINT EXTERIOR COATING IS OPEN
4. PAINT EXTERIOR COATING IS OPEN
5. PAINT EXTERIOR COATING IS OPEN
6. PAINT EXTERIOR COATING IS OPEN
7. PAINT EXTERIOR COATING IS OPEN
8. PAINT EXTERIOR COATING IS OPEN
9. PAINT EXTERIOR COATING IS OPEN
10. PAINT EXTERIOR COATING IS OPEN
11. PAINT EXTERIOR COATING IS OPEN
12. PAINT EXTERIOR COATING IS OPEN
13. PAINT EXTERIOR COATING IS OPEN
14. PAINT EXTERIOR COATING IS OPEN
15. PAINT EXTERIOR COATING IS OPEN
16. PAINT EXTERIOR COATING IS OPEN
17. PAINT EXTERIOR COATING IS OPEN
18. PAINT EXTERIOR COATING IS OPEN
19. PAINT EXTERIOR COATING IS OPEN
20. PAINT EXTERIOR COATING IS OPEN
21. PAINT EXTERIOR COATING IS OPEN
22. PAINT EXTERIOR COATING IS OPEN
23. PAINT EXTERIOR COATING IS OPEN
24. PAINT EXTERIOR COATING IS OPEN
25. PAINT EXTERIOR COATING IS OPEN
26. PAINT EXTERIOR COATING IS OPEN
27. PAINT EXTERIOR COATING IS OPEN
28. PAINT EXTERIOR COATING IS OPEN
29. PAINT EXTERIOR COATING IS OPEN
30. PAINT EXTERIOR COATING IS OPEN
31. PAINT EXTERIOR COATING IS OPEN
32. PAINT EXTERIOR COATING IS OPEN
33. PAINT EXTERIOR COATING IS OPEN
34. PAINT EXTERIOR COATING IS OPEN
35. PAINT EXTERIOR COATING IS OPEN
36. PAINT EXTERIOR COATING IS OPEN
37. PAINT EXTERIOR COATING IS OPEN
38. PAINT EXTERIOR COATING IS OPEN
39. PAINT EXTERIOR COATING IS OPEN
40. PAINT EXTERIOR COATING IS OPEN
41. PAINT EXTERIOR COATING IS OPEN
42. PAINT EXTERIOR COATING IS OPEN
43. PAINT EXTERIOR COATING IS OPEN
44. PAINT EXTERIOR COATING IS OPEN
45. PAINT EXTERIOR COATING IS OPEN
46. PAINT EXTERIOR COATING IS OPEN
47. PAINT EXTERIOR COATING IS OPEN
48. PAINT EXTERIOR COATING IS OPEN
49. PAINT EXTERIOR COATING IS OPEN
50. PAINT EXTERIOR COATING IS OPEN
51. PAINT EXTERIOR COATING IS OPEN
52. PAINT EXTERIOR COATING IS OPEN
53. PAINT EXTERIOR COATING IS OPEN
54. PAINT EXTERIOR COATING IS OPEN
55. PAINT EXTERIOR COATING IS OPEN
56. PAINT EXTERIOR COATING IS OPEN
57. PAINT EXTERIOR COATING IS OPEN
58. PAINT EXTERIOR COATING IS OPEN
59. PAINT EXTERIOR COATING IS OPEN
60. PAINT EXTERIOR COATING IS OPEN
61. PAINT EXTERIOR COATING IS OPEN
62. PAINT EXTERIOR COATING IS OPEN
63. PAINT EXTERIOR COATING IS OPEN
64. PAINT EXTERIOR COATING IS OPEN
65. PAINT EXTERIOR COATING IS OPEN
66. PAINT EXTERIOR COATING IS OPEN
67. PAINT EXTERIOR COATING IS OPEN
68. PAINT EXTERIOR COATING IS OPEN
69. PAINT EXTERIOR COATING IS OPEN
70. PAINT EXTERIOR COATING IS OPEN
71. PAINT EXTERIOR COATING IS OPEN
72. PAINT EXTERIOR COATING IS OPEN
73. PAINT EXTERIOR COATING IS OPEN
74. PAINT EXTERIOR COATING IS OPEN
75. PAINT EXTERIOR COATING IS OPEN
76. PAINT EXTERIOR COATING IS OPEN
77. PAINT EXTERIOR COATING IS OPEN
78. PAINT EXTERIOR COATING IS OPEN
79. PAINT EXTERIOR COATING IS OPEN
80. PAINT EXTERIOR COATING IS OPEN
81. PAINT EXTERIOR COATING IS OPEN
82. PAINT EXTERIOR COATING IS OPEN
83. PAINT EXTERIOR COATING IS OPEN
84. PAINT EXTERIOR COATING IS OPEN
85. PAINT EXTERIOR COATING IS OPEN
86. PAINT EXTERIOR COATING IS OPEN
87. PAINT EXTERIOR COATING IS OPEN
88. PAINT EXTERIOR COATING IS OPEN
89. PAINT EXTERIOR COATING IS OPEN
90. PAINT EXTERIOR COATING IS OPEN
91. PAINT EXTERIOR COATING IS OPEN
92. PAINT EXTERIOR COATING IS OPEN
93. PAINT EXTERIOR COATING IS OPEN
94. PAINT EXTERIOR COATING IS OPEN
95. PAINT EXTERIOR COATING IS OPEN
96. PAINT EXTERIOR COATING IS OPEN
97. PAINT EXTERIOR COATING IS OPEN
98. PAINT EXTERIOR COATING IS OPEN
99. PAINT EXTERIOR COATING IS OPEN
100. PAINT EXTERIOR COATING IS OPEN

FLOOR PLAN LEGEND

- 1. DOOR
- 2. WALL
- 3. WINDOW
- 4. ELEVATION TAG
- 5. FINISHED FLOOR TAG
- 6. FINISHED FLOOR TAG
- 7. FINISHED FLOOR TAG
- 8. FINISHED FLOOR TAG
- 9. FINISHED FLOOR TAG
- 10. FINISHED FLOOR TAG
- 11. FINISHED FLOOR TAG
- 12. FINISHED FLOOR TAG
- 13. FINISHED FLOOR TAG
- 14. FINISHED FLOOR TAG
- 15. FINISHED FLOOR TAG
- 16. FINISHED FLOOR TAG
- 17. FINISHED FLOOR TAG
- 18. FINISHED FLOOR TAG
- 19. FINISHED FLOOR TAG
- 20. FINISHED FLOOR TAG
- 21. FINISHED FLOOR TAG
- 22. FINISHED FLOOR TAG
- 23. FINISHED FLOOR TAG
- 24. FINISHED FLOOR TAG
- 25. FINISHED FLOOR TAG
- 26. FINISHED FLOOR TAG
- 27. FINISHED FLOOR TAG
- 28. FINISHED FLOOR TAG
- 29. FINISHED FLOOR TAG
- 30. FINISHED FLOOR TAG
- 31. FINISHED FLOOR TAG
- 32. FINISHED FLOOR TAG
- 33. FINISHED FLOOR TAG
- 34. FINISHED FLOOR TAG
- 35. FINISHED FLOOR TAG
- 36. FINISHED FLOOR TAG
- 37. FINISHED FLOOR TAG
- 38. FINISHED FLOOR TAG
- 39. FINISHED FLOOR TAG
- 40. FINISHED FLOOR TAG
- 41. FINISHED FLOOR TAG
- 42. FINISHED FLOOR TAG
- 43. FINISHED FLOOR TAG
- 44. FINISHED FLOOR TAG
- 45. FINISHED FLOOR TAG
- 46. FINISHED FLOOR TAG
- 47. FINISHED FLOOR TAG
- 48. FINISHED FLOOR TAG
- 49. FINISHED FLOOR TAG
- 50. FINISHED FLOOR TAG
- 51. FINISHED FLOOR TAG
- 52. FINISHED FLOOR TAG
- 53. FINISHED FLOOR TAG
- 54. FINISHED FLOOR TAG
- 55. FINISHED FLOOR TAG
- 56. FINISHED FLOOR TAG
- 57. FINISHED FLOOR TAG
- 58. FINISHED FLOOR TAG
- 59. FINISHED FLOOR TAG
- 60. FINISHED FLOOR TAG
- 61. FINISHED FLOOR TAG
- 62. FINISHED FLOOR TAG
- 63. FINISHED FLOOR TAG
- 64. FINISHED FLOOR TAG
- 65. FINISHED FLOOR TAG
- 66. FINISHED FLOOR TAG
- 67. FINISHED FLOOR TAG
- 68. FINISHED FLOOR TAG
- 69. FINISHED FLOOR TAG
- 70. FINISHED FLOOR TAG
- 71. FINISHED FLOOR TAG
- 72. FINISHED FLOOR TAG
- 73. FINISHED FLOOR TAG
- 74. FINISHED FLOOR TAG
- 75. FINISHED FLOOR TAG
- 76. FINISHED FLOOR TAG
- 77. FINISHED FLOOR TAG
- 78. FINISHED FLOOR TAG
- 79. FINISHED FLOOR TAG
- 80. FINISHED FLOOR TAG
- 81. FINISHED FLOOR TAG
- 82. FINISHED FLOOR TAG
- 83. FINISHED FLOOR TAG
- 84. FINISHED FLOOR TAG
- 85. FINISHED FLOOR TAG
- 86. FINISHED FLOOR TAG
- 87. FINISHED FLOOR TAG
- 88. FINISHED FLOOR TAG
- 89. FINISHED FLOOR TAG
- 90. FINISHED FLOOR TAG
- 91. FINISHED FLOOR TAG
- 92. FINISHED FLOOR TAG
- 93. FINISHED FLOOR TAG
- 94. FINISHED FLOOR TAG
- 95. FINISHED FLOOR TAG
- 96. FINISHED FLOOR TAG
- 97. FINISHED FLOOR TAG
- 98. FINISHED FLOOR TAG
- 99. FINISHED FLOOR TAG
- 100. FINISHED FLOOR TAG

MANUFACTURER	GAME DESCRIPTION	Game Rating	# of Swipers
Adrenaline Amusements	Crossy Road	Green	2
Adrenaline Amusements	Flying Tickets	Green	2
Adrenaline Amusements	Fruit Ninja - 2 TFX 1 Screen	Green	1
Andamiro	Spongebob Pineapple Arcade	Green	2
Bay tek	Big Bass Wheel	Green	3
Bay tek	Dizzy Chicken	Green	1
Bay tek	Full Tilt	Green	1
Bay tek	Grand Piano Keys	Green	2
Bay tek	Sink It Shootout (2Games+Sign)	Green	2
Benchmark	Chaos	Green	1
Benchmark	Monster Drop Xtreme	Green	2
Bob's Space Racers	Gear It Up w/Player Seat	Green	1
Coastal Amusements	Black Hole	Green	1
Coastal Amusements	Simpson Soccer	Green	1
Elaut	Tower of Tickets	Green	4
Elaut	Wizard of Oz 6 Player	Green	6
Innovative Concepts	Angry Birds	Green	1
Innovative Concepts	Down The Clown	Green	2
Innovative Concepts	Gold Fishin'	Green	1
Innovative Concepts	Ice Ball FX	Green	3
Innovative Concepts	Kung Fu Panda (Dojo Mojo Dlx)	Green	1
Innovative Concepts	Milk Jug Toss	Green	1
Innovative Concepts	NBA Hoops	Green	4
Innovative Concepts	Treasure Quest	Green	1
Innovative Concepts	Whack N Win 11.2	Green	1
Jennison	Ocean Pearls	Green	1
Namco	Goal Line Rush	Green	1
Namco	Jumpin Jackpot	Green	1
Skeeball	Giant Spin N Win - 6' w/Led	Green	1
Skeeball	Hot Shot Basketball (Giant)	Green	1
Team Play	Fish Bowl Frenzy	Green	1
Universal Space	Pirates Hook 4 Plyr	Green	4
Dynamo/Valley	Fire Storm 8' A/H w/O/H sound & rope lighting	Green	1
Kalkomat	Boxer Glove (Plain Color, Coin Mech no DBA)	Green	1
Namco	Alpine Racer	Green	1
Namco	Star Wars - Flat Screen Edition	Green	1
Raw Thrills	Aliens Armageddon 55" DX	Yellow	1
Raw Thrills	Batman 42" DX	Green	1
Raw Thrills	Buck Offline HD Wild Panorama	Yellow	1
Raw Thrills	Jurassic Park Environmental	Yellow	1
Raw Thrills	Moto GP	Green	2
Raw Thrills	Super Cars 42" Dlx	Green	2
Triotech	Typhoon Sitdown	Green	1
Apple	Photo Studio Deluxe	Green	1
Elaut	Big One Extreme	Green	1
Elaut	E Claw 900 1 Pl Crane	Green	4
Elaut	Plucky Ducky	Green	1
LAI	Color Match	Green	1

MANUFACTURER	GAME DESCRIPTION	Game Rating	# of Swipers
SEGA	Prize Locker skill merchandiser	Green	2
Smart	Candy House	Green	1
Bay tek	Big Bass Jackpot Marquee	N/A	0
Innovative Concepts	Down The Clown Marquee	N/A	0
Innovative Concepts	Ice Ball FX Marquee	N/A	0
Innovative Concepts	NBA Hoops LED Kit	N/A	0
Innovative Concepts	NBA Hoops Link Kit (Each Unit !!!)	N/A	0
Innovative Concepts	NBA Hoops Progressive Sign	N/A	0
Raw Thrills	BB Wild 3yr + Zombie + DD Kit	Yellow	0
Raw Thrills	BBHD 80" Monitor Stand	N/A	0
Triotech	Typhoon 10 Ride Update	Green	0