



**ORLAND  
PARK**

# **PW Project Update**

**Joel Van Essen  
Public Works Director**

# PW Project Update

## Reduction of Scope

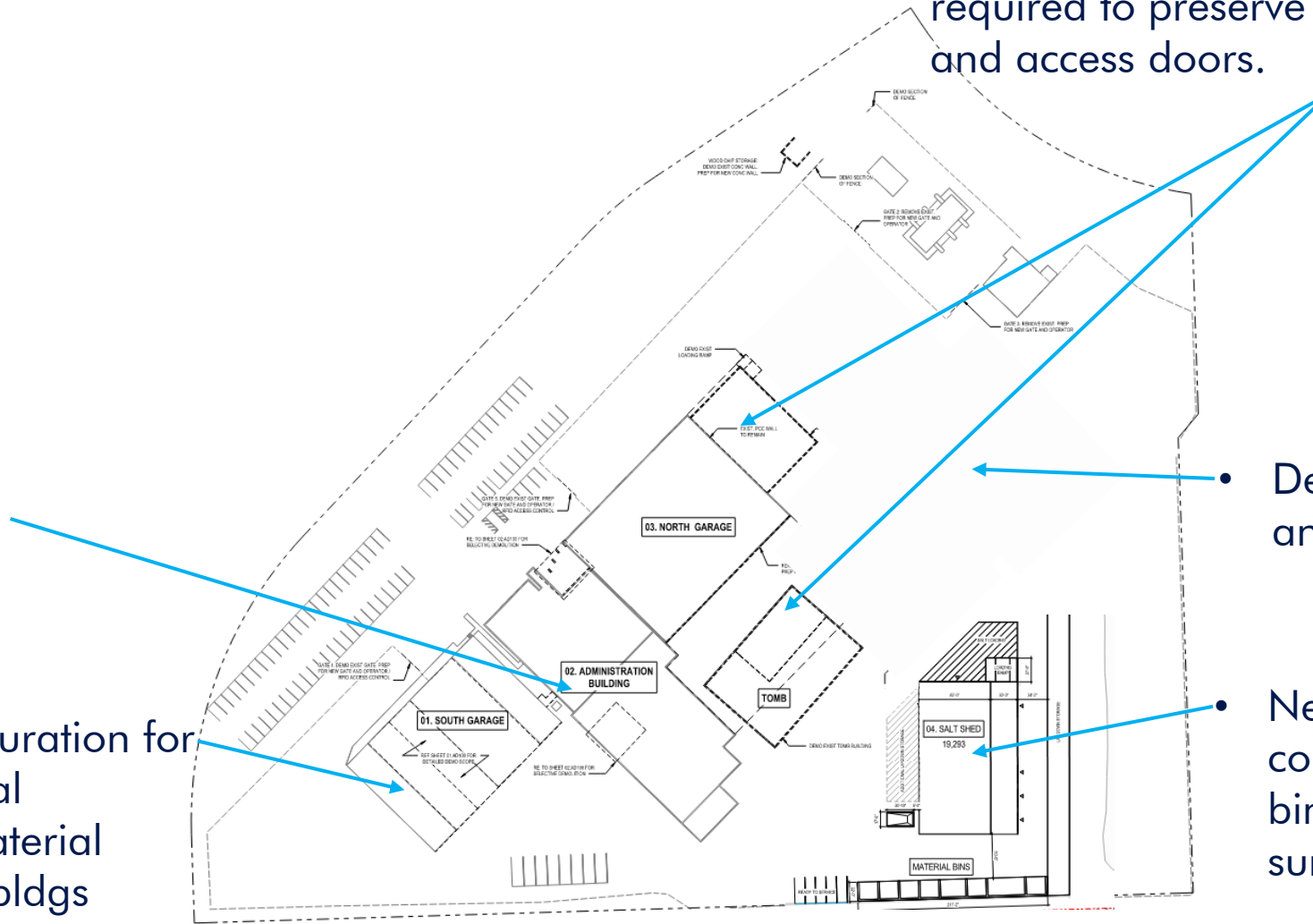
- PW Project has been bid on three separate occasions. While the first two didn't receive proposals; the last RFP proposals received, exceeded our budget figure.
- The project scope is being reduced to below budget figure while addressing the Village's near-term critical operation and facility improvements to support PW's functions and needs.
- Execute change order with A/E for \$239,910
  - A/E coordinated and managed several supplemental services that were necessary to advance the project, including IDOT bidding updates, geotechnical investigations and soil borings, and supplemental structural engineering calculations as part of change order
  - Updated drawings
  - New estimate required
  - Revised MWRD permit

# PW Project

## Remaining Scope

- Keep storage space in old army building and old salt storage. Some cleaning/painting required to preserve old salt area roof joists and access doors.

- Bathroom/locker room renovation
- 3<sup>rd</sup> south bay configuration for Facilities and Natural Resources shops/material storage from other bldgs



• Demo of old range and old storage bins

• New salt storage/brine construction and storage bins and paving surrounding the area

A3 | SITE DEMOLITION PLAN

# PW Project Update

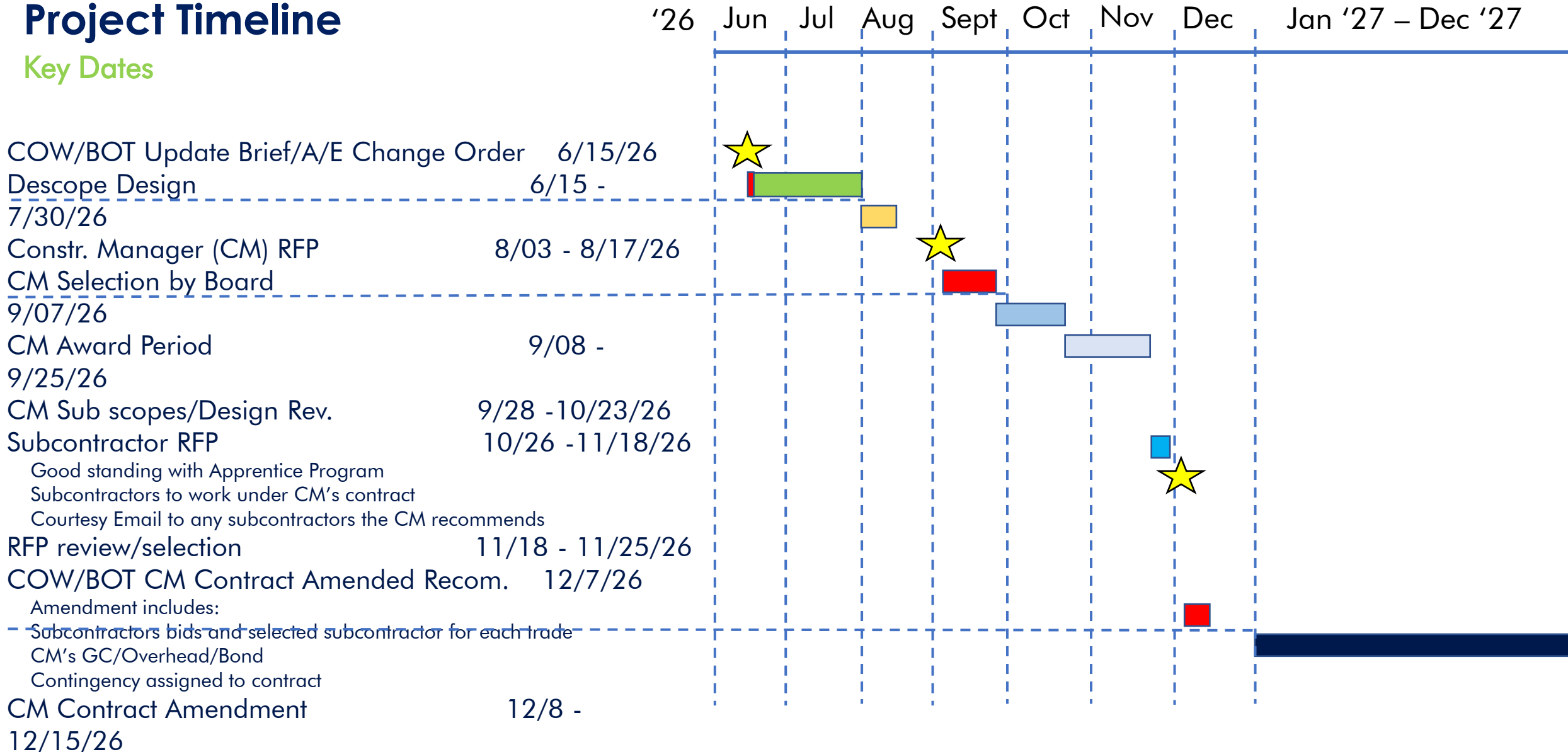
## Funding

	<u>FY26</u>	<u>FY27</u>
• A/E Change Order	\$239,910	
• Bonds: Construction		\$14M
• Contingency		\$1M
• Construction Oversight		\$445K
• Other Owner Costs*		\$175K
• Note: \$5M Road Program will be funded by Motor Fuel Tax (MFT) in FY27 to provide relief for general fund		

\* Includes reassemble brine equipment, construction testing, modular concrete blocks

# Project Timeline

## Key Dates



# Questions

# PW Project Needs Assessment

## Project Needs Remain

- The Facility Space Utilization and Condition Assessment in 2021 shaped the framework for the project at PW and was added to the 2023 Capital Improvements Plan.
- **Maximize undeveloped area in back** for salt/brine facility and move laydown materials to the back of PW.
- **Improve salt storage** with wood structure, increase salt storage capacity and maintain brine operations to protect environment.
- **Consolidate storage** to PW site instead of it spread throughout the Village's facilities.
  - Move out of Rec Admin/Old Village Hall and maximize space for EMA and Recreation and Parks storage and programs and convert 3<sup>rd</sup> bay of south garage
- **Improve restroom and locker area** due to consolidation of natural resources and facilities into PW.
- **Protect vehicles and equipment** from environmental degradation and vehicle life reduction, increase in cost, and severe weather like hail damage. Utilize old army building space and old salt building.

# PW Optimization Site

## Site Plan

