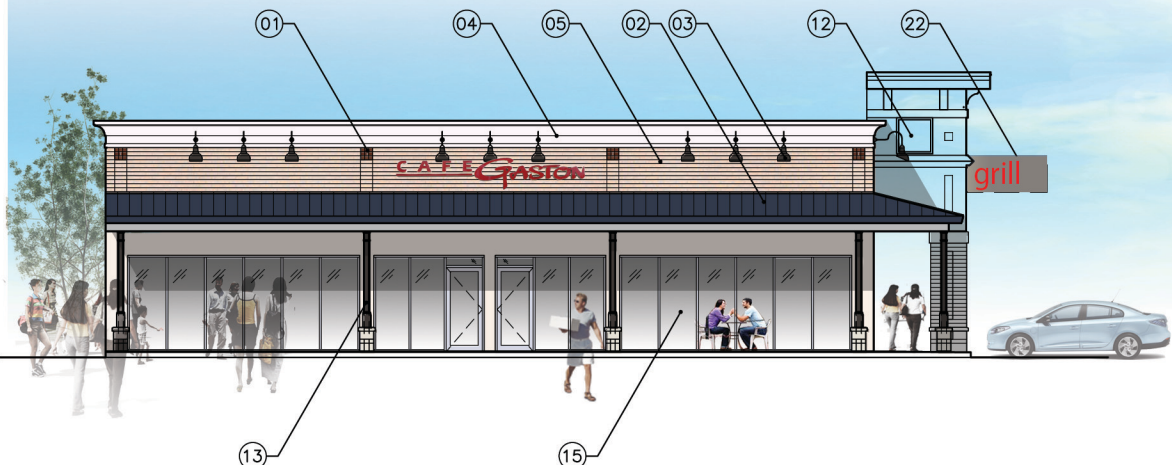


SOUTH (B)



EAST (A)

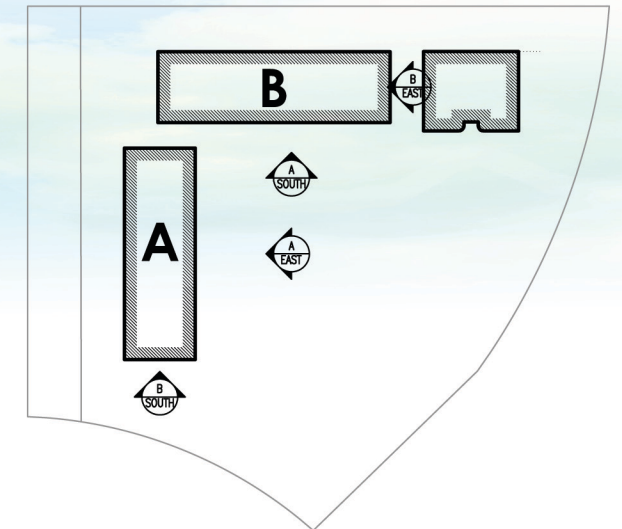
EAST (B)



SOUTH (A)

MATERIALS LEGEND

- | | |
|--------------------------------|--|
| 01 BRICK SOLDIER COURSE ACCENT | 13 MANUFACTURED COLUMN ENCLOSURE |
| 02 STANDING SEAM METAL ROOF | 14 NEW PAINT FOR EXISTING INSULCRETE AT STOREFRONT |
| 03 GOOSENECK LIGHT FIXTURE | 15 EXISTING STOREFRONT TO REMAIN |
| 04 CORNICE TYPE 1 | 16 E.I.F.S. "PICTURE FRAME" INSET FOR SIGN BAND |
| 05 THIN BRICK SIGN BAND | 17 RENAISSANCE STONE BASE |
| 06 CORNICE TYPE 2 | 18 BRICK PIER |
| 07 CORNICE TYPE 3 | 19 E.I.F.S. |
| 08 E.I.F.S. SUPPORT BRACKET | 20 12 IN. H. STONE CAP |
| 09 E.I.F.S. FIELD | 21 4 IN. H. STONE CAP |
| 10 E.I.F.S. RELIEF BAND | 22 NEW FREE STANDING SIGN BAND FOR BAR & GRILL |
| 11 E.I.F.S. PILASTER | 23 E.I.F.S. FASCIA FOR SHED ROOF |
| 12 GLAZING | |



Retail Building A & B - ELEVATIONS

Horton Center Facade Renovation

14400 John Humphrey Dr, Orland Park, IL 60462

December 9, 2013 - Design Development Elevation Renderings



SCALE: 1/16" = 1'-0" (© 11" X 17")

JOB NO: 1307-01