

CHANNEL LETTER SIGN SPECIFICATIONS : (Face Lighting, Raceway Mounted, Internal LED Lighting)

Channel Letters : Standard face lighting (plexi face design, fabricated aluminum pan letters, .090" backs, returns 5" x .063", welded construction, sealed seams, drain holes).

Finish : Letter exteriors primed and painted "Red".

Letter Faces : 3/16" Red translucent acrylic (#2793) finished with 1" (Red) Jovelle trimcap.

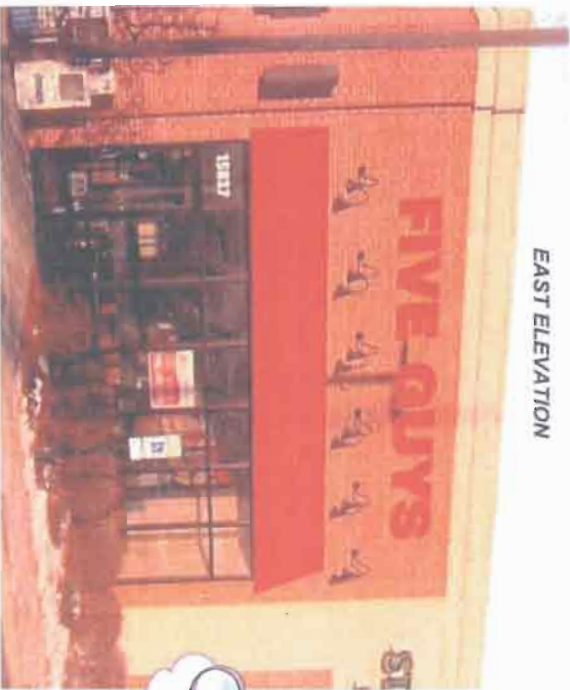
Raceway : Standard 8" tall x 8" deep, riveted aluminum, .063" skin, internal mounting brackets.

Raceway Finish : Raceway to be primed and painted to match building exterior (**T90**).

Illumination : Lettering to be lit internally using "Red" LED modules.

Electrical : 120 volts, UL Listed & Labelled, LED power supplies housed inside raceway.

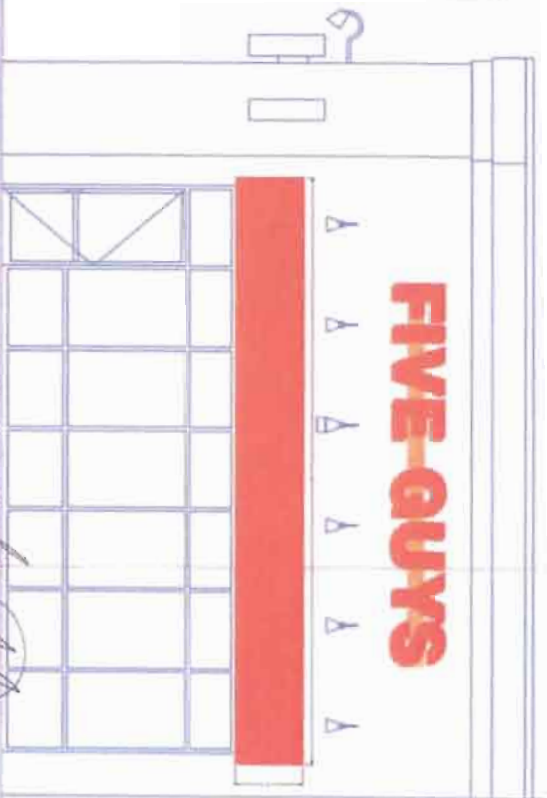
EAST ELEVATION



AWNING: Non illuminated vinyl awning, fabricated all aluminum tube frame.



VOLTAGE
 120 Volts
 277 Volts



1818 S. STATE ST. #1000 CHICAGO, IL 60616
 312.588.8888
 1811 Venture Drive, Suite 1, Joliet, IL 61781
 815.725.1111

CLIENT: Five Guys
 SALESMAN: Matt Shied
 ARTIST: Cory
 DATE: 01/08/09
 CUSTOMERS SIGNATURE: [Signature]
 DRAWING: 03776-01 | 1 of 1

ms

CHANNEL LETTER SIGN SPECIFICATIONS :
(Face Lighting, Raceway Mounted, Internal LED Lighting)

Channel Letters : Standard face lighting plexi face design, fabricated aluminum pan letters, .090" backs, returns 5" x .063" welded construction, sealed seams, drain holes.

Finish : Letter exterior primed and painted "Red".

Letter Faces : 3/16" Red translucent acrylic (#2793) finished with 1" (Red) Jewelle trimcap.

Raceway : Standard 8" tall x 8" deep, frosted aluminum, .063" skin, internal mounting brackets.

Raceway Finish : Raceway to be primed and painted to match building exterior (**TBD**).

Illumination : Lettering to be lit internally using "Red" LED modules.

Electrical : 120 volts, UL Listed & Labeled, LED power supplies housed inside raceway.

WEST ELEVATION

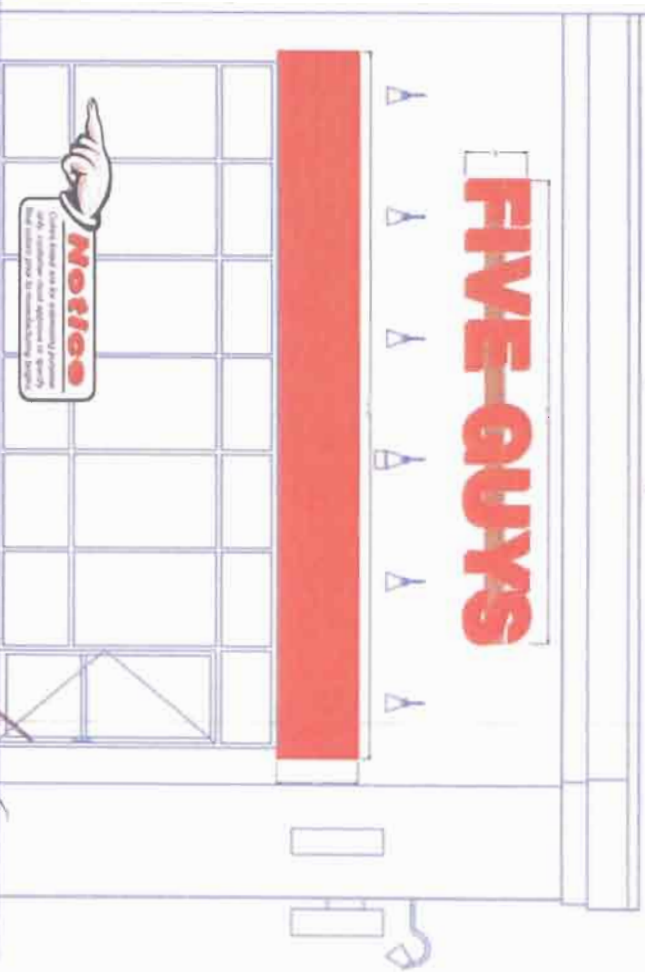


VOLTAGE
 120 Volts
 277 Volts

Survey Needed
 Customer request for exterior lettering requires a survey to be completed prior to production.



AWNING: Non illuminated vinyl awning, fabricated all aluminum frame



TMB Signs

© Copyright

120 Volts
277 Volts

1931 Venture Drive, Suite 1, Jenneville, WI 53546 Phone: 1-800-843-7997 Fax: 1-208-734-7807

CLIENT: Five Guys SALESMAN: Matt Stried ARTIST: Cory

JOB SITE: 18925 S. LaGrange Rd, Orland Park, IL

CUSTOMERS SIGNATURE: *[Signature]* DATE: *[Date]*

DRAWING: 03776-02 1 of 1

Handwritten initials/signature

NON ILLUMINATED VINYL AWNING SPECIFICATIONS:

Fabricated, all aluminum tube frame construction, non illuminated vinyl covered awning. Exact color to be determined. Mounted to wall above windows. Awning to project 18" out from face of wall.



© Listed
Copyright

JNB SIGNS INCORPORATED 1871 Vendue Drive, Suite 1, Jenesville, WI 53546
Phone: 1-800-943-7997 Fax: 1-608-756-7805

CLIENT Five Guys
JOB SITE 19829 S. Ludgrange Rd, Orland Park, IL

SALESMAN Matt Stried

ARTIST Cory

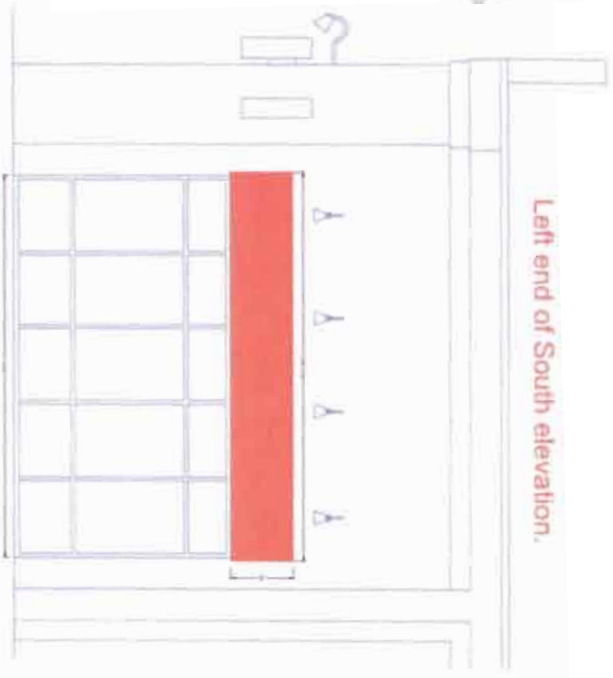
CUSTOMERS SIGNATURE
DATE 01/08/09

DRAWING DATE 03/7/6-03

Handwritten initials: JNS

NON ILLUMINATED VINYL AWNING SPECIFICATIONS:

Fabricated, all aluminum tube frame construction, non illuminated vinyl covered awning. Exact color to be determined. Mounted to wall above windows. Awning to project 18" out from face of wall.



TNB Signs

© Copyright

Listed

1818 SIGNET INCORPORATED 1921 Venture Drive, Suite 1, Joplin, MO 64506 Phone: 1-800-943-7997 Fax: 1-408-754-7800

CLIENT Five Guys SALESMAN Matt Stried ARTIST Cory DATE 01/23/09 DRAWING 03776-04 1 of 1

CUSTOMERS SIGNATURE *[Signature]* DATE

SMd

RACEWAY CHANNEL LETTER SPECIFICATIONS :



Channel Letters : Standard Race lighting pleat face design, fabricated aluminum pan letters, .090" backs, returns 5" x .063", welded construction, sealed seams, drain holes.

Finish : Letter interiors painted with reflective light enhancing paint, exteriors primed and painted "Red".

Letter Faces : 3/16" "Red" translucent acrylic (#Z793) finished with 1" (Red) Jewelle trimcap.

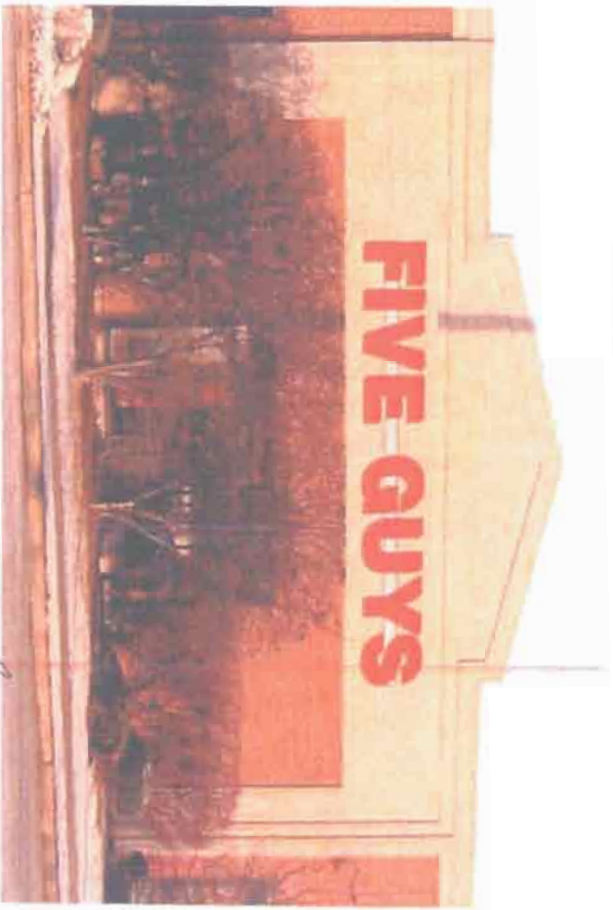
Raceway : Standard 8" tall x 8" deep, riveted aluminum, .063" skin, internal mounting brackets.

Raceway Finish : Exterior primed and painted to match building exterior using Matthews Acrylic Polyurethane. Exact color to be determined.

Illumination : Lettering to be lit internally using "Red" LED modules.

Electrical : 120 volts, UL Listed & Labeled, LED power supplies housed inside raceway.

VOLTAGAGE
 120 Volts
 277 Volts



JNB Signs
 INCORPORATED
 1931 Venture Drive, Suite 1, Janesville, WI 53416
 Phone: 1-800-543-7197 Fax: 1-608-754-7892

CLIENT Five Guys Burgers & Fries
SALESMAN Matt Stroud
ARTIST Cory

CUSTOMERS SIGNATURE *[Signature]*
DATE 01-23-09
DRAWING 03Z76-06 1 of 1

218