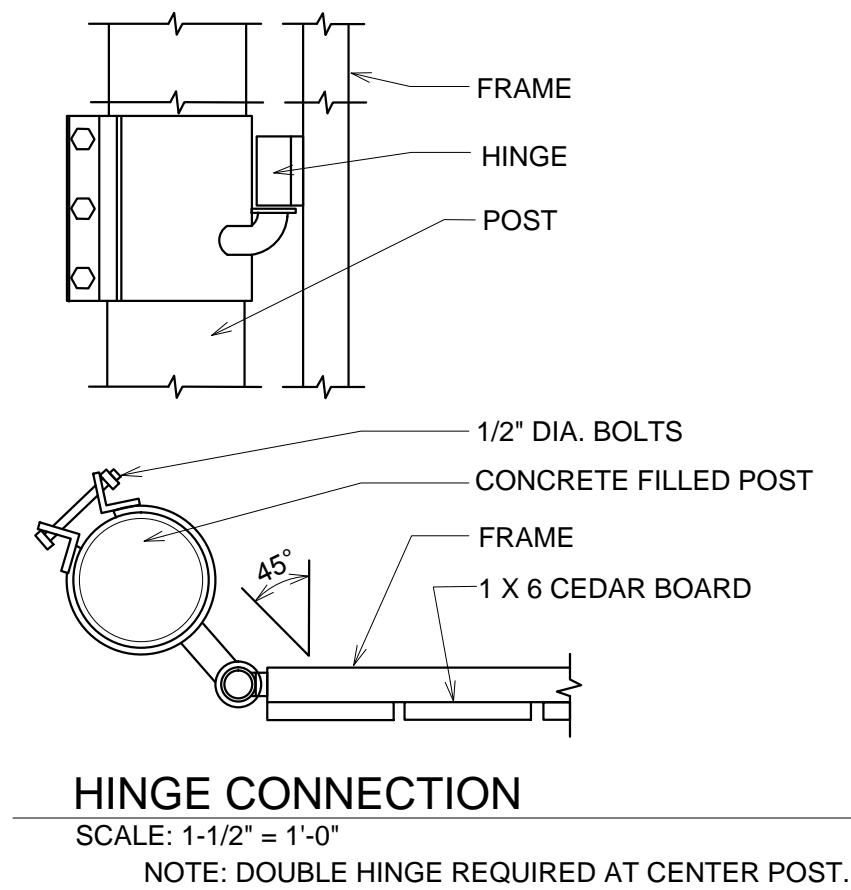
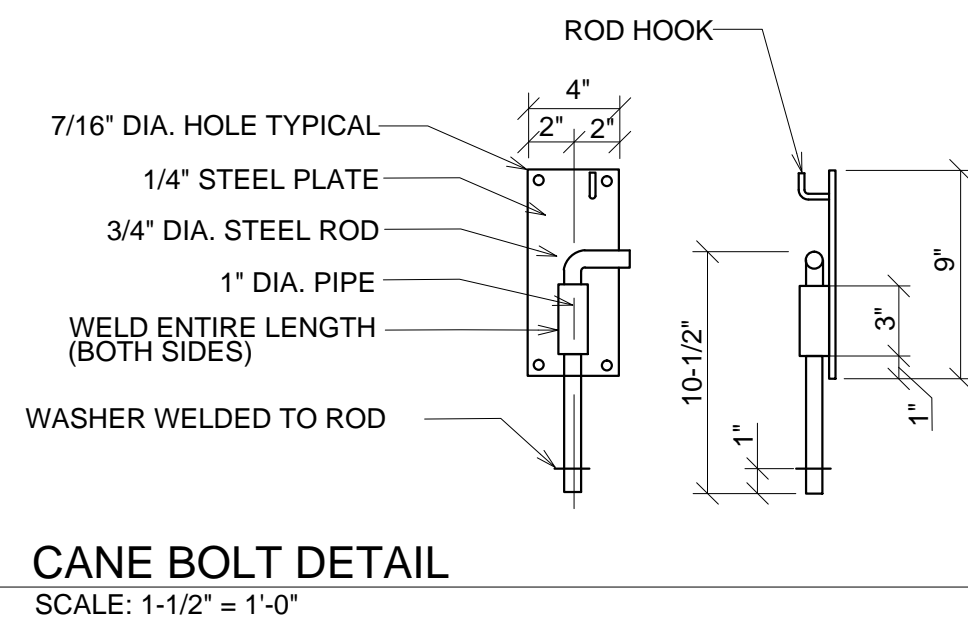
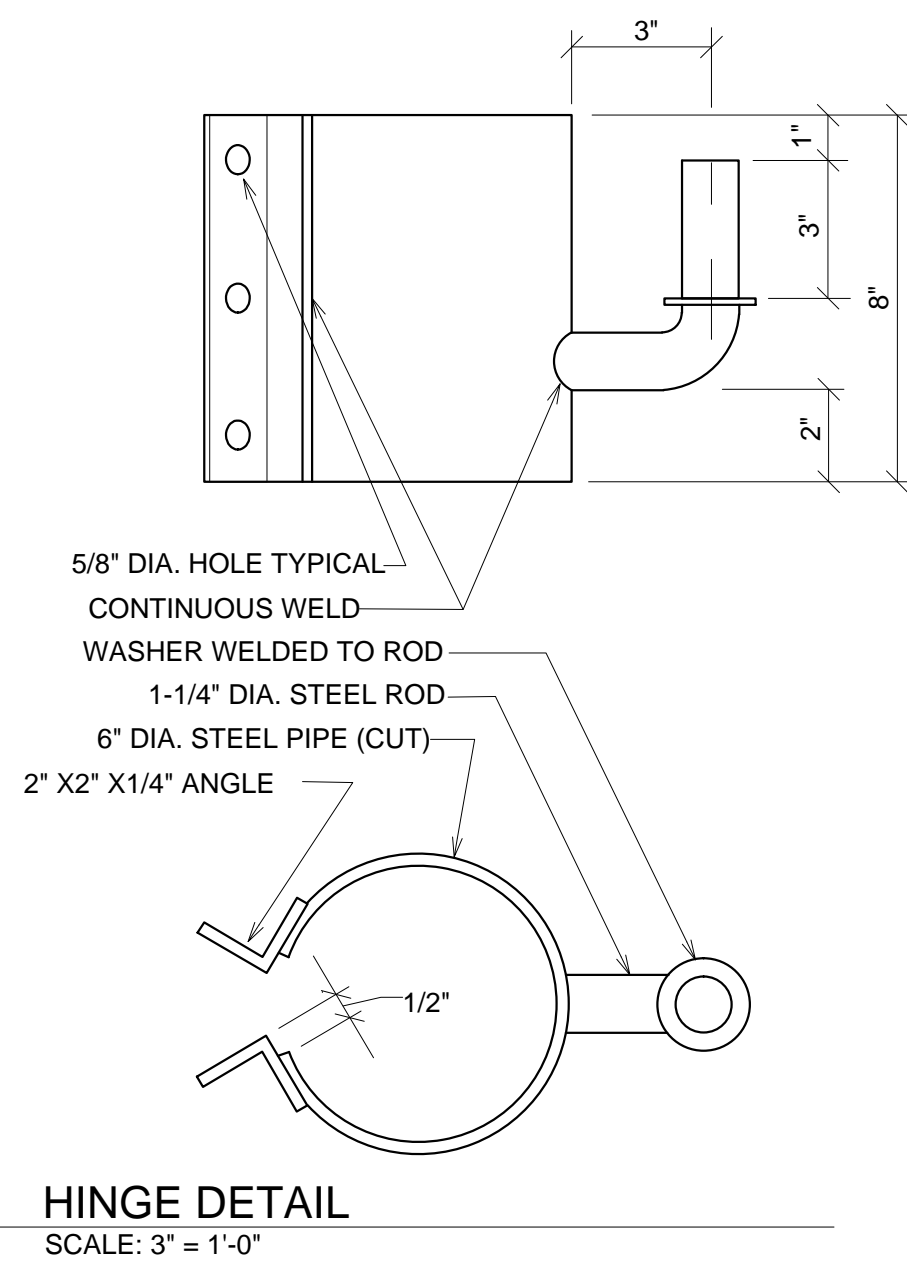
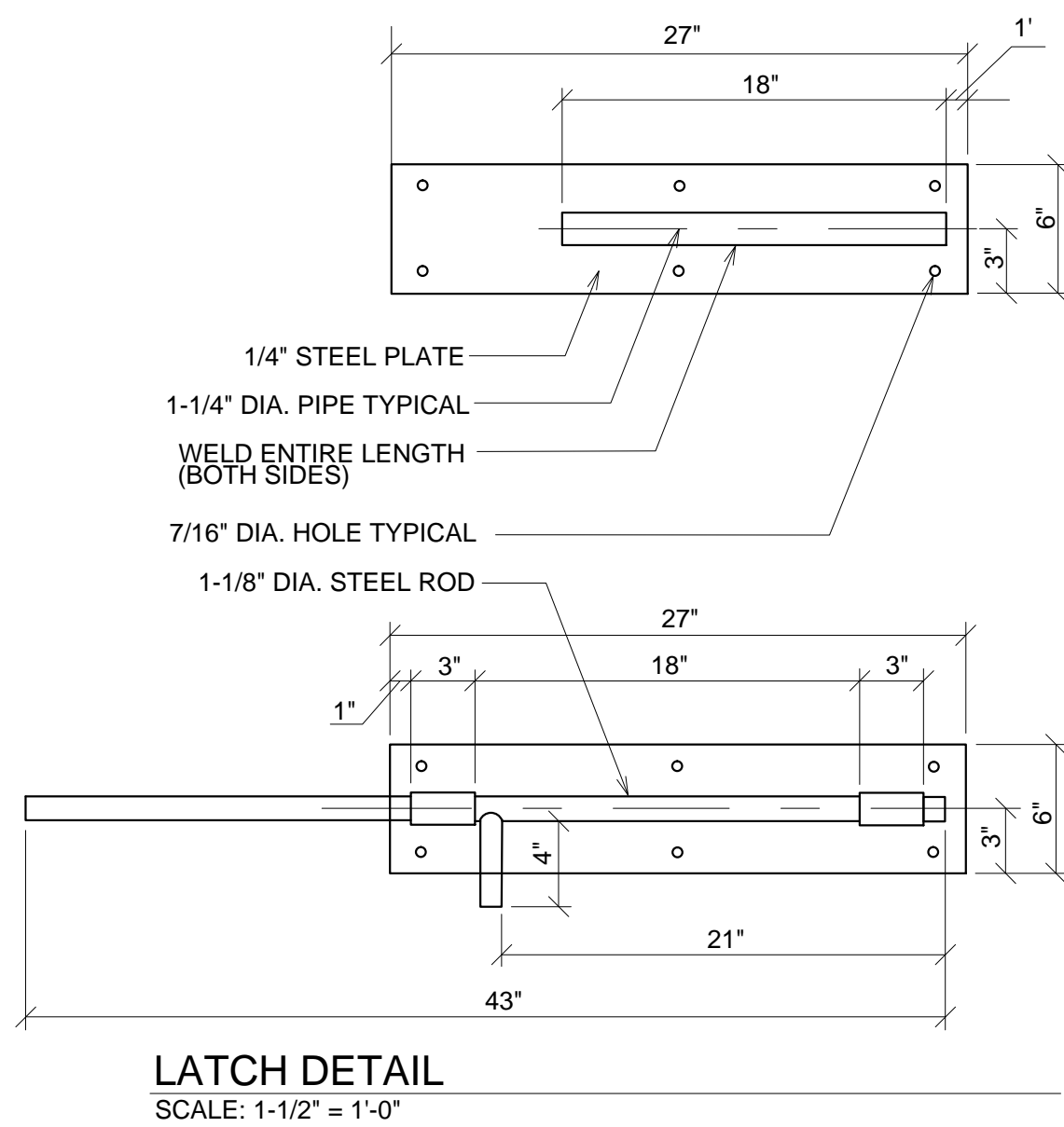
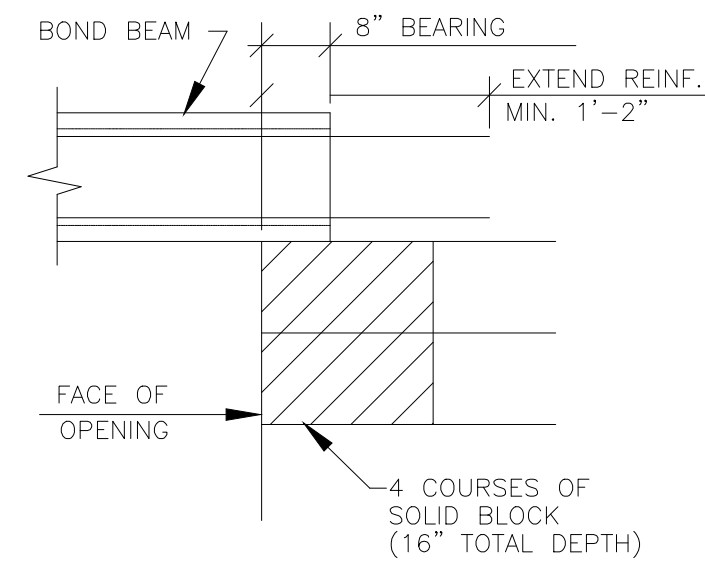


LINTEL SCHEDULE			
MARK	MEMBER	SHAPE	REMARKS
L1	8x8 BOND BEAM W/2-#5		GROUT SOLID BOND BEAM. SEE DETAIL 4/S.1.1



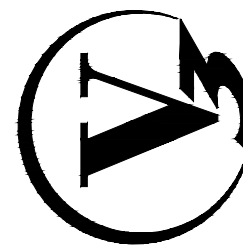
NOTE: SEE SHEET SS-1.2 FOR ADDITIONAL INFORMATION.

PREPARED FOR:
McDonald's USA, LLC
These drawings and specifications are the confidential and proprietary property of McDonald's USA, LLC and shall not be copied or reproduced without written authorization. The contract documents were prepared by McDonald's USA, LLC and shall not be used for any other project or not suitable for use on a different site at a later time. Use of these drawings for reference or example on another project requires the services of properly licensed architects and engineers. Reproduction of the contract documents for reuse on another project is not authorized.

DRAWN BY CJB	STD ISSUE DATE 10/21/16	REVIEWED BY PJM	DATE ISSUED 10/21/16
TITLE TRASH CORRAL	DESCRIPTION McDONALD'S - ORLAND PARK, ILLINOIS	SITE ADDRESS 14445 S. LAGRANGE ROAD, ORLAND PARK, IL	

SHEET NO.
SS-1.3
TRASH CORRAL

PREPARED BY:



V3 Companies
7325 Janes Avenue
Woodridge, IL 60517
630.724.9200 phone
630.724.9202 fax
www.v3co.com

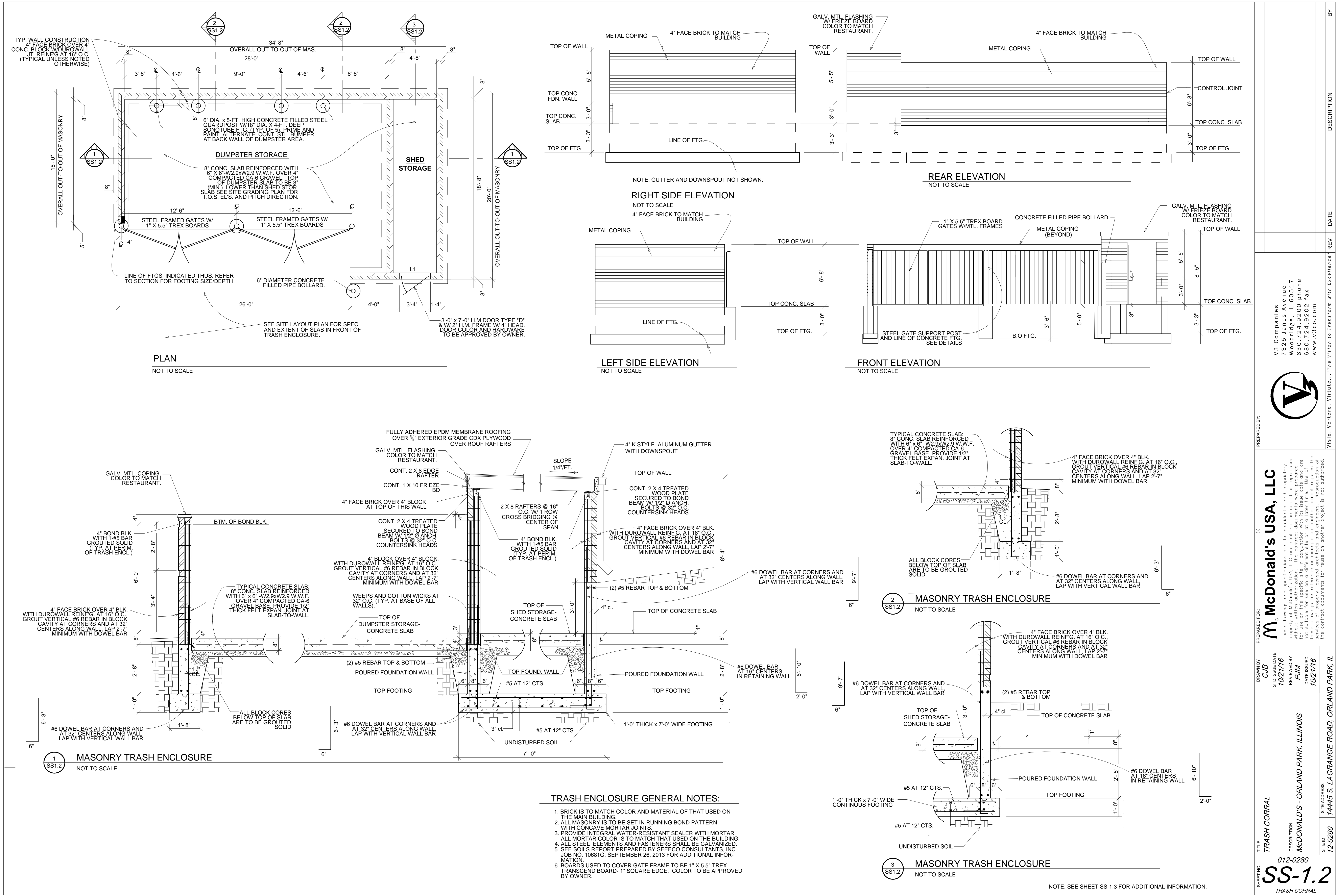
Visio, Vertere, Virtute... "The Vision to Transform with Excellence"

DESCRIPTION

DATE

REV

BY



PREPARED BY:				V3 Companies 7325 Janes Avenue Woodridge, IL 60517 630.724.9200 phone 630.724.9202 fax www.v3co.com				V3 Visio, Virtute, Virtute... "The Vision to Transform with Excellence"			
PREPARED FOR:				McDonald's USA, LLC				V3			
DRAWN BY:				CUB				TRASH CORRAL			
STD ISSUE DATE:				10/21/16				DESCRIPTION			
REVIEWED BY:				PJM				McDONALD'S - ORLAND PARK, ILLINOIS			
DATE ISSUED:				10/21/16				SITE ADDRESS			
SHEET NO.				12-0280				14445 S. LAGRANGE ROAD, ORLAND PARK, IL			
SHEET NO.				012-0280				SS-1.2			
SHEET NO.				TRASH CORRAL				TRASH CORRAL			
BY				DATE				REVISION			
DESCRIPTION				DATE				REVISION			