



VILLAGE OF ORLAND PARK

14700 Ravinia Avenue
Orland Park, IL 60462
www.orland-park.il.us

Meeting Agenda

Plan Commission

Louis Stephens, Chairman

*Commissioners: Judith Jacobs, Paul Aubin, Steve Dzierwa,
Nick Parisi, John J. Paul and Laura Murphy*

Tuesday, January 14, 2014

7:00 PM

Village Hall

CALLED TO ORDER/ROLL CALL

APPROVAL OF MINUTES

Minutes of the December 10, 2013

Attachments: [December 10, 2013 Plan Commission Meeting Minutes.pdf](#)

PUBLIC HEARINGS

McDonald's Restaurant - 14445 LaGrange Road

Attachments: [Elevations S & W](#)
[Elevations N & E](#)
[3D SW](#)
[3D NW](#)
[3D NE](#)
[Patio birdseye](#)
[Fence](#)
[Fence Columns](#)
[Patio specifications](#)
[Patio perspective](#)
[Site Plan](#)

NON-PUBLIC HEARINGS

OTHER BUSINESS

Memo: New Petitions & Appearance Review

Attachments: [01-14-14 Plan Commission Memo.docx](#)

ADJOURNMENT

VILLAGE OF ORLAND PARK

*14700 Ravinia Avenue
Orland Park, IL 60462
www.orland-park.il.us*



Meeting Minutes

Tuesday, December 10, 2013

7:00 PM

Village Hall

Plan Commission

Louis Stephens, Chairman

*Commissioners: Judith Jacobs, Paul Aubin, Steve Dzierwa,
Nick Parisi, John J. Paul and Laura Murphy*

CALLED TO ORDER/ROLL CALL

The meeting was called to order by the Plan Commission Chairman, Mr. Louis Stephens, at 7:00 p.m.

Present: 5 - Chairman Stephens; Member Aubin; Member Dzierwa; Member Parisi, Member Paul

Absent: 2 - Member Jacobs, Member Murphy

APPROVAL OF MINUTES**2013-0728 Minutes of the November 12, 2013 Plan Commission Meeting**

A motion was made by Commissioner Aubin, seconded by Commissioner Parisi to approve the minutes of the November 12, 2013 Plan Commission with the following changes.

On Page 9, during Nix's testimony, add the word 'is' after the phrase 'that really typically'.

On Page 10, during Flom's testimony, correct the spelling of the word 'than'.

On Page 15, during Flom's testimony, add the word 'to' after the phrase 'they have indicated that they are open'.

APPROVED

Aye: 5 - Chairman Stephens, Member Aubin, Member Dzierwa, Member Parisi and Member Paul

Nay: 0

Absent: 2 - Member Jacobs and Member Murphy

PUBLIC HEARINGS**2013-0565 McDonald's Restaurant - 14445 LaGrange Road**

STEPHENS: The chair will entertain a motion to continue this petition to the January 14, 2013 Plan Commission Meeting.

Aubin:

I move to continue the public hearing for file number 2013-0565, McDonald's Restaurant, until the January 14, 2014 Plan Commission meeting.

PAUL: Second
CONTINUED

Aye: 5 - Chairman Stephens, Member Aubin, Member Dzierwa, Member Parisi and Member Paul

Nay: 0

Absent: 2 - Member Jacobs and Member Murphy

2013-0647 2013 Land Development Code Amendments II

PITTOS: Staff presentation made in accordance with the written staff report dated December 10, 2013.

STEPHENS: Seeing no one in the audience, we are going to go to the Commissioners for comments. Commissioner Parisi?

PARISI: No comments.

STEPHENS: Ok, thank you. Commissioner Paul?

PAUL: I do not have any comments either, Mr. Chairman.

STEPHENS: Ok, Commissioner Dzierwa?

DZIERWA: Thank you, Mr. Chairman. I just have one comment for Mr. Pittos. As far as clarification amendments in part one. The last section where you talk about lots, you talk about clarification may state that any residential lot in the Village is one and a half mile extra territorial jurisdiction and cannot be less than 10,000 sq ft. How do you enforce that?

STEPHENS: The Village has to sign off on the recording plat.

PITTOS: The one and a half mile extra territorial jurisdiction applies to unincorporated areas. So if there was an unincorporated area between Orland Park and Homer Glen, despite that they are in separate counties, there would be a boundary agreement between Homer Glen and the Village of Orland Park establishing which unincorporated areas fall under Orland Park jurisdiction and which are under Homer Glen.

STEPHENS: Do we need unincorporated added in here?

PITTOS: No that is part of the meaning of extra territorial jurisdiction.

DZIERWA: That's fine. Thank you.

STEPHENS: Ok, Commissioner Aubin?

AUBIN: I do not have any comments.

STEPHENS: Ok, I just have a couple. The one thing that concerns me, section 6H, the language. Let's go back to number three: fences and barriers, under your red line, do we still want to keep the word swimming pool in that language?

PITTOS: Yes, because the rest of the provision refers to the fence permit that can be submitted with the swimming pool permit. So you can't take out the fence if you have a swimming pool.

STEPHENS: Ok, fine. Then go to 6H, removal of facility. You have "the Village shall be authorized to remove a freestanding wireless communication facility". Can I suggest this language in lieu of that? "The Village reserves the right to retain the authority to remove a freestanding wireless communication facility." Because "shall be authorized" tells me that someone has to authorize it but "reserve the right to retain the authority" then I think we have the right.

PITTOS: Ok, that makes sense.

STEPHENS: Ok that is all of my changes.

AUBIN:

I move to accept as findings of fact of this Plan Commission the findings of fact set forth in this staff report, dated December 10, 2013.

And

I move to recommend to the Village Board of Trustees to approve the Land Development Code Amendments as shown in the attachment titled "Part Three: Attachments", prepared by the Development Services Department and dated December 4, 2013, for Sections 2-102, 6-202, 6-203, 6-203.5, 6-207, 6-208, 6-210, 6-212, 6-302, 6-304, 6-305, 6-306, 6-307, 6-310, 6-311h as amended with substitution language, 6-311, 6-402, 6-405 and 6-406.

PAUL: Second.

RECOMMENDED FOR APPROVAL

Aye: 5 - Chairman Stephens, Member Aubin, Member Dzierwa, Member Parisi and Member Paul

Nay: 0

Absent: 2 - Member Jacobs and Member Murphy

NON-PUBLIC HEARINGS

None.

OTHER BUSINESS

2013-0156 Memo: New Petitions & Appearance Review

STEPHENS: Is there any discussion about the memo for new petitions and appearance review? Is there any other business for Commissioners? I would like to wish the staff and Commissioners merry Christmas and a healthy and

prosperous new year.

ADJOURNMENT

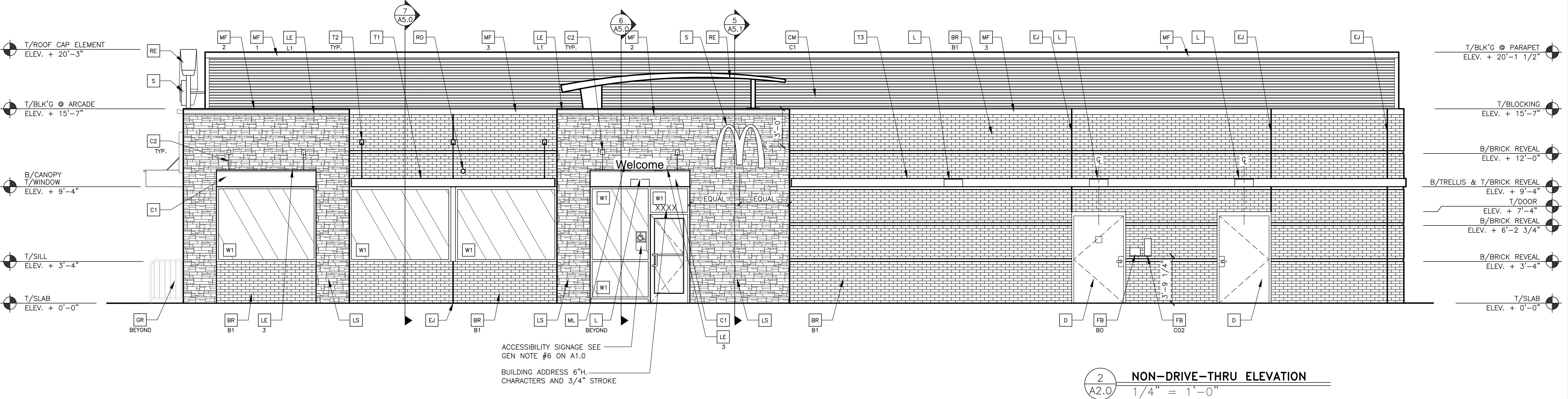
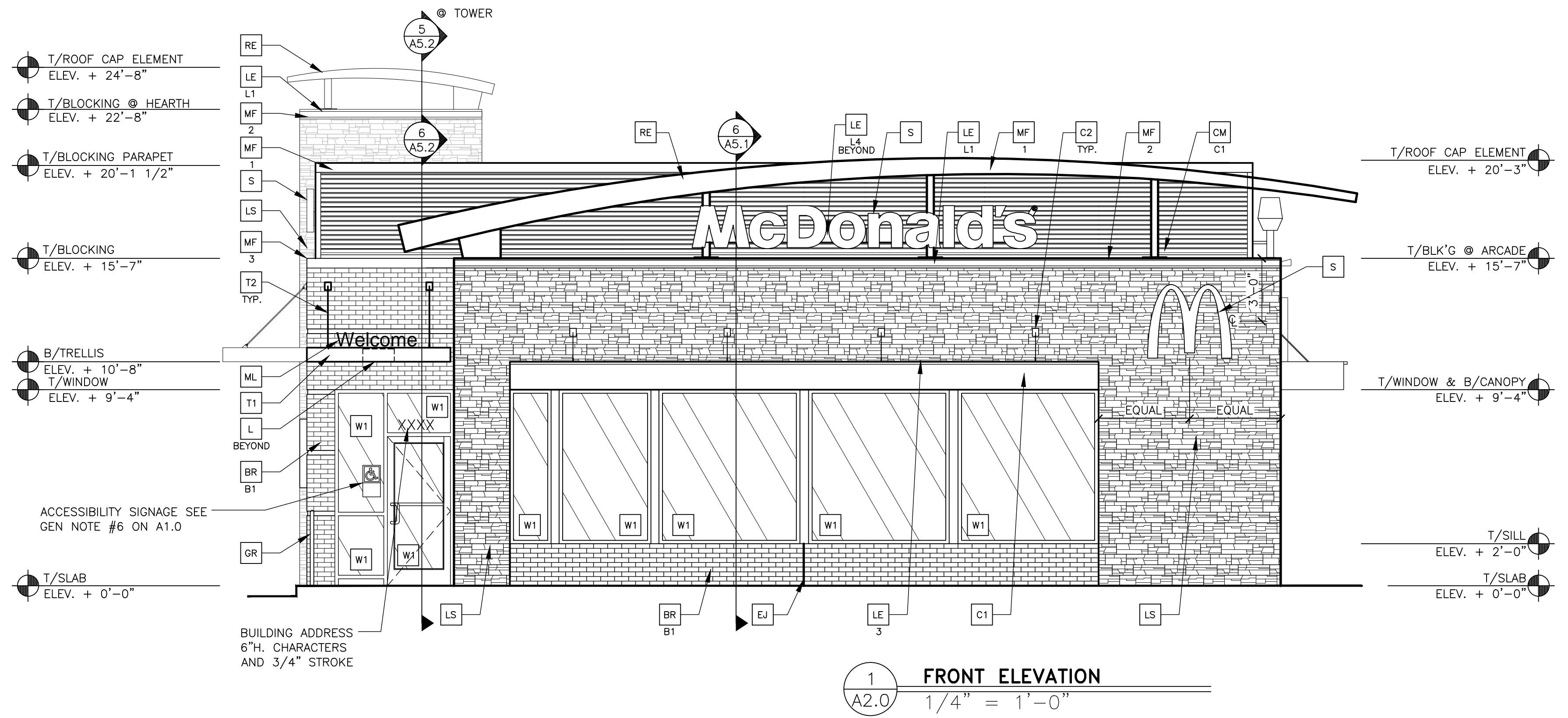
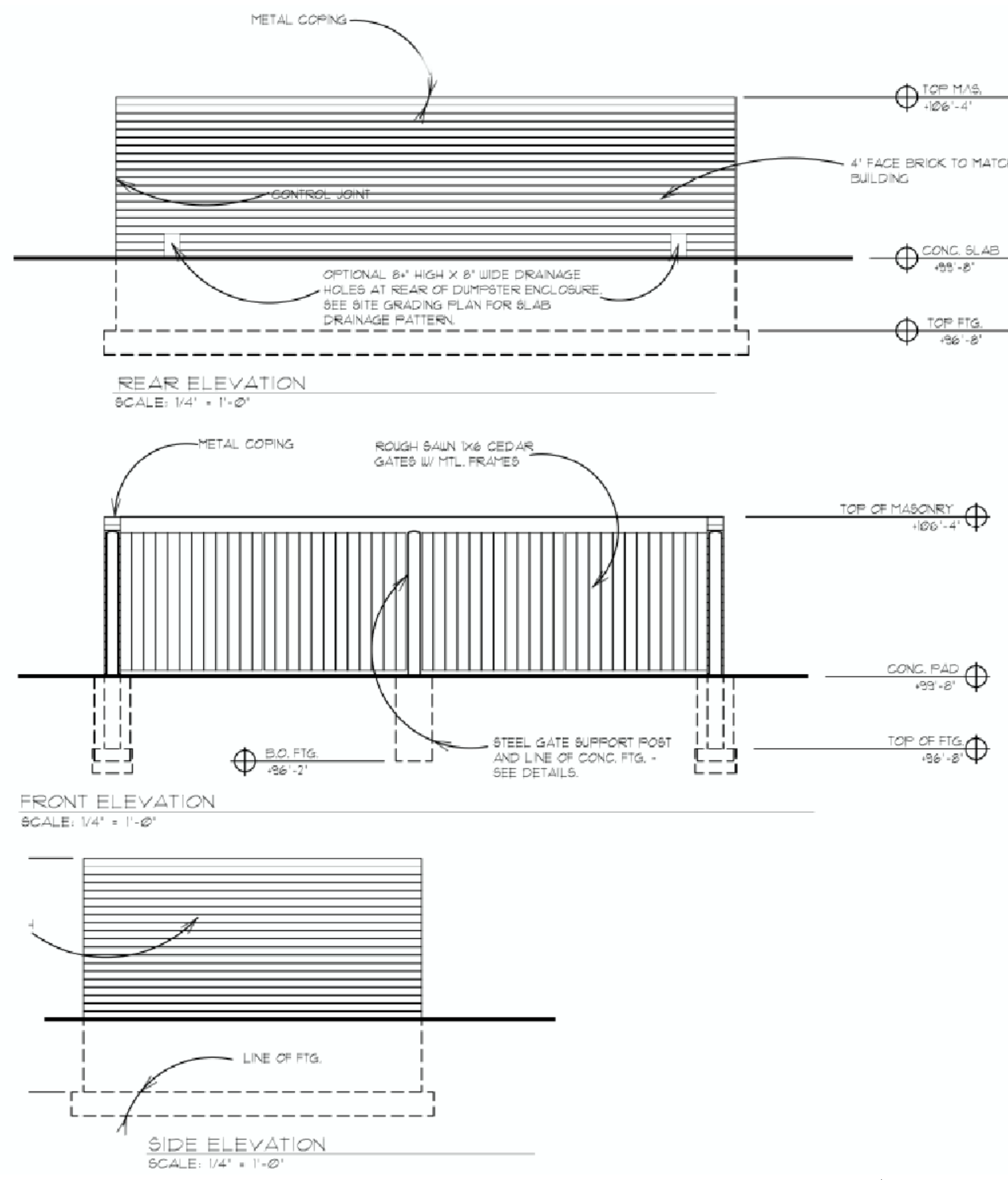
There being no further business before the Plan Commission, the Chairman adjourned the meeting.

STEPHENS: This meeting is adjourned at 7:38 p.m.

Respectfully submitted,

Heather Zorena
Recording Secretary

K:\DIV\CENTRAL\CH\012-0280-00-0 ORLAND PARK, IL - LAGRANGE RD (CORE STATES)\012-0280-00-1 ORLAND PARK, IL - LAGRANGE - PRELIMINARY A-ELEV.DWG 07-26-2013 08:26



KEY NOTES:

- BR** FACEBRICK
- B1** - COLOR: "TRUBINO RED VELOUR" BY BELDEN OR EQUAL
- B2** - "MODULAR MIDLAND BLEND A" BY BELDEN OR EQUAL
- C1** ALUMINUM CANOPY SYSTEM (COLOR: GOLD)
- C2** ALUMINUM CANOPY TIE-BACK SYSTEM
- CM** CORRUGATED METAL PANEL - SEE 1B/A5.0
- C1** - COLOR: "CITYSCAPE" BY METAL-ERA
- D** HOLLOW METAL DOOR - PAINT TO MATCH COLOR OF SURROUNDING MATERIAL
- EJ** EXPANSION JOINT, SEE DETAIL 7/A4.1
- FB** BULK CO2 FILL BOX (EOPM SCHEDULE ITEM 49.00)
- CO2** - CO2 = BULK OIL FILL BOX (EOPM SCHEDULE ITEM 700.18) - BO = CONFIRM USE WITH MCD PROJECT MANAGER
- GR** GUARD RAIL - SEE SITE PLAN FOR EXACT LOCATION AND LENGTH
- L** LIGHT FIXTURE (WALL SCENCE) - SEE ELECTRICAL
- LE** ACCENT LIGHTING - SEE ELECTRICAL
- L1** - LED LIGHT:
- L1** = UP AND DOWN FIXTURE
- L2** = DOWN ONLY FIXTURE
- L3** = INTEGRAL CANOPY FIXTURE
- L4** = UP ONLY FIXTURE
- LS** QUARRIED STONE BY ARRISGRAFT OLD COUNTRY BUILDING STONE: SUGARCANE -MORTAR COLOR TO MATCH
- ML** METAL LETTERING - BY OTHERS
- MF** METAL FASCIA - COLOR TO MATCH CORRUGATED METAL PANEL - SEE 1/A5.0
- 1** - TYPE:
- 1** = PRE-FAB ANCHOR-TITE FASCIA
- 2** = PRE-FAB CUSTOM ARCADE FASCIA
- 3** = PRE-FAB MASONRY CAP FASCIA
- PB** PIPE BOLLARD - PAINTED YELLOW
- PT** (RMHC) COIN COLLECTOR UNIT #WFT DT2000 STD CALL 1-888-743-7435 TO ORDER
- RE** ROOF CAP ELEMENT BY OTHERS
- RO** ROOF DRAIN OVERFLOW PIPE PAINT TO MATCH SURROUNDING MATERIAL
- T1** ALUMINUM TRELLIS SYSTEM
- T2** TRELLIS TIE-BACK SYSTEM
- T3** ALUMINUM TRELLIS 2" x 8" WALL FASCIA SYSTEM - REFER TO SIM. DETAIL 3 ON SHEET A5.1
- S** McDONALD'S SIGNAGE BY OTHERS - UNDER SEPARATE PERMIT.
- W1** EXTERIOR WINDOW ASSEMBLY - TEMPERED GLASS - SEE ASSEMBLY NOTES
- W1** EXTERIOR WINDOW ASSEMBLY - SEE A5.0
- S** = SPANDREL GLASS
- W2** DRIVE-THRU WINDOW BY READY ACCESS 600 SERIES, 36" SERVICE HEIGHT WITH TRANSOM - MANUAL OPEN; ELECTRONIC RELEASE
- XX** - SLIDE DIRECTION: RL = RIGHT TO LEFT, LR = LEFT TO RIGHT

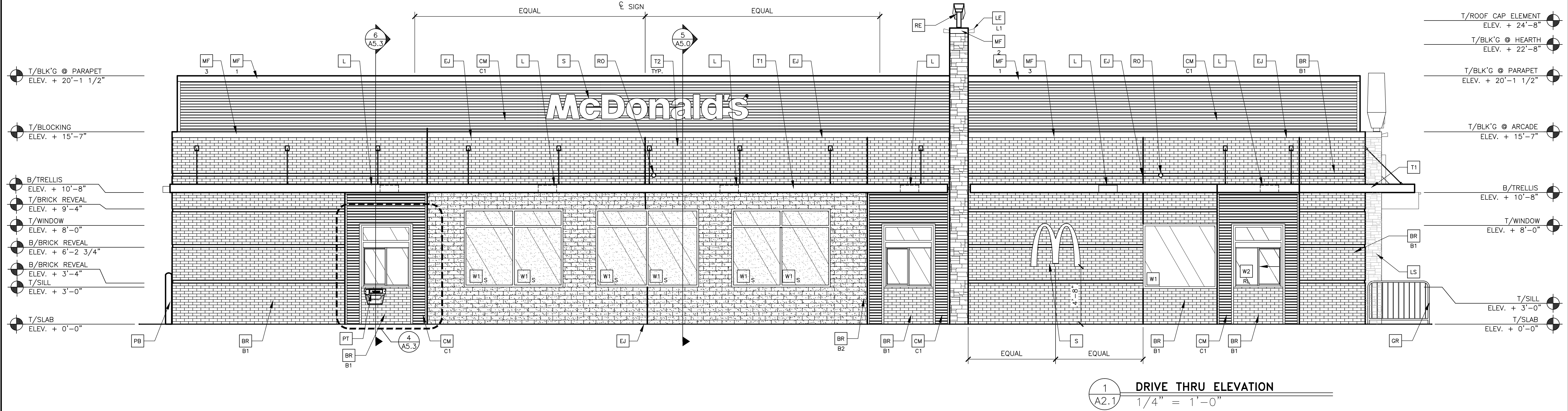
NO.	DATE	DESCRIPTION	REV.	DATE	DESCRIPTION	BY.

PREPARED FOR: **McDonald's USA, LLC**
 © 2013 McDonald's USA, LLC
 These drawings and specifications are the confidential and proprietary property of McDonald's USA, LLC and shall not be copied or reproduced without the prior written permission of McDonald's USA, LLC. Use of these drawings for reference or example on another project requires the contract documents for reuse on another project is not authorized.

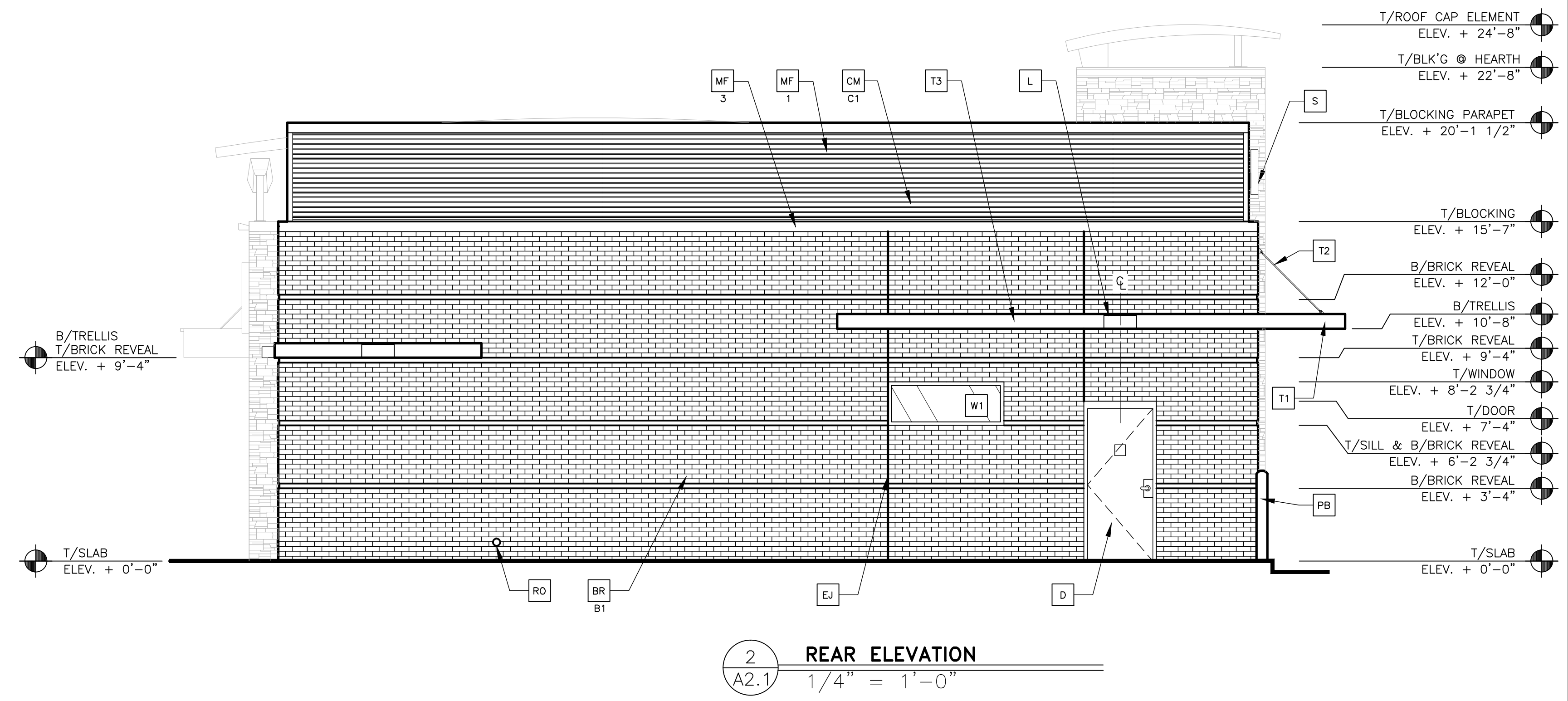
DRAWN BY: **2013 STANDARD BUILDING**
 STD ISSUE DATE: **4597-STEEL/STEEL**
 2013_06
 REVIEWED BY: **STEEL BEARING WALLS W/4" BRICK EXTERIOR FINISH**
 DATE ISSUED: **STEEL ROOF TRUSS FRAMING**
 MM DD YYYY: **STONE EXTERIOR FINISH ARCADE/ENTRY**
 SITE ADDRESS: **012-0280**
 ORLAND PARK, IL: **1445 LAGRANGE RD**

SHEET NO. **A2.0**
 ELEVATIONS

K:\DIV\CENTRAL\CH\012-0280-00-0 ORLAND PARK, IL - LAGRANGE RD (CORE STATES)\012-0280-00-1 ORLAND PARK, IL - LAGRANGE - PRELIMINARY A-ELEV.DWG 07-26-2013 08:26



1 DRIVE THRU ELEVATION
A2.1 1/4" = 1'-0"



2 REAR ELEVATION
A2.1 1/4" = 1'-0"

KEY NOTES:

- | | | | | | |
|--|--|---|---|---|--|
| <p>BR FACEBRICK
B1 - COLOR: "RUBIO RED VELOUR" BY BELDEN OR EQUAL
B2 = "MODULAR MIDLAND BLEND A" BY BELDEN OR EQUAL</p> <p>C1 ALUMINUM CANOPY SYSTEM (COLOR: GOLD)</p> <p>C2 ALUMINUM CANOPY TIE-BACK SYSTEM</p> <p>CM CORRUGATED METAL PANEL - SEE 1B/A5.0
C1 - COLOR: "CITYSCAPE" BY METAL-ERA</p> | <p>D HOLLOW METAL DOOR - PAINT TO MATCH COLOR OF SURROUNDING MATERIAL</p> <p>EJ EXPANSION JOINT, SEE DETAIL 7/A4.1</p> <p>FB BULK CO2 FILL BOX (EOPM SCHEDULE ITEM 49.00)
CO2 - CO2 = BULK OIL FILL BOX (EOPM SCHEDULE ITEM 700.18) - BO = CONFIRM USE WITH MCD PROJECT MANAGER</p> <p>GR GUARD RAIL -SEE SITE PLAN FOR EXACT LOCATION AND LENGTH</p> <p>L LIGHT FIXTURE (WALL SCONCE) - SEE ELECTRICAL</p> | <p>LE ACCENT LIGHTING - SEE ELECTRICAL</p> <p>L1-LED LIGHT:
L1 = UP AND DOWN FIXTURE
L2 = DOWN ONLY FIXTURE
L3 = INTEGRAL CANOPY FIXTURE
L4 = UP ONLY FIXTURE</p> <p>LS QUARRIED STONE BY ARRISCRRAFT OLD COUNTRY BUILDING STONE; SUGARCANE -MORTAR COLOR TO MATCH</p> | <p>ML METAL LETTERING - BY OTHERS</p> <p>MF METAL FASCIA - COLOR TO MATCH CORRUGATED METAL PANEL - SEE 1/A5.0
1 - TYPE:
1 = PRE-FAB ANCHOR-TITE FASCIA
2 = PRE-FAB CUSTOM ARCADE FASCIA
3 = PRE-FAB MASONRY CAP FASCIA</p> <p>PB PIPE BOLLARD - PAINTED YELLOW (RMHC) COIN COLLECTOR UNIT #WPT D12000 STD CALL 1-888-743-7435 TO ORDER</p> | <p>RE ROOF CAP ELEMENT BY OTHERS</p> <p>RO ROOF DRAIN OVERFLOW PIPE PAINT TO MATCH SURROUNDING MATERIAL</p> <p>T1 ALUMINUM TRELLIS SYSTEM</p> <p>T2 TRELLIS TIE-BACK SYSTEM</p> <p>T3 ALUMINUM TRELLIS 2" x 8" WALL FASCIA SYSTEM - REFER TO SIM. DETAIL 3 ON SHEET A5.1</p> | <p>S McDONALD'S SIGNAGE BY OTHERS - UNDER SEPARATE PERMIT.</p> <p>W1 EXTERIOR WINDOW ASSEMBLY - TEMPERED GLASS - SEE ASSEMBLY NOTES</p> <p>W1 EXTERIOR WINDOW ASSEMBLY - SEE A5.0
S = SPANDREL GLASS</p> <p>W2 DRIVE-THRU WINDOW BY READY ACCESS 600 SERIES, 36" SERVICE HEIGHT WITH TRANSOM - MANUAL OPEN; ELECTRONIC RELEASE
XX = SLIDE DIRECTION: RL = RIGHT TO LEFT
LR = LEFT TO RIGHT</p> |
|--|--|---|---|---|--|

PREPARED FOR: McDonald's USA, LLC		DRAWN BY: _____	
STD ISSUE DATE: 2013_06	REVIEWED BY: _____	DATE ISSUED: MM DD YYYY	SITE ADDRESS: ORLAND PARK, IL 012-0280 1445 LAGRANGE RD
TITLE: 2013 STANDARD BUILDING 4597-STEEL/STEEL		DESCRIPTION: STEEL BEARING WALLS W/4" BRICK EXTERIOR FINISH STEEL ROOF TRUSS FRAMING STONE EXTERIOR FINISH ARCADE/ENTRY	
SHEET NO. A2.1	ELEVATIONS	012-0280.00.1	ORLAND PARK, IL
BY: _____	DATE: _____	REV: _____	DESCRIPTION: _____

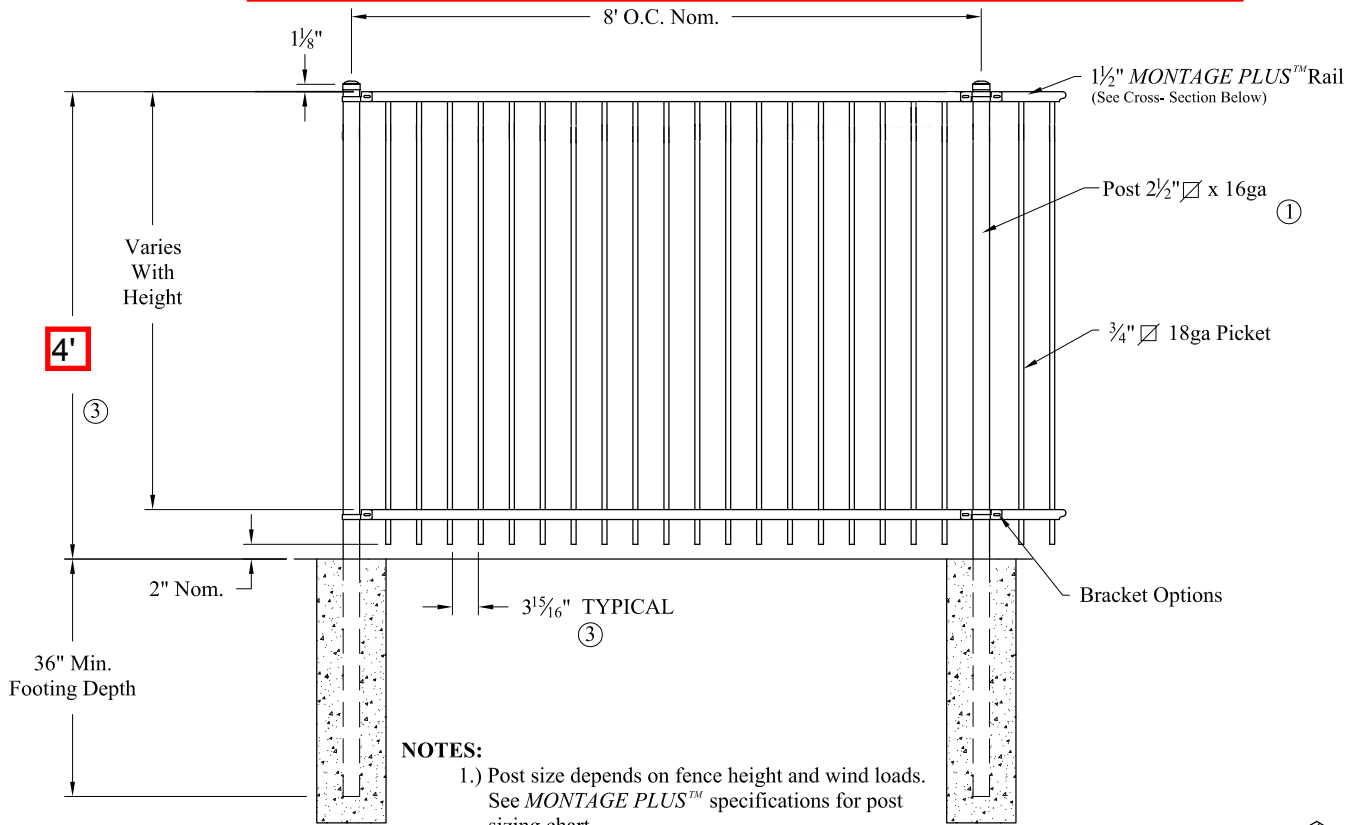








Preliminarily, full 16' sections between proposed piers - AU 12/10/12

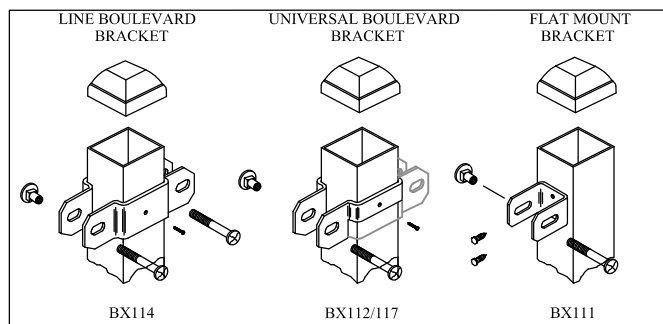
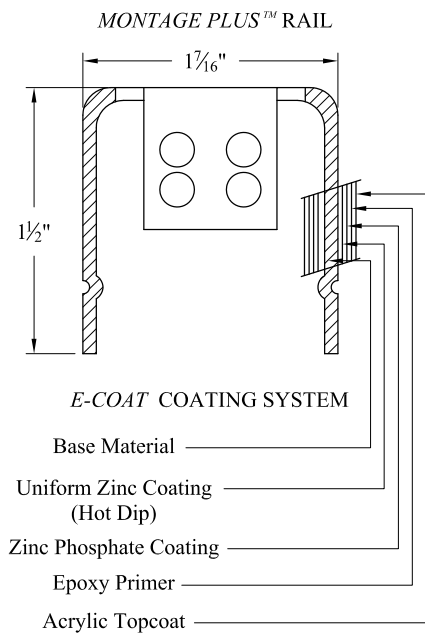
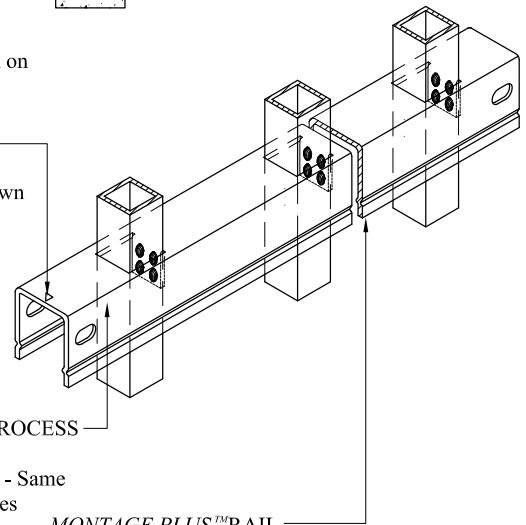


NOTES:

- 1.) Post size depends on fence height and wind loads. See MONTAGE PLUS™ specifications for post sizing chart.
- 2.) Third rail required for *Double Rings*.
- 3.) Available in 3" air space and/or Flush Bottom on most heights.

RAKING DIRECTIONAL ARROW

Welded panel can be raked 30" over 8' with arrow pointing down grade.



**COMMERCIAL STRENGTH WELDED STEEL PANEL
PRE-ASSEMBLED**

Values shown are nominal and not to be used for installation purposes. See product specification for installation requirements.

IRMISO

Title: **MONTAGE PLUS MAJESTIC 2/3-RAIL**

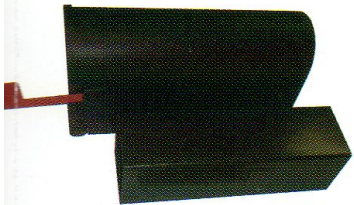
DR: CI	SH . 1 of 1	SCALE: DO NOT SCALE
CK: ME	Date 6/28/10	REV: e



AMERISTAR®

1555 N. Mingo
Tulsa, OK 74116
1-888-333-3422
www.ameristarfence.com

SERIES

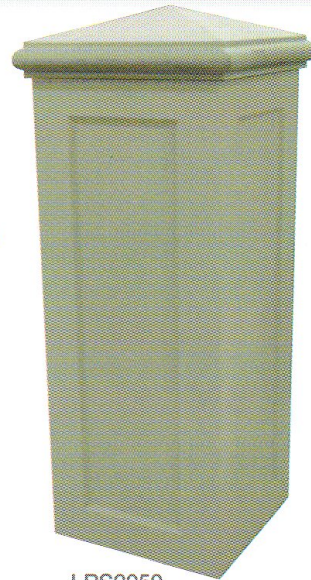


MB

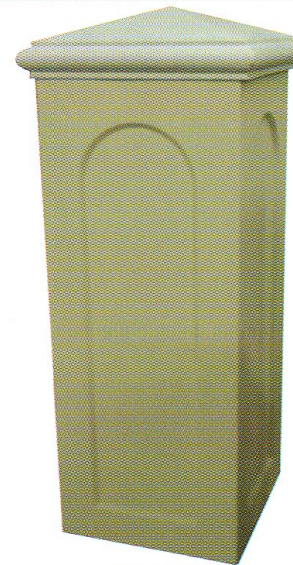


IAK14BR

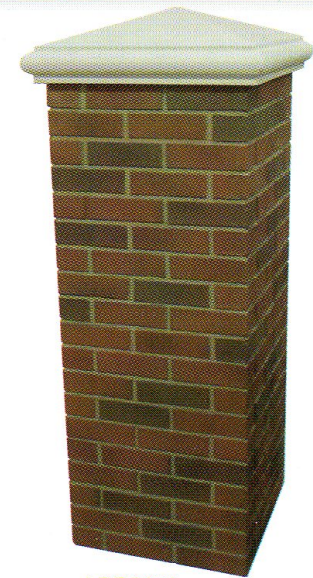
EZ-MASON™
COLUMN STYLES



LPS2050



LPR2050



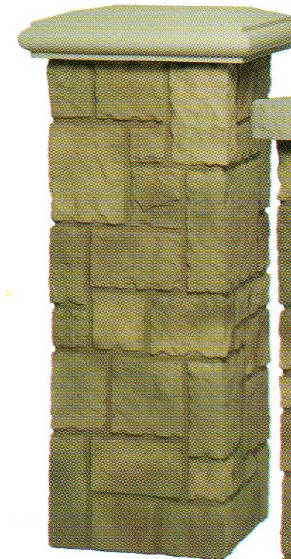
LBR2050



LLS2050



LCS2050

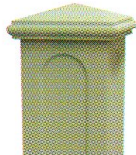


LCR2050



LMCR2050

COLUMN SLEEVE™ STYLES



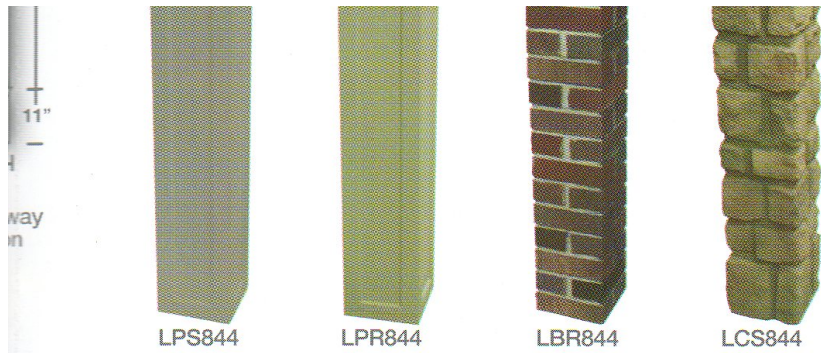
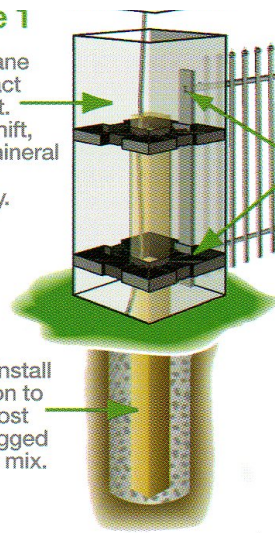


Figure 1

Durable polyurethane construction. Impact & UV fade resistant. Won't rot, crack, shift, scale or develop mineral efflorescence like traditional masonry.



Attach 4', 5', or 6' fencing directly to column base wall using common fasteners and support insert. Cut, drill or router openings for unique applications such as house numbers, outlets, plant holders, etc.

Rapidly install column on to 4" x 4" post set in bagged concrete mix.

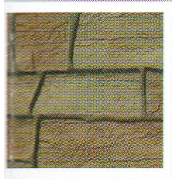
Figure 2



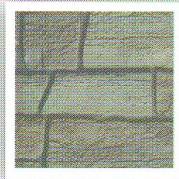
Mount by sliding over 4" x 4" or 6" x 6" deck or railing post.

ook of Brick, Stucco or Stone

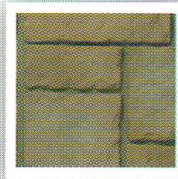
Colors Available in Castle Rock, Ledgestone, and Cobblestone



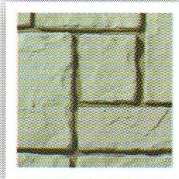
Sierra Sand



Limestone



Beige Blend



Marble Gray



Summer Tan



Dakota Blend

WAUSAU TILE, INC.



**FURNITURE
SPECIFICATIONS**



McDonald's Outdoor Environments

1. Wausau Tile's design department will provide you with a patio plan to suit your needs, style and Federal ADA requirements. Depending on the mounting style of chosen products, a contractor may be required to install certain items. Items that usually require a qualified contractor are:
 - a. Inground or surface mounted tables
 - b. Shade structures
 - c. Inground or surface mounted fencing
2. Building permits may be required depending on the scope of the project as well as local restrictions.
3. If shade structures or in-ground mounted tables are part of the project, the contractor will have to verify that core drilling is a viable option and that it will not affect any underground utilities.
4. All products purchased will have specification sheets sent to the owner specifying installation depth's and table heights that need to be followed to achieve chair access and comply with ADA requirements.
5. Fencing is available in (3) mounting options to fit specific site requirements with the bolt down option including shims to conform to surface irregularities.
6. Concrete chairs and side tables include leveling bolts that can be used to level the items on an uneven surface.
7. Although Wausau Tile's products require very little maintenance, smooth concrete tables will require an annual resealing. Touch up spray cans for the stained concrete and powder coated products are available if any of these items needs refinishing. Wausau Tile has maintenance items available for the entire product line.

The offer to sell Wausau Tile products is expressly limited to acceptance of the warranty terms set forth in this LIMITED WARRANTY. By purchasing a Wausau Tile product, you accept the LIMITED WARRANTY terms herein. THIS LIMITED WARRANTY AND REMEDIES HEREIN ARE EXCLUSIVE AND INSTEAD OF ALL OTHER WARRANTIES AND REMEDIES, WHETHER ORAL, WRITTEN, STATUTORY, LEGAL OR EQUITABLE, EXPRESS OR IMPLIED, INCLUDING WITHOUT LIMITATION, WARRANTIES OF MERCHANTABILITY AND FITNESS FOR A PARTICULAR PURPOSE AS WELL AS WARRANTIES AGAINST HIDDEN OR LATENT DEFECTS. ALL WARRANTIES ARE EXCLUDED EXCEPT THOSE EXPRESS WARRANTIES STATED ON THE FACE OF THIS LIMITED WARRANTY. REMEDIES FOR ANY BREACH OF THIS LIMITED WARRANTY ARE LIMITED TO WAUSAU TILE'S ABSOLUTE OPTION TO REPAIR OR REPLACE THE DEFECTIVE PRODUCT AND THERE IS NO OTHER REMEDY AVAILABLE. WAUSAU TILE SHALL NOT BE LIABLE FOR DAMAGE TO PROPERTY BEYOND WAUSAU TILE'S PRODUCT; AND, WAUSAU TILE IS NOT LIABLE FOR DIRECT, SPECIAL, INCIDENTAL, CONSEQUENTIAL, OR PUNITIVE DAMAGES FOR ANY CLAIMS, INCLUDING BUT NOT LIMITED TO TORT, STRICT LIABILITY, STATUTORY, BREACH OF EXPRESS WARRANTY, BREACH OF IMPLIED WARRANTY, AND BREACH OF CONTRACT. NO PERSON IS AUTHORIZED TO MAKE ADDITIONAL STATEMENTS, PROMISES, GUARANTIES, WARRANTIES OR REPRESENTATIONS REGARDING PERFORMANCE OF WAUSAU TILE PRODUCTS. Terms that are either additional to, conflicting with or different from those herein are excluded unless specifically agreed to in a separate writing and signed by a corporate officer or division manager of Wausau Tile. This LIMITED WARRANTY is for the benefit of the original purchaser of the Wausau Tile product who may transfer this LIMITED WARRANTY to the owner of the real estate where the warranted product is originally installed.

Concrete products may exhibit efflorescence which appears as a white stain on some colored concrete products as the result of moisture evaporation. Efflorescence is a common condition to which concrete products are susceptible. It generally clears up and eventually dissipates as concrete products age. Efflorescence is a condition that does not affect the structural integrity or the longevity of the product and is not covered under this warranty. Tile not installed immediately after delivery should be stored in a climate controlled environment.

Wausau Tile products are warranted to be free from defect in material and workmanship during manufacturing based on applicable industry standards. Warranty periods begin on delivery date of the warranted product and extend for the period listed below:

- Precast terrazzo products are warranted for two years.
- Terrazzo tile, plastic and metal pieces are warranted for one year.
- Framing and aluminum products are warranted for two years.
- Powder coating is warranted for two years.
- Thermo-plastic coating is warranted for five years.
- Concrete site furnishings are warranted for two years.
- Pavers are warranted for three years if properly installed according to both project specifications and Wausau Tile installation recommendations. Placing pavers on non-Wausau Tile pedestals voids this LIMITED WARRANTY.

If any Wausau Tile product fails to perform due to a defect in workmanship or materials within the applicable warranty period, then Wausau Tile, at its sole option, will either repair or replace the defective product. The dollar amount of warranty coverage under this LIMITED WARRANTY shall not exceed the invoiced price for the defective product itself, excluding sales tax and freight. This LIMITED WARRANTY is void if the product is not maintained as recommended by Wausau Tile. Wausau Tile's warranty does not cover cosmetic scratches, dents, normal discoloration or fading. Due to inherent properties of concrete and cement products, it is normal for variations in shading or color to be present in a finished product or occur over time due to sunlight exposure or other environmental factors and such variations in shading or color are not covered by this LIMITED WARRANTY. Wausau Tile's LIMITED WARRANTY does not cover cracking, chipping or other damage caused by: (a) settling or other foundation movement regardless whether caused by man-made or natural environmental causes, (b) failure of the structure or its foundation, (c) failure of non-Wausau Tile products or (d) improper storage or handling after delivery. There is no warranty for damage caused by impact, vandalism, acts of third parties or natural disaster. Alteration of product, floor or tiles voids this LIMITED WARRANTY. Installation of structures, fixtures or utilities on or through the product without prior written approval from Wausau Tile voids this LIMITED WARRANTY.

As a precondition to validate any warranty claim, purchaser must present written notice of a warranty claim to Wausau Tile within 30 days after a warranty claim accrues or within 30 days after purchaser first notices an alleged defect, whichever is earlier. If purchaser or its installer believes a defect exists, do not install the product; instead, contact Wausau Tile within 24 hours after notice of alleged defect and make a warranty claim to Wausau Tile. While this LIMITED WARRANTY is in effect, Wausau Tile and its agents shall have free access to inspect, test, repair or remedy the warranted product and Wausau Tile shall have the first opportunity to remedy any alleged defect.

In any dispute as to the LIMITED WARRANTY or defective product, the purchaser or Owner making a claim (Claimant) has the burden of proving all elements under applicable law plus: (1) the product was installed according to applicable industry and project specifications, (2) the product was maintained according to applicable maintenance recommendations, and (3) the product was defective within the meaning of this LIMITED WARRANTY. In the event a civil action is filed, Wausau Tile and Claimant shall attempt mediation facilitated by a mutually agreed upon neutral mediator before conducting formal discovery. At mediation, both Wausau Tile and Claimant shall each have a designated representative attend who has full authority to settle the civil action. Wausau Tile and Claimant shall be responsible for their own attorney fees and any other expense associated with mediation as well as paying for an equal share of the mediator's fee. To obtain installation or maintenance recommendations, request information on extended warranties or make a warranty claim contact: Wausau Tile, Inc., c/o Vice President of Operations by mail at PO Box 1520, Wausau, WI 54402 or by fax at 715-355-4627.





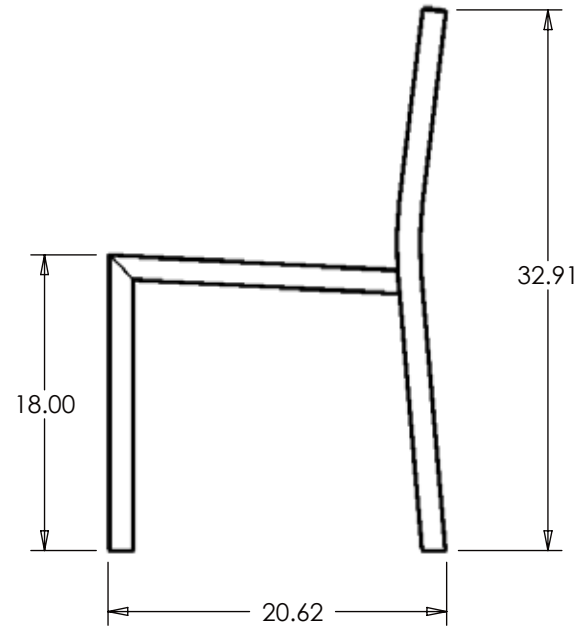
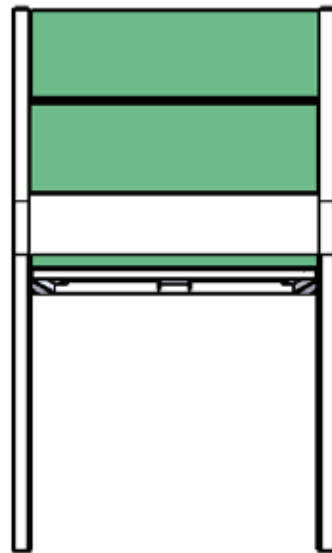
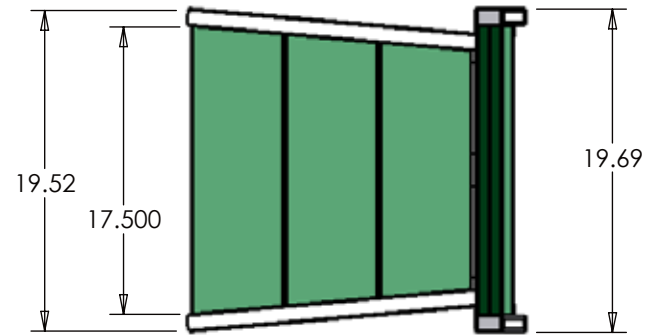
Size: 20" x 21" x 33"H
Weight: 30 Lbs.
Material: Powder coated aluminum frame
Composite wood seat panels

Powder Coating Colors:

Silk Gray - RAL7044
Beige Gray - RAL7006
Bronze
Black

Composite Wood Colors:

Weathered Wood
Milwaukee Brown

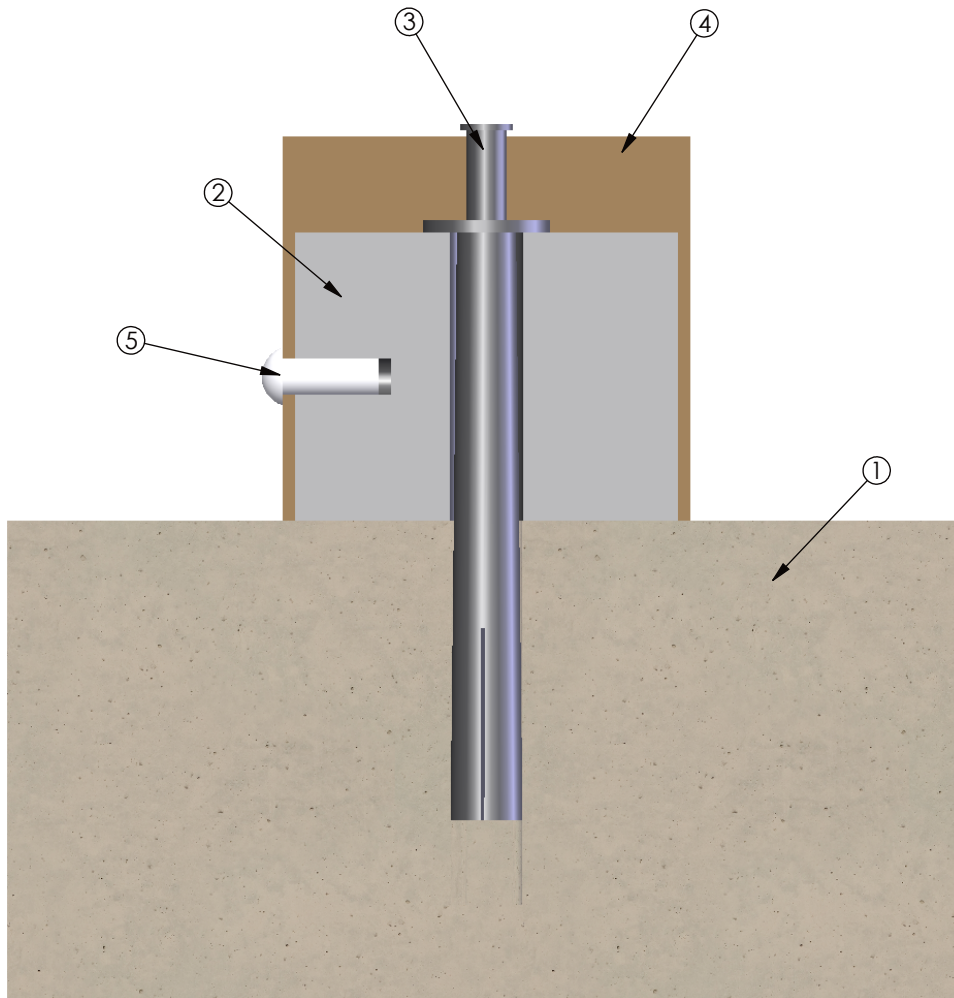


WAUSAU TILE SITE FURNISHINGS						P.O. BOX 1520 WAUSAU, WISCONSIN 54402-1520 800/388-8728		P.O. BOX 967 BANNING, CALIFORNIA 92220 800/233-6836	
REVISIONS					DRAWN BY		JOB		MATERIAL
NO.	DATE	BY	NO.	DATE	BY	TITLE	JOB NO.	DATE	WEIGHT
1			4			SCALE			FINISH
2			5			CHECKED			OPTIONS
3			6						DWG. NO.

UNLESS OTHERWISE SPECIFIED
DIMENSIONS ARE IN INCHES
ANGLE 80/80
2 PL. 80/01 3 PL. 80/005

2307

ITEM NO.	PART NUMBER	DESCRIPTION	QTY.
1	Concrete Slab		1
2	Anchor Block		1
3	Anchor pin		1
4	Chair Leg		1
5	Bolt		1



A TYPICAL CHAIR ANCHOR TO CONCRETE

SELEST A DRILL SIZE EQUAL TO DIAMETER OF THE ANCHOR.

DRILL HOLE IN CONCRETE SLAB.

ALIGNHOLES - THE DRILLED HOLE IN THE SLAB WITH THE HOLE IN THE ANCHOR BLOCK.

PUT ANCHOR THROUGH BOTH HOLES.

HAMMER TOP PIN ON ANCHOR UNTIL FLUSH WITH ANCHOR SLEEVE.

PLACE THE LEG OF CHAIR OVER ANCHOR BLOCK.

ALIGN HOLE AT BOTTOM OF CHAIR LEG TO THE THREADED HOLE IN THE SIDE OF THE ANCHOR BLOCK.

THREAD BOLT INTO HOLE AND TIGHTEN.

WAUSAU TILE SITE FURNISHINGS P.O. BOX 1520, WAUSAU, WI 54402
P.O. BOX 967, BANNING, CA 92220

REVISIONS						DRAWN BY	DATE	UNLESS OTHERWISE SPECIFIED DIMENSIONS ARE IN INCHES ANGLE $\pm 0.5^\circ$ 2-PL ± 0.01 3-PL ± 0.005	WEIGHT
NO.	DATE	BY	NO.	DATE	BY	MATERIAL	SCALE		
1			4				1:2	FINISH	
2			5					NUMBER	
3			6					Mounting Detail	



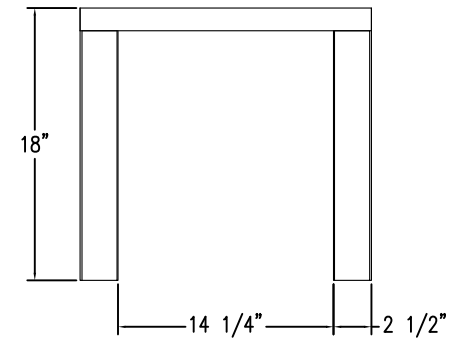
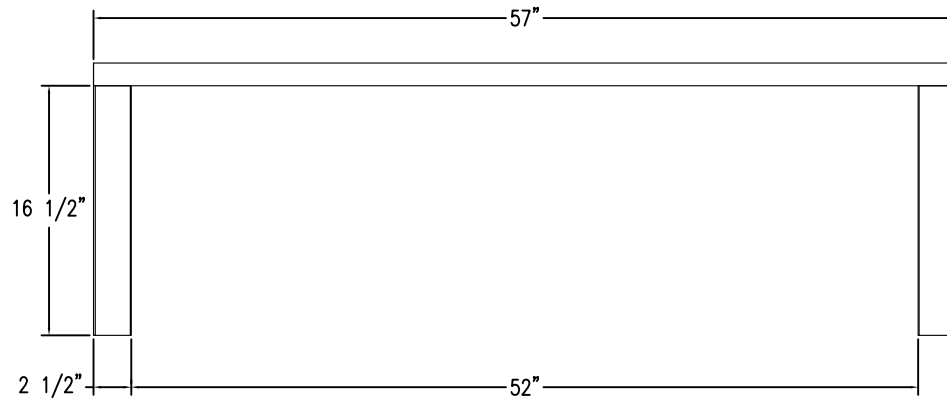
Size: 57" x 19" x 18"H
Weight: 60 Lbs.
Material: Powder coated aluminum frame
Wood composite seat panels

Powder Coating Colors:

Silk Gray - RAL7044
Beige Gray - RAL7006
Bronze
Black

Composite Wood Colors:

Weathered Wood
Milwaukee Brown



REVISIONS						DRAWN BY	JOB	MATERIAL	
NO.	DATE	BY	NO.	DATE	BY	TITLE	JOB NO.	WEIGHT	
1			4			SCALE	UNLESS OTHERWISE SPECIFIED DIMENSIONS ARE IN INCHES FINISH SELF 2 PL. 2020 3 PL. 2025	FINISH OPTIONS	
2			5			CHECKED		DATE	DWG. NO.
3			6						2228

WAUSAU TILE SITE FURNISHINGS

P.O. BOX 1220 WAUSAU, WISCONSIN 54981-0220 800/288-6728
P.O. BOX 907 DUNSMuir, CALIFORNIA 92321 800/251-4638



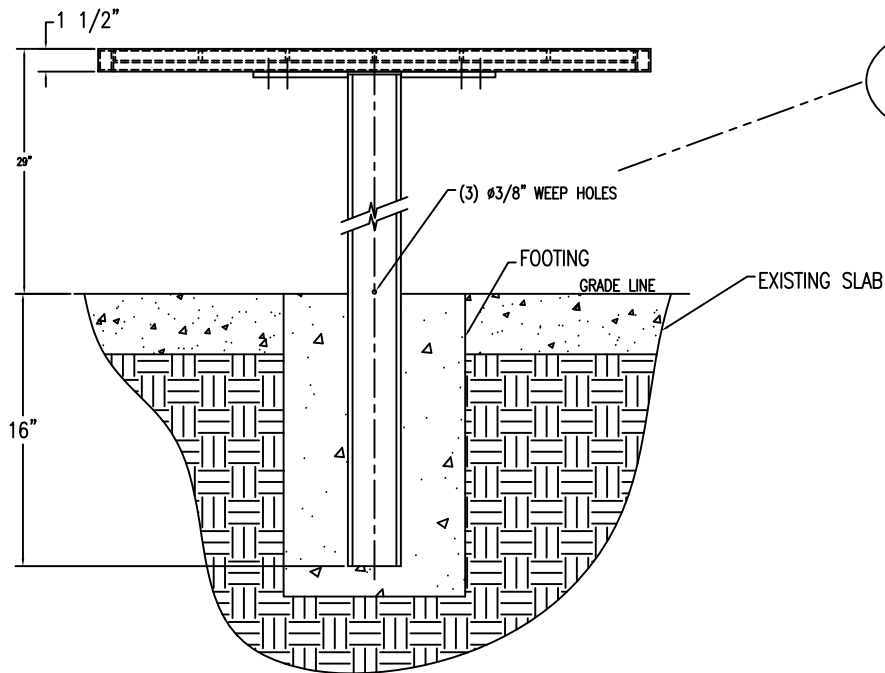
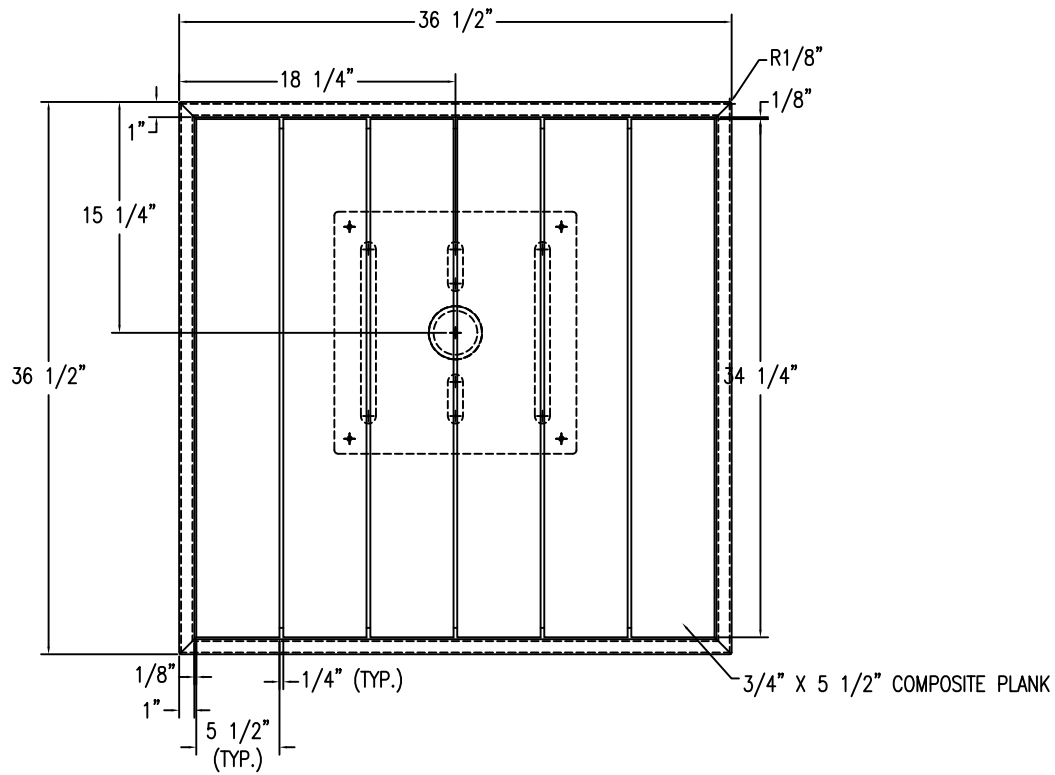
- Size:** 36" Sq. x 29"H (installed overall height)
Weight: 295 Lbs.
Material: Powder coated aluminum frame
 Wood composite table top panels
 Galvanized steel pipe
 (3" SCH-80, 3 1/2" outside diameter pipe)
Features: Inground mount, Handicap
Parts: Hardware kit
- (4) 1/4"-20 x 1" stainless steel screws
 (4) 1/4" stainless steel flat washers
 (4) 1/4" stainless steel lock washers

Powder Coating Colors:

Silk Gray - RAL7044
 Beige Gray - RAL7006
 Bronze
 Black

Composite Wood Colors:

Weathered Wood
 Milwaukee Brown



BURY SO THAT WEEP HOLES ARE JUST ABOVE GRADE

REVISIONS					DRAWN BY	JOB	MATERIAL	
NO.	DATE	BY	NO.	DATE	TITLE	JOB NO.	WEIGHT	
1			4		SCALE	UNLESS OTHERWISE SPECIFIED DIMENSIONS ARE IN INCHES ANGLES SHOWN 2 PL. 2020 3 PL. 2020S	FINISH OPTIONS	
2			5		CHECKED		DATE	DWG. NO.
3			6					1047

WAUSAU TILE SITE FURNISHINGS

P.O. BOX 1220 WAUSAU, WISCONSIN 54981-1220 800/288-6728
P.O. BOX 907 DUNSMuir, CALIFORNIA 92322 800/251-4533



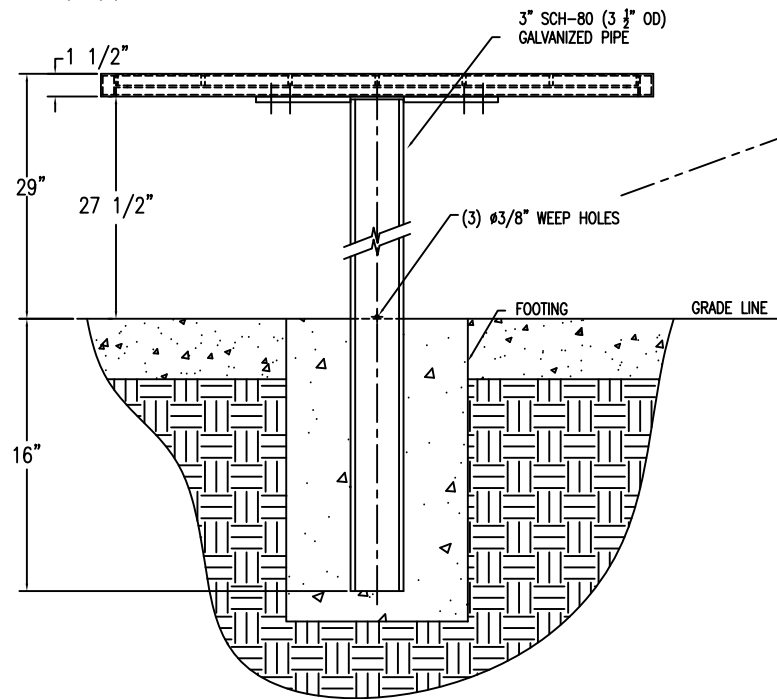
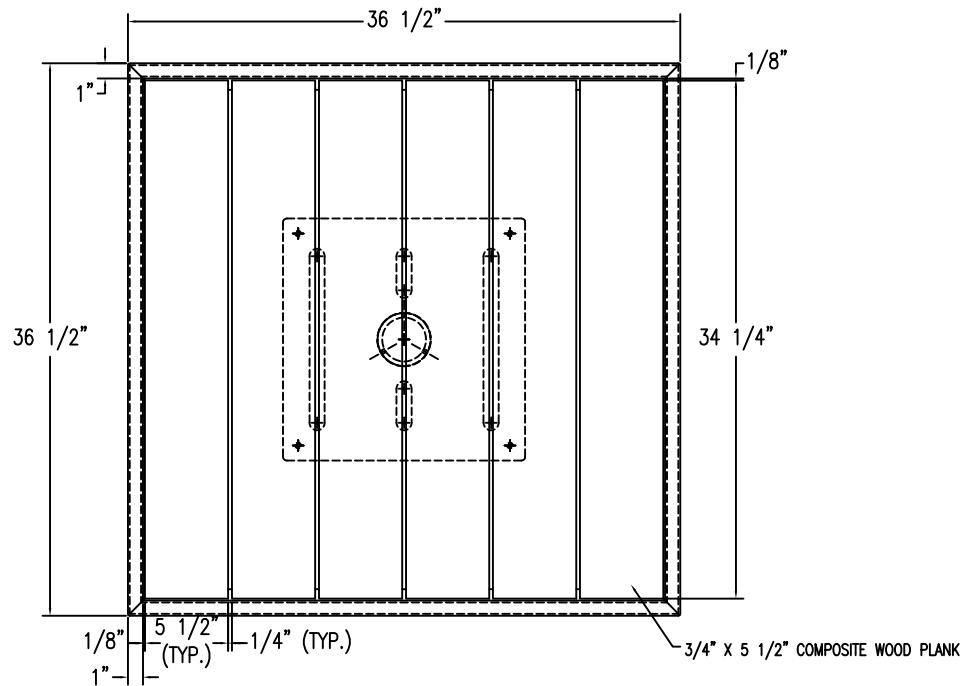
- Size:** 36" Sq. x 29"H (installed overall height)
Weight: 295 Lbs.
Material: Powder coated aluminum frame
 Wood composite table top panels
 Galvanized steel pipe- inground mount
 (3" SCH-80, 3 1/2" outside diameter pipe)
Parts: Hardware kit
- (4) 1/4"-20 x 1" stainless steel screws
 (4) 1/4" stainless steel flat washers
 (4) 1/4" stainless steel lock washers

Powder Coating Colors:

Silk Gray - RAL7044
 Beige Gray - RAL7006
 Bronze
 Black

Composite Wood Colors:

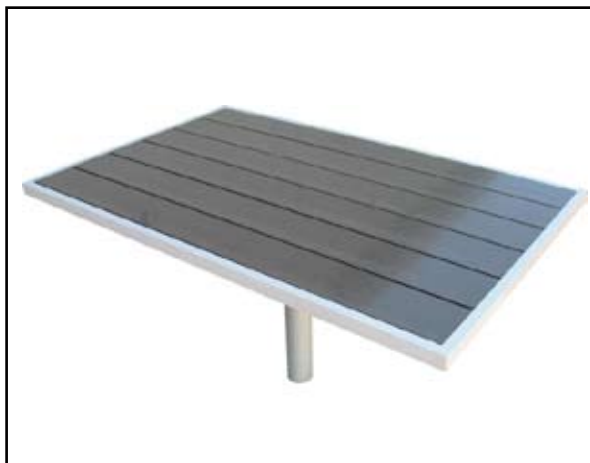
Weathered Wood
 Milwaukee Brown



BURY SO THAT WEEP HOLES ARE JUST ABOVE GRADE

NOTE: FOOTING BY OTHERS
 SOIL CONDITIONS MAY VARY, CONTACT LOCAL GOVERNMENT OFFICE FOR BUILDING CODE IN YOUR AREA.

WAUSAU TILE SITE FURNISHINGS						P.O. BOX 1529 WAUSAU, WISCONSIN 54485-1529 800/288-8728		P.O. BOX 907 DUNSMuir, CALIFORNIA 92323 800/257-4638	
REVISIONS				DRAWN BY		JOB NO.	JOB TITLE	MATERIAL	
NO.	DATE	BY	NO.	DATE	BY	McD's 36" TABLE	IN-GROUND MOUNT	WEIGHT	
1			4					FINISH OPTIONS	
2			5			SCALE	DATE	DWG. NO.	
3			6			CHECKED	UNLESS OTHERWISE SPECIFIED DIMENSIONS ARE IN INCHES	2 PL. 20x8	3 PL. 2x10s



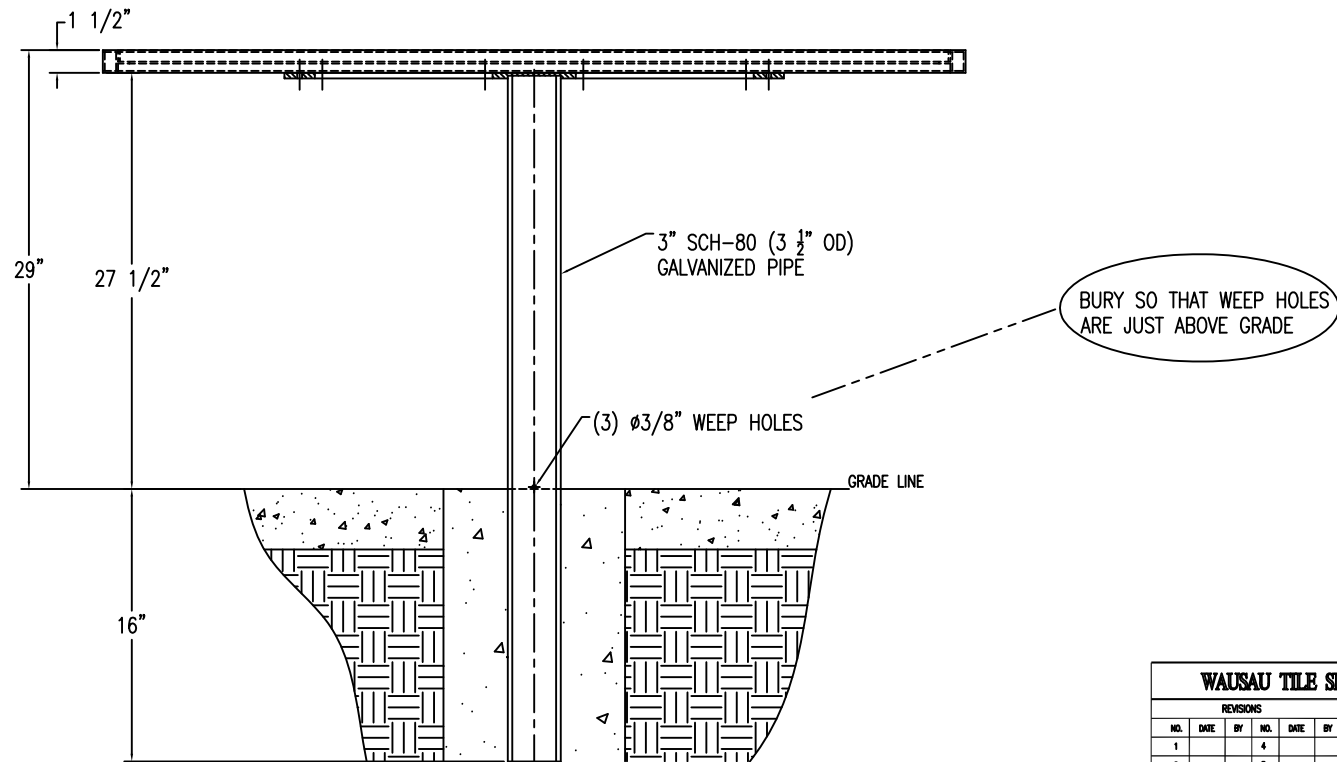
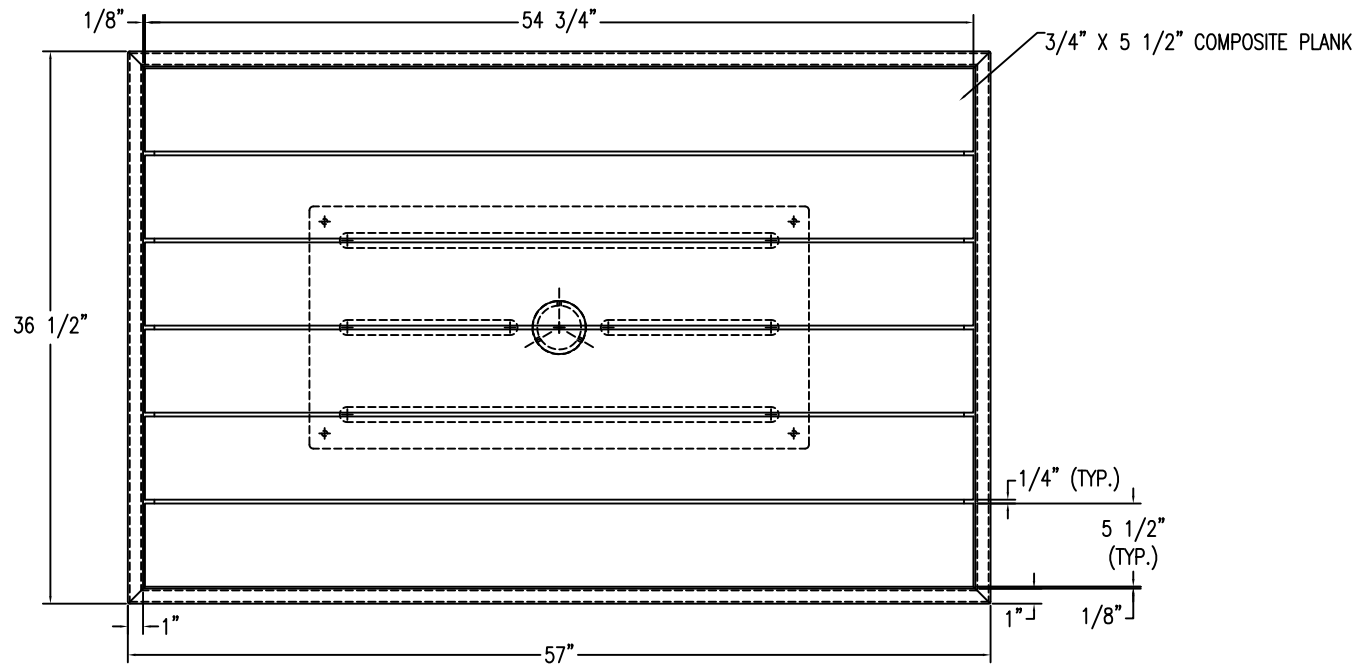
- Size:** 57" x 36" x 29"H (installed overall height)
Weight: 330 Lbs.
Material: Powder coated aluminum frame
 Wood composite table top panels
 Galvanized steel pipe- inground mount
 (3" SCH-80, 3 1/2" outside diameter pipe)
- Parts:** Hardware kit
- (4) 1/4"-20 x 1" stainless steel screws
 - (4) 1/4" stainless steel flat washers
 - (4) 1/4" stainless steel lock washers

Powder Coating Colors:

Silk Gray - RAL7044
 Beige Gray - RAL7006
 Bronze
 Black

Composite Wood Colors:

Weathered Wood
 Milwaukee Brown



NOTE: FOOTING BY OTHERS
 SOIL CONDITIONS MAY VARY, CONTACT
 LOCAL GOVERNMENT OFFICE FOR
 BUILDING CODE IN YOUR AREA.

REVISIONS					DRAWN BY	JOB	MATERIAL		
NO.	DATE	BY	NO.	DATE	BY	TITLE	JOB NO.	WEIGHT	
1			4			McD's 57" X 36" TABLE			
2			5			IN-GROUND MOUNT			
3			6			CHECKED	DATE	FINISH OPTIONS	
							UNLESS OTHERWISE SPECIFIED DIMENSIONS ARE IN INCHES	DATE	FINISH OPTIONS
							2 PL. 2000 3 PL. 5000	DATE	DWG. NO. 1034

WAUSAU TILE SITE FURNISHINGS

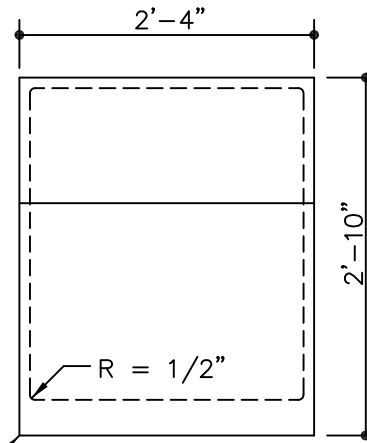
P.O. BOX 1220 WAUSAU, WISCONSIN 54981-1220 800/298-6728
 P.O. BOX 907 DUNSMuir, CALIFORNIA 92323 800/251-4633



Size: 28" x 34 x 32" H
Weight: 1,160 Lbs.
Material: Reinforced concrete
Reinforcing: 1/4" Dia. steel rebar

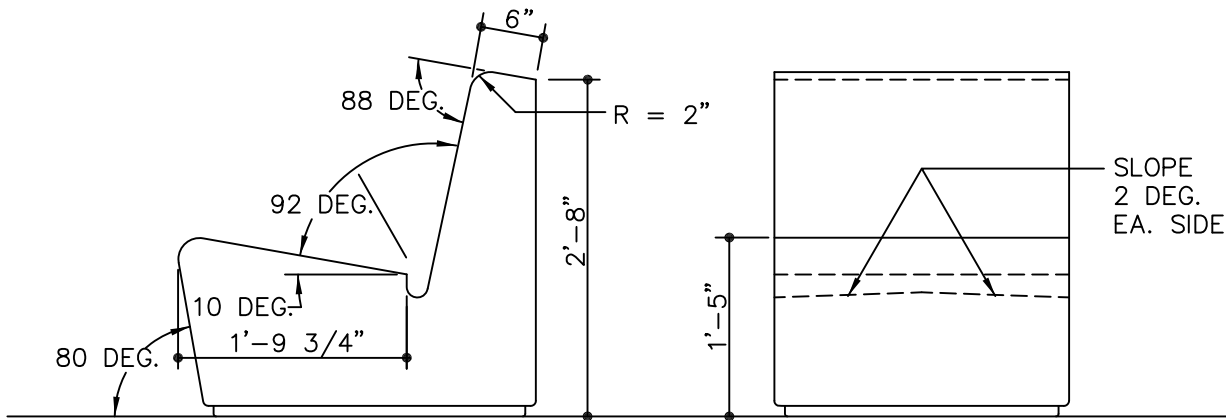
Acid Wash Finish:

White



ALL OUTSIDE
CORNERS R = 1/4"

Plan



Side Elevation

Front Elevation

WAUSAU TILE SITE FURNISHINGS						P.O. BOX 1520 WAUSAU, WISCONSIN 54981-1520 800/288-6728		P.O. BOX 907 DUNSMuir, CALIFORNIA 92321 800/251-4633		
REVISIONS					DRAWN BY	L.B.E.	JOB	MATERIAL		
NO.	DATE	BY	NO.	DATE	TITLE	JOB NO.	WEIGHT		FINISH	
1			4		SCALE		UNLESS OTHERWISE SPECIFIED		DATE	
2			5		CHECKED		DIMENSIONS ARE IN INCHES		FINISH	
3			6				2 PL. 20x20 3 PL. 30x30		DWG. NO.	

TF5039



Size: 25" Dia. x 15" H

Weight: 27 Lbs.

Material: LLDPE Plastic, textured

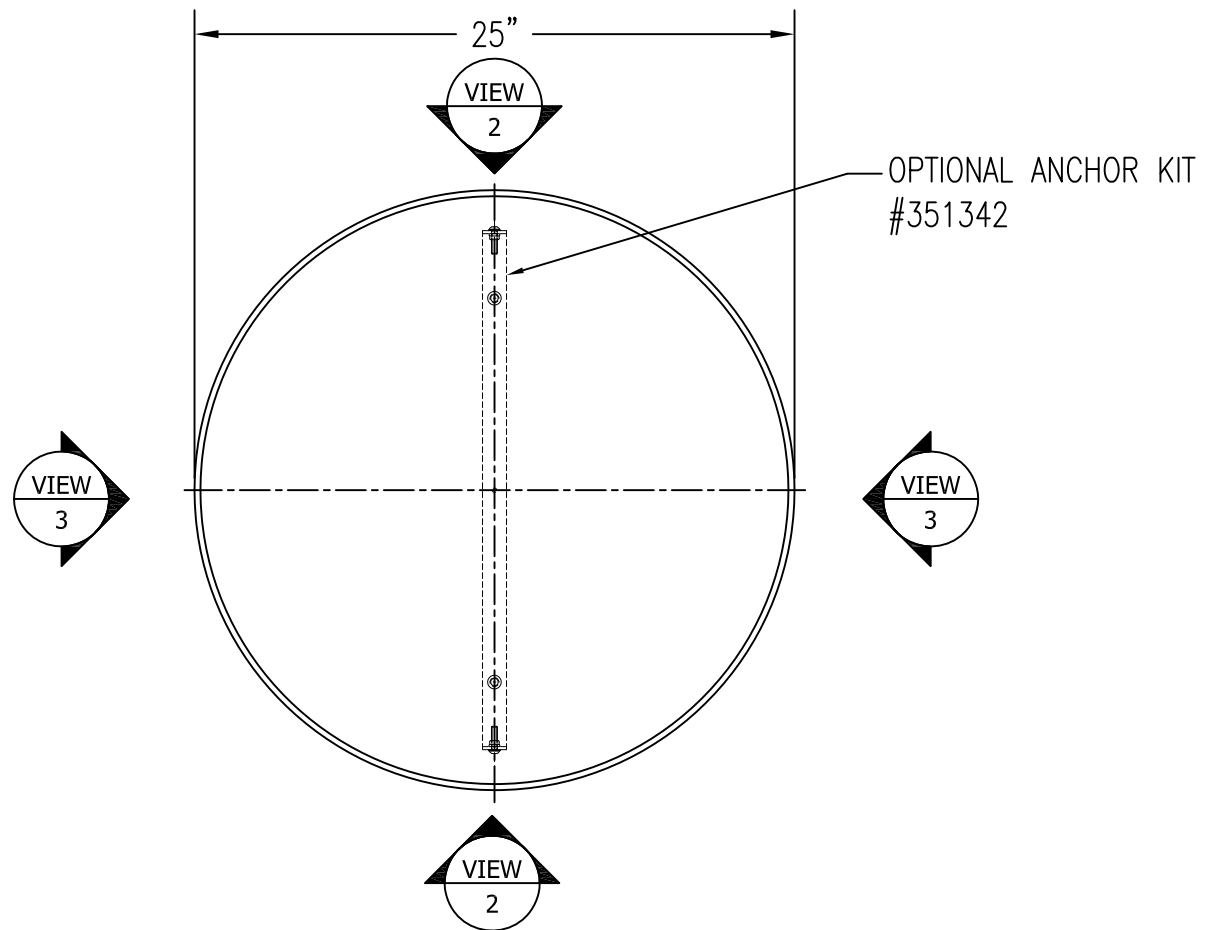
Other: Optional anchoring kit available
Optional concrete plug, 115 Lbs

Features: Flexible
Durable
UV Stable

Plastic Colors:

Briarwood Gray	#116
Sun Yellow	#115
Mustard Yellow	#120
Mandarin Orange	#16
Startling Orange	#117
Eccentric Lime	#118
Utah Sky Blue	#122
Ruby Red	#121

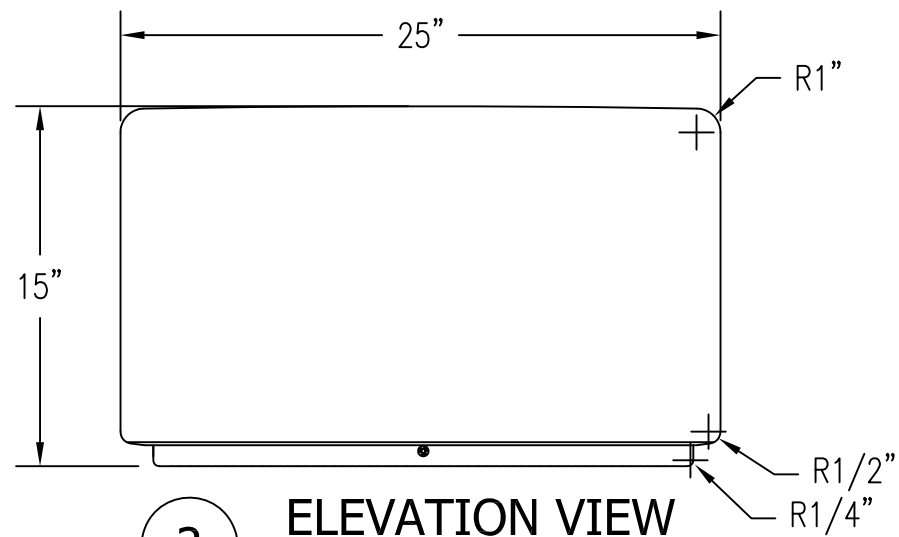




1 TOP VIEW
Scale: 1/8" = 1"



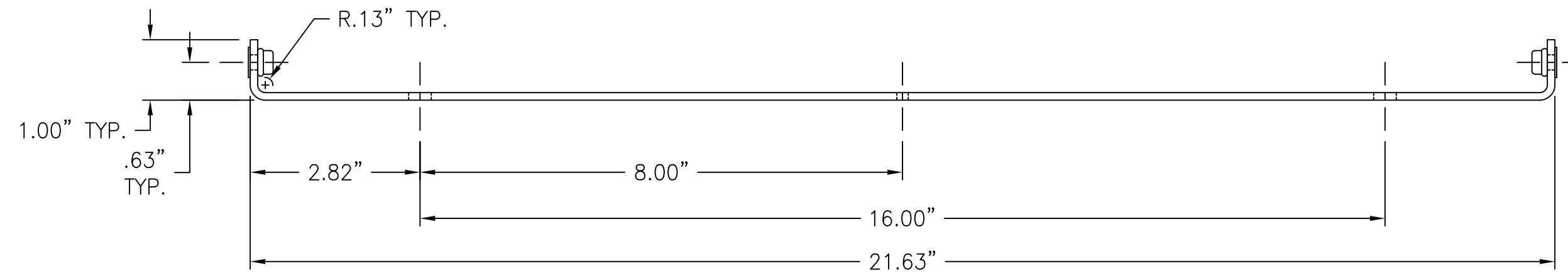
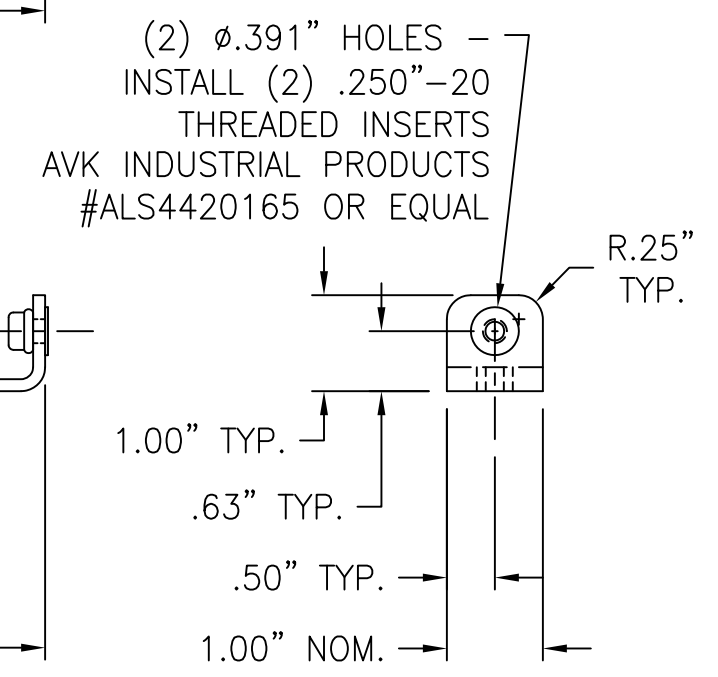
3 ELEVATION VIEW
Scale: 1/8" = 1"



2 ELEVATION VIEW
Scale: 1/8" = 1"

REVISION	DESCRIPTION	DRAWN BY	DATE
4			
3			
2			
1			

WAUSAU TILE		P.O. BOX 1520 WAUSAU, WISCONSIN 54402-1520 800/388-8728 P.O. BOX 967 BANNING, CALIFORNIA 92220 877/849-5696	
DRAWN BY	JPZ	JOB	MATERIAL PLASTIC
JOB NO.		LOCATION	WEIGHT
SCALE	AS NOTED	UNLESS OTHERWISE SPECIFIED DIMENSIONS ARE IN INCHES TOLERANCES: ±1/8"	DATE 6/10/11 ITEM NO. 1000
FINISH OPTIONS			DWG. NO. 1 OF 1



MATERIAL: .125" x 1.00" STEEL FLAT BAR
- ZINC WITH YELLOW DICHROMATE PLATED

WAUSAU TILE

P.O. BOX 1520 WAUSAU, WISCONSIN 54402-1520 800/388-8728
E-MAIL: WTILE@WAUSAUTILE.COM
WEB SITE: WWW.WAUSAUTILE.COM

DRAWN BY	M JOHNSON	TITLE	1.00" X 21.63" MOUNTING BRACKET	MATERIAL	-
JOB NO.		JOB		WEIGHT	
SCALE	HALF	UNLESS OTHERWISE SPECIFIED DIMENSIONS ARE IN INCHES ANGLES \pm 0.5° FRACTIONS \pm 1/64" 2 PL \pm 0.01 3 PL \pm 0.005	DATE	5/24/11	FINISH OPTIONS
REV		NAME		B	DWG. NO. 351342

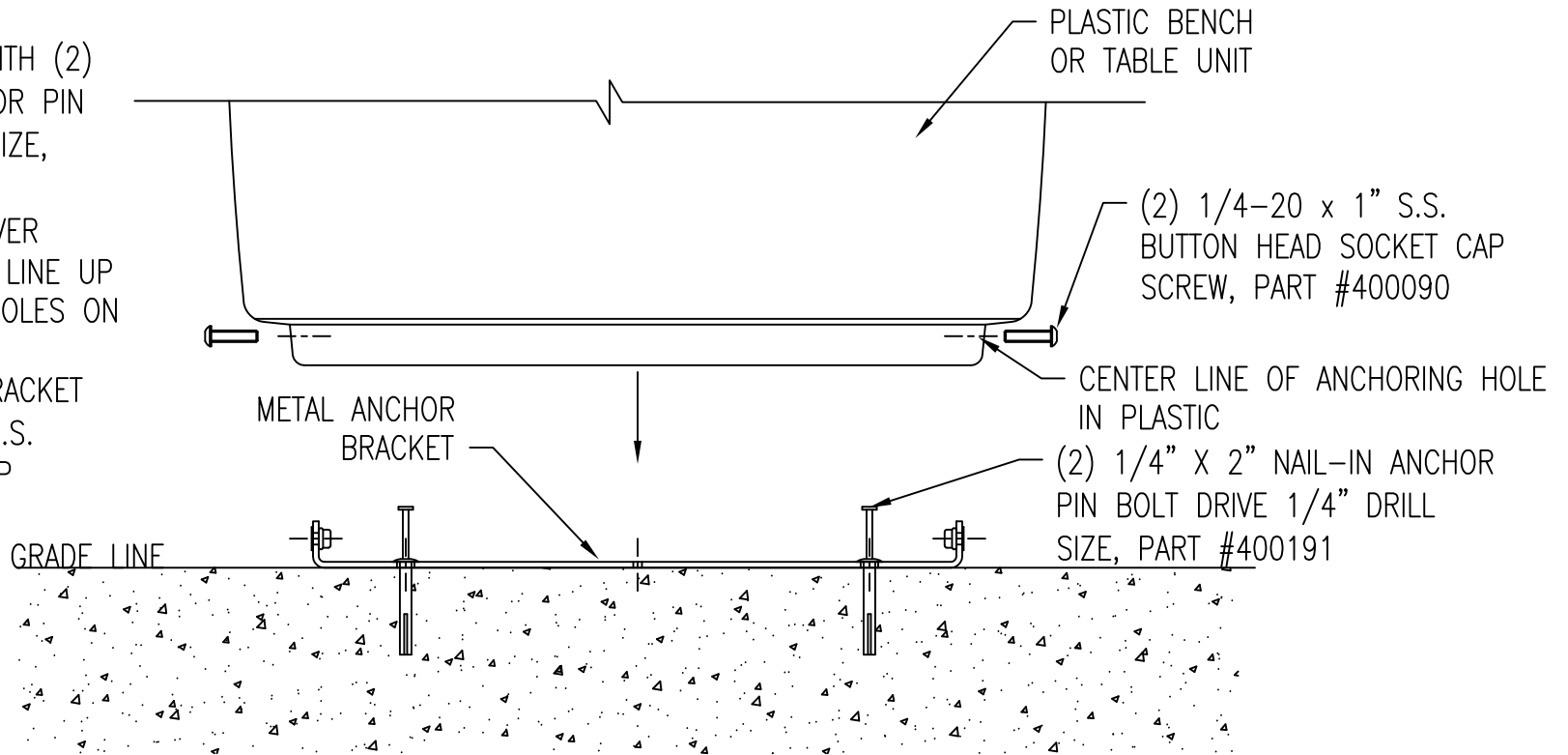
REV	DESCRIPTION	NAME	DATE
1	-	-	-

INSTALLATION INSTRUCTIONS:

1) ATTACH METAL ANCHOR BRACKET TO CONCRETE WITH (2) 1/4" x 2" NAIL-IN ANCHOR PIN BOLT DRIVE 1/4" DRILL SIZE, PART #400191

2) SLIDE PLASTIC UNIT OVER BRACKET, MAKE SURE TO LINE UP HOLES IN PLASTIC WITH HOLES ON BRACKET.

3) ATTACH PLASTIC TO BRACKET WITH (2) 1/4-20 X 1" S.S. BUTTON HEAD SOCKET CAP SCREWS, PART #400090



1

INSTALLATION DETAIL FOR PLASTIC UNITS 1000, 2401, 2402 & 2403

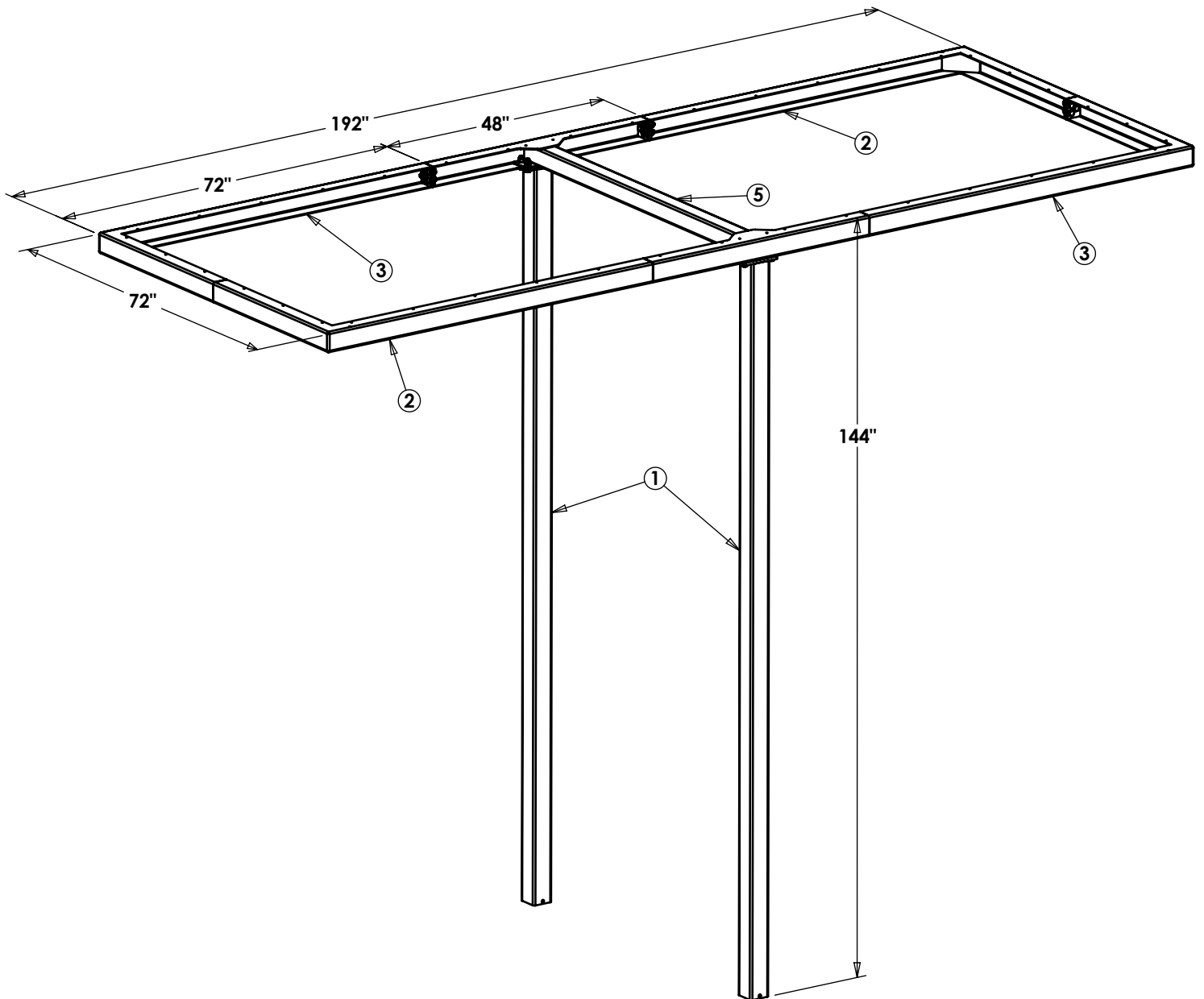
Scale: 1/4" = 1'

REVISION	DESCRIPTION	BY	DATE
4			
3			
2			
1			

WAUSAU TILE		P.O. BOX 1520 WAUSAU, WISCONSIN 54402-1520 800/388-8728 E-MAIL: WTILE@WAUSAUTILE.COM WEB SITE: WWW.WAUSAUTILE.COM	
DRAWN BY PAW	JOB	MATERIAL	
JOB NO.	LOCATION	WEIGHT	
SCALE AS NOTED	UNLESS OTHERWISE SPECIFIED DIMENSIONS ARE IN INCHES TOLERANCES: ±1/8"	DATE 6/10/11	ITEM NO.
FINISH OPTIONS			DWG. NO. 1 OF 1

PARTS LIST AND IDENTIFICATION

ITEM NO.	PART NUMBER	DESCRIPTION	Default /QTY.
1	800297	WELDMENT POST	2
2	800300	WELDMENT SHADE SECTION, LH	2
3	800299	WELDMENT SHADE SECTION, RH	2
4	400280	16-FT SHADE SECTION KIT	2
5	800293	WELDMENT 16-FT "H" ASSY	1



Contact **Wausau Tile, Inc.** Phone: 866-482-7138 Fax: 715-355-4627 Email: wtile@wausautile.com

DOCUMENT NUMBER
3316

REV NUM
REV 1

REV DATE
10-03-2012

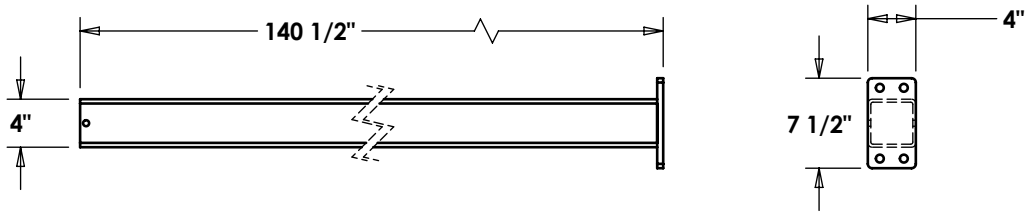
TITLE

3316 - SHADE STRUCTURE 6-FT X 16-FT

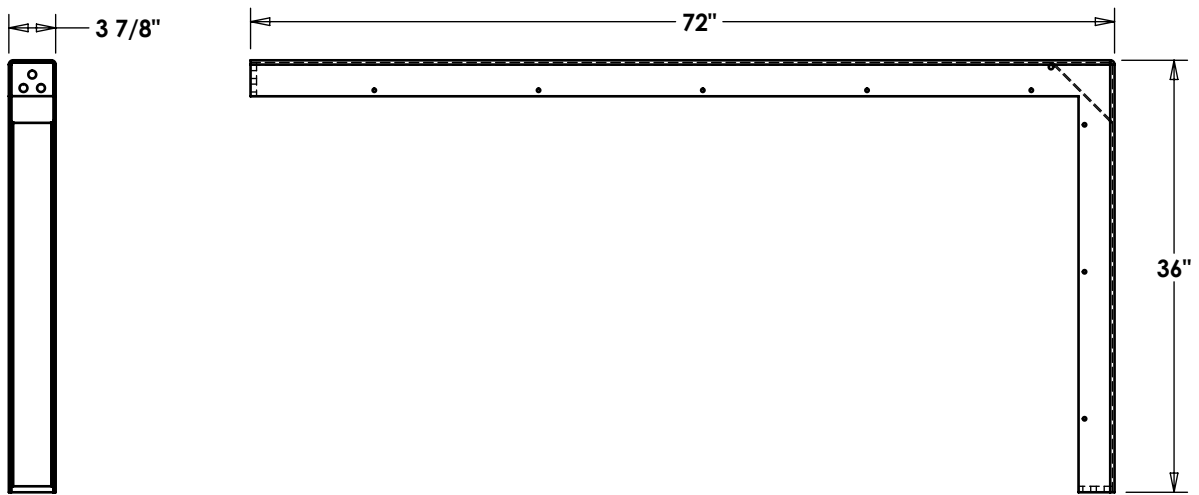
PAGE NUMBER

1 OF 7

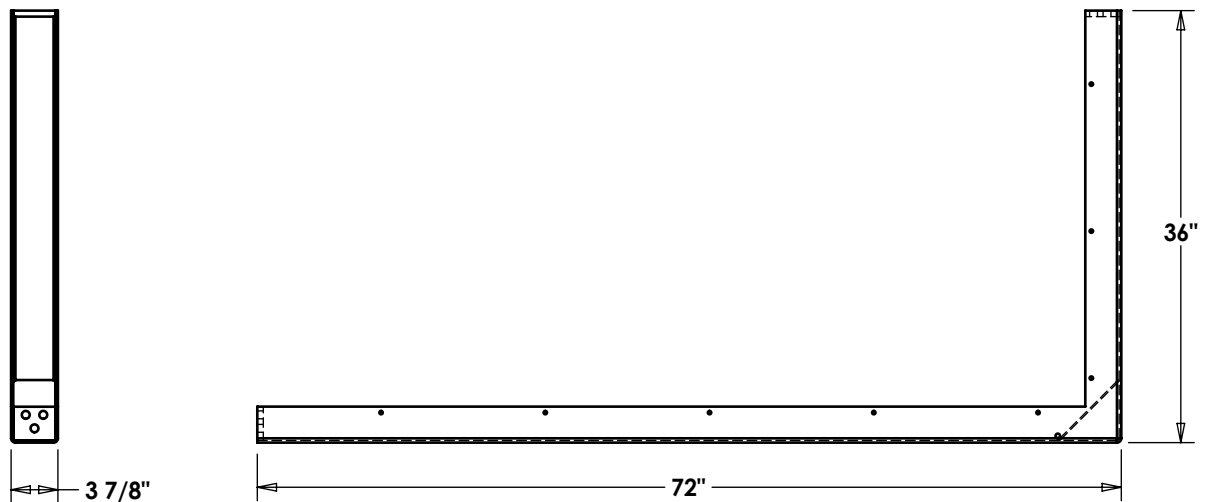
ITEM #1, WELDMENT POST



ITEM #2, WELDMENT SHADE SECTION, LH

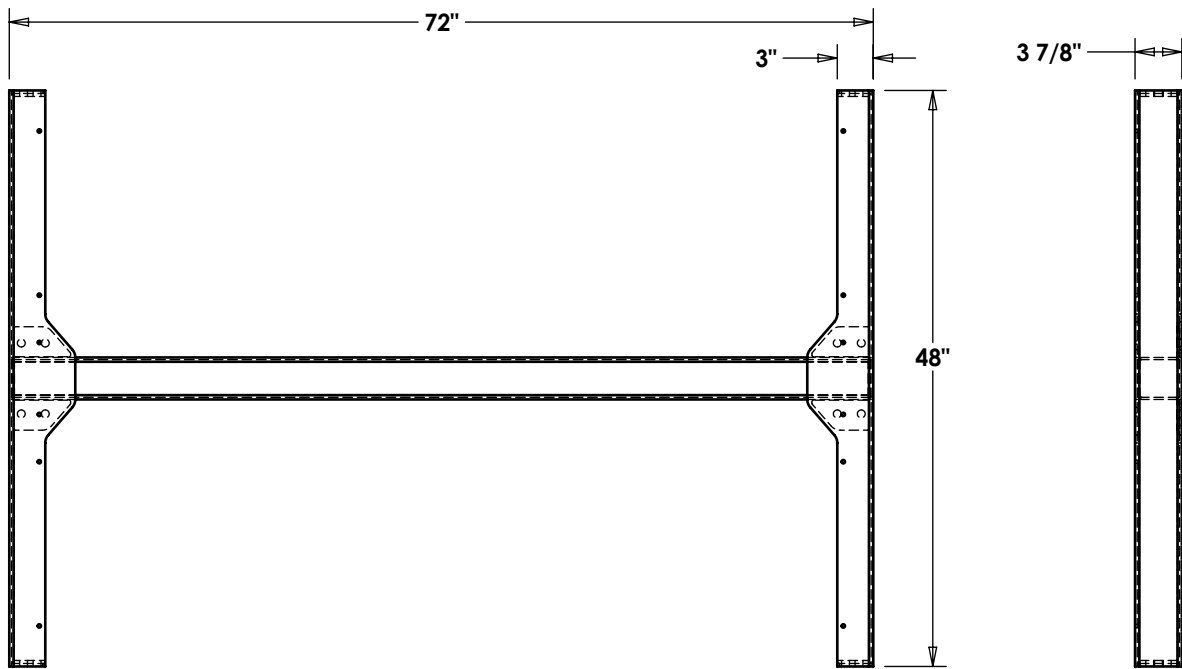


ITEM #3, WELDMENT SHADE SECTION, RH



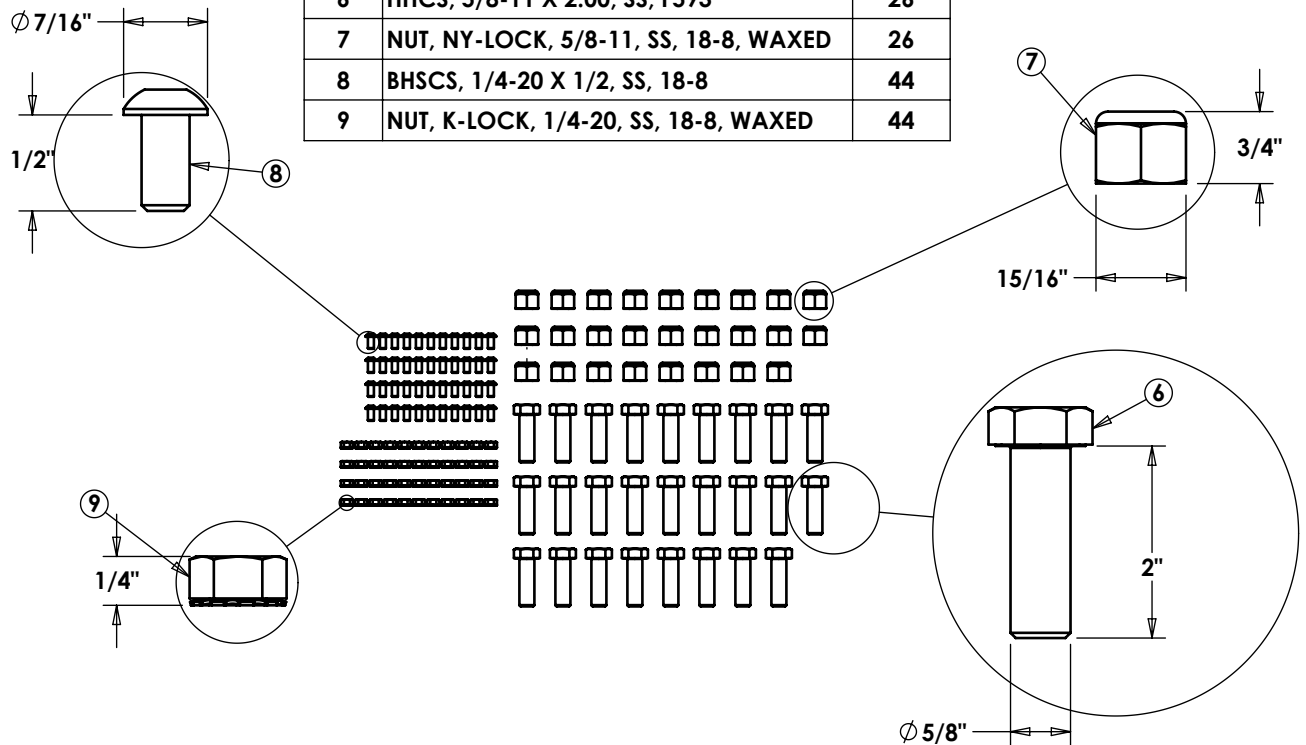
Contact **Wausau Tile, Inc.** Phone: 866-482-7138 Fax: 715-355-4627 Email: wtile@wausautile.com

ITEM #4, WELDMENT 16-FT END SECTION



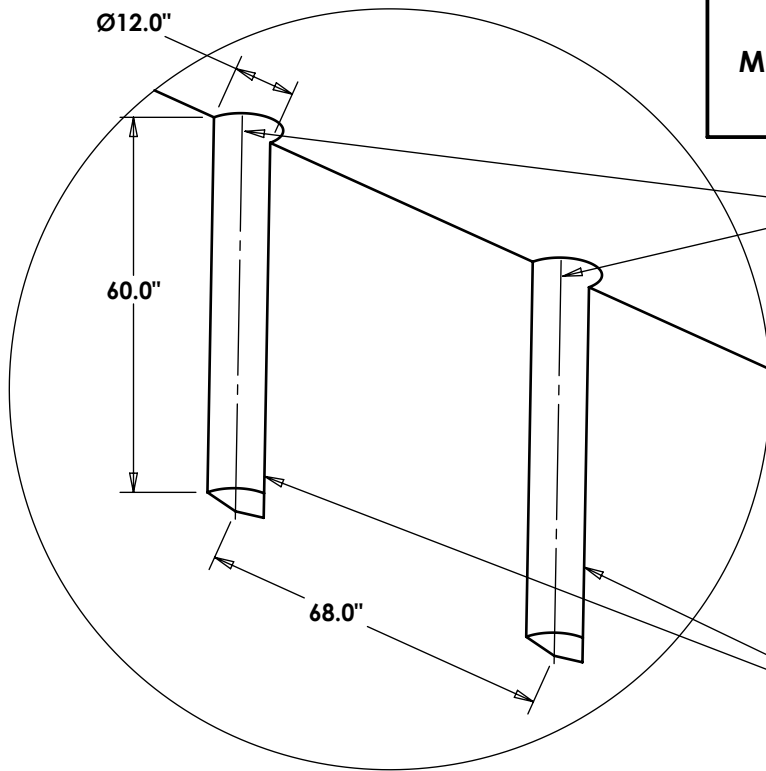
ITEM #5, 16-FT SHADE SECTION KIT

ITEM	DESCRIPTION	QTY
6	HHCS, 5/8-11 X 2.00, SS, F593	26
7	NUT, NY-LOCK, 5/8-11, SS, 18-8, WAXED	26
8	BHSCS, 1/4-20 X 1/2, SS, 18-8	44
9	NUT, K-LOCK, 1/4-20, SS, 18-8, WAXED	44



Contact **Wausau Tile, Inc.** Phone: 866-482-7138 Fax: 715-355-4627 Email: wtile@wausatile.com

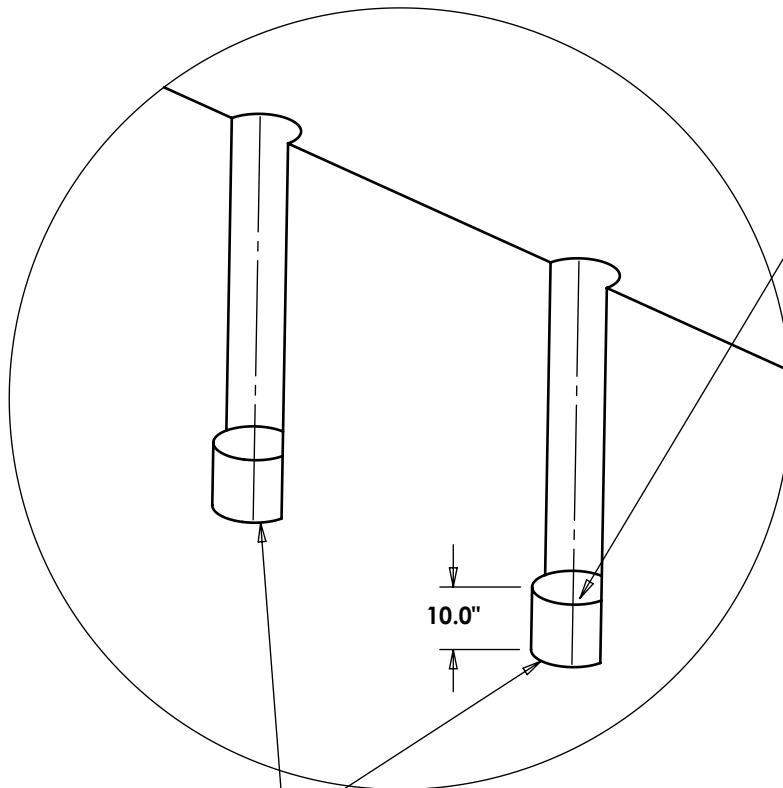
**IMPORTANT
HOLE DEPTH AND FOOTING THICKNESS ARE
MINIMUMS. PLEASE CHECK LOCAL REGULATIONS
PRIOR TO START OF PROJECT.**



(STEP 1) LOCATE SITE FOR (2) POST HOLES.

- a) MARK LOCATION
- b) POST HOLES ARE SPACED APART $68.0''$ ON CENTER.

(STEP 2) AUGER (2) $\text{Ø}12.0''$ HOLES $68.0''$ APART BY $60.0''$ DEEP.



(STEP 3) POUR CONCRETE FOOTINGS.

- a) USE GREY PORTLAND CEMENT TYPE 1 OR 3, MIN 4,000 PSI.
- b) MIX CONCRETE TO MANUFACTURER'S SPECIFICATIONS.
- c) ALLOW CONCRETE TO CURE TO MANUFACTURER'S SPECIFICATIONS.

FOOTINGS

Contact **Wausau Tile, Inc.** Phone: 866-482-7138 Fax: 715-355-4627 Email: wtile@wausautile.com

DOCUMENT NUMBER
3316

REV NUM
REV 1

REV DATE
10-03-2012

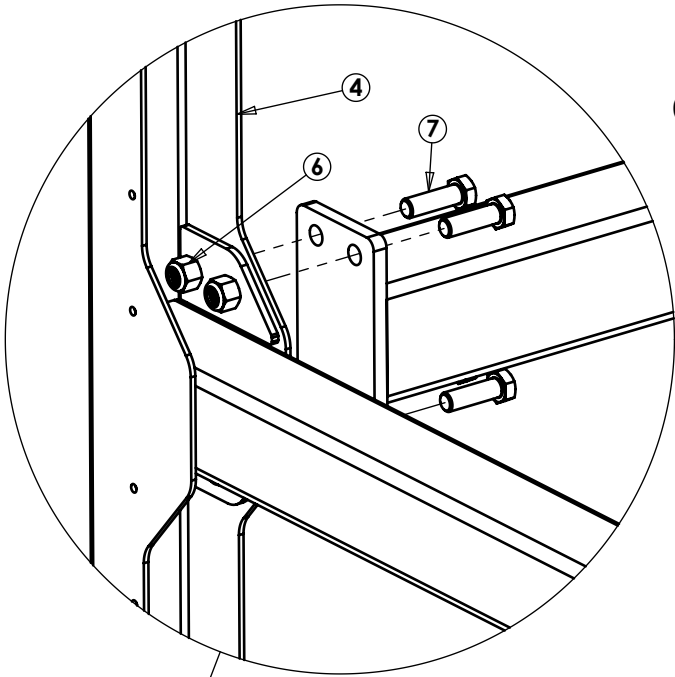
TITLE

3316 - SHADE STRUCTURE 6-FT X 16-FT

PAGE NUMBER

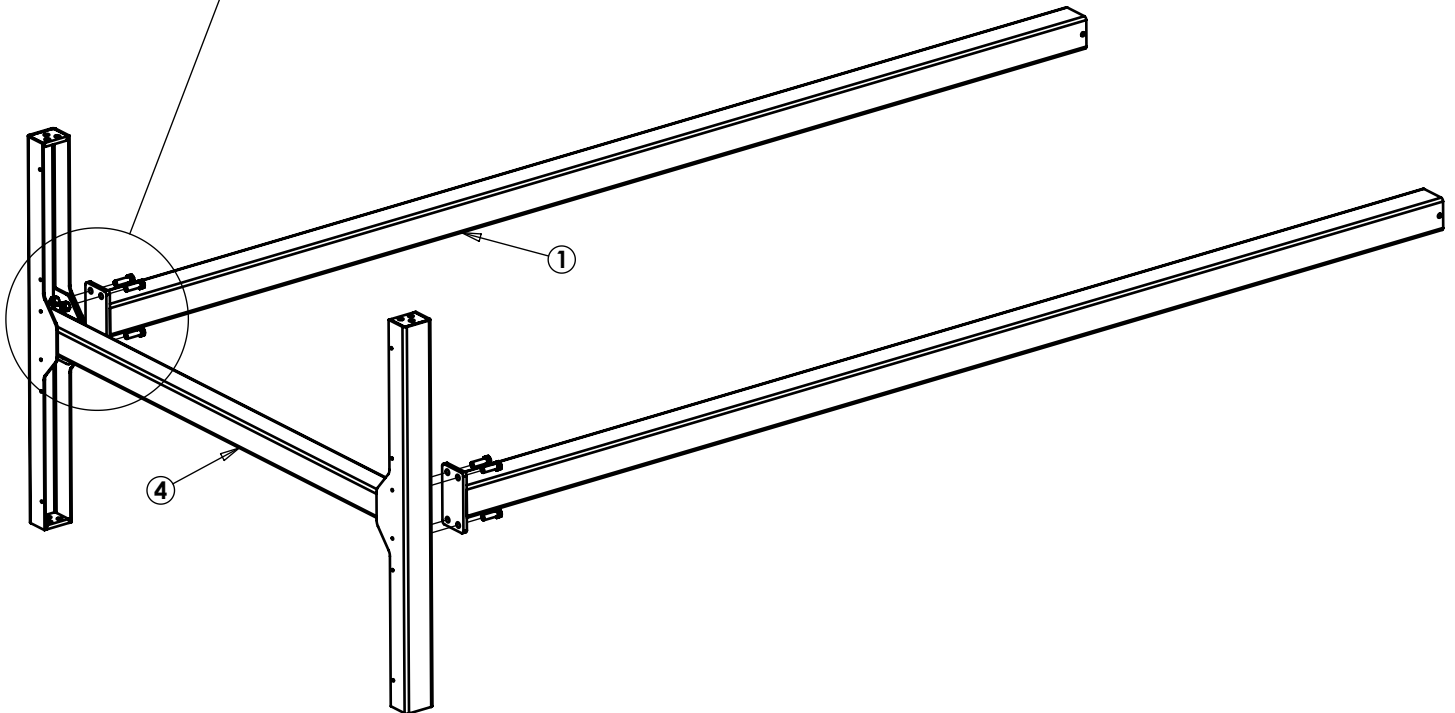
4 of 7

ITEM	PART NUMBER	DESCRIPTION	QTY
1	800297	WELDMENT POST	2
4	800293	WELDMENT 16-FT "H" ASSY	1
6		HHCS, 5/8-11 X 2.00, SS, F593	8
7		NUT, K-LOCK, 1/4-20, SS, 18-8, WAXED	8



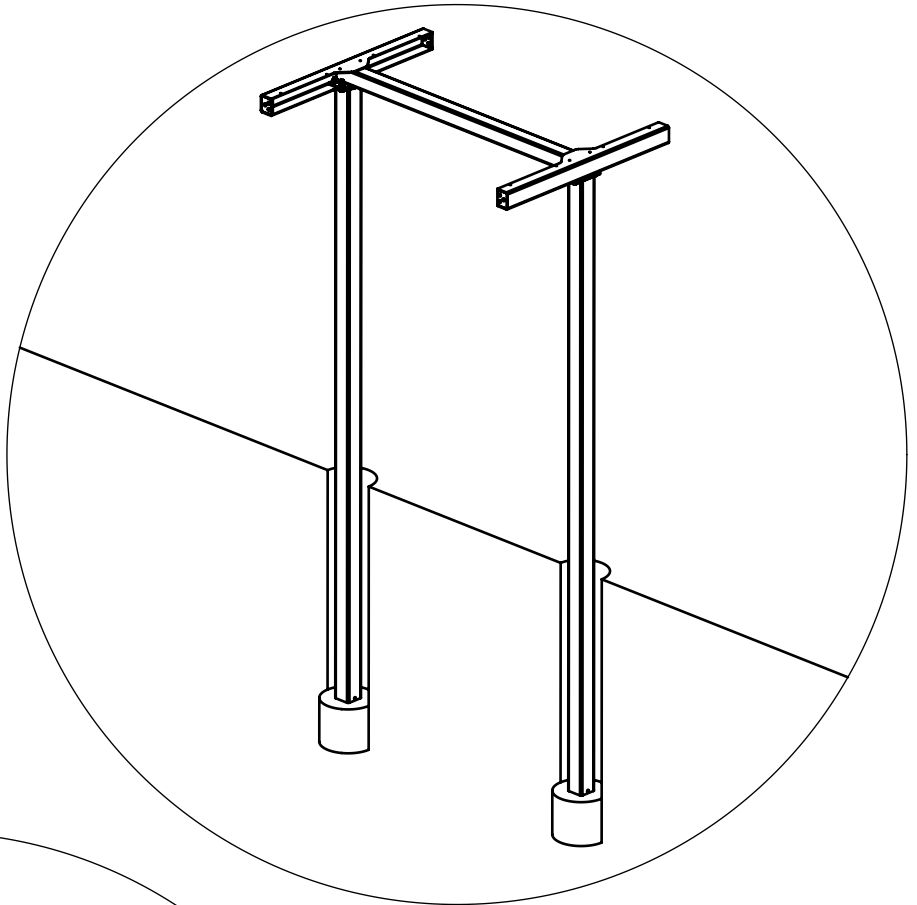
(STEP 4) ON A FLAT SURFACE BEGIN ASSEMBLY OF THE FRAME

- a) PUT CARDBOARD DOWN OR SIMILAR MATERIAL. THIS IS TO PREVENT SCRATCHING OF THE PAINTED SURFACE.
- b) LAY OUT FRAME ON CARDBOARD.
- c) ATTACH ITEM #1 TO ITEM #4 AND SECURE USING THE BOLT AND NYLOCK NUT. USE (4) BOLTS AND NUTS TO SECURE EACH POST TO THE END SECTION.

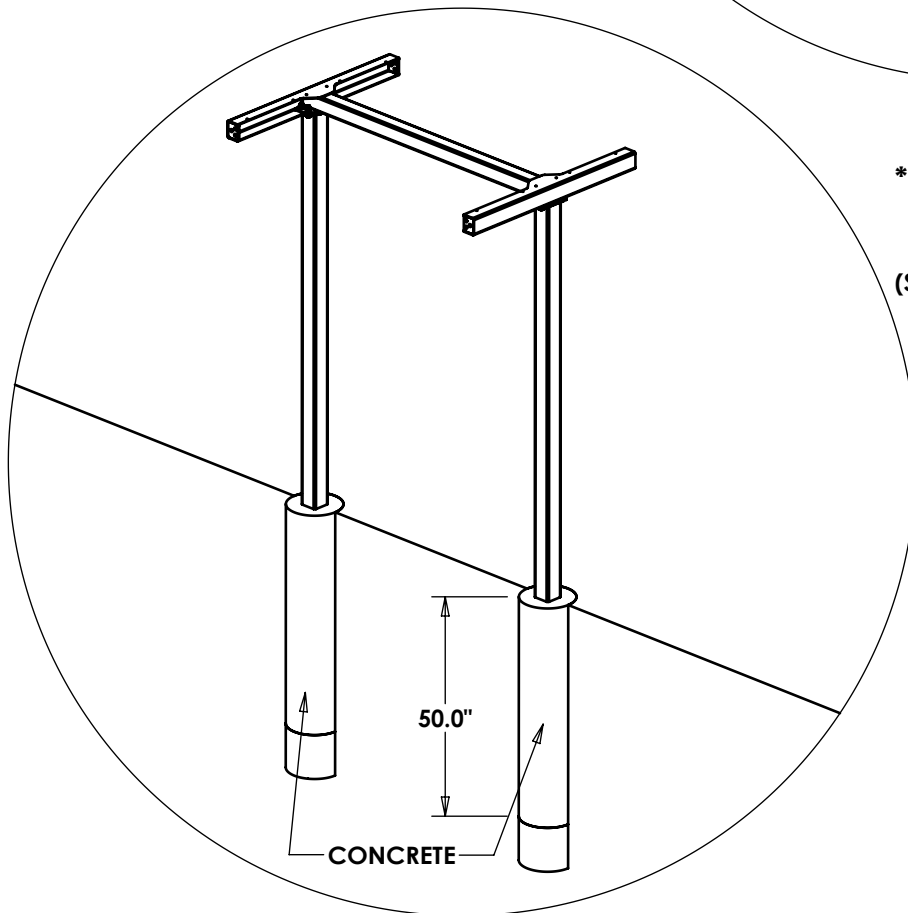


Contact **Wausau Tile, Inc.** Phone: 866-482-7138 Fax: 715-355-4627 Email: wtile@wausautile.com

(STEP 5) CENTER FRAME ON FOOTINGS.



(STEP 6) LEVEL AND SQUARE ASSEMBLY.



**** Installation of Steel Reinforcement for concrete is designed by others. ****

(STEP 7) FILL 50" OF HOLE WITH CEMENT MIXTURE. RE-CHECK POSITION WITH A LEVEL. MAKE ADJUSTMENTS IF NECESSARY.

a) ALLOW CONCRETE TO CURE TO MANUFACTURER'S SPECIFICATIONS.

Contact **Wausau Tile, Inc.** Phone: 866-482-7138 Fax: 715-355-4627 Email: wtile@wausautile.com

DOCUMENT NUMBER
3316

REV NUM
REV 1

REV DATE
10-03-2012

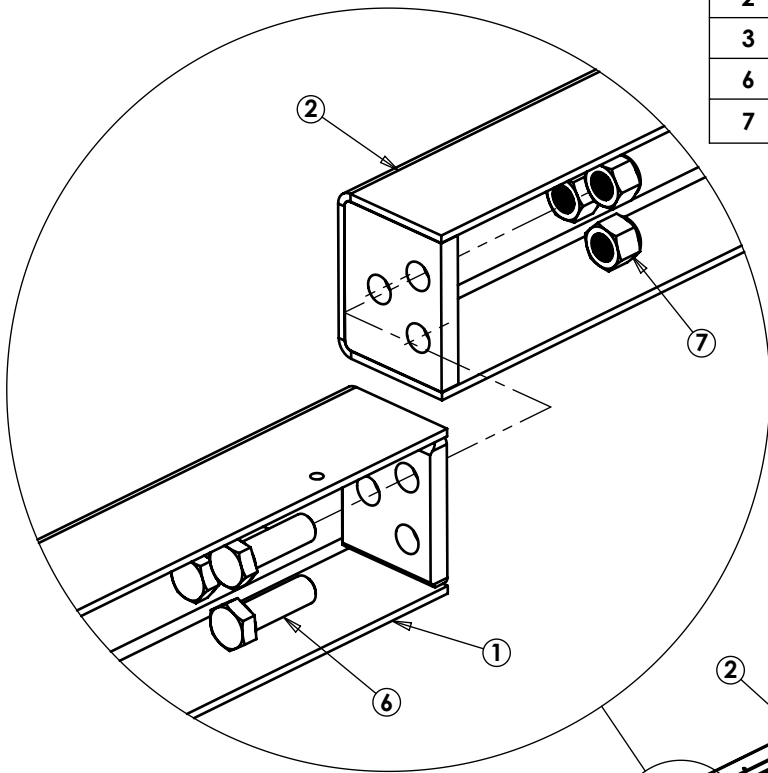
TITLE

3316 - SHADE STRUCTURE 6-FT X 16-FT

PAGE NUMBER

6 of 7

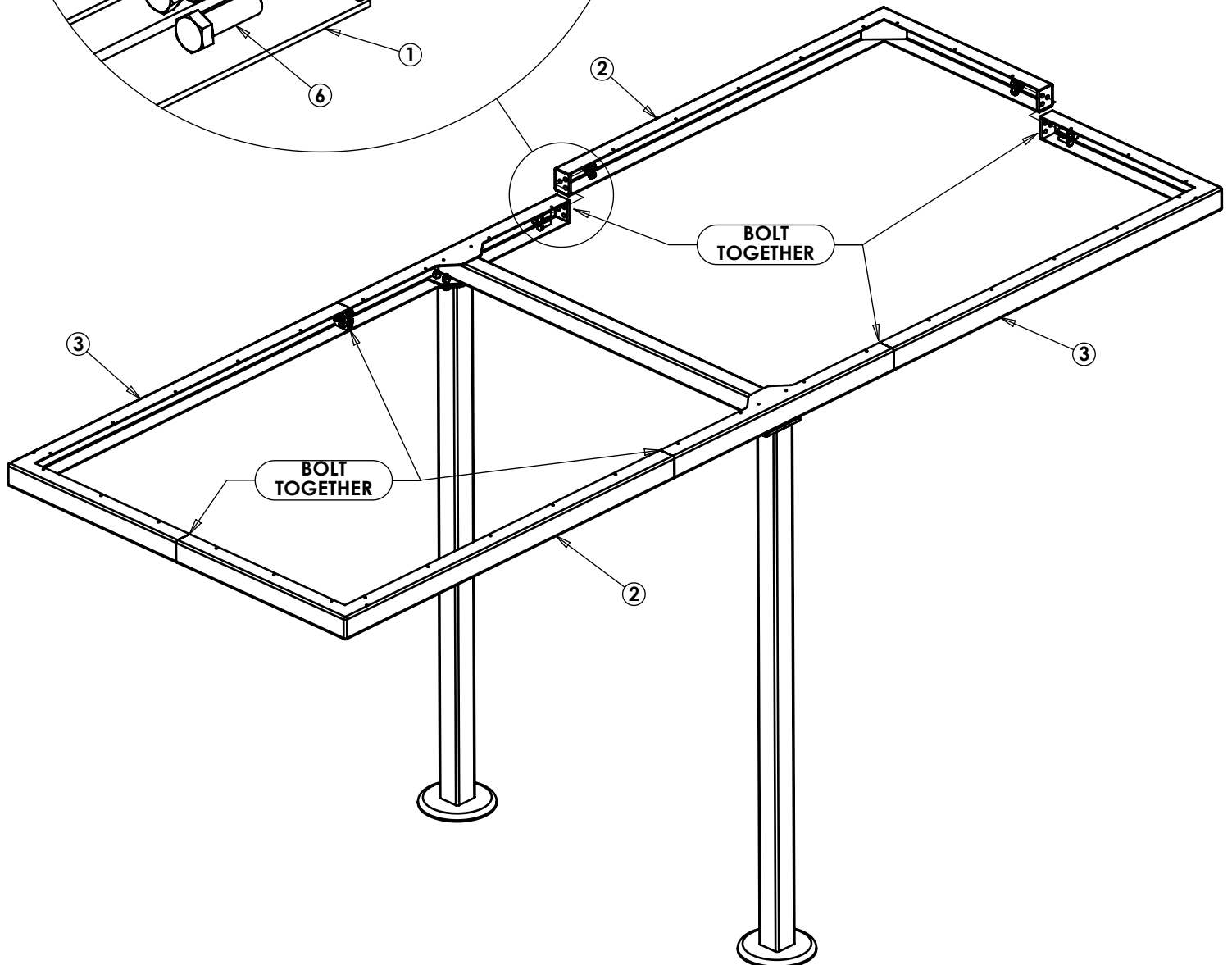
ITEM	PART NUMBER	DESCRIPTION	QTY
2	800300	WELDMENT SHADE SECTION, LH	2
3	800299	WELDMENT SHADE SECTION, RH	2
6		HHCS, 5/8-11 X 2.00, SS, F593	18
7		NUT, NY-LOCK, 5/8-11, SS, 18-8, WAXED	18



(STEP 8) USING HEX BOLT AND NY-LOCK NUT ASSEMBLE ITEMS #2 AND #3 TO FIX STRUCTURE.

(STEP 9) ATTACH SHADE SCREEN WITH THE INSTRUCTIONS PROVIDED WITH SCREEN.

**** TORQUE ALL 5/8 STRUCTURAL BOLTS TO 50 FOOT POUNDS****



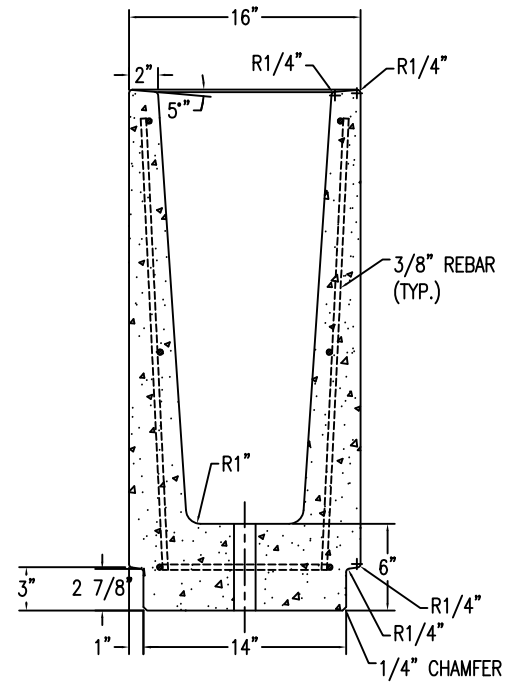
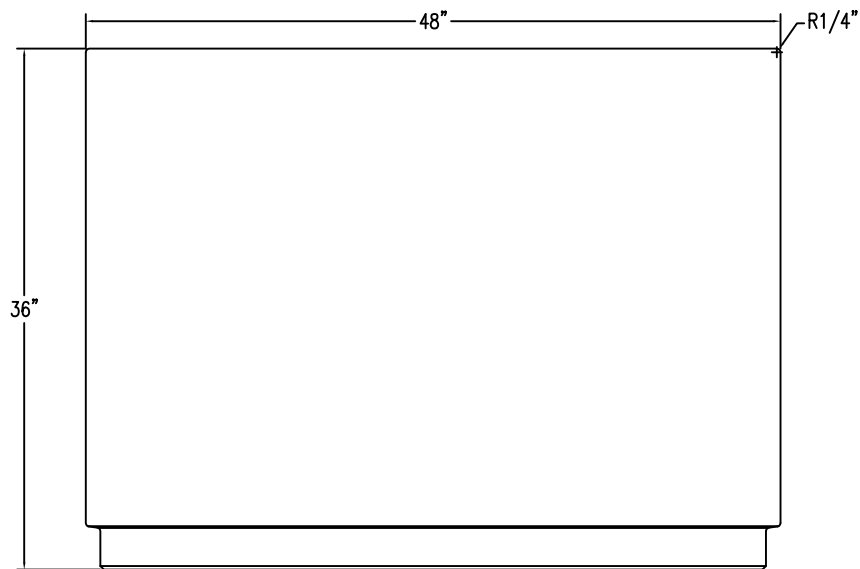
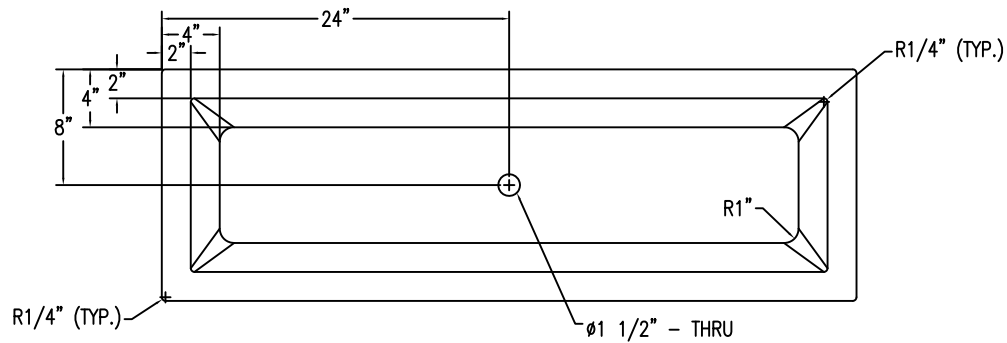
Contact **Wausau Tile, Inc.** Phone: 866-482-7138 Fax: 715-355-4627 Email: wtile@wausautile.com



Size: 48" L x 16" W x 36" H
Weight: 1325 Lbs.
Capacity: 7.3 cubic ft/ .27 cubic yds
Material: Reinforced concrete
Reinforcing: 3/8" Dia. steel rebar

Acid Wash Finish:

White



WAUSAU TILE SITE FURNISHINGS						P.O. BOX 1520 WAUSAU, WISCONSIN 54981-1520 800/298-4728 P.O. BOX 907 DUNSMuir, CALIFORNIA 92322 800/257-4535		
REVISIONS			DRAWN BY		JOB		MATERIAL	
NO.	DATE	BY	NO.	DATE	BY	TITLE	JOB NO.	WEIGHT
1			4			SCALE	1/8	1,325 LBS.
2			5			CHECKED		FINISH OPTIONS
3			6					DWG. NO. TF4356

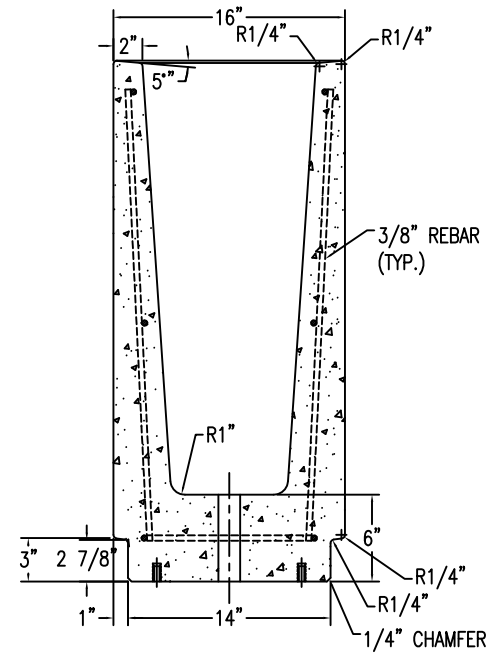
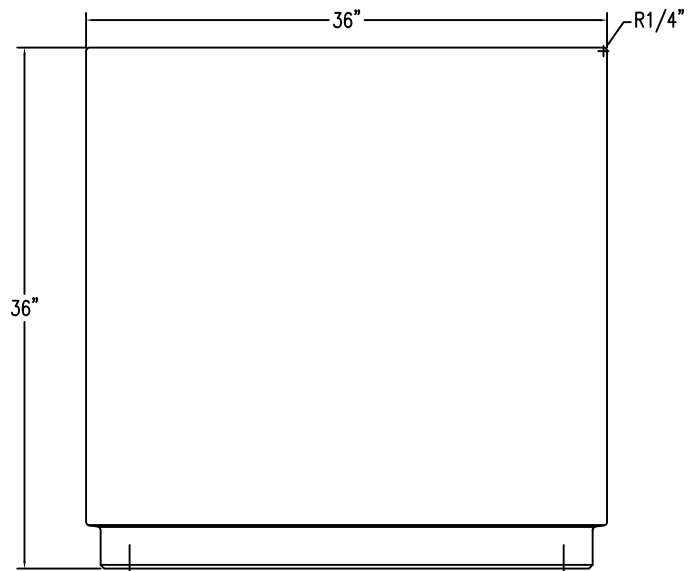
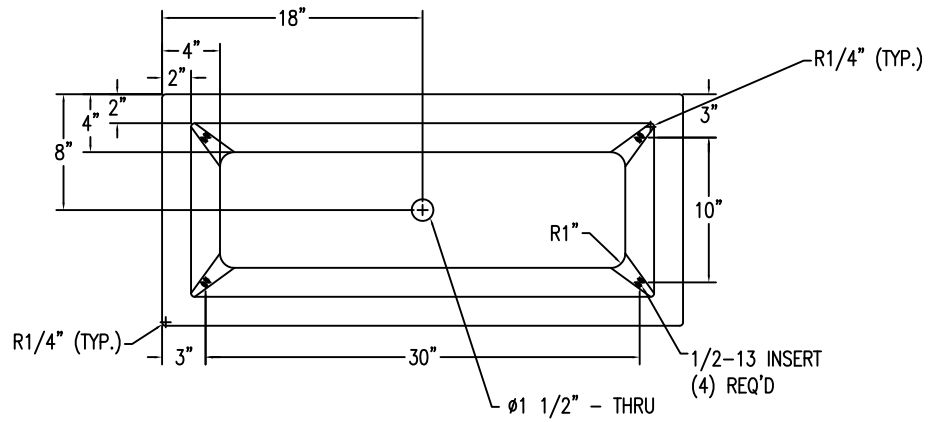
UNLESS OTHERWISE SPECIFIED
DIMENSIONS ARE IN INCHES
ANGLES SHOWN
2 P.L. 2000 3 P.L. 3000S



Size: 36" L x 16" W x 36" H
Weight: 995 Lbs.
Capacity: 5 cubic ft/ .19 cubic yds
Material: Reinforced concrete
Reinforcing: 3/8" Dia. steel rebar

Acid Wash Finish:

White



REVISIONS						DRAWN BY	MAJS	JOB	MATERIAL	CONCRETE
NO.	DATE	BY	NO.	DATE	BY	TITLE	JOB NO.	WEIGHT	1,000 LBS.	
1			4			SCALE				
2			5			CHECKED				
3			6							

WAUSAU TILE SITE FURNISHINGS
 P.O. BOX 1230 WAUSAU, WISCONSIN 54980-1230 800/288-4728
 P.O. BOX 907 DANVILLE, CALIFORNIA 92523 800/251-4638

UNLESS OTHERWISE SPECIFIED
 DIMENSIONS ARE IN INCHES
 FINISHES SHOWN
 2 PL. 2000 3 PL. 2000S

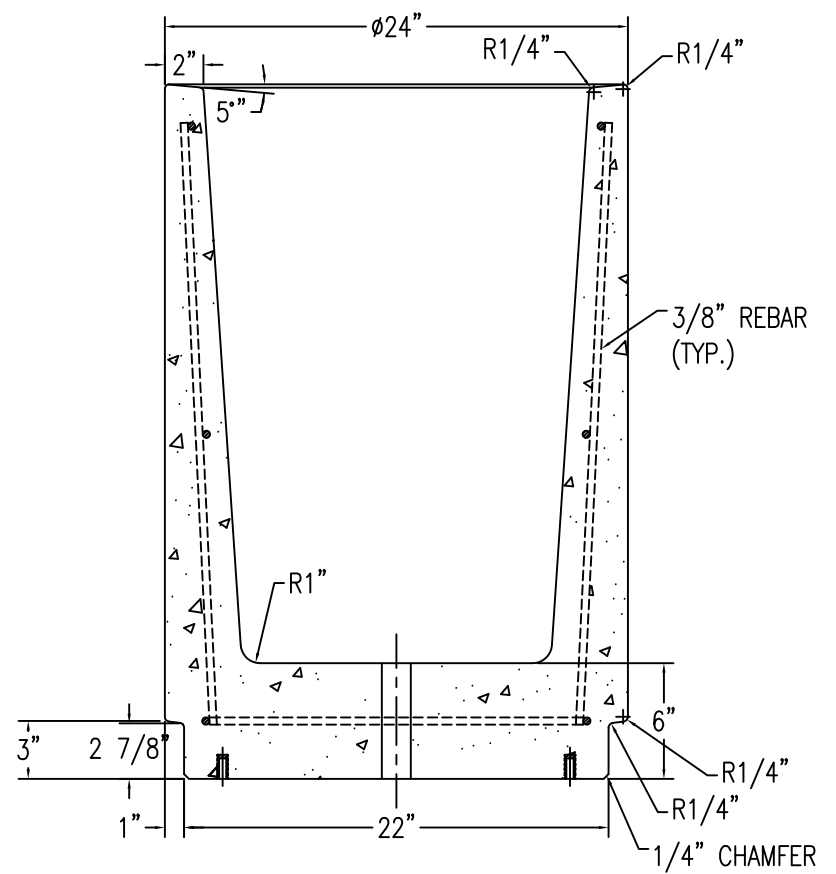
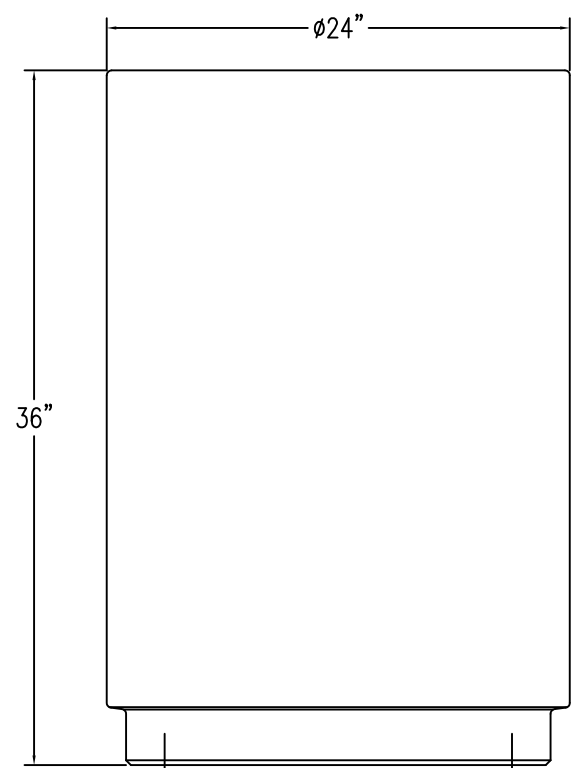
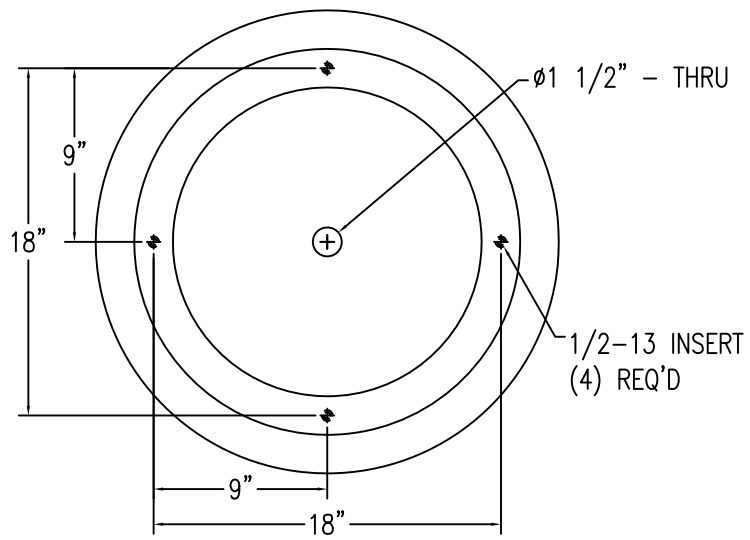
DATE: 02/06/09
 FINISH OPTIONS
 DWG. NO.: TF4355



Size: 24" Dia. x 36" H
Weight: 650 Lbs.
Capacity: 4.4 cubic ft/ .16 cubic yds
Material: Reinforced concrete
Reinforcing: 3/8" Dia. steel rebar

Acid Wash Finish:

White



WAUSAU TILE SITE FURNISHINGS						P.O. BOX 1520 WAUSAU, WISCONSIN 54980-1520 800/288-6728		P.O. BOX 907 DUNSMuir, CALIFORNIA 92323 800/251-4638		
REVISIONS					DRAWN BY		JOB NO.		MATERIAL	
NO.	DATE	BY	NO.	DATE	TITLE			WEIGHT		
1			4		SCALE					
2			5		CHECKED					
3			6							

UNLESS OTHERWISE SPECIFIED DIMENSIONS ARE IN INCHES ANGLES SHOWN ARE AS SHOWN
2 PL. 2000 3 PL. 3000

DATE _____ FINISH OPTIONS _____ DWG. NO. TF 4354



Size: 21.5" Dia. x 41" Height

Weight: 134 Lbs.

Material: Powder coated aluminum,
top .063 alum., body .09 alum.

Concrete base, part #7116

30 gallon, polyethylene liner

Other: Anchoring kit available

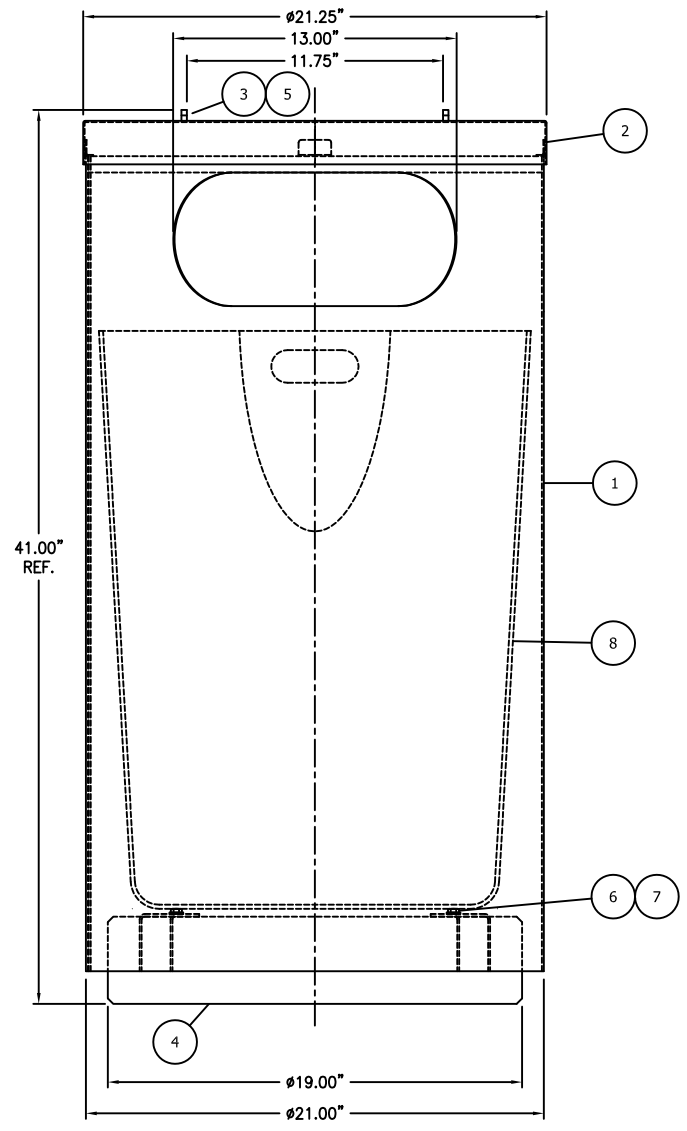
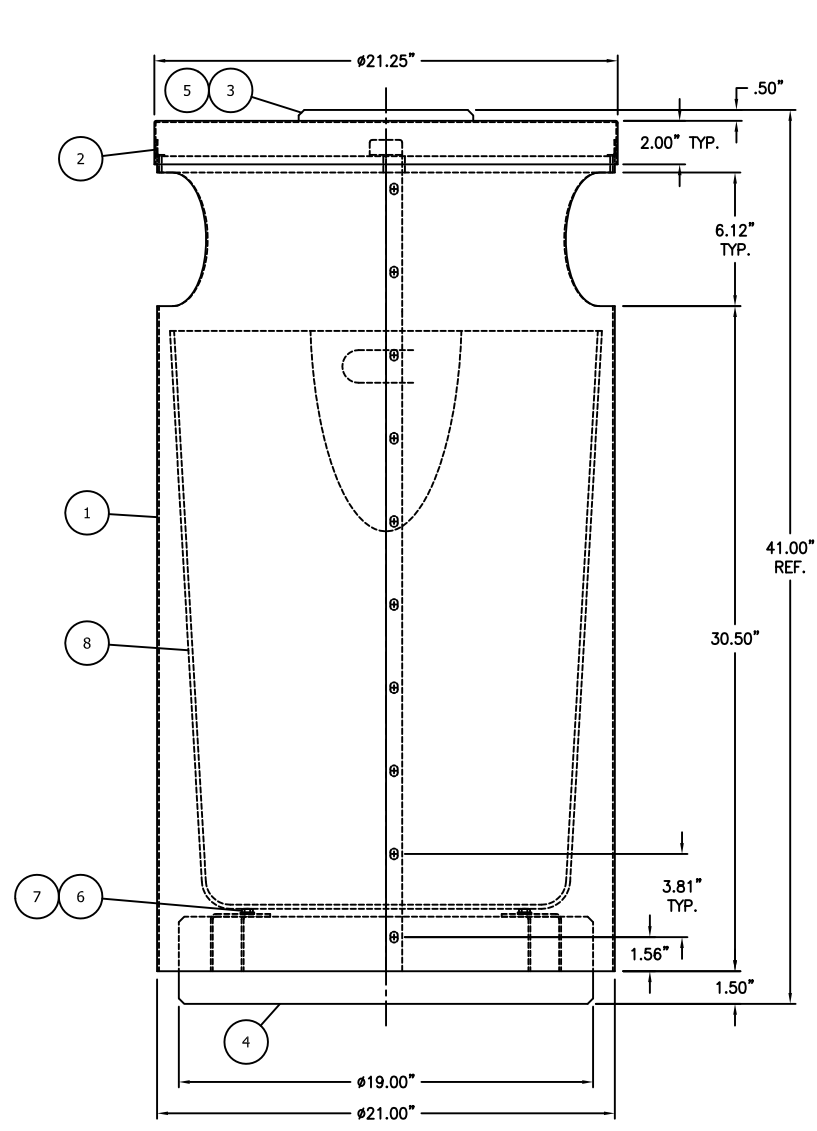
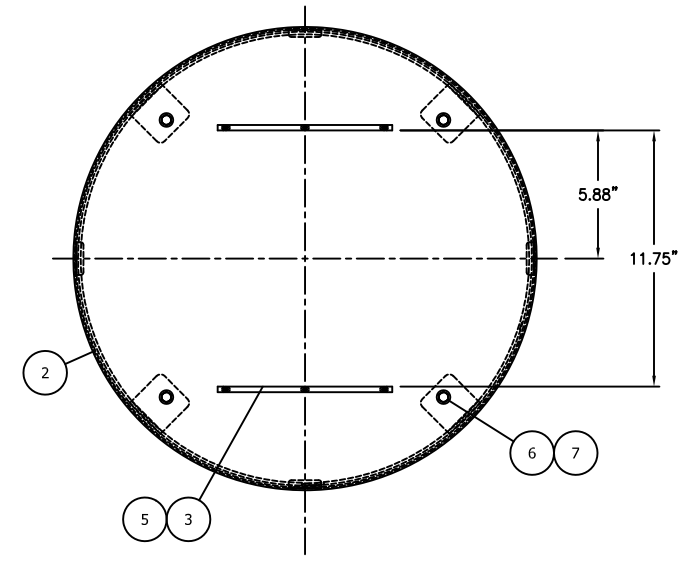
Powder Coating Colors:

Standard Colors: 83 Silk Gray, 84 Beige Gray, 10 Bronze,
8 Black



BILL OF MATERIALS

Rev	Seq	QTY	UN	PART NUMBER	AT	LD	SC	DESCRIPTION	CODE
1	1.00	EA	351293	X				WASTE CONTAINER BOTTOM	-
2	1.00	EA	351294	X				WASTE CONTAINER TOP	-
3	2.00	EA	700826	X				TRAY RAIL	-
4	1.00	EA	7116	X				WASTE CONTAINER BASE	-
5	6.00	EA	400051	X				#8-32 X .25' LONG S.S. BHSCS	-
6	4.00	EA	RM10488	X				.25"-20 X .75' LG. S.S. HHCS	-
7	4.00	EA	71013	X				.25" S.S. FLAT WASHER	-
8	1.00	EA	100174	X				PLASTIC WASTE CONTAINER LINER	-



REV	DESCRIPTION	NAME	DATE
3	REVISED ITEM #8 PART NUMBER	MWJ	7/29/11
2	30.50" DIM. WAS 32.00" - 41.00" DIM. WAS 42.50"	MWJ	6/15/11
1	REVISED ITEM 3 LOCATION DIMS-ADDED REINFORCING RING	MWJ	4/21/11

WAUSAU TILE		P.O. BOX 1520 WAUSAU, WISCONSIN 54402-1520 800/388-8728	
DRAWN BY	M JOHNSON	TITLE	3401 WASTE CONTAINER ASSY.
JOB NO.	JOB	MATERIAL	-
SCALE	1/4" = 1"	DATE	4/4/11
UNLESS OTHERWISE SPECIFIED DIMENSIONS ARE IN INCHES FRACTIONS 1/64" 2 PL. ±0.01 3 PL. ±0.005		FINISH OPTIONS	
		DWG. NO.	351292





Memorandum

To: Plan Commission
From: Kimberly Flom, Development Services Assistant Director
Date: January 14, 2013
Subject: New Petitions & Appearance Reviews

Below, please find a summary of recently petitioned projects and appearance reviews. Petitioned projects are currently under review by staff and may or may not be on a future Plan Commission agenda. These projects have been petitioned to the Village but may not have obtained all the approvals required to begin work. Projects sometimes are terminated without moving forward for a variety of reasons. Appearance reviews are reviewed and approved administratively. The below list also does not include cell tower co-location or expansion projects. Please contact me with any questions regarding the below projects.

Appearance Improvement Grants

Joon Lee – Tae Kwon Do Appearance Improvement Grant – 14355 Lagrange Road
Appearance Improvement Grant for façade improvements to former Crest Lighting building.

El Cameno Façade – 9965 151st Street
Appearance Improvement Grant for façade improvements to the El Cameno shopping center (7-11).

Appearance Review Projects

Dumpster Enclosure – 9105 151st Street
New dumpster enclosure.

Harbor Freight Tools – 7520 159th Street
Façade improvements to support new tenant.

Art Van Furniture Expansion – 15040 Lagrange Road
Façade improvements to accommodate ArtVan expansion into previous ‘Spree’ space.