



- Site Conditions
- Existing Building Conditions
- Storage Needs
- Efficiency
- Employee Concerns

Generate a comprehensive Master Plan to assist with future upgrade of the Public Works Department, based on the above findings.



ORLAND PARK  
LEGATARCHITECTS

# Design Constraints

# Public Works Department Master Plan

Existing Buildings





# Design Charrette

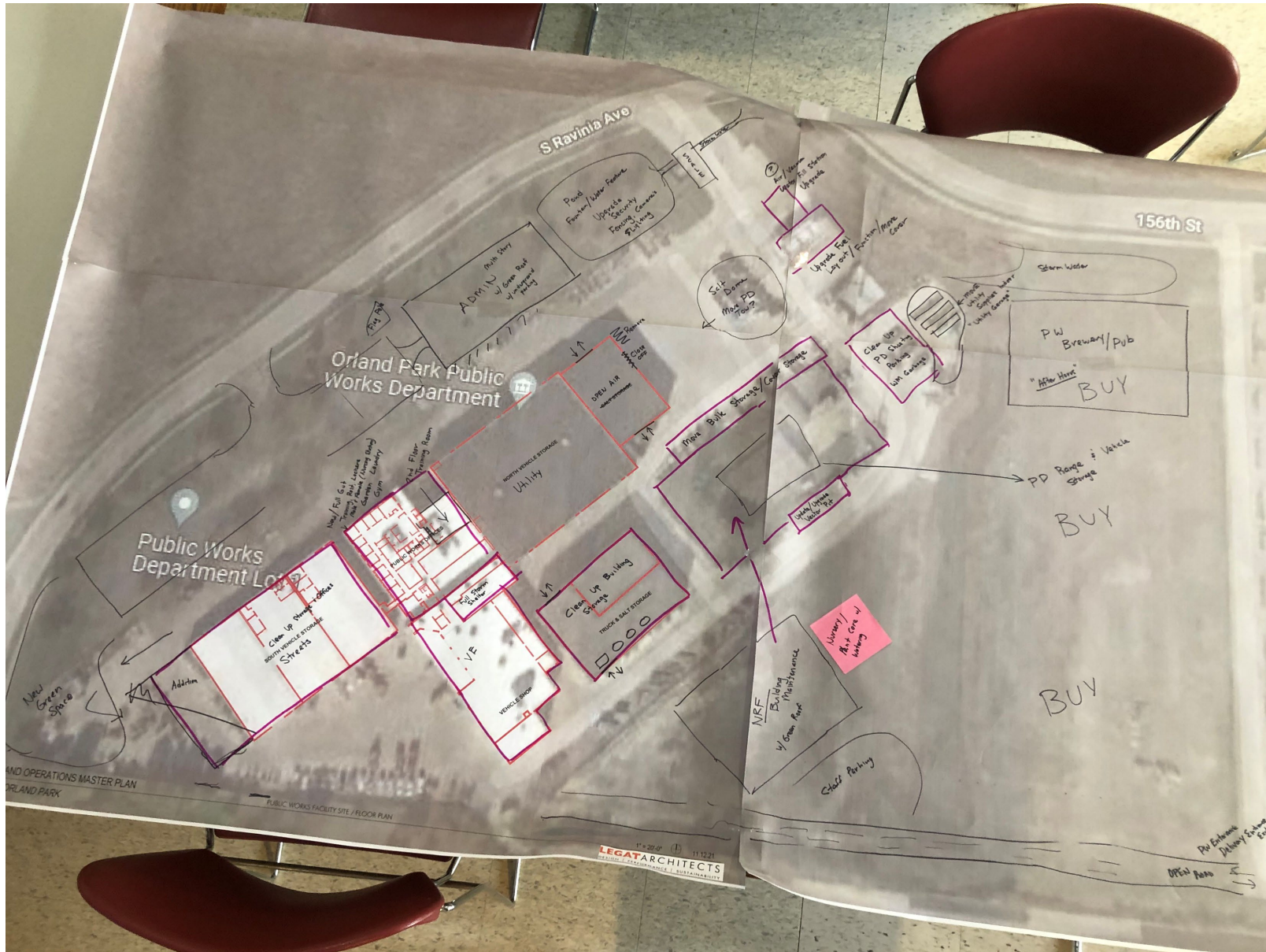


## ► Staff Needs

Public Works staff were divided into groups to provide input on changes / additions that would allow the Public Works Department to function more efficiently.



## Group 1 Comments



## ▶ Staff Needs

- New NRF Facility on Shooting Range Site
- New Streets Facility to Replace South Garage
- New Administration Building
- New Training Room
- Relocate Shooting Range
- New Salt Dome
- Exterior Equipment/Materials Storage Area
- Exterior Green Space



## Group 2 Comments



## Staff Needs

- New NRF Facility
- Rebuild South Garage
- Expand North Garage
- Expanded Break Room
- New Salt Dome
- Expanded Parking Lot
- Relocate Shooting Range
- Covered Exterior Storage Bins



## Group 3 Comments



## Staff Needs

- New NRF Facility
- Expand North Garage
- New Loading Dock
- Expand Break Room
- Paved Southeast Corner of Site
- Expand Parking Lot
- Truck Weight Scale
- Exterior Equipment/Materials Storage Area
- New Salt Dome
- Relocate Shooting Range
- Relocate Vehicle Impound Yard

NRF Equipment	Depth (ft)	Width (ft)	Number of spaces	TAG
4493 - 2003 DITCH 410SX	★			
4105 - 2016 ALAMO SHD88CTRCC	★	30'	10'	
4216 - 2015 MCMILLEN X2475 Skidsteer Auger	★			
4247 - 2017 BOBCAT 66	★			
4590 - 2021 GENIE G54046	★	10'	5'	
5136 - 2001 CARLTON 2400-4	★			
5135 - 2000 MORBARK 13		30'	10'	
5166 - 2013 MORBARK M18RX				
4127 - 2003 CAT IT28		28'	12'	
4402 - 2014 FORD POLICEINTERCEPTOR	★	18'	8'	
4450 - 2021 FORD F450				
4338 - 2017 FORD F350				
4339 - 2014 FORD F250				
4351 - 2012 FORD F250				
4355 - 2012 FORD F250				
4357 - 2012 FORD F250				
4361 - 2019 FORD F250				
4304 - 2019 FORD F450				
4350 - 2015 FORD F550				
4365 - 2012 FORD F550				
4372 - 2012 FORD F550				
4391 - 2019 FORD F450				
5237 - 2004 FORD F750				
4502 - 2021 MORBARK 2131_TA		55'	12'	
4410 - 2014 CHEVROLET EXPRESS	★			
4415 - 2013 CHEVROLET EXPRESS	★			
4418 - 2013 CHEVROLET EXPRESS	★			
4441 - 2007 GMC SAVANA				
4445 - 2016 CHEVROLET EXPRESS3500	★	25'	10'	
4475 - 2015 CHEVROLET EXPRESS	★			
4352 - 2008 CHEVROLET 2500HD	★			
4439 - 2008 GMC SIERRA	★			
4342 - 2017 INTERNATIO WORKSTAR7400	★	36'	12'	
4171 - 2000 WACKER RD11A	★			
4115 - 2020 JOHNDEERE 333G				
4162 - 2013 NEWHOLLAND C227		15'	8'	
4146 - 2000 NEWHOLLAND TC33D				
4501 - 2021 VERMEER SC802				
TL4130 - 2020 GENIE TZ50		26'	12'	
TL4102 - 1990 DYNAWELD SSLIA	★			
TL4104 - 2017 KEMCO U-12	★			
TL4113 - 1993 REDIHAUL RH12TBS	★			
TL4115 - 1998 REDIHAUL FSL14	★			
TL4116 - 1998 REDIHAUL FSL14	★			
TL4121 - 2007 BEAVER OW-20	★	26'	10'	
TL4123 - 2007 BEAVER SD16	★			
TL4151 - 2016 CARGOMATE EHW712TA2	★			
TL4188 - 2013 CARGOMATE BL716TA2	★			
TL4401 - 2022 FELLING FT-A6IT-100788	★			
4117 - 2013 CLUB CAR CARRYALL 272		11'	5'	
Total 53			42	

42 NRF VEHICLES

Streets Equipment	Length (ft)	Width (ft)	Number of Spaces	TAG
5102 - 2009 TURBO TURF ICS300E				
5125 - 2006 BOBCAT T23FL	30'	10'	1	
5195 - 2021 TORO TX1000				
5101 - 2014 CAT 924K	30'	12'	1	
5226 - 2016 FORD TRANSITCONNECT	16'	8'	2	
5354 - 2018 FORD TRANSIT				
5202 - 2019 FORD F250	★			
5204 - 2012 FORD F250	★			
5207 - 2012 FORD F250	★			
5208 - 2012 FORD F250	★			
5665 - 2012 FORD F250	★			
5206 - 2017 FORD F450 SUPER DUTY	30'	10'	11	
5228 - 2017 FORD F450 SUPER DUTY				
5230 - 2017 FORD F450 SUPER DUTY				
5241 - 2014 FORD F550				
5243 - 2014 FORD F550				
5246 - 2017 FORD F550				
5221 - 2017 FORD ESCAPE	★	16'	8'	
5209 - 2012 INTERNATIO WORKSTAR7400				
5211 - 2019 INTERNATIO WORKSTAR7400				
5215 - 2012 INTERNATIO WORKSTAR7400				
5223 - 2015 INTERNATIO WORKSTAR7400				
5240 - 2017 INTERNATIO WORKSTAR7400	40'	12'	9	
5269 - 2015 INTERNATIO WORKSTAR7400				
5276 - 2018 INTERNATIO WORKSTAR7500				
5280 - 2019 INTERNATIO WORKSTAR7400				
5282 - 2019 INTERNATIO WORKSTAR7400				
5279 - 2018 FREIGHTLIN M2-106	30'	12'	1	
PCMS1 - 2011 VERMAC PCMS1500	★			
PCMS2 - 2011 VERMAC PCMS1500	★			
PCMS3 - 2011 VERMAC PCMS1500	★			
PCMS4 - 2011 VERMAC PCMS1500	★	30'	8'	
5138 - 2002 SOLAR TECH AB0715D	★			
5139 - 2002 SOLAR TECH AB0715D	★			
5164 - 2012 WANCO WTSP	★			
5203 - 2005 STERLING L7501				
5205 - 2004 STERLING L7501				
5216 - 2002 STERLING L7501				
5225 - 2002 STERLING L7501				
5229 - 2002 STERLING L7501				
5231 - 2002 STERLING L7501				
5248 - 2002 STERLING L7501	40'	12'	12	
5256 - 2002 STERLING L7501				
5258 - 2002 STERLING L7501				
5262 - 2002 STERLING L7501				
5277 - 2002 STERLING L7501				
5281 - 2002 STERLING L7501				
5236 - 2003 STERLING LT8500				
5127 - 1999 WACKER RD11A				
5194 - 2021 WACKER RD12A	30'	10'	1	
5109 - 1993 NEWHOLLAND L-785				
5113 - 2003 NEWHOLLAND LS 170				
TL5104 - 1989 STOW T3000	★			
TL5107 - 2002 REDIHAUL RH 12TBE	★			
TL5120 - 2007 BEAVER LM-14	★			
TL5136 - 2001 JB ENTERP 05/10 HARG	★			
TL5102 - 1994 REDIHAUL FSL14HE	★	26'	10'	
TL5109 - 2009 LOADTRAIL T08120	★			
TL5119 - 2004 BEAVER LM-12	★			
TL5125 - 2018 CARGOMATE BL716TA2	★			
TL5118 - 1987 DYNAWELD 24TE	★			
Total 66			51	

51 STREETS VEHICLES

Water Equipment	Length (ft)	Width (ft)	Number of Spaces	TAG
6125 - 1994 RAMMAR S-25	★			
6118 - 1990 SULAIR 1750	★	30'	10'	
6127 - 1995 DITCH 1820			1	UT-1
6178 - 2019 WORKHORSE JAJ-600WH				
6120 - 2004 NEWHOLLAND LB75B		30'	12'	
6166 - 2015 NEWHOLLAND B95C				
6167 - 2020 KUBOTA K008-3		30'	12'	
6168 - 2020 KUBOTA KX080-4S			1	UT-3
6129 - 2000 CAT IT28		28'	12'	
6011 - 2012 FORD FOCUS	★	16'	8'	
6001 - 2011 FORD E250				
6064 - 2010 FORD E250				
6008 - 2011 FORD F150	★			
6017 - 2016 FORD F250				
6024 - 2014 FORD F350		30'	10'	
6044 - 2012 FORD F550			9	UT-6
6063 - 2014 FORD F350	★			
6065 - 2014 FORD F350				
6066 - 2019 FORD F450				
6010 - 2008 GMC SAVANA				
6027 - 2008 GMC 2500HD				
6053 - 2003 CHEVROLET SILVERADO 2500HD	25'	10'	5	UT-7
6068 - 2009 CHEVROLET 2500HD				
6093 - 2010 CHEVROLET EXPRESS3500				
6002 - 2003 WORKHORSE STEPVAN	32'	12'	1	UT-8
6078 - 2016 FREIGHTLINER 114SD	45'	12'	1	UT-9
6018 - 2020 INTERNATIO HV607				
6084 - 2016 INTERNATIO WORKSTAR7400	40'	12'	3	UT-10
6085 - 2015 INTERNATIO WORKSTAR7400				
6101 - 1999 NEWHOLLAND LX865	16'	8'	1	UT-11
TL6105 - 1996 KARAVAN TRAILER	★			
TL6114 - 1997 BEAVER OW-20	★	26'	10'	
TL6178 - 2019 PJTRAILERS 47712			4	UT-12
TL6106 - 2004 BEAVER OW-20	★			
6132 - 1998 TORO 3300-D	★	16'	7'	
Total 40			31	UT-13

31 UTILITIES VEHICLES

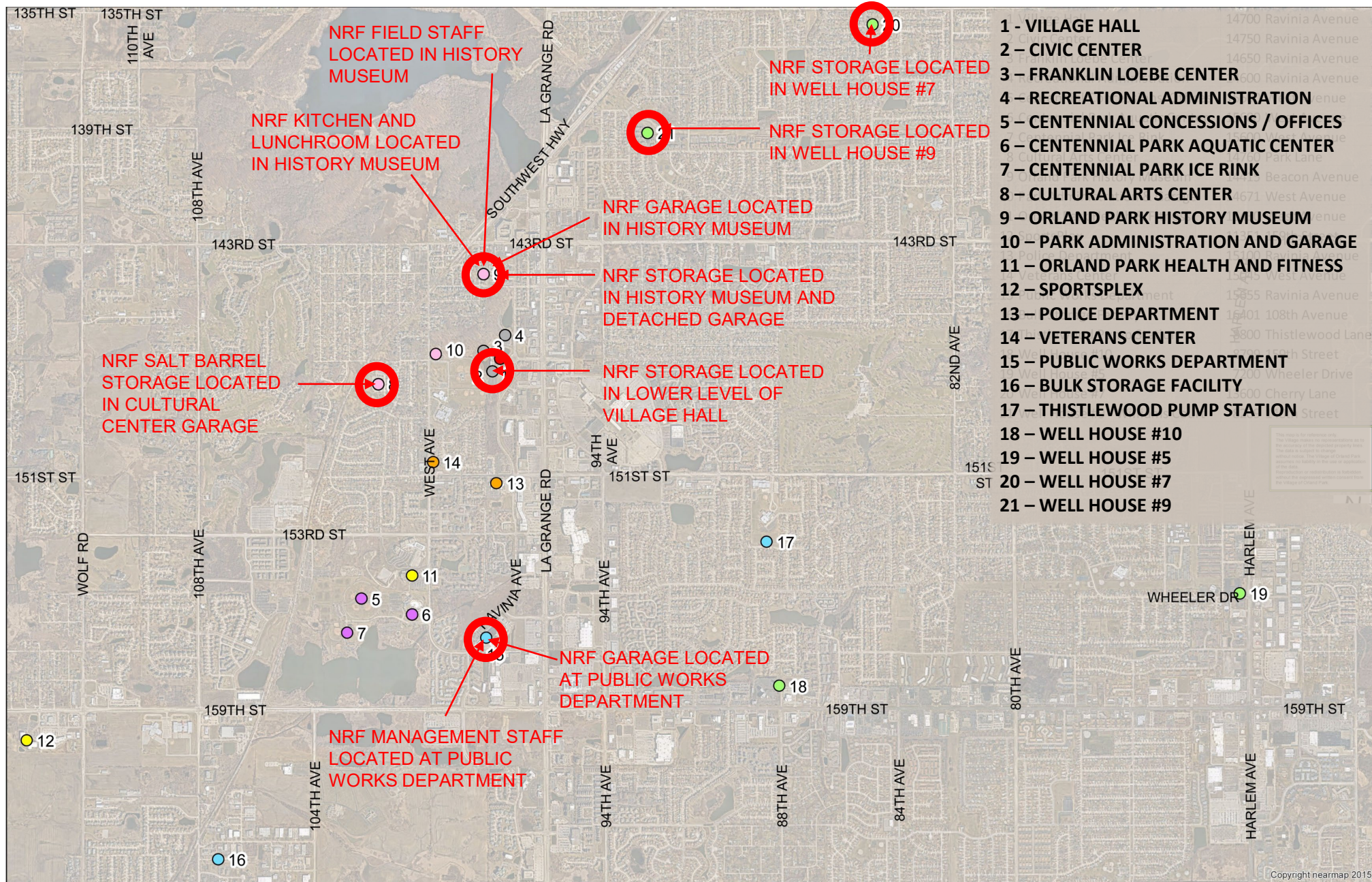
#### Note:

Vehicles and equipment designated with “★” can be stored outside.

# Public Works Department Master Plan

The Public Works Vehicle Fleet was used to determine the optimal size for the vehicle storage garages.





## Public Works Department Master Plan

The current location of NRF Staff and Equipment was provided, along with a requirement for consolidation the NRF in one facility on the Public Works Site.





## Public Works Department Master Plan

The existing South Vehicle Storage Garage is approximately 80 years old and has outlived its useful life.







**Facilities  
Condition  
Assessment**

Wood slat walls of the Police Shooting Range and its proximity to the Public Works Building create an unsafe site condition.



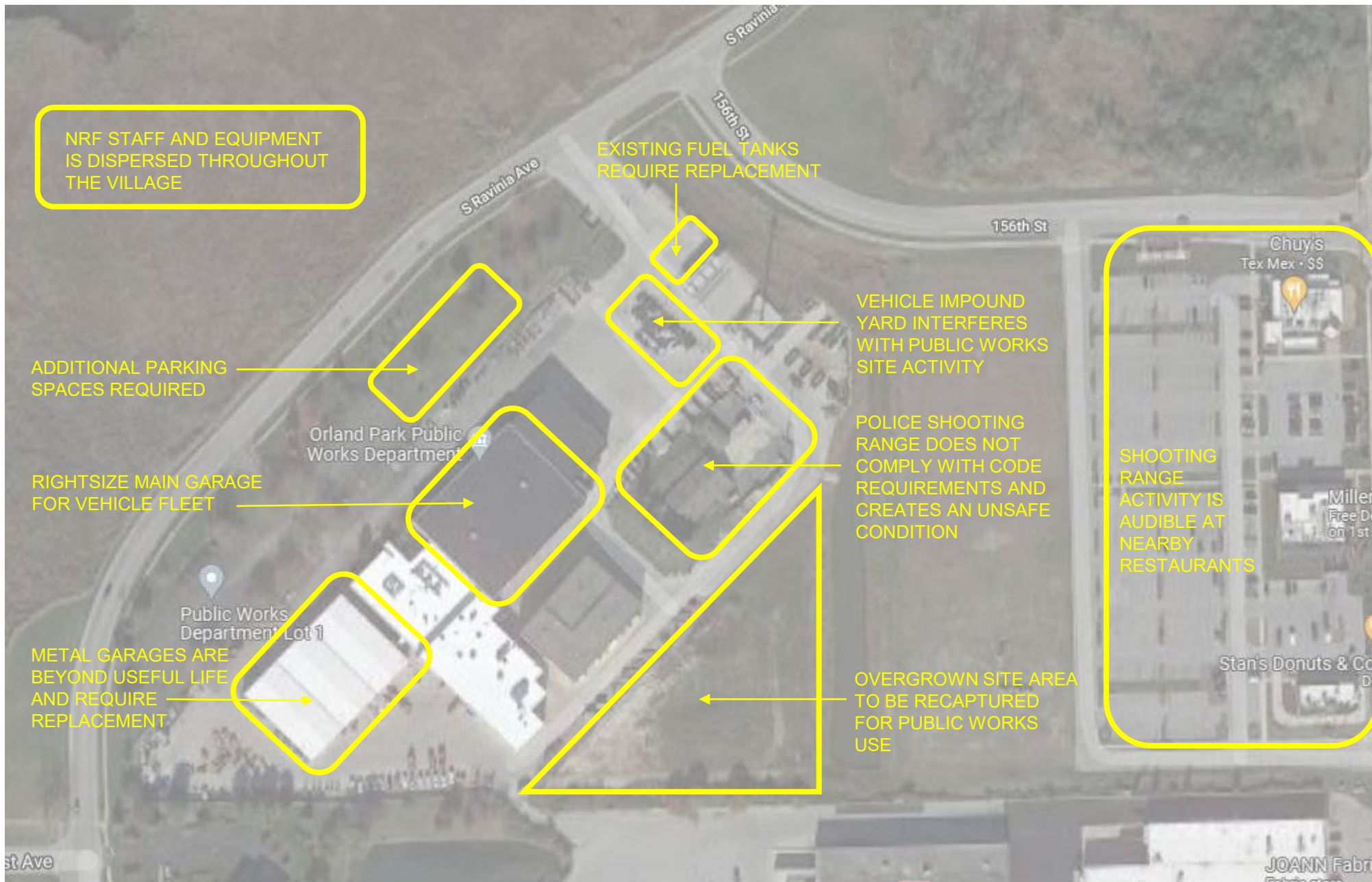


## Public Works Master Plan

Based on discussions with the Public Works Staff, the Police Shooting Range and Vehicle Impound Yard can be moved to an alternate site on land that is owned by the Village.

The Orland Park Fire Training Facility and industrial buildings are near the proposed site.





## Public Works Department Master Plan

Combined Staff, Equipment and Programming Needs:

- Consolidation of NRF Staff.
- Sufficient garage space to store all Public Works vehicles.
- Additional parking spaces for private vehicles.
- Upgrade of the existing South Vehicle Garage.
- Reclamation of overgrown land in southeast corner of site.
- Relocate Vehicle Impound Yard to improve Public Works vehicle circulation.
- Relocate Police Shooting Range to eliminate unsafe site condition.

# Design Options





#### DRAWING LEGEND

- CIRCULATION
- MEETING ROOM
- LAUNDRY
- MEN'S LOCKER ROOM
- WOMEN'S LOCKER ROOM
- UNISEX LOCKER ROOM
- OFFICE
- RECEPTION / ADMINISTRATION
- STAFF LOUNGE / BREAK ROOM
- STORAGE
- SALT STORAGE
- TOILET ROOM
- TOOL STORAGE
- WORKROOM
- EXISTING AREA RENOVATION
- EXISTING AREA (NO WORK)
- GARAGE (NEW CONSTRUCTION)
- LOADING DOCK
- NRF VEHICLE PARKING
- STREETS VEHICLE PARKING
- UTILITIES VEHICLE PARKING
- GREENSPACE
- PAVEMENT - ASPHALT
- PAVEMENT - DECORATIVE
- MATERIAL STORAGE BINS

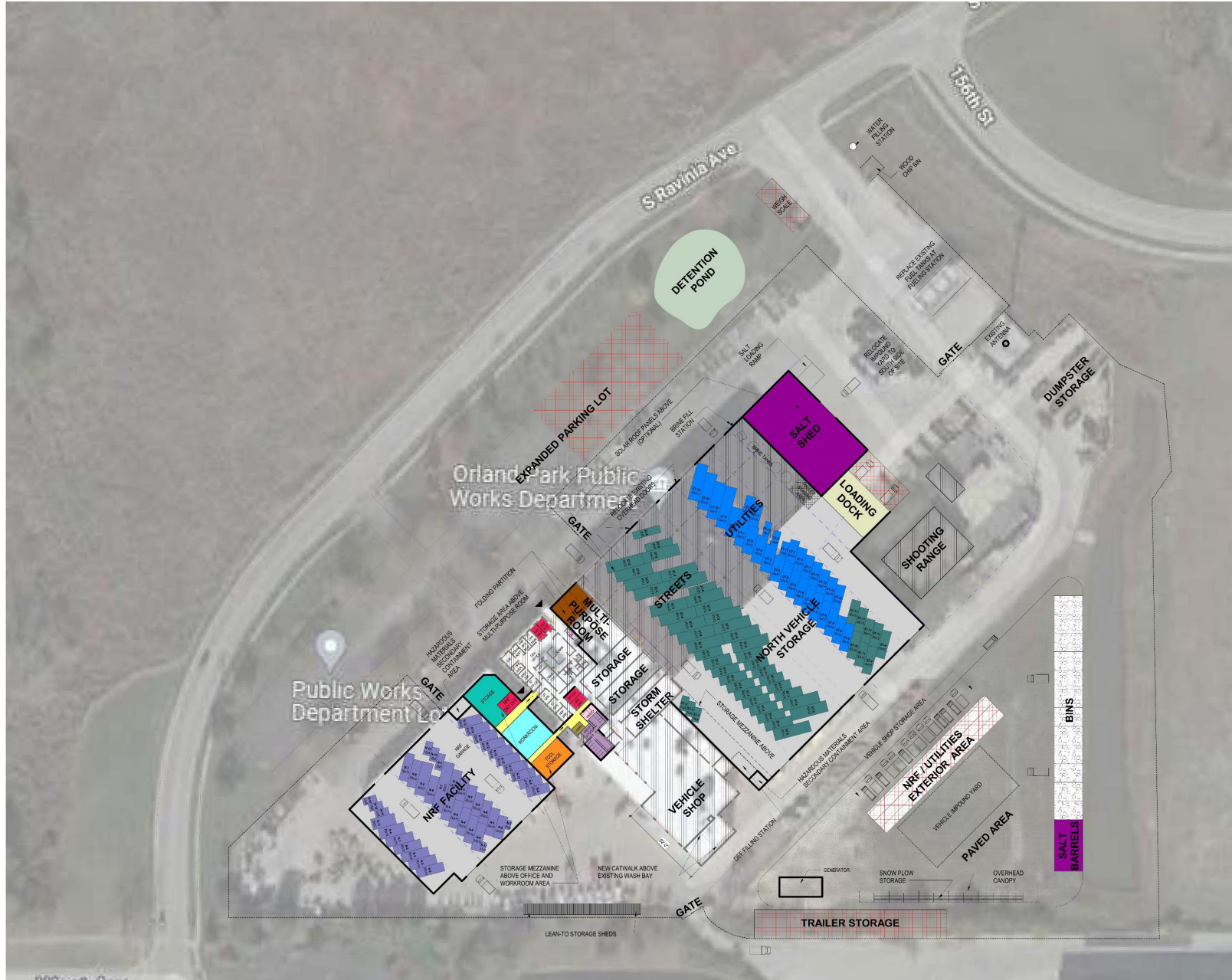
## Option 1

- Detached NRF Facility on Site of Existing Shooting Range
- New Streets Facility on Site of Existing South Garage
- Expanded Multi-Purpose Room
- Renovated Locker Rooms
- New Salt Shed
- Existing Truck and Salt Storage Building Maintained for Additional Vehicle and Equipment Storage
- Paved Southeast Corner of Site
- Expanded Parking Lot
- New Weigh Scale
- Exterior Equipment/Material Storage Areas









#### DRAWING LEGEND

- CIRCULATION
- MEETING ROOM
- LAUNDRY
- MEN'S LOCKER ROOM
- WOMEN'S LOCKER ROOM
- UNISEX LOCKER ROOM
- OFFICE
- RECEPTION / ADMINISTRATION
- STAFF LOUNGE / BREAK ROOM
- STORAGE
- SALT STORAGE
- TOILET ROOM
- TOOL STORAGE
- WORKROOM
- EXISTING AREA RENOVATION
- EXISTING AREA (NO WORK)
- GARAGE (NEW CONSTRUCTION)
- LOADING DOCK
- NRF VEHICLE PARKING
- STREETS VEHICLE PARKING
- UTILITIES VEHICLE PARKING
- GREENSPACE
- PAVEMENT - ASPHALT
- PAVEMENT - DECORATIVE
- MATERIAL STORAGE BINS

## Option 2A

- Attached NRF Facility on Site of Existing South Garage
- Expanded Multi-Purpose Room
- Renovated Locker Rooms
- Expanded North Garage
- New Loading Dock
- New Salt Shed
- Paved Southeast Corner of Site
- Expanded Parking Lot
- New Weigh Scale
- Exterior Equipment/Material Storage Areas
- North Garage Storage Area Reduced to Accommodate Shooting Range Remaining at its Current Location
- Vehicle Impound Yard Moved to Southeast Corner of Site



# Consensus Option





#### DRAWING LEGEND

- CIRCULATION
- MEETING ROOM
- LAUNDRY
- MEN'S LOCKER ROOM
- WOMEN'S LOCKER ROOM
- UNISEX LOCKER ROOM
- OFFICE
- RECEPTION / ADMINISTRATION
- STAFF LOUNGE / BREAK ROOM
- STORAGE
- SALT STORAGE
- TOILET ROOM
- TOOL STORAGE
- WORKROOM
- EXISTING AREA RENOVATION
- EXISTING AREA (NO WORK)
- GARAGE (NEW CONSTRUCTION)
- LOADING DOCK
- NRF VEHICLE PARKING
- STREETS VEHICLE PARKING
- UTILITIES VEHICLE PARKING
- GREENSPACE
- PAVEMENT - ASPHALT
- PAVEMENT - DECORATIVE
- MATERIAL STORAGE BINS

## Public Works Department Master Plan

### Phase 1 – Site Construction

- Parking Lot Expansion
- Weigh Scale
- Fuel Tank Replacement
- Pavement in Southeast Corner
- Material Storage Bins
- Covered Storage Areas

### Phase 2 – New NRF Facility and Admin Building Interior Renovation

- Existing Metal Garage Demolition
- New NRF Facility on Old Metal Garage Site
- Administration Building Interior Renovation, Including Multi-Purpose Room Addition

### Phase 3 – Shooting Range Construction

- Demolition of Existing Shooting Range and Sheds
- Construction of new Off-Site Shooting Range

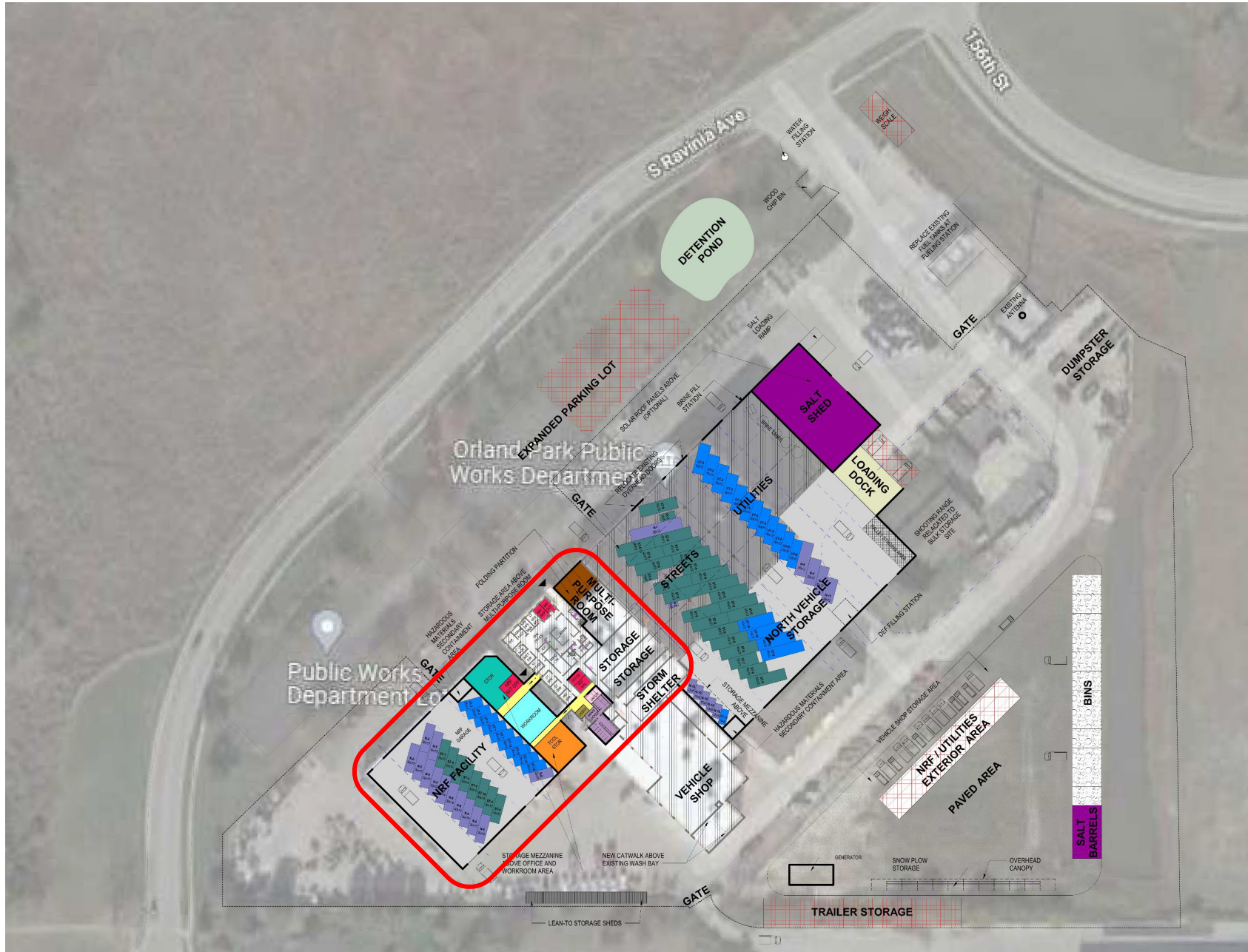
### Phase 4 – North Garage Expansion

- Demolition of existing storage building
- North Garage Expansion
- Salt Shed Construction
- Loading Dock Construction









#### DRAWING LEGEND

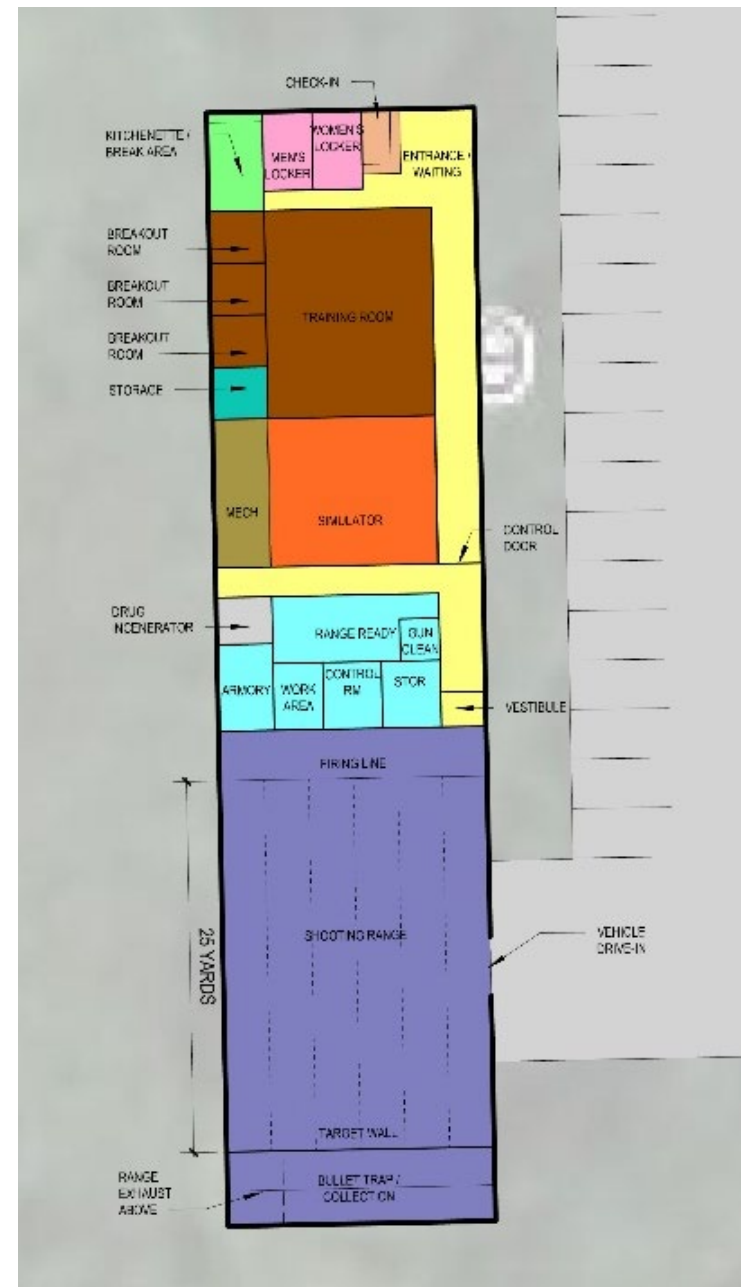
- CIRCULATION
- MEETING ROOM
- LAUNDRY
- MEN'S LOCKER ROOM
- WOMEN'S LOCKER ROOM
- UNISEX LOCKER ROOM
- OFFICE
- RECEPTION / ADMINISTRATION
- STAFF LOUNGE / BREAK ROOM
- STORAGE
- SALT STORAGE
- TOILET ROOM
- TOOL STORAGE
- WORKROOM
- EXISTING AREA RENOVATION
- EXISTING AREA (NO WORK)
- GARAGE (NEW CONSTRUCTION)
- LOADING DOCK
- NRF VEHICLE PARKING
- STREETS VEHICLE PARKING
- UTILITIES VEHICLE PARKING
- GREENSPACE
- PAVEMENT - ASPHALT
- PAVEMENT - DECORATIVE
- MATERIAL STORAGE BINS

## Public Works Department Master Plan

### Consensus Option Phase 2

New South Building and  
Interior Renovation

- New NRF spaces consolidated from other facilities
- Locker Room Renovation
- Multi-Purpose Room Addition and Renovation



## Public Works Department Master Plan

**Consensus Option Phase 3**  
Proposed Plans for Relocated Shooting Range and Vehicle Impound Yard





#### DRAWING LEGEND

- CIRCULATION
- MEETING ROOM
- LAUNDRY
- MEN'S LOCKER ROOM
- WOMEN'S LOCKER ROOM
- UNISEX LOCKER ROOM
- OFFICE
- RECEPTION / ADMINISTRATION
- STAFF LOUNGE / BREAK ROOM
- STORAGE
- SALT STORAGE
- TOILET ROOM
- TOOL STORAGE
- WORKROOM
- EXISTING AREA RENOVATION
- EXISTING AREA (NO WORK)
- GARAGE (NEW CONSTRUCTION)
- LOADING DOCK
- NRF VEHICLE PARKING
- STREETS VEHICLE PARKING
- UTILITIES VEHICLE PARKING
- GREENSPACE
- PAVEMENT - ASPHALT
- PAVEMENT - DECORATIVE
- MATERIAL STORAGE BINS

## Public Works Department Master Plan

### Consensus Option Phase 4

#### North Garage Expansion

- Existing Storage Building Demolition
- North Garage Expansion
- Salt Shed and Loading Dock Construction

# PUBLIC WORKS DEPARTMENT ADDITION AND RENOVATION SUMMARY

## Public Works Department Master Plan

Consensus Option  
Summary

NRF Building Storage	6,738 SF
Admin Building Storage	8,040 SF
North Garage Storage	7,800 SF
Pallet Storage Area	1,185 SF
<b>Total Storage</b>	<b>23,763 SF</b>

Existing Storage	+/-18,000 SF
Storage Overage	+/-5,700 SF

Note:  
Construction requires relocation of the existing  
Shooting Range and Vehicle Impound Yard.

<b>Targeted Construction Costs</b>	
Phase 1: Site Construction	\$5,000,000
Phase 2: NRF Facility / Renovation	\$5,000,000
Phase 3: Shooting Range / Impound	\$6,500,000
Phase 4: North Garage Expansion	<u>\$5,000,000</u>
<b>Total</b>	<b>\$21,500,000</b>

