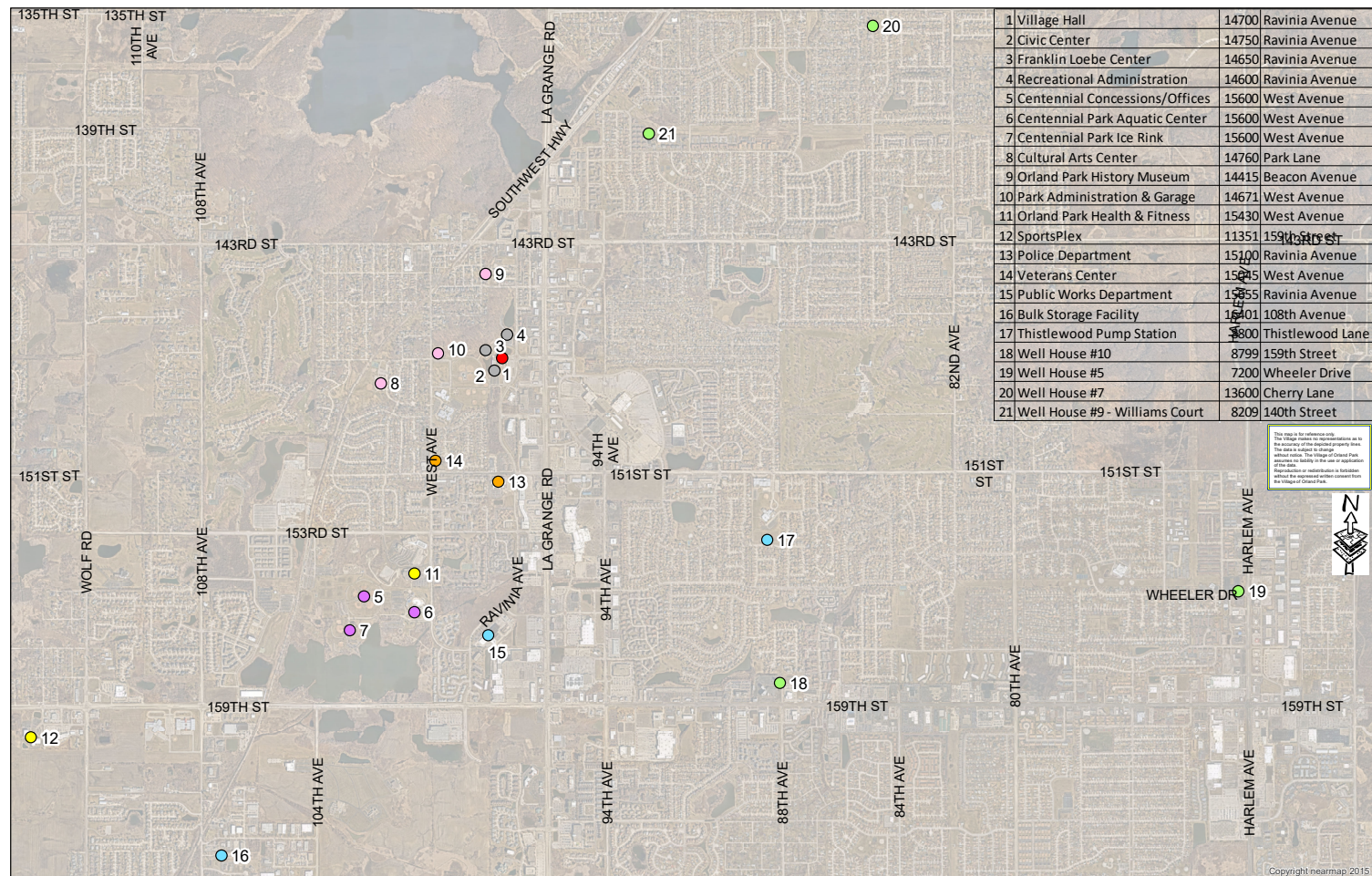


# VILLAGE OF ORLAND PARK

## FACILITIES & OPERATIONS

### MASTER PLAN



## PHASE 4 - RECREATION ADMINISTRATION & PARKS

# **OPT1**

**COSMETIC &  
REUSE**

1 Village Hall  
14700 Ravinia Avenue

10 Park Administration & Garage  
14671 West Avenue

11 Orland Park Health & Fitness Center  
15430 West Avenue  
Wrestling to relocate here.  
Re-purpose Kids Gym Area for Day Camp to relocate here.

12 SportsPlex  
11301 159th Street

13 Police Department  
15100 Ravinia Avenue

14 Veterans Center  
15045 West Avenue

2 Civic Center  
14700 Ravinia Avenue  
Used for events.  
Overflow for Cultural Arts Programs  
Potential Day Camp functions

3 Franklin Loebe Center  
14650 Ravinia Avenue  
Cultural Arts Department to relocate here.  
Preschool to be vacated.  
Wrestling to relocate to (11).

4 Recreation Administration  
14600 Ravinia Avenue  
Recreation Administration Department to remain.  
Parks Department, and Parks Maintenance Vans to relocate here.  
Parks Field Operations Vehicles & Storage Parking to relocate here, Parking Lot by pond, Athletic Field Storage at Garage.

5 Centennial Concessions/Offices  
15000 West Avenue

6 Centennial Park Aquatic Center  
15000 West Avenue

7 Centennial Park Ice Rink  
15000 West Avenue

8 Cultural Arts Center  
14760 Park Lane

9 Orland Park History Museum  
14415 Beacon Avenue

15 Public Works Department  
15055 Ravinia Avenue

16 Bulk Storage Facility  
10401 159th Avenue

17 Thistlewood Pump Station  
8500 Thistlewood Lane

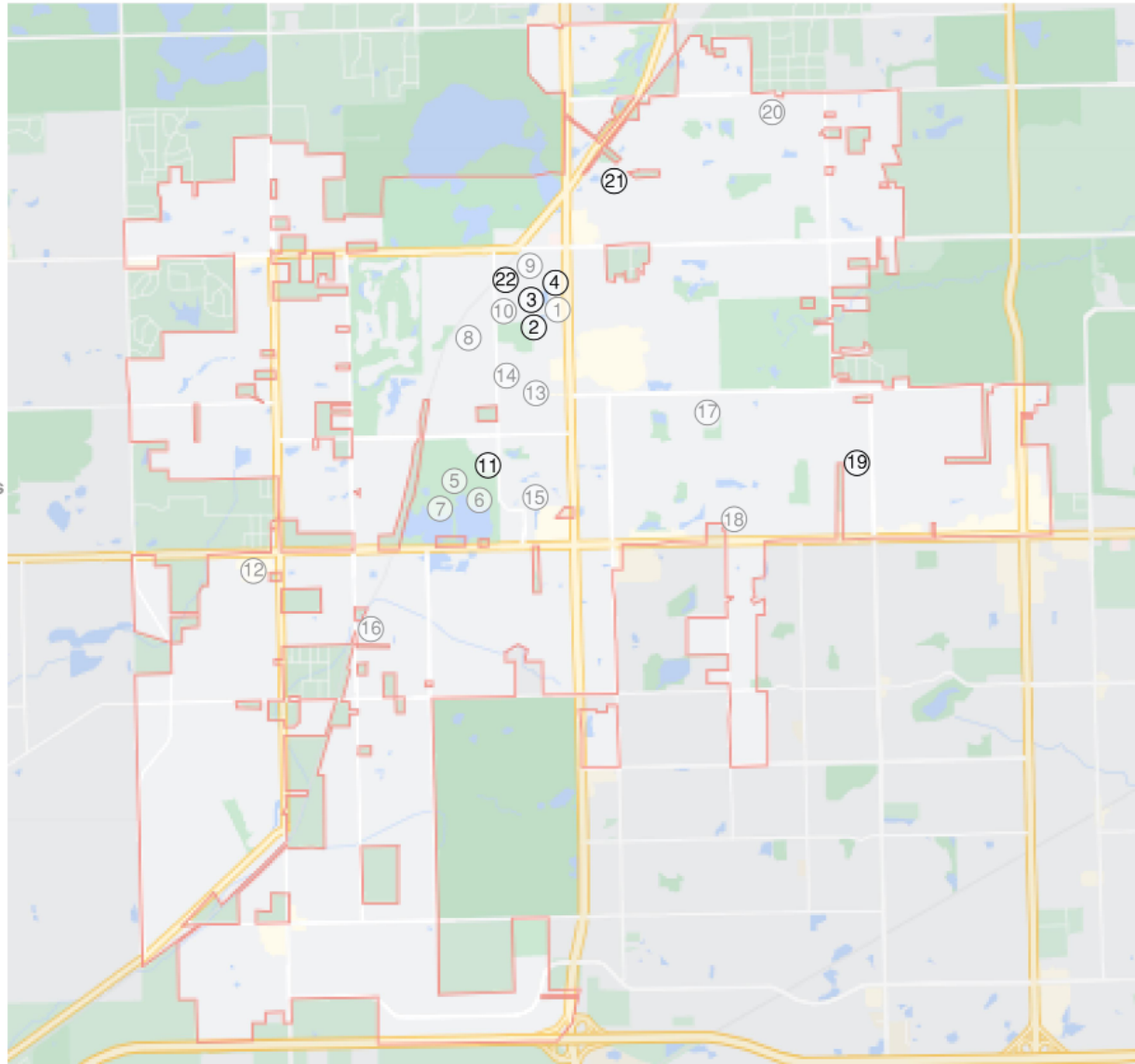
18 Well House #10  
8799 159th Street

19 Well House #5  
7350 Wheeler Drive  
Theater Storage

20 Well House #7  
15600 Cherry Lane

21 Well House #9  
8229 140th Street  
Recreation Administration Storage

22 John Humphrey House  
5830 W. 144th Place  
History Museum Storage and Display



## ORLAND PARK MASTER PLAN - RECREATION & PARKS: OPTION 1

### SPACE & PROGRAMMING NEEDS ASSESSMENT

#### VILLAGE OF ORLAND PARK

LEGATARCHITECTS  
DESIGN | PERFORMANCE | SUSTAINABILITY

LEGEND  
# BUILDING NUMBER LABEL



# RECREATION ADMINISTRATION

## DEPARTMENT PLAN - LOWER LEVEL



### REC ADMIN - BUILDING SCHEDULE - OPTION 1

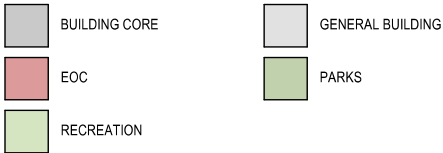
DEPARTMENT & ROOM TYPE	RECONFIGURED AREA	DESIRED AREA	EXISTING AREA
<b>FLEX</b>			
OFFICE / CLERICAL	349 SF	0 SF	0 SF
<b>FLEX SUMMARY:</b>	<b>349 SF</b>	<b>0 SF</b>	<b>0 SF</b>
<b>GENERAL BUILDING</b>			
COMMON AREAS	171 SF	200 SF	171 SF
LOCKER ROOMS	780 SF	0 SF	780 SF
MULTIPURPOSE	1059 SF	1100 SF	1059 SF
STORAGE	10 SF	10 SF	10 SF
<b>GENERAL BUILDING SUMMARY:</b>	<b>2020 SF</b>	<b>1310 SF</b>	<b>2020 SF</b>
<b>PARKS ADMINISTRATION</b>			
OFFICE / CLERICAL	509 SF	270 SF	329 SF
FILE STORAGE	2143 SF	2143 SF	2143 SF
FIELD OPERATIONS STORAGE	3718 SF	3000 SF	3290 SF
FIELD OPERATIONS VEHICLES	17338 SF	12000 SF	*
PARKS MAINTENANCE VEHICLES	1319 SF	3400 SF	*
<b>PARKS ADMINISTRATION SUMMARY:</b>	<b>22884 SF</b>	<b>20813 SF</b>	<b>5762 SF</b>
<b>RECREATION ADMINISTRATION</b>			
COMMON AREAS	30 SF	0 SF	30 SF
MEETING ROOMS	630 SF	400 SF	630 SF
OFFICE / CLERICAL	2752 SF	1790 SF	3256 SF
STORAGE	2881 SF	3194 SF	3104 SF
<b>RECREATION ADMINISTRATION SUMMARY:</b>	<b>6292 SF</b>	<b>5384 SF</b>	<b>7020 SF</b>

\* NOT CALCULATED

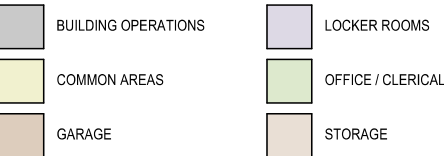
## ROOM TYPE PLAN - LOWER LEVEL



### RECREATION ADMINISTRATION - DEPARTMENT LEGEND



### RECREATION ADMINISTRATION - ROOM TYPE LEGEND



RP-OPT1-2



## 2022 SPACE NEEDS ANALYSIS

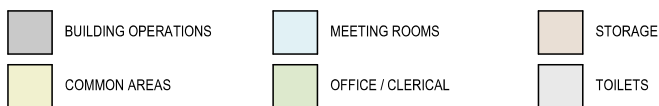


# RECREATION & PARKS: OPTION 1

## ROOM TYPE PLAN - UPPER LEVEL



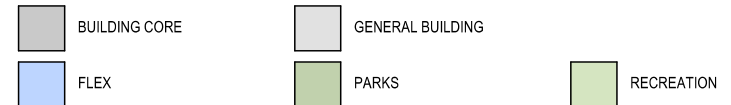
### RECREATION ADMINISTRATION - ROOM TYPE LEGEND



## DEPARTMENT PLAN - UPPER LEVEL



### RECREATION ADMINISTRATION - DEPARTMENT LEGEND



## RECONFIGURED FLOOR PLAN SUMMARY

Option 1 for the Recreation Administration building involves only Phase 1 maintenance and repairs with little to no added renovation. Consolidating Public Works frees up storage space in the cell block area to be used by recreation. On the upper level, furniture configuration and reassigning current spaces accommodates the office needs. This is not an efficient layout for the Recreation and Parks department. The office area has more space than necessary, the locker rooms are under-utilized, and the cell block configuration limits the usefulness of the storage area. Additional storage at Well House 9 would still be required.

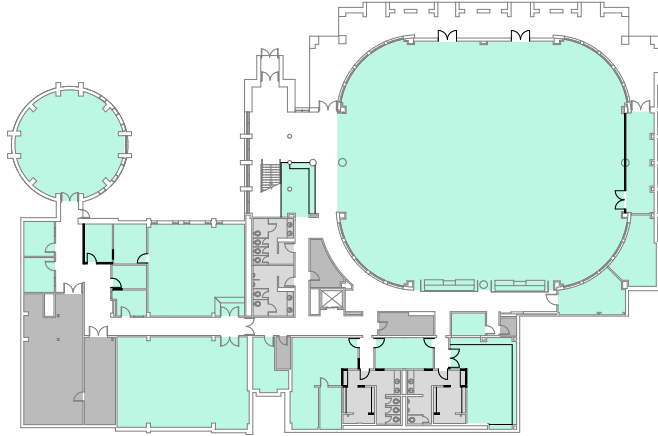
RP-OPT1-3

**LEGAT**ARCHITECTS

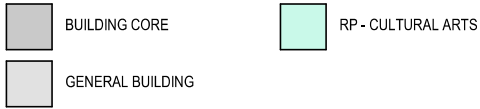
DESIGN | PERFORMANCE | SUSTAINABILITY

# FRANKLIN LOEBE CENTER

## DEPARTMENT PLAN - LOWER LEVEL



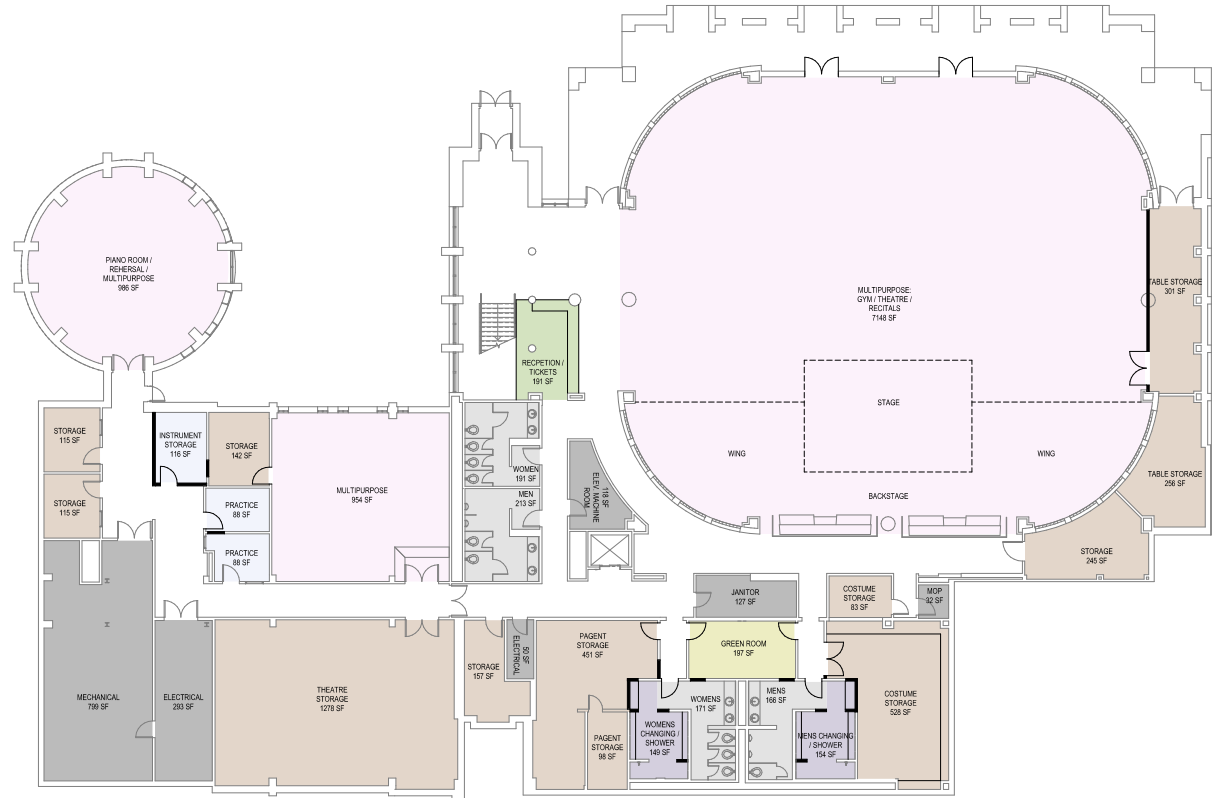
### FRANKLIN LOEBE CENTER - DEPARTMENT LEGEND



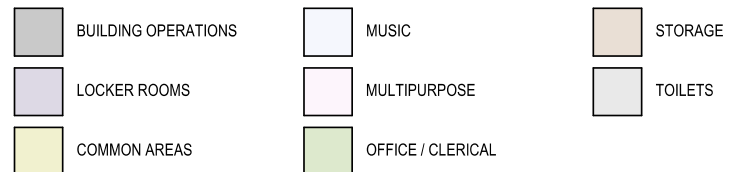
### FLC - BUILDING SCHEDULE - OPTION 1

DEPARTMENT & ROOM TYPE	RECONFIGURED AREA	DESIRED AREA	EXISTING AREA
<b>GENERAL BUILDING</b>			
ACTIVITY	3572 SF	0 SF	3572 SF
LOCKER ROOMS	303 SF	0 SF	1813 SF
<b>GENERAL BUILDING SUMMARY:</b>	<b>3875 SF</b>	<b>0 SF</b>	<b>5385 SF</b>
<b>CULTURAL ARTS</b>			
ACTIVITY	4168 SF	4850 SF	3042 SF
COMMON AREAS	1262 SF	1400 SF	2518 SF
MULTIPURPOSE	10237 SF	10500 SF	7056 SF
MUSIC	292 SF	600 SF	330 SF
OFFICE / CLERICAL	385 SF	120 SF	246 SF
STORAGE	3932 SF	5175 SF	4871 SF
<b>CULTURAL ARTS SUMMARY:</b>	<b>20277 SF</b>	<b>22645 SF</b>	<b>18063 SF</b>

## ROOM TYPE PLAN - LOWER LEVEL



### FRANKLIN LOEBE CENTER - LOWER LEVEL - ROOM TYPE LEGEND

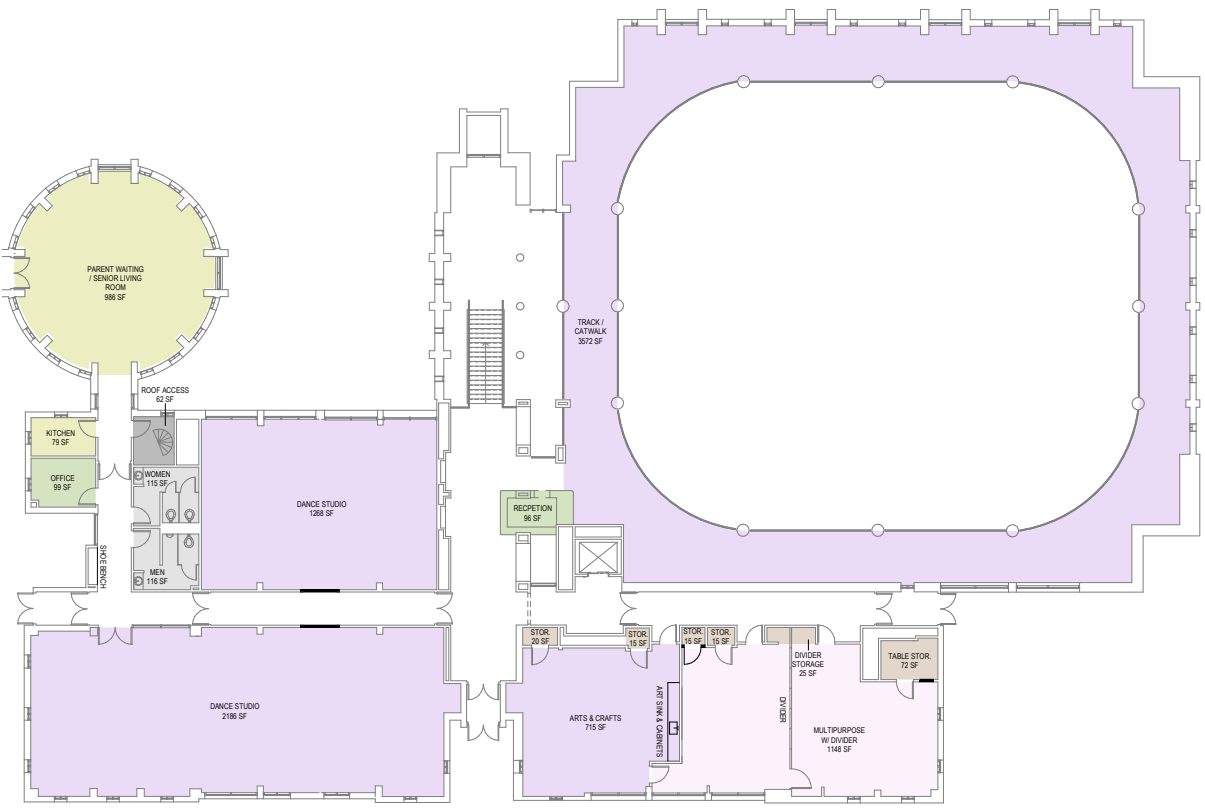


RP-OPT1-4

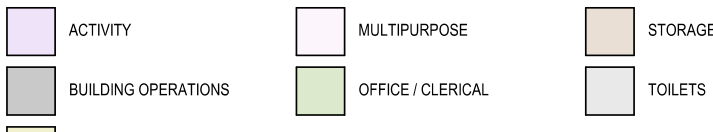


2022 SPACE NEEDS ANALYSIS

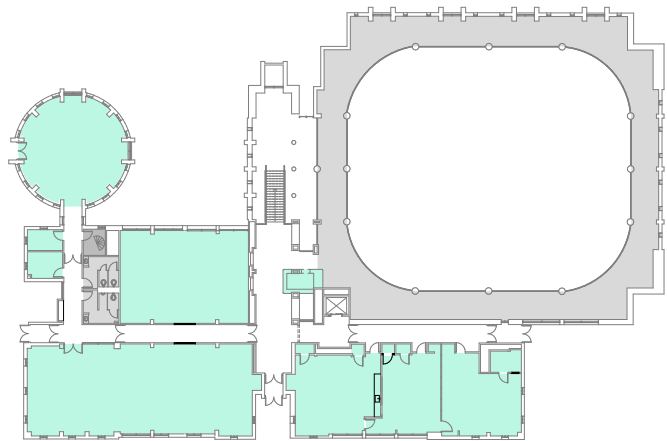
ROOM TYPE PLAN - UPPER LEVEL



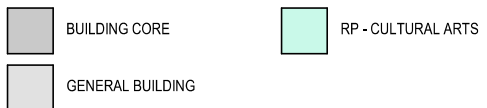
FRANKLIN LOEBE CENTER - UPPER LEVEL - ROOM TYPE LEGEND



DEPARTMENT PLAN - UPPER LEVEL



FRANKLIN LOEBE CENTER - DEPARTMENT LEGEND



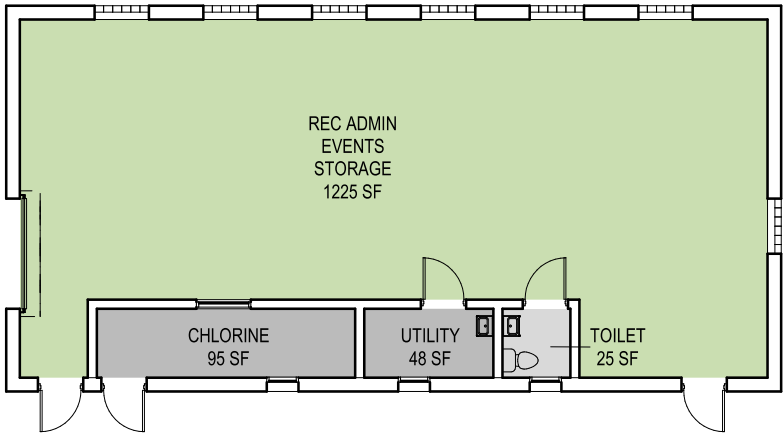
RECONFIGURED FLOOR PLAN SUMMARY

In Option 1, the Franklin Loebe Center is repurposed to serve the cultural arts program. This plan attempts to maximize storage by reducing the under-utilized locker rooms and showers and uses the previous wrestling room that has no natural daylight. The smaller locker rooms could be used as theater dressing rooms with a small green room between. Larger rooms become multipurpose spaces, including the gym, which could be set up for theatre performances or dance recitals. The upper floor converts preschool classrooms into large dance studios, arts and crafts room, and parent waiting / senior living room space, utilizing the existing kitchen. The walking track can remain open to the public and also serve as a catwalk for theatre.

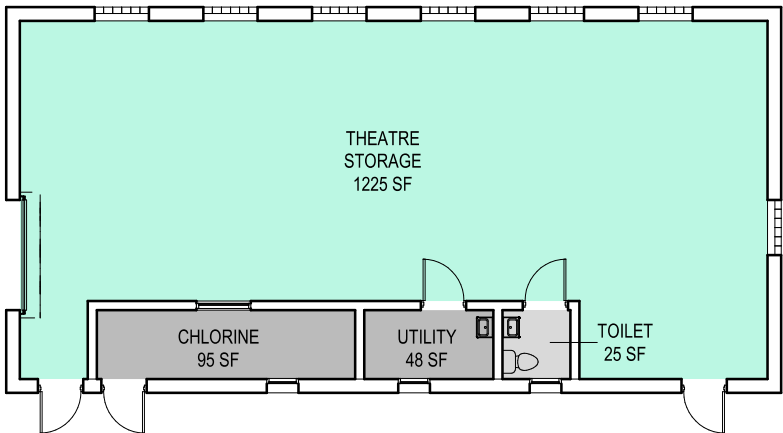


# SUPPLEMENTARY BUILDINGS / SITES

DEPARTMENT PLAN - WELL HOUSE 9



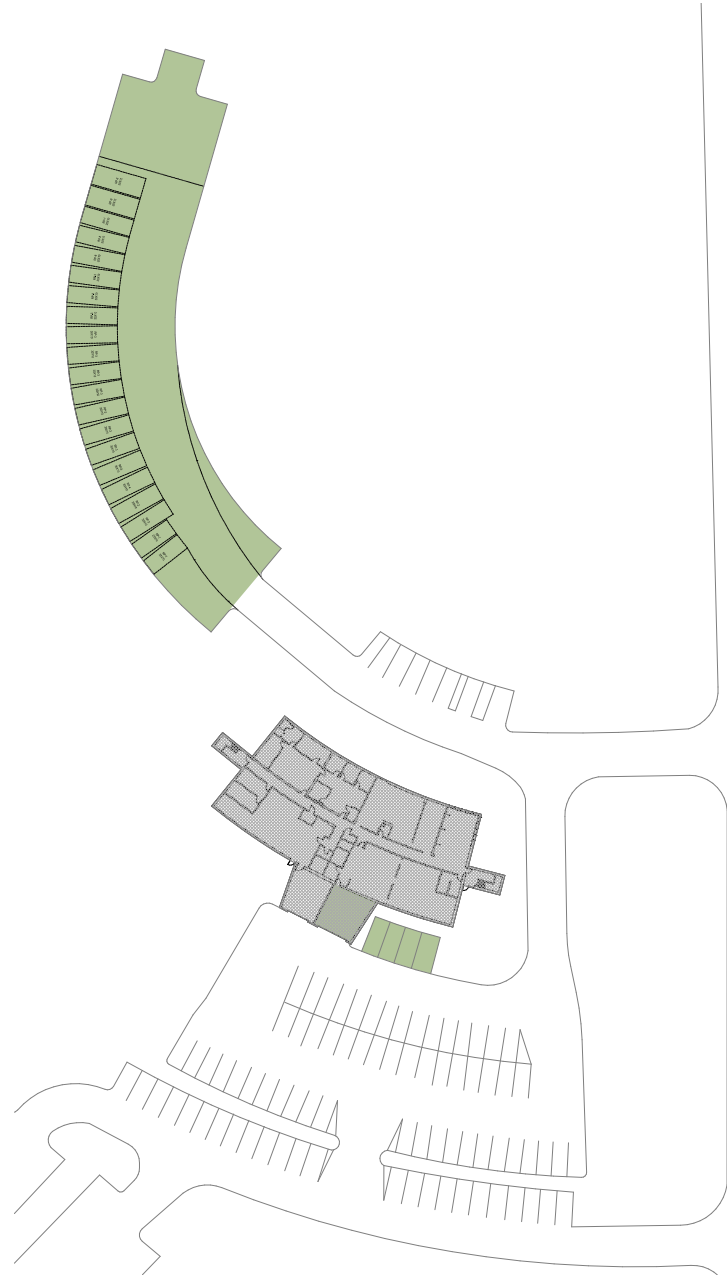
DEPARTMENT PLAN - WELL HOUSE 5



DEPARTMENT LEGEND

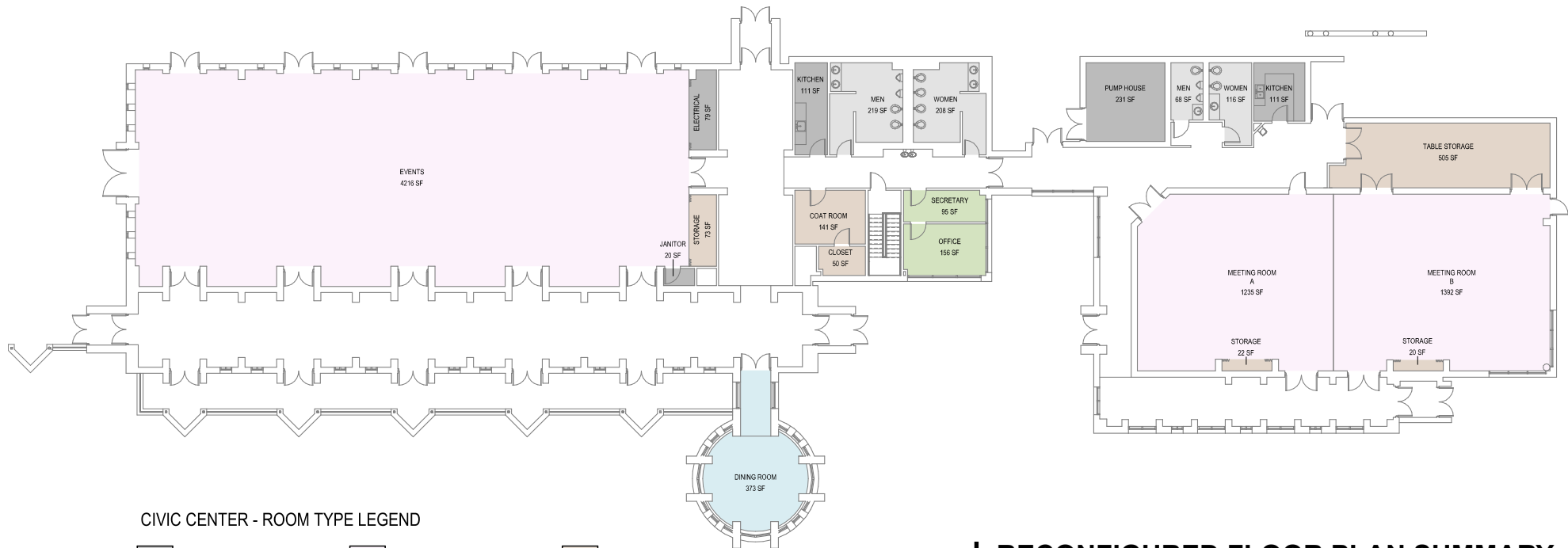
- |                  |                    |                       |
|------------------|--------------------|-----------------------|
| BUILDING CORE    | RP - CULTURAL ARTS | RP - RECREATION ADMIN |
| GENERAL BUILDING | RP - PARKS ADMIN   |                       |

RECREATION ADMINISTRATION - PARKING LOT

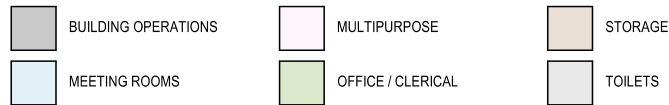


RP-OPT1-6

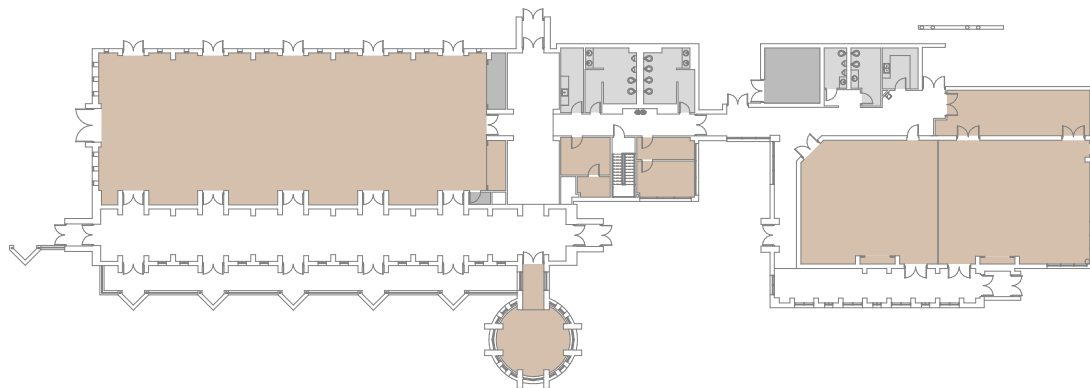
## ROOM TYPE PLAN - FIRST FLOOR



### CIVIC CENTER - ROOM TYPE LEGEND



## DEPARTMENT PLAN - FIRST FLOOR



### CIVIC CENTER - DEPARTMENT LEGEND



## RECONFIGURED FLOOR PLAN SUMMARY

Some Well House storage will still be required for recreation administration and cultural arts. Parks field operation vehicles / equipment and material storage could be relocated to the north parking lot at the Rec Admin Building. This would consolidate parks and recreation to one location where parks maintenance and administration can meet, load, and dispatch.

Relocating cultural arts functions to Franklin Loebe Center allows overflow for cultural arts to spill into the Civic Center when it's not being rented for other events. The Civic Center does not have extra storage space so storage items would need to remain at FLC.

RP-OPT1-7

**LEGAT**ARCHITECTS

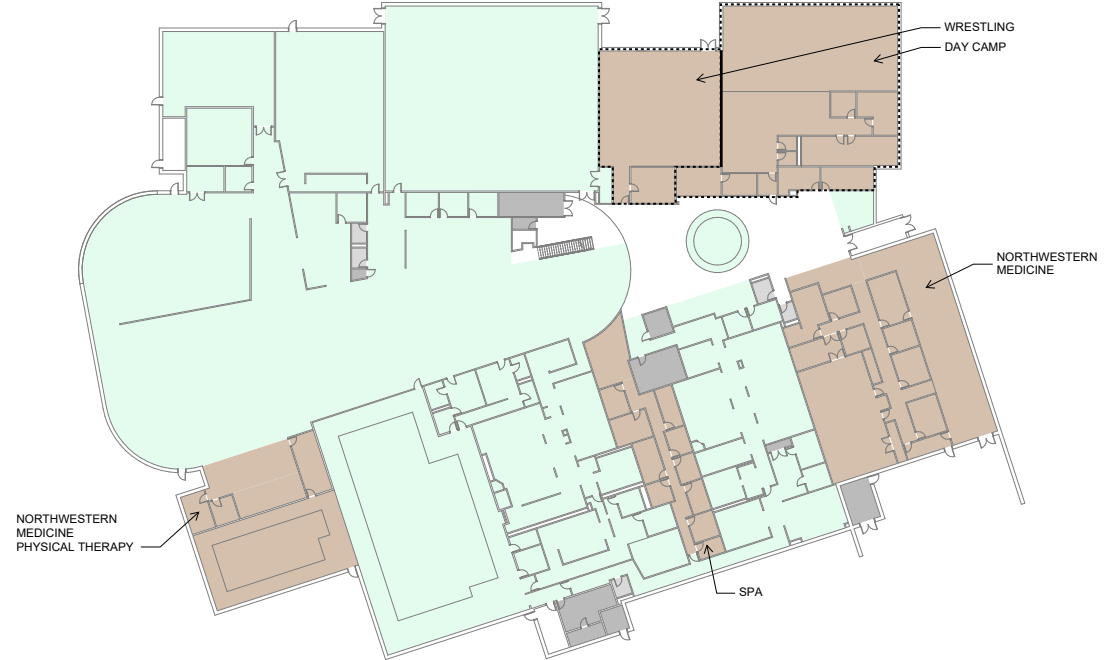
DESIGN | PERFORMANCE | SUSTAINABILITY

# HEALTH & FITNESS CENTER

## HFC - BUILDING SCHEDULE - OPTION 1

DEPARTMENT & ROOM TYPE	RECONFIGURED AREA	EXISTING AREA
<b>LEASED / RENTABLE</b>		
<b>DAY CAMP</b>		
ACTIVITY	4003 SF	0 SF
OFFICE / CLERICAL	351 SF	0 SF
STORAGE	330 SF	265 SF
TOILETS	82 SF	0 SF
<b>DAY CAMP SUMMARY:</b>	<b>4767 SF</b>	<b>265 SF</b>
<b>NORTHWESTERN MEDICINE</b>		
ACTIVITY	1859 SF	1859 SF
CLASSROOM	1276 SF	1276 SF
COMMON AREAS	2420 SF	2420 SF
MEETING ROOMS	350 SF	350 SF
OFFICE / CLERICAL	939 SF	938 SF
PHYSICAL THERAPY	1305 SF	1305 SF
STORAGE	308 SF	308 SF
<b>NORTHWESTERN MEDICINE SUMMARY:</b>	<b>8456 SF</b>	<b>8456 SF</b>
<b>PRO SHOP</b>		
SHOPPING	207 SF	207 SF
STORAGE	119 SF	119 SF
<b>PRO SHOP SUMMARY:</b>	<b>326 SF</b>	<b>326 SF</b>
<b>SPA</b>		
OFFICE / CLERICAL	113 SF	113 SF
SPA	1527 SF	1526 SF
STORAGE	163 SF	163 SF
<b>SPA SUMMARY:</b>	<b>1802 SF</b>	<b>1802 SF</b>
<b>WRESTLING</b>		
ACTIVITY	2306 SF	1278 SF
STORAGE	251 SF	96 SF
<b>WRESTLING SUMMARY:</b>	<b>2557 SF</b>	<b>1374 SF</b>
<b>LEASED / RENTABLE SUMMARY:</b>	<b>17908 SF</b>	<b>10584 SF</b>
<b>FITNESS</b>		
ACTIVITY	37262 SF	42653 SF
CLASSROOM	342 SF	342 SF
COMMON AREAS	230 SF	230 SF
LOCKER ROOMS	9676 SF	9676 SF
OFFICE / CLERICAL	1371 SF	2909 SF
STORAGE	461 SF	692 SF
TOILETS	194 SF	374 SF
<b>FITNESS SUMMARY:</b>	<b>49536 SF</b>	<b>56876 SF</b>

## DEPARTMENT PLAN - FIRST FLOOR



## RECONFIGURED FLOOR PLAN SUMMARY

Moving cultural arts to Franklin Loebe Center absorbs the wrestling room currently leased there. There is also a day camp that uses the current cultural arts building. With some modifications a Health & Fitness the under utilized office and child care area could be re-purposed for wrestling and day camp activities while retaining it's current health center functions.

### HEALTH & FITNESS CENTER - DEPARTMENT LEGEND

	BUILDING CORE		FITNESS
	GENERAL BUILDING		LEASED / RENTABLE

### HEALTH & FITNESS CENTER - ROOM TYPE LEGEND

	ACTIVITY		LOCKER ROOMS		SHOPPING
	BUILDING OPERATIONS		MEETING ROOMS		SPA
	CLASSROOM		OFFICE / CLERICAL		STORAGE
	COMMON AREAS		PHYSICAL THERAPY		TOILETS

RP-OPT1-8



ORLAND PARK

## 2022 SPACE NEEDS ANALYSIS



ROOM TYPE PLAN - FIRST FLOOR



# DEPARTMENT SCHEDULES

DEPT SCHEDULE - RECREATION ADMINISTRATION - OPTION 1					
ROOM NAME & TYPE	RECONFIGURED LOCATION	RECONFIGURED AREA	DESIRED AREA	EXISTING AREA	OCCUPANT NUMBER
COMMON AREAS					
KITCHENETTE	REC ADMIN - UPPER LEVEL	14 SF	0 SF	14 SF	
KITCHENETTE	REC ADMIN - UPPER LEVEL	16 SF	0 SF	16 SF	
COMMON AREAS SUMMARY: 2 SPACES		29 SF	0 SF	30 SF	0
MEETING ROOMS					
CONFERENCE	REC ADMIN - UPPER LEVEL	630 SF	400 SF	630 SF	
MEETING ROOMS SUMMARY: 1 ROOM		630 SF	400 SF	630 SF	0
OFFICE / CLERICAL					
DIRECTOR	REC ADMIN - UPPER LEVEL	261 SF	150 SF	261 SF	1
OFFICE	REC ADMIN - UPPER LEVEL	127 SF	0 SF	127 SF	0
OFFICE	REC ADMIN - UPPER LEVEL	158 SF	120 SF	158 SF	1
OFFICE	REC ADMIN - UPPER LEVEL	164 SF	120 SF	164 SF	1
OFFICE	REC ADMIN - UPPER LEVEL	167 SF	120 SF	167 SF	1
OFFICE	REC ADMIN - UPPER LEVEL	169 SF	120 SF	169 SF	1
OFFICE	REC ADMIN - UPPER LEVEL	169 SF	120 SF	169 SF	1
OFFICE	REC ADMIN - UPPER LEVEL	171 SF	120 SF	171 SF	1
OFFICE	REC ADMIN - UPPER LEVEL	193 SF	120 SF	193 SF	1
OPEN OFFICE	REC ADMIN - UPPER LEVEL	203 SF	160 SF	203 SF	2
OPEN OFFICE	REC ADMIN - UPPER LEVEL	410 SF	400 SF	410 SF	5
RECEPTION	REC ADMIN - UPPER LEVEL	560 SF	240 SF	560 SF	3
OFFICE / CLERICAL SUMMARY: 12 ROOMS		2752 SF	1790 SF	2752 SF	18
STORAGE					
CELL	REC ADMIN - LOWER LEVEL	47 SF	0 SF	47 SF	
CELL	REC ADMIN - LOWER LEVEL	49 SF	0 SF	0 SF	
CELL	REC ADMIN - LOWER LEVEL	49 SF	0 SF	49 SF	
CELL	REC ADMIN - LOWER LEVEL	50 SF	0 SF	0 SF	
CELL	REC ADMIN - LOWER LEVEL	50 SF	0 SF	0 SF	
CELL	REC ADMIN - LOWER LEVEL	50 SF	0 SF	50 SF	
CELL	REC ADMIN - LOWER LEVEL	51 SF	0 SF	0 SF	
CELL	REC ADMIN - LOWER LEVEL	52 SF	0 SF	0 SF	
CELL	REC ADMIN - LOWER LEVEL	59 SF	0 SF	59 SF	
CELL	REC ADMIN - LOWER LEVEL	59 SF	0 SF	59 SF	
CELLBLOCK	REC ADMIN - LOWER LEVEL	135 SF	500 SF	135 SF	
CELLBLOCK	REC ADMIN - LOWER LEVEL	197 SF	0 SF	0 SF	
HOLDING AREA	REC ADMIN - LOWER LEVEL	650 SF	650 SF	630 SF	
STORAGE	REC ADMIN - LOWER LEVEL	39 SF	39 SF	39 SF	
STORAGE	REC ADMIN - LOWER LEVEL	51 SF	50 SF	191 SF	
STORAGE	REC ADMIN - LOWER LEVEL	69 SF	69 SF	69 SF	
STORAGE	REC ADMIN - LOWER LEVEL	327 SF	375 SF	327 SF	
STORAGE	REC ADMIN - LOWER LEVEL	507 SF	581 SF	507 SF	
CLOSET	REC ADMIN - UPPER LEVEL	8 SF	8 SF	8 SF	
CLOSET	REC ADMIN - UPPER LEVEL	49 SF	49 SF	49 SF	
FILES	REC ADMIN - UPPER LEVEL	54 SF	0 SF	10 SF	
STORAGE	REC ADMIN - UPPER LEVEL	60 SF	60 SF	60 SF	
STORAGE	REC ADMIN - UPPER LEVEL	62 SF	60 SF	62 SF	
STORAGE	REC ADMIN - UPPER LEVEL	65 SF	65 SF	65 SF	
STORAGE	REC ADMIN - UPPER LEVEL	94 SF	0 SF	0 SF	
REC ADMIN EVENTS STORAGE	WELL HOUSE 9	1225 SF	688 SF	688 SF	
STORAGE SUMMARY: 26 ROOMS		4106 SF	3194 SF	3104 SF	0

RECREATION ADMINISTRATION SUMMARY: 7517 SF (NET) 5384 SF (NET) 6516 SF (NET) 18 STAFF

DEPARTMENT SCHEDULE - PARKS - OPTION 1					
ROOM NAME & TYPE	RECONFIGURED LOCATION	RECONFIGURED AREA	DESIRED AREA	EXISTING AREA	OCCUPANT NUMBER
FIELD OPERATIONS					
FIELD OPERATIONS STORAGE	RECREATION ADMINISTRATION	3718 SF	0 SF	1200 SF	
FIELD OPERATIONS STORAGE -	REC ADMIN - LOWER LEVEL	266 SF	3000 SF	2090 SF	
FIELD OPERATIONS VEHICLES	RECREATION ADMINISTRATION	17338 SF	12000 SF		
FIELD OPERATIONS SUMMARY: 3 AREAS		21056 SF	15000 SF	3290 SF	0
MAINTENANCE VEHICLES					
PARKS MAINTENANCE VEHICLES	RECREATION ADMINISTRATION	407 SF	1130 SF	0 SF	6
PARKS MAINTENANCE VEHICLES	RECREATION ADMINISTRATION	911 SF	2270 SF		
MAINTENANCE VEHICLES SUMMARY: 2 SPACES		1319 SF	3400 SF	0 SF	6
OFFICE / CLERICAL					
PARKS ADMIN	RECREATION ADMINISTRATION - UPPER LEVEL	305 SF	80 SF	130 SF	1
PARKS OFFICE	RECREATION ADMINISTRATION - UPPER LEVEL	205 SF	120 SF	189 SF	1
PARKS MAINTENANCE HOTELING		0 SF	60 SF	0 SF	
OFFICE / CLERICAL SUMMARY: 2 ROOMS		509 SF	200 SF	319 SF	2

RP-PARKS SUMMARY: 22884 SF (NET) 18660 SF (NET) 3619 SF (NET) 8 STAFF

RP-OPT1-10



ORLAND PARK

2022 SPACE NEEDS ANALYSIS

DEPARTMENT SCHEDULE - CULTURAL ARTS - OPTION 1					
ROOM NAME & TYPE	RECONFIGURED LOCATION	RECONFIGURED AREA	DESIRED AREA	EXISTING AREA	OCCUPANT NUMBER
<b>ACTIVITY</b>					
ARTS & CRAFTS	FRANKLIN LOEBE CENTER	715 SF	1000 SF	1052 SF	
DANCE STUDIO	FRANKLIN LOEBE CENTER	1268 SF	1500 SF	954 SF	
DANCE STUDIO	FRANKLIN LOEBE CENTER	2186 SF	2350 SF	1036 SF	
<b>ACTIVITY SUMMARY: 3 ROOMS</b>		<b>4168 SF</b>	<b>4850 SF</b>	<b>3042 SF</b>	<b>0</b>
<b>COMMON AREAS</b>					
GREEN ROOM	FRANKLIN LOEBE CENTER	197 SF	0 SF	306 SF	
KITCHEN	FRANKLIN LOEBE CENTER	79 SF	200 SF	215 SF	
PARENT WAITING / SENIOR LIVING ROOM	FRANKLIN LOEBE CENTER	986 SF	1200 SF	1997 SF	
<b>COMMON AREAS SUMMARY: 3 SPACES</b>		<b>1262 SF</b>	<b>1400 SF</b>	<b>2518 SF</b>	<b>0</b>
<b>MULTIPURPOSE</b>					
MULTIPURPOSE	FRANKLIN LOEBE CENTER	954 SF	1000 SF	805 SF	
MULTIPURPOSE W/ DIVIDER	FRANKLIN LOEBE CENTER	1148 SF	2000 SF	1984 SF	
MULTIPURPOSE: GYM / THEATRE / RECITALS	FRANKLIN LOEBE CENTER	7148 SF	6500 SF	3087 SF	
PIANO ROOM / REHERSAL / MULTIPURPOSE	FRANKLIN LOEBE CENTER	986 SF	1000 SF	1207 SF	
<b>MULTIPURPOSE SUMMARY: 4 SPACES</b>		<b>10237 SF</b>	<b>10500 SF</b>	<b>7083 SF</b>	<b>0</b>
<b>MUSIC</b>					
INSTRUMENT STORAGE	FRANKLIN LOEBE CENTER	116 SF	200 SF	136 SF	
PIANO ROOM	FRANKLIN LOEBE CENTER	N/A	200 SF	194 SF	
PRACTICE	FRANKLIN LOEBE CENTER	88 SF	100 SF	0 SF	
PRACTICE	FRANKLIN LOEBE CENTER	88 SF	100 SF	0 SF	
<b>MUSIC SUMMARY: 4 ROOMS</b>		<b>292 SF</b>	<b>600 SF</b>	<b>330 SF</b>	<b>0</b>
<b>OFFICE / CLERICAL</b>					
OFFICE	FRANKLIN LOEBE CENTER	99 SF	120 SF	160 SF	1
RECEPTION	FRANKLIN LOEBE CENTER	96 SF	0 SF	86 SF	
RECEPTION / TICKETS	FRANKLIN LOEBE CENTER	191 SF	0 SF	0 SF	
<b>OFFICE / CLERICAL SUMMARY: 3 ROOMS</b>		<b>385 SF</b>	<b>120 SF</b>	<b>246 SF</b>	<b>1</b>
<b>STORAGE</b>					
COSTUME STORAGE	FRANKLIN LOEBE CENTER	83 SF	0 SF	0 SF	
COSTUME STORAGE	FRANKLIN LOEBE CENTER	528 SF	600 SF	458 SF	
DIVIDER STORAGE	FRANKLIN LOEBE CENTER	25 SF	0 SF	0 SF	
PAGENT STORAGE	FRANKLIN LOEBE CENTER	98 SF	0 SF	0 SF	
PAGENT STORAGE	FRANKLIN LOEBE CENTER	451 SF	600 SF	569 SF	
STOR.	FRANKLIN LOEBE CENTER	15 SF	0 SF	0 SF	
STOR.	FRANKLIN LOEBE CENTER	15 SF	0 SF	0 SF	
STOR.	FRANKLIN LOEBE CENTER	15 SF	0 SF	15 SF	
STOR.	FRANKLIN LOEBE CENTER	20 SF	0 SF	0 SF	
STORAGE	FRANKLIN LOEBE CENTER	115 SF	0 SF	0 SF	
STORAGE	FRANKLIN LOEBE CENTER	115 SF	0 SF	0 SF	
STORAGE	FRANKLIN LOEBE CENTER	142 SF	0 SF	0 SF	
STORAGE	FRANKLIN LOEBE CENTER	157 SF	0 SF	0 SF	
STORAGE	FRANKLIN LOEBE CENTER	245 SF	1500 SF	1386 SF	
TABLE STOR.	FRANKLIN LOEBE CENTER	72 SF	0 SF	0 SF	
TABLE STORAGE	FRANKLIN LOEBE CENTER	256 SF	0 SF	0 SF	
TABLE STORAGE	FRANKLIN LOEBE CENTER	301 SF	600 SF	607 SF	
THEATRE STORAGE	FRANKLIN LOEBE CENTER	1278 SF	650 SF	611 SF	
THEATRE STORAGE	WELL HOUSE 5	1225 SF	1225 SF	1225 SF	
<b>STORAGE SUMMARY: 19 ROOMS</b>		<b>5157 SF</b>	<b>5175 SF</b>	<b>4871 SF</b>	<b>0</b>

CULTURAL ARTS SUMMARY: 21502 SF (NET) 22645 SF (NET) 18090 SF (NET) 1 STAFF



# **OPT2**

**RECONFIGURED  
SPACES**

① Village Hall  
14700 Ravinia Avenue

⑩ Park Administration & Garage  
14671 West Avenue

⑪ Orland Park Health & Fitness Center  
15430 West Avenue  
Wrestling to relocate to this building.  
Re-purpose into Sports Training Facility.

⑫ SportsPlex  
11301 159th Street

⑬ Police Department  
15100 Ravinia Avenue

⑭ Veterans Center  
15045 West Avenue

② Civic Center  
14700 Ravinia Avenue  
Used for events.  
Overflow for Cultural Arts Programs  
Potential Day Camp functions

③ Franklin Loebe Center  
14695 Ravinia Avenue  
Cultural Arts Department to relocate here.  
Preschool to be vacated.  
Wrestling to relocate to (11).

④ Recreation Administration  
14690 Ravinia Avenue  
Recreation Administration Department to remain.  
Parks Department, Recreation Administration Storage,  
Parks Maintenance Vans, and Parks Field Operations  
to relocate here.

⑤ Centennial Concessions/Offices  
15600 West Avenue

⑥ Centennial Park Aquatic Center  
15600 West Avenue

⑦ Centennial Park Ice Rink  
15600 West Avenue

⑧ Cultural Arts Center  
14760 Park Lane

⑨ Orland Park History Museum  
14415 Beacon Avenue

⑮ Public Works Department  
15055 Ravinia Avenue

⑯ Bulk Storage Facility  
10401 159th Avenue

⑰ Thistlewood Pump Station  
8800 Thistlewood Lane

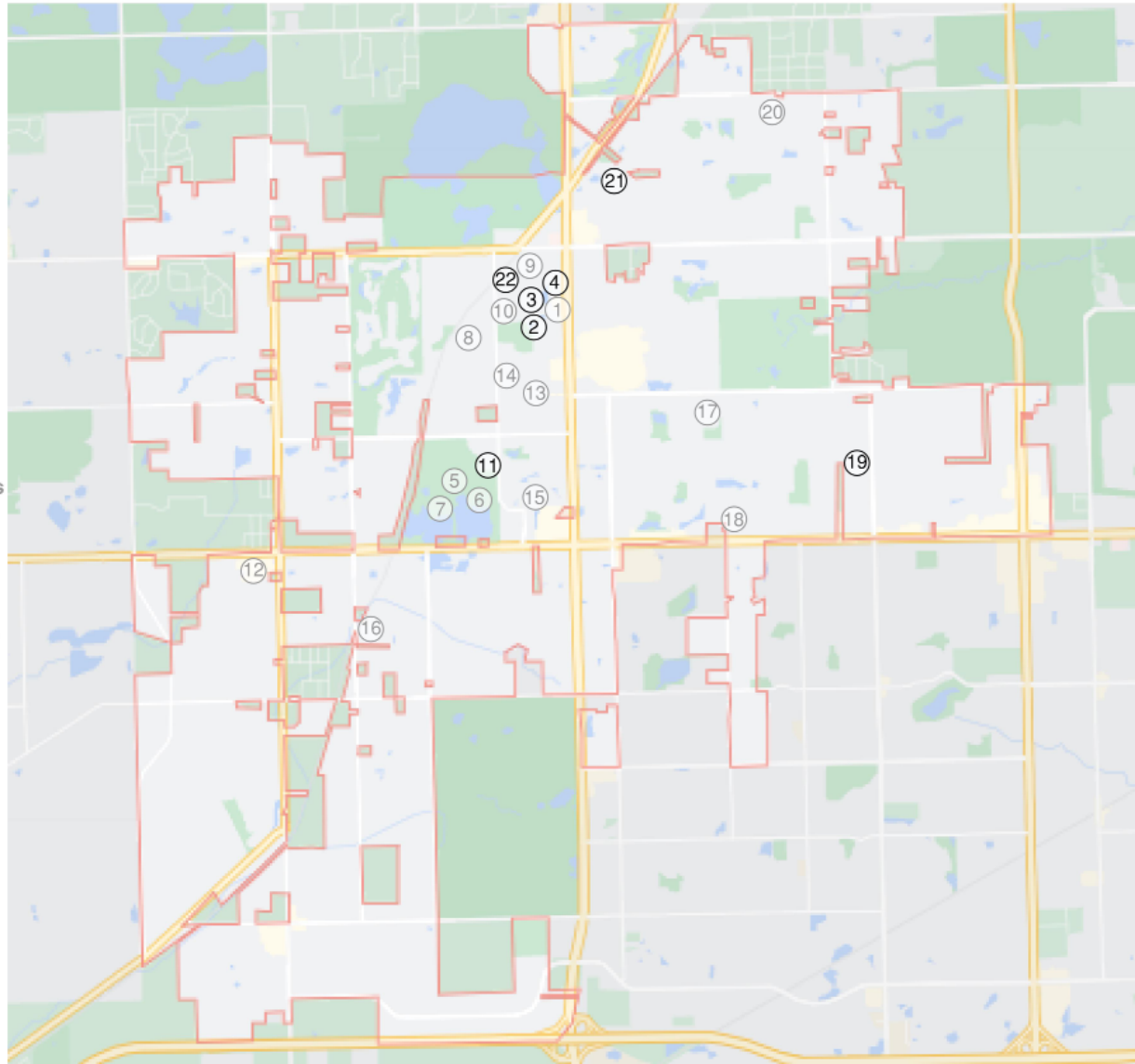
⑱ Well House #10  
8799 159th Street

⑲ Well House #5  
7350 Wheeler Drive  
Theater Storage

⑳ Well House #7  
13600 Cherry Lane

㉑ Well House #9  
8225 140th Street  
Recreation & Parks Administration Storage

㉒ John Humphrey House  
5830 W. 144th Place  
History Museum Storage and Display



## ORLAND PARK MASTER PLAN - RECREATION & PARKS: OPTION 2

### SPACE & PROGRAMMING NEEDS ASSESSMENT

#### VILLAGE OF ORLAND PARK

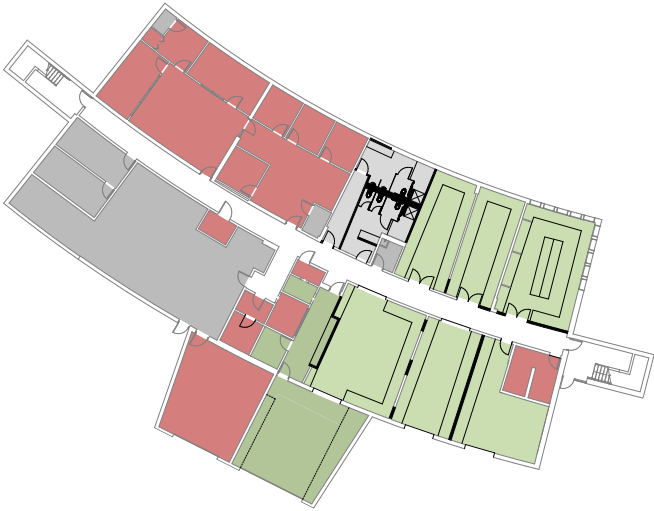
LEGATARCHITECTS  
DESIGN | PERFORMANCE | SUSTAINABILITY

LEGEND  
# BUILDING NUMBER LABEL

RECREATION ADMINISTRATION

OPTION 2A - RENOVATION

DEPARTMENT PLAN - LOWER LEVEL



REC ADMIN - BUILDING SCHEDULE - OPTION 2A			
DEPARTMENT & ROOM TYPE	RECONFIGURED AREA	DESIRED AREA	EXISTING AREA
FLEX			
OFFICE / CLERICAL	352 SF	0 SF	0 SF
FLEX SUMMARY:	352 SF	0 SF	0 SF
GENERAL BUILDING			
COMMON AREAS	213 SF	200 SF	171 SF
LOCKER ROOMS	780 SF	0 SF	780 SF
MULTIPURPOSE	1356 SF	1100 SF	1059 SF
STORAGE	10 SF	10 SF	10 SF
GENERAL BUILDING SUMMARY:	2489 SF	1310 SF	2020 SF
PARKS ADMINISTRATION			
OFFICE / CLERICAL	630 SF	270 SF	329 SF
FIELD OPERATIONS STORAGE	4425 SF	3000 SF	3290 SF
FIELD OPERATIONS VEHICLES	16897 SF	12000 SF	*
PARKS MAINTENANCE VEHICLES	1318 SF	3400 SF	*
PARKS ADMINISTRATION SUMMARY:	23270 SF	18670 SF	3619 SF
RECREATION ADMINISTRATION			
COMMON AREAS	0 SF	0 SF	30 SF
MEETING ROOMS	630 SF	400 SF	630 SF
OFFICE / CLERICAL	2595 SF	1790 SF	3256 SF
STORAGE	3300 SF	3194 SF	3104 SF
RECREATION ADMINISTRATION SUMMARY:	6525 SF	5384 SF	7020 SF

\* NOT CALCULATED

ROOM TYPE PLAN - LOWER LEVEL



RECREATION ADMINISTRATION - DEPARTMENT LEGEND



RECREATION ADMINISTRATION - ROOM TYPE LEGEND



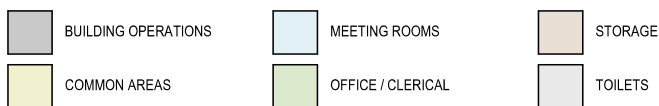
RP-OPT2-2



## ROOM TYPE PLAN - UPPER LEVEL



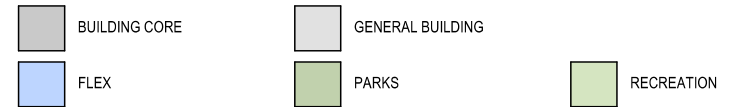
### RECREATION ADMINISTRATION - ROOM TYPE LEGEND



## DEPARTMENT PLAN - UPPER LEVEL



### RECREATION ADMINISTRATION - DEPARTMENT LEGEND



## RECONFIGURED FLOOR PLAN SUMMARY

In Option 2 the cell blocks and locker rooms are removed and the lower level is renovated to provide large flexible storage rooms for Recreation. A hoteling area for Parks maintenance is located just off the garage entry.

On the upper level, Parks administration is located with Recreation administration with minimal renovation and cubicle reconfiguration which gets more staff in one area. The kitchenettes are removed and a renovated larger kitchen is located off a multipurpose room which can be used as a breakroom and/or a meeting room.

RP-OPT2-3

**LEGAT**ARCHITECTS

DESIGN | PERFORMANCE | SUSTAINABILITY

DEPARTMENT PLAN - LOWER LEVEL



REC ADMIN - BUILDING SCHEDULE - OPTION 2B			
DEPARTMENT & ROOM TYPE	RECONFIGURED AREA	DESIRED AREA	EXISTING AREA
FLEX			
OFFICE / CLERICAL	351 SF	0 SF	0 SF
FLEX SUMMARY:	351 SF	0 SF	0 SF
GENERAL BUILDING			
COMMON AREAS	213 SF	200 SF	171 SF
LOCKER ROOMS	0 SF	0 SF	780 SF
MULTIPURPOSE	1261 SF	1100 SF	1059 SF
STORAGE	10 SF	10 SF	10 SF
GENERAL BUILDING SUMMARY:	2394 SF	1310 SF	2020 SF
RP-PARKS ADMIN			
OFFICE / CLERICAL	453 SF	270 SF	329 SF
PARKS MAINTENANCE VEHICLES	2016 SF	3400 SF	*
RP-PARKS ADMIN SUMMARY:	2469 SF	3670 SF	329 SF
RP-RECREATION ADMIN			
COMMON AREAS	0 SF	0 SF	30 SF
MEETING ROOMS	710 SF	400 SF	630 SF
OFFICE / CLERICAL	1977 SF	1790 SF	3256 SF
STORAGE	3843 SF	3194 SF	3104 SF
RP-RECREATION ADMIN SUMMARY:	6530 SF	5384 SF	7020 SF

\* NOT CALCULATED

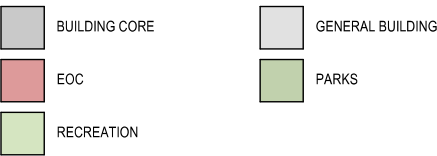
RP-OPT2-4



ROOM TYPE PLAN - LOWER LEVEL



RECREATION ADMINISTRATION - DEPARTMENT LEGEND



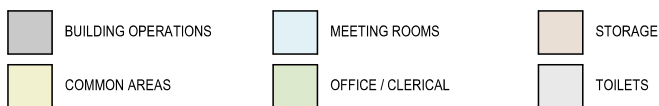
RECREATION ADMINISTRATION - ROOM TYPE LEGEND



## ROOM TYPE PLAN - UPPER LEVEL



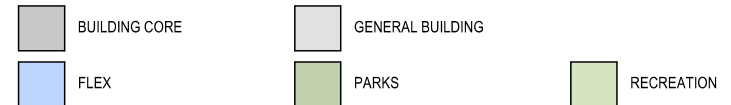
### RECREATION ADMINISTRATION - ROOM TYPE LEGEND



## DEPARTMENT PLAN - UPPER LEVEL



### RECREATION ADMINISTRATION - DEPARTMENT LEGEND



## RECONFIGURED FLOOR PLAN SUMMARY

As an alternate in Option 2, Option 2B requires more extensive renovation but creates the most efficient use of space.

The lower level is the same as Option 2A except with an added maintenance garage and elevator.

The upper level, with some additional renovation can achieve the goal to get all staff in one area. Additional storage is created along with a larger care packaging storage room. Flex office space is still available for other village departments or future growth.

RP-OPT2-5

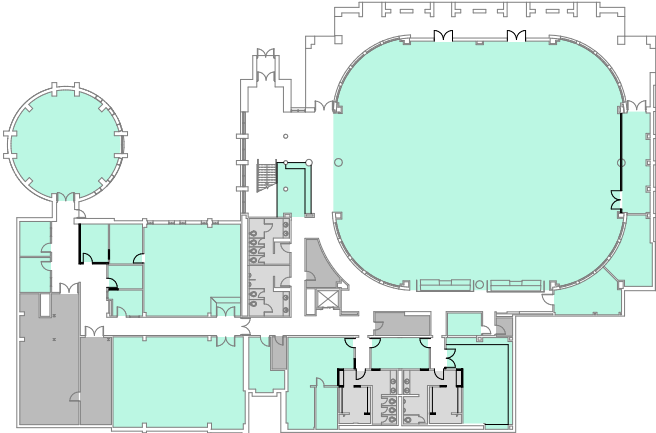
**LEGAT**ARCHITECTS

DESIGN | PERFORMANCE | SUSTAINABILITY



# FRANKLIN LOEBE CENTER

## DEPARTMENT PLAN - LOWER LEVEL

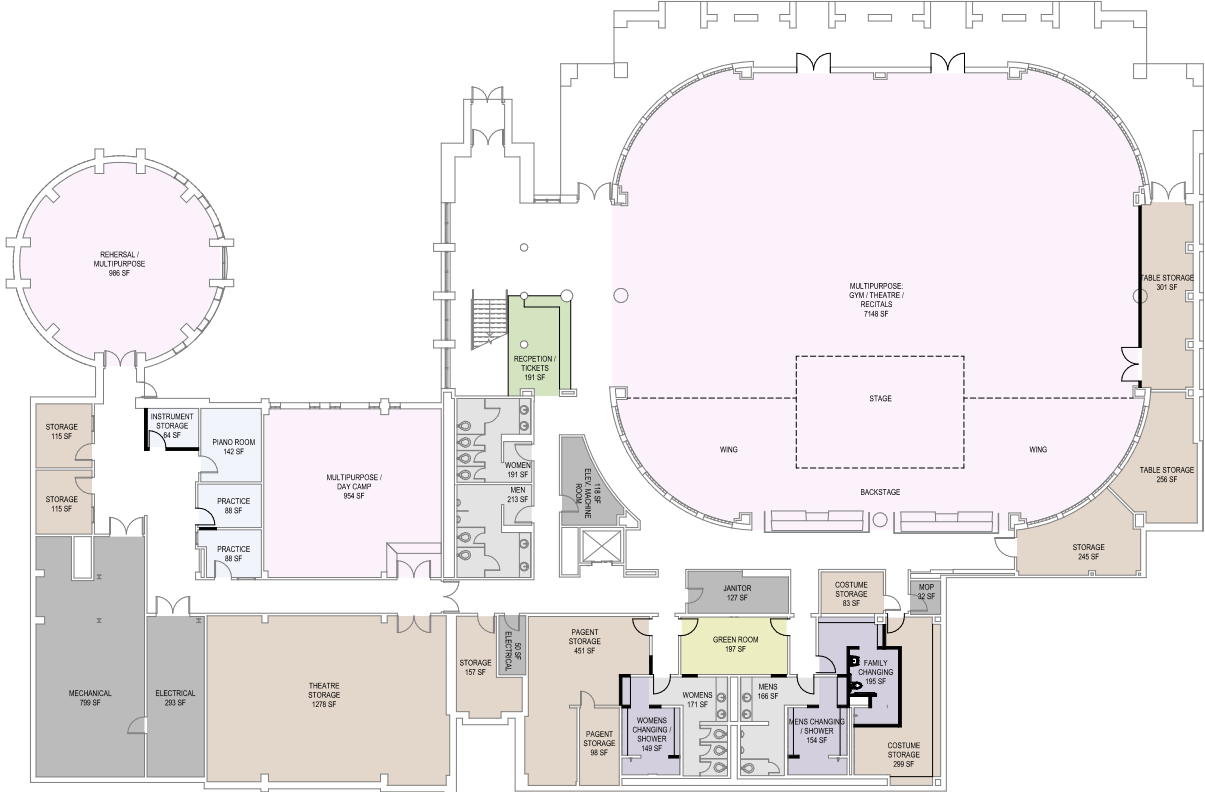


FRANKLIN LOEBE CENTER - DEPARTMENT LEGEND

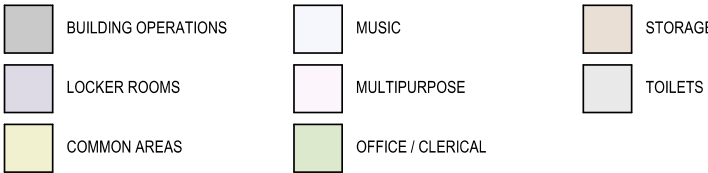


FLC - BUILDING SCHEDULE - OPTION 2			
DEPARTMENT & ROOM TYPE	RECONFIGURED AREA	DESIRED AREA	EXISTING AREA
<b>GENERAL BUILDING</b>			
ACTIVITY	3572 SF	0 SF	3572 SF
LOCKER ROOMS	498 SF	0 SF	1813 SF
GENERAL BUILDING SUMMARY:	4070 SF	0 SF	5385 SF
<b>CULTURAL ARTS</b>			
ACTIVITY	4168 SF	4850 SF	3042 SF
COMMON AREAS	1262 SF	1400 SF	2518 SF
MULTIPURPOSE	10237 SF	10500 SF	7056 SF
MUSIC	383 SF	600 SF	330 SF
OFFICE / CLERICAL	385 SF	120 SF	246 SF
STORAGE	3561 SF	5175 SF	4871 SF
CULTURAL ARTS SUMMARY:	19996 SF	22645 SF	18063 SF

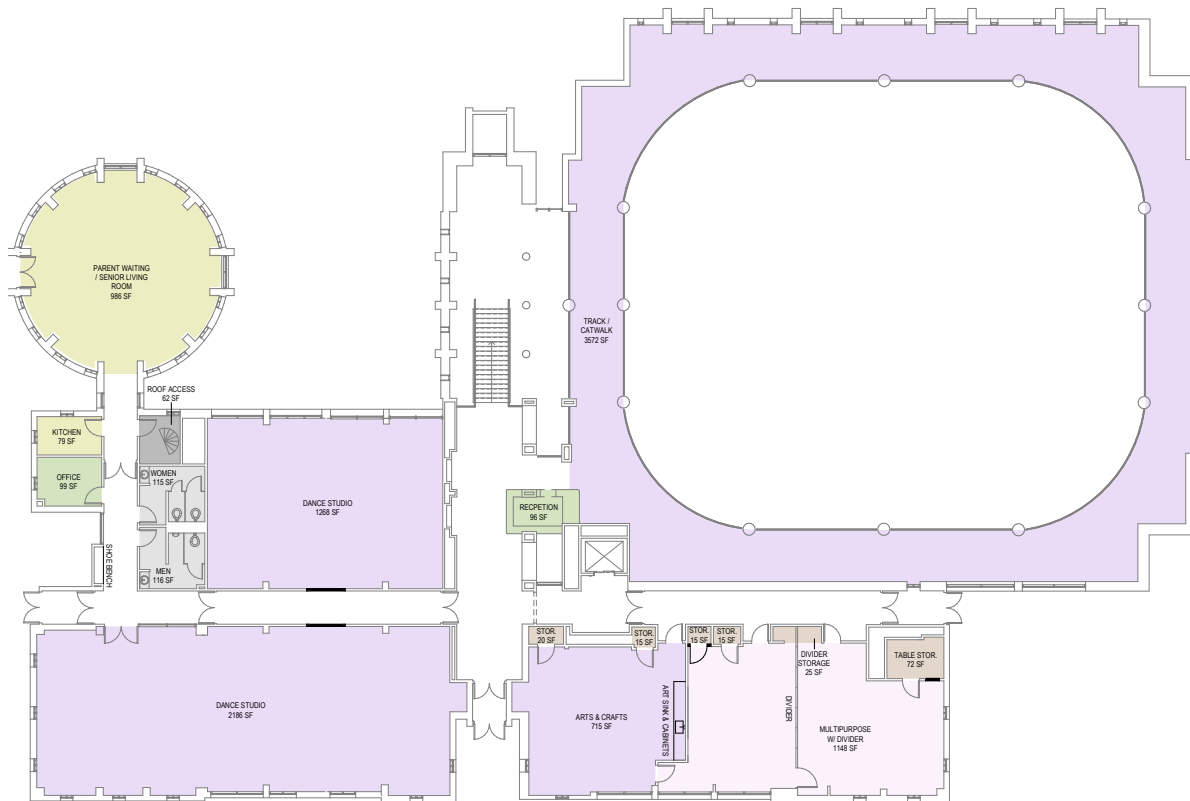
## ROOM TYPE PLAN - LOWER LEVEL



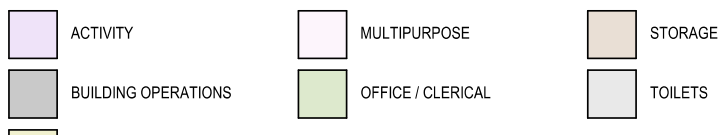
FRANKLIN LOEBE CENTER - LOWER LEVEL - ROOM TYPE LEGEND



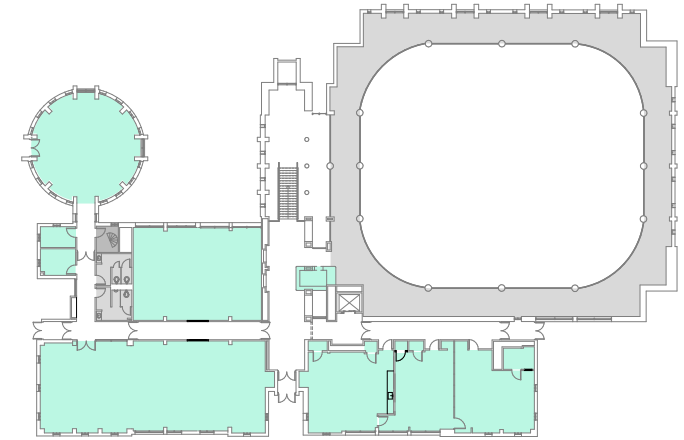
## ROOM TYPE PLAN - UPPER LEVEL



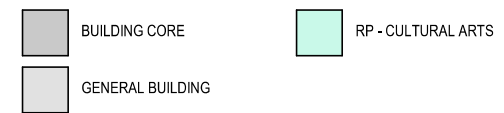
FRANKLIN LOEBE CENTER - UPPER LEVEL - ROOM TYPE LEGEND



## DEPARTMENT PLAN - UPPER LEVEL



FRANKLIN LOEBE CENTER - DEPARTMENT LEGEND



## RECONFIGURED FLOOR PLAN SUMMARY

The Franklin Loeb Center in Option 2, is the same as Option 1 with a few minor changes. An additional family / gender neutral changing room is included in this version as well as a dedicated piano room. In Option 1 the piano room was located in the larger rotunda room. This version has a little less storage due to the family / gender neutral changing room and the additional piano room reduces instrument storage. A multipurpose room could be scheduled for day camp purposes as well as the gym for day camp activities. For both options Well House 5 would need to remain as storage space for cultural arts.

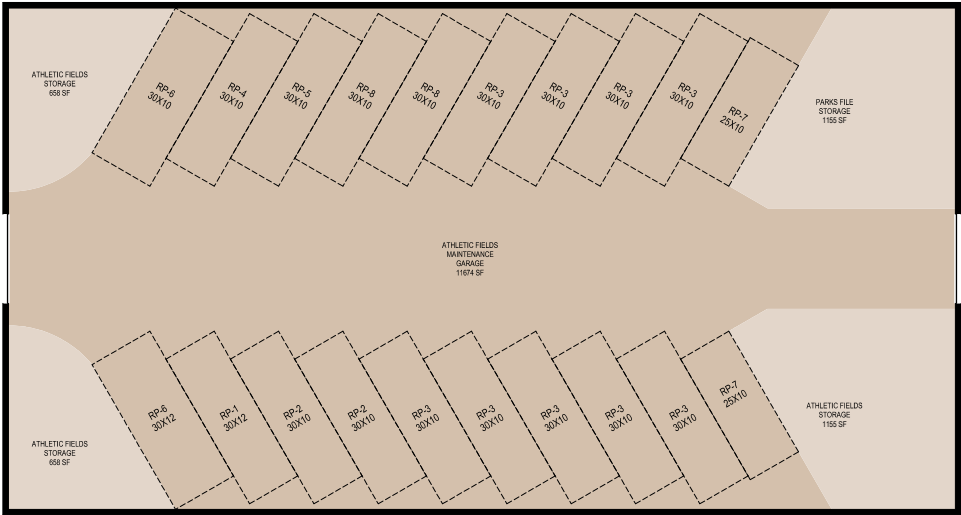
RP-OPT2-7

**LEGAT**ARCHITECTS

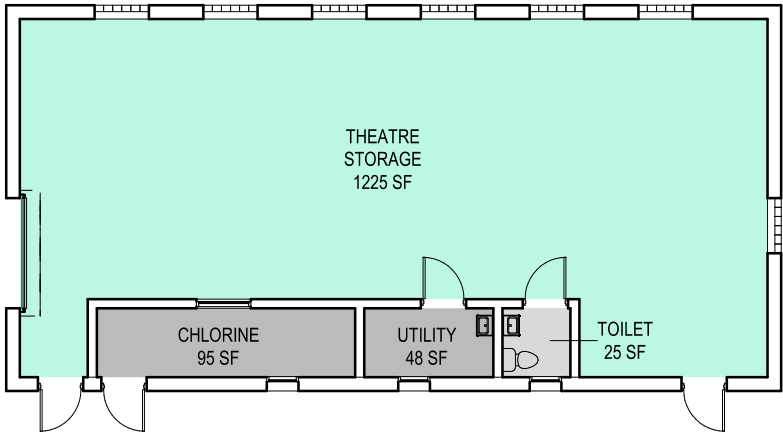
DESIGN | PERFORMANCE | SUSTAINABILITY

# SUPPLEMENTARY BUILDINGS / SITES






## PRE-ENGINEERED BUILDING - OPTION 2B



## DEPARTMENT PLAN - WELL HOUSE 5



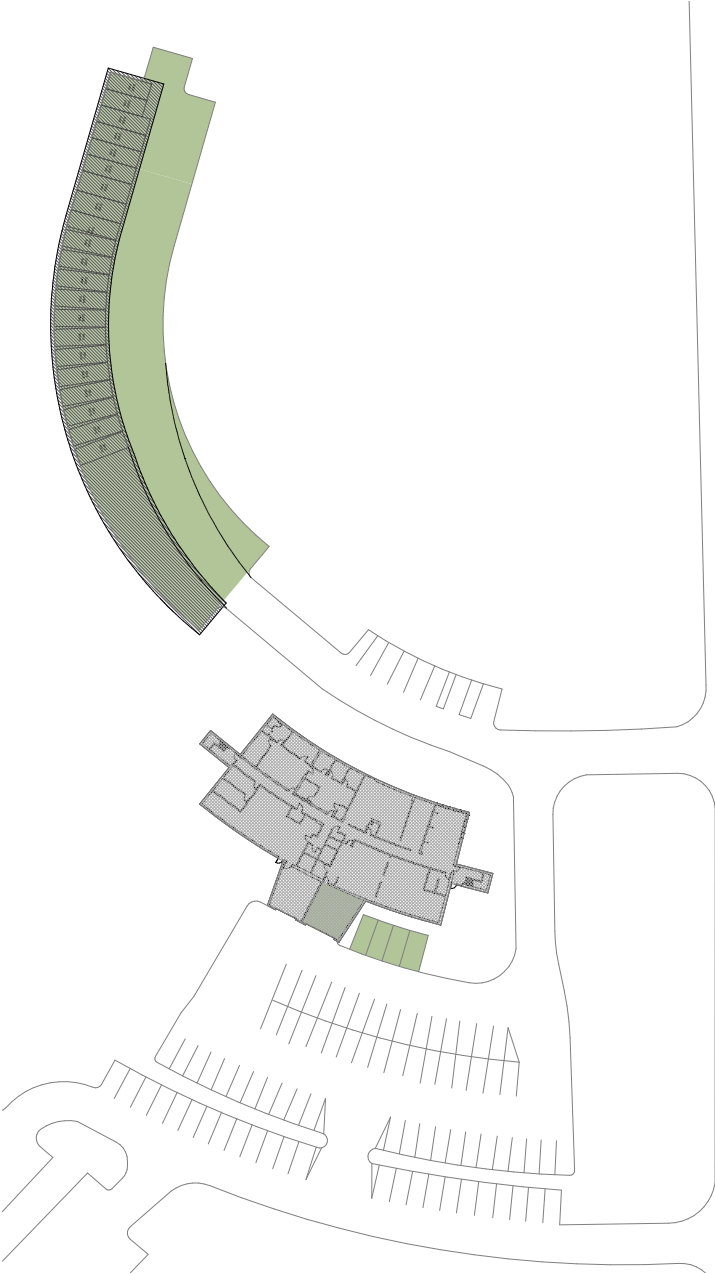
### DEPARTMENT LEGEND

	BUILDING CORE		RP - CULTURAL ARTS		RP - RECREATION ADMIN
	GENERAL BUILDING		RP - PARKS ADMIN		

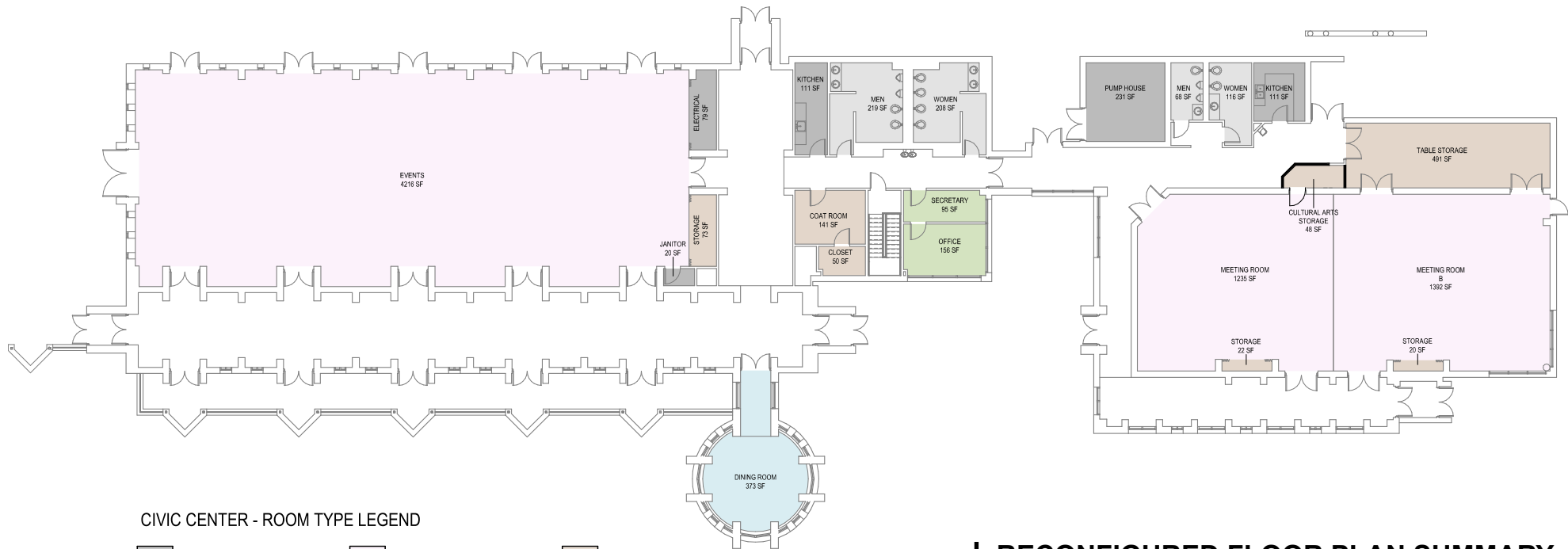
RP-OPT2-8



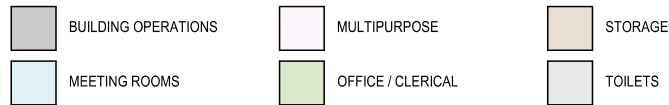
## RECREATION ADMINISTRATION - PARKING LOT - OPT-2A



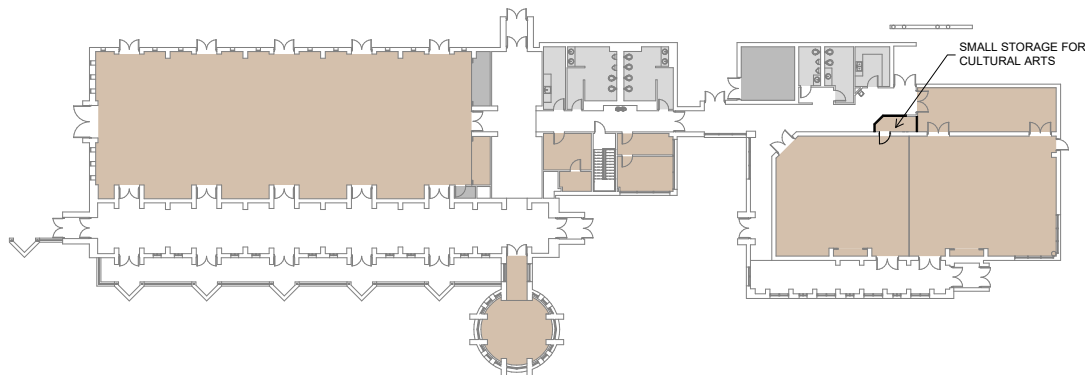
## ROOM TYPE PLAN - FIRST FLOOR



CIVIC CENTER - ROOM TYPE LEGEND



## DEPARTMENT PLAN - FIRST FLOOR



CIVIC CENTER - DEPARTMENT LEGEND



## RECONFIGURED FLOOR PLAN SUMMARY

There are 2 suggestions for Parks field maintenance vehicles / equipment and material storage. Option 2A is to provide a covered storage area in the north parking lot at the Rec Admin building. This would consolidate most of parks with Recreation and Parks administration. An alternate would be to provide a large maintenance garage at the current Parks Admin building site to keep field operations near fields and fully protect equipment from the elements.

As in Option 1, Well House storage would still be required for cultural arts.

The Civic Center would still function as overflow for cultural arts. A small storage room is added for cultural arts programs.

RP-OPT2-9

**LEGAT**ARCHITECTS

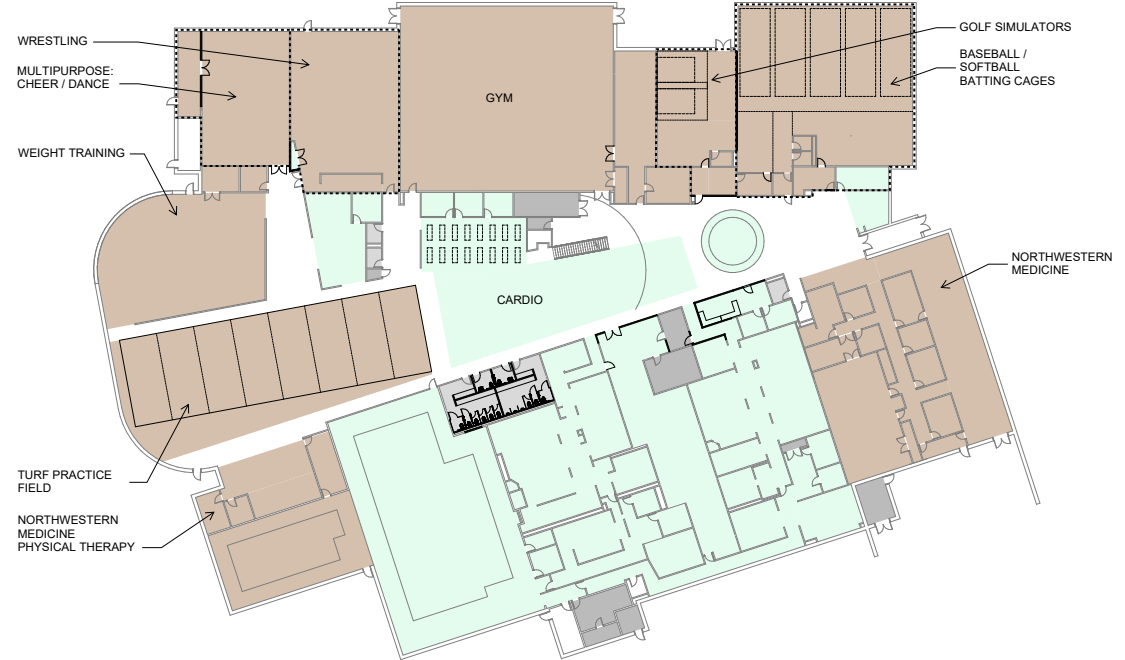
DESIGN | PERFORMANCE | SUSTAINABILITY

# HEALTH & FITNESS CENTER

## HFC - BUILDING SCHEDULE - OPTION 2

DEPARTMENT & ROOM TYPE	RECONFIGURED AREA	EXISTING AREA
<b>LEASED / RENTABLE</b>		
<b>BASEBALL / SOFTBALL</b>		
ACTIVITY	4408 SF	0 SF
STORAGE	279 SF	0 SF
<b>BASEBALL / SOFTBALL SUMMARY:</b>	<b>4687 SF</b>	<b>0 SF</b>
<b>GOLF</b>		
ACTIVITY	1379 SF	0 SF
STORAGE	127 SF	0 SF
<b>GOLF SUMMARY:</b>	<b>1506 SF</b>	<b>0 SF</b>
<b>INDOOR SPORTS / COURTS</b>		
ACTIVITY	2490 SF	0 SF
MULTIPURPOSE	8109 SF	0 SF
STORAGE	1640 SF	0 SF
<b>INDOOR SPORTS / COURTS SUMMARY:</b>	<b>12239 SF</b>	<b>0 SF</b>
<b>NORTHWESTERN MEDICINE</b>		
ACTIVITY	1859 SF	1859 SF
CLASSROOM	1276 SF	1276 SF
COMMON AREAS	2420 SF	2420 SF
MEETING ROOMS	350 SF	350 SF
OFFICE / CLERICAL	939 SF	938 SF
PHYSICAL THERAPY	1305 SF	1305 SF
STORAGE	308 SF	308 SF
<b>NORTHWESTERN MEDICINE SUMMARY:</b>	<b>8456 SF</b>	<b>8456 SF</b>
<b>SPORTS / TURF FIELD</b>		
ACTIVITY	8403 SF	0 SF
STORAGE	256 SF	0 SF
<b>SPORTS / TURF FIELD SUMMARY:</b>	<b>8659 SF</b>	<b>0 SF</b>
<b>LEASED / RENTABLE SUMMARY:</b>	<b>35547 SF</b>	<b>10584 SF</b>
<b>FITNESS</b>		
ACTIVITY	14842 SF	42653 SF
COMMON AREAS	360 SF	342 SF
LOCKER ROOMS	8731 SF	9676 SF
OFFICE / CLERICAL	1151 SF	2909 SF
STORAGE	2615 SF	692 SF
<b>FITNESS SUMMARY:</b>	<b>27699 SF</b>	<b>56502 SF</b>

## DEPARTMENT PLAN - FIRST FLOOR



## RECONFIGURED FLOOR PLAN SUMMARY

In consideration of HFC remaining a village asset, this option looks to re-purpose the building into a sports training facility that could be rented out to local sports teams for indoor practice. Batting cages, pitching, golf simulators, and putting in combination with a multipurpose gym, turf practice field, weight and cardio training, and multipurpose cheer / dance room would allow sports of any kind to use this space year round. The current wrestling program could relocate here and Northwestern Medicine could continue to do physical therapy with the pool and cardio areas. The main pool could also be rented out for swim team practice and potentially be a swim annex for SportsPlex.

### HEALTH & FITNESS CENTER - DEPARTMENT LEGEND

	BUILDING CORE		FITNESS
	GENERAL BUILDING		LEASED / RENTABLE

### HEALTH & FITNESS CENTER - ROOM TYPE LEGEND

	ACTIVITY		LOCKER ROOMS		PHYSICAL THERAPY
	BUILDING OPERATIONS		MEETING ROOMS		STORAGE
	CLASSROOM		MULTIPURPOSE		TOILETS
	COMMON AREAS		OFFICE / CLERICAL		

RP-OPT2-10



2022 SPACE NEEDS ANALYSIS

## ROOM TYPE PLAN - FIRST FLOOR





DEPARTMENT SCHEDULES

DEPT SCHEDULE - RECREATION ADMINISTRATION - OPTION 2A					
ROOM NAME & TYPE	RECONFIGURED LOCATION	RECONFIGURED AREA	DESIRED AREA	EXISTING AREA	OCCUPANT NUMBER
MEETING ROOMS					
CONFERENCE	RECREATION ADMINISTRATION - UPPER LEVEL	630 SF	400 SF	630 SF	
MEETING ROOMS SUMMARY: 1 ROOM		630 SF	400 SF	630 SF	0
OFFICE / CLERICAL					
DIRECTOR	RECREATION ADMINISTRATION - UPPER LEVEL	261 SF	150 SF	261 SF	1
OFFICE	RECREATION ADMINISTRATION - UPPER LEVEL	127 SF	0 SF	127 SF	0
OFFICE	RECREATION ADMINISTRATION - UPPER LEVEL	158 SF	120 SF	158 SF	1
OFFICE	RECREATION ADMINISTRATION - UPPER LEVEL	162 SF	120 SF	162 SF	1
OFFICE	RECREATION ADMINISTRATION - UPPER LEVEL	164 SF	120 SF	164 SF	1
OFFICE	RECREATION ADMINISTRATION - UPPER LEVEL	167 SF	120 SF	167 SF	1
OFFICE	RECREATION ADMINISTRATION - UPPER LEVEL	169 SF	120 SF	169 SF	1
OFFICE	RECREATION ADMINISTRATION - UPPER LEVEL	169 SF	120 SF	169 SF	1
OFFICE	RECREATION ADMINISTRATION - UPPER LEVEL	171 SF	120 SF	171 SF	1
OPEN OFFICE	RECREATION ADMINISTRATION - UPPER LEVEL	267 SF	320 SF	203 SF	4
OPEN OFFICE	RECREATION ADMINISTRATION - UPPER LEVEL	483 SF	400 SF	464 SF	5
RECEPTION	RECREATION ADMINISTRATION - UPPER LEVEL	298 SF	80 SF	560 SF	1
OFFICE / CLERICAL SUMMARY: 12 ROOMS		2595 SF	1790 SF	2775 SF	18
STORAGE					
STORAGE	RECREATION ADMINISTRATION - LOWER LEVEL	375 SF	375 SF	327 SF	
STORAGE	RECREATION ADMINISTRATION - LOWER LEVEL	387 SF	110 SF	262 SF	
STORAGE	RECREATION ADMINISTRATION - LOWER LEVEL	453 SF	608 SF	507 SF	
STORAGE	RECREATION ADMINISTRATION - LOWER LEVEL	464 SF	650 SF	631 SF	
STORAGE	RECREATION ADMINISTRATION - LOWER LEVEL	581 SF	581 SF	507 SF	
CARE PACKAGE STORAGE	RECREATION ADMINISTRATION - UPPER LEVEL	205 SF	0 SF	0 SF	0
CLOSET	RECREATION ADMINISTRATION - UPPER LEVEL	8 SF	8 SF	8 SF	
CLOSET	RECREATION ADMINISTRATION - UPPER LEVEL	49 SF	49 SF	49 SF	
STORAGE	RECREATION ADMINISTRATION - UPPER LEVEL	60 SF	60 SF	60 SF	
STORAGE	RECREATION ADMINISTRATION - UPPER LEVEL	65 SF	65 SF	65 SF	
STORAGE	RECREATION ADMINISTRATION - LOWER LEVEL	39 SF	0 SF	0 SF	
STORAGE	RECREATION ADMINISTRATION - LOWER LEVEL	69 SF	0 SF	0 SF	
STORAGE	RECREATION ADMINISTRATION - LOWER LEVEL	654 SF	0 SF	0 SF	
STORAGE SUMMARY: 13 ROOMS		3409 SF	3194 SF	3104 SF	0
RECREATIONAL ADMINISTRATION SUMMARY:		6634 SF (NET)	5384 SF (NET)	6509 SF (NET)	18 STAFF

DEPT SCHEDULE - RECREATION ADMINISTRATION - OPTION 2B					
ROOM NAME & TYPE	RECONFIGURED LOCATION	RECONFIGURED AREA	DESIRED AREA	EXISTING AREA	OCCUPANT NUMBER
MEETING ROOMS					
CONFERENCE	RECREATION ADMINISTRATION - UPPER LEVEL	710 SF	400 SF	630 SF	
MEETING ROOMS SUMMARY: 1 ROOM		710 SF	400 SF	630 SF	0
OFFICE / CLERICAL					
DIRECTOR	RECREATION ADMINISTRATION - UPPER LEVEL	183 SF	150 SF	261 SF	1
OFFICE	RECREATION ADMINISTRATION - UPPER LEVEL	119 SF	0 SF	94 SF	
OFFICE	RECREATION ADMINISTRATION - UPPER LEVEL	121 SF	120 SF	119 SF	1
OFFICE	RECREATION ADMINISTRATION - UPPER LEVEL	124 SF	120 SF	127 SF	1
OFFICE	RECREATION ADMINISTRATION - UPPER LEVEL	124 SF	120 SF	158 SF	1
OFFICE	RECREATION ADMINISTRATION - UPPER LEVEL	127 SF	80 SF	164 SF	1
OFFICE	RECREATION ADMINISTRATION - UPPER LEVEL	127 SF	120 SF	167 SF	1
OFFICE	RECREATION ADMINISTRATION - UPPER LEVEL	128 SF	120 SF	169 SF	1
OFFICE	RECREATION ADMINISTRATION - UPPER LEVEL	133 SF	120 SF	169 SF	1
OFFICE	RECREATION ADMINISTRATION - UPPER LEVEL	145 SF	120 SF	171 SF	1
OPEN OFFICE	RECREATION ADMINISTRATION - UPPER LEVEL	441 SF	560 SF	667 SF	7
RECEPTION	RECREATION ADMINISTRATION - UPPER LEVEL	206 SF	160 SF	560 SF	2
OFFICE / CLERICAL SUMMARY: 12 ROOMS		1977 SF	1790 SF	2826 SF	18
STORAGE					
STORAGE	RECREATION ADMINISTRATION - LOWER LEVEL	375 SF	375 SF	327 SF	
STORAGE	RECREATION ADMINISTRATION - LOWER LEVEL	387 SF	110 SF	262 SF	
STORAGE	RECREATION ADMINISTRATION - LOWER LEVEL	453 SF	608 SF	507 SF	
STORAGE	RECREATION ADMINISTRATION - LOWER LEVEL	557 SF	650 SF	631 SF	
STORAGE	RECREATION ADMINISTRATION - LOWER LEVEL	581 SF	581 SF	507 SF	
STORAGE	RECREATION ADMINISTRATION - LOWER LEVEL	654 SF	688 SF	688 SF	
CARE PACKAGING STORAGE	RECREATION ADMINISTRATION - UPPER LEVEL	300 SF	0 SF	0 SF	
STORAGE	RECREATION ADMINISTRATION - UPPER LEVEL	79 SF	8 SF	8 SF	
STORAGE	RECREATION ADMINISTRATION - UPPER LEVEL	117 SF	49 SF	49 SF	
STORAGE	RECREATION ADMINISTRATION - UPPER LEVEL	164 SF	60 SF	60 SF	
STORAGE	RECREATION ADMINISTRATION - UPPER LEVEL	169 SF	65 SF	65 SF	
STORAGE SUMMARY: 11 ROOMS		3835 SF	3194 SF	3104 SF	0
RECREATIONAL ADMINISTRATION SUMMARY:		6523 SF (NET)	5384 SF (NET)	6560 SF (NET)	18 STAFF

# RECREATION & PARKS: OPTION 2

DEPARTMENT SCHEDULE - PARKS - OPTION 2A					
ROOM NAME & TYPE	RECONFIGURED LOCATION	RECONFIGURED AREA	DESIRED AREA	EXISTING AREA	OCCUPANT NUMBER
<b>FIELD OPERATIONS</b>					
FIELD OPERATIONS STORAGE	RECREATION ADMINISTRATION	996 SF	0 SF	0 SF	
FIELD OPERATIONS STORAGE	RECREATION ADMINISTRATION	3163 SF	0 SF	1200 SF	
FIELD OPERATIONS STORAGE	RECREATION ADMINISTRATION - LOWER LEVEL	266 SF	3000 SF	2090 SF	
FIELD OPERATIONS VEHICLES	RECREATION ADMINISTRATION	16897 SF	12000 SF		
<b>FIELD OPERATIONS SUMMARY: 4 AREAS</b>		<b>21322 SF</b>	<b>15000 SF</b>	<b>3290 SF</b>	<b>0</b>
<b>MAINTENANCE VEHICLES</b>					
PARKS MAINTENANCE VEHICLES	RECREATION ADMINISTRATION	911 SF	2260 SF		
PARKS MAINTENANCE VEHICLES	RECREATION ADMINISTRATION - LOWER LEVEL	407 SF	1130 SF		
<b>MAINTENANCE VEHICLES SUMMARY: 2 ROOMS</b>		<b>1319 SF</b>	<b>3390 SF</b>		<b>0</b>
<b>OFFICE / CLERICAL</b>					
ADMIN STORAGE	RECREATION ADMINISTRATION - UPPER LEVEL	38 SF	10 SF	10 SF	
MAINTENANCE HOTELING	RECREATION ADMINISTRATION - LOWER LEVEL	186 SF	60 SF	0 SF	6
OFFICE	RECREATION ADMINISTRATION - UPPER LEVEL	233 SF	120 SF	189 SF	1
PARKS ADMIN	RECREATION ADMINISTRATION - UPPER LEVEL	173 SF	80 SF	130 SF	1
<b>OFFICE / CLERICAL SUMMARY: 4 ROOMS</b>		<b>630 SF</b>	<b>270 SF</b>	<b>329 SF</b>	<b>8</b>

PARKS SUMMARY: 23271 SF (NET) 18660 SF (NET) 3619 SF (NET) 8 STAFF

DEPARTMENT SCHEDULE - PARKS - OPTION 2B					
ROOM NAME & TYPE	RECONFIGURED LOCATION	RECONFIGURED AREA	DESIRED AREA	EXISTING AREA	OCCUPANT NUMBER
<b>FIELD OPERATIONS</b>					
FIELD OPERATIONS VEHICLES	PRE-ENGINEERED BLDG	11674 SF	12000 SF	0 SF	
FIELD OPERATIONS STORAGE	PRE-ENGINEERED BLDG	658 SF	0 SF	0 SF	
FIELD OPERATIONS STORAGE	PRE-ENGINEERED BLDG	658 SF	0 SF	0 SF	
FIELD OPERATIONS STORAGE	PRE-ENGINEERED BLDG	1155 SF	0 SF	0 SF	
FIELD OPERATIONS STORAGE	PRE-ENGINEERED BLDG	1155 SF	3000 SF	3290 SF	
<b>FIELD OPERATIONS SUMMARY: 4 ROOMS</b>		<b>15300 SF</b>	<b>15000 SF</b>	<b>3290 SF</b>	<b>0</b>
<b>MAINTENANCE VEHICLES</b>					
PARKS MAINTENANCE VEHICLES	RECREATION ADMINISTRATION - LOWER	674 SF	0 SF	0 SF	
PARKS MAINTENANCE VEHICLES	RECREATION ADMINISTRATION - LOWER	1342 SF	3400 SF	0 SF	
<b>MAINTENANCE VEHICLES SUMMARY: 2 ROOMS</b>		<b>2016 SF</b>	<b>3400 SF</b>	<b>0 SF</b>	<b>0</b>
<b>OFFICE / CLERICAL</b>					
MAINTENANCE HOTELING	RECREATION ADMINISTRATION - LOWER	186 SF	60 SF	0 SF	6
OFFICE	RECREATION ADMINISTRATION - UPPER	124 SF	120 SF	189 SF	1
PARKS ADMIN	RECREATION ADMINISTRATION - UPPER	94 SF	80 SF	130 SF	1
CLOSET	RECREATION ADMINISTRATION - UPPER	49 SF	10 SF	10 SF	
<b>OFFICE / CLERICAL SUMMARY: 4 ROOMS</b>		<b>453 SF</b>	<b>270 SF</b>	<b>329 SF</b>	<b>8</b>

PARKS SUMMARY: 17769 SF (NET) 18670 SF (NET) 3619 SF (NET) 8 STAFF

DEPARTMENT SCHEDULE - CULTURAL ARTS - OPTION 2					
ROOM NAME & TYPE	RECONFIGURED LOCATION	RECONFIGURED AREA	DESIRED AREA	EXISTING AREA	OCCUPANT NUMBER
<b>ACTIVITY</b>					
ARTS & CRAFTS	FRANKLIN LOEBE CENTER	715 SF	1000 SF	1052 SF	
DANCE STUDIO	FRANKLIN LOEBE CENTER	1268 SF	1500 SF	954 SF	
DANCE STUDIO	FRANKLIN LOEBE CENTER	2186 SF	2350 SF	1036 SF	
<b>ACTIVITY SUMMARY: 3 ROOMS</b>		<b>4168 SF</b>	<b>4850 SF</b>	<b>3042 SF</b>	<b>0</b>
<b>COMMON AREAS</b>					
GREEN ROOM	FRANKLIN LOEBE CENTER	197 SF	0 SF	306 SF	
KITCHEN	FRANKLIN LOEBE CENTER	79 SF	200 SF	215 SF	
PARENT WAITING / SENIOR LIVING ROOM	FRANKLIN LOEBE CENTER	986 SF	1200 SF	1997 SF	
<b>COMMON AREAS SUMMARY: 3 SPACES</b>		<b>1262 SF</b>	<b>1400 SF</b>	<b>2518 SF</b>	<b>0</b>
<b>MULTIPURPOSE</b>					
MULTIPURPOSE	FRANKLIN LOEBE CENTER	954 SF	1000 SF	805 SF	
MULTIPURPOSE W/ DIVIDER	FRANKLIN LOEBE CENTER	1148 SF	2000 SF	1984 SF	
MULTIPURPOSE: GYM / THEATRE / RECITALS	FRANKLIN LOEBE CENTER	7148 SF	6500 SF	3087 SF	
REHERSAL / MULTIPURPOSE	FRANKLIN LOEBE CENTER	986 SF	1000 SF	1180 SF	
<b>MULTIPURPOSE SUMMARY: 4 SPACES</b>		<b>10237 SF</b>	<b>10500 SF</b>	<b>7056 SF</b>	<b>0</b>
<b>MUSIC</b>					
INSTRUMENT STORAGE	FRANKLIN LOEBE CENTER	64 SF	200 SF	136 SF	
PIANO ROOM	FRANKLIN LOEBE CENTER	142 SF	200 SF	194 SF	
PRACTICE	FRANKLIN LOEBE CENTER	88 SF	100 SF	0 SF	
PRACTICE	FRANKLIN LOEBE CENTER	88 SF	100 SF	0 SF	
<b>MUSIC SUMMARY: 4 ROOMS</b>		<b>383 SF</b>	<b>600 SF</b>	<b>330 SF</b>	<b>0</b>
<b>OFFICE / CLERICAL</b>					
OFFICE	FRANKLIN LOEBE CENTER	99 SF	120 SF	160 SF	1
RECEPTION	FRANKLIN LOEBE CENTER	96 SF	0 SF	86 SF	
RECEPTION / TICKETS	FRANKLIN LOEBE CENTER	191 SF	0 SF	0 SF	
<b>OFFICE / CLERICAL SUMMARY: 3 ROOMS</b>		<b>385 SF</b>	<b>120 SF</b>	<b>246 SF</b>	<b>1</b>
<b>STORAGE</b>					
COSTUME STORAGE	FRANKLIN LOEBE CENTER	83 SF	0 SF	0 SF	
COSTUME STORAGE	FRANKLIN LOEBE CENTER	299 SF	600 SF	458 SF	
DIVIDER STORAGE	FRANKLIN LOEBE CENTER	25 SF	0 SF	0 SF	
PAGENT STORAGE	FRANKLIN LOEBE CENTER	98 SF	0 SF	0 SF	
PAGENT STORAGE	FRANKLIN LOEBE CENTER	451 SF	600 SF	569 SF	
STOR.	FRANKLIN LOEBE CENTER	15 SF	0 SF	0 SF	
STOR.	FRANKLIN LOEBE CENTER	15 SF	0 SF	0 SF	
STOR.	FRANKLIN LOEBE CENTER	15 SF	0 SF	15 SF	
STOR.	FRANKLIN LOEBE CENTER	20 SF	0 SF	0 SF	
STORAGE	FRANKLIN LOEBE CENTER	115 SF	0 SF	0 SF	
STORAGE	FRANKLIN LOEBE CENTER	115 SF	0 SF	0 SF	
STORAGE	FRANKLIN LOEBE CENTER	157 SF	0 SF	0 SF	
STORAGE	FRANKLIN LOEBE CENTER	245 SF	1500 SF	1386 SF	
TABLE STOR.	FRANKLIN LOEBE CENTER	72 SF	0 SF	0 SF	
TABLE STORAGE	FRANKLIN LOEBE CENTER	256 SF	0 SF	0 SF	
TABLE STORAGE	FRANKLIN LOEBE CENTER	301 SF	600 SF	607 SF	
THEATRE STORAGE	FRANKLIN LOEBE CENTER	1278 SF	650 SF	611 SF	
THEATRE STORAGE	WELL HOUSE 5	1225 SF	1225 SF	1225 SF	
<b>STORAGE SUMMARY: 18 ROOMS</b>		<b>4786 SF</b>	<b>5175 SF</b>	<b>4871 SF</b>	<b>0</b>

CULTURAL ARTS SUMMARY: 21221 SF (NET) 22645 SF (NET) 18063 SF (NET) 1 STAFF

# **OPT3**

**CONSOLIDATED  
SPACES**

① Village Hall  
14700 Ravinia Avenue

⑩ Park Administration & Garage  
14671 West Avenue

⑪ Orland Park Health & Fitness Center  
15430 West Avenue  
Recreation & Parks to relocate here  
Cultural Arts to relocate here

⑫ SportsPlex  
11301 159th Street

⑬ Police Department  
15100 Ravinia Avenue

⑭ Veterans Center  
15045 West Avenue

② Civic Center  
14700 Ravinia Avenue

③ Franklin Loebe Center  
14690 Ravinia Avenue  
Preschool to remain.  
Wrestling to remain w/ additional storage  
Day Camp to relocate here

④ Recreational Administration  
14600 Ravinia Avenue  
Recreation Administration Department to relocate to 11.  
Recreation & Parks Storage  
Flex Office Space

⑤ Centennial Concessions/Offices  
15000 West Avenue

⑥ Centennial Park Aquatic Center  
15000 West Avenue

⑦ Centennial Park Ice Rink  
15000 West Avenue

⑧ Cultural Arts Center  
14700 Park Lane

⑨ Orland Park History Museum  
14415 Beacon Avenue

⑮ Public Works Department  
15055 Ravinia Avenue

⑯ Bulk Storage Facility  
10401 159th Avenue

⑰ Thistlewood Pump Station  
8500 Thistlewood Lane

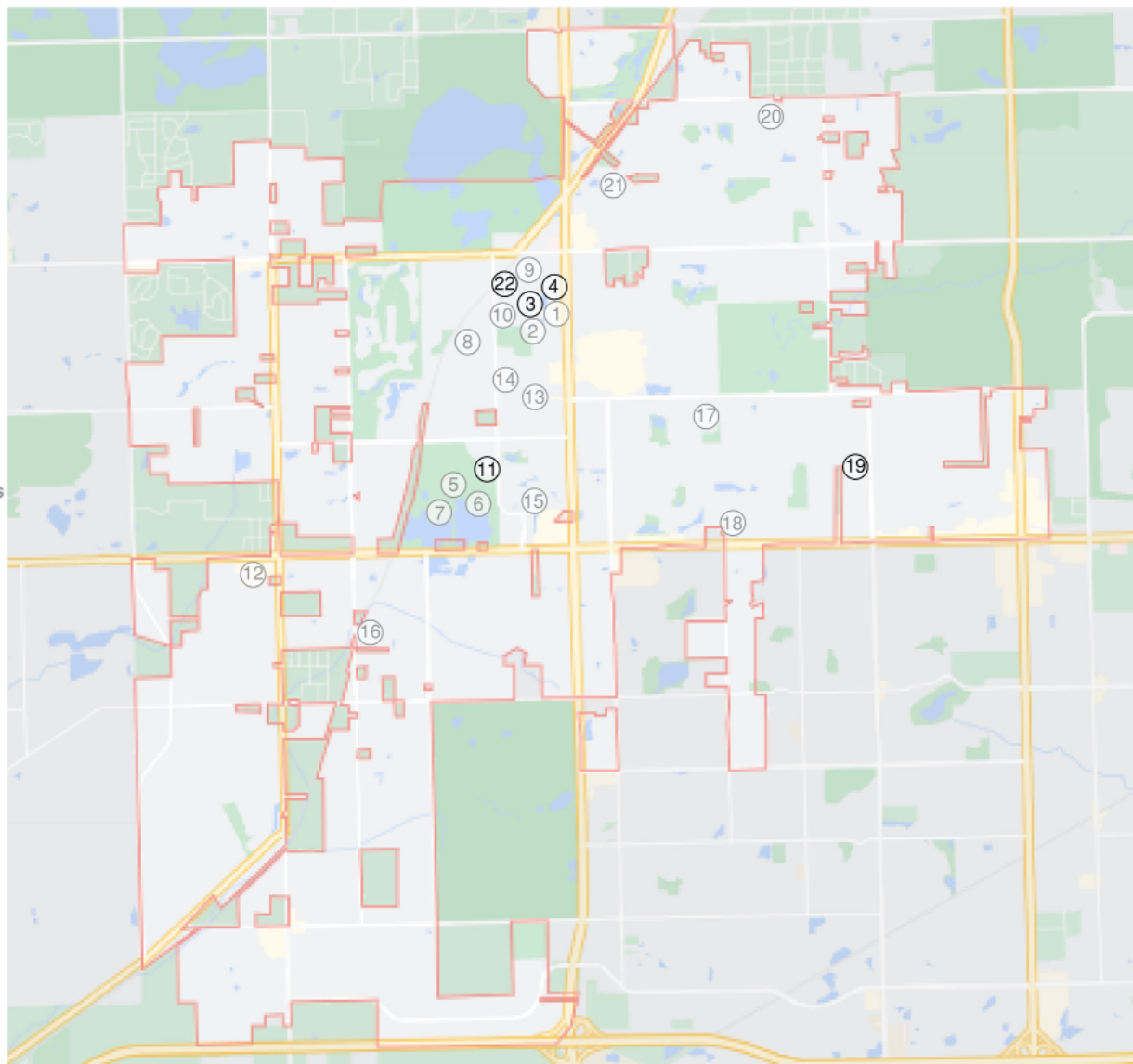
⑱ Well House #10  
8799 159th Street

⑲ Well House #5  
7300 Wheeler Drive  
Theater Storage Option 3B

⑳ Well House #7  
13600 Cherry Lane

㉑ Well House #9  
8200 140th Street

㉒ John Humphrey House  
5830 W. 144th Place  
History Museum Storage and Display



## ORLAND PARK MASTER PLAN - RECREATION & PARKS: OPTION 3

### SPACE & PROGRAMMING NEEDS ASSESSMENT

#### VILLAGE OF ORLAND PARK

LEGATARCHITECTS  
DESIGN | PERFORMANCE | SUSTAINABILITY

LEGEND  
# BUILDING NUMBER LABEL

# RECREATION ADMINISTRATION

DEPARTMENT PLAN - LOWER LEVEL



REC ADMIN - BUILDING SCHEDULE - OPTION 3			
DEPARTMENT & ROOM TYPE	RECONFIGURED AREA	DESIRED AREA	EXISTING AREA
<b>FLEX</b>			
COMMON AREAS	16 SF	0 SF	0 SF
OFFICE / CLERICAL	1667 SF	0 SF	0 SF
STORAGE	188 SF	0 SF	0 SF
FLEX SUMMARY:	1871 SF	0 SF	0 SF
<b>GENERAL BUILDING</b>			
COMMON AREAS	171 SF	200 SF	171 SF
MEETING ROOMS	378 SF	0 SF	630 SF
MULTIPURPOSE	1059 SF	0 SF	1059 SF
STORAGE	10 SF	10 SF	10 SF
GENERAL BUILDING SUMMARY:	2529 SF	210 SF	1870 SF
<b>RP-PARKS ADMIN</b>			
FILE STORAGE	2006 SF	2143 SF	2143 SF
RP-PARKS ADMIN SUMMARY:	2006 SF	2143 SF	2143 SF
<b>RP-RECREATION ADMIN</b>			
STORAGE	3731 SF	3194 SF	3104 SF
RP-RECREATION ADMIN SUMMARY:	3731 SF	3194 SF	3104 SF

RP-OPT3-2



ROOM TYPE PLAN - LOWER LEVEL



RECREATION ADMINISTRATION - DEPARTMENT LEGEND



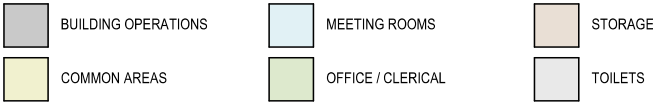
RECREATION ADMINISTRATION - ROOM TYPE LEGEND



ROOM TYPE PLAN - UPPER LEVEL



RECREATION ADMINISTRATION - ROOM TYPE LEGEND



DEPARTMENT PLAN - UPPER LEVEL



RECREATION ADMINISTRATION - DEPARTMENT LEGEND



**RECONFIGURED FLOOR PLAN SUMMARY**

Option 3 considers relocating Recreation and Parks administration. This makes most of the current Rec Admin building available for storage and flex office space. Renovation of the lower level to remove the cell blocks and provide large flexible storage space is still desired for easily accessible and maximum storage space for Recreation.

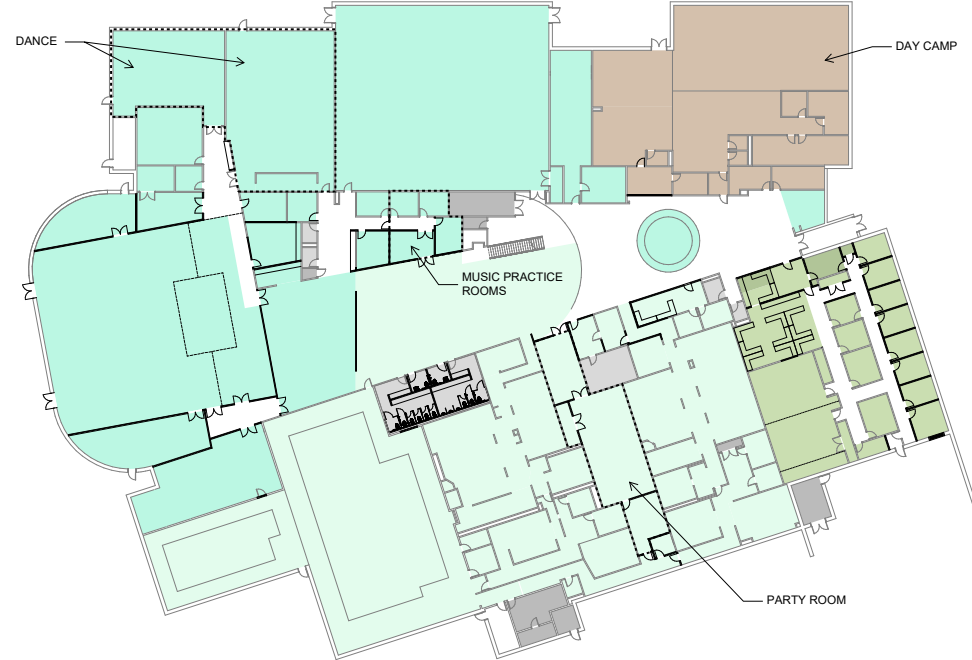


# HEALTH & FITNESS CENTER

## HFC - BUILDING SCHEDULE - OPTION 3A

DEPARTMENT & ROOM TYPE	RECONFIGURED AREA	DESIRED AREA	EXISTING AREA
<b>LEASED / RENTABLE - DAY CAMP</b>			
ACTIVITY	5395 SF	0 SF	0 SF
OFFICE / CLERICAL	351 SF	0 SF	0 SF
STORAGE	656 SF	0 SF	265 SF
<b>LEASED / RENTABLE - DAY CAMP SUMMARY:</b>	<b>6401 SF</b>	<b>0 SF</b>	<b>265 SF</b>
<b>CULTURAL ARTS</b>			
ACTIVITY	4762 SF	4850 SF	3042 SF
COMMON AREAS	2424 SF	1400 SF	2518 SF
MULTIPURPOSE	12429 SF	10500 SF	7056 SF
MUSIC	566 SF	600 SF	330 SF
OFFICE / CLERICAL	628 SF	120 SF	246 SF
STORAGE	4969 SF	5175 SF	4871 SF
<b>CULTURAL ARTS SUMMARY:</b>	<b>25778 SF</b>	<b>22645 SF</b>	<b>18063 SF</b>
<b>FITNESS</b>			
ACTIVITY	15673 SF	12199 SF	42653 SF
COMMON AREAS	507 SF	0 SF	230 SF
LOCKER ROOMS	8992 SF	8731 SF	9676 SF
MULTIPURPOSE	981 SF	1000 SF	0 SF
OFFICE / CLERICAL	469 SF	0 SF	2909 SF
STORAGE	534 SF	0 SF	692 SF
<b>FITNESS SUMMARY:</b>	<b>27156 SF</b>	<b>21930 SF</b>	<b>56160 SF</b>
<b>PARKS ADMINISTRATION</b>			
OFFICE / CLERICAL	226 SF	200 SF	319 SF
STORAGE	20 SF	10 SF	10 SF
<b>PARKS ADMINISTRATION SUMMARY:</b>	<b>246 SF</b>	<b>210 SF</b>	<b>329 SF</b>
<b>RECREATION ADMINISTRATION</b>			
COMMON AREAS	300 SF	200 SF	171 SF
MEETING ROOMS	350 SF	400 SF	630 SF
MULTIPURPOSE	1139 SF	1100 SF	1059 SF
OFFICE / CLERICAL	2071 SF	1790 SF	3256 SF
STORAGE	155 SF	100 SF	182 SF
<b>RECREATION ADMINISTRATION SUMMARY:</b>	<b>4014 SF</b>	<b>3590 SF</b>	<b>5298 SF</b>

## DEPARTMENT PLAN - FIRST FLOOR



## RECONFIGURED FLOOR PLAN SUMMARY

In Option 3, Recreation and Parks is relocated to the Health & Fitness Center along with Cultural Arts. This consolidates most of the Recreation and Parks department outside of Recreation storage and field operations. In Option 3A the day camp program could be relocated here. Large multipurpose spaces would be available to cultural arts as well as large dance studios, music practice rooms, arts and crafts room, parent waiting / senior living room, and theatre space, green room and storage / scene shop. The pools would remain and a party room could be rented out for pool parties. The pools could remain open to the public or ancillary to SportsPlex.

### HEALTH & FITNESS CENTER - DEPARTMENT LEGEND

	BUILDING CORE		LEASED / RENTABLE
	GENERAL BUILDING		PARKS
	CULTURAL ARTS		RECREATION
	FITNESS		

### HEALTH & FITNESS CENTER - ROOM TYPE LEGEND

	ACTIVITY		MEETING ROOMS		OFFICE / CLERICAL
	BUILDING OPERATIONS		MULTIPURPOSE		STORAGE
	COMMON AREAS		MUSIC		TOILETS
	LOCKER ROOMS				

RP-OPT3-4



## 2022 SPACE NEEDS ANALYSIS

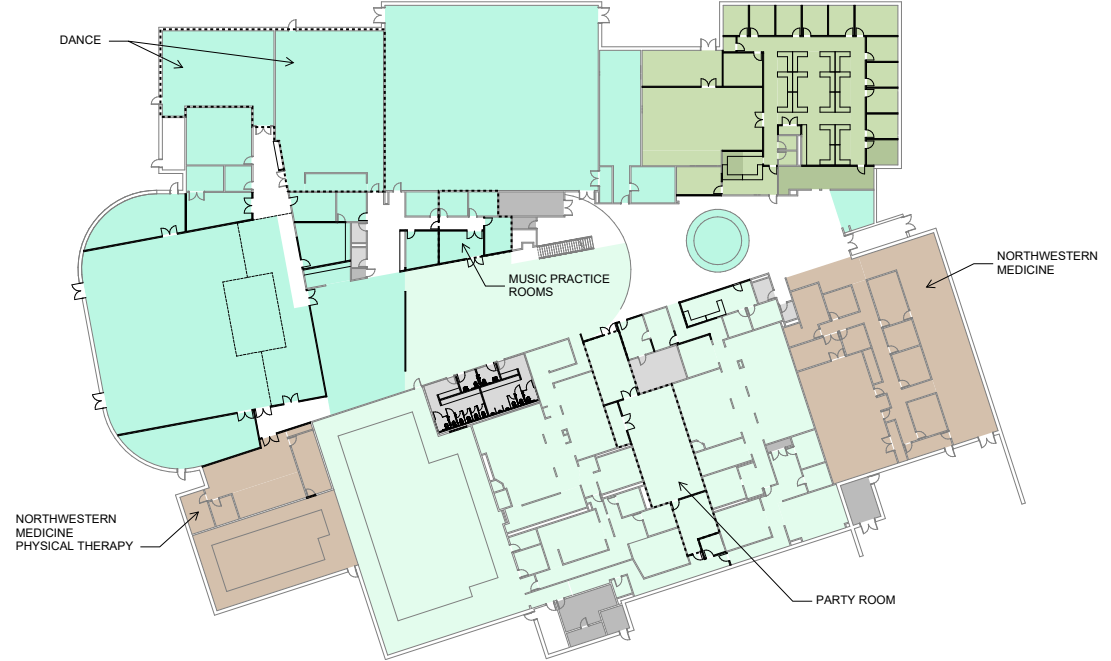


# HEALTH & FITNESS CENTER

## HFC - BUILDING SCHEDULE - OPTION 3B

DEPARTMENT & ROOM TYPE	RECONFIGURED AREA	DESIRED AREA	EXISTING AREA
<b>LEASED / RENTABLE - NORTHWESTERN MEDICINE</b>			
ACTIVITY	1859 SF	0 SF	1859 SF
CLASSROOM	1276 SF	0 SF	1276 SF
COMMON AREAS	2420 SF	0 SF	2420 SF
MEETING ROOMS	350 SF	0 SF	350 SF
OFFICE / CLERICAL	939 SF	0 SF	938 SF
PHYSICAL THERAPY	1305 SF	0 SF	1305 SF
STORAGE	308 SF	0 SF	308 SF
<b>NORTHWESTERN MEDICINE SUMMARY:</b>	<b>8456 SF</b>	<b>0 SF</b>	<b>8456 SF</b>
<b>CULTURAL ARTS</b>			
ACTIVITY	4762 SF	4850 SF	3042 SF
COMMON AREAS	2424 SF	1400 SF	2518 SF
MULTIPURPOSE	12429 SF	10500 SF	7056 SF
MUSIC	566 SF	600 SF	330 SF
OFFICE / CLERICAL	628 SF	120 SF	246 SF
STORAGE	3588 SF	5175 SF	4871 SF
<b>CULTURAL ARTS SUMMARY:</b>	<b>24397 SF</b>	<b>22645 SF</b>	<b>18063 SF</b>
<b>FITNESS</b>			
ACTIVITY	13814 SF	10340 SF	42653 SF
COMMON AREAS	507 SF	0 SF	230 SF
LOCKER ROOMS	8992 SF	8731 SF	9676 SF
MULTIPURPOSE	981 SF	1000 SF	0 SF
OFFICE / CLERICAL	469 SF	0 SF	2909 SF
STORAGE	534 SF	0 SF	692 SF
<b>FITNESS SUMMARY:</b>	<b>25297 SF</b>	<b>20071 SF</b>	<b>56160 SF</b>
<b>PARKS ADMIN</b>			
OFFICE / CLERICAL	216 SF	200 SF	319 SF
STORAGE	355 SF	10 SF	10 SF
<b>PARKS ADMIN SUMMARY:</b>	<b>570 SF</b>	<b>210 SF</b>	<b>329 SF</b>
<b>RECREATION ADMIN</b>			
COMMON AREAS	360 SF	200 SF	171 SF
MEETING ROOMS	413 SF	400 SF	630 SF
MULTIPURPOSE	1198 SF	1100 SF	1059 SF
OFFICE / CLERICAL	2529 SF	1790 SF	3256 SF
STORAGE	516 SF	100 SF	182 SF
<b>RECREATION ADMIN SUMMARY:</b>	<b>5015 SF</b>	<b>3590 SF</b>	<b>5298 SF</b>

## DEPARTMENT PLAN - FIRST FLOOR



## RECONFIGURED FLOOR PLAN SUMMARY

Option 3B remains the same as Option 3A except the Recreation and Parks department is located at the under-utilized childcare and office area of HFC. This allows Northwestern Medicine to remain along with physical therapy. The cultural arts functions remain the same only with a little less storage space.

### HEALTH & FITNESS CENTER - DEPARTMENT LEGEND

	BUILDING CORE		LEASED / RENTABLE
	GENERAL BUILDING		PARKS
	CULTURAL ARTS		RECREATION
	FITNESS		

### HEALTH & FITNESS CENTER - ROOM TYPE LEGEND

	ACTIVITY		LOCKER ROOMS		OFFICE / CLERICAL
	BUILDING OPERATIONS		MEETING ROOMS		PHYSICAL THERAPY
	CLASSROOM		MULTIPURPOSE		STORAGE
	COMMON AREAS		MUSIC		TOILETS

RP-OPT3-6



## 2022 SPACE NEEDS ANALYSIS

## ROOM TYPE PLAN - FIRST FLOOR



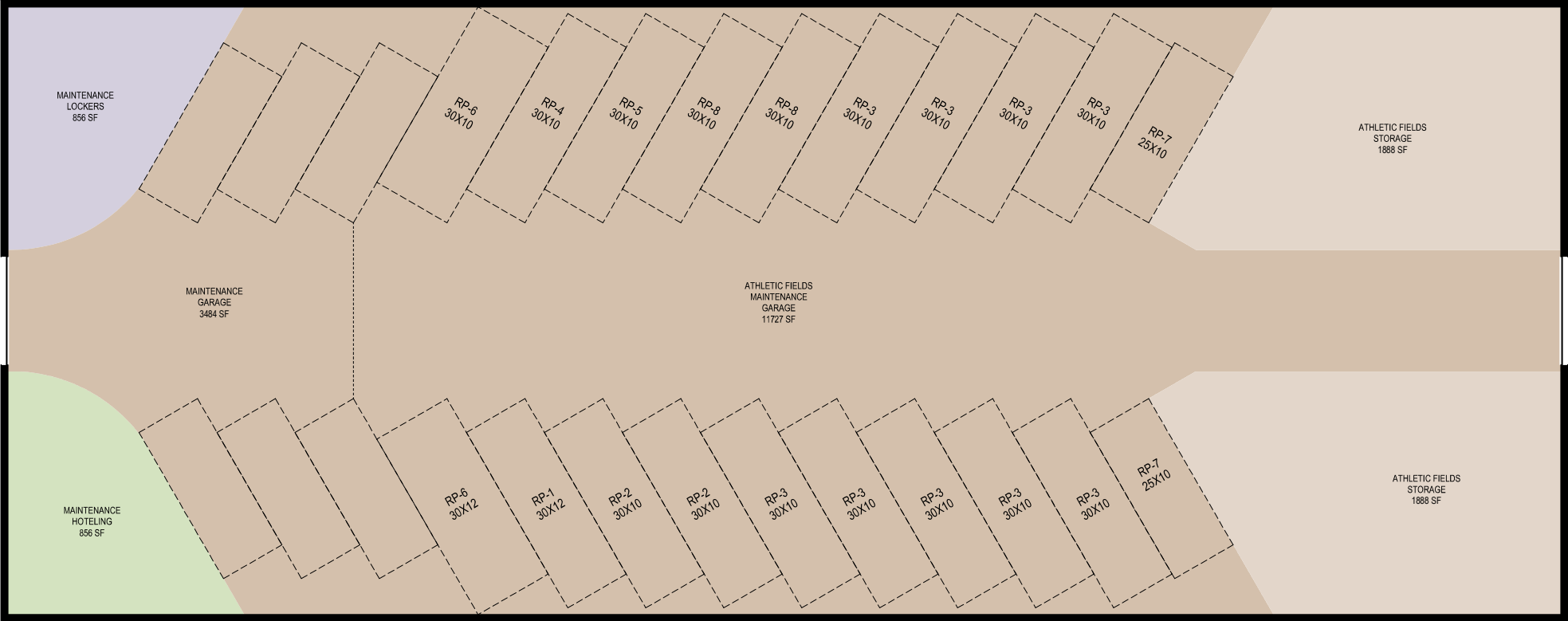
RP-OPT3-7

**LEGAT**ARCHITECTS

DESIGN | PERFORMANCE | SUSTAINABILITY

# SUPPLEMENTARY BUILDINGS / SITES

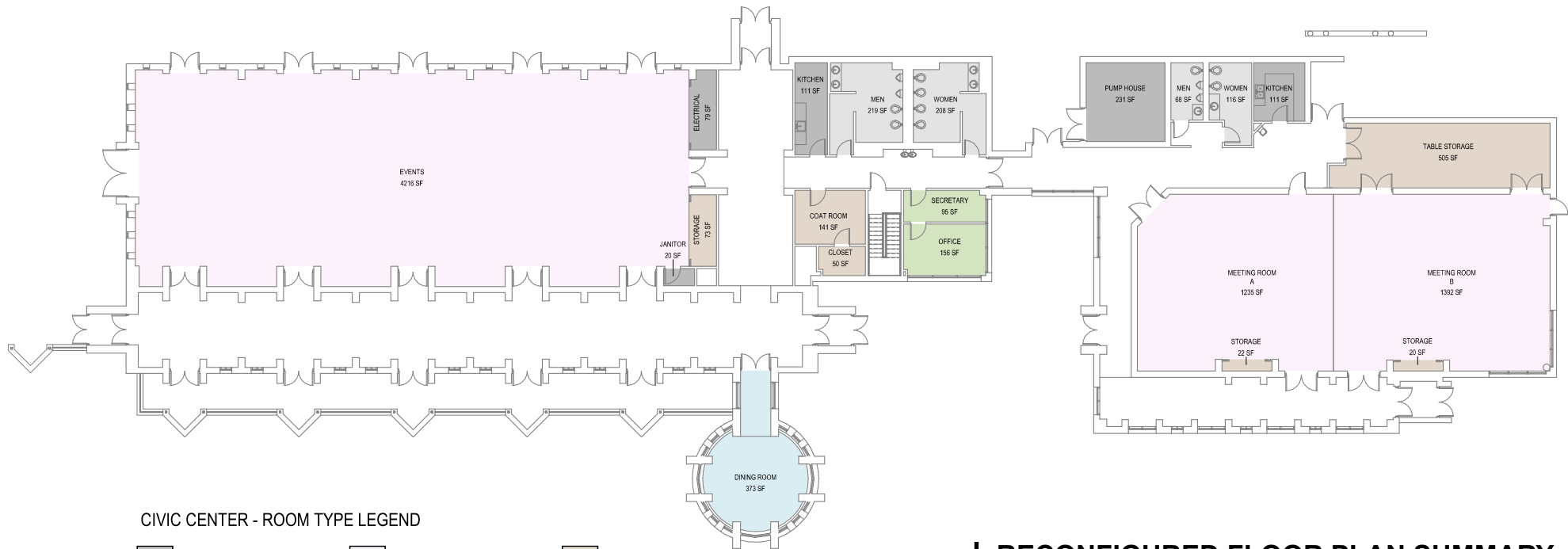
## PRE-ENGINEERED BUILDING DIAGRAM



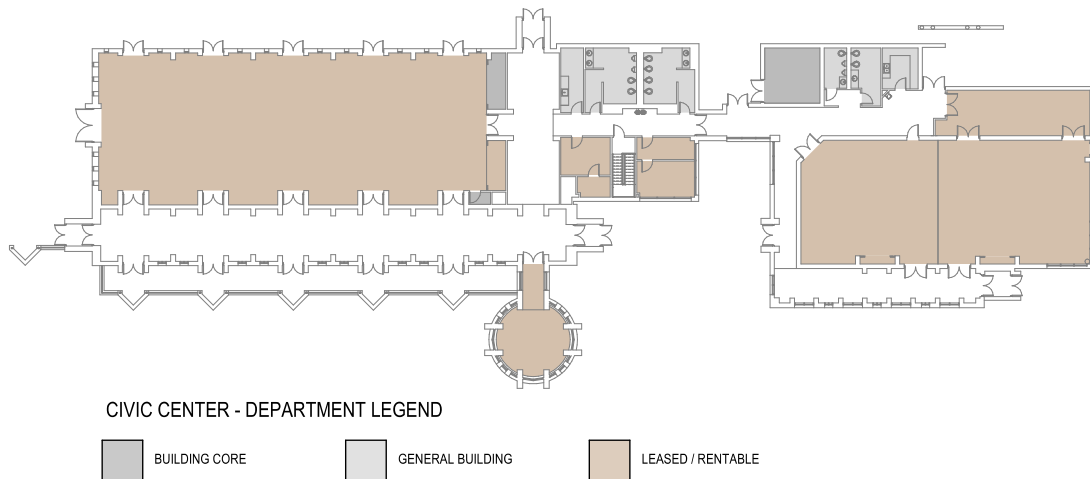
RP-OPT3-8



## ROOM TYPE PLAN - FIRST FLOOR



## DEPARTMENT PLAN - FIRST FLOOR



## RECONFIGURED FLOOR PLAN SUMMARY

In Option 3, the Parks field operations vehicles / equipment and material storage would be relocated to a large pre-engineered building either near the Health & Fitness Center, at Centennial Park, or the current Parks Administration building site. Included in this version is a small locker area with a toilet facility and hoteling office space. Maintenance vehicles could also be stored.

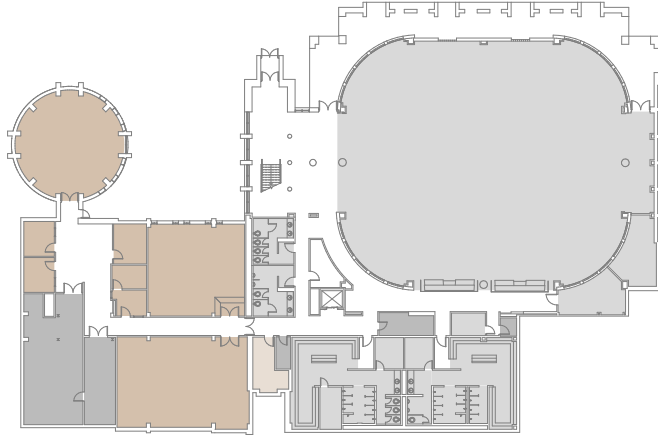
With Cultural Arts located in the Health & Fitness Center, the Civic Center would retain its current functions. It could still be used as over flow space for cultural arts as the HFC spaces, while large and could be divided, have fewer rooms.

RP-OPT3-9



# FRANKLIN LOEBE CENTER

## DEPARTMENT PLAN - LOWER LEVEL



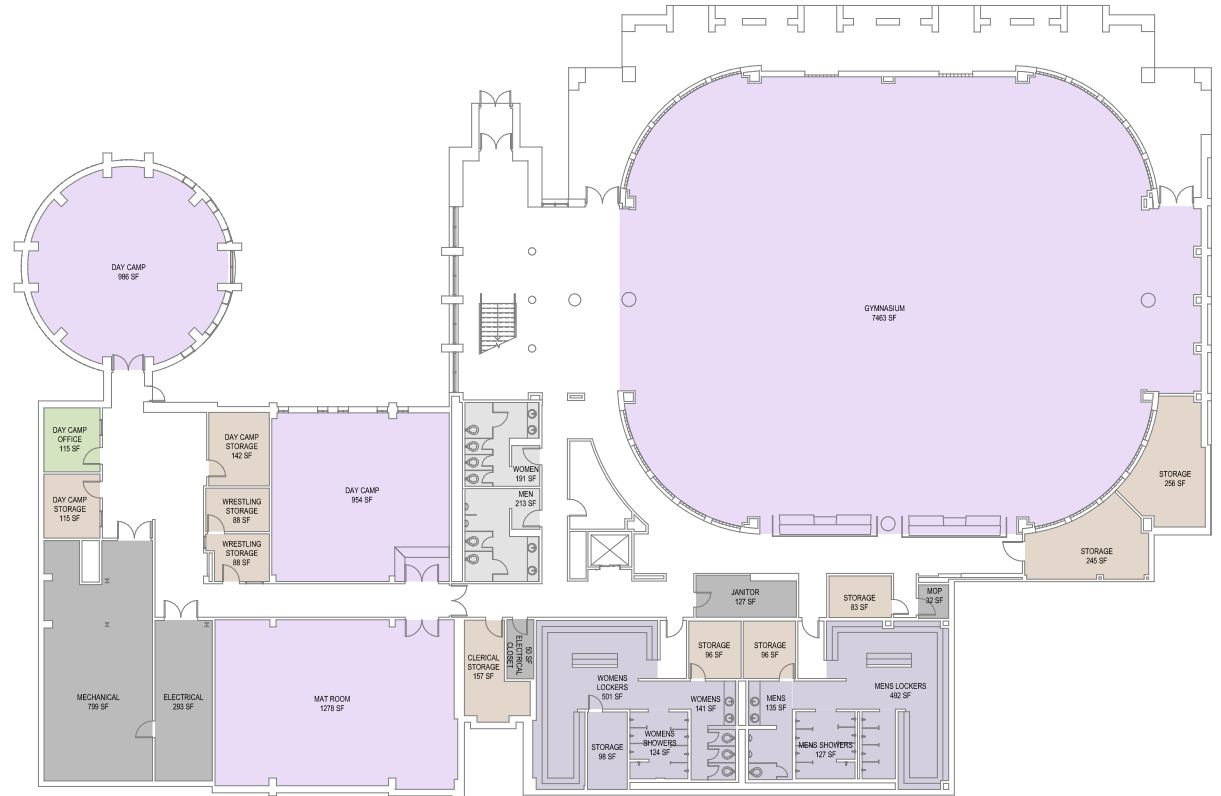
FRANKLIN LOEBE CENTER - LOWER LEVEL - DEPARTMENT LEGEND

	BUILDING CORE		LEASED / PRESCHOOL
	GENERAL BUILDING		LEASED / RENTABLE







### FLC - BUILDING SCHEDULE - OPTION 2

DEPARTMENT & ROOM TYPE	RECONFIGURED AREA	DESIRED AREA	EXISTING AREA
<b>GENERAL BUILDING</b>			
ACTIVITY	3572 SF	0 SF	3572 SF
LOCKER ROOMS	498 SF	0 SF	1813 SF
<b>GENERAL BUILDING SUMMARY:</b>	<b>4070 SF</b>	<b>0 SF</b>	<b>5385 SF</b>
<b>CULTURAL ARTS</b>			
ACTIVITY	4168 SF	4850 SF	3042 SF
COMMON AREAS	1262 SF	1400 SF	2518 SF
MULTIPURPOSE	10237 SF	10500 SF	7056 SF
MUSIC	383 SF	600 SF	330 SF
OFFICE / CLERICAL	385 SF	120 SF	246 SF
STORAGE	3561 SF	5175 SF	4871 SF
<b>CULTURAL ARTS SUMMARY:</b>	<b>19996 SF</b>	<b>22645 SF</b>	<b>18063 SF</b>

## ROOM TYPE PLAN - LOWER LEVEL



FRANKLIN LOEBE CENTER - LOWER LEVEL - ROOM TYPE LEGEND

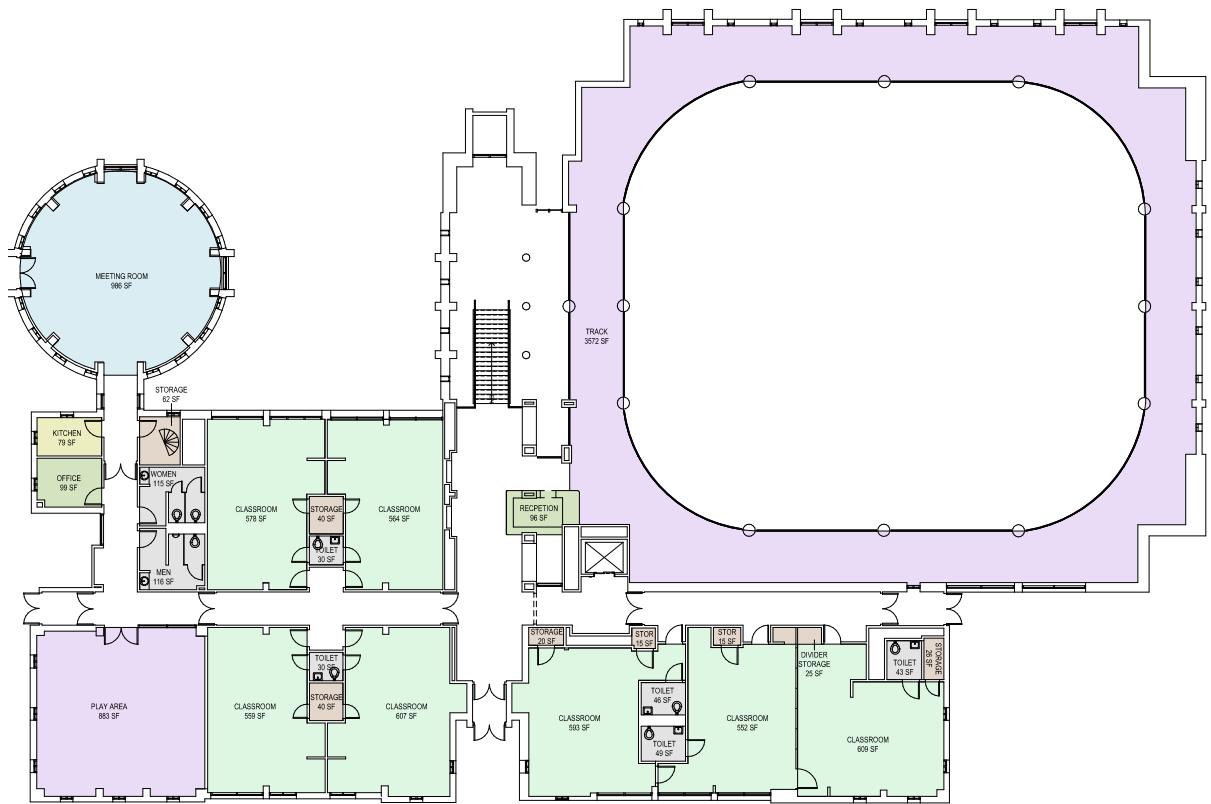
	ACTIVITY		OFFICE / CLERICAL		STORAGE
	BUILDING OPERATIONS		LOCKER ROOMS		TOILETS

RP-OPT3-10

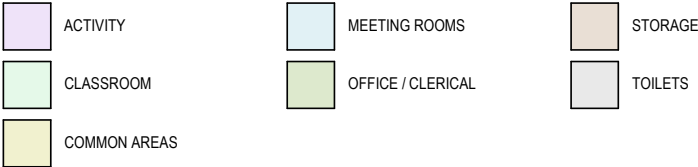


2022 SPACE NEEDS ANALYSIS

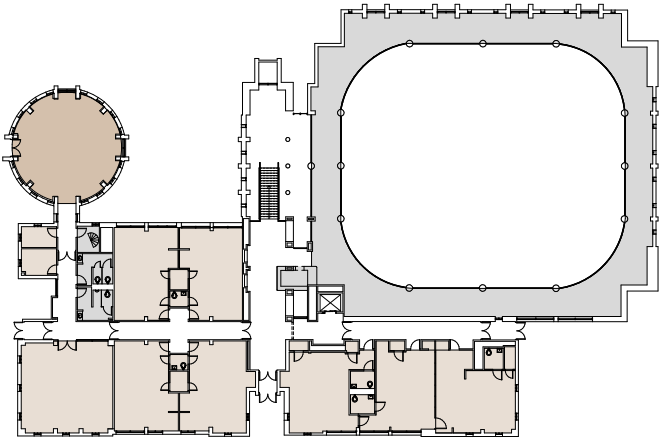
ROOM TYPE PLAN - UPPER LEVEL



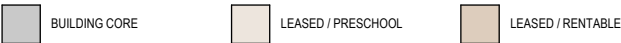
FRANKLIN LOEBE CENTER - UPPER LEVEL - ROOM TYPE LEGEND



DEPARTMENT PLAN - UPPER LEVEL



FRANKLIN LOEBE CENTER - UPPER LEVEL - DEPARTMENT LEGEND



**RECONFIGURED FLOOR PLAN SUMMARY**

With Cultural Arts relocating to the Health & Fitness Center, the Franklin Loebe Center can remain as a preschool. The wrestling program would also remain and the day camp would be relocated to the old dance studio and be able to have access to the gym. The FLC would only require Phase 1 maintenance and repairs.

DEPARTMENT SCHEDULES

DEPT SCHEDULE - RECREATION ADMINISTRATION - OPTION 3A					
ROOM NAME & TYPE	RECONFIGURED LOCATION	RECONFIGURED AREA	DESIRED AREA	EXISTING AREA	OCCUPANT NUMBER
COMMON AREAS					
KITCHEN	HEALTH & FITNESS CENTER	138 SF	200 SF	171 SF	
MULTIPURPOSE	HEALTH & FITNESS CENTER	1139 SF	1000 SF	1059 SF	
WAITING	HEALTH & FITNESS CENTER	162 SF	0 SF	0 SF	
COMMON AREAS SUMMARY: 3 SPACES		1438 SF	1200 SF	1230 SF	0
MEETING ROOMS					
CONFERENCE	HEALTH & FITNESS CENTER	167 SF	0 SF	0 SF	
CONFERENCE	HEALTH & FITNESS CENTER	183 SF	400 SF	630 SF	
MEETING ROOMS SUMMARY: 2 ROOMS		350 SF	400 SF	630 SF	0
OFFICE / CLERICAL					
DIRECTOR	HEALTH & FITNESS CENTER	168 SF	150 SF	261 SF	1
OFFICE	HEALTH & FITNESS CENTER	122 SF	0 SF	94 SF	0
OFFICE	HEALTH & FITNESS CENTER	124 SF	120 SF	119 SF	1
OFFICE	HEALTH & FITNESS CENTER	124 SF	120 SF	127 SF	1
OFFICE	HEALTH & FITNESS CENTER	124 SF	120 SF	158 SF	1
OFFICE	HEALTH & FITNESS CENTER	124 SF	120 SF	164 SF	1
OFFICE	HEALTH & FITNESS CENTER	124 SF	120 SF	167 SF	1
OFFICE	HEALTH & FITNESS CENTER	124 SF	120 SF	169 SF	1
OFFICE	HEALTH & FITNESS CENTER	124 SF	120 SF	169 SF	1
OFFICE	HEALTH & FITNESS CENTER	127 SF	0 SF	171 SF	0
OPEN OFFICE	HEALTH & FITNESS CENTER	702 SF	720 SF	667 SF	9
RECEPTION	HEALTH & FITNESS CENTER	82 SF	80 SF	560 SF	1
OFFICE / CLERICAL SUMMARY: 12 ROOMS		2071 SF	1790 SF	2826 SF	18
STORAGE					
CLOSET	HEALTH & FITNESS CENTER	43 SF	8 SF	8 SF	
STORAGE	HEALTH & FITNESS CENTER	51 SF	60 SF	60 SF	
STORAGE	HEALTH & FITNESS CENTER	61 SF	65 SF	65 SF	
STORAGE	RECREATION ADMINISTRATION - LOWER LEVEL	39 SF	0 SF	0 SF	
STORAGE	RECREATION ADMINISTRATION - LOWER LEVEL	69 SF	49 SF	49 SF	
STORAGE	RECREATION ADMINISTRATION - LOWER LEVEL	375 SF	375 SF	327 SF	
STORAGE	RECREATION ADMINISTRATION - LOWER LEVEL	387 SF	110 SF	262 SF	
STORAGE	RECREATION ADMINISTRATION - LOWER LEVEL	453 SF	608 SF	507 SF	
STORAGE	RECREATION ADMINISTRATION - LOWER LEVEL	464 SF	650 SF	631 SF	
STORAGE	RECREATION ADMINISTRATION - LOWER LEVEL	581 SF	581 SF	507 SF	
STORAGE	RECREATION ADMINISTRATION - LOWER LEVEL	855 SF	688 SF	688 SF	
CARE PACKAGE STORAGE	RECREATION ADMINISTRATION - UPPER LEVEL	305 SF	0 SF	0 SF	0
CARE PACKAGING	RECREATION ADMINISTRATION - UPPER LEVEL	205 SF	0 SF	0 SF	0
CLOSET	RECREATION ADMINISTRATION - UPPER LEVEL	49 SF	0 SF	0 SF	
CLOSET	RECREATION ADMINISTRATION - UPPER LEVEL	8 SF	0 SF	0 SF	
STORAGE	RECREATION ADMINISTRATION - UPPER LEVEL	193 SF	0 SF	0 SF	
STORAGE	RECREATION ADMINISTRATION - UPPER LEVEL	248 SF	0 SF	0 SF	
STORAGE	RECREATION ADMINISTRATION - UPPER LEVEL	560 SF	0 SF	0 SF	
STORAGE	RECREATION ADMINISTRATION - UPPER LEVEL	94 SF	0 SF	0 SF	
STORAGE	RECREATION ADMINISTRATION - UPPER LEVEL	65 SF	0 SF	0 SF	
STORAGE	RECREATION ADMINISTRATION - UPPER LEVEL	60 SF	0 SF	0 SF	
STORAGE	RECREATION ADMINISTRATION - UPPER LEVEL	158 SF	0 SF	0 SF	
STORAGE	RECREATION ADMINISTRATION - UPPER LEVEL	164 SF	0 SF	0 SF	
STORAGE	RECREATION ADMINISTRATION - UPPER LEVEL	169 SF	0 SF	0 SF	
STORAGE	RECREATION ADMINISTRATION - UPPER LEVEL	238 SF	0 SF	0 SF	
STORAGE SUMMARY: 13 ROOMS		5891 SF	3194 SF	3104 SF	0

RECREATIONAL ADMINISTRATION SUMMARY: 9751 SF (NET) 6584 SF (NET) 7790 SF (NET) 18 STAFF

RP-OPT3-12



DEPARTMENT SCHEDULE - PARKS - OPTION 3A					
ROOM NAME & TYPE	RECONFIGURED LOCATION	RECONFIGURED AREA	DESIRED AREA	EXISTING AREA	OCCUPANT NUMBER
FIELD OPS / MNT					
FIELD OPERATIONS VEHICLES	PRE-ENGINEERED BLDG	11727 SF	12000 SF	0 SF	
PARKS MAINTENANCE VEHICLES	PRE-ENGINEERED BLDG	3484 SF	3400 SF	0 SF	
MAINTENANCE LOCKERS	PRE-ENGINEERED BLDG	856 SF	0 SF	0 SF	
MAINTENANCE HOTELING	PRE-ENGINEERED BLDG	856 SF	60 SF	0 SF	6
FIELD OPERATIONS STORAGE	PRE-ENGINEERED BLDG	1888 SF	0 SF	0 SF	
FIELD OPERATIONS STORAGE	PRE-ENGINEERED BLDG	1888 SF	3000 SF	3290 SF	
FIELD OPS / MNT SUMMARY: 6 ROOMS		20700 SF	18460 SF	3290 SF	6
OFFICE / CLERICAL					
OFFICE	HEALTH & FITNESS CENTER	144 SF	120 SF	189 SF	1
RECEPTION	HEALTH & FITNESS CENTER	82 SF	80 SF	130 SF	1
CLOSET	HEALTH & FITNESS CENTER	20 SF	10 SF	10 SF	
OFFICE / CLERICAL SUMMARY: 3 ROOMS		246 SF	210 SF	329 SF	2

PARKS SUMMARY: 20946 SF (NET) 20813 SF (NET) 5762 SF (NET) 8 STAFF

DEPARTMENT SCHEDULE - CULTURAL ARTS - OPTION 3A					
ROOM NAME & TYPE	RECONFIGURED LOCATION	RECONFIGURED AREA	DESIRED AREA	EXISTING AREA	OCCUPANT NUMBER
<b>ACTIVITY</b>					
ARTS & CRAFTS / MEETING ROOM	HEALTH & FITNESS CENTER	845 SF	1000 SF	1052 SF	
DANCE / MARITAL ARTS	HEALTH & FITNESS CENTER	1428 SF	1500 SF	954 SF	
DANCE STUDIO	HEALTH & FITNESS CENTER	2490 SF	2350 SF	1036 SF	
<b>ACTIVITY SUMMARY: 3 ROOMS</b>		<b>4762 SF</b>	<b>4850 SF</b>	<b>3042 SF</b>	<b>0</b>
<b>COMMON AREAS</b>					
GREEN ROOM / MEETING	HEALTH & FITNESS CENTER	343 SF	0 SF	306 SF	
KITCHEN	HEALTH & FITNESS CENTER	136 SF	200 SF	215 SF	
LIBRARY	HEALTH & FITNESS CENTER	230 SF	0 SF	0 SF	
PARENT WAITING / LIVING ROOM	HEALTH & FITNESS CENTER	1715 SF	1200 SF	1997 SF	
<b>COMMON AREAS SUMMARY: 4 SPACES</b>		<b>2424 SF</b>	<b>1400 SF</b>	<b>2518 SF</b>	<b>0</b>
<b>MULTIPURPOSE</b>					
GYMNASIUM / MULTIPURPOSE	HEALTH & FITNESS CENTER	6249 SF	4000 SF	3969 SF	
THEATRE / MULTIPURPOSE	HEALTH & FITNESS CENTER	6179 SF	6500 SF	3087 SF	
<b>MULTIPURPOSE SUMMARY: 2 ROOMS</b>		<b>12429 SF</b>	<b>10500 SF</b>	<b>7056 SF</b>	<b>0</b>
<b>MUSIC</b>					
INSTRUMENT STORAGE	HEALTH & FITNESS CENTER	149 SF	200 SF	136 SF	
PIANO ROOM	HEALTH & FITNESS CENTER	198 SF	200 SF	194 SF	
PRACTICE ROOM	HEALTH & FITNESS CENTER	108 SF	100 SF	0 SF	
PRACTICE ROOM	HEALTH & FITNESS CENTER	111 SF	100 SF	0 SF	
<b>MUSIC SUMMARY: 4 ROOMS</b>		<b>566 SF</b>	<b>600 SF</b>	<b>330 SF</b>	<b>0</b>
<b>OFFICE / CLERICAL</b>					
OFFICE DANCE / THEATRE	HEALTH & FITNESS CENTER	137 SF	120 SF	246 SF	1
RECEPTION / TICKETS	HEALTH & FITNESS CENTER	491 SF	0 SF	0 SF	
<b>OFFICE / CLERICAL SUMMARY: 2 ROOMS</b>		<b>628 SF</b>	<b>120 SF</b>	<b>246 SF</b>	<b>1</b>
<b>STORAGE</b>					
COSTUME STORAGE	HEALTH & FITNESS CENTER	593 SF	600 SF	458 SF	
PAGENT STORAGE	HEALTH & FITNESS CENTER	107 SF	0 SF	0 SF	
PAGENT STORAGE	HEALTH & FITNESS CENTER	149 SF	0 SF	0 SF	
PAGENT STORAGE	HEALTH & FITNESS CENTER	340 SF	600 SF	569 SF	
SCENE SHOP & STORAGE	HEALTH & FITNESS CENTER	1381 SF	1225 SF	1225 SF	
STORAGE	HEALTH & FITNESS CENTER	70 SF	0 SF	15 SF	
STORAGE	HEALTH & FITNESS CENTER	123 SF	0 SF	0 SF	
STORAGE	HEALTH & FITNESS CENTER	172 SF	0 SF	0 SF	
STORAGE	HEALTH & FITNESS CENTER	182 SF	0 SF	0 SF	
STORAGE	HEALTH & FITNESS CENTER	204 SF	0 SF	0 SF	
STORAGE	HEALTH & FITNESS CENTER	251 SF	1500 SF	1386 SF	
TABLE STORAGE	HEALTH & FITNESS CENTER	810 SF	600 SF	607 SF	
THEATRE STORAGE	HEALTH & FITNESS CENTER	586 SF	650 SF	611 SF	
<b>STORAGE SUMMARY: 13 ROOMS</b>		<b>4969 SF</b>	<b>5175 SF</b>	<b>4871 SF</b>	<b>0</b>

CULTURAL ARTS SUMMARY: 25778 SF (NET) 22645 SF (NET) 18063 SF (NET) 1 STAFF

DEPARTMENT SCHEDULES

DEPT SCHEDULE - RECREATION ADMINISTRATION - OPTION 3B					
ROOM NAME & TYPE	RECONFIGURED LOCATION	RECONFIGURED AREA	DESIRED AREA	EXISTING AREA	OCCUPANT NUMBER
COMMON AREAS					
KITCHEN	HEALTH & FITNESS CENTER	197 SF	200 SF	171 SF	
MULTIPURPOSE	HEALTH & FITNESS CENTER	1198 SF	1000 SF	1059 SF	
WAITING	HEALTH & FITNESS CENTER	163 SF	0 SF	0 SF	
COMMON AREAS SUMMARY: 3 SPACES		1558 SF	1200 SF	1230 SF	0
MEETING ROOMS					
CONFERENCE	HEALTH & FITNESS CENTER	206 SF	400 SF	630 SF	
CONFERENCE	HEALTH & FITNESS CENTER	207 SF	0 SF	0 SF	
MEETING ROOMS SUMMARY: 2 ROOMS		413 SF	400 SF	630 SF	0
OFFICE / CLERICAL					
DIRECTOR	HEALTH & FITNESS CENTER	204 SF	150 SF	261 SF	1
OFFICE	HEALTH & FITNESS CENTER	120 SF	120 SF	119 SF	1
OFFICE	HEALTH & FITNESS CENTER	120 SF	120 SF	127 SF	1
OFFICE	HEALTH & FITNESS CENTER	120 SF	120 SF	158 SF	1
OFFICE	HEALTH & FITNESS CENTER	120 SF	0 SF	171 SF	0
OFFICE	HEALTH & FITNESS CENTER	120 SF	0 SF	94 SF	0
OFFICE	HEALTH & FITNESS CENTER	122 SF	120 SF	164 SF	1
OFFICE	HEALTH & FITNESS CENTER	122 SF	120 SF	167 SF	1
OFFICE	HEALTH & FITNESS CENTER	122 SF	120 SF	169 SF	1
OFFICE	HEALTH & FITNESS CENTER	122 SF	120 SF	169 SF	1
OPEN OFFICE	HEALTH & FITNESS CENTER	1147 SF	720 SF	667 SF	9
RECEPTION	HEALTH & FITNESS CENTER	91 SF	80 SF	560 SF	1
OFFICE / CLERICAL SUMMARY: 12 ROOMS		2529 SF	1790 SF	2826 SF	18
STORAGE					
CLOSET	HEALTH & FITNESS CENTER	32 SF	8 SF	8 SF	
STORAGE	HEALTH & FITNESS CENTER	31 SF	60 SF	60 SF	
STORAGE	HEALTH & FITNESS CENTER	454 SF	65 SF	65 SF	
STORAGE	RECREATION ADMINISTRATION - LOWER LEVEL	39 SF	0 SF	0 SF	
STORAGE	RECREATION ADMINISTRATION - LOWER LEVEL	69 SF	49 SF	49 SF	
STORAGE	RECREATION ADMINISTRATION - LOWER LEVEL	375 SF	375 SF	327 SF	
STORAGE	RECREATION ADMINISTRATION - LOWER LEVEL	387 SF	110 SF	262 SF	
STORAGE	RECREATION ADMINISTRATION - LOWER LEVEL	453 SF	608 SF	507 SF	
STORAGE	RECREATION ADMINISTRATION - LOWER LEVEL	464 SF	650 SF	631 SF	
STORAGE	RECREATION ADMINISTRATION - LOWER LEVEL	581 SF	581 SF	507 SF	
STORAGE	RECREATION ADMINISTRATION - LOWER LEVEL	855 SF	688 SF	688 SF	
CARE PACKAGE STORAGE	RECREATION ADMINISTRATION - UPPER LEVEL	305 SF	0 SF	0 SF	0
CARE PACKAGING	RECREATION ADMINISTRATION - UPPER LEVEL	205 SF	0 SF	0 SF	0
CLOSET	RECREATION ADMINISTRATION - UPPER LEVEL	49 SF	0 SF	0 SF	
CLOSET	RECREATION ADMINISTRATION - UPPER LEVEL	8 SF	0 SF	0 SF	
STORAGE	RECREATION ADMINISTRATION - UPPER LEVEL	193 SF	0 SF	0 SF	
STORAGE	RECREATION ADMINISTRATION - UPPER LEVEL	248 SF	0 SF	0 SF	
STORAGE	RECREATION ADMINISTRATION - UPPER LEVEL	560 SF	0 SF	0 SF	
STORAGE	RECREATION ADMINISTRATION - UPPER LEVEL	94 SF	0 SF	0 SF	
STORAGE	RECREATION ADMINISTRATION - UPPER LEVEL	65 SF	0 SF	0 SF	
STORAGE	RECREATION ADMINISTRATION - UPPER LEVEL	60 SF	0 SF	0 SF	
STORAGE	RECREATION ADMINISTRATION - UPPER LEVEL	158 SF	0 SF	0 SF	
STORAGE	RECREATION ADMINISTRATION - UPPER LEVEL	164 SF	0 SF	0 SF	
STORAGE	RECREATION ADMINISTRATION - UPPER LEVEL	169 SF	0 SF	0 SF	
STORAGE	RECREATION ADMINISTRATION - UPPER LEVEL	238 SF	0 SF	0 SF	
STORAGE SUMMARY: 13 ROOMS		6253 SF	3194 SF	3104 SF	0

RECREATIONAL ADMINISTRATION SUMMARY: 10752 SF (NET) 6584 SF (NET) 7790 SF (NET) 18 STAFF

RP-OPT3-14



DEPARTMENT SCHEDULE - PARKS - OPTION 3B					
ROOM NAME & TYPE	RECONFIGURED LOCATION	RECONFIGURED AREA	DESIRED AREA	EXISTING AREA	OCCUPANT NUMBER
FIELD OPS / MNT					
FIELD OPERATIONS VEHICLES	PRE-ENGINEERED BLDG	11727 SF	12000 SF	0 SF	
PARKS MAINTENANCE VEHICLES	PRE-ENGINEERED BLDG	3484 SF	3400 SF	0 SF	
MAINTENANCE LOCKERS	PRE-ENGINEERED BLDG	856 SF	0 SF	0 SF	
MAINTENANCE HOTELING	PRE-ENGINEERED BLDG	856 SF	60 SF	0 SF	6
FIELD OPERATIONS STORAGE	PRE-ENGINEERED BLDG	1888 SF	0 SF	0 SF	
FIELD OPERATIONS STORAGE	PRE-ENGINEERED BLDG	1888 SF	3000 SF	3290 SF	
FIELD OPS / MNT SUMMARY: 6 ROOMS		20700 SF	18460 SF	3290 SF	6
OFFICE / CLERICAL					
OFFICE	HEALTH & FITNESS CENTER	125 SF	120 SF	189 SF	1
RECEPTION	HEALTH & FITNESS CENTER	91 SF	80 SF	130 SF	1
STORAGE	HEALTH & FITNESS CENTER	355 SF	10 SF	10 SF	
OFFICE / CLERICAL SUMMARY: 3 ROOMS		570 SF	210 SF	329 SF	2

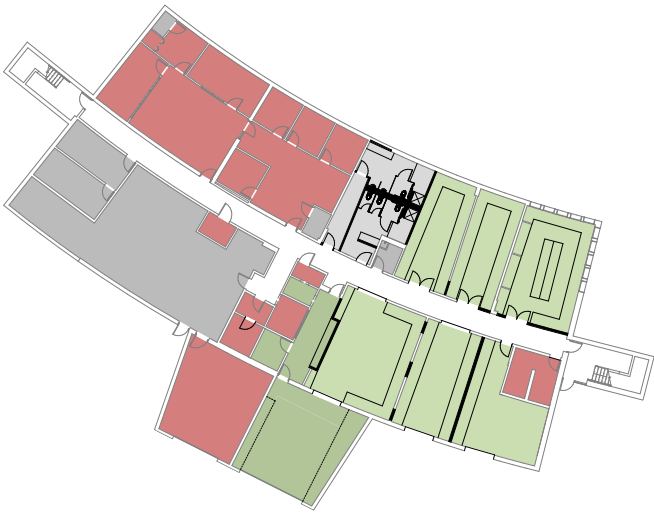
PARKS SUMMARY: 21271 SF (NET) 18660 SF (NET) 3629 SF (NET) 8 STAFF

DEPARTMENT SCHEDULE - CULTURAL ARTS - OPTION 3B					
ROOM NAME & TYPE	RECONFIGURED LOCATION	RECONFIGURED AREA	DESIRED AREA	EXISTING AREA	OCCUPANT NUMBER
<b>ACTIVITY</b>					
ARTS & CRAFTS / MEETING ROOM	HEALTH & FITNESS CENTER	845 SF	1000 SF	1052 SF	
DANCE / MARITAL ARTS	HEALTH & FITNESS CENTER	1428 SF	1500 SF	954 SF	
DANCE STUDIO	HEALTH & FITNESS CENTER	2490 SF	2350 SF	1036 SF	
<b>ACTIVITY SUMMARY: 3 ROOMS</b>		<b>4762 SF</b>	<b>4850 SF</b>	<b>3042 SF</b>	<b>0</b>
<b>COMMON AREAS</b>					
GREEN ROOM / MEETING	HEALTH & FITNESS CENTER	343 SF	0 SF	306 SF	
KITCHEN	HEALTH & FITNESS CENTER	136 SF	200 SF	215 SF	
LIBRARY	HEALTH & FITNESS CENTER	230 SF	0 SF	0 SF	
PARENT WAITING / LIVING ROOM	HEALTH & FITNESS CENTER	1715 SF	1200 SF	1997 SF	
<b>COMMON AREAS SUMMARY: 4 SPACES</b>		<b>2424 SF</b>	<b>1400 SF</b>	<b>2518 SF</b>	<b>0</b>
<b>MULTIPURPOSE</b>					
GYMNASIUM / MULTIPURPOSE	HEALTH & FITNESS CENTER	6249 SF	4000 SF	3969 SF	
THEATRE / MULTIPURPOSE	HEALTH & FITNESS CENTER	6179 SF	6500 SF	3087 SF	
<b>MULTIPURPOSE SUMMARY: 2 ROOMS</b>		<b>12429 SF</b>	<b>10500 SF</b>	<b>7056 SF</b>	<b>0</b>
<b>MUSIC</b>					
INSTRUMENT STORAGE	HEALTH & FITNESS CENTER	149 SF	200 SF	136 SF	
PIANO ROOM	HEALTH & FITNESS CENTER	198 SF	200 SF	194 SF	
PRACTICE ROOM	HEALTH & FITNESS CENTER	108 SF	100 SF	0 SF	
PRACTICE ROOM	HEALTH & FITNESS CENTER	111 SF	100 SF	0 SF	
<b>MUSIC SUMMARY: 4 ROOMS</b>		<b>566 SF</b>	<b>600 SF</b>	<b>330 SF</b>	<b>0</b>
<b>OFFICE / CLERICAL</b>					
OFFICE DANCE / THEATRE	HEALTH & FITNESS CENTER	137 SF	120 SF	246 SF	1
RECEPTION / TICKETS	HEALTH & FITNESS CENTER	491 SF	0 SF	0 SF	
<b>OFFICE / CLERICAL SUMMARY: 2 ROOMS</b>		<b>628 SF</b>	<b>120 SF</b>	<b>246 SF</b>	<b>1</b>
<b>STORAGE</b>					
COSTUME STORAGE	HEALTH & FITNESS CENTER	593 SF	600 SF	458 SF	
PAGENT STORAGE	HEALTH & FITNESS CENTER	107 SF	0 SF	0 SF	
PAGENT STORAGE	HEALTH & FITNESS CENTER	149 SF	0 SF	0 SF	
PAGENT STORAGE	HEALTH & FITNESS CENTER	340 SF	600 SF	569 SF	
STORAGE	HEALTH & FITNESS CENTER	70 SF	0 SF	15 SF	
STORAGE	HEALTH & FITNESS CENTER	123 SF	0 SF	0 SF	
STORAGE	HEALTH & FITNESS CENTER	172 SF	0 SF	0 SF	
STORAGE	HEALTH & FITNESS CENTER	182 SF	0 SF	0 SF	
STORAGE	HEALTH & FITNESS CENTER	204 SF	0 SF	0 SF	
STORAGE	HEALTH & FITNESS CENTER	251 SF	1500 SF	1386 SF	
TABLE STORAGE	HEALTH & FITNESS CENTER	810 SF	600 SF	607 SF	
THEATRE STORAGE	HEALTH & FITNESS CENTER	586 SF	650 SF	611 SF	
THEATRE STORAGE	WELL HOUSE 5	1225 SF	1225 SF	1225 SF	
<b>STORAGE SUMMARY: 13 ROOMS</b>		<b>4813 SF</b>	<b>5175 SF</b>	<b>4871 SF</b>	<b>0</b>

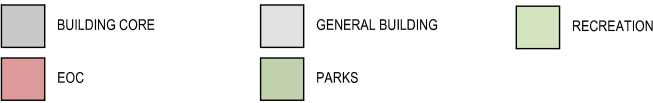
CULTURAL ARTS SUMMARY: 25622 SF (NET) 22645 SF (NET) 18063 SF (NET) 1 STAFF



DEPARTMENT PLAN - LOWER LEVEL



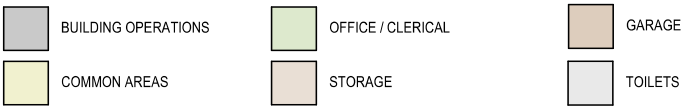
RECREATION ADMINISTRATION - DEPARTMENT LEGEND



ROOM TYPE PLAN - LOWER LEVEL



RECREATION ADMINISTRATION - ROOM TYPE LEGEND

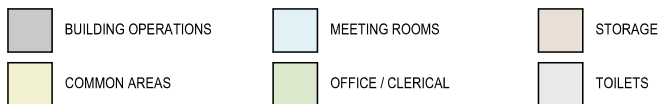


# OPTION 1 - UPPER LEVEL

## ROOM TYPE PLAN - UPPER LEVEL



### RECREATION ADMINISTRATION - ROOM TYPE LEGEND

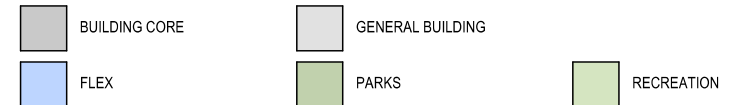


# CONSENSUS OPTION

## DEPARTMENT PLAN - UPPER LEVEL



### RECREATION ADMINISTRATION - DEPARTMENT LEGEND



## CONSENSUS OPTION PLAN SUMMARY

The Consensus Option consists of the Lower Level of Option 2A and the Upper Level of Option 1.

Option 1 involves only Phase 1 maintenance and repairs with little to no added renovation. On the upper level, furniture configuration and reassigning current spaces accommodates the office needs.

Option 2A the cell blocks and locker rooms are removed and the lower level is renovated to provide large flexible storage rooms for Recreation. A hoteling area for Parks maintenance is located just off the garage entry.

RP-OPT3-17

**LEGAT**ARCHITECTS

DESIGN | PERFORMANCE | SUSTAINABILITY