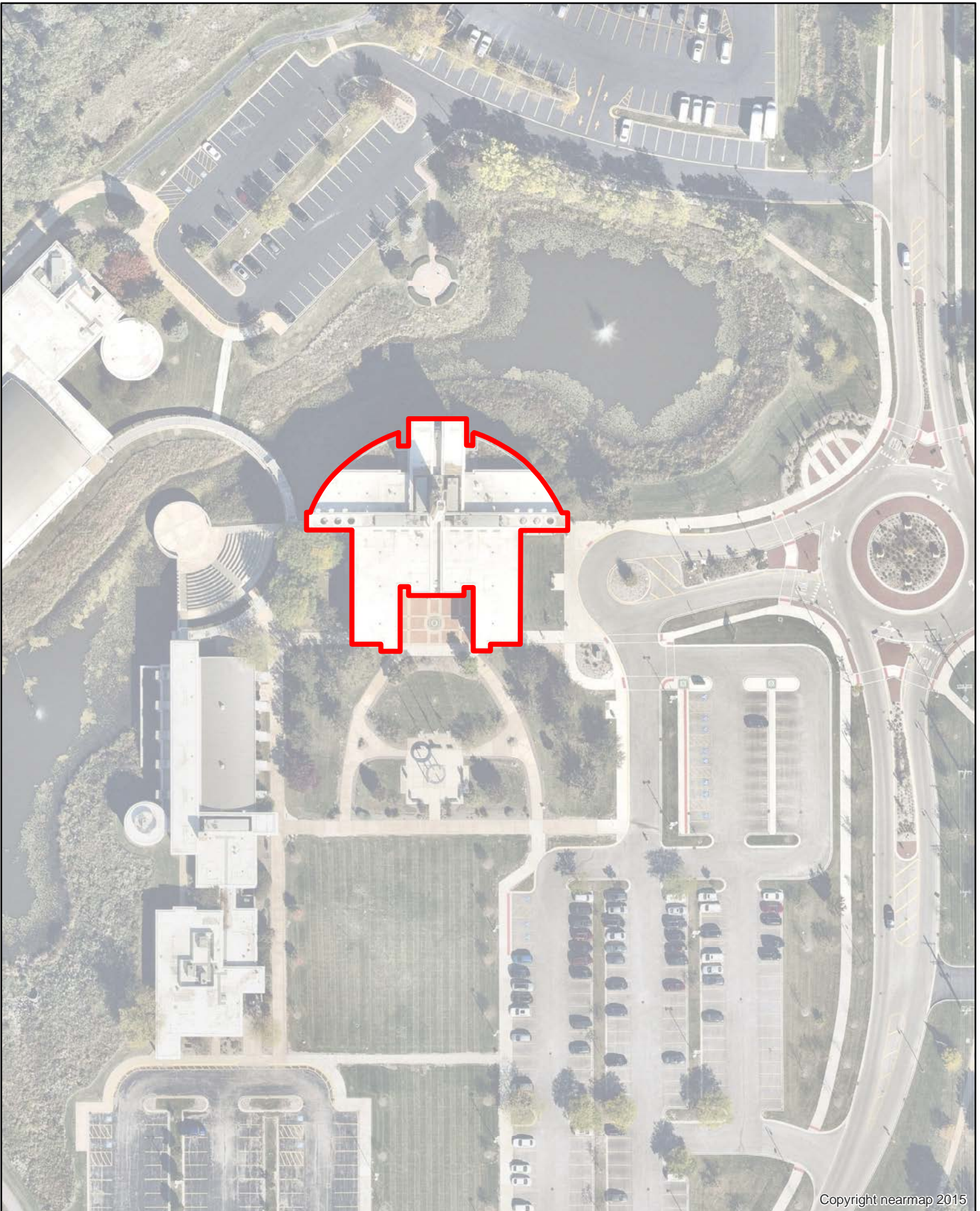


Exhibit A - LIST OF FACILITIES (Maps Attached Below)

1. Village Hall
2. Civic Center
3. Franklin Loebe Center (FLC)
4. Recreational Administration
5. SportsPlex
6. Police Department
7. Cultural Arts Center
8. Public Works Facility and Police Firing Range
9. Thistlewood Pump House
10. Wellhouse #5
11. Wellhouse #7
12. Wellhouse #9
13. Wellhouse #10
14. Bulk Storage Facility
15. Centennial Park Aquatic Center (CPAC)
16. Centennial Park Concessions and Offices
17. Centennial Park Ice Rink
18. Parks Administration and Maintenance Garage
19. Orland Park History Museum
20. Veteran's Center
21. Orland Park Health and Fitness Center (OPHFC)

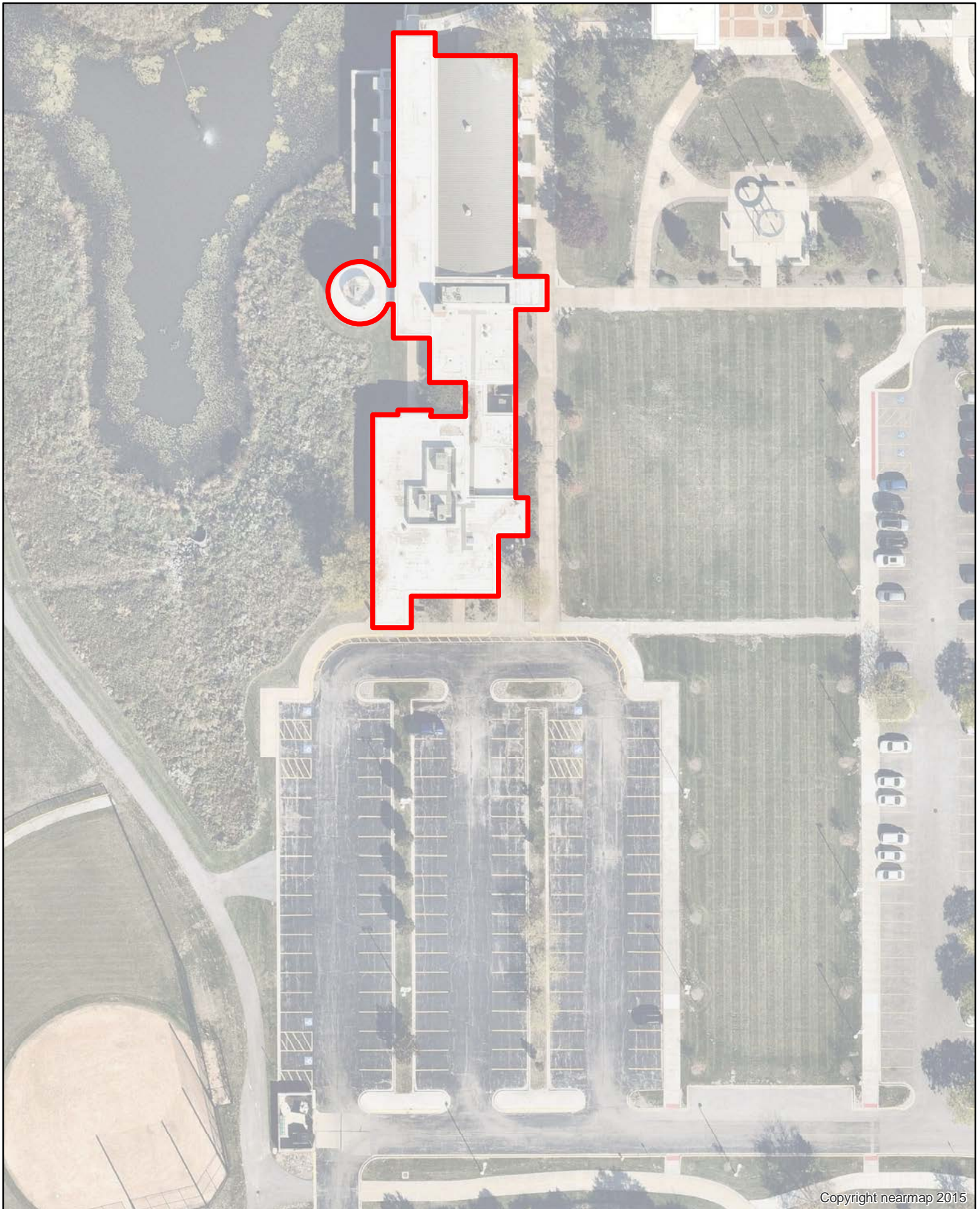


Copyright nearmap 2015

Village Hall - 50,000 square footage
14700 Ravinia Ave



The map is for reference only.
The Village makes no representations as to
the accuracy of the depicted property lines.
The data is subject to change
without notice. The Village of Oakland Park
assumes no liability in the use or application
of the data.
Reproduction or redistribution is forbidden
without the expressed written consent from
the Village of Oakland Park.



Copyright nearmap 2015

Civic Center - 14,675 square footage
14750 Ravinia Ave



This map is for reference only.
The Village makes no representations as to
the accuracy of the depicted property lines.
The data is subject to change
without notice. The Village of Orland Park
assumes no liability in the use or application
of the data.
Reproduction or redistribution is forbidden
without the expressed written consent from
the Village of Orland Park.

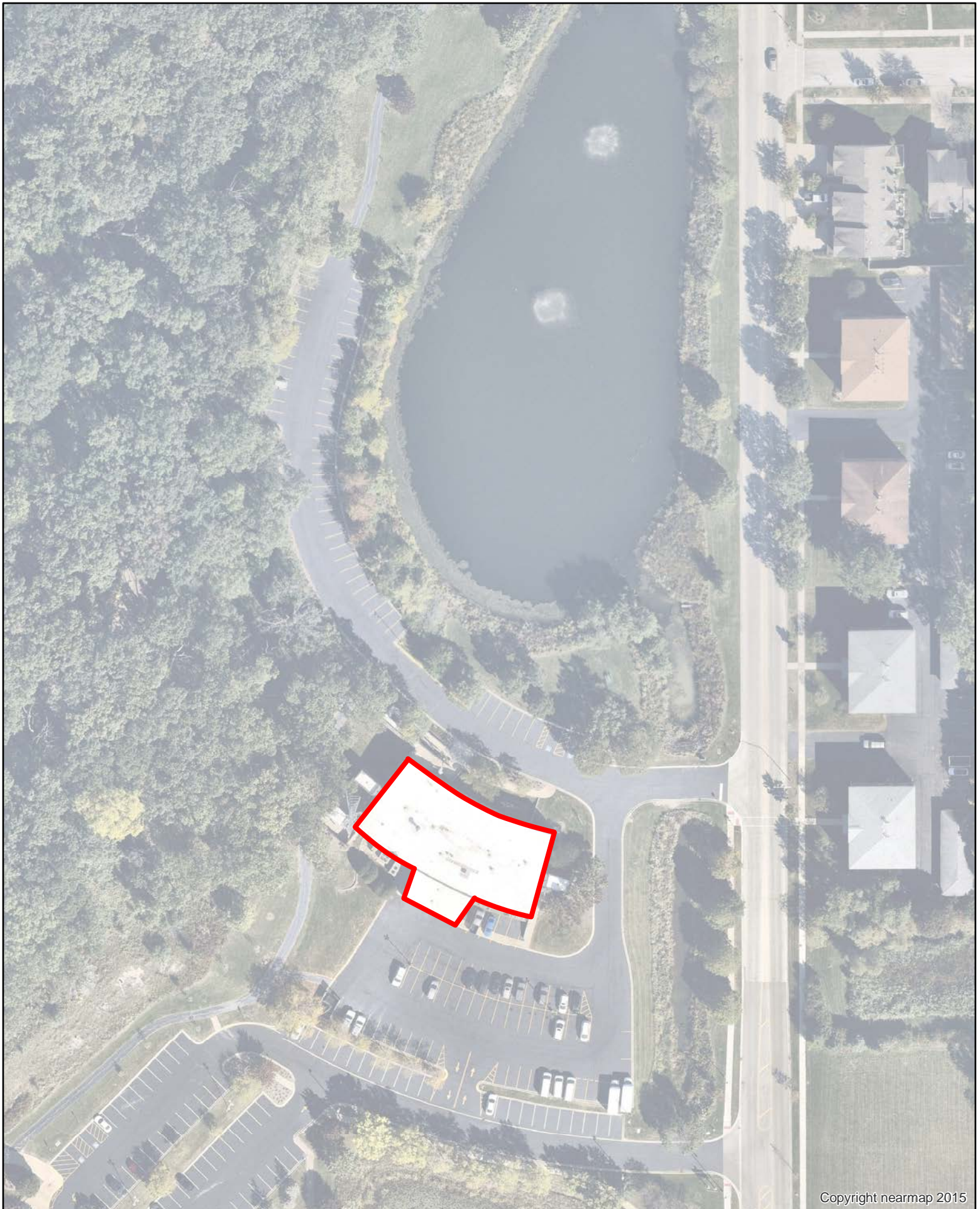


Copyright nearmap 2015

Franklin Loebe Center - 13,125 square footage
14650 Ravinia Ave



This map is for reference only.
The Village makes no representations as to
the accuracy of the depicted property lines.
The data is subject to change
without notice. The Village of O'Fallon Park
assumes no liability in the use or application
of the data.
Reproduction or redistribution is forbidden
without the expressed written consent from
the Village of O'Fallon Park.

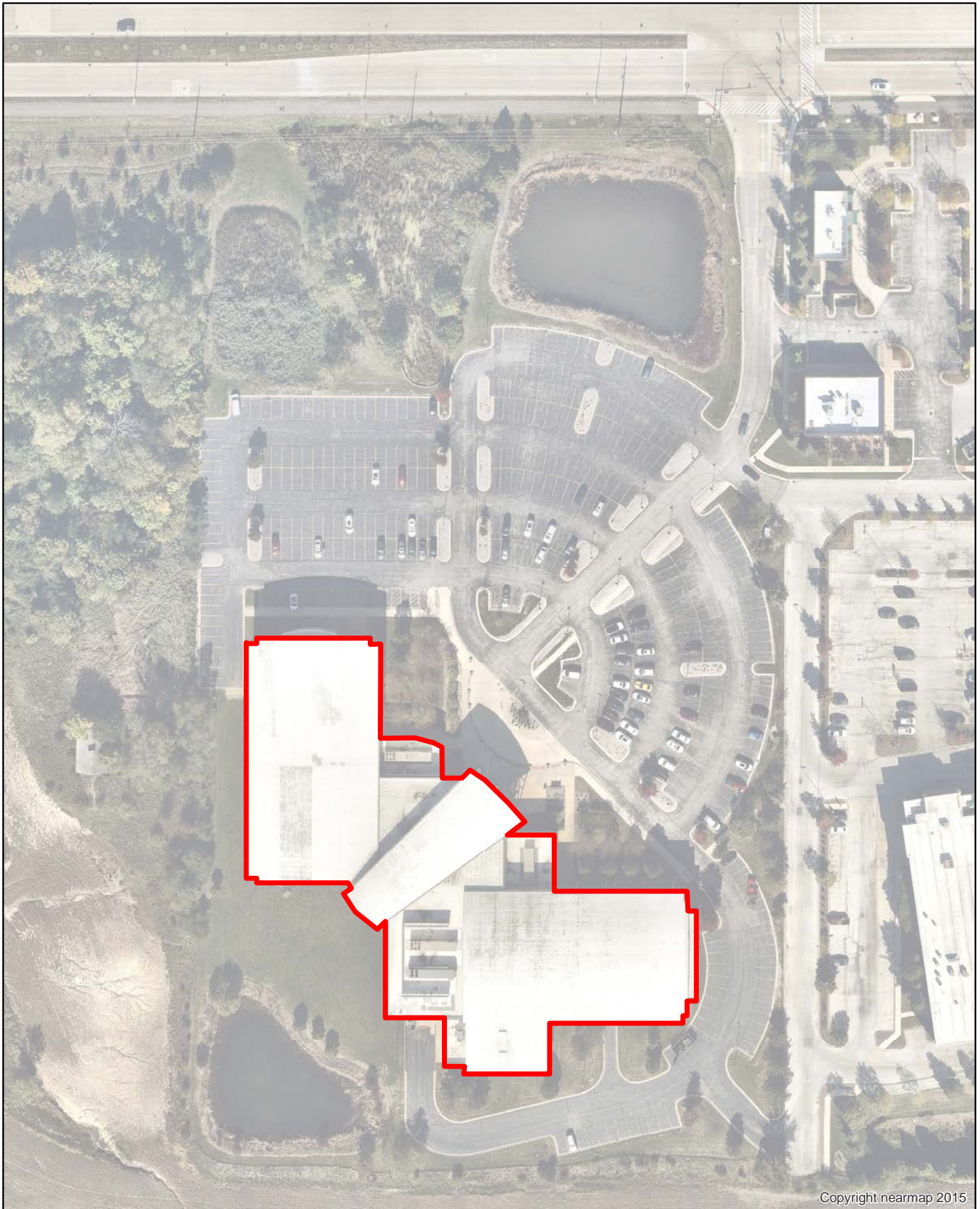


Copyright nearmap 2015

Recreational Administration - 21,776 square footage
14600 Ravinia Ave



This map is for reference only.
The Village makes no representations as to
the accuracy of the depicted property lines.
The data is subject to change without notice.
The Village of Orland Park assumes no liability in the use or application
of the data.
Reproduction or redistribution is forbidden
without the expressed written consent from
the Village of Orland Park.

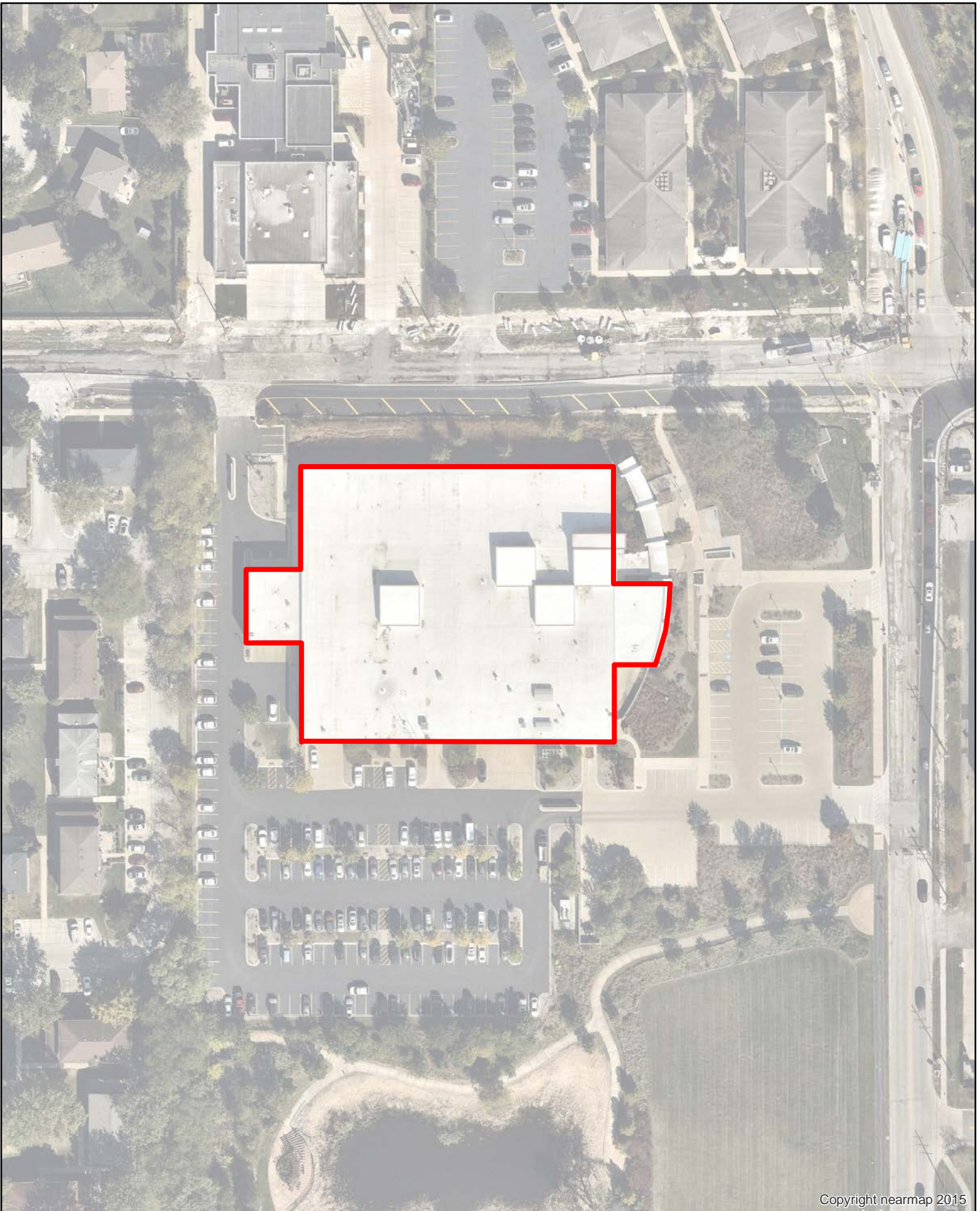


Copyright nearmap 2015

SportsPlex - 89,000 square footage
11351 W 159th St



This map is for reference only.
The Village makes no representations as to
the accuracy of the depicted property lines.
The data is subject to change
without notice. The Village of Otland Park
assumes no liability in the use or application
of the data.
Reproduction or redistribution is forbidden
without the expressed written consent from
the Village of Otland Park.

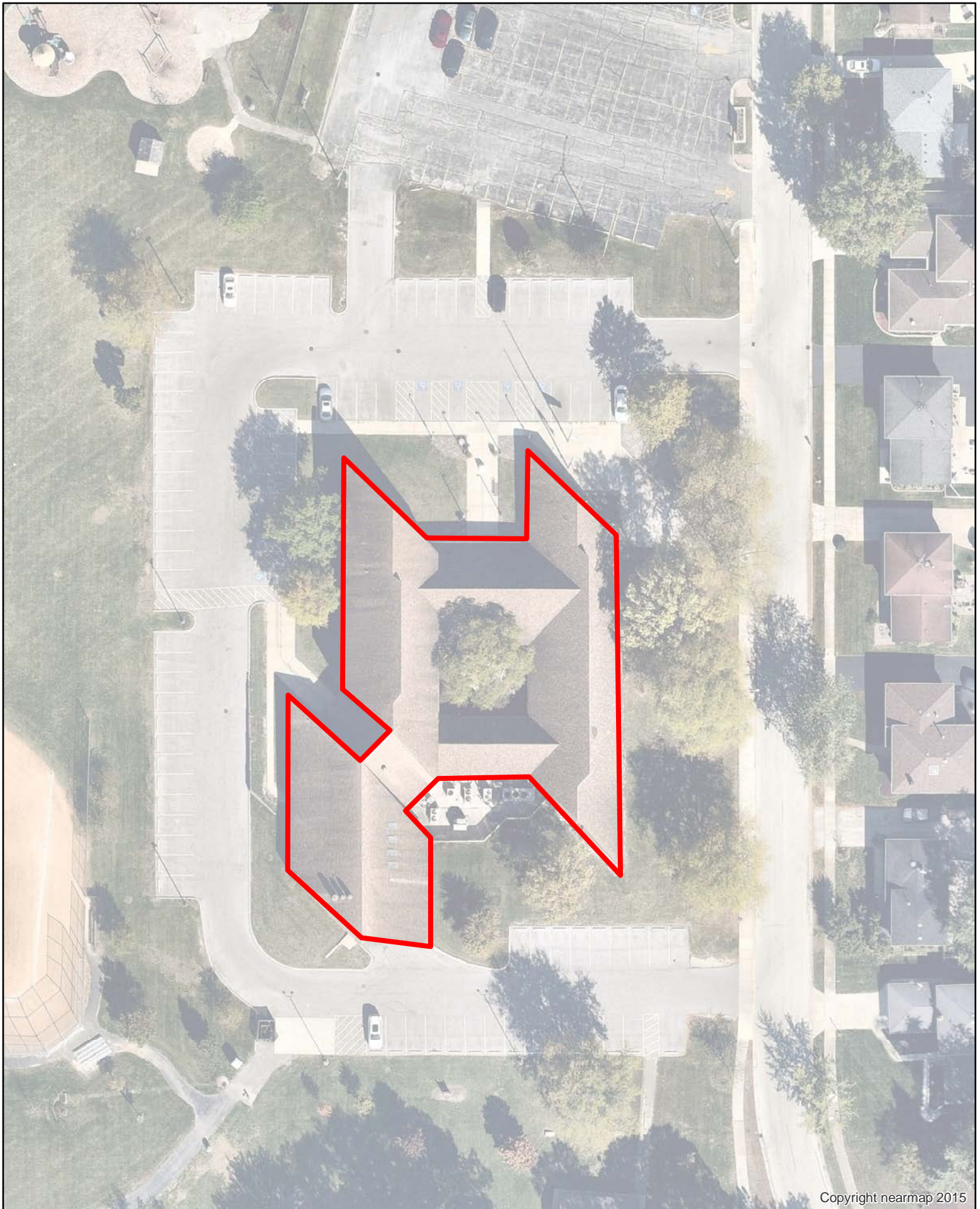


Copyright nearmap 2015

Police Department - 60,200 square footage
151st St & Ravinia Ave



The map is for reference only.
The Village makes no representations as to
the accuracy of the depicted property lines.
The data is subject to change
without notice. The Village of Oland Park
assumes no liability in the use or application
of the data.
Reproduction or redistribution is forbidden
without the expressed written consent from
the Village of Oland Park.

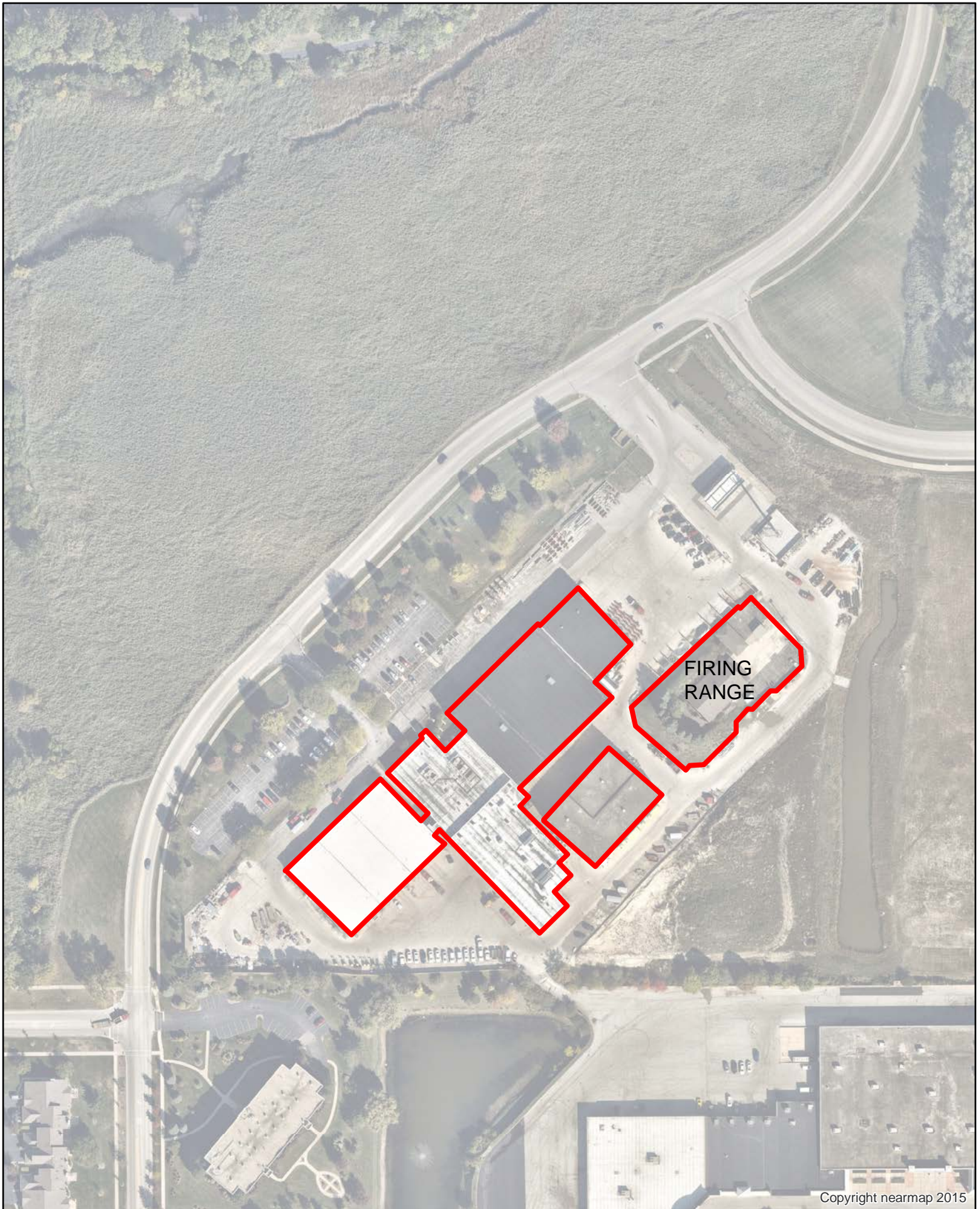


Copyright nearmap 2015

Cultural Arts Center - 22,000 square footage
14760 Park Ln



This map is for reference only.
The Village makes no representations as to
the accuracy of the depicted property lines.
The data is subject to change
without notice. The Village of Oland Park
assumes no liability in the use or application
of the data.
Reproduction or redistribution is forbidden
without the expressed written consent from
the Village of Oland Park.

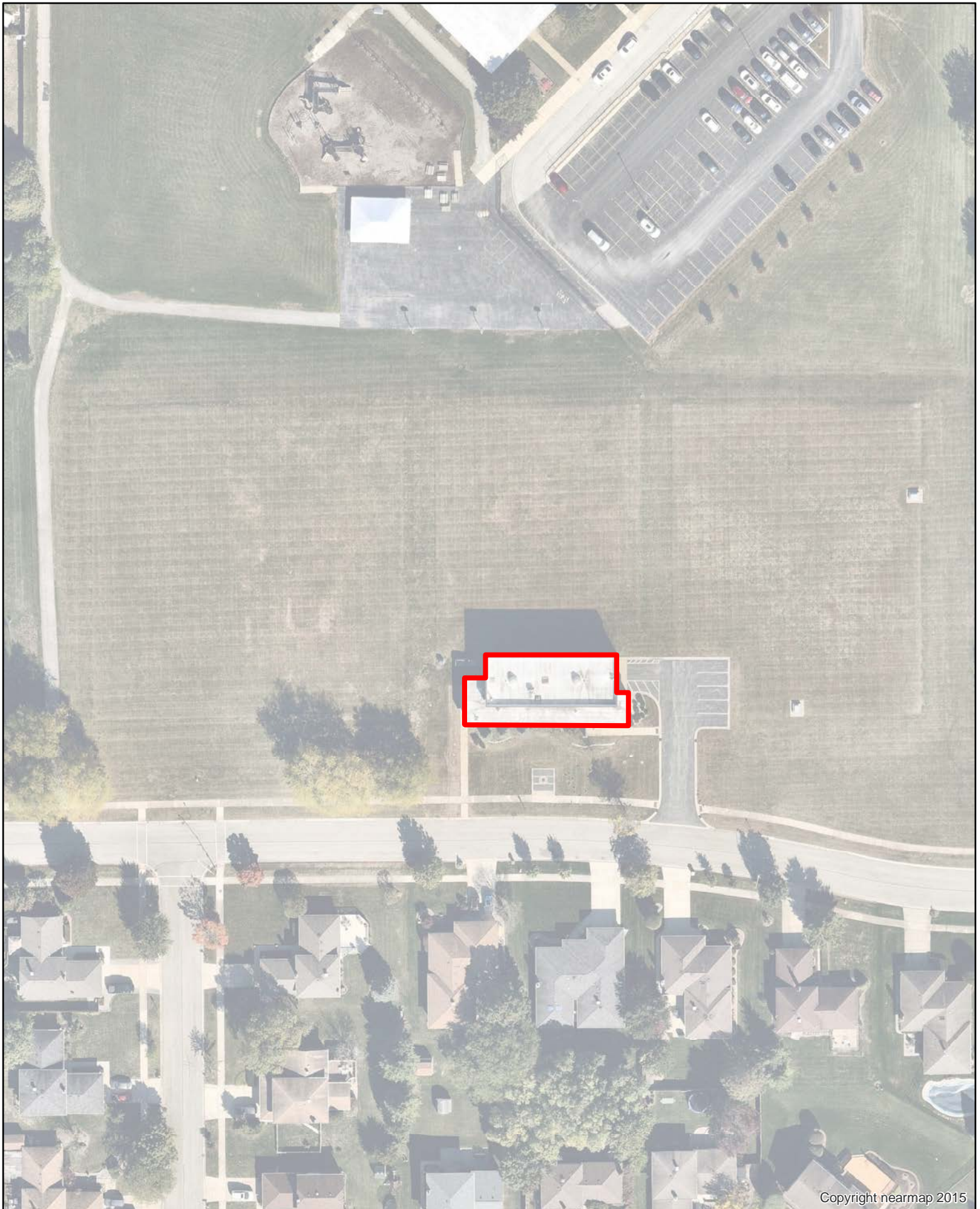


Copyright nearmap 2015

Public Works Department - 106,969 square footage
15655 S Ravinia Ave



This map is for reference only.
The Village makes no representations as to
the accuracy of the depicted property lines.
The data is subject to change
without notice. The Village of Orland Park
assumes no liability in the use or application
of the data.
Reproduction or redistribution is forbidden
without the expressed written consent from
the Village of Orland Park.

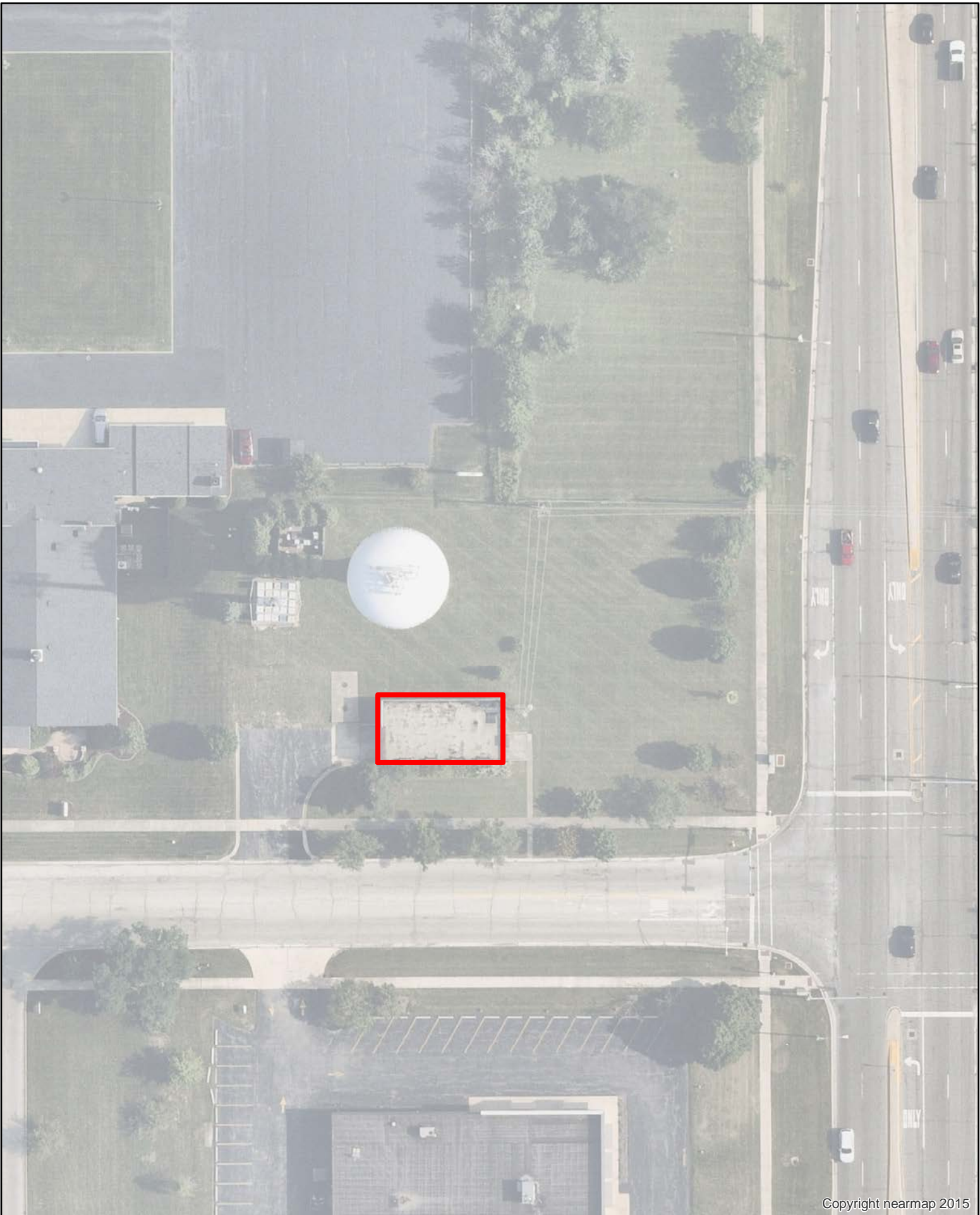


Copyright nearmap 2015

Thistlewood Pump Station - 5,225 square footage
8800 Thistlewood Dr



This map is for reference only.
The Village makes no representations as to
the accuracy of the depicted property lines.
The data is subject to change
without notice. The Village of Oland Park
assumes no liability in the use or application
of the data.
Reproduction or redistribution is forbidden
without the expressed written consent from
the Village of Oland Park.

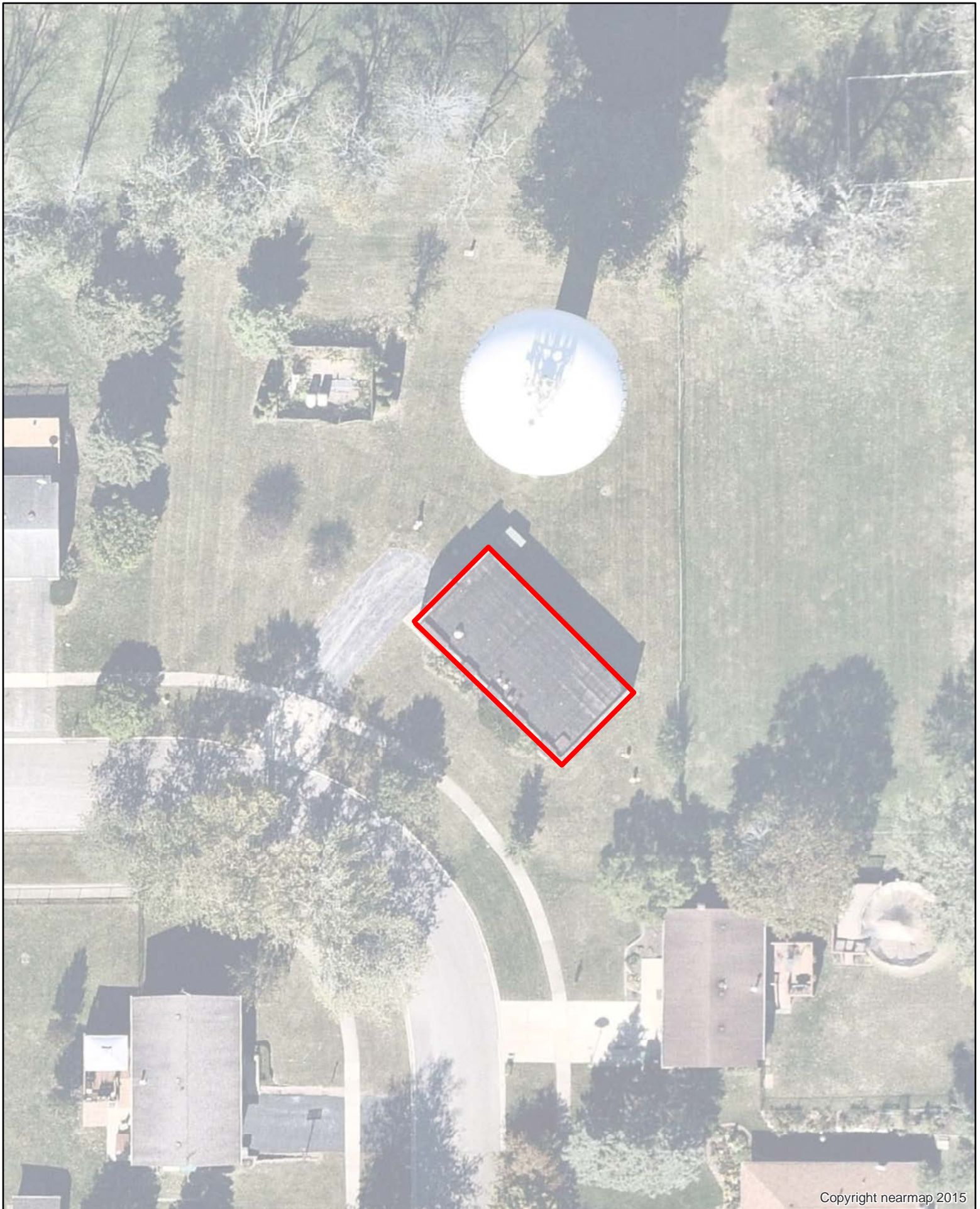


Copyright nearmap 2015

Well House #5 - 1,600 square footage
7200 Wheeler Dr



The map is for reference only.
The Village makes no representations as to
the accuracy of the depicted property lines.
The data is subject to change
without notice. The Village of Oland Park
assumes no liability in the use or application
of the data.
Reproduction or redistribution is forbidden
without the expressed written consent from
the Village of Oland Park.

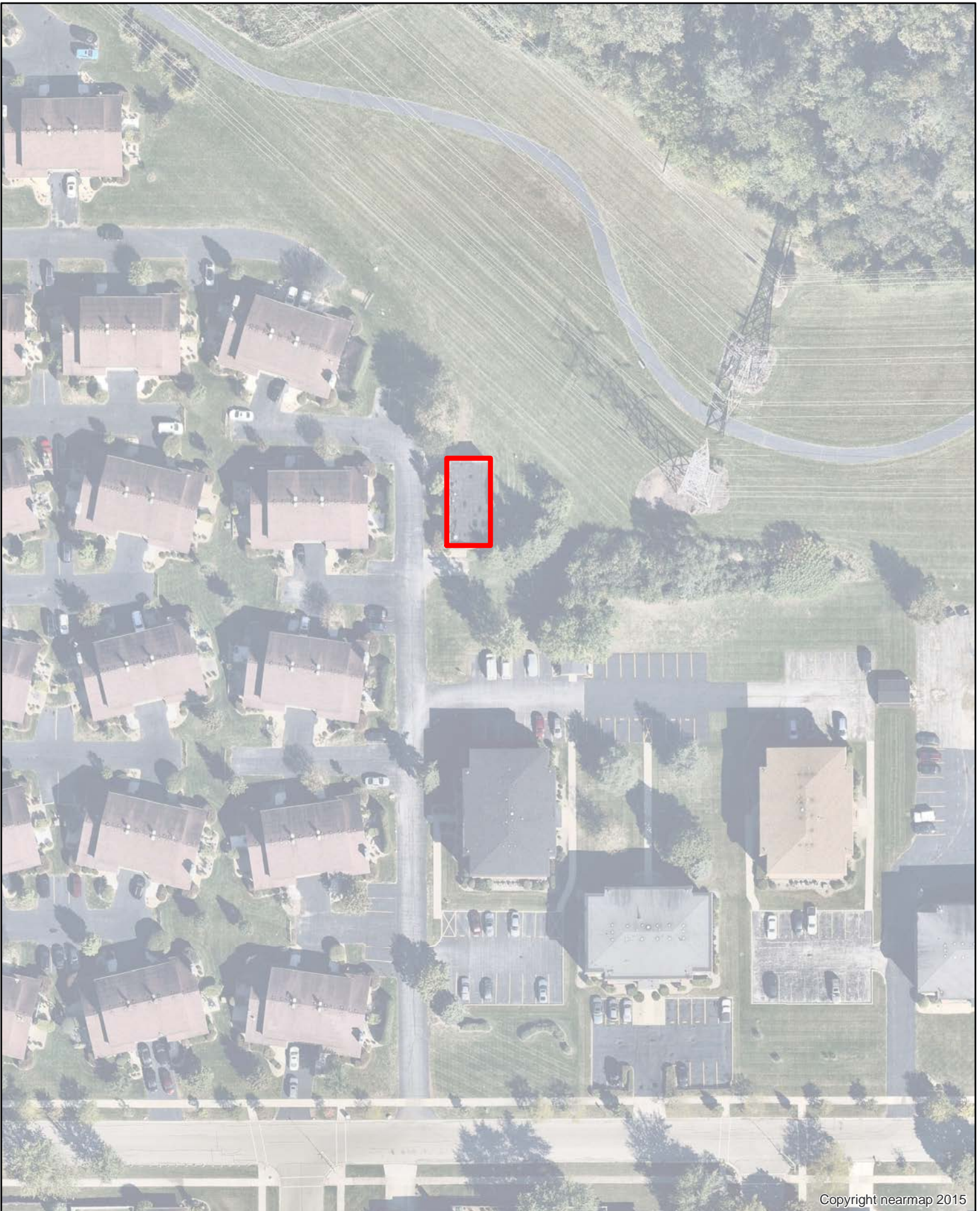


Copyright nearmap 2015

Well House #7 - 1,600 square footage
13605 Cherry Ln



This map is for reference only.
The Village makes no representations as to
the accuracy of the depicted property lines.
The data is subject to change
without notice. The Village of Oland Park
assumes no liability in the use or application
of the data.
Reproduction or redistribution is forbidden
without the expressed written consent from
the Village of Oland Park.

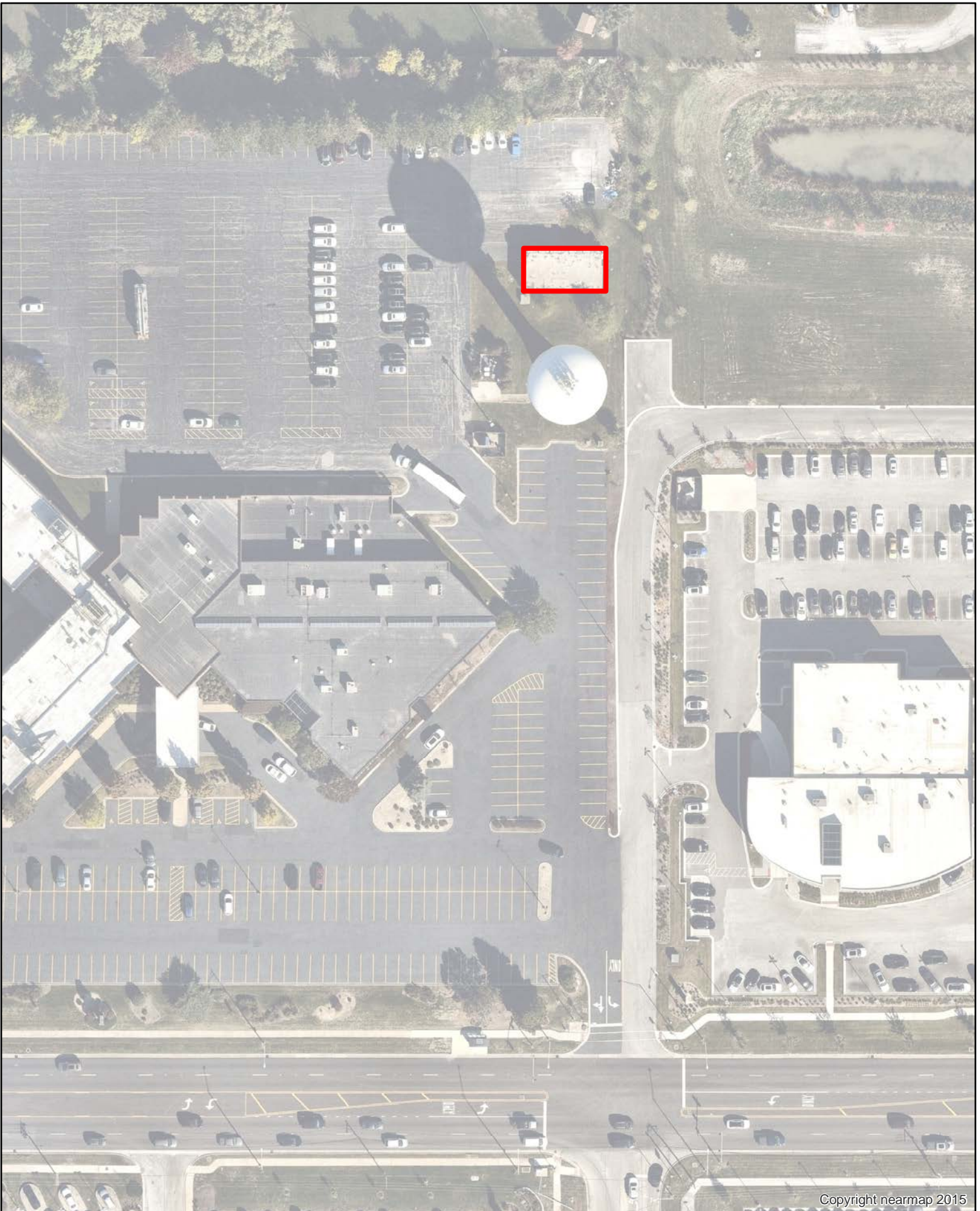


Copyright nearmap 2015

Williams Ct Well House #9 - 1,600 square footage
9210 140TH ST



This map is for reference only.
The Village makes no representations as to
the accuracy of the depicted property lines.
The data is subject to change
without notice. The Village of Otland Park
assumes no liability in the use or application
of the data.
Reproduction or redistribution is forbidden
without the expressed written consent from
the Village of Otland Park.



Copyright nearmap 2015

Well House #10 - 1,600 square footage
8799 159TH ST



This map is for reference only.
The Village makes no representations as to
the accuracy of the depicted property lines.
The data is subject to change
without notice. The Village of Otland Park
assumes no liability in the use or application
of the data.
Reproduction or redistribution is forbidden
without the expressed written consent from
the Village of Otland Park.



Copyright nearmap 2015

Bulk Storage Facility - 190,000 square footage
14120 108th Ave



This map is for reference only.
The Village makes no representations as to
the accuracy of the depicted property lines.
The data is subject to change
without notice. The Village of Otland Park
assumes no liability in the use or application
of the data.
Reproduction or redistribution is forbidden
without the expressed written consent from
the Village of Otland Park.

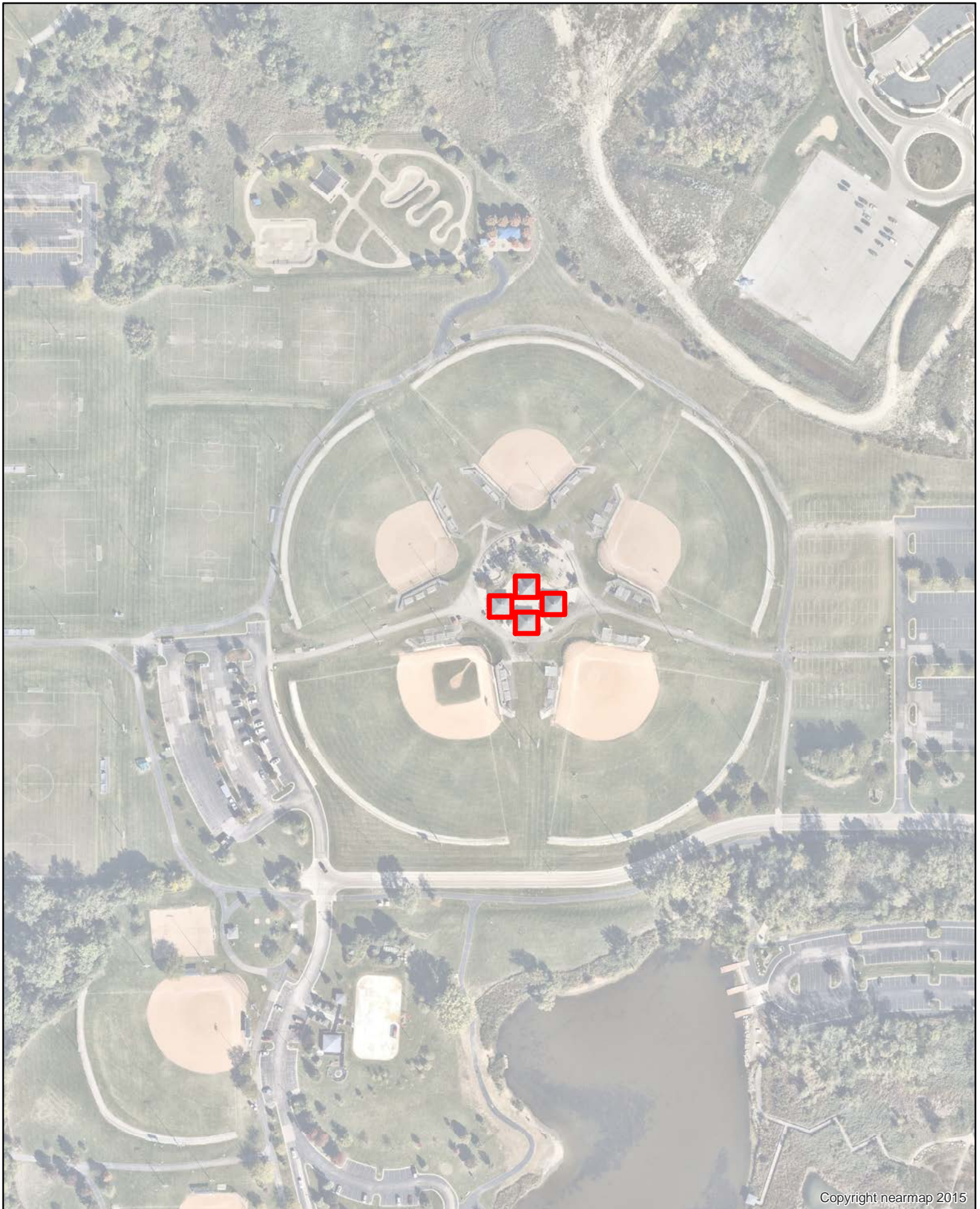


Copyright nearmap 2015

Centennial Park Aquatic Center - 9,104
15530 West Ave



This map is for reference only.
The Village makes no representations as to
the accuracy of the depicted property lines.
The data is liable to change
without notice. The Village of Centennial Park
assumes no liability in the use or application
of the data.
Reproduction or redistribution is forbidden
without the expressed written consent from
the Village of Centennial Park.

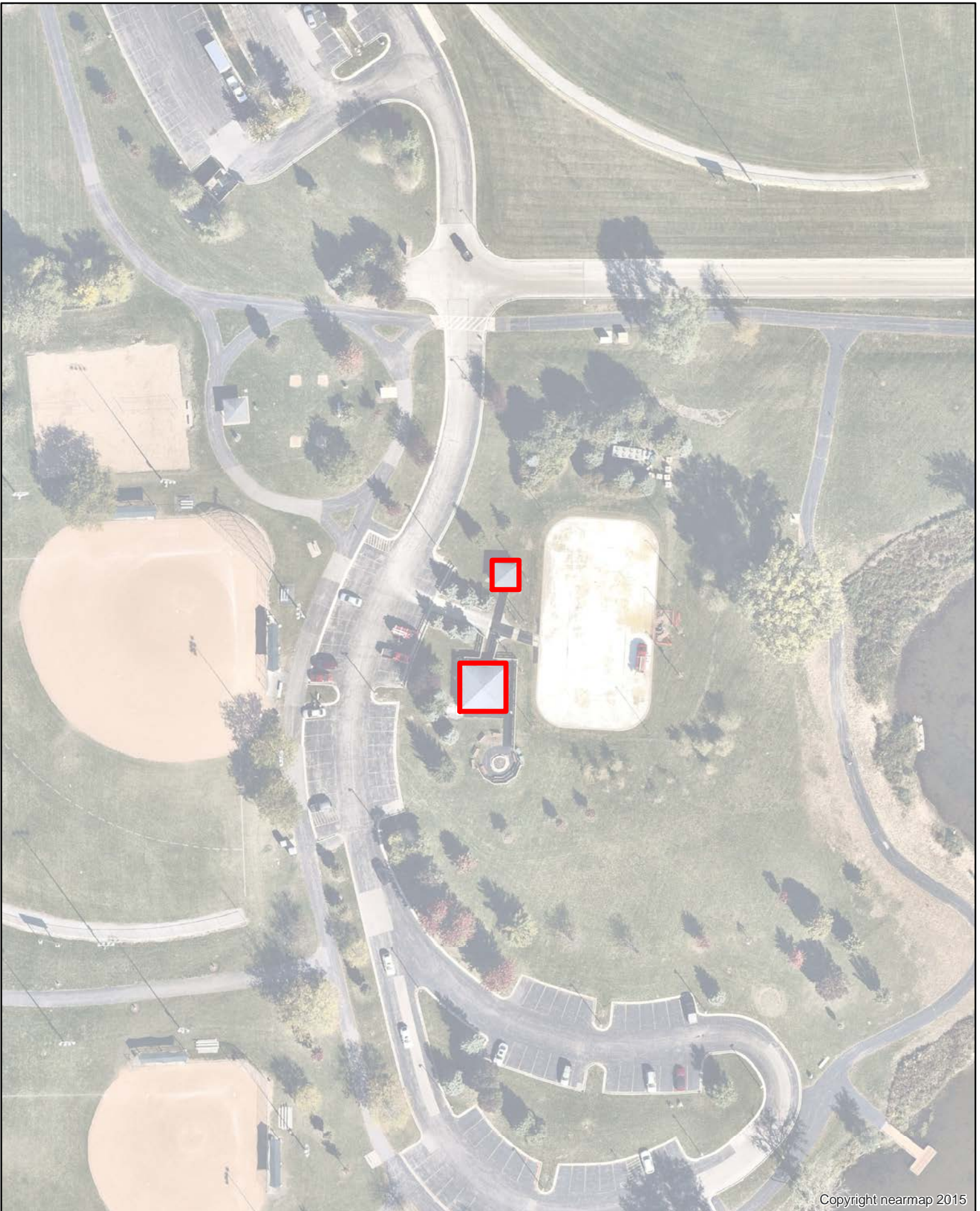


Copyright nearmap 2015

Centennial Park Concessions and Offices - 784
15530 West Ave



This map is for reference only.
The Village makes no representations as to
the accuracy of the depicted property lines.
The data is subject to change
without notice. The Village of Centennial Park
assumes no liability in the use or application
of the data.
Reproduction or redistribution is forbidden
without the expressed written consent from
the Village of Centennial Park.

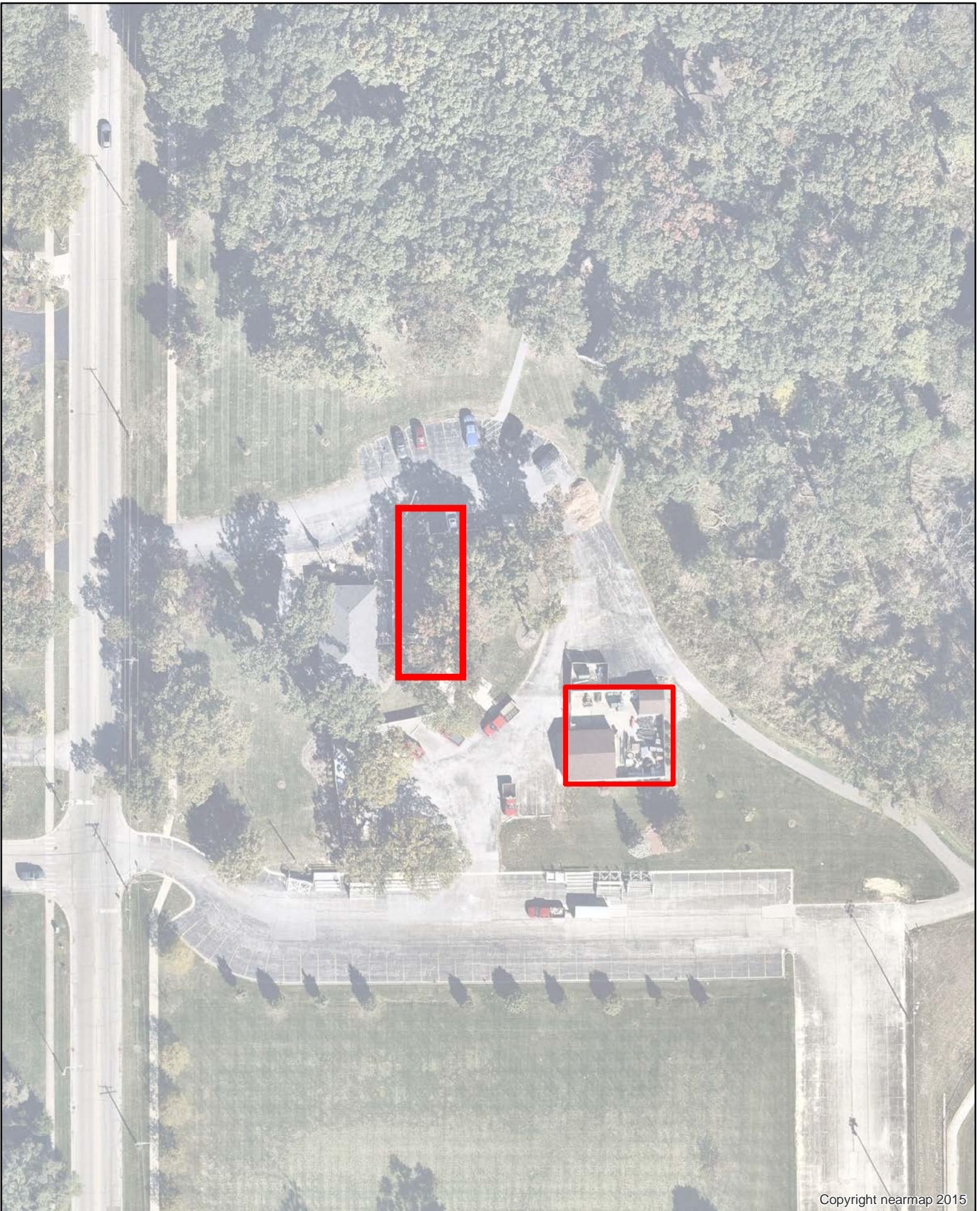


Copyright nearmap 2015

Centennial Park Ice Rink - 1300 sq ft
15530 West Ave



This map is for reference only.
The Village makes no representations as to
the accuracy of the depicted property lines.
The data is subject to change
without notice. The Village of Centennial Park
assumes no liability in the use or application
of the data.
Reproduction or redistribution is forbidden
without the expressed written consent from
the Village of Centennial Park.

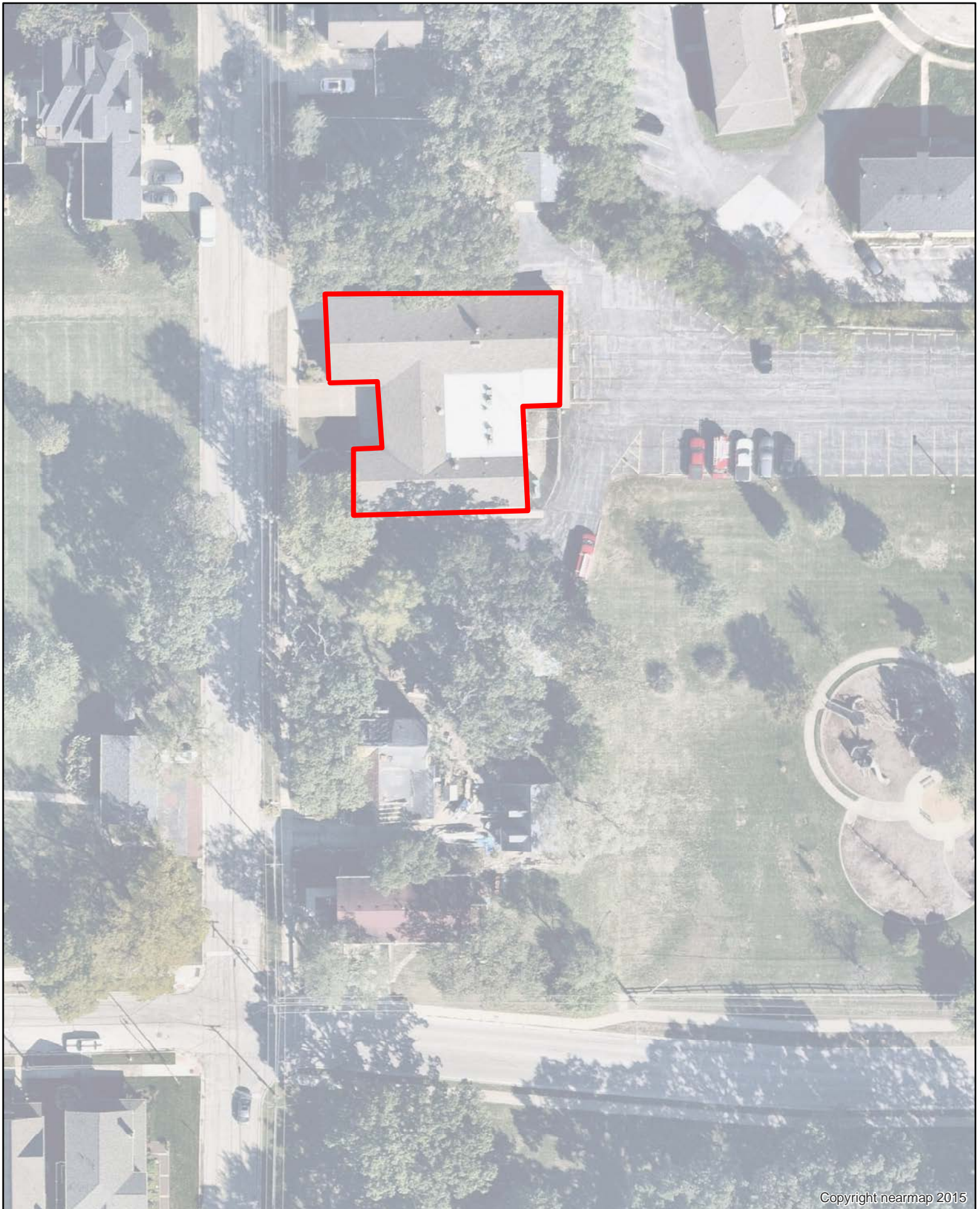


Copyright nearmap 2015

Park Admin and Maintenance Garage - 1000 sq ft
14671 West Ave



This map is for reference only.
The Village makes no representations as to
the accuracy of the depicted property lines.
The data is subject to change
without notice. The Village of Otland Park
assumes no liability in the use or application
of the data.
Reproduction or redistribution is forbidden
without the expressed written consent from
the Village of Otland Park.



Copyright nearmap 2015

Orland Park History Museum - 5,969 sq ft
14415 Beacon Ave



This map is for reference only.
The Village makes no representations as to
the accuracy of the depicted property lines.
The data is subject to change
without notice. The Village of Orland Park
assumes no liability in the use or application
of the data.
Reproduction or redistribution is forbidden
without the expressed written consent from
the Village of Orland Park.

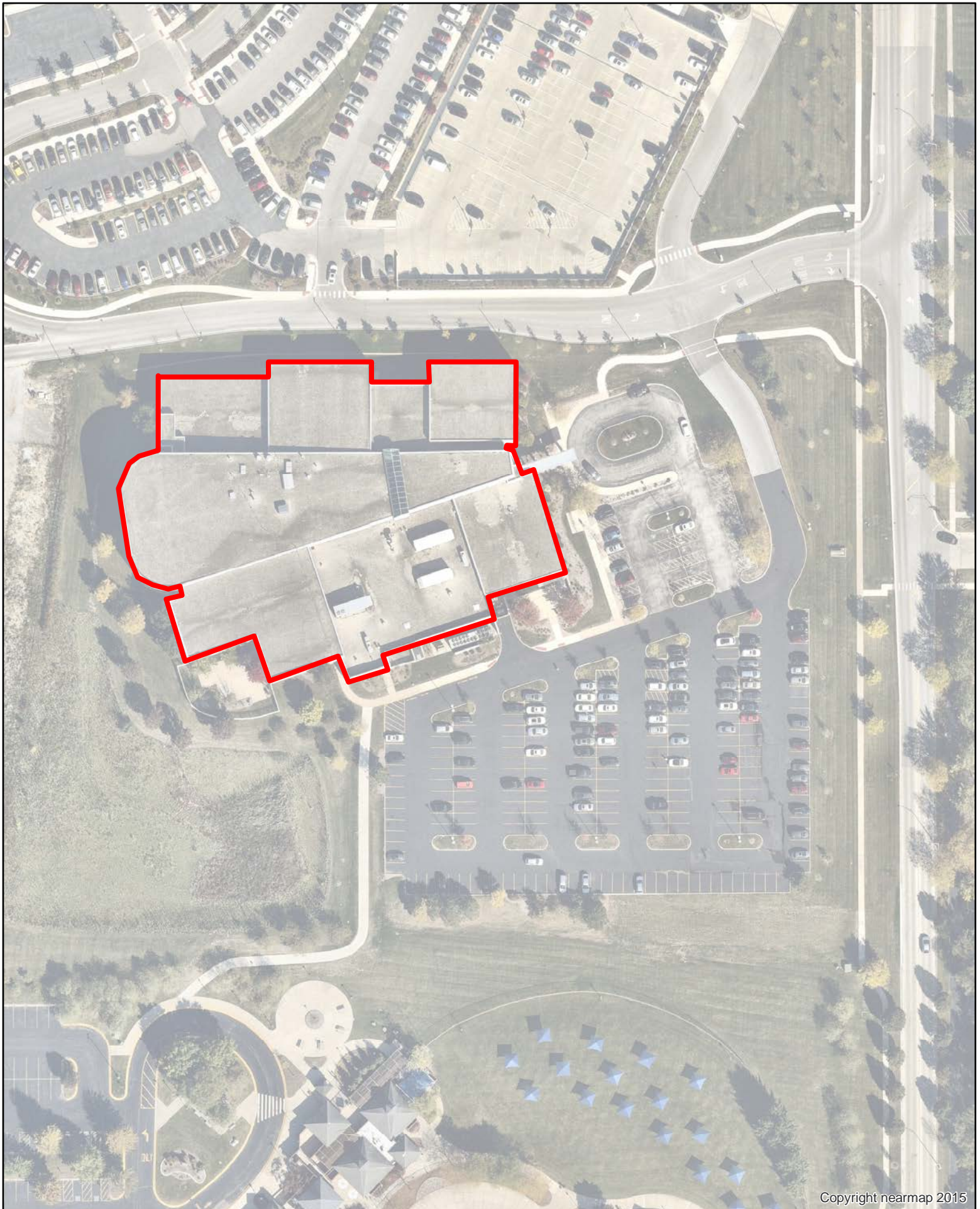


Copyright nearmap 2015

Veterans Center - 2,160 sq ft
15045 West Ave



This map is for reference only.
The Village makes no representations as to
the accuracy of the depicted property lines.
The data is subject to change
without notice. The Village of Oland Park
assumes no liability in the use or application
of the data.
Reproduction or redistribution is forbidden
without the expressed written consent from
the Village of Oland Park.



OP Health and Fitness - 79,000 sq ft
15430 West Ave



The map is for reference only.
The Village makes no representations as to
the accuracy of the depicted property lines.
The data is subject to change
without notice. The Village of Otland Park
assumes no liability in the use or application
of the data.
Reproduction or redistribution is forbidden
without the expressed written consent from
the Village of Otland Park.