

PLANNING DIVISION

APPROVED

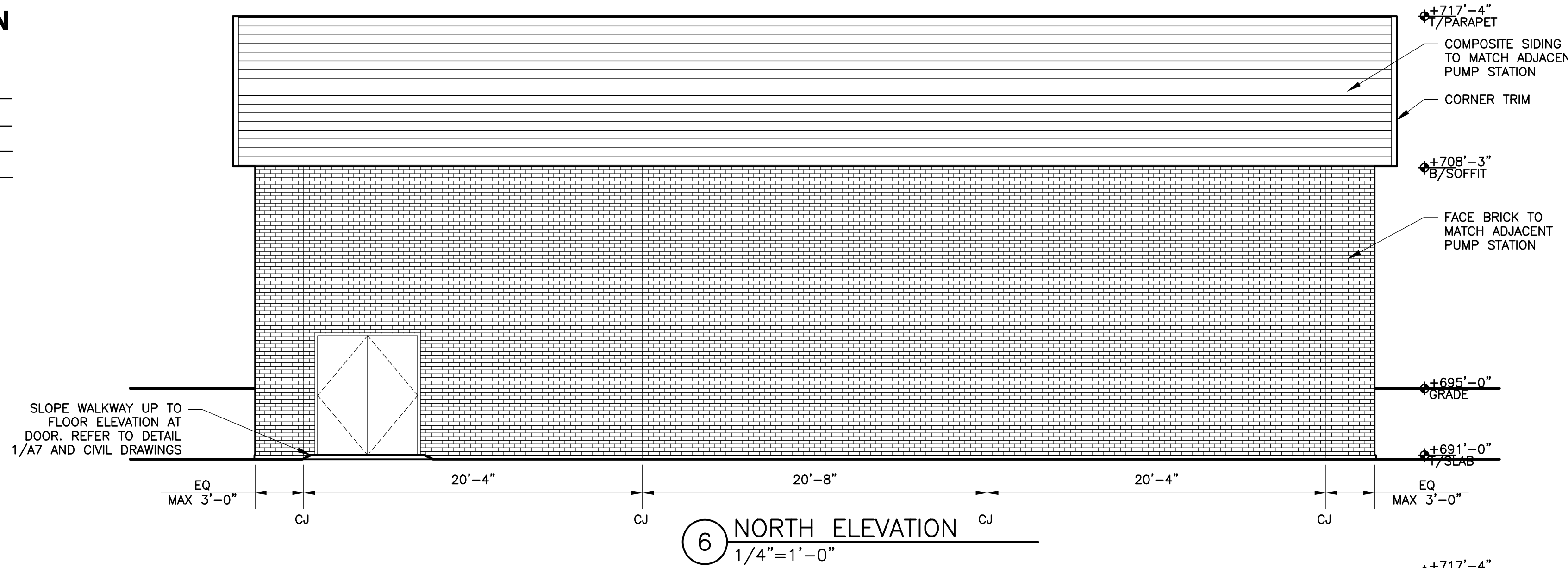
Case No: 2024-0168

Date: March 5, 2024

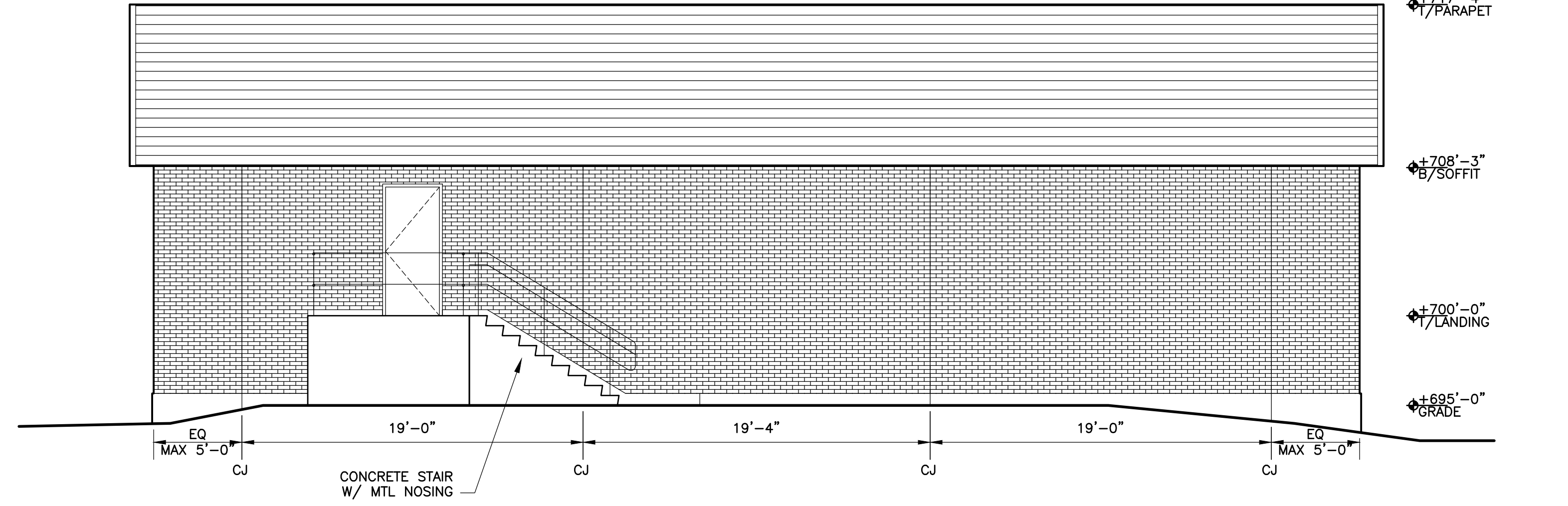
W/Conditions: Yes

W/Out Conditions:

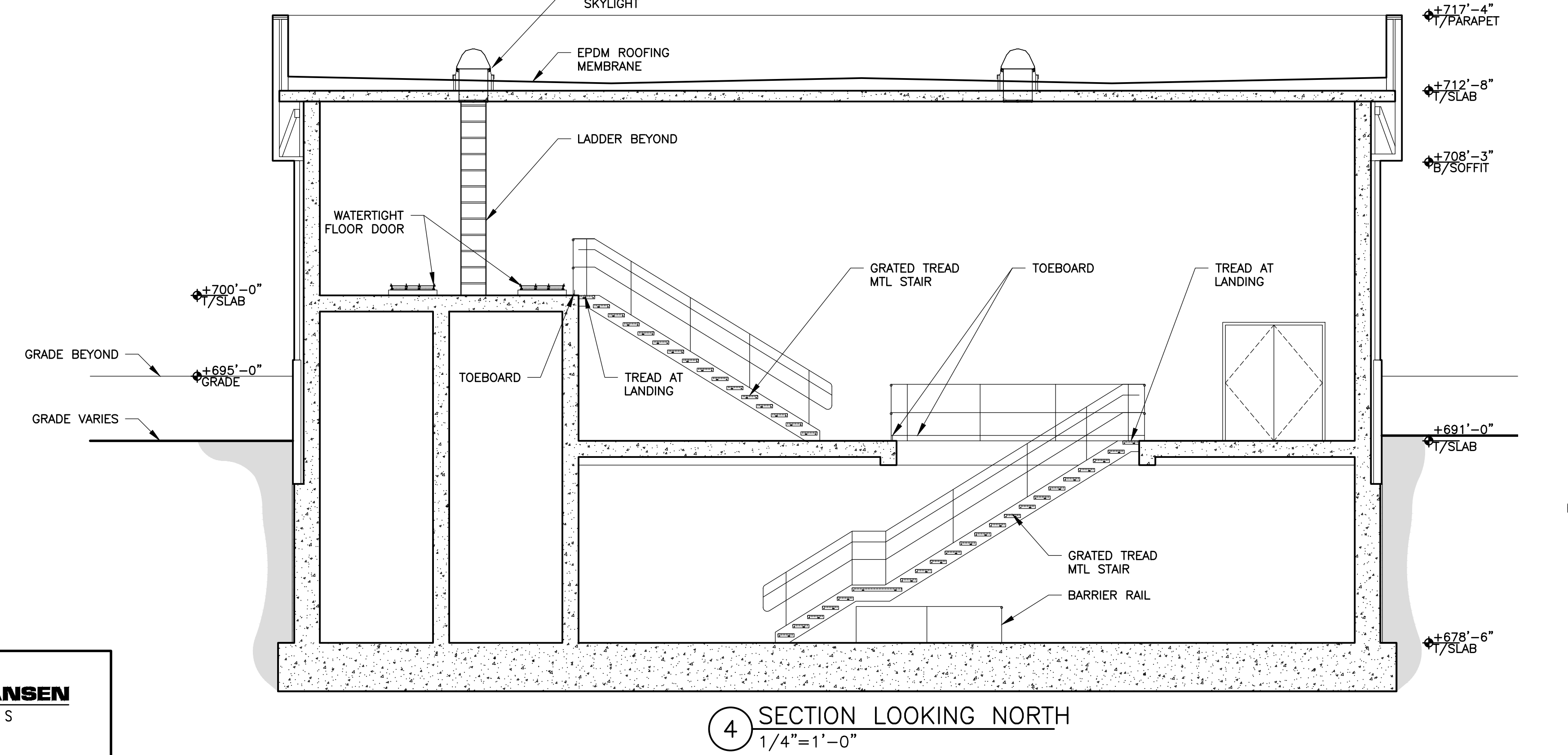
VILLAGE OF ORLAND PARK



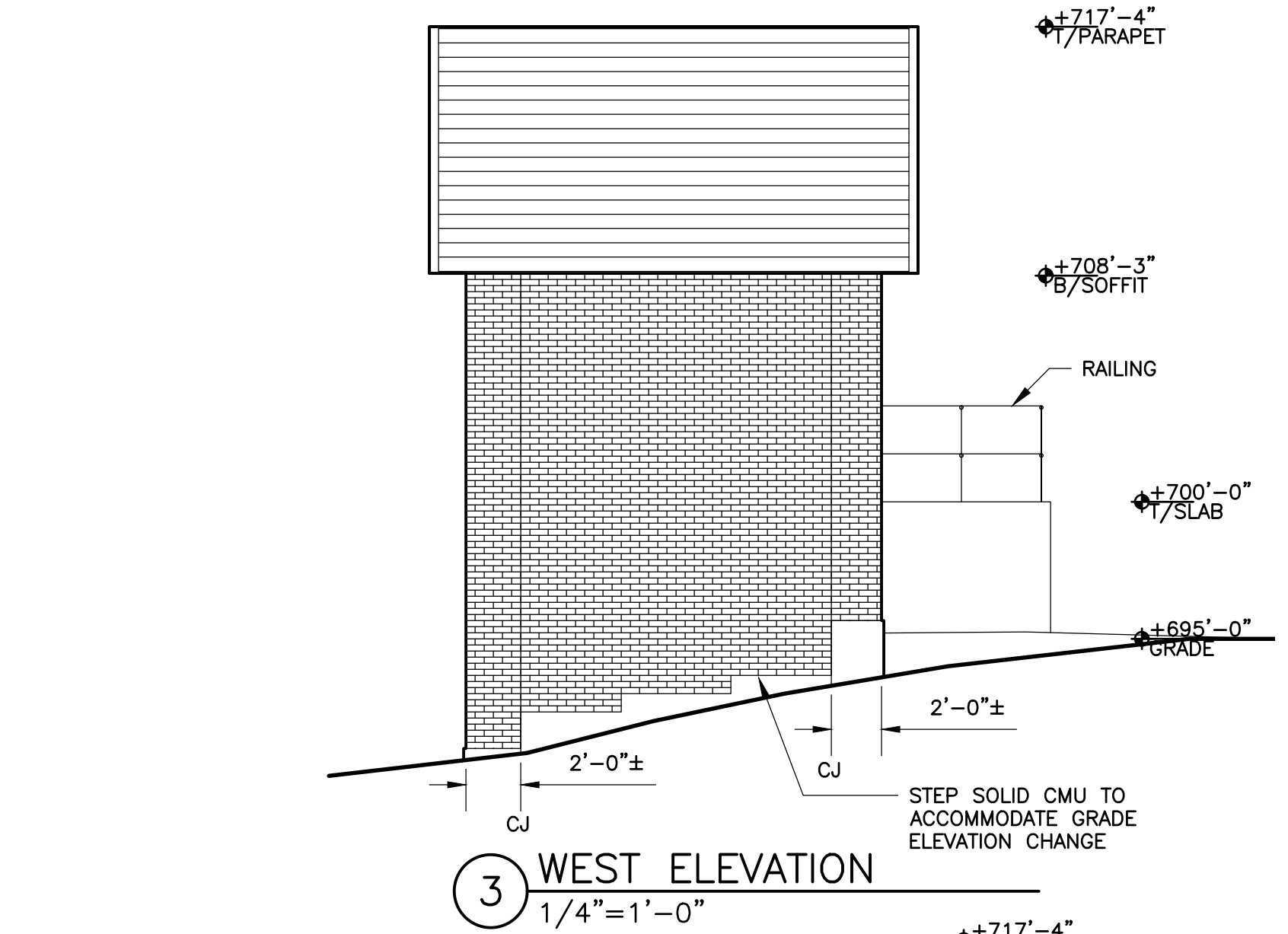
6 NORTH ELEVATION
1/4" = 1'-0"



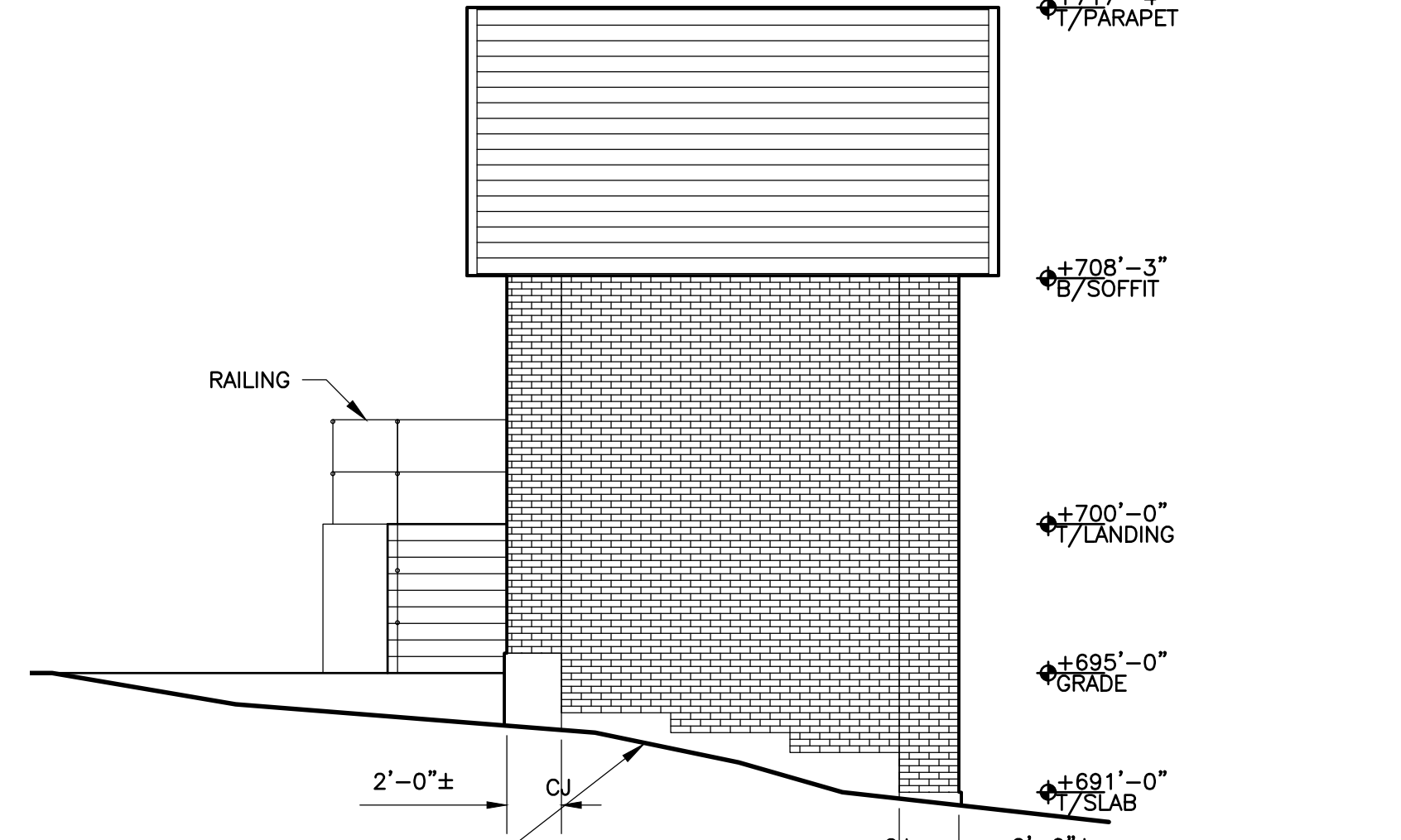
5 SOUTH ELEVATION
1/4" = 1'-0"



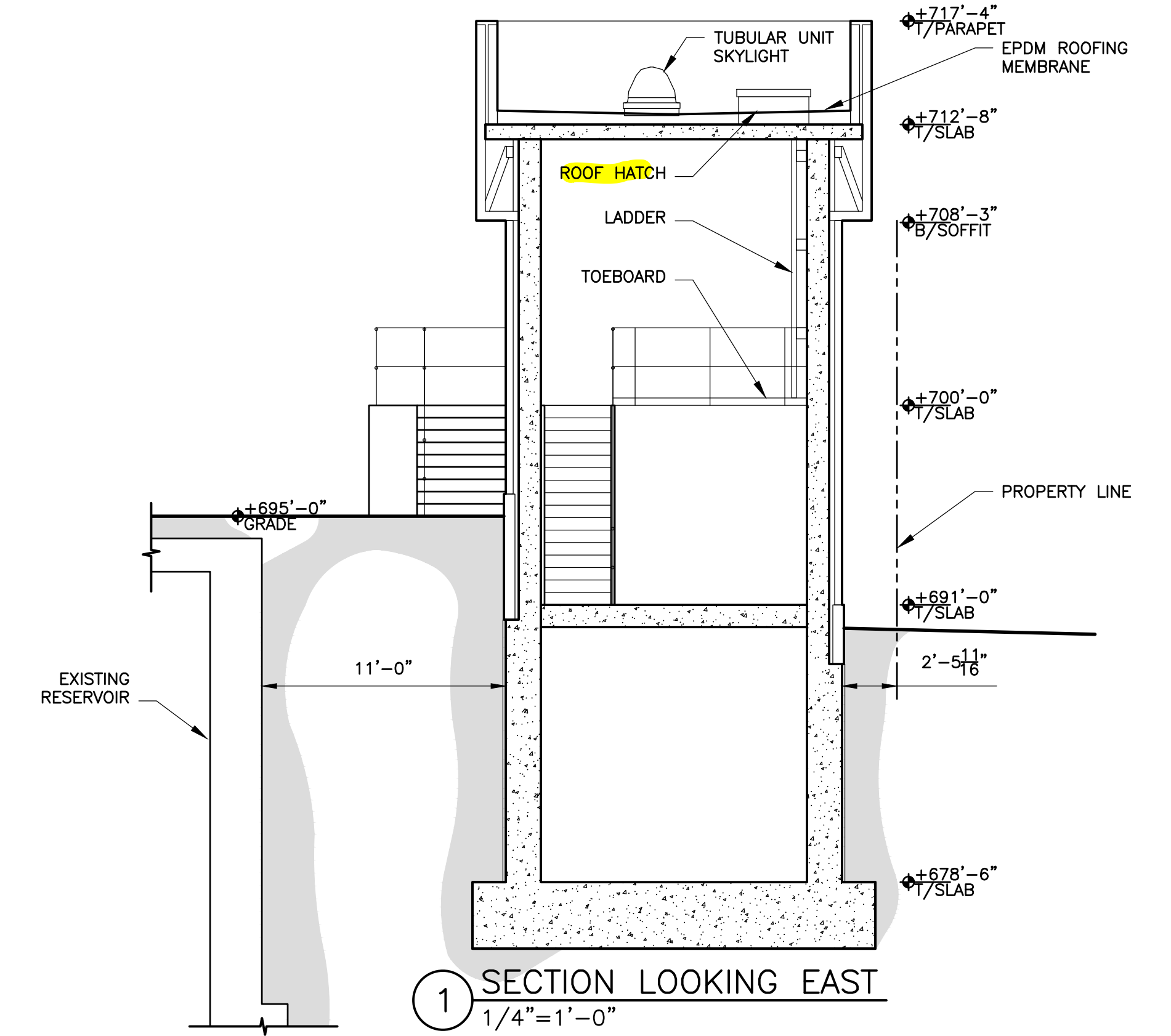
4 SECTION LOOKING NORTH
1/4" = 1'-0"



3 WEST ELEVATION
1/4" = 1'-0"



2 EAST ELEVATION
1/4" = 1'-0"



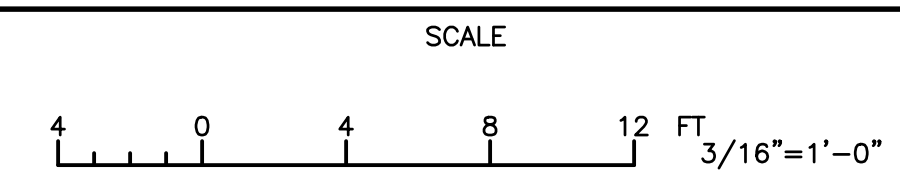
1 SECTION LOOKING EAST
1/4" = 1'-0"

GREELEY AND HANSEN
ARCHITECTS

GREELEY AND HANSEN
100 SOUTH WACKER DRIVE, SUITE 1400
CHICAGO, ILLINOIS 60606-4003

DESIGNED	JW	APPROVED	
DRAWN	JW		
CHECKED	TB		

NO.	DATE	APPD	REVISION



VILLAGE OF ORLAND PARK, ILLINOIS
DEPARTMENT OF PUBLIC WORKS
BID PACKAGE 7B - SPUR TWO MAIN

NORTH INTAKE STRUCTURE
ARCHITECTURAL
SECTIONS AND ELEVATIONS

CONFORMED DRAWING
SEE COVER SHEET FOR
"CONFORMED DRAWINGS NOTE"

FILE NAME:	0667G_A4.DWG
DWG	A4
SHEET	68 OF 94
DATE	JANUARY 2023
REV	0

K:\0667_CDM_SMITH\0667G_ORLANDPARK_SPUR2MAIN\04-DESIGN\CIVIL3D\DRAWING\CONTRACT\0667G_A4_2023\04\11 4:30 PM VARGAS, MONICA