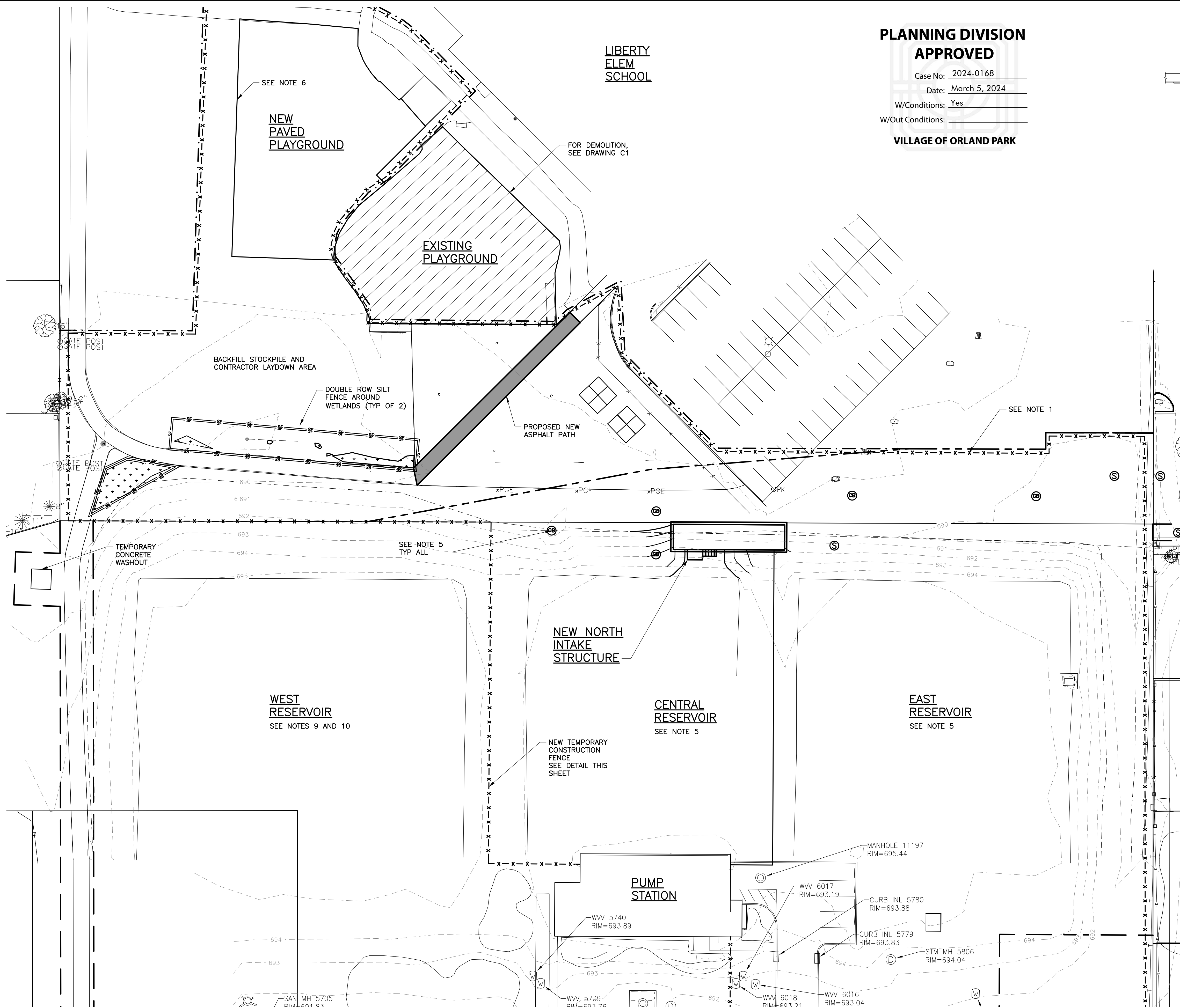


K:\0667_CDM SMITH\0667G_ORLANDPARK_SPUR2MAIN\04-DESIGN\CIVIL3D\DRAWING\CONTRACT\0667G_C3_2023\04\11 4:21 PM VARGAS, MONICA



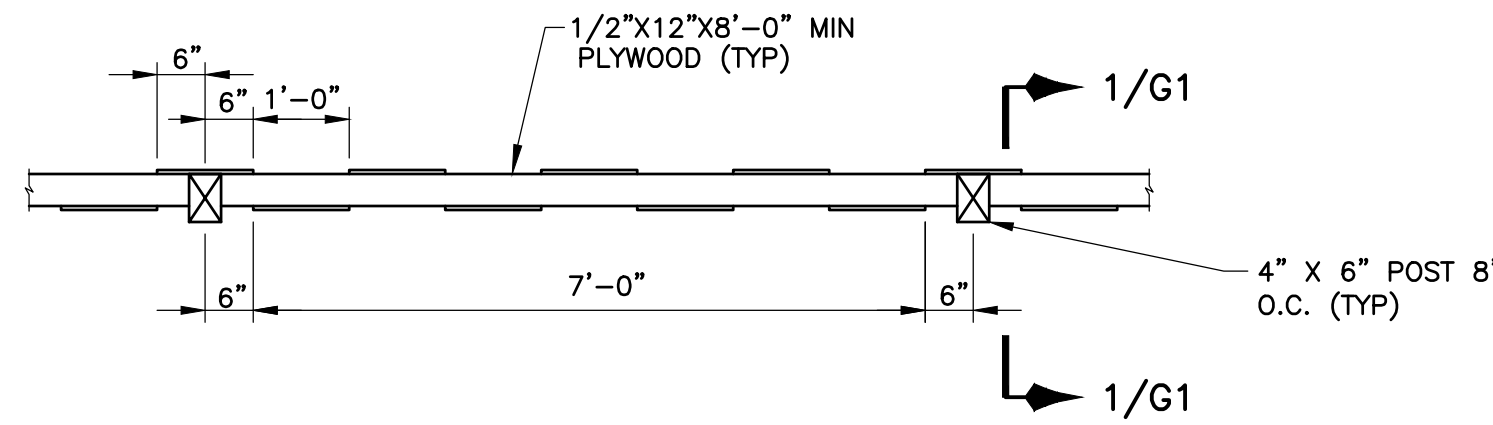
EROSION CONTROL PLAN

SCALE: 1" = 30'

**PLANNING DIVISION
APPROVED**

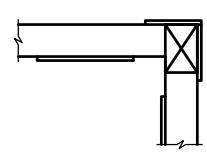
Case No: 2024-0168
Date: March 5, 2024
W/Conditions: Yes
W/Out Conditions:

VILLAGE OF ORLAND PARK



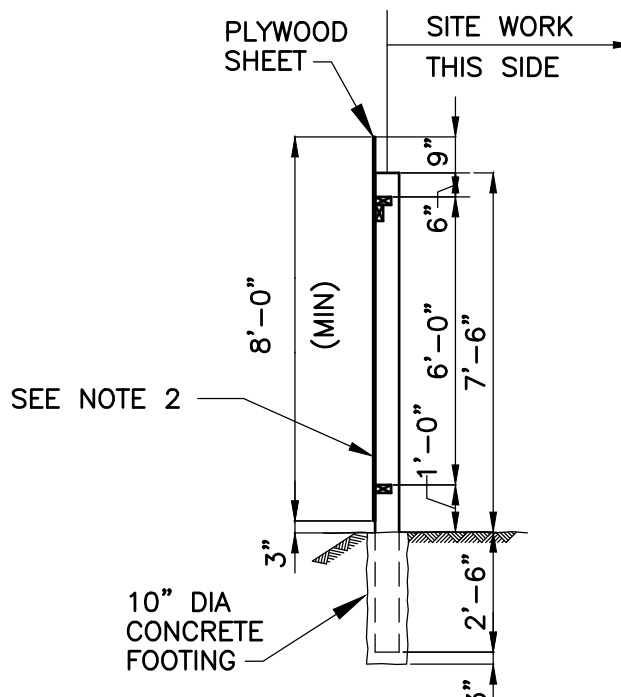
PARTIAL PLAN

SCALE: 1/2" = 1'-0"



**PARTIAL PLAN
AT CORNER (TYP)**

SCALE: 1/2" = 1'-0"



SECTION 1/G1

SCALE: 1/4" = 1'-0"

TEMPORARY CONSTRUCTION FENCE DETAILS

NOTES:

- LOCATE TEMPORARY FENCE 5'-0" FROM EDGE OF EASEMENT. MAINTAIN SPACE BETWEEN TEMPORARY FENCING AND THE EAST PROPERTY LINE. PROVIDE ADDITIONAL ACCESS GATES AS APPROVED BY OWNER.
- INCORPORATE SILT FENCE DETAIL DETAILS 1A AND 1B ON DWG C21 INTO FENCE AS SHOWN ON THIS DWG AT ALL LOCATIONS EXCEPT FOR THE NORTH-SOUTH FENCE BETWEEN EXISTING RESERVOIRS. REMOVE TRAPPED SEDIMENT WHENEVER SIGNIFICANT ACCUMULATION OCCURS. MAINTAIN FENCE IN GOOD REPAIR. REMOVE FENCING UPON COMPLETION OF FINAL ROUGH GRADING.
- PROTECT TOPSOIL STOCKPILE WITH SILT FENCE PER DETAILS 1A AND 1B ON DWG C21. STOCKPILES SHOULD NOT BE CONSTRUCTED ON IMPERVIOUS SURFACES AND SHALL BE A MINIMUM OF 50 FEET AWAY FROM STORMWATER INLETS.
- PROVIDE INLET PROTECTION AROUND ALL CATCH BASINS LOCATED WITHIN THE TEMPORARY CONSTRUCTION FENCE PER DETAIL 2 DWG C21. CLEAN AND REPLACE AS DIRECTED.
- NO CONSTRUCTION EQUIPMENT OR SOIL ALLOWED ON TOP OF RESERVOIRS.
- PROPOSED GRASS AREA (APPROX. 12,000 SQ FT) TO BE REPLACED BY PERMEABLE PAVEMENT FOR FUTURE SCHOOL PURPOSE. THE PERMEABLE PAVEMENT CONSIST OF POROUS ASPHALT PAVEMENT ON TOP OF A BASE COURSE THAT ALLOWS FOR INFILTRATION OF STORMWATER.
- LIMITS OF CONSTRUCTION ARE SHOWN AS THE ROADWAY RIGHT-OF-WAY LINES, EASEMENTS LINES, PROPERTY LINES, AND OTHER LIMIT LINES IDENTIFIED BY DASHED LINES OR TEMPORARY FENCING ON THE DRAWINGS. WHERE THE LIMITS OF CONSTRUCTION ARE NOT PROVIDED, LIMIT WORK TO NOT EXTEND BEYOND THE RIGHT-OF-WAY LINE OR AS APPROVED BY THE RESIDENT PROJECT REPRESENTATIVE.
- ROADWAY PAVEMENT RESTORATION AREA IS INDICATED WITH GRAY HATCHING ON DRAWINGS C5 THRU C19.

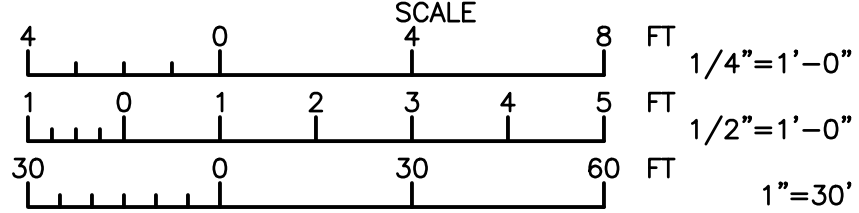
CONFORMED DRAWING
SEE COVER SHEET FOR
"CONFORMED DRAWINGS NOTE"

GREELEY AND HANSEN
100 SOUTH WACKER DRIVE, SUITE 1400
CHICAGO, ILLINOIS 60606-4003

DESIGNED AMS
DRAWN RKY
CHECKED TRB

APPROVED

NO.	DATE	APPD	REVISION



VILLAGE OF ORLAND PARK, ILLINOIS
DEPARTMENT OF PUBLIC WORKS

BID PACKAGE 7B - SPUR TWO MAIN

CIVIL

EROSION CONTROL PLAN

FILE NAME: 0667G_C3.DWG

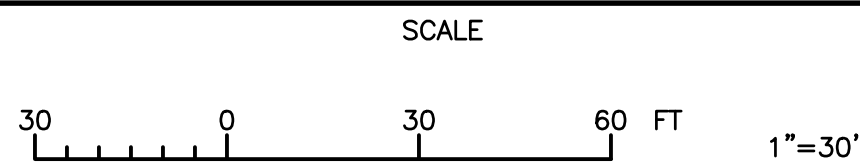
DWG **C3**
SHEET 21 OF 94
DATE JANUARY 2023 REV 0

K:\0667_CDM SMITH\0667G_ORLANDPARK_SPURTWO MAIN\04-DESIGN\CIVIL\DWG\DRAWING\CONTRACT\0667G_C4 2023\04\13 11:52 AM VARGAS, MONICA



SITE RESTORATION AND GRADING PLAN

SCALE: 1" = 30'



VILLAGE OF ORLAND PARK, ILLINOIS
DEPARTMENT OF PUBLIC WORKS

BID PACKAGE 7B - SPUR TWO MAIN

CIVIL

RESTORATION AND GRADING PLAN

PLANNING DIVISION APPROVED

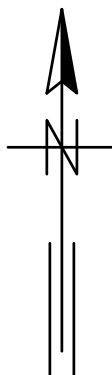
Case No: 2024-0168

Date: March 5, 2024

W/Conditions: Yes

W/Out Conditions:

VILLAGE OF ORLAND PARK



NOTES:

- REPLACE PATH AT CONCLUSION OF CONSTRUCTION PER DETAIL 4/G11.
- REPLACE SIDEWALK, CURB AND DAMAGED ASPHALT UPON COMPLETION OF CONSTRUCTION PER DETAILS ON DWG G12. PROVIDE STABILIZED CONSTRUCTION ENTRANCE DURING CONSTRUCTION PER DETAIL 6A OR 6B DWG C21. RESTORE AREAS UPON COMPLETION OF CONSTRUCTION.
- RELOCATE THREE (3) HALF COURT BASKETBALL HOOPS AND VERTICAL SUPPORT TO NEW PAVED PLAYGROUND. PROVIDE CLASS SI CONCRETE FOR FOUNDATION. ASSUME 0.5 CY OF CONCRETE PER HOOP.
- NO CONSTRUCTION EQUIPMENT OR SOIL ALLOWED ON TOP OF RESERVOIRS.
- CONTRACTOR TO FIELD LOCATE SHEETING AND SHORING NORTH OF CENTRAL AND EAST RESERVOIRS AND SUBMIT TO ENGINEER. NEW 36" PIPE TO BE ROUTED NORTH OF THE SHORING. DEMOLISH SHEETING AND SHORING AS REQUIRED TO CONSTRUCT NORTH INTAKE FACILITY.
- LIMITS OF CONSTRUCTION ARE SHOWN AS THE ROADWAY RIGHT-OF-WAY LINES, EASEMENTS LINES, PROPERTY LINES, AND OTHER LIMIT LINES IDENTIFIED BY DASHED LINES OR TEMPORARY FENCING ON THE DRAWINGS. WHERE THE LIMITS OF CONSTRUCTION ARE NOT PROVIDED, LIMIT WORK TO NOT EXTEND BEYOND THE RIGHT-OF-WAY LINE OR AS APPROVED BY THE RESIDENT PROJECT REPRESENTATIVE.
- ROADWAY PAVEMENT RESTORATION AREA IS INDICATED WITH GRAY HATCHING ON DRAWINGS C5 THRU C19.
- AFTER REMOVAL OF ASPHALT PLAY SURFACE BACKFILL WITH TOPSOIL, REGRADE TO ORIGINAL ELEVATIONS, AND SEED TO SPECIFICATIONS.

CONFORMED DRAWING
SEE COVER SHEET FOR
"CONFORMED DRAWINGS NOTE"

GREELEY AND HANSEN
100 SOUTH WACKER DRIVE, SUITE 1400
CHICAGO, ILLINOIS 60606-4003

DESIGNED AMS
DRAWN RKY
CHECKED TRB

APPROVED

NO.	DATE	BRG	APPD	REVISION
1	04/23	BRG		ADDENDUM 2

FILE NAME: 0667G_C4.DWG
DWG C4
SHEET 22 OF 94
DATE JANUARY 2023 REV 0