

# PRELIMINARY SITE PLAN FOR MEGAN NICOLE RIDGE SUBDIVISION

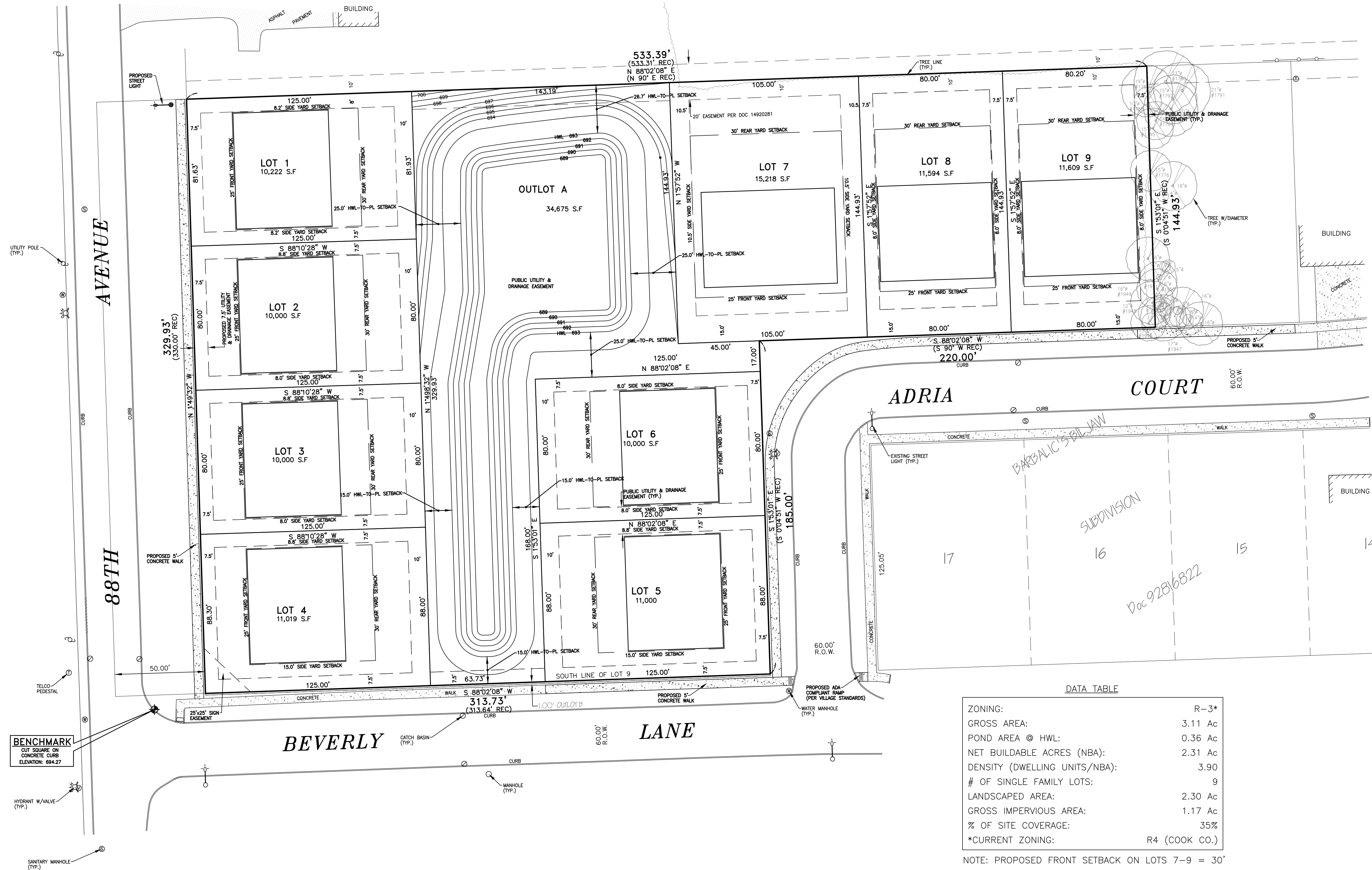
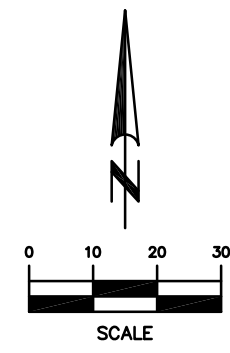
132ND STREET & 88TH AVENUE  
ORLAND PARK, IL

**LEGAL DESCRIPTION**

BEING A SUBDIVISION IN THE WEST HALF OF THE SOUTHWEST QUARTER OF SECTION 35, TOWNSHIP 37 NORTH, RANGE 12 EAST OF THE THIRD PRINCIPAL MERIDIAN, IN COOK COUNTY, ILLINOIS.

DEVELOPER:

DL3 SONS PROPERTIES INC.  
P.O. BOX 302  
MIDLOTHIAN, IL 60405  
(708) 612-1082



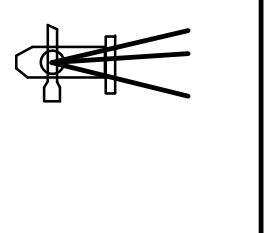
DATA TABLE

ZONING:	R-3*
GROSS AREA:	3.11 Ac
POND AREA @ HWL:	0.36 Ac
NET BUILDABLE ACRES (NBA):	2.31 Ac
DENSITY (DWELLING UNITS/NBA):	3.90
# OF SINGLE FAMILY LOTS:	9
LANDSCAPED AREA:	2.30 Ac
GROSS IMPERVIOUS AREA:	1.17 Ac
% OF SITE COVERAGE:	35%
*CURRENT ZONING:	R4 (COOK CO.)

NOTE: PROPOSED FRONT SETBACK ON LOTS 7-9 = 30'

REV.	DATE	REVISIONS
B.H.	7/8/19	ISSUED FOR REVIEW
B.H.	8/28/19	VILLAGE COMMENTS
B.H.	9/30/19	VILLAGE COMMENTS
B.H.	1/15/20	VILLAGE COMMENTS
B.H.	5/20/20	POND SETBACK REVISIONS

**LANDMARK**  
ENGINEERING LLC  
DESIGN FIRM REGISTRATION NO. 184-005577  
7808 WEST 103RD STREET  
PALOS HILLS, ILLINOIS 60465-1529  
Phone: (708) 599-5337  
Fax: (708) 599-2281



MEGAN NICOLE RIDGE SUBDIVISION  
132ND & 88TH AVENUE, ORLAND PARK, IL  
PRELIMINARY SITE PLAN

DRAWN BY: T.G.  
DESIGNED BY: B.H.  
CHECKED BY: M.L.

SHEET  
**PSP1**  
18-09-070