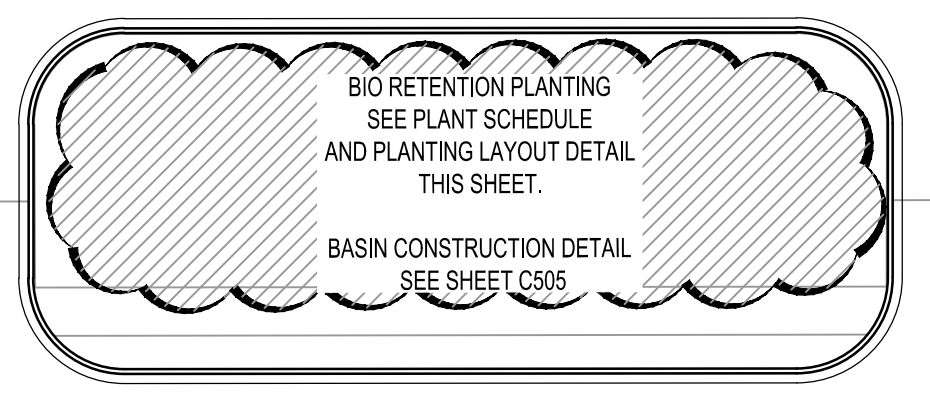
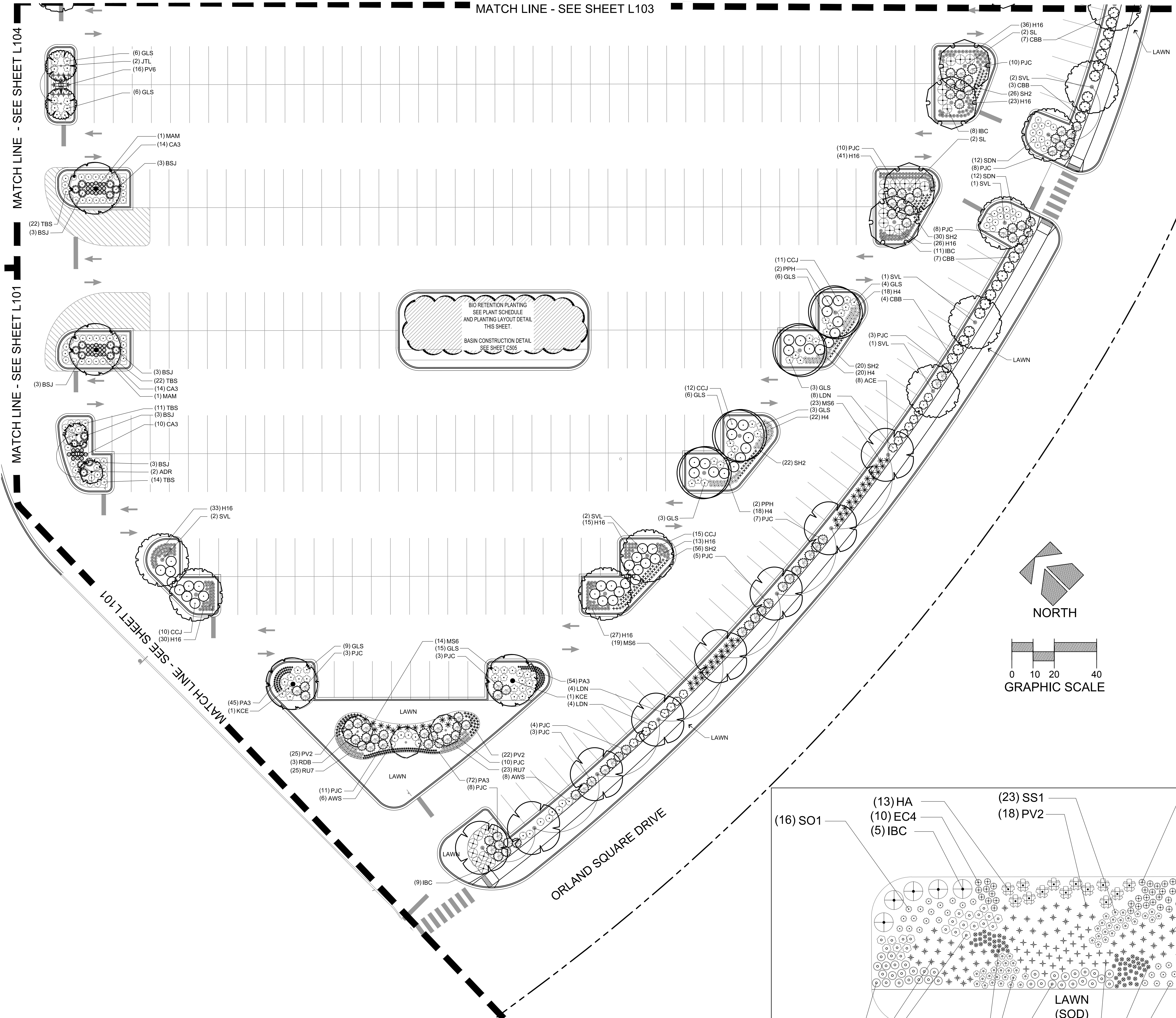


MATCH LINE - SEE SHEET L103

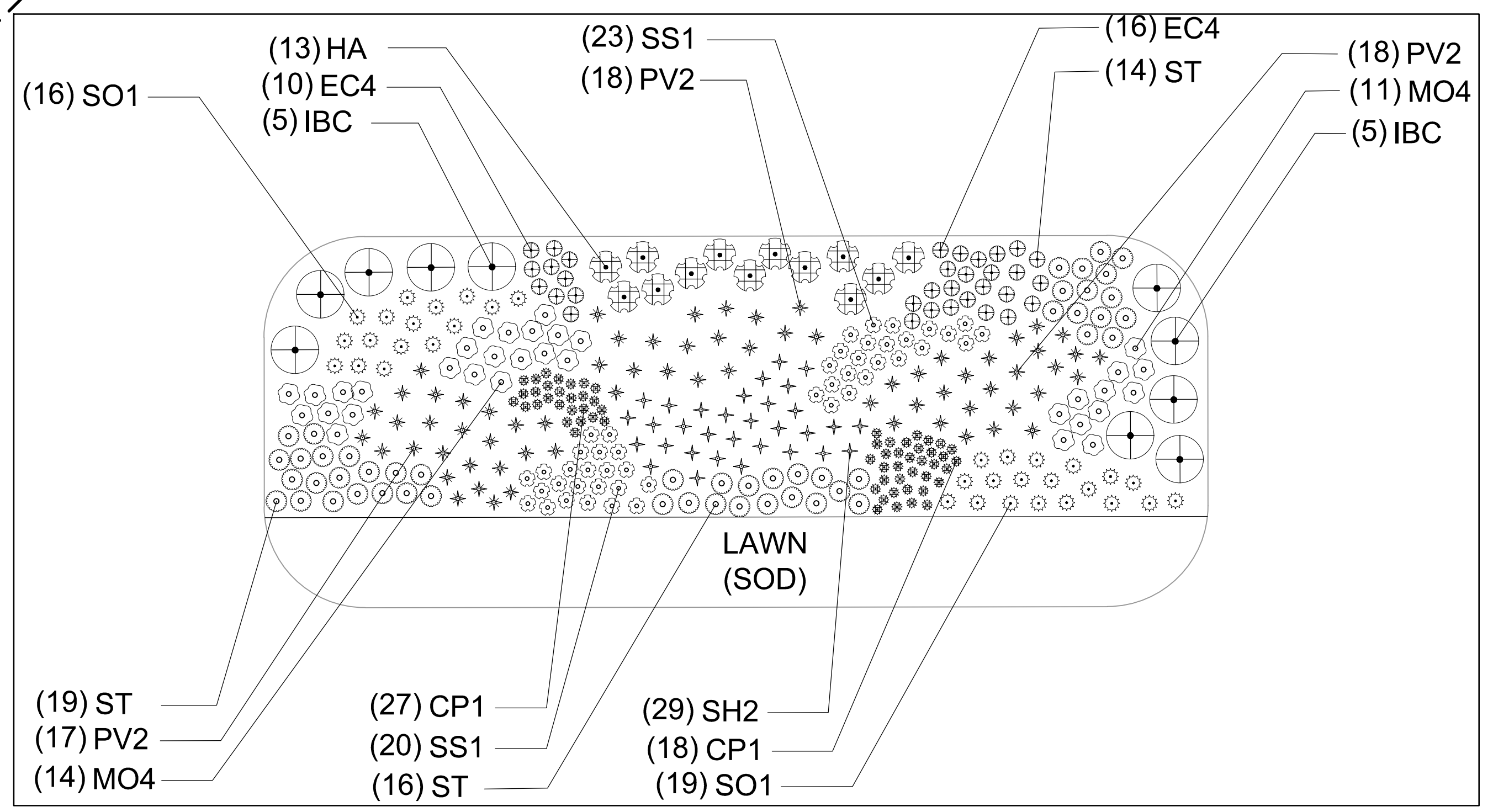
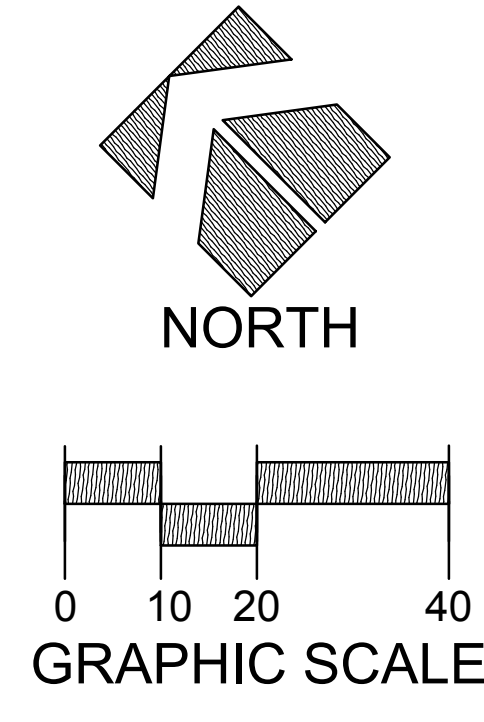


PLANT SCHEDULE SOUTH EAST

ORNA	QTY	BOTANICAL NAME	COMMON NAME	SIZE	ROOT	REMARKS
RDB	3	<i>Carica carandensis</i>	Eastern Redout	2' CAL	B&B	Full, matching head
ADR	2	<i>Malus x 'Adirondack'</i>	Adirondack Crab Apple	2' CAL	B&B	Full, matching head
JTL	2	<i>Syringa reticulata</i>	Ivory Silk Japanese Tree Lilac	2' CAL	B&B	Full, matching head
SHADE TREES	QTY	BOTANICAL NAME	COMMON NAME	SIZE	ROOT	REMARKS
MAM	2	<i>Acacia freemanii</i> 'Mama'	Mama Freeman's Wattle	2 1/2' CAL	B&B	Full, matching head
PPH	4	<i>Callis occidentalis</i> 'Prairie Pride'	Prairie Pride Hackberry	2 1/2' CAL	B&B	Full, matching head
SL	4	<i>Gleditsia triacanthos</i> 'Skyline'	Skyline Honey Locust	2 1/2' CAL	B&B	Full, matching head
KCE	2	<i>Gymnocladus dioica</i> 'Espresso'	Espresso Kentucky Coffeetree	2 1/2' CAL	B&B	Full, matching head
SVL	9	<i>Tilia tomentosa</i>	Silver Linden	2 1/2' CAL	B&B	Full, matching head
ACE	8	<i>Ulmus x 'Morton Accolade'</i> TM	'Accolade' Elm	2 1/2' CAL	B&B	Full, matching head
DECIDUOUS SHRUBS	QTY	BOTANICAL NAME	COMMON NAME	SIZE	ROOT	REMARKS
IBC	26	<i>Aronia melanocarpa</i>	Ironquios Beauty Black Chokeberry	18" HT	CONT.	
SDN	24	<i>Deutzia gracilis</i> 'Nikko'	Nikko Slender Deutzia	18" HT	CONT.	
CBB	21	<i>Euonymus alatus</i> 'Compactus'	Compact Burning Bush	24" HT	CONT.	
LDN	16	<i>Physocarpus opulifolius</i> 'Little Devil'	Little Devil Dwarf Ninebark	24" HT	CONT.	
GLS	61	<i>Rhus aromatica</i> 'Gro-Low'	Gro-Low Fragrant Sumac	18" HT	CONT.	
TBS	69	<i>Spiraea betulifolia</i> 'Tor'	Tor Birchleaf Spiraea	18" HT	CONT.	
AWS	14	<i>Spiraea x bumalda</i> 'Anthony Waterer'	Anthony Waterer Spiraea	18" HT	CONT.	
EVERGREEN SHRUBS	QTY	BOTANICAL NAME	COMMON NAME	SIZE	ROOT	REMARKS
PJC	93	<i>Juniperus chinensis</i> 'Kallays Compact'	Kallay Compact Pfitzer Juniper	18" HT	CONT.	
CCJ	48	<i>Juniperus sabinna</i> 'Calgary Carpet'	Calgary Carpet Juniper	18" HT	CONT.	
BSJ	18	<i>Juniperus squamata</i> 'Blue Star'	Blue Star Juniper	18" HT	CONT.	
ORNA GRASSES	QTY	BOTANICAL NAME	COMMON NAME	SIZE	ROOT	REMARKS
CA3	38	<i>Calamagrostis x acutiflora</i> 'Overdam'	Overdam Feather Reed Grass	1 GAL	POT	24" Spacing
MS6	56	<i>Miscanthus sinensis</i> 'Morning Light'	Morning Light Silver Grass	1 GAL	POT	30" Spacing
PV6	16	<i>Panicum virgatum</i> 'Apache Rose'	Apache Rose Switch Grass	1 GAL	POT	30" Spacing
PV2	47	<i>Panicum virgatum</i> 'Cheyenne Sky'	Cheyenne Sky Switch Grass	1 GAL	POT	18" Spacing
PA3	171	<i>Pennisetum alopecuroides</i> 'Little Bunny'	Little Bunny Fountain Grass	1 GAL	POT	12" Spacing
SH2	154	<i>Sporobolus heterolepis</i> 'Tara'	Tara Prairie Dropseed	1 GAL	POT	18" Spacing
PERENNIALS	QTY	BOTANICAL NAME	COMMON NAME	SIZE	ROOT	REMARKS
H4	76	<i>Hemerocallis x 'Happy Returns'</i>	Happy Returns Daylily	1 GAL	POT	
H16	244	<i>Hemerocallis x 'Pardon Me'</i>	Pardon Me Daylily	1 GAL	POT	
RU7	48	<i>Rubbeckia fulgida</i> var. <i>sulivanti</i> 'Little Goldstar'	Little Goldstar Black-eyed Susan	1 GAL	POT	

PLANT SCHEDULE BIO RETENTION CENTRAL

DECIDUOUS SHRUBS	QTY	COMMON NAME	BOTANICAL NAME	SIZE	ROOT	REMARKS
IBC	10	Aronia melanocarpa 'Morton'	<i>Aronia melanocarpa</i> 'Morton'	18" HT	CONT.	
HA	13	Ames St. Johns Wort	<i>Hypericum kalmianum</i> 'Ames'	18" HT	CONT.	
ORNA GRASSES	QTY	COMMON NAME	BOTANICAL NAME	SIZE	ROOT	REMARKS
CP1	62	Pennsylvania Sedge	<i>Carex pennsylvanica</i>	1 GAL	POT	12" Spacing
PV2	69	Cheyenne Sky Switch Grass	<i>Panicum virgatum</i> 'Cheyenne Sky'	1 GAL	POT	18" Spacing
SO1	46	Little Bluestem Grass	<i>Schizachyrium scoparium</i>	1 GAL	POT	18" Spacing
SH2	32	Tara Prairie Dropseed	<i>Sporobolus heterolepis</i> 'Tara'	1 GAL	POT	18" Spacing
PERENNIALS	QTY	COMMON NAME	BOTANICAL NAME	SIZE	ROOT	REMARKS
ST	49	Stiff Ticksell	<i>Conocarpus palmata</i>	1 GAL	POT	
EC4	33	Wild Berry Purple Coneflower	<i>Echinacea purpurea</i> 'Wild Berry'	1 GAL	POT	
MO4	35	Spotted Beebalm	<i>Monarda punctata</i>	1 GAL	POT	
SO1	33	Solar Cascade Goldenrod	<i>Solidago shortii</i> Solar Cascade	1 GAL	POT	



R.A. SMITH, INC. ASSUMES NO RESPONSIBILITY FOR DAMAGES, LIABILITY OR COSTS RESULTING FROM CHANGES OR ALTERATIONS MADE TO THIS PLAN WITHOUT THE EXPRESSED WRITTEN CONSENT OF R.A. SMITH, INC.

THE LOCATIONS OF EXISTING UTILITY INSTALLATIONS AS SHOWN ON THIS PLAN ARE APPROXIMATE. THERE MAY BE OTHER UNDERGROUND UTILITY INSTALLATIONS WITHIN THE PROJECT AREA THAT ARE NOT SHOWN.

DESCRIPTION

DATE



SITE CIVIL ENGINEER:
R.A. SMITH, INC.
16475 W. BLUEMOUND ROAD
SUITE 200
BROOKFIELD, WI 53005
PH: 262/781-1000

raSmith
CREATIVITY BEYOND ENGINEERING
rasmith.com

SERITAGE REDEVELOPMENT - ORLAND SQUARE
2 ORLAND SQUARE DRIVE
VILLAGE OF ORLAND PARK, ORLAND TOWNSHIP, COOK COUNTY, IL

LANDSCAPE PLAN
SOUTH EAST

© COPYRIGHT 2019
R.A. Smith, Inc.
DATE: 03-19-19
SCALE: 1" = 20'
JOB NO. 3170138
PROJECT MANAGER:
JEFFREY T. NANCE
DESIGNED BY: NJW/CNS
CHECKED BY: CNS
SHEET NUMBER
L102