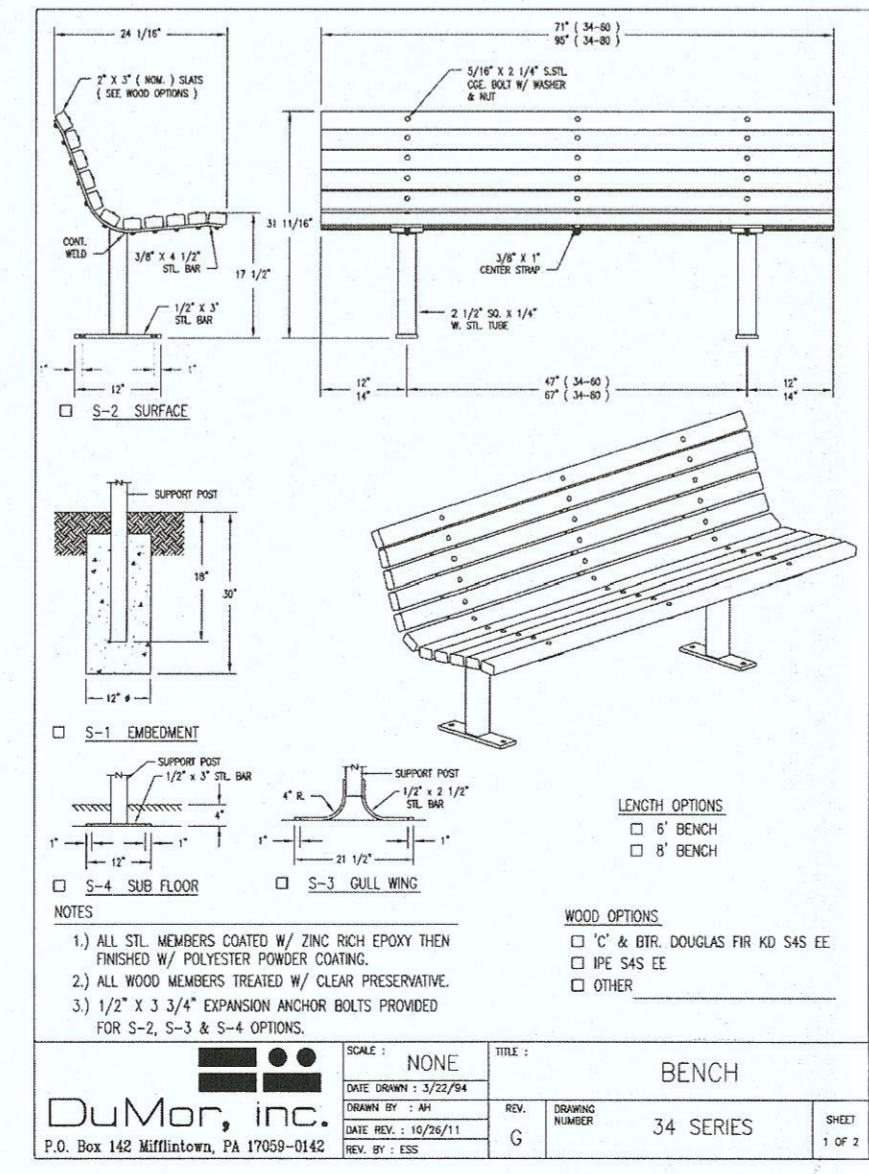


Detention Pond Landscape Plan

Scale:

Plant List

Key	Quantity	Name	COMMON/ Botanical	Size	Comments
ACRU	2	OCTOBER GLORY RED MAPLE/	Acer rubrum 'October Glory'	2.5" BB	
GLTR	1	SHADEMASTER HONEYLOCUST/	Gleditsia triacanthos 'Shademaster'	2.5" BB	
GLTR-4	2	SHADEMASTER HONEYLOCUST/	Gleditsia triacanthos 'Shademaster'	4" BB	
POTR-4	2	QUAKING ASPEN/	Populus tremuloides	4" BB	
QUBI	3	SWAMP WHITE OAK/	Quercus bicolor	2.5" BB	
TADI-4	19	COMMON BALDCYPRESS/	Taxodium distichum	4" BB	
TIAM-4	1	REDMOND AMERICAN LINDEN/	Tilia americana 'Redmond'	4" BB	
Ornamental Trees					
ALGL-4	6	BLACK ALDER/	Alnus glutinosa	4" BB	3 Stem Clump
BENI	4	RIVER BIRCH/	Betula nigra	10' BB	3 Stem Clump
BENI-4	3	RIVER BIRCH/	Betula nigra	4" BB	3 Stem Clump
Shrubs					
CORA	29	GRAY DOGWOOD/	Cornus racemosa	3'	
VIDE	20	ARROWWOOD	VIBURNUM Viburnum dentatum	3'	

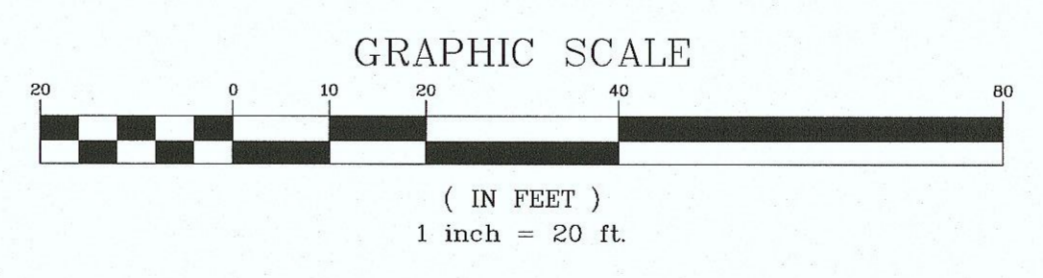


DuMor Bench 34 Detail or equal - N.T.S.



DuMor Bench 34 Photo Sample

1" = 20'-0"
NORTH



All mitigated trees are to be installed at 4" Caliper to partially meet the requirements of the 60 - 4" Caliper Trees required on the site due to tree removals.

The remaining 27 - 4" Caliper mitigated trees will be planted on future development sites, otherwise, a fee in lieu will be paid to the Village for any required mitigated trees not planted.

Cardno Stormwater Seed Mix

Note: The seed mix is a modified seed mix from the standard Stormwater Seed Mix. When ordering seed please inform Cardno that this is a modified seed mix.

Botanical Name	Common Name	Oz./Acre
PERMANENT GRASSES/SEDGES/RUSHES		
Carex cristatella	Crested Oval Sedge	3.69
Carex lurida	Bottlebrush Sedge	7.38
Carex vulpinoidea	Brown Fox Sedge	22.13
Elymus virginicus	Virginia Wild Rye	44.27
Glyceria striata	Fowl Manna Grass	4.61
Juncus effusus	Common Rush	3.69
Juncus torreyi	Torrey's Rush	0.92
Leersia oryzoides	Rice Cut Grass	3.69
Panicum virgatum	Switch Grass	29.51
Scirpus atrovirens	Dark Green Rush	3.69
Scirpus cyperinus	Wool Grass	1.84
Scirpus fluviatilis	River Bulrush	0.92
Scirpus validus	Great Bulrush	22.13
		148.47
TEMPORARY COVER		
Avena sativa	Common Oat	360.00
Lolium multiflorum	Annual Rye	100.00
		460.00
FORBS		
Alisma spp.	Water Plantain Mix	15.65
Asclepias incarnate	Swamp Milkweed	5.52
Bidens spp.	Bidens Mix	7.37
Helenium autumnale	Sneezeweed	7.37
Lycopus americanus	Common Water Horehound	0.92
Mimulus ringens	Monkey Flower	3.68
Penthorum sedoides	Ditch Stonecrop	1.84
Polygonum pennsylvanicum	Pinkweed	14.73
Rudbeckia subtomentosa	Sweet Black-Eyed Susan	3.68
Sagittaria latifolia	Common Arrowhead	3.68
Senna hebecarpa	Wild Senna	3.68
Thalictrum dasycarpum	Purple Meadow Rue	7.37
		75.49

Apply at 42.75 pounds per acre

LEGEND

- Turf Areas
- Cardno Economy Prairie Seed Mix
- Cardno Stormwater Seed Mix
- 4" Shredded Bark Mulch Provided in Planting Beds

(r) - Required Landscaping
(m) - Mitigation Tree Planting

60 - 4" Caliper Trees required based on Tree Removals
33 - 4" Caliper Mitigation Trees Provided on Plan

Cardno Economy Prairie Seed Mix

Note: The seed mix is a modified seed mix from the standard Economy Prairie Seed Mix. When ordering seed please inform Cardno that this is a modified seed mix.

Botanical Name	Common Name	Oz./Acre
PERMANENT GRASSES/SEDGES		
Andropogon gerardii	Big Bluestem	26.46
Bouteloua curtipendula	Side-Oats Grama	29.77
Carex spp.	Prairie Sedge Mix	1.65
Elymus Canadensis	Canada Wild Rye	26.46
Panicum virgatum	Switch Grass	4.14
Schizachyrium scoparium	Little Bluestem	39.70
Sorghastrum nutans	Indian Grass	29.77
		157.95
TEMPORARY COVER		
Avena sativa	Common Oat	360.00
Lolium multiflorum	Annual Rye	100.00
		460.00
FORBS		
Asclepias syriaca	Common Milkweed	0.83
Asclepias tuberosa	Butterfly Weed	1.65
Aster laevis	Smooth Blue Aster	0.41
Aster novae-angliae	New England Aster	1.24
Chamaecrista fasciculata	Partridge Pea	19.82
Coreopsis lanceolata	Sand Coreopsis	8.26
Echinacea purpurea	Broad-leaved Purple Coneflower	12.39
Heliopsis helianthoides	False Sunflower	0.41
Lupinus perennis	Wild Lupine	0.83
Monarda fistulosa	Wild Bergamot	0.41
Pycnanthemum virginianum	Common Mountain Mint	0.83
Ratibida pinnata	Yellow Coneflower	5.78
Rudbeckia hirta	Black-Eyed Susan	66.08

Apply at 42.75 PLS (Pure Live Seed) pounds per acre.

Required Landscaping

Stormwater Management Area
Length of High Water Line - 820 Feet

1 Tree per 100 feet of High Water Line 820' / 100' = (8.2) = 8 Trees

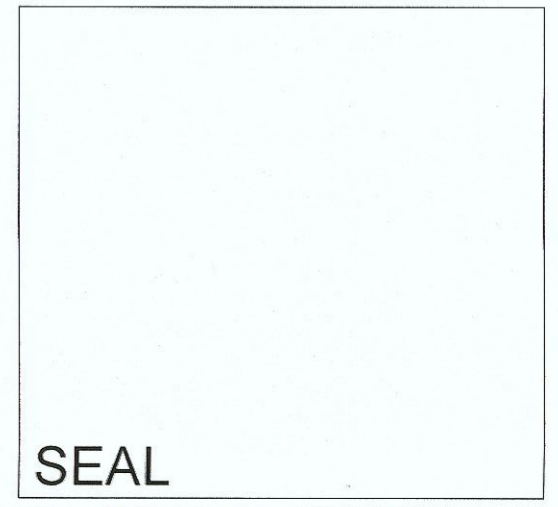
1 Native Understory Tree per 200 feet of High Water Line 820' / 200' = (4.1) = 4 Understory Trees

3 Native Shrubs per 50 feet of High Water Line 820' / 50' = (16.4) x 3 = (49.2) = 49 Shrubs

BOARD APPROVED

Case No: 2016-0595
Date: 07/17/2017
W/Conditions:
W/Out Conditions: X

VILLAGE OF ORLAND PARK



DATE	REVISIONS
5-24-17	REVISED PER VILLAGE COMMENTS
9-20-16	REVISED PER SITE PLAN ADJUSTMENTS
8-12-16	REVISED PER DETENTION BASIN
6-7-16	REVISED PER DETENTION BASIN
4-1-16	REVISED PER VILLAGE COMMENTS

Manhard CONSULTING LTD.
900 Windlands Parkway, Vernon Hills, IL 60061
Tel: 847.634.0095 Fax: 847.634.0099
www.manhard.com
Civil Engineers • Surveyors • Water Resource Engineers • Water & Wastewater Engineers
Construction Managers • Environmental Scientists • Landscape Architects • Planners

HEARTIS ORLAND PARK - SENIOR LIVING
ORLAND PARK, ILLINOIS
FINAL LANDSCAPE PLANS

PROJ. MGR.: JC
PROJ. ASSOC.: GMC1
DRAWN BY: JBD
DATE: 3-10-16
SCALE: 1"=20'
SHEET
L2 OF L4
CADPIL01