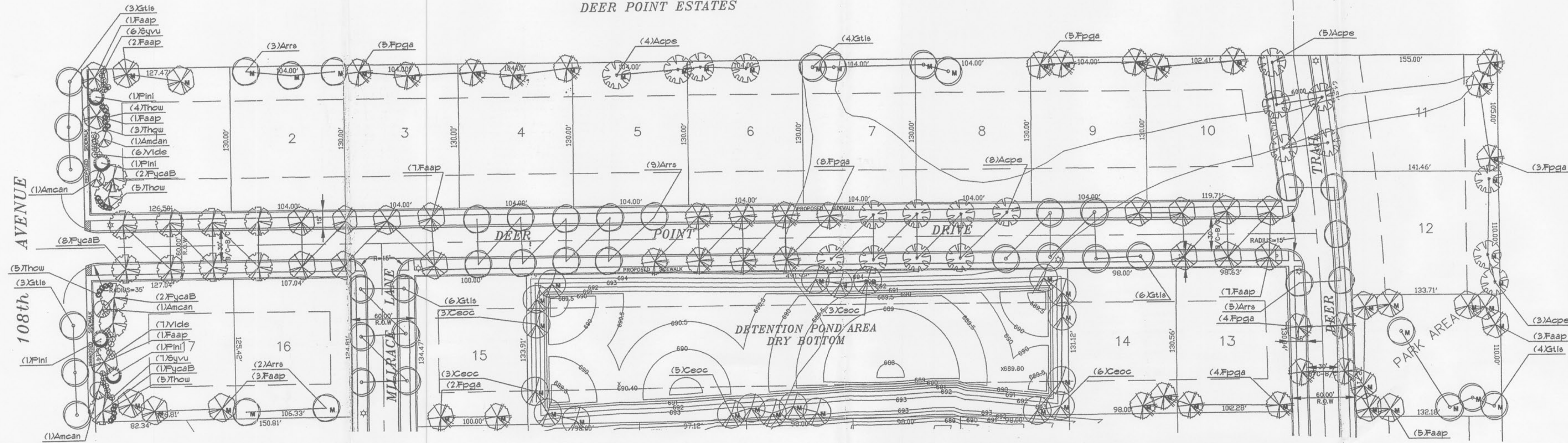
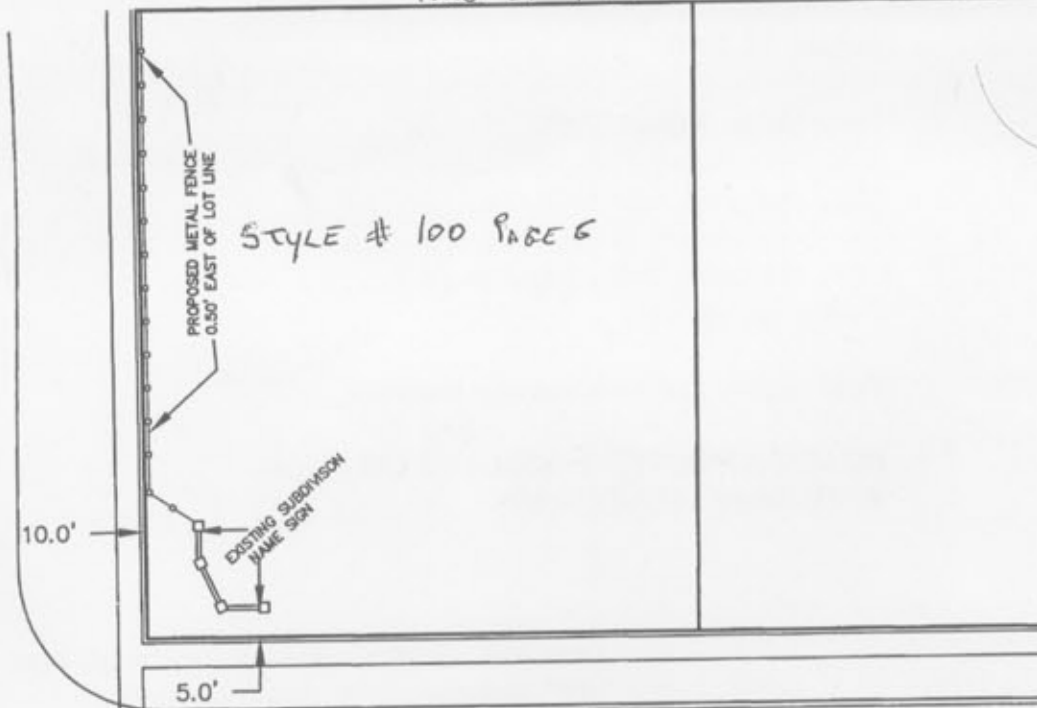


DEER POINT ESTATES



PROPOSED METAL FENCE
AUG 22, 2007



Jerith America's Fencing Choice™

A Fence to Fit Every Need

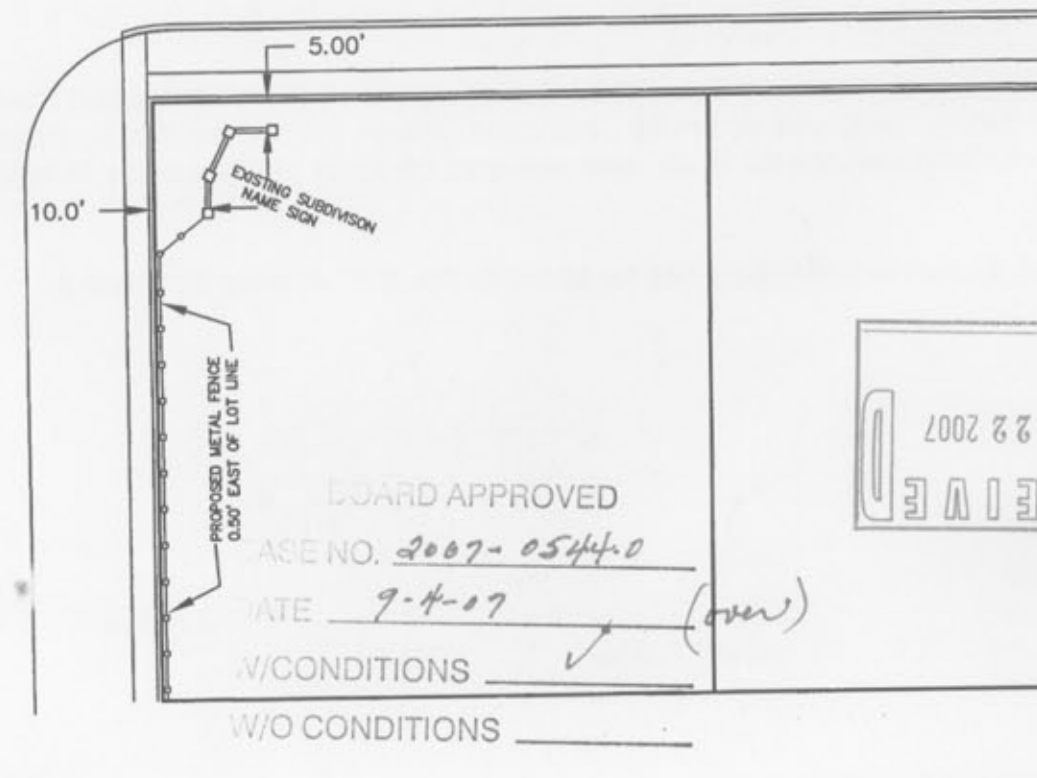
There are a wide variety of Jerith fence styles available in three colors and several heights. You can be sure that there will be a Jerith fence to enhance the beauty of your home, pool or yard.

Residential Fence Styles:
 #101 This traditional wrought iron design has its points even across the top.
 #100 Similar to Style #101, but with staggered picket tops.

AVENUE

108th

OLDE MILL DVE



Plant List (108th Street Buffer Plants Only)

Code Name	Scientific Name	Common Name	Size	Quantity
Amcan	Amelanchier canadensis	Shadblow serviceberry	6' Ht.	4
Faap	Fraxinus americana 'Autumn Purple'	Autumn Purple White Ash	2.5'-Cal	3
Pini	Pinus nigra	Austrian pine	6' Ht.	4
FycaB	Pyrus calleryana 'Bradford'	Bradford callery pear	2.5'-Cal	5
Syvu	Syringa vulgaris	Common lilac	36' Ht.	13
Thow	Thuja occidentalis 'Woodwardii'	Woodward Arborvitae	36' Ht.	22
Vide	Viburnum dentatum	Arrowwood viburnum	36' Ht.	13

Plant List (Complete)

Code Name	Scientific Name	Common Name	Size	Quantity
Acpe	Acer platanoides 'Emerald Queen'	Emerald Queen Maple	2.5'-Cal	20
Amcan	Amelanchier canadensis	Shadblow serviceberry	6' Ht.	4
Arre	Acer rubrum 'Red Sunset'	Sunset Maple	2.5'-Cal	19
Ceoc	Celtis occidentalis	Common hackberry	2.5'-Cal	20
Faap	Fraxinus americana 'Autumn Purple'	Autumn Purple White Ash	2.5'-Cal	30
Fpga	Fraxinus pennsylvanica 'Patmore Ash'	Patmore Green Ash	2.5'-Cal	31
Gtis	Gleditsia triacanthos inermis 'Skyline'	Skyline Honeylocust	2.5'-Cal	26
Pini	Pinus nigra	Austrian pine	6' Ht.	4
FycaB	Pyrus calleryana 'Bradford'	Bradford callery pear	2.5'-Cal	13
Syvu	Syringa vulgaris	Common lilac	36' Ht.	13
Thow	Thuja occidentalis 'Woodwardii'	Woodward Arborvitae	36' Ht.	22
Vide	Viburnum dentatum	Arrowwood viburnum	36' Ht.	13

Plant List (Mitigated Trees Only)

Code Name	Scientific Name	Common Name	Size	Quantity
Acpe	Acer platanoides 'Emerald Queen'	Emerald Queen Maple	2.5'-Cal	7
Arre	Acer rubrum 'Red Sunset'	Sunset Maple	2.5'-Cal	5
Ceoc	Celtis occidentalis	Common hackberry	2.5'-Cal	20
Faap	Fraxinus americana 'Autumn Purple'	Autumn Purple White Ash	2.5'-Cal	13
Fpga	Fraxinus pennsylvanica 'Patmore Ash'	Patmore Green Ash	2.5'-Cal	19

- LANDSCAPE NOTES**
- REFER TO PLAT OF SURVEY FOR LEGAL DESCRIPTION, BOUNDARY DIMENSIONS AND EXISTING CONDITIONS.
 - REFER TO ARCHITECTURAL PLANS FOR BUILDING MIX, SIZE AND FOOTPRINT.
 - REFER TO ENGINEERING PLANS FOR DETENTION CALCULATIONS, UTILITY LOCATIONS, TOPOGRAPHIC INFORMATION AND THE LIKE.
 - PRELIMINARY LANDSCAPE PLAN ALL AREAS AND DIMENSIONS ARE APPROXIMATE.
 - ALL PLANT MATERIAL ON THIS PLANTING PLAN REPRESENTS THE INTENTION AND INTENSITY OF THE PROPOSED LANDSCAPE MATERIAL. THE EXACT SPECIES AND LOCATIONS MAY VARY IN THE FIELD DO TO MODIFICATIONS IN THE SITE IMPROVEMENTS AND THE AVAILABILITY OF PLANT MATERIAL AT THE TIME OF INSTALLATION. ANY SUCH CHANGES MUST FIRST BE APPROVED BY THE VILLAGE IN WRITING.
 - ALL PLANT MATERIAL SHALL BE PLANTED WITH A MINIMUM OF SIX INCHES OF ORGANIC SOIL AND MULCHED WITH A SHREDDED BARK MATERIAL TO A MINIMUM 3" DEPTH.
 - ALL LAWN AREAS ON THIS PLAN SHALL BE SEED.
 - THIS LANDSCAPE PLAN ASSUMES THE SITE WILL BE PREPARED WITH TOP SOIL SUITABLE FOR THE ESTABLISHMENT OF THE LANDSCAPE MATERIAL PRESENTED ON THIS PLAN. IF ADDITIONAL TOP SOIL IS REQUIRED IT IS UP TO THE LANDSCAPE CONTRACTOR ON THE PROJECT TO PROVIDE, SPREAD AND PREPARE THE SITE AS NEEDED FOR THE IMPLEMENTATION OF THIS LANDSCAPE PLAN.
 - ALL PLANT MATERIALS SHALL CONFORM TO THE LATEST EDITION OF THE AMERICAN STANDARDS FOR NURSERY STOCK AS PUBLISHED BY THE AMERICAN ASSOCIATION OF NURSERYMEN, INC. 230 SOUTHERN BUILDING, WASHINGTON DC 20005 (ANSI Z60.1)

John Foraker Cell 630-301-1310