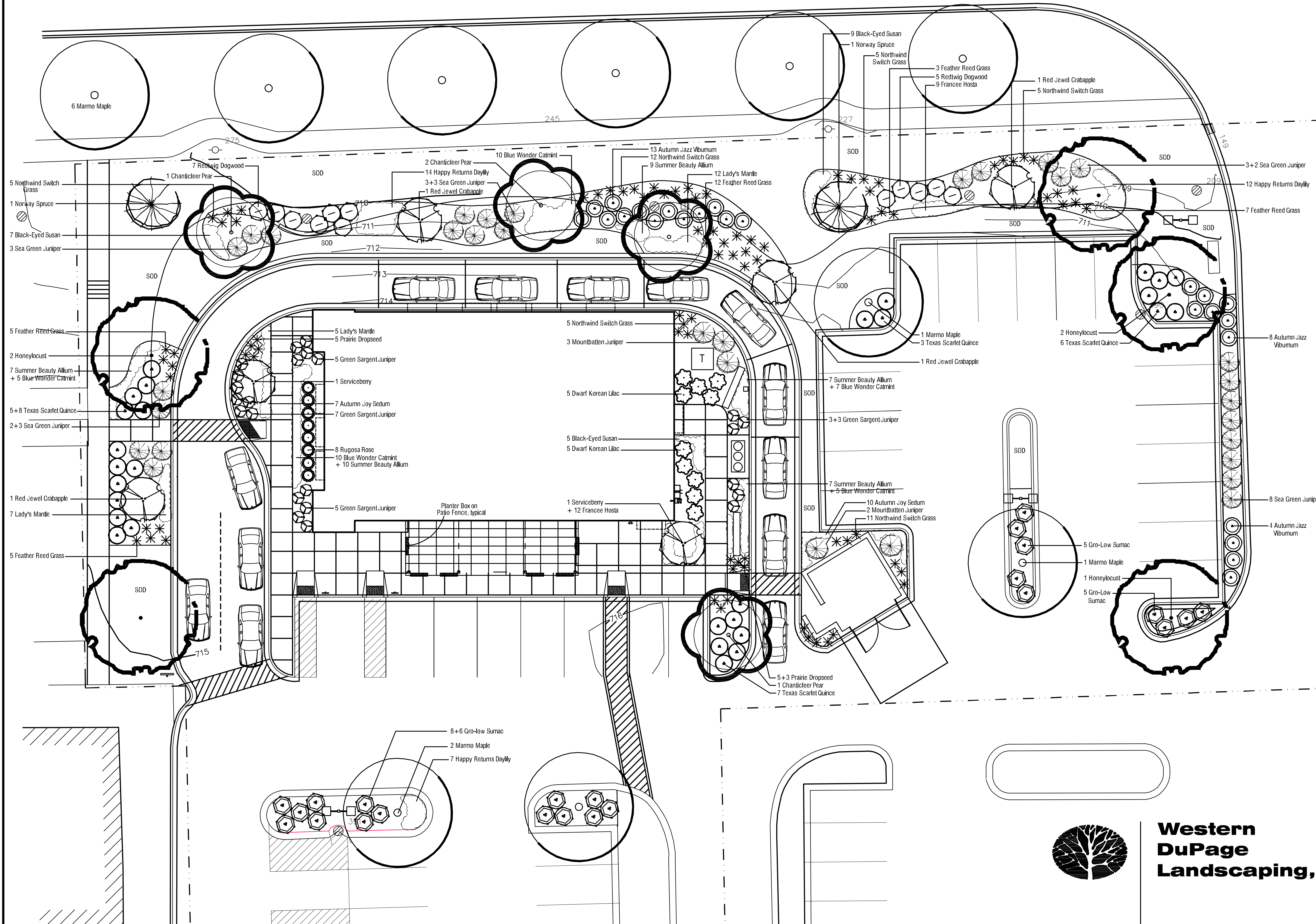


131st STREET



BOARD APPROVED

Case No: 2011-0260
Date: 8/6/2012
W/Conditions:
W/Out Conditions: x

VILLAGE OF ORLAND PARK

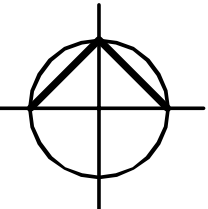
Landscape Development Plan

BUONA RESTAURANT

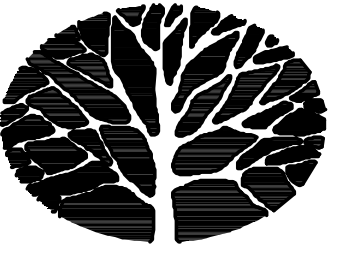
Southmoor Commons Lot 4
Orland Park

sheet: 1 of 2
date: 20 April 2012
project no.:

drawn:
checked:
scale: 1" = 100'

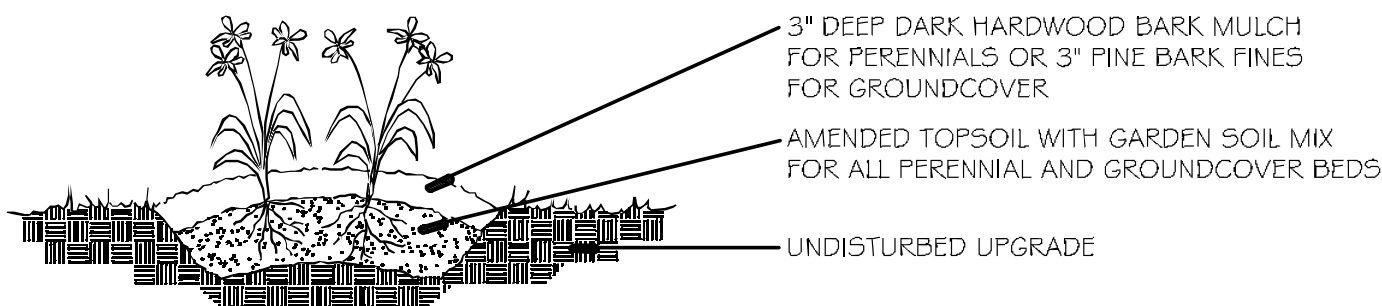
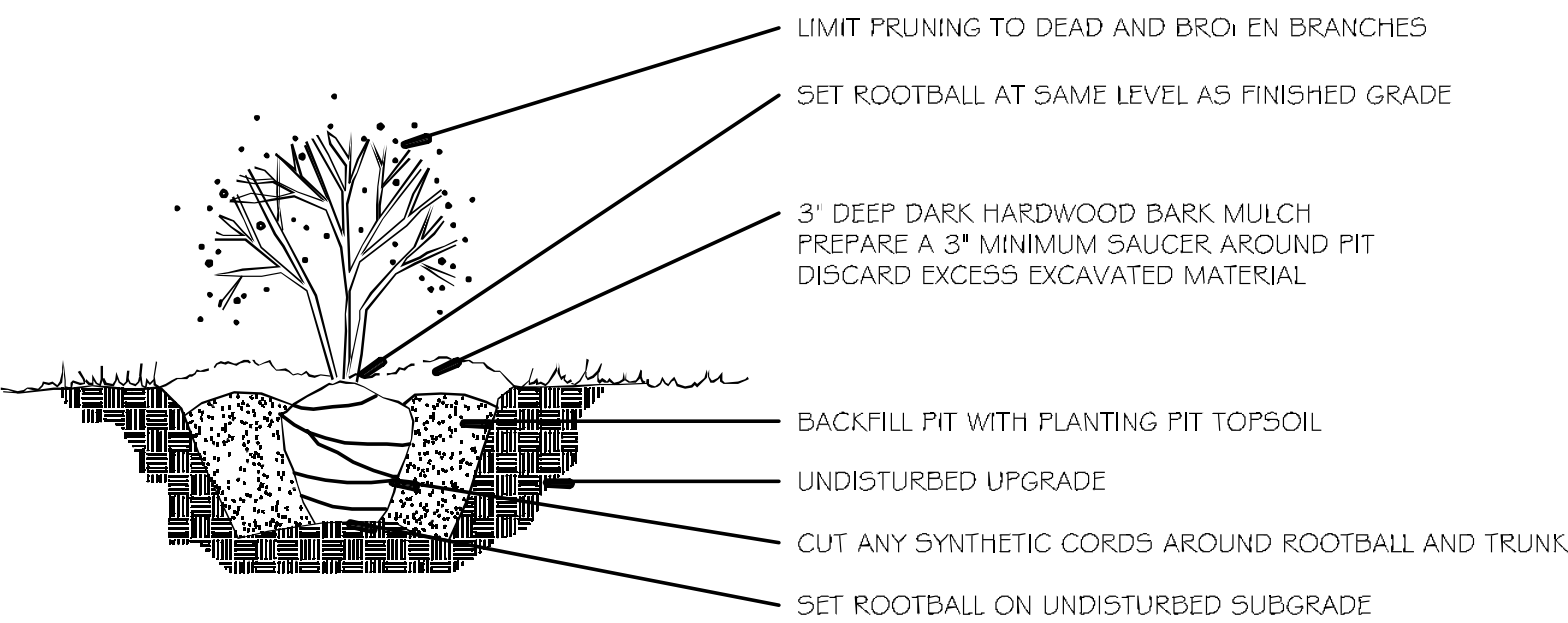
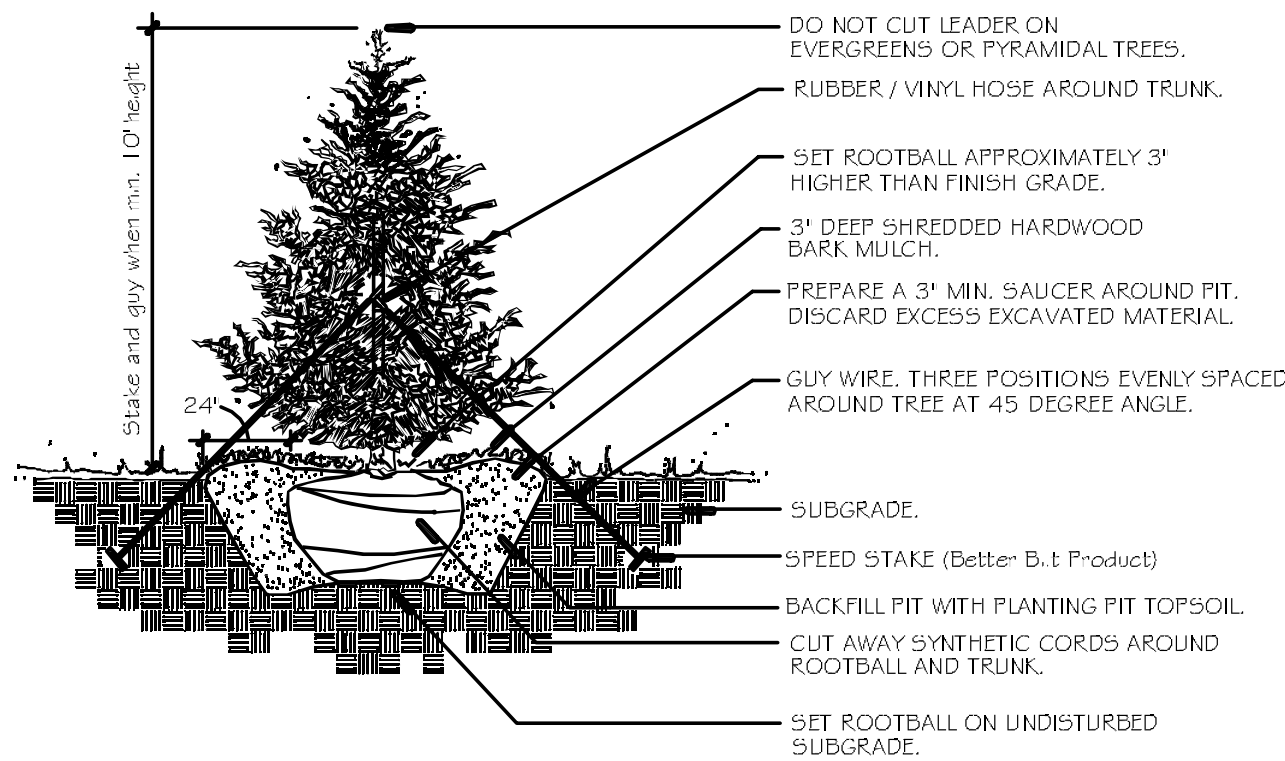
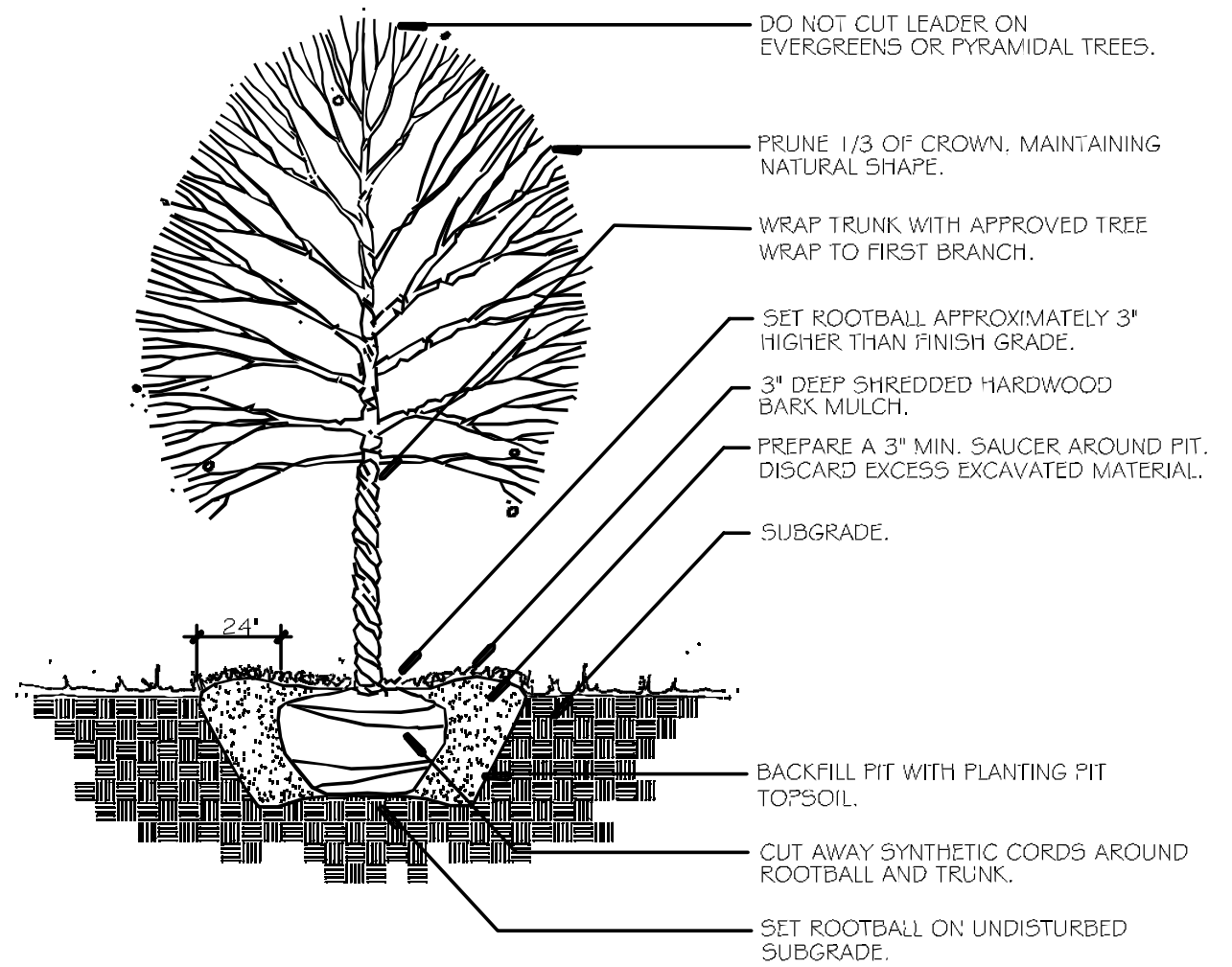


north:



Western
DuPage
Landscaping, Inc.

per comments
27 July 2012
per Village comments
14 June 2012
revisions:



QTY	LATIN NAME	COMMON NAME
Shade & Ornamental Trees		
10	ACER X FREEMANII 'MARMO'	MARMO MAPLE, 2.5"
5	GLEDITSIA TRICANTHOS VER. INERMIS	THORNLESS HONEYLOCUST, 2.5"
4	PYRUS CALLER YANA 'CHANTICLEER'	CHANTICLEER FLOWERING PEAR, 2.5"
4	MALUS 'RED JEWEL'	RED JEWEL CRABAPPLE, 6"
2	AMELANCHIER X GRANDIFLORA 'AUTUMN BRILLIANCE'	AUTUMN BRILLIANCE SERVICEBERRY, 6"
Evergreen Trees & Shrubs		
5	JUNIPERUS 'MOUNTBATTEN'	MOUNTBATTEN JUNIPER, 5'
23	JUNIPERUS CHINENSIS 'GREEN SARGENT'	GREEN SARGENT JUNIPER, 5 GAL
27	JUNIPERUS CHINENSIS 'SEA GREEN'	SEA GREEN JUNIPER, 5 GAL
2	PICEA ABIES	NORWAY SPRUCE, 6'
Deciduous Shrubs		
25	VIBURNUM DENTATUM 'AUTUMN JAZZ'	AUTUMN JAZZ VIBURNUM, 36"
23	CHAENOMELES SPECIOSA 'TEXAS SCARLET'	TEXAS SCARLET QUINCE, 5 GAL
12	CORNUS SERICEA 'BAILEY'	RED TWIG DOGWOOD, 36"
24	RHUS AROMATICA 'GRO-LOW'	GRO-LOW FRAGRANT SUMAC, 5 GAL
8	ROSA RUGOSA	RUGOSA ROSE, 3 GAL
10	SYRINGA MEYERI 'PALIBIN'	DWARF KOREAN LILAC, 30"
Ornamental Grass & Perennials		
43	PANICUM VIRGATUM 'NORTHWIND'	NORTHWIND SWITCH GRASS, 1 GAL
32	CALAMAGROSTIS X ACUTIFLORA 'KARL FOERSTER'	FEATHER REED GRASS, 1 GAL
13	SPOROBOLUS HETEROLEPIS	PRAIRIE DROP SEED, 1 GAL
37	NEPETA X FAASSENII 'BLUE WONDER'	BLUE WONDER CATMINT, 1 GAL
40	ALLIUM TANGUTICUM 'SUMMER BEAUTY'	SUMMER BEAUTY ALLIUM, 1 GAL
17	SEDUM SPECTABILE 'AUTUMN JOY'	AUTUMN JOY SEDUM, 1 GAL
24	ALCHEMILLA VULGARIS	LADY'S MANTLE, 1 GAL
21	RUDBECKIA SPECIOSA 'VIETTE'S LITTLE SUZY'	LITTLE SUZY BLACK-EYED-SUSAN, 1 GAL
21	HOSTA 'FRANCEE'	FRANCEE HOSTA, 1 GAL
33	HEMEROCALLIS 'HAPPY RETURNS'	HAPPY RETURNS DAYLILY, 1 GAL

- * All plant material shall be nursery grown stock and shall be free of any deformities, diseases or insect damage. Any materials with damaged or crooked/disfigured leaders, bark abrasion, sunscald, insect damage, etc. are not acceptable and will be rejected.
- * All plant material shall be inspected and approved by the landscape architect prior to installation. Any materials installed without approval may be rejected.
- * Trees not exhibiting a central (or single) leader will be rejected unless called out in the Plant Schedule of multi-stem.
- * Plant quantities shown in the Plant Schedule are for convenience only. The contractor is responsible for providing and installing all materials shown on the plan and should not rely on the Plant Schedule of determining quantities.
- * Plant materials in buffer areas shall be maintained in natural forms in a healthy and viable manner by the property Owner, and shall be replaced by the property Owner as necessary to comply with the approved design and the intent of the buffer.
- * All turf existing except for noted. Repair damage from construction activities.
- * Mulch all trees and shrub plantings with a minimum of 3" premium bark mulch.
- * Prepare perennial beds with 1 CY. Garden Compost per 100 SF. Rototilled to 8" depth.
- * Adjust plant locations in field to maintain appropriate spacing from fire hydrants, light poles, all utility structures, driveways and sidewalks.
- * Landscape Contractor shall verify locations of all under ground utilities prior to digging and field adjust plant locations to avoid the same. Contact J.U.L.I.E. (1-800-892-0123) 72 hours prior to digging.
- * Plant material sizing and ball sizes shall conform to the "American Standards" for "Nursery Stock" (latest edition) by the American Association of Nurseryman, Inc.
- * Quantity lists are supplied as a convenience. Contractor shall verify all quantities and in case of discrepancy, the plan shall prevail.
- * New plantings shall be warranted for one year from the date of original installation as to workmanship and materials. Plants must have received adequate care and water and all plantings not damaged as a result of theft, fire, vandalism, negligence, mechanical damage or an act of God for the warranty to remain valid.
- * Guy all evergreens 10' height and over. See detail.

BOARD APPROVED

Case No: _____
Date: _____
W/Conditions: _____
W/Out Conditions: _____

VILLAGE OF ORLAND PARK

Planting List & Details

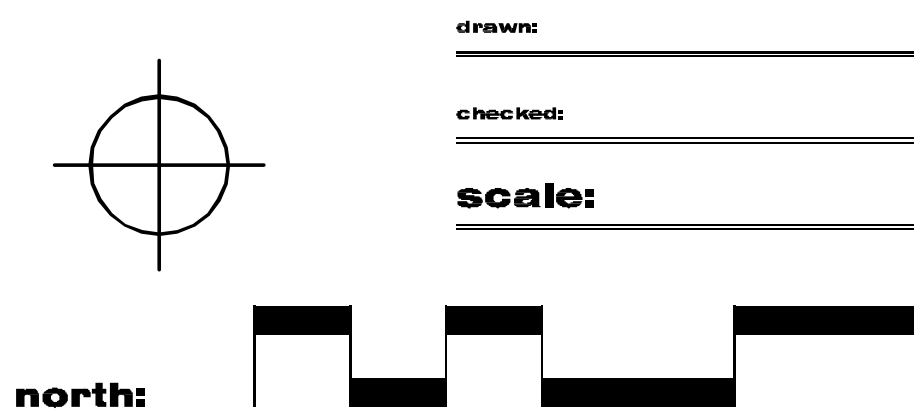
BUONA RESTAURANT

Southmoor Commons Lot 4 Orland Park

sheet: **2 of 2**

date: **20 April 2012**

project no.:



drawn:	
checked:	
scale:	
per comments	
27 July 2012	per Village comments
14 June 2012	

revisions:



**Western
DuPage
Landscaping, Inc.**