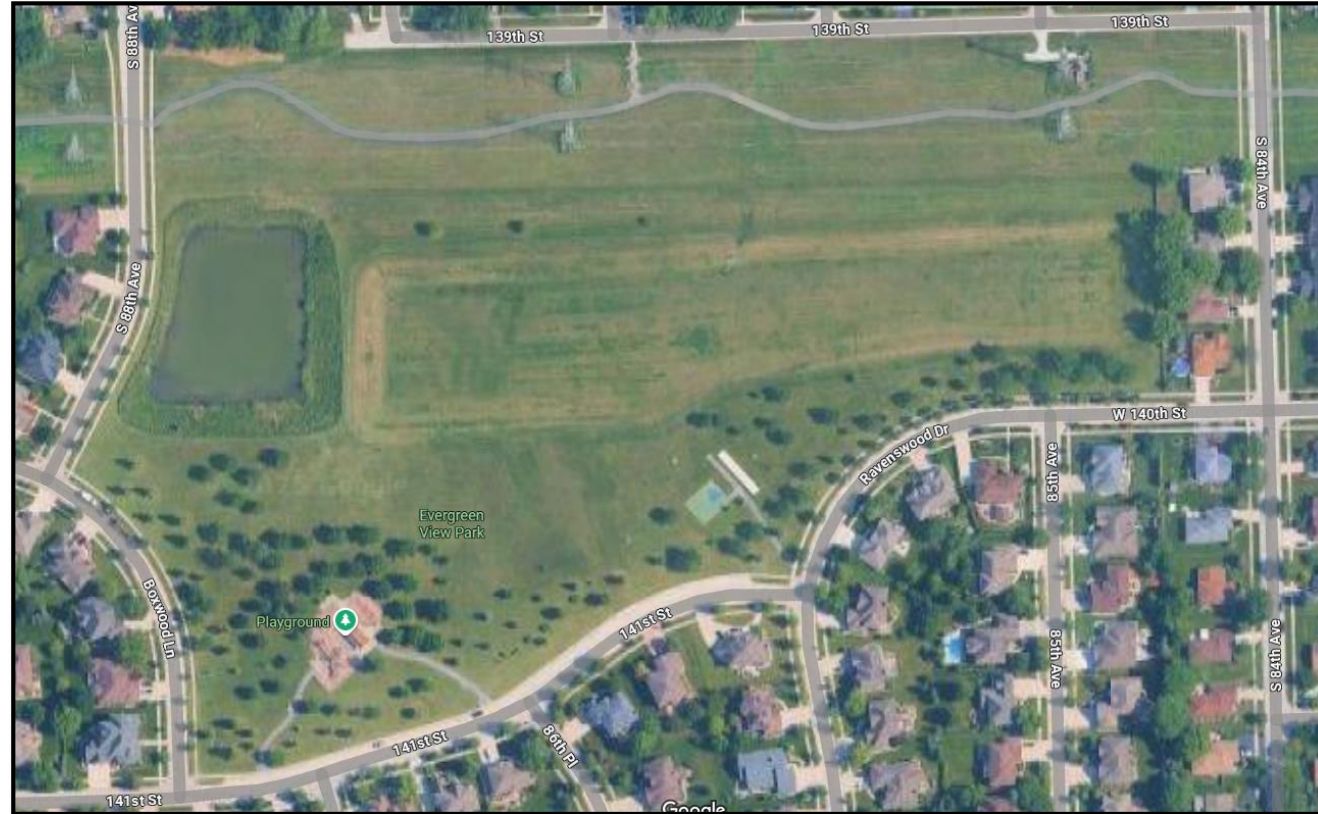


EVERGREEN VIEW PARK CONCEPTUAL PLAN



EVERGREEN VIEW PARK

Current State



PLAYGROUND AND PAVILION REPLACEMENT SCHEDULED FOR 2026

EVERGREEN VIEW PARK

Open Space Land Acquisition and Development (OSLAD) Grant

- RELEASED ON JULY 15, 2025
- \$600,000 REIMBURSABLE, MATCHING GRANT
- APPLICATIONS DUE SEPTEMBER 30, 2025
- GRANT RESOLUTION OF AUTHORIZATION
- ACKNOWLEDGES THE VILLAGES HAS SUFFICIENT FUNDS TO COMPLETE THE PENDING OSLAD PROJECT WITHIN THE SPECIFIED GRANT TIMEFRAME COMPLYING WITH ALL TERMS, CONDITIONS AND REGULATIONS AS SPECIFIED IN THE RESOLUTION OF AUTHORIZATION.

EVERGREEN VIEW PARK

Conceptual Plan Process

TWO PUBLIC INPUT MEETINGS

- 908 POSTCARDS MAILED TO RESIDENTS WITHIN 1,500-FOOT RADIUS OF THE PARK
- THREE SOCIAL MEDIA POSTS
- TWO SIGNS PLACED AT THE PARK
- AUGUST 25 (AT EVERGREEN VIEW PARK): 54 PARTICIPANTS
- AUGUST 28 (AT CIVIC CENTER): 9 PARTICIPANTS



EVERGREEN VIEW PARK

Conceptual Plan Process

COMMUNITY SURVEY

- SURVEY QR CODE INCLUDED ON ALL POSTCARDS
- SURVEY LINK ON SOCIAL MEDIA POSTS
- NINETY-EIGHT TOTAL RESPONSES

EVERGREEN VIEW PARK

COMMUNITY ENGAGEMENT MEETING

MON., AUG. 25
6 P.M.

Evergreen View Park*
8610 141st Street

THURS., AUG. 28
6 P.M.

Orland Park Civic Center
14750 Ravinia Ave

**Rain location:
Orland Park Civic Center
14750 Ravinia Ave*



*Can't attend a meeting?
Share your input by taking
the survey. Just scan the QR
code to get started.*



ORLAND PARK

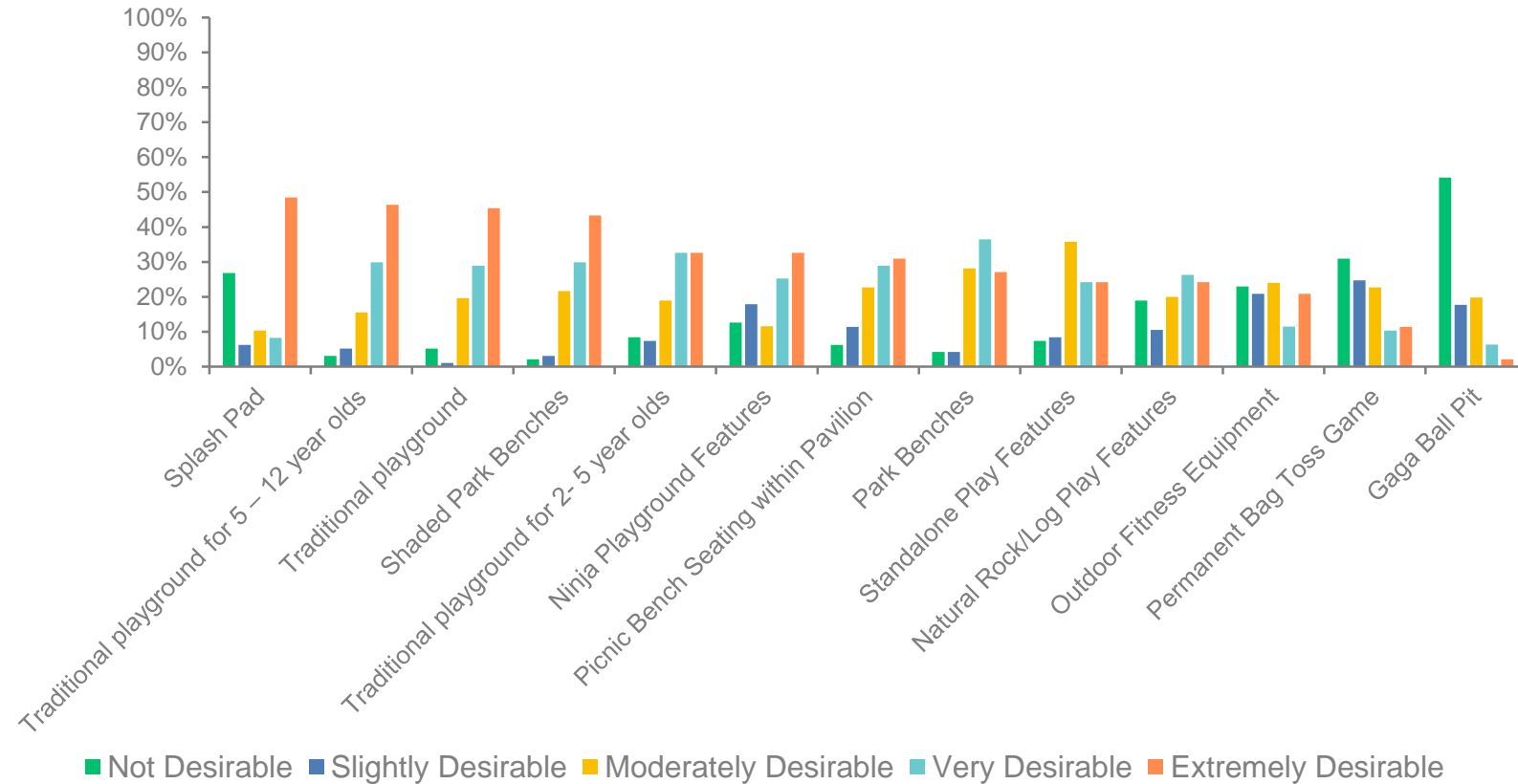
EVERGREEN VIEW PARK

Public Input Meetings Outcomes

- PLAYGROUND NEEDS REPLACEMENT AND WOULD BE VERY MUCH WELCOMED
- MULTI-GENERATIONAL PARK NEEDS TO MEET THE NEEDS OF A DIVERSE NEIGHBORHOOD
- PICKLEBALL WAS A VERY POPULAR SUGGESTION
- SPLASH PAD IS POLARIZING, BUT IF DONE SUBTLY, TO MATCH THE NEIGHBORHOOD, WOULD BE ACCEPTABLE
- DOGS AND GOLF WERE UNEXPECTEDLY POPULAR AT THE PARK

EVERGREEN VIEW PARK

Survey Responses: What additional features would you like to see in Evergreen View Park?



EVERGREEN VIEW PARK

Open Ended Response: What features would you like to see in Evergreen View Park?

STRONG SUPPORT / FREQUENTLY REQUESTED AMENITIES

PICKLEBALL COURTS – THE SINGLE MOST REPEATED REQUEST, STRONGLY POSITIVE.

WALKING/RUNNING LOOP – MULTIPLE MENTIONS, BROAD POSITIVE SENTIMENT.

DOG PARK – SEVERAL RESIDENTS REQUESTED DOG-SPECIFIC AREAS, THOUGH ONE NOTED OPPOSITION.

SHADE AND POLLINATOR LANDSCAPING – RECURRING INTEREST IN SHADED SEATING AND POLLINATOR AREAS.

SPLASH PAD – SOME FAMILIES VIEW IT AS “NUMBER ONE PRIORITY,” WHILE SEVERAL NEARBY RESIDENTS STRONGLY OPPOSED IT DUE TO TRAFFIC, PARKING, AND OUTSIDER CONCERNS.



CONCEPT PLAN

EVERGREEN VIEW PARK



LEGEND

- A PLAY AREA - AGE 5-12
- B PLAY AREA - AGE 2-5
- C PLAY AREA - EXISTING SWINGS
- D EXISTING RETAINING WALL SEAT
- E EXISTING PAVILION
- F MEMORIAL BENCH
- G POLLINATOR GARDEN
- H PLAZA WITH TRELLIS
- I SPRAY AREA - AGE 2-5
- J SPRAY AREA - AGE 5-12
- L SHADE STRUCTURE
- M GAGA PIT
- N BOCCE BALL COURT
- O BAG TOSS
- P EXISTING BASKETBALL COURT



EVERGREEN VIEW PARK

Splash Pad Design Concepts and Ideas

- NATIONAL RECREATION AND PARK ASSOCIATION (NRPA) BENCHMARK FOR COMMUNITIES WITH A POPULATION BETWEEN 50,000 AND 99,999, THE AVERAGE NUMBER OF RESIDENTS PER SPLASH PAD IS 54,100.
- DESIGN A SMALLER SPLASH PAD.
- USE GROUND-LEVEL JETS ONLY, AVOIDING TALL OR COLORFUL STRUCTURES.
- BLEND WITH PARK CHARACTER THROUGH EARTH-TONE PAVING AND DECORATIVE CONCRETE.
- INTEGRATE WITH NATURAL ELEMENTS (STONE, BOULDERS, OR LOGS) TO MIMIC SPRINGS.
- USE OF AN ACTIVATION BOLLARD
- OPERATE SEASONALLY AND DURING DAYTIME HOURS TO REDUCE NOISE AND LATE-NIGHT USE.



EVERGREEN VIEW PARK

Splash Pad Design Concepts and Ideas



EVERGREEN VIEW PARK

Next Steps

- Conceptual plan reflects a balance of resident feedback, survey responses, and site analysis.
- Priorities identified: playground and pavilion replacement (2026), shaded seating, splash pad, pickleball courts, and putting green.
- Not all priorities can be fully realized, but all will be considered in the design process.
- Example: A dedicated dog park may not be feasible but dog-friendly features such as clean-up stations and pet water fountains can be incorporated to enhance usability.
- A subtle splash pad concept is proposed to bridge differing community preferences.
- Plan aligns with eligibility for OSLAD grant funding.

EVERGREEN VIEW PARK

Discussion

- Staff seek input and direction on the conceptual plan to incorporate into the OSLAD grant application.