

DATE	DESCRIPTION
XXXX.2017	ISSUE FOR PERMIT
XXXX.2017	ISSUE FOR BID
XXXX.2017	ISSUE FOR CONSTRUCTION

DATE	DESCRIPTION
8-25-17	PRELIMINARY SUBMITTAL COMMENTS

**SITE  
DIMENSION  
PLAN**

**C1**

**TRAFFIC CONTROL & SIGNAGE**

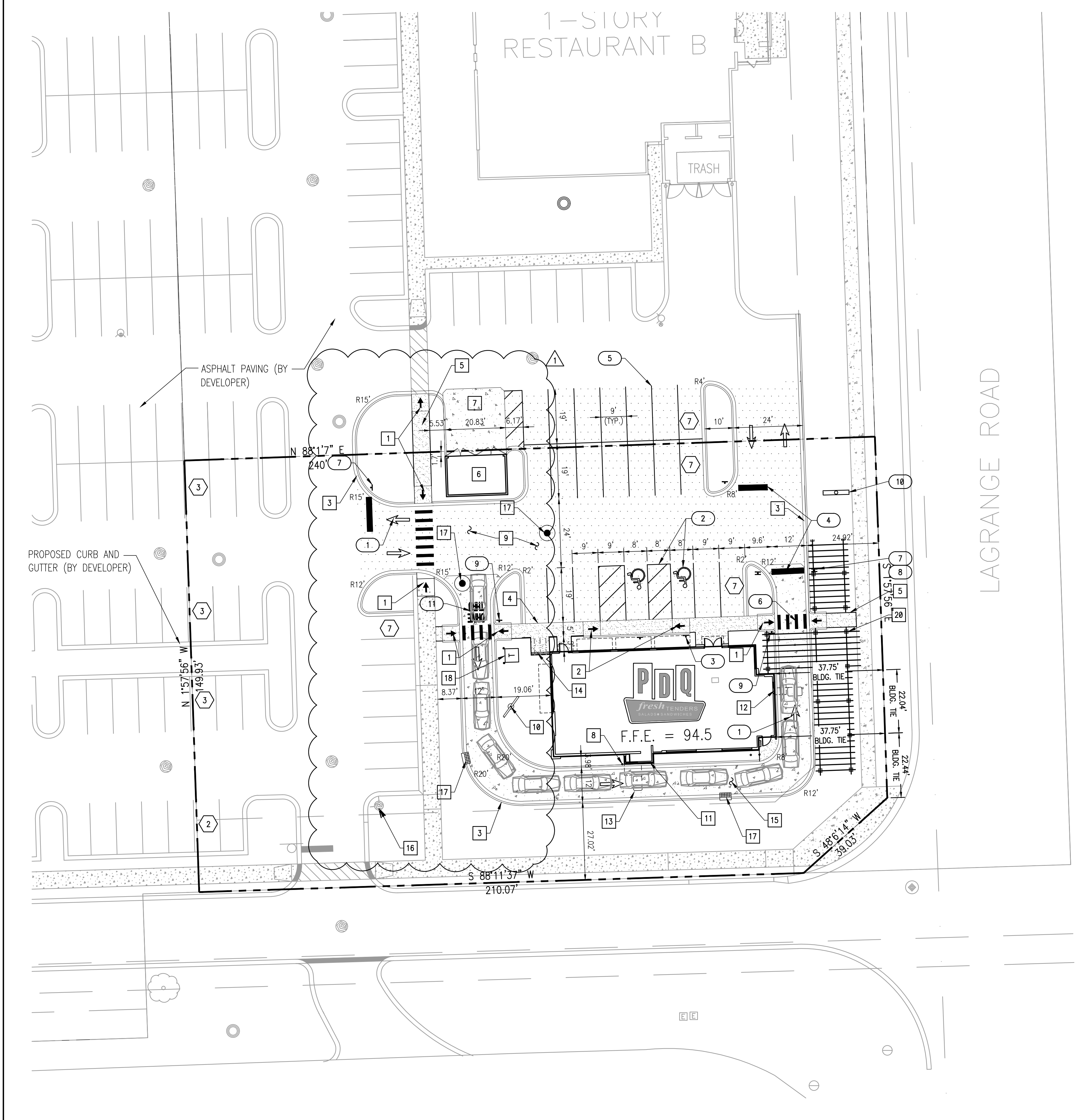
- 1 DIRECTIONAL ARROW (11/C4) (TYP.)
- 2 HANDICAP PAVEMENT SYMBOLS (12/C4) (TYP.)
- 3 HANDICAP SIGN (13/C4) (2 PLACES)
- 4 24" WIDE WHITE STOP BAR (TYP.)
- 5 PAVEMENT STRIPING (4" WHITE) (TYP.)
- 6 24" WIDE WHITE CROSSWALK STRIPING
- 7 30" STOP SIGN (R1-1)
- 8 "DO NOT ENTER" SIGN (R5-1)
- 9 PEDESTRIAN CROSSING SIGN (W-11-2)
- 10 MONUMENT SIGNAGE
- 11 24" WHITE THERMOPLASTIC DRIVE-THRU LETTERS

- ALL TRAFFIC CONTROL SIGNAGE SHALL CONFORM TO "MANUAL ON UNIFORM TRAFFIC CONTROL DEVICES" BY THE U.S. DEPARTMENT OF TRANSPORTATION, FEDERAL HIGHWAY ADMINISTRATION.

- WORK DONE WITHIN LAGRANGE ROAD R.O.W. SUBJECT TO I.D.O.T. REVIEW AND APPROVAL.

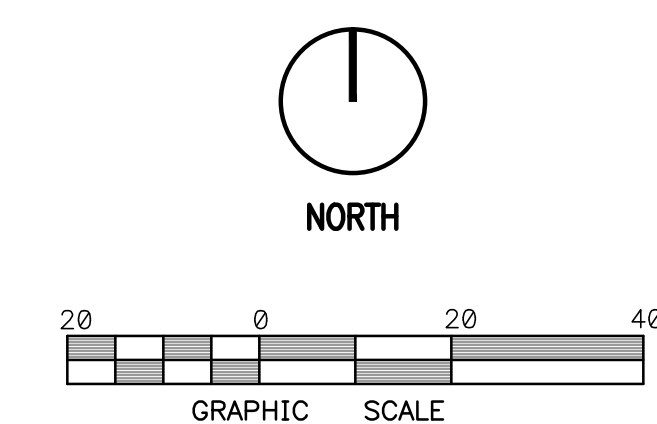
**SITE NOTES**

- 1 HANDICAP RAMP (9/C4) (TYP.)
- 2 SIDEWALK HANDICAP RAMP (16/C4)
- 3 CURB AND GUTTER (6/C4) (TYP.)
- 4 MONOLITHIC CURB AND SIDEWALK (5/C4)
- 5 CONCRETE SIDEWALK (8/C4)
- 6 DUMPSTER ENCLOSURE (1-2/C4)
- 7 CONCRETE APRON (7/C4)
- 8 BOLLARD (4/C4)
- 9 ASPHALT PAVEMENT (10/C4)
- 10 MENU BOARD
- 11 ORDER WINDOW
- 12 PICK UP WINDOW
- 13 SENSOR LOOP
- 14 BIKE RACK (15/C4)
- 15 CONCRETE PAVEMENT (7/C4)
- 16 PROPOSED FIRE HYDRANT (BY DEVELOPER)
- 17 DRAINAGE STRUCTURES
- 18 TRANSFORMER PAD
- 19 LIGHT POLE
- 20 TRELLIS (SEE ARCHITECTURAL PLANS)



**SITE DIMENSION PLAN**

1"=20'



REFER TO SHEET C0 FOR GENERAL NOTES,  
SPECIFICATIONS, AND LEGENDS, IN ADDITION  
TO SITE-SPECIFIC NOTES AND REQUIREMENTS.