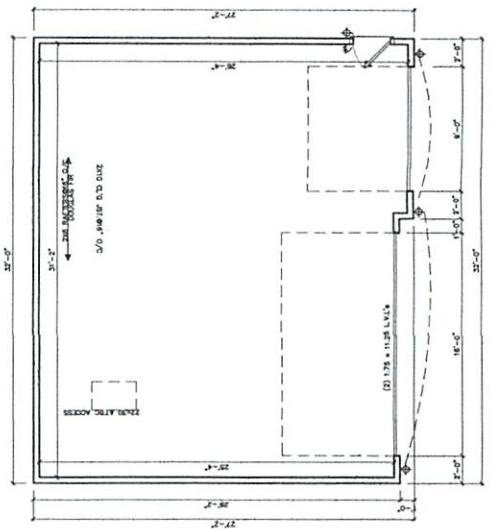
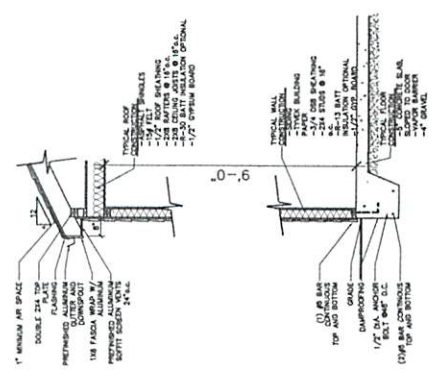
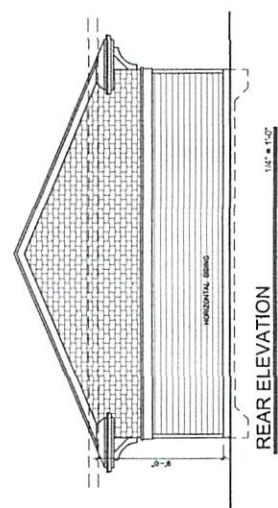
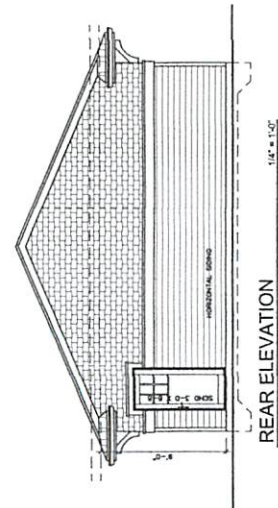
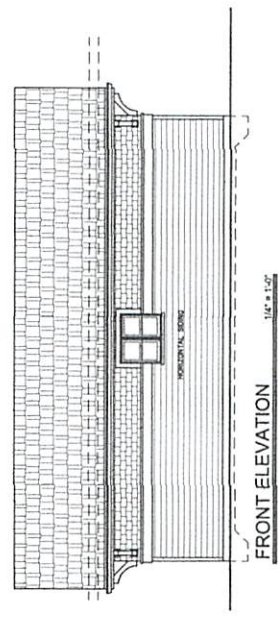
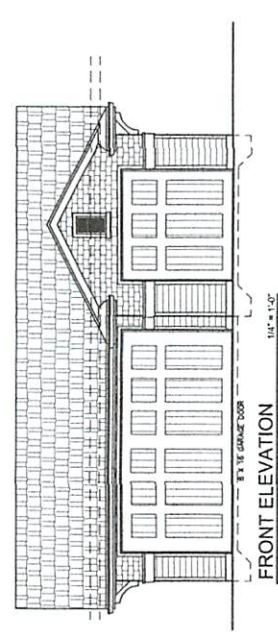
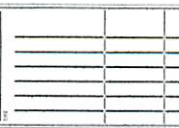
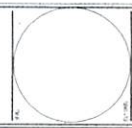


NO. 100	DATE	BY
NO. 101	DATE	BY
NO. 102	DATE	BY
NO. 103	DATE	BY
NO. 104	DATE	BY
NO. 105	DATE	BY
NO. 106	DATE	BY
NO. 107	DATE	BY
NO. 108	DATE	BY
NO. 109	DATE	BY
NO. 110	DATE	BY

Two Story Residence
 For
 9855 W. 144th St.
 Orchard Park, IL 60462

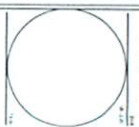


GARAGE FLOOR PLAN
 SCALE 1/8" = 1'-0"

2012-0690
 BOARD APPROVED 2.4.13

NO.	DATE	REVISION

Two Story Residence
 For
 9855 W. 144th St.
 Orchard Park II, 60462



12.11.2012
 2012-137
 A-3.1

