



Design / Build

BURKE, L.L.C.

9575 West Higgins Road • Rosemont, Illinois 60018-4920 • TEL (847) 823-0500 • FAX (847) 823-0520

November 19, 2018

REVISED 12/3/2018

Village of Orland Park
15655 S. Ravinia Avenue
Orland Park, Illinois 60462

Attention: Mr. Doug Medland

Subject: GMP Contract
Village of Orland Park
Fairway Stage 3 Watermain and Drainage Improvement Project

Dear Mr. Medland:

Burke, LLC is pleased to submit a Design / Build Guaranteed Maximum Price (GMP) Proposal for the Fairway Stage 3 Drainage and Watermain Improvement Project.

Please note that we are proposing to utilize the same subcontractor and hold the same pricing as the Stage 2 Watermain and Drainage Project. We can hold pricing due to our familiarity with the project site and because the work will be performed during the winter months.

Enclosed you will find two (2) original copies of Burke, LLC's Construction Management contract and Summary Schedule of Values. The GMP for the work is \$ 2,714,550.00.

If you have any questions, please do not hesitate to call me.

Sincerely,

James F. Amelio, PE
Principal

cc: John Ingram – Village of Orland Park (via email)



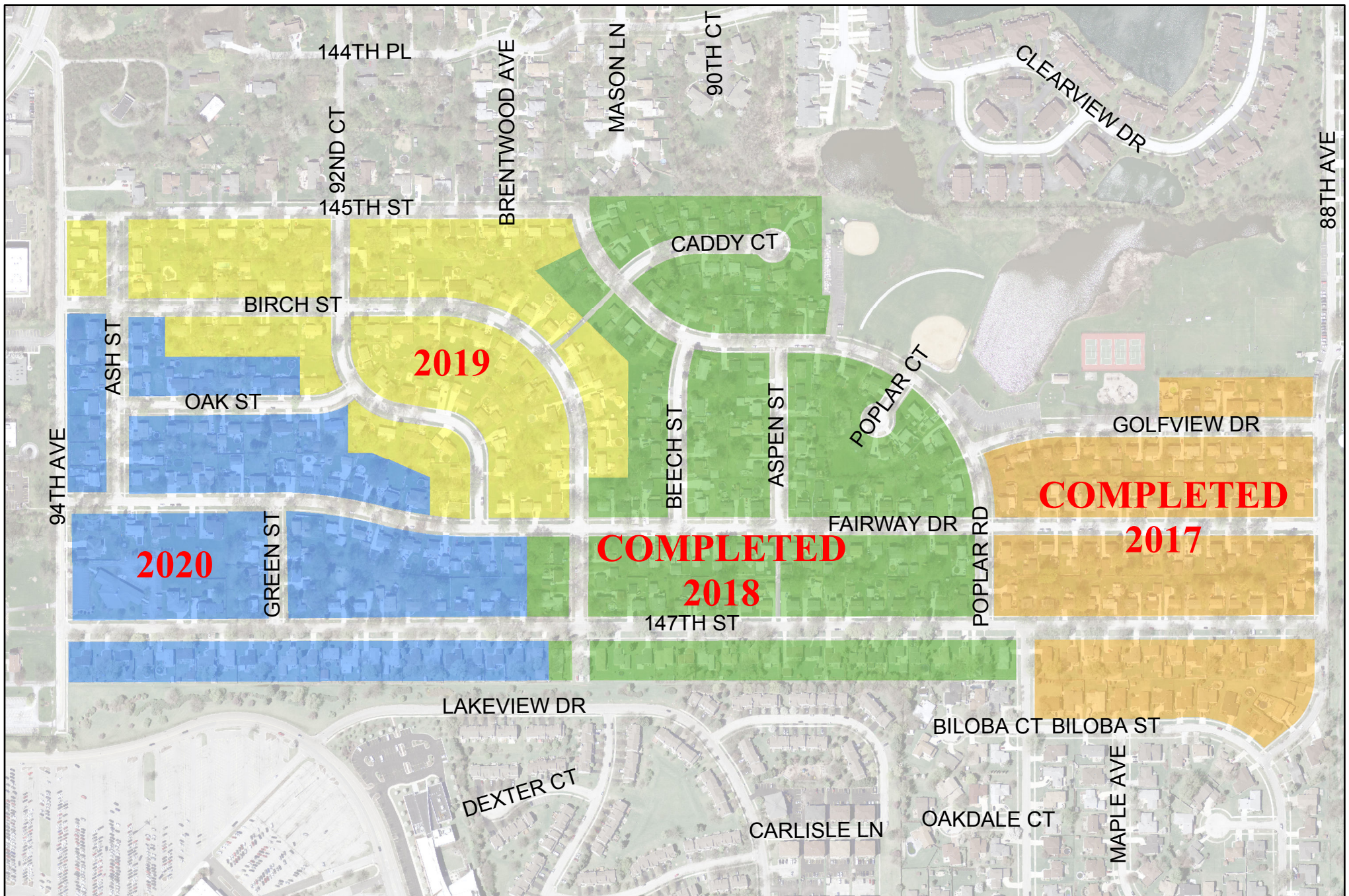
**Fairway Stage 3
Drainage and Watermain
Improvements
Orland Park, Illinois
Exhibit A - Summary Schedule of Values**



Item	Contract Value	
Drainage Improvements	\$	369,300 14%
Drainage Construction	\$	310,000
Easement Exhibit (2 locations - documents only)	\$	5,000
Drainage Survey	\$	6,500
Drainage Design	\$	7,500
Construction Management	\$	24,800
General Conditions (Insurance OH and Profit)	\$	15,500
Water Main Improvements	\$	2,245,250 83%
Water Main Construction	\$	1,925,000
Water Main Design & Permitting	\$	70,000
Construction Management	\$	154,000
General Conditions (Insurance OH and Profit)	\$	96,250
Owners Allowance	\$	100,000 4%
Drainage Improvement Allowance	\$	50,000
Water Main Improvement Allowance	\$	50,000
Contract Price		\$ 2,714,550


Assumptions/Qualifications:

1. We assume that the on site soils are clean. If it is determined that the existing soils are contaminated, then a change order shall be warranted to cover the additional cost.

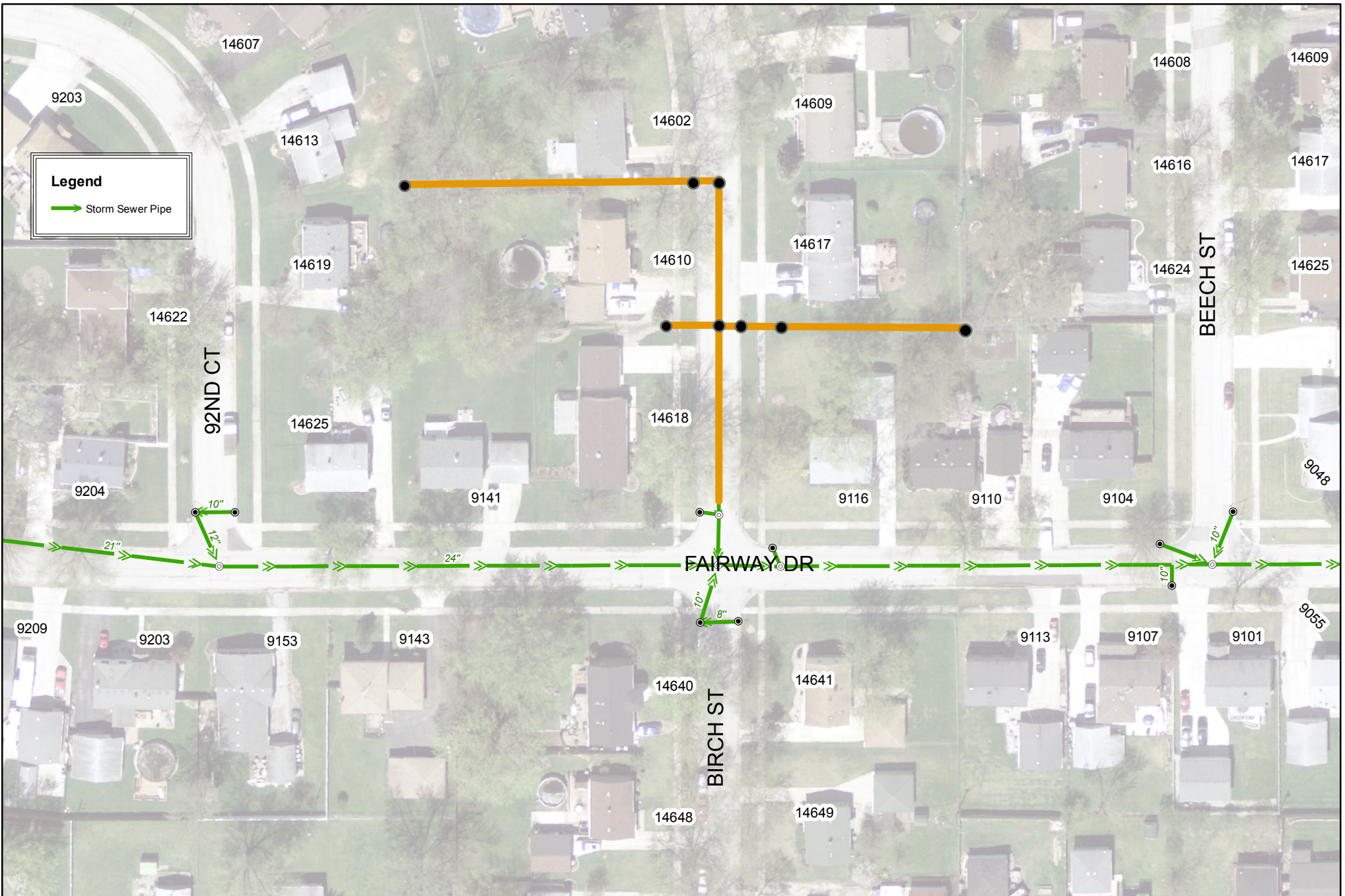


Watermain Replacement Fairway Stages

Legend	
	Fairway Stage 1
	Fairway Stage 2
	Fairway Stage 3
	Fairway Stage 4


 1 inch = 400 feet
 12/10/18

This map is for reference only. The Village makes no representations as to the accuracy of the depicted utility locations or sizes. The data is subject to change without notice. The Village of Orland Park assumes no liability in the use or application of the data. Reproduction or redistribution is forbidden without the expressed written consent from the Village of Orland Park.



Proposed Storm Sewer Birch Street



This map is for reference only. The Village makes no representations as to the accuracy of the depicted utility locations or sizes. The data is subject to change without notice. The Village of Orland Park assumes no liability in the use or application of the data. Reproduction or redistribution is forbidden without the expressed written consent from the Village of Orland Park.