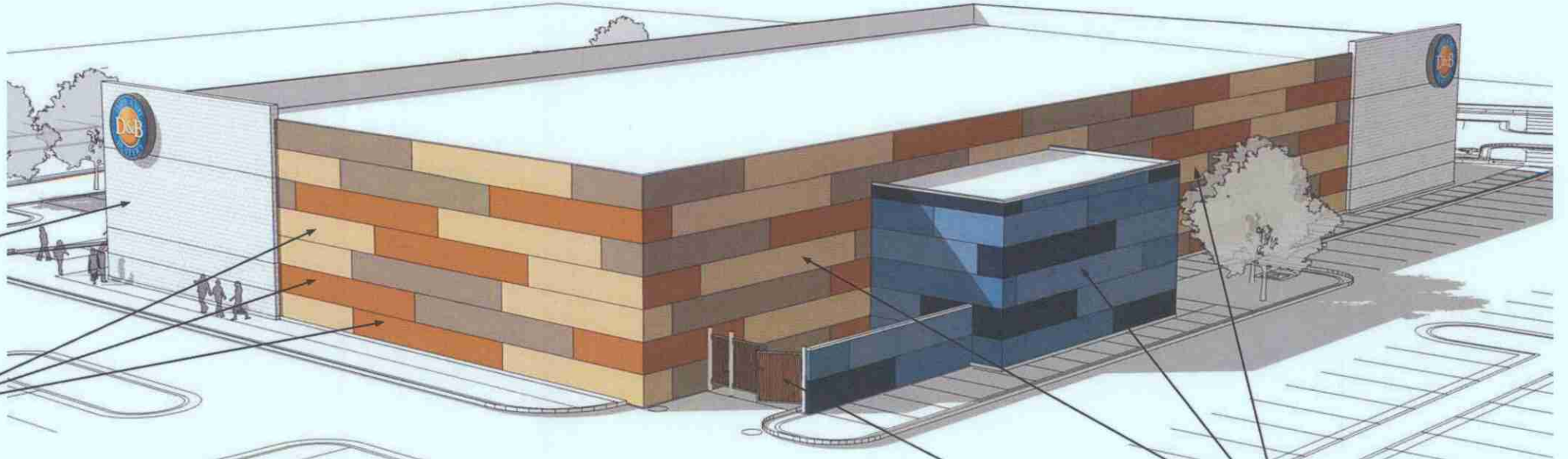


INTEGRAL COLORED OR STAINED
SPLIT-FACED CMU BLOCK

INTEGRAL COLORED OR STAINED
SPLIT-FACED CMU BLOCK w/ COLOR
PATTERN INSTALLED AS SHOWN



SOUTHEAST VIEW

INTEGRAL COLORED OR STAINED
SPLIT-FACED CMU BLOCK w/ COLOR
PATTERN INSTALLED AS SHOWN

SERVICE YARD GATE w/
STAINED WOOD VERTICAL
SLAT SCREEN

DECORATIVE BAND w/
PAINTED PLASTER FASCIA

INTEGRAL COLORED OR STAINED
SPLIT-FACED CMU BLOCK w/ COLOR
PATTERN INSTALLED AS SHOWN

INTEGRAL COLORED OR STAINED
SPLIT-FACED CMU BLOCK



NORTHEAST VIEW

BOARD APPROVED

Case No: 2010-0189

Date: 07-18-11

W/Conditions: yes

W/Out Conditions: _____

DAVE & BUSTER'S



ORLAND PARK

Aria Group Architects, Inc.
ARCHITECTURE • PLANNING • INTERIOR DESIGN

EXTERIOR PERSPECTIVES
BOARD OF TRUSTEES REVIEW
JULY 11, 2011
SCALE: NTS

VILLAGE OF ORLAND PARK