

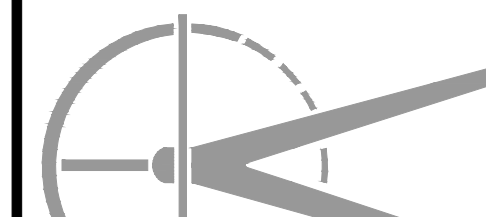
DATE: 03/28/2024

DESCRIPTION: SUBMIT TO VILLAGE OF ORLAND PARK

MeritCorp
ENGINEERING - PLANNING - SURVEYING - ENVIRONMENTAL

4222 Meridian Parkway, Suite 112
Aurora, IL 60504
Office 630.554.6655
Lic. No. 184-005860
www.meritcorp.com

Other Office Locations:
Gurnee, IL



**RIZZA PORSCHE - BLDG & PARKING
ADDITION**
8760 W. 159TH STREET
ORLAND PARK, ILLINOIS 60462

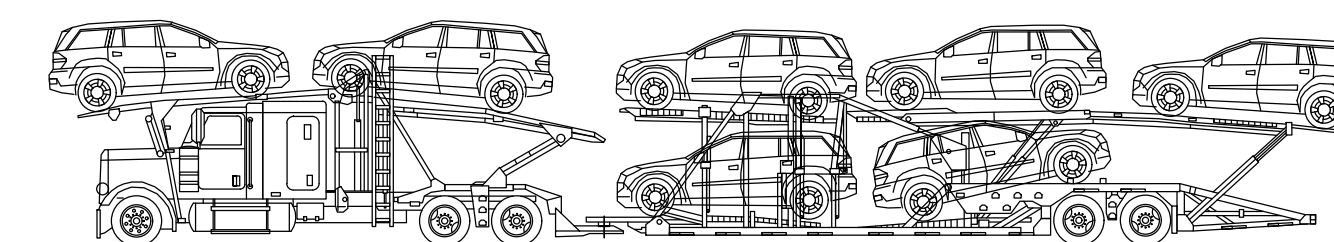
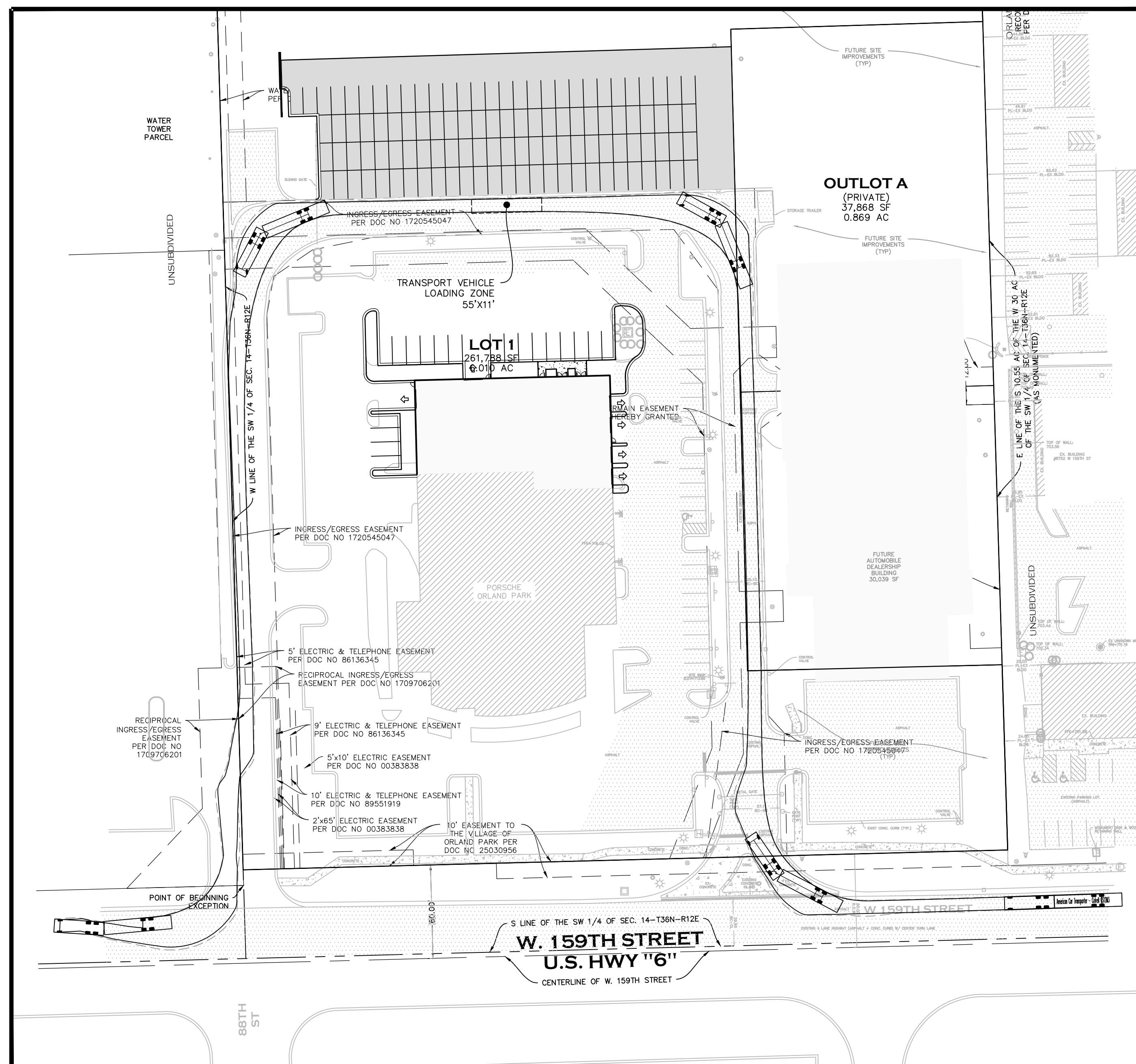
**SITE PLAN & PRELIM ENGINEERING PLANS
VEHICLE TURNING PLAN**

PROJECT NO. M21 149

DRAWN BY: ZDS & NFY

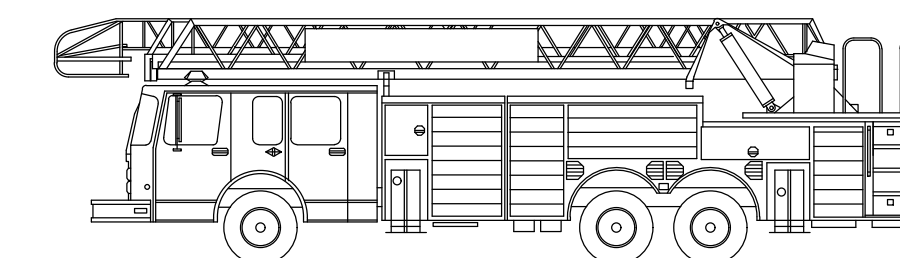
CHECKED BY: TDR

SHEET NO. /6



Cotrell CS12M3

TRACTOR WIDTH: 8.50'
LOCK TO LOCK TIME: 6.0 TRAILER
WIDTH: 8.50'
STEERING ANGLE: 28.6'
TRACTOR TRACK: 8.00'
ARTICULATING ANGLE: 70.0'
TRAILER TRACK: 8.00'



ORLAND PARK FD

CHASSIS: PIERCE LANCE-2000 CHASSIS,PAP/SKYARM/MIDMOUNT
BODY: AERIAL, PLATFORM 100', ALUM BODY

WIDTH : 8.00'
TRACK : 82.92"
STEERING ANGLE : 40.0"
WHEELBASE : 274"

LEGEND

———— WHEEL PATH
- - - - - PATH OF OVERHANG

