

EXTERIOR MATERIAL FINISH SCHEDULE

ID#	DESCRIPTION	MANUFACTURER	MODEL/ COLOR	NOTE
BR-1	UTILITY SIZE BRICK FIELD COLOR	BELDEN BRICK OR APPROVED EQUAL CONTACT ILLINOIS BRICK COMPANY AT (708) 344-1000	(BROWN) BEAVER BLEND SEMI-SMOOTH	
BR-2	UTILITY SIZE BRICK ACCENT COLOR	BELDEN BRICK OR APPROVED EQUAL CONTACT ILLINOIS BRICK COMPANY AT (708) 344-1000	(BUFF) 470-479 LIGHT	
ST-1	8" HIGH X 4" STONE ACCENT VENEER "SMOOTH FACE"	RENAISSANCE MASONRY UNITS OR APPROVED EQUAL CONTACT BUILDING STONE PRODUCTS, INC. AT (630) 257-9220	"WHEAT"	
ST-2	4" HIGH X 4" STONE ACCENT VENEER "ROCK FACE"	RENAISSANCE MASONRY UNITS OR APPROVED EQUAL CONTACT BUILDING STONE PRODUCTS, INC. AT (630) 257-9220	"WHEAT"	
ST-3	12" HIGH X 4" STONE ACCENT VENEER "SMOOTH FACE"	RENAISSANCE MASONRY UNITS OR APPROVED EQUAL CONTACT BUILDING STONE PRODUCTS, INC. AT (630) 257-9220	"WHEAT"	
ST-4	4" HIGH X 4" STONE SILL W/ DRIP EDGE "SMOOTH FACE"	RENAISSANCE MASONRY UNITS OR APPROVED EQUAL CONTACT BUILDING STONE PRODUCTS, INC. AT (630) 257-9220	"WHEAT"	
PR-1	WET CAST PRECAST BALCONY	CALUMET FLEXICORE CONTACT (773) 768-7313	INTERGRAL COLOR TO MATCH RENAISSANCE "WHEAT" COLOR	
CS-1	WET CAST PRECAST BALCONY	CALUMET FLEXICORE CONTACT (773) 768-7313	INTERGRAL COLOR TO MATCH RENAISSANCE "WHEAT" COLOR	
EF-1	PANELEIFS CORNICE SYSTEM	CAST STONE?	INTERGRAL COLOR TO MATCH RENAISSANCE "WHEAT" COLOR	
P-1	PAINT	SHERWIN WILLIAMS ONE (1) COAT "ALL SURFACE ENAMEL PRIMER" TWO (2) COATS "ALL SURFACE ENAMEL ALKYD" OR APPROVED EQUAL SURFACE PREPARATION IN ACCORDANCE WITH MANUFACTURER'S SPECIFICATIONS.	SW- 6390 (BOSC PEAR) OR APPROVED EQUAL	
SF-1	ALUMINIUM STOREFRONT (THERMAL BROKEN) W/ INSULATED NON-GLARE CLEAR LOW-E GLASS	OLDCASTLE GLASS CONTACT AT (866) 653-2278 OR APPROVED EQUAL	SPLIT FINISH (ANODIZED ALUM. "CHAMPAGNE FINISH" EXTERIOR/ PAINT FINISH INTERIOR COLOR TO BE DETERMINED)	
SF-2	ALUMINIUM STOREFRONT (THERMAL BROKEN) W/ INSULATED FROSTED LOW-E GLASS	OLDCASTLE GLASS CONTACT AT (866) 653-2278 OR APPROVED EQUAL	SPLIT FINISH (ANODIZED ALUM. "CHAMPAGNE FINISH" EXTERIOR/ PAINT FINISH INTERIOR COLOR TO BE DETERMINED)	
SF-3	ALUMINIUM STOREFRONT (THERMAL BROKEN) W/ INSULATED NON-GLARE CLEAR LOW-E TEMPERED GLASS	OLDCASTLE GLASS CONTACT AT (866) 653-2278 OR APPROVED EQUAL	SPLIT FINISH (ANODIZED ALUM. "CHAMPAGNE FINISH" EXTERIOR/ PAINT FINISH INTERIOR COLOR TO BE DETERMINED)	
W-1	VINYL WINDOW/ 1" CONTOUR GRILLES (JEN-WEN) W/ INSULATED CLEAR LOW-E 366 GLASS	JEN-WEN VINYL WINDOWS CONTACT SCHAAF WINDOWS CO. AT (708) 342-0900 OR APPROVED EQUAL	COLOR: "DESERT SAND"	
W-2	VINYL WINDOW/ 1" CONTOUR GRILLES (JEN-WEN) W/ INSULATED FROSTED LOW-E 366 GLASS	JEN-WEN VINYL WINDOWS CONTACT SCHAAF WINDOWS CO. AT (708) 342-0900 OR APPROVED EQUAL	COLOR: "DESERT SAND"	
AW	FABRIC AWNING	COLOR: BURGENDY		

Painting General Notes

- The surface must be dry and in sound condition.
- Remove mildew, oil, dust, dirt, loose rust, peeling paint or other contamination to ensure good adhesion.
- No exterior painting should be done immediately after rain, during foggy weather, when rain is predicted or when the temperature is below 50 °F- unless the coating indicates it can be used down to 35°F.

GENERAL NOTES:

- ALL KEYNOTES MAY NOT PERTAIN TO THIS SHEET.
- SEE COLOR SCHEDULE FOR ALL EXTERIOR FINISHES.

ELEVATION KEYNOTES

- SITE CONSTRUCTION:**
 - NO STEP ENTRY (ADA APPROVED)
- MASONRY**
 - BRICK UTILITY FACE BRICK
 - CAST STONE
 - 4" RENAISSANCE BULLNOSE STONE SILL (CONTINUOUS)
 - 12" RENAISSANCE STONE (SMOOTH)
 - 5" RENAISSANCE BULLNOSE STONE BAND
 - 8" RENAISSANCE STONE BAND- PROJECT $\frac{1}{4}$ "
 - 12" RENAISSANCE STONE- PROJECTED $\frac{1}{4}$ "
 - BRICK REVEAL
- METAL**
 - METAL RAILING -42" HIGH
 - METAL PANEL
 - METAL CANOPY
- THERMAL AND MOISTURE PROTECTION**
 - PRE-FINISHED ALUMINUM COPING
 - ARCHITECTURAL GRADE ASPHALT SHINGLE ROOFING
 - VERTICAL EXPANSION JOINT
 - HORIZONTAL SOFT JOINT
- SPECIALTIES**
 - ADDRESS
 - FABRIC AWNING W/ ALUMINUM FRAME
 - LOUVER
- WINDOWS**
CLEAR, LOW E GLASS AT ALL WINDOWS EXCEPT AS NOTED

NO.	BY	DATE	DESCRIPTION
1	SAS	9/20/2007	GENERAL REVISION, CLARIFICATIONS
2	SAS	9/28/2007	GENERAL REVISION, CLARIFICATIONS

NOTE TO BUILDING DEPARTMENT:
THESE DOCUMENTS (PLANS & SPECIFICATIONS) ARE VALID FOR PERMITS ONLY WHEN THE ARCHITECT'S ORIGINAL SEAL AND SIGNATURE APPEARS AND IS AFFIXED, AND UNLESS OTHERWISE PROVIDED IN WRITING ARE INTENDED AS A PERMIT SUBMITTAL FOR ONE (1) BUILDING ONLY.
© The Shalvis Group, P.C. 2007

Proposed Twenty-one Unit Condominium located at the Northwest Corner of Ravinia Avenue / Ravinia Lane
Orland Park, Illinois
BLDG ELEVATION
Preliminary Review

THE SHALVIS GROUP P.C. ARCHITECTURE
11029 W. 183rd Street, Suite 100, Orland Park, Illinois 60467
p. 708.478.6830 f. 708.478.6837 www.shalvisgroup.com

PROJECT ARCHITECT: DATE: 05-15-2007
DRAFTSPERSON: SCALE:
SAS: See Sheet
APPROVED: COMPUTER NAME
PREPARED FOR: BARRETT PROPERTIES RLP
JOHN BARRETT
LOCATION: RAVINIA AVENUE / RAVINIA LANE
ORLAND PARK, ILLINOIS
JOB NUMBER: 2007-014

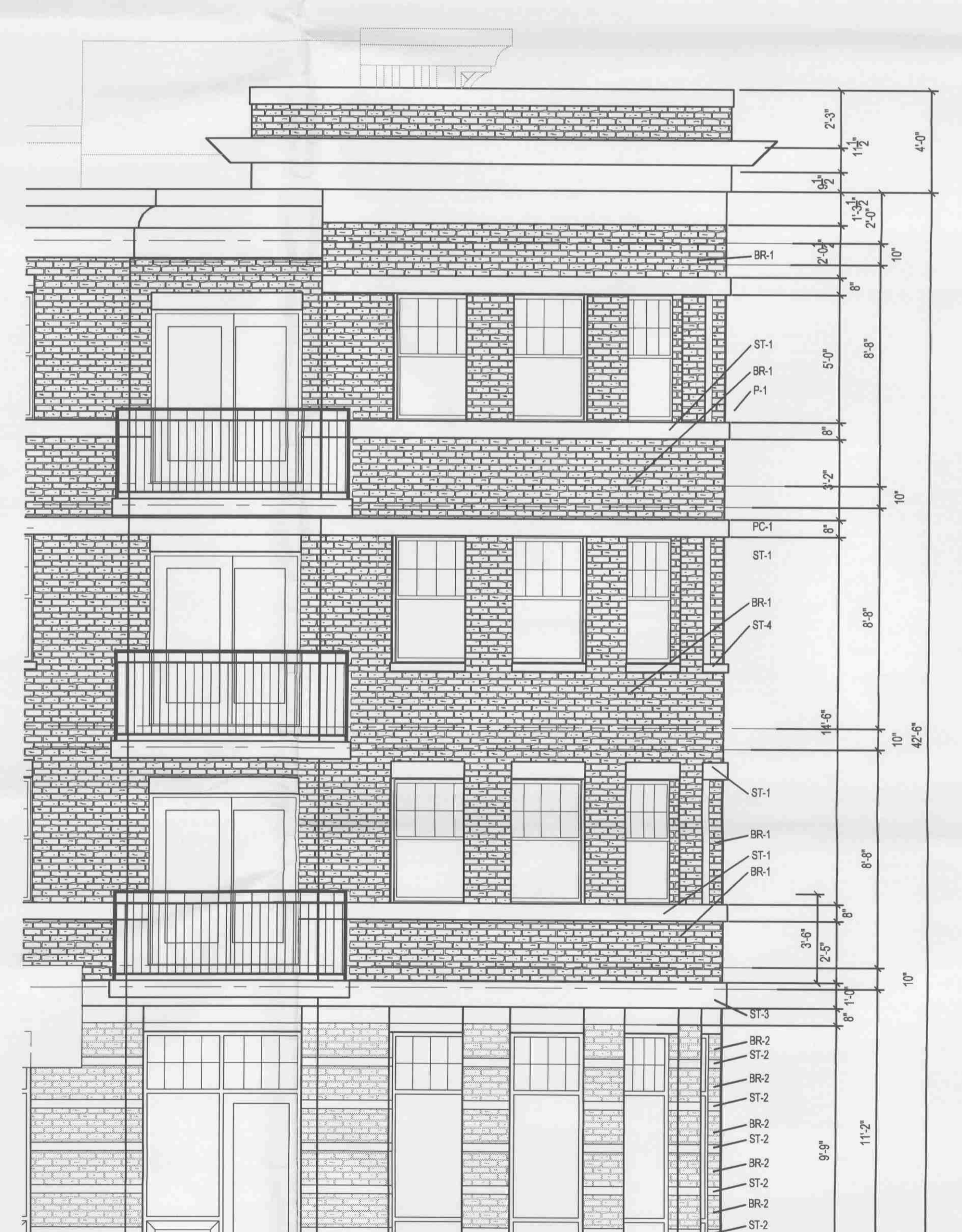
SHEET NUMBER:
A-3.1



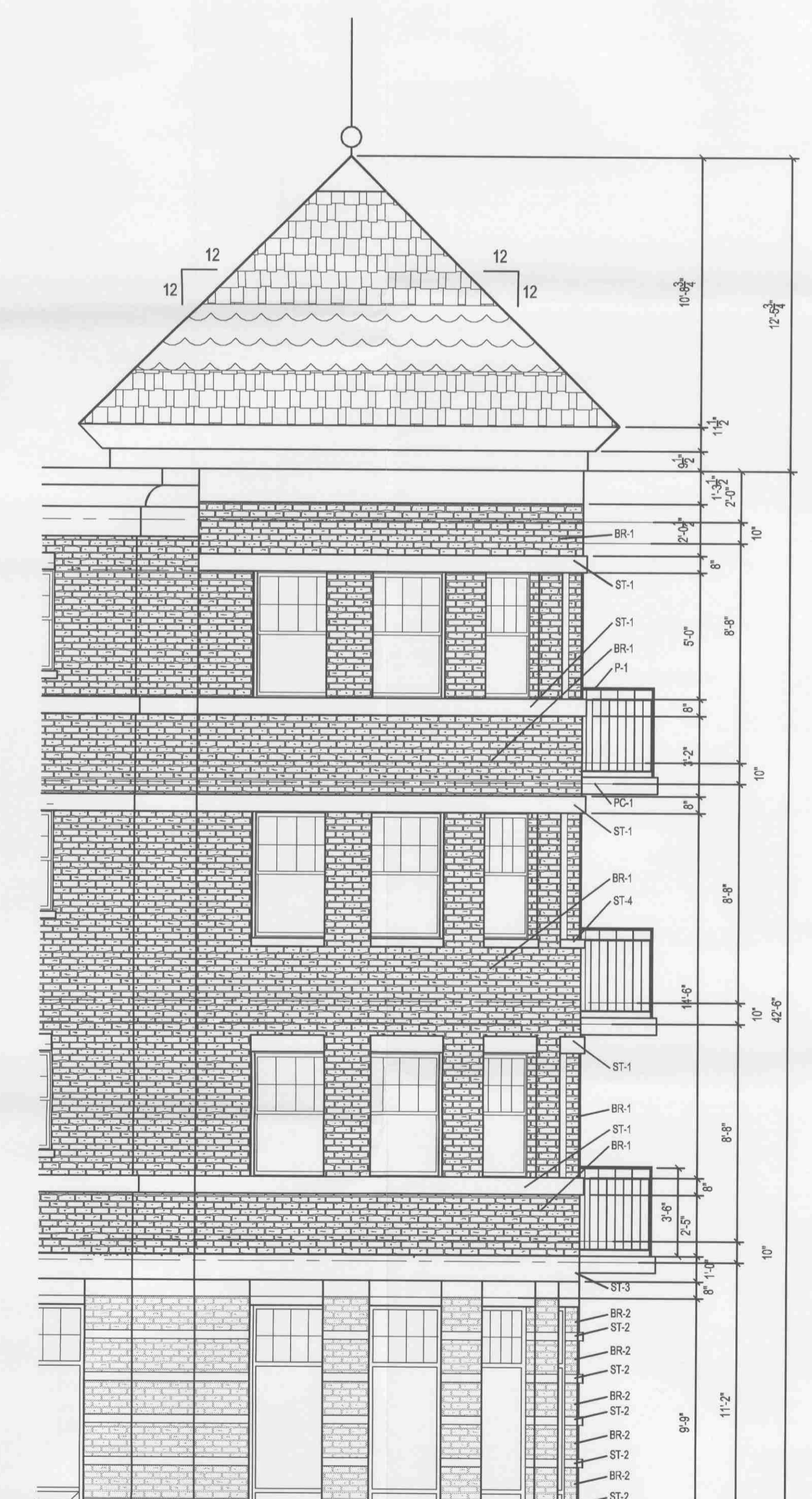
PARTIAL ENLARGED BUILDING ELEVATION
SCALE: $\frac{1}{4}$ " = 1'-0"



PARTIAL ENLARGED BUILDING ELEVATION
SCALE: $\frac{1}{4}$ " = 1'-0"



PARTIAL ENLARGED BUILDING ELEVATION
SCALE: $\frac{1}{4}$ " = 1'-0"



PARTIAL ENLARGED BUILDING ELEVATION
SCALE: $\frac{1}{4}$ " = 1'-0"

© The Shalvis Group, P.C. 2007
Copyright, 2007, The Shalvis Group, P.C. These plans are protected under copyright laws of the United States and foreign countries, and are to be used only for the construction and repair and remodeling of the structure or structures defined in the contract between the Architect and the Owner. Any use of these plans to construct, remodel or repair additional structures constitutes a violation of the Architect's copyright of these plans and is prohibited.