

REVISED

Plant List

Key	Quantity	Name	COMMON/Botanical	Size	Comments
<b>Shade Trees</b>					
ACFR	3	REDPOINTE MAPLE/	Acer x freemanii V. rubrum	2.5' BB	
ACNI	7	GREENCOLUMN BLACK MAPLE/	Acer nigrum 'Greencolumn'	2.5' BB	
ACTR	2	PACIFIC SUNSET MAPLE/	Acer truncatum 'Pacific Sunset'	2.5' BB	
ACSA	8	GREEN MOUNTAIN SUGAR MAPLE/	Acer saccharum 'Green Mountain'	2.5' BB	
CEOC	5	COMMON HACKBERRY/	Celtis occidentalis	2.5' BB	
GIBI	4	PRINCETON SENTRY GINKGO/	Ginkgo biloba 'Princeton Sentry'	2.5' BB	Male Only
GLTR	5	THORNLESS HONEYLOCUST/	Gleditsia tricanthos	2.5' BB	
LITU	5	TULIP TREE/	Liriodendron tulipifera	2.5' BB	
NYSY	4	BLACK TUPELO/	Nyssa sylvatica	2.5' BB	
PLAC	2	EXCLAMATION LONDON PLANETREE/	Platanus x acerifolia 'Morton Circle'	2.5' BB	
PYCA	6	ARISTOCRAT PEAR/	Pyrus calleryana 'Aristocrat'	2.5' BB	
QUSH	3	SHUMARD OAK/	Quercus shumardii	2.5' BB	
TICO	8	GREENSPIRE LITTLELEAF LINDEN/	Tilia cordata 'Greenspire'	2.5' BB	
ULAC	2	HOMESTEAD ELM/	Ulmus 'Homestead'	2.5' BB	
<b>Ornamental Trees</b>					
AMGR	4	AUTUMN BRILLIANCE SERVCEBERRY/	Amelanchier grandiflora 'Autumn Brilliance'	6' BB	
CRCR	2	THORNLESS COCKSPUR HAWTHORN/	Crataegus crus-galli	6' BB	
MAPR	4	PRAIRIEFIRE CRABAPPLE/	Malus 'Prairiefire'	6' BB	
MASN	5	SPRING SNOW CRABAPPLE/	Malus 'Spring Snow'	6' BB	
<b>Shrubs</b>					
ARME	23	VIKING BLACK CHOKEBERRY/	Aronia melanocarpa 'Viking'	3'	Planted 4'-0" on center
EUAL	6	DWARF BURNING BUSH/	Euonymus alatus 'Compactus'	3'	Planted 4'-0" on center
COAL	8	COMPACT REDOISER DOGWOOD/	Cornus alba	3'	Planted 4'-0" on center
COLU	15	PEKING COTONEASTER/	Cotoneaster acutifolia 'Peking'	3'	Planted 4'-0" on center
CORA	35	GRAY DOGWOOD/	Cornus racemosa	3'	Planted 4'-0" on center
FONO	18	NORTHERN GOLD FORSYTHIA/	Forsythia 'Northern Gold'	3'	Planted 4'-0" on center
FOVI	22	BRONXENSIS FORSYTHIA/	Forsythia vridisima 'Bronxensis'	2'	Planted 3'-0" on center
HYDE	35	RED STAR ST. JOHNSWORT/	Hypericum densiflorum 'Red Star'	2'	Planted 3'-0" on center
PHOP	51	SUMMER WINE NINEBARK/	Physocarpus opulifolius 'Summer Wine'	3'	Planted 4'-0" on center
POFR	30	GOLDFINGER POTENTILLA/	Potentilla fructosa 'Goldfinger'	3'	Planted 4'-0" on center
RHAR	8	GRO-LOW SUMAC/	Rhus aromatica 'Gro-low'	2'	Planted 3'-0" on center
RIAL	31	ALPINE CURRANT/	Ribes alpinum	3'	Planted 4'-0" on center
ROKO	9	KNOCK OUT ROSE/	Rosa 'Knock Out'	3'	Planted 4'-0" on center
SPBU	48	ANTHONY WATERER SPIREA/	Spiraea x bumalda	3'	Planted 3'-0" on center
VIDE	35	ARROWWOOD VIBURNUM/	Viburnum dentatum	3'	Planted 4'-0" on center
<b>Evergreen Shrubs</b>					
JUCH	17	SEA GREEN JUNIPER/	Juniperus chinensis 'Sea Green'	3'	Planted 4'-0" on center
JUHO	15	BLUE CHIP JUNIPER/	Juniperus horizontalis 'Blue Chip'	24"	Planted 3'-0" on center
TAME	29	HICKS 'YEW' TAXUS MEDIA/	Taxus media 'Hicksii'	24"	Planted 4'-0" on center
THOC-8	8	DARK GREEN ARBORVITAE/	Thuja occidentalis 'Nigra'	8' BB	Planted 4'-0" on center
THOC-11	11	DARK GREEN ARBORVITAE/	Thuja occidentalis 'Nigra'	6' BB	Planted 4'-0" on center
<b>Perennials / Groundcovers</b>					
HEPM	100	PARDON ME DAYLILLY/	Hemerocallis 'Pardon Me'	#1 Container	Planted 1'-0" on center
PATR	6	BOSTON M/V PARTENCISSUS/	Tricuspidata	#1 Container	Planted 10'-0" on center
VMI	60	DART'S BLUE PERWINKLE/	Viola minor 'Dart's Blue'	#1 Container	Planted 2'-0" on center

Village Landscape Requirements

**Buffering Requirements:**

**North Buffer - 330 linear feet**  
 Commercial adjacent to DUI/Attached - Type 3 Buffer (10' Req.) 15' Proposed  
 6' Fence requirement being waived per Village based on existing wall  
 330 / 100 : 3.3 x 4 : (13.2) 13 Canopy Trees  
 3.3 x 16 : (52.8) 53 Shrubs  
**13 Canopy Trees and 53 Shrubs Provided on Plan**

**East Buffer - 357.8 linear feet**  
 Commercial adjacent to Vacant Commercial - Type 1 Buffer (10' Req.) 0' Proposed  
 357.8 / 100 : 3.6 x 3 : (10.8) 11 Canopy Trees  
 3.6 x 1 : (3.6) 4 Understory Trees  
 3.6 x 16 : (57.6) 58 Shrubs  
**16 Canopy Trees, 6 Understory Trees, and 65 Shrubs Provided on Plan**

**South Buffer - 331.3 linear feet**  
 Commercial adjacent to Developed Commercial - Type 1 Buffer (10' Req.) 0' Proposed  
 331.3 / 100 : 3.31 x 3 : (9.9) 10 Canopy Trees  
 3.31 x 1 : (3.31) 3 Understory Trees  
 3.31 x 16 : (52.96) 60 Shrubs  
**11 Canopy Trees, 3 Understory Trees, and 60 Shrubs Provided on Plan**

**West Buffer - 195 linear feet**  
 Commercial adjacent to Developed Commercial - Type 1 Buffer (10' Req.) 10' Proposed  
 195 / 100 : 2.0 x 3 : (6.0) 6 Canopy Trees  
 2.0 x 1 : (2.0) 2 Understory Trees  
 2.0 x 16 : (32.0) 32 Shrubs  
**6 Canopy Trees, 3 Understory Trees, and 32 Shrubs Provided on Plan**

**Interior Lot Landscaping**  
 1 Tree per 10,000 square feet of lot area for development  
 2.94 acres : 128,066.4 sq. ft. / 10,000 sq. ft. : (12.8) 13 Canopy Trees  
**13 Canopy Trees Provided on Plan**

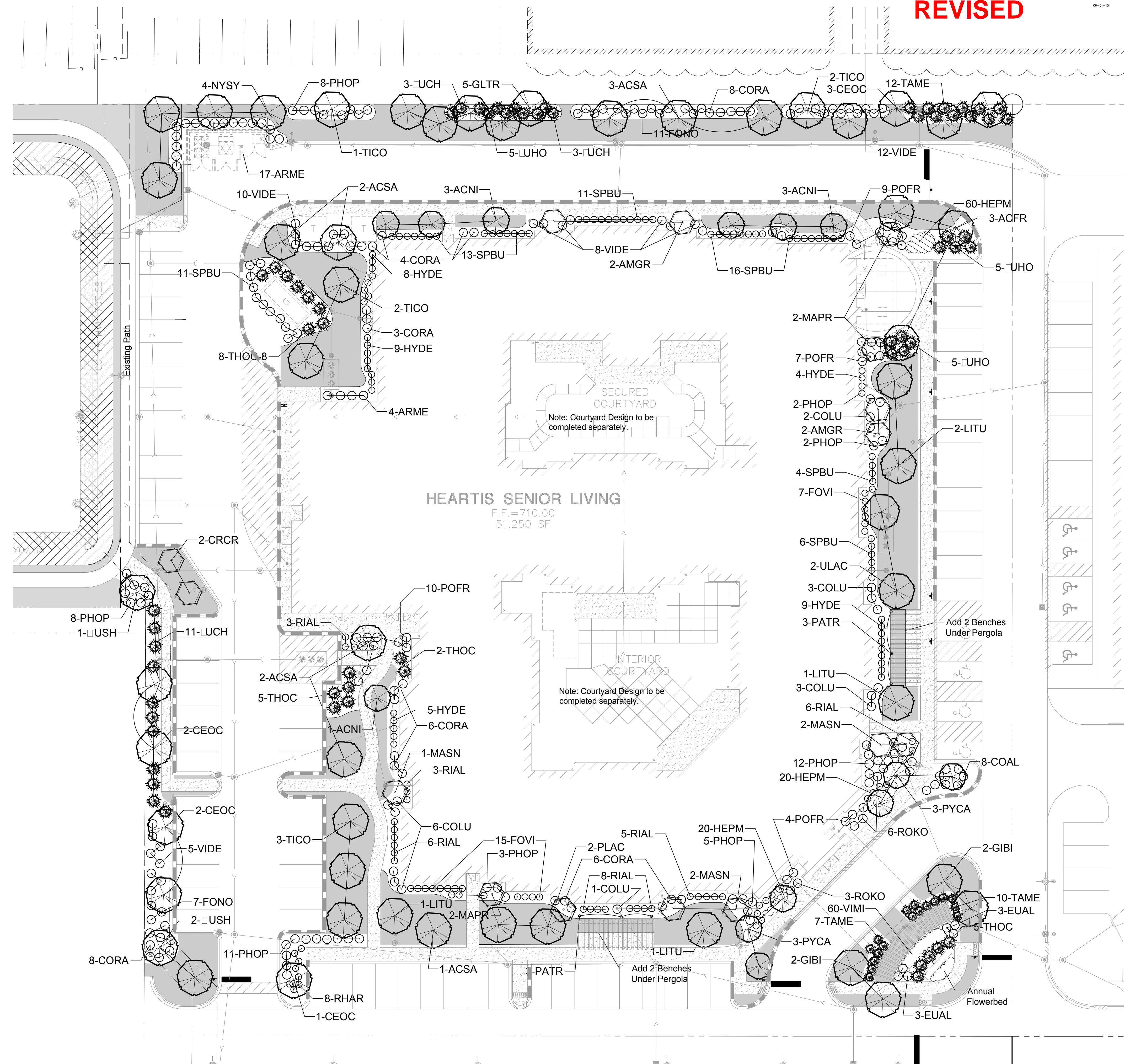
**Foundation Landscaping**  
 70% Foundation Landscaping (at min. 10' in width) to be shown adjacent to Buildings along major access lanes.

Turf Areas  
4" Shredded Bark Mulch Provided in Planting Beds

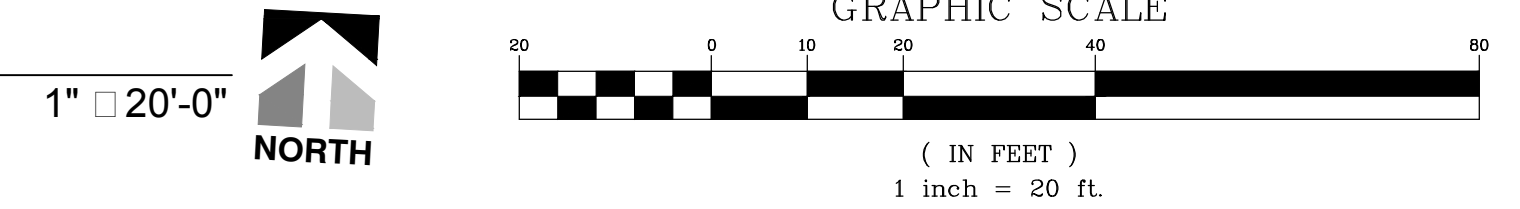
BOARD APPROVED

Case No: 2016-0862  
 Date: 04/27/2016  
 W/Conditions: X - Revised 8/15/17  
 W/Out Conditions: X - Revised 8/15/17

VILLAGE OF ORLAND PARK



Preliminary Landscape Plan  
Scale:

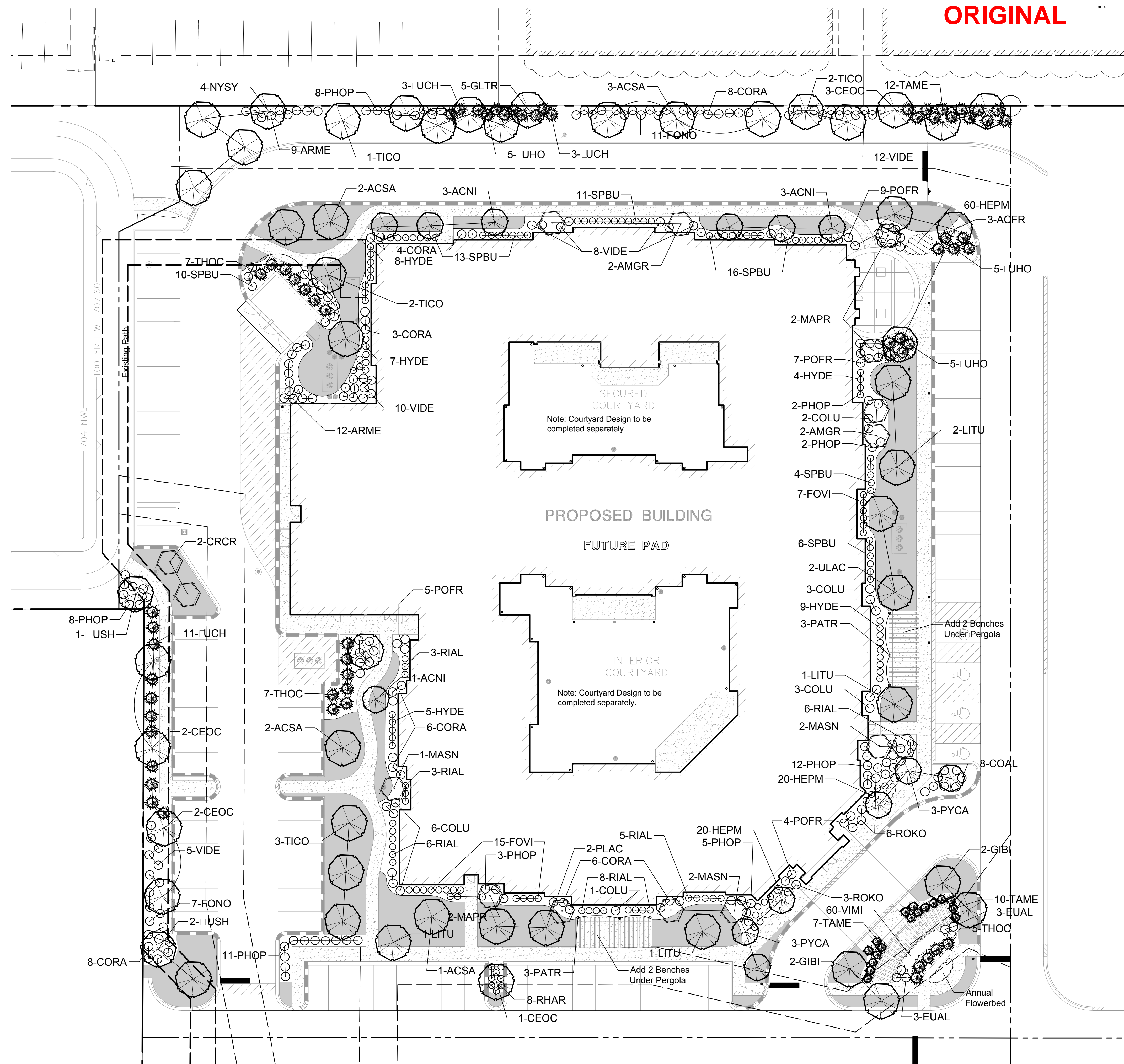


DRAWN BY: JBD  
 CHECKED BY: JBD  
 DATE: 04-27-16  
 PROJECT: HEARTIS SENIOR LIVING  
 SHEET: L1 OF L3  
 CADOP101

**Manhard CONSULTING LTD.**  
 800 Woodside Parkway, Vernon Hills, IL 60061  
 847.434.1550  
 manhard.com  
 Construction Management • Environmental Science • Planning

HEARTIS ORLAND PARK - SENIOR LIVING  
 ORLAND PARK, ILLINOIS  
 FINAL LANDSCAPE PLANS

ORIGINAL



Plant List

Key	Quantity	Name	COMMON Botanical	Size	Comments
<b>Shade Trees</b>					
ACFR	3	REDPOINTE MAPLE/	Acer x fremani V. rubrum	2.5' BB	
ACNI	7	GREENCOLUMN BLACK MAPLE/	Acer nigrum 'Greencolumn'	2.5' BB	
ACTR	2	PACIFIC SUNSET MAPLE/	Acer truncatum 'Pacific Sunset'	2.5' BB	
ACSA	8	GREEN MOUNTAIN SUGAR MAPLE/	Acer saccharum 'Green Mountain'	2.5' BB	
CEOC	5	COMMON HACKBERRY/	Celtis occidentalis	2.5' BB	
GIBI	4	PRINCETON SENTRY GINKGO/	Ginkgo biloba 'Princeton Sentry'	2.5' BB	Male Only
GLTR	5	THORNLESS HONEYLOCUST/	Gleditsia tricanthos	2.5' BB	
LITU	5	TULIP TREE/	Liriodendron tulipifera	2.5' BB	
NYSY	4	BLACK TUPELO/	Nyssa sylvatica	2.5' BB	
PLAC	2	EXCLAMATION LONDON PLANETREE/	Platanus x acerifolia 'Morton Circle'	2.5' BB	
PYCA	6	ARISTOCRAT PEAR/	Pyrus calleryana 'Aristocrat'	2.5' BB	
QUSH	3	SHUMARD OAK/	Quercus shumardii	2.5' BB	
TICO	8	GREENSPIRE LITTLELEAF LINDEN/	Tilia cordata 'Greenspire'	2.5' BB	
ULAC	2	HOMESTEAD ELM/	Ulmus 'Homestead'	2.5' BB	
<b>Ornamental Trees</b>					
AMGR	4	AUTUMN BRILLIANCE SERVICEBERRY/	Amelanchier grandiflora 'Autumn Brilliance'	6' BB	
CRCR	2	THORNLESS COCKSPUR HAWTHORN/	Crataegus crus-galli	6' BB	
MWRP	4	PRAIRIEFIRE CRABAPPLE/	Malus 'Prairiefire'	6' BB	
MASN	5	SPRING SNOW CRABAPPLE/	Malus 'Spring Snow'	6' BB	
<b>Shrubs</b>					
ARME	23	VIKING BLACK CHOKEBERRY/	Aronia melanocarpa 'Viking'	3'	Planted 4'-0" on center
EUAL	6	DWARF BURNING BUSH/	Euonymus alatus 'Compactus'	3'	Planted 4'-0" on center
COAL	8	COMPACT REDOISER DOGWOOD/	Cornus alba	3'	Planted 4'-0" on center
COLU	15	PEKING COTONEASTER/	Cotoneaster acutifolia 'Peking'	3'	Planted 4'-0" on center
CORA	35	GRAY DOGWOOD/	Cornus racemosa	3'	Planted 4'-0" on center
FONO	18	NORTHERN GOLD FORSYTHIA/	Forsythia 'Northern Gold'	3'	Planted 4'-0" on center
FOV	22	BRONXENSIS FORSYTHIA/	Forsythia viridissima 'Bronxensis'	2'	Planted 3'-0" on center
HYDE	33	RED STAR ST. JOHNSWORT/	Hypericum densiflorum 'Red Star'	2'	Planted 3'-0" on center
PHOP	51	SUMMER WINE NINEBARK/	Physocarpus opulifolius 'Summer Wine'	3'	Planted 4'-0" on center
POFR	30	GOLDFINGER POTENTILLA/	Potentilla fructosa 'Goldfinger'	3'	Planted 4'-0" on center
RHAR	8	GRO-LOW SUMAC/	Rhus aromatica 'Gro-low'	2'	Planted 3'-0" on center
RIAL	31	ALPINE CURRANT/	Ribes alpinum	3'	Planted 3'-0" on center
ROKO	9	KNOCK OUT ROSE/	Rosa 'Knock Out'	3'	Planted 4'-0" on center
SPBU	47	ANTHONY WATERER SPIREA/	Spiraea x bumalda	3'	Planted 3'-0" on center
VIDE	35	ARROWWOOD VIBURNUM/	Viburnum dentatum	3'	Planted 4'-0" on center
<b>Evergreen Shrubs</b>					
JUCH	17	SEA GREEN JUNIPER/	Juniperus chinensis 'Sea Green'	3'	Planted 4'-0" on center
JUHO	15	BLUE CHIP JUNIPER/	Juniperus horizontalis 'Blue Chip'	24"	Planted 3'-0" on center
TAME	29	HICKS YEW/	Taxus media 'Hicksii'	24"	Planted 4'-0" on center
THOC	19	DARK GREEN ARBORVITAE/	Thuja occidentalis 'Nigra'	6' BB	Planted 4'-0" on center
<b>Perennials / Groundcovers</b>					
HEPM	100	PARDON ME DAYLILLY/	Hemerocallis 'Pardon Me'	#1 Container	Planted 1'-0" on center
PATR	6	BOSTON NY/	Partenocissus tricuspidata	#1 Container	Planted 10'-0" on center
VMI	60	DARTS BLUE PERIWINKLE/	Vinca minor 'Dart's Blue'	#1 Container	Planted 2'-0" on center

Village Landscape Requirements

**Buffering Requirements:**

**North Buffer** - 330 linear feet  
Commercial adjacent to DU/Attached - Type 3 Buffer (10' Req.) 15' Proposed  
6' Fence requirement being waived per Village based on existing wall  
330 / 100 = 3.3 x 4 = (13.2) 13 Canopy Trees  
3.3 x 16 = (52.8) 53 Shrubs  
13 Canopy Trees and 53 Shrubs Provided on Plan

**East Buffer** - 357.8 linear feet  
Commercial adjacent to Vacant Commercial - Type 1 Buffer (10' Req.) 0' Proposed  
357.8 / 100 = 3.6 x 3 = (10.8) 11 Canopy Trees  
3.6 x 1 = (3.6) 4 Understory Trees  
3.6 x 16 = (57.6) 58 Shrubs  
16 Canopy Trees, 6 Understory Trees, and 65 Shrubs Provided on Plan

**South Buffer** - 331.3 linear feet  
Commercial adjacent to Developed Commercial - Type 1 Buffer (10' Req.) 0' Proposed  
331.3 / 100 = 3.31 x 3 = (9.9) 10 Canopy Trees  
3.31 x 1 = (3.31) 3 Understory Trees  
3.31 x 16 = (52.96) 53 Shrubs  
11 Canopy Trees, 3 Understory Trees, and 60 Shrubs Provided on Plan

**West Buffer** - 195 linear feet  
Commercial adjacent to Developed Commercial - Type 1 Buffer (10' Req.) 10' Proposed  
195 / 100 = 2.0 x 3 = (6.0) 6 Canopy Trees  
2.0 x 1 = (2.0) 2 Understory Trees  
2.0 x 16 = (32.0) 32 Shrubs  
6 Canopy Trees, 3 Understory Trees, and 32 Shrubs Provided on Plan

**Interior Lot Landscaping**  
1 Tree per 10,000 square feet of lot area for development  
2.94 acres = 128,066.4 sq. ft. / 10,000 sq. ft. = (12.8) 13 Canopy Trees  
13 Canopy Trees Provided on Plan

**Foundation Landscaping**  
70% Foundation Landscaping (at min. 10' in width) to be shown adjacent to Buildings along major access lanes.

Turf Areas  
4" Shredded Bark Mulch Provided in Planting Beds

**BOARD APPROVED**

Case No: 2016-0862  
Date: 04/27/2016

W/Conditions: X - Revised 8/15/17  
W/Out Conditions:

VILLAGE OF ORLAND PARK

Preliminary Landscape Plan  
Scale:

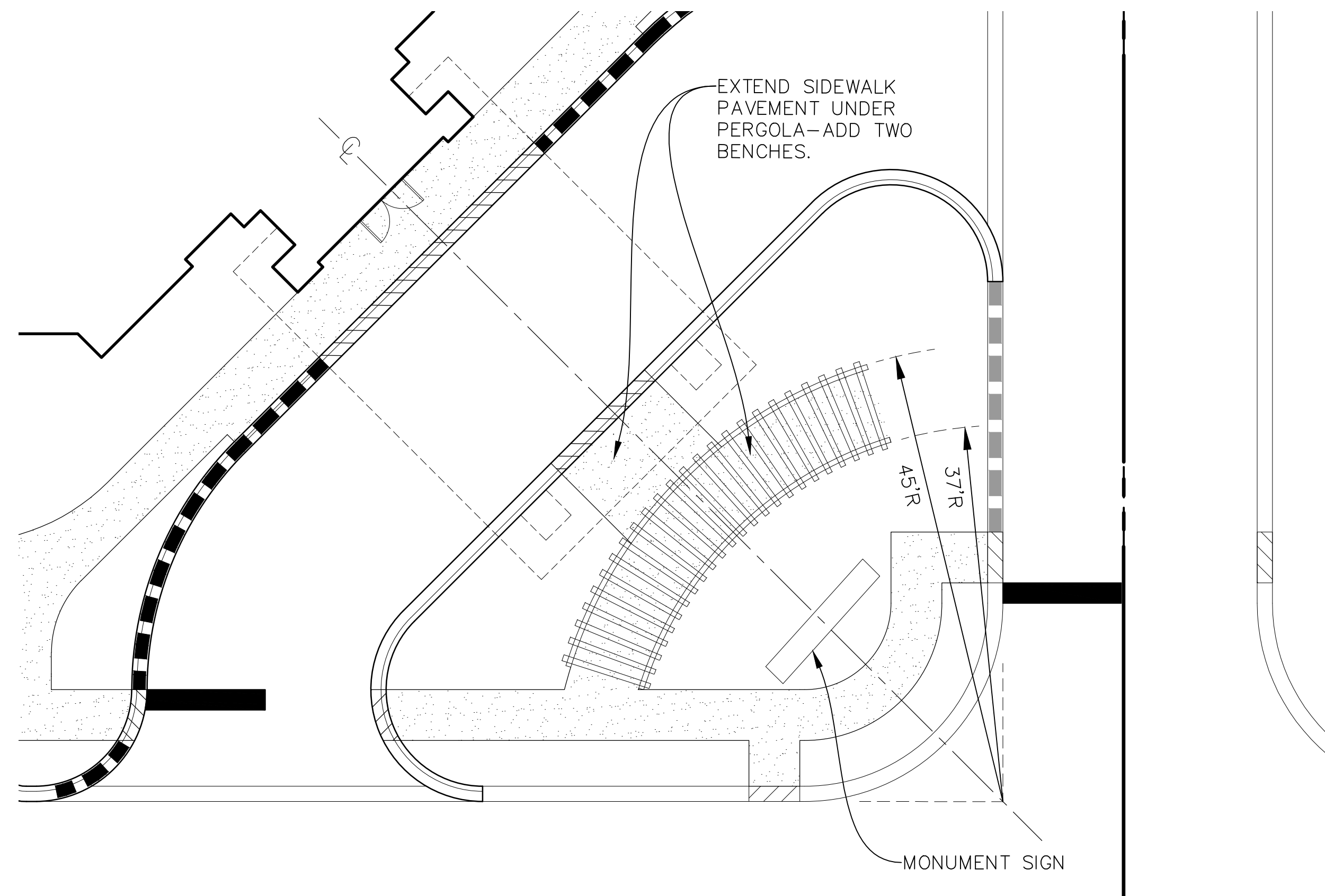


MANHARD CONSULTING LTD.  
800 Woodbine Parkway, Suite 100, Woodbine, IL 60098  
Civil Engineers • Surveyors • Water Resource Engineers • Wetland & Wetland Mitigation Engineers • Environmental Scientists • Planners • Construction Managers

HEARTIS ORLAND PARK - SENIOR LIVING  
ORLAND PARK, ILLINOIS  
FINAL LANDSCAPE PLANS

PROJ. MGR.: JC  
PROJ. ASSOC.: GCM1  
DRAWN BY: JBD  
DATE: 3-10-16  
SCALE: 1" = 20'

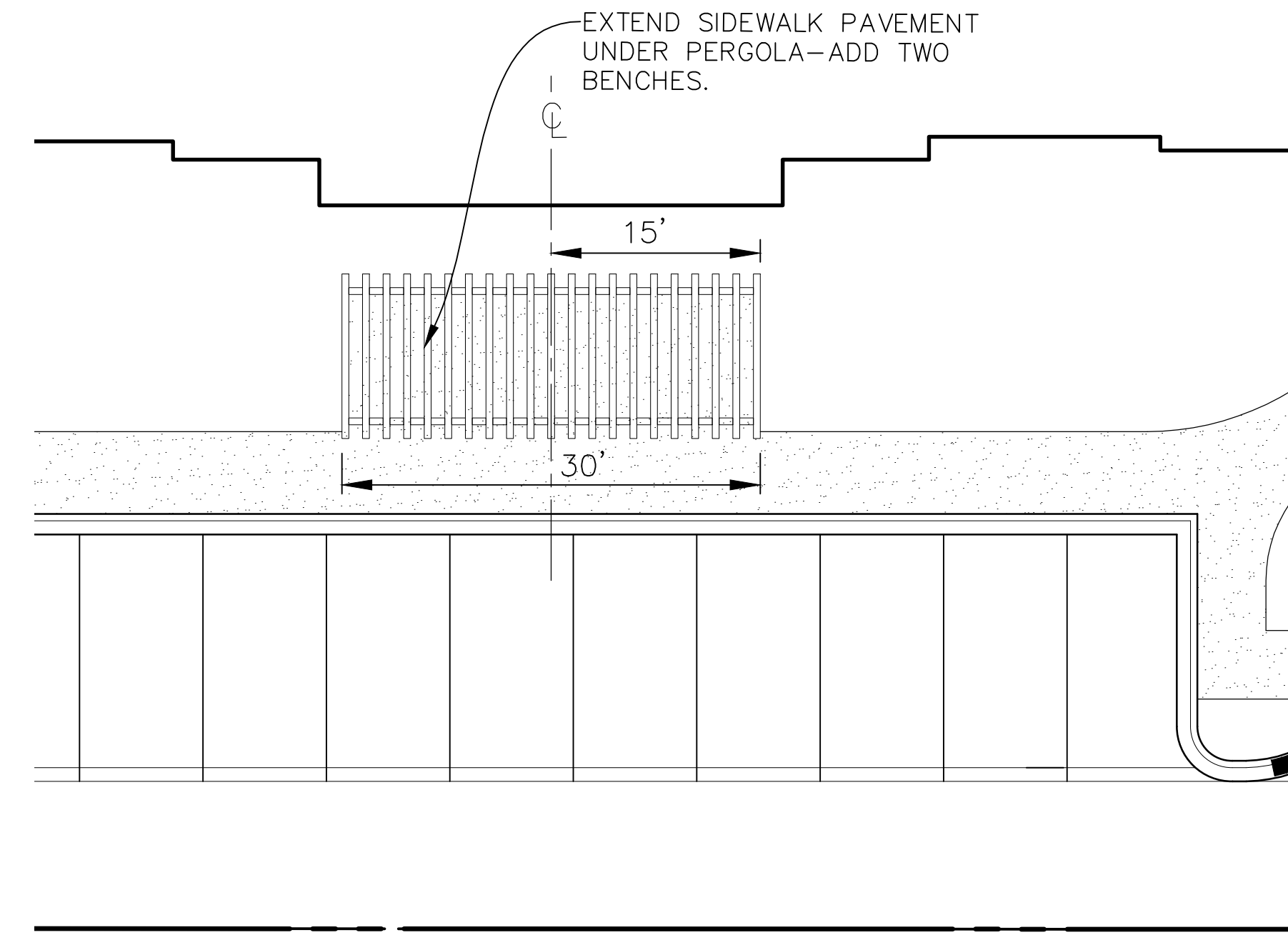
SHEET  
L1 OF L3  
CADOPI01



Entry Pergola Detail

Scale:

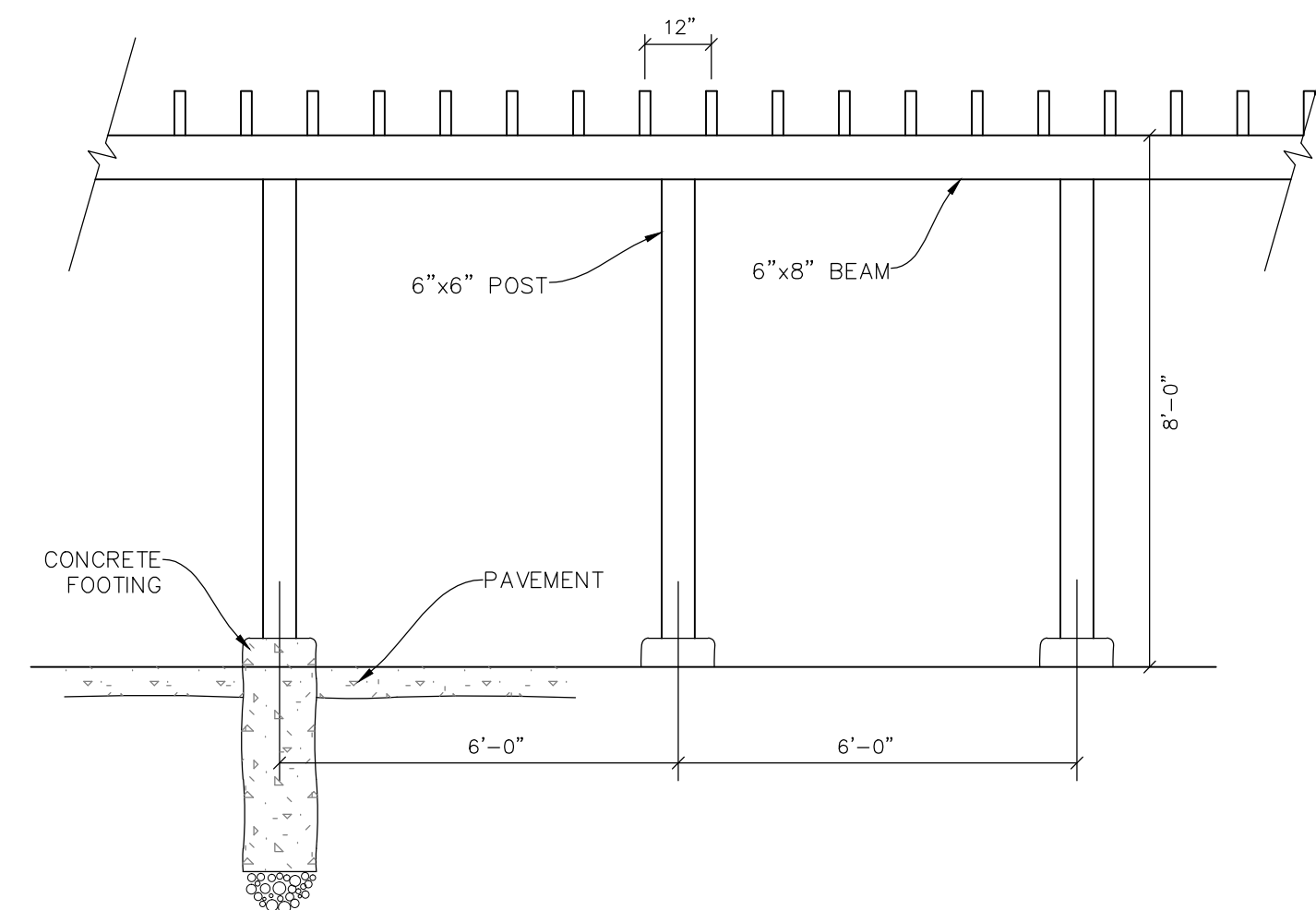
1" = 10' - 0"



Building Pergola Detail

Scale:

1" = 10' - 0"

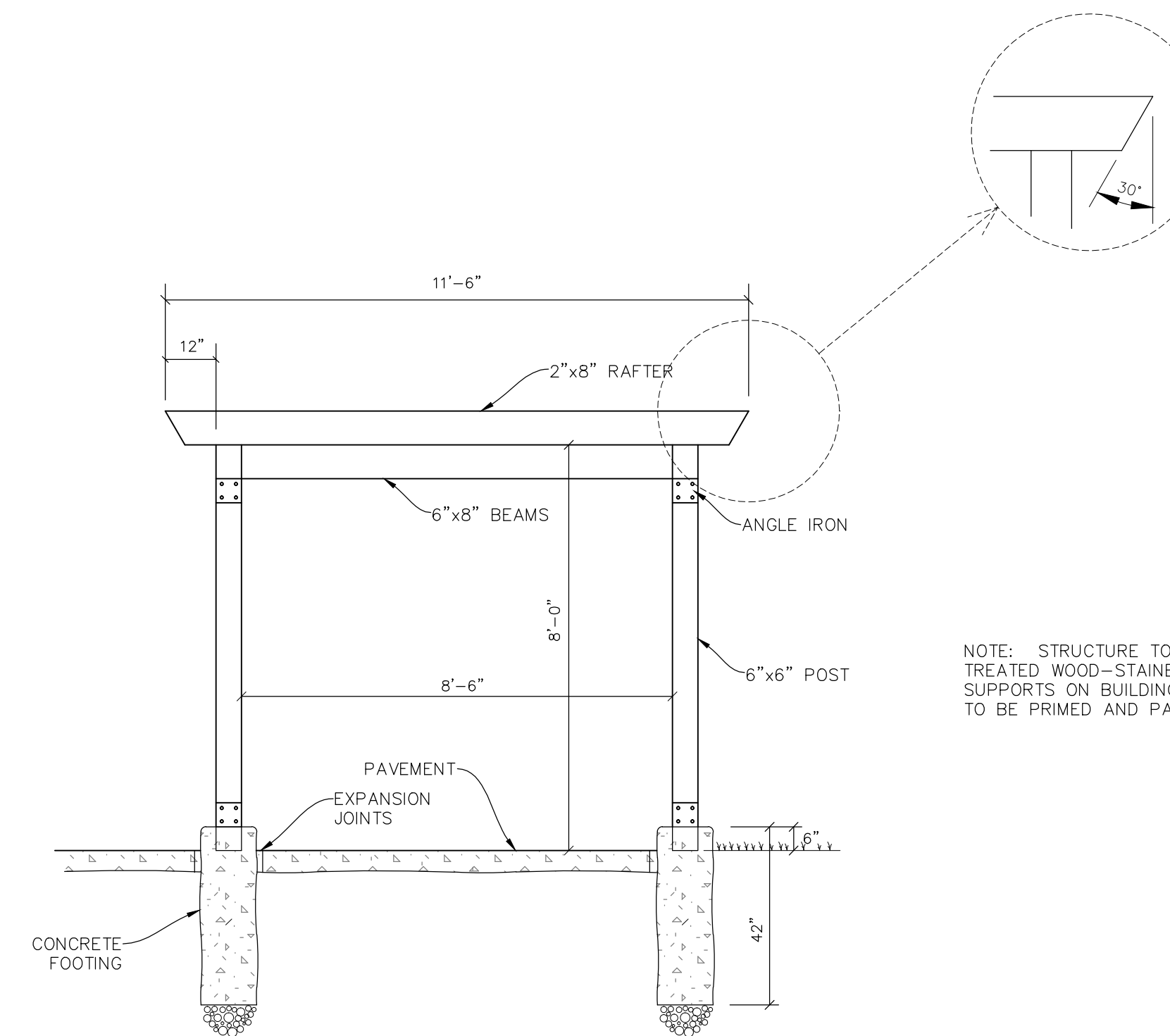


Pergola - Front View

Scale:

3/8" = 1' - 0"

NOTE: STRUCTURE TO BE PRESSURE TREATED WOOD--STAINED TO MATCH SUPPORTS ON BUILDING. ALL HARDWARE TO BE PRIMED AND PAINTED BLACK.



Pergola - Side View

Scale:

3/8" = 1' - 0"

NOTE: STRUCTURE TO BE PRESSURE TREATED WOOD--STAINED TO MATCH SUPPORTS ON BUILDING. ALL HARDWARE TO BE PRIMED AND PAINTED BLACK.

**BOARD APPROVED**

Case No: 2016-0862

Date: 04/27/2016

W/Out Conditions: X - Revised 8/15/17

VILLAGE OF ORLAND PARK

DATE	REVISIONS
4-19-16	REVISED PER VILLAGE COMMENTS
4-1-16	REVISED PER VILLAGE COMMENTS
4-1-16	REVISED PER VILLAGE COMMENTS

**Manhard CONSULTING LTD.**  
 880 Woodloch Parkway, Suite 100, Oak Brook, IL 60452  
 630.575.8888  
 Civil Engineers • Surveyors • Water Resource Engineers • Water & Wastewater Engineers • Environmental Scientists • Landscape Architects • Planners

HEARTIS ORLAND PARK - SENIOR LIVING  
 ORLAND PARK, ILLINOIS  
 FINAL LANDSCAPE PLAN DETAILS

PROJ. MGR.: JC  
 PROJ. ASSOC.: GMC1  
 DRAWN BY: JBD  
 DATE: 3-10-16  
 SCALE: N.T.S.  
 SHEET  
**L2 OF L3**  
 CAD0P101

