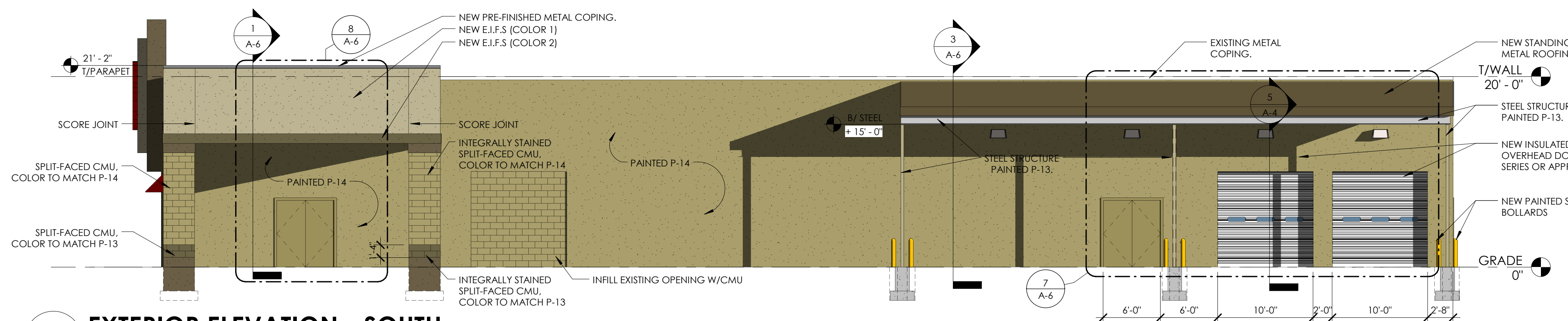


**ORLAND PARK PLAZA**

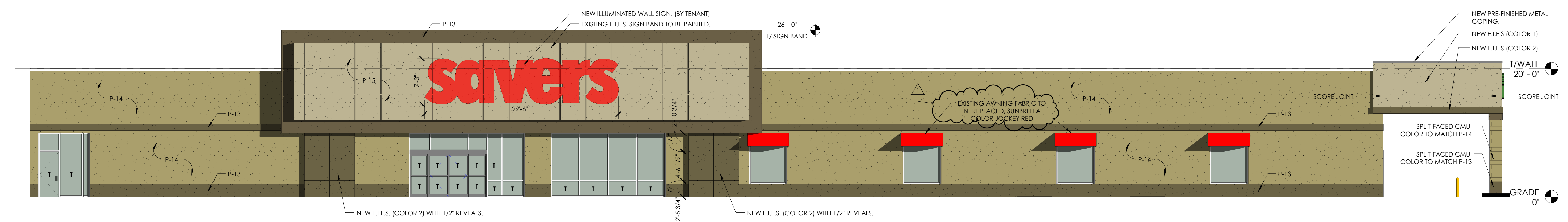
15601 94TH AVENUE  
ORLAND PARK, ILLINOIS

**EXTERIOR FINISHES**

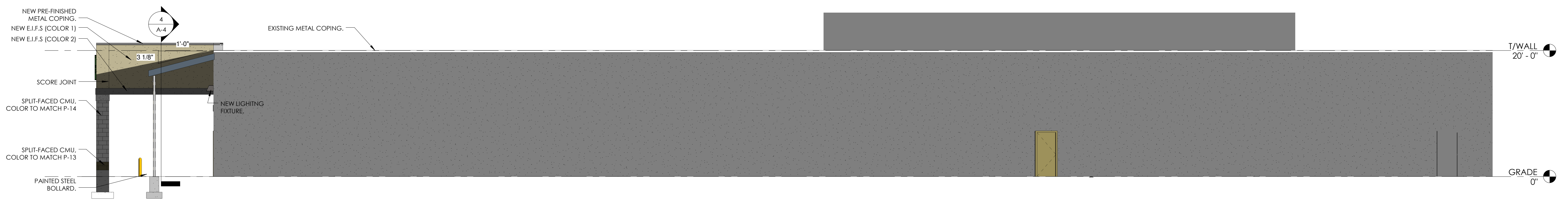
P#	Color Name	Match # or SW #
P13	BM AC-3 Texas Leather-Flat	8260-10184
P14	BM HC-28 Shelburne Buff-Flat	8260-10186
P15	BM 1074 Alpaca-Flat	8260-10185



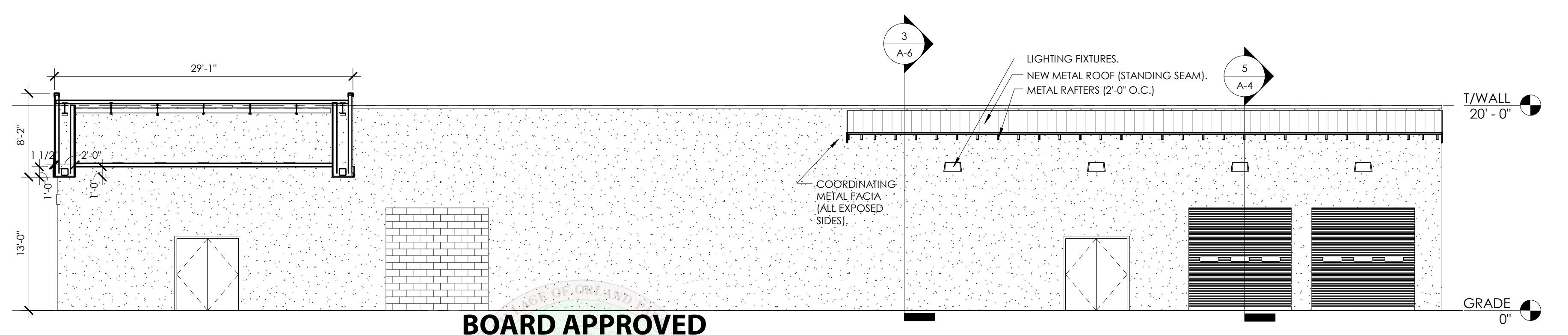
**1 EXTERIOR ELEVATION - SOUTH**  
1/8" = 1'-0"



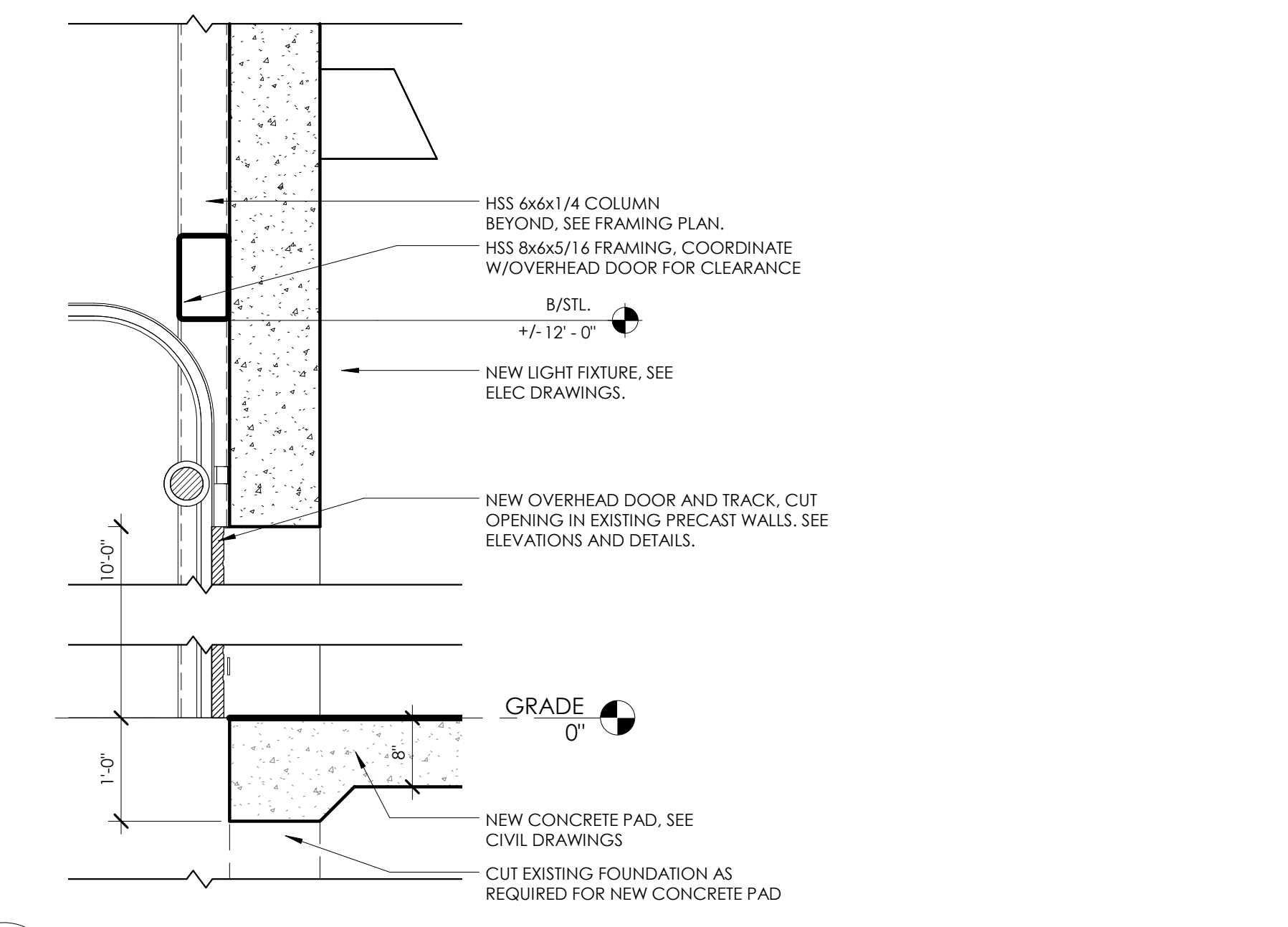
**2 EXTERIOR ELEVATION - WEST**  
1/8" = 1'-0"



**3 EXTERIOR ELEVATION - EAST**  
1/8" = 1'-0"



**4 CANOPIES SECTION**  
1/8" = 1'-0"



**5 OVERHEAD DOOR SECTION**  
3/4" = 1'-0"

**BOARD APPROVED**  
Case No: 2011-0745  
Date: 02.06.12  
W/Conditions: YES  
W/Out Conditions:  
VILLAGE OF ORLAND PARK

COPYRIGHT ©2011 Interwork Architects Incorporated  
This document is the property of Interwork Architects Incorporated and no part  
herein shall be used for any purpose without the written consent of Interwork  
Architects Incorporated.

No.	Description	Date
1	REVISED PER PLAN COMMISSION ISSUED FOR PERMIT	1.12.2012 12.6.2011

Project No: **1119.001.000**

Sheet Title:

**EXTERIOR ELEVATIONS**

Sheet No: