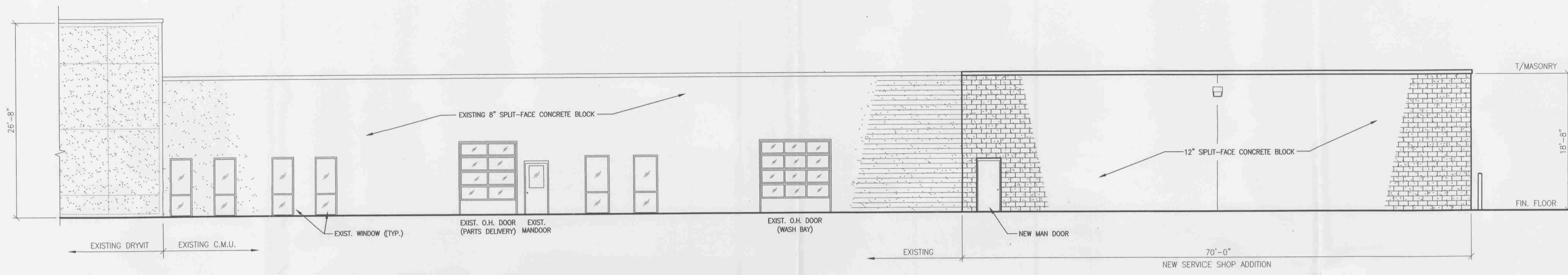


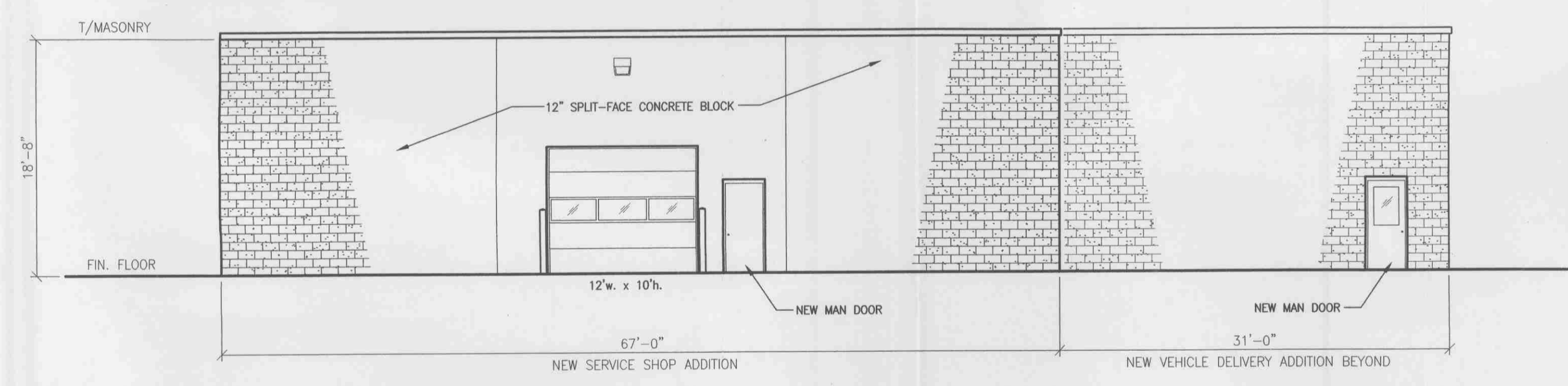
PARTIAL WEST ELEVATION

1/8" = 1'-0"
0' 4' 8' 16'



PARTIAL EAST ELEVATION

1/8" = 1'-0"
0' 4' 8' 16'



NORTH ELEVATION

1/8" = 1'-0"
0' 4' 8' 16'



Rev	Date	Description
B	5/26/07	SITE DEVELOPMENT REVIEW
C	10/11/07	REVISED PER PLAN COMMISSION COMMENTS

Project No.
27-002
Date
5/30/07

Sheet No.
A2.0