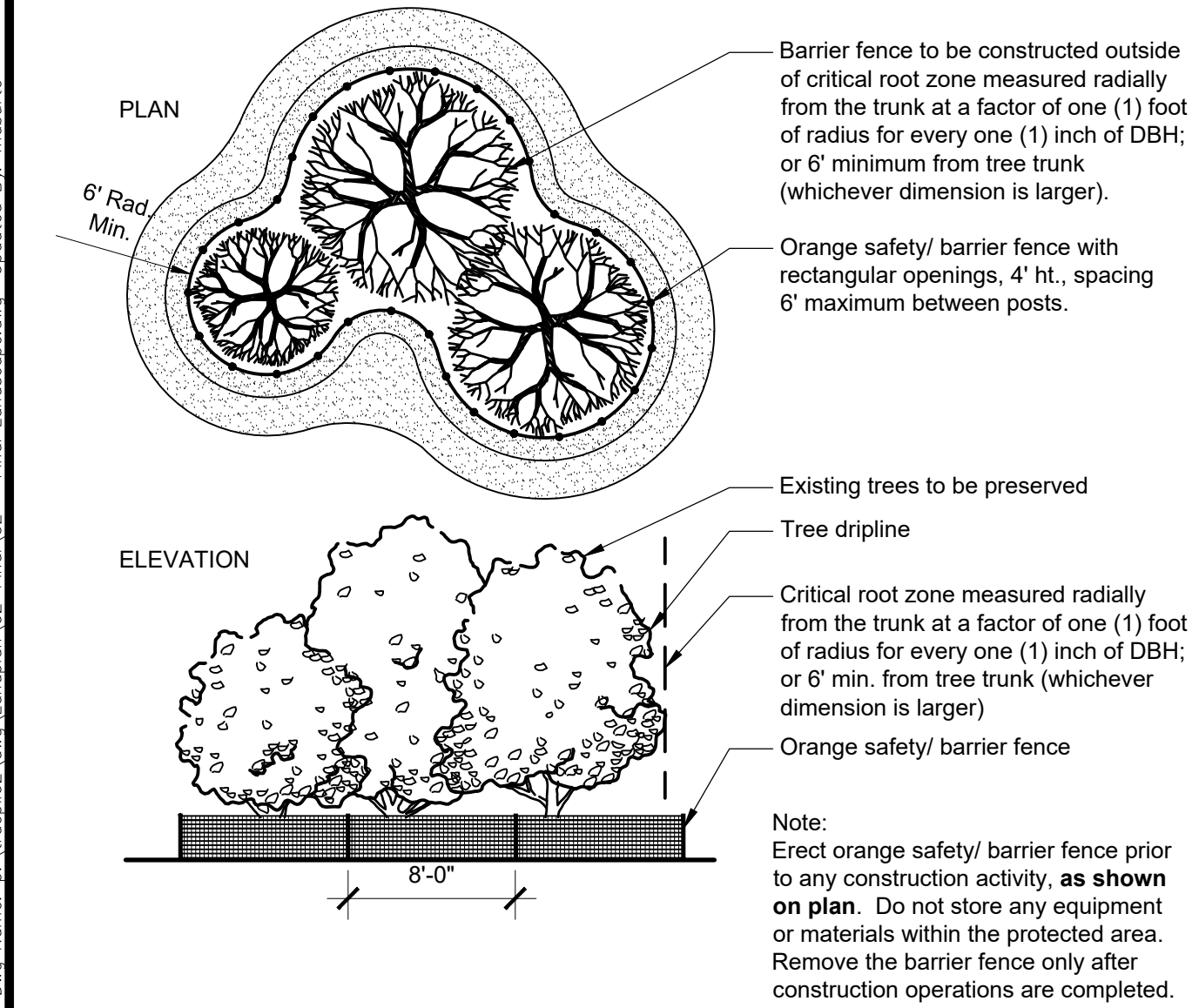
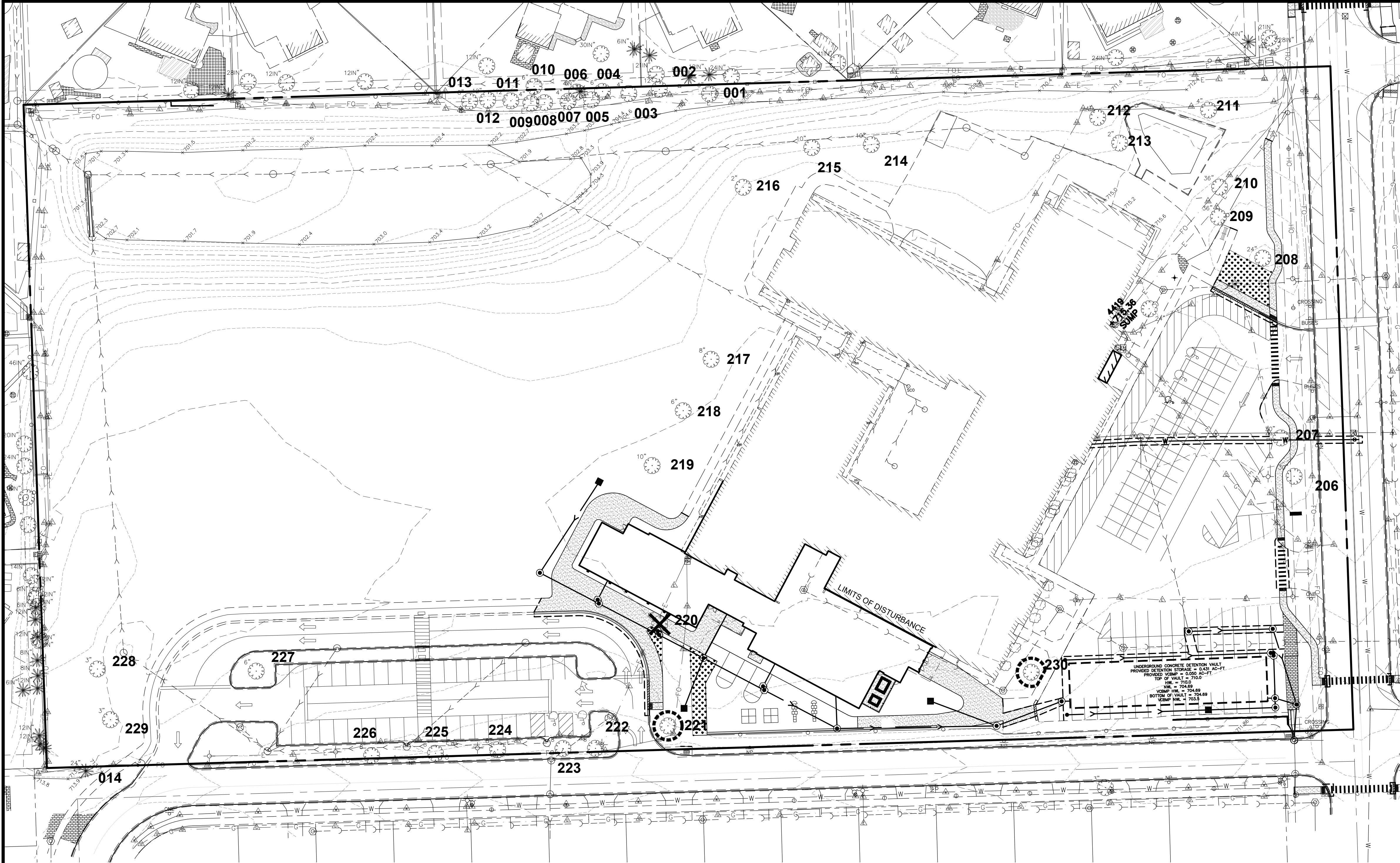
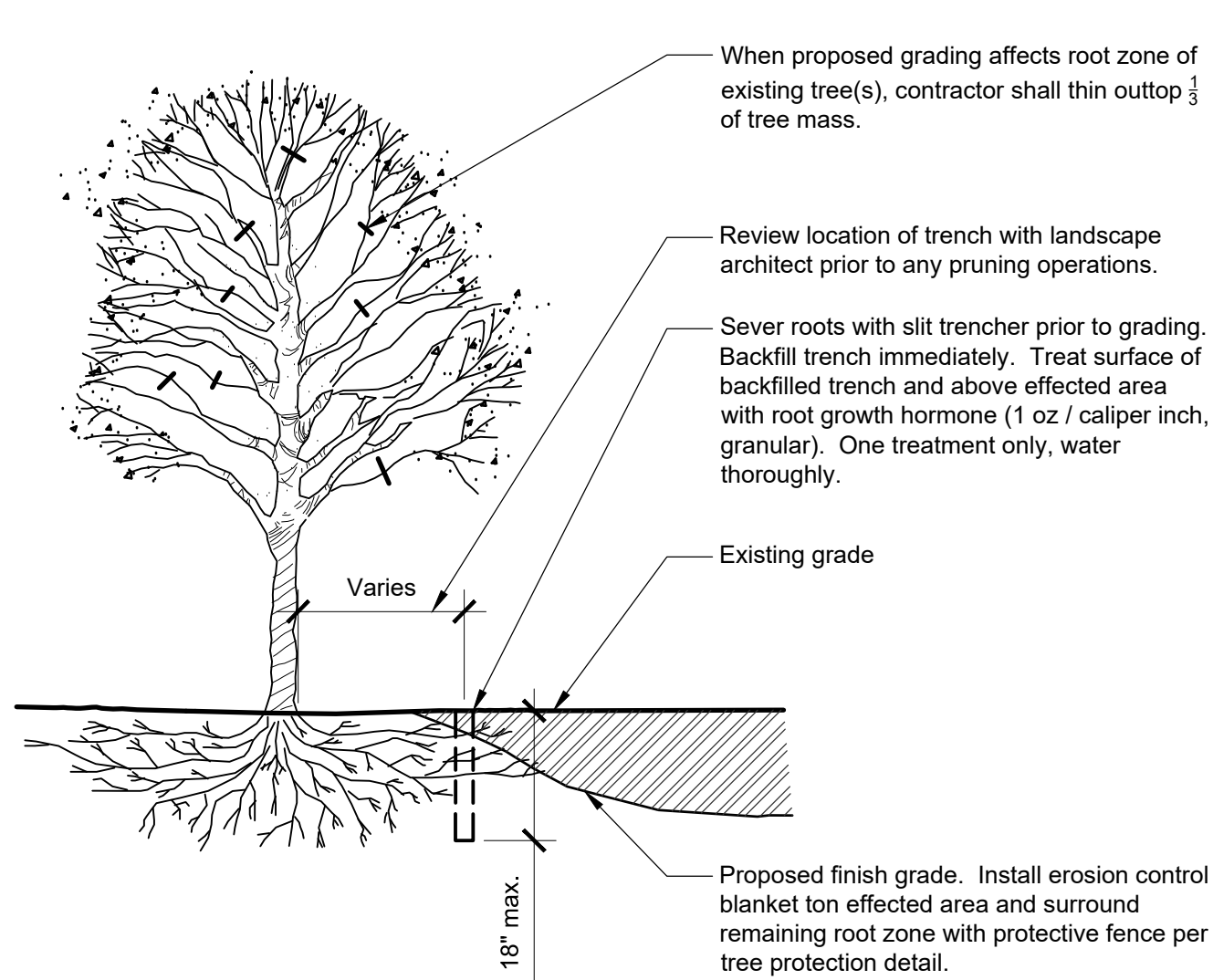


March 11, 2025 - 09:54 Data Name: c:\Users\j2\OneDrive\Documents\Final\02 - Final Landscape.dwg Updated By: msburto



1 TREE PROTECTION PLAN
N.T.S. 320190.33-01



2 GRADING NEAR EXISTING TREE TECHNIQUE
1/4" = 1'-0" 320190.33-02

Root Pruning

Existing tree roots greater than one (1) inch in diameter, measured at the edge of excavation, shall be pruned within 24 hours of the time they have been damaged by construction activity. The severed root shall be pruned at the edge of excavation, or one (1) inch beyond the entire damaged portion of the tree root, if damaged root extends beyond the edge of excavation into undisturbed soil.

All cuts shall be cleanly made with sharp tools.

The excavated area around the existing tree roots shall be backfilled as soon as construction activities permit.

Amended existing soil shall be used as backfill material within the disturbed root zone areas not receiving drainage or subbase stone items. Amended existing soil shall be amended with peat or compost in the ratio of one part organic to seven parts existing soil.

Vulnerable Area Protection Methods

All tree root zones designated as "Vulnerable" shall receive special care and attention during construction. These areas contain roots for large trees that are within the construction area. Since these trees have high value to the project, efforts shall be made to preserve these trees, however the property owner will not be held liable if the trees do not survive.

An arborist should be consulted prior to construction to provide advice on preservation techniques. Each tree and construction condition is unique so an arborist is best qualified to provide a recommendation for each tree. Preservations may include root pruning, crown pruning, hormone treatment, fertilizers, soil amendments, excavation techniques, etc.

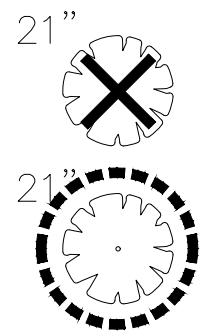
Removal and Mitigation

Tag	Species	DBH	Cond.	Status	Replacement Value
#206	Acer saccharinum	27"	Fair	Preserve	N/A
#207	Tilia americana	22"	Fair	Preserve	N/A
#208	Fraxinus americana	18"	Fair	Preserve	N/A
#209	Fraxinus americana	22"	Good	Preserve	N/A
#210	Gleditsia triacanthos	27"	Good	Preserve	N/A
#211	Acer freemanii	6"	Good	Preserve	N/A
#212	Acer platanoides	6"	Good	Preserve	N/A
#213	Acer freemanii	4"	Poor	Preserve	N/A
#214	Pyrus calleryana	6.6,3.3"	Poor	Preserve	N/A
#215	Acer platanoides	9"	Good	Preserve	N/A
#216	Acer freemanii	3"	Good	Preserve	N/A
#217	Acer platanoides	8"	Good	Preserve	N/A
#218	Acer platanoides	4"	Fair	Preserve	N/A
#219	Quercus bicolor	9"	Good	Preserve	N/A
#220	Acer freemanii	11"	Good	Remove	(2) 2.5" dbh
#221	Acer rubrum	9"	Good	Preserve	N/A
#222	Celtis occidentalis	7"	Good	Preserve	N/A
#223	Acer rubrum	7"	Good	Preserve	N/A
#224	Acer rubrum	7.4"	Fair	Preserve	N/A
#225	Acer freemanii	5.3,2.2"	Fair	Preserve	N/A
#226	Acer freemanii	8.5"	Good	Preserve	N/A
#227	Acer freemanii	8"	Good	Preserve	N/A
#228	Acer freemanii	8"	Good	Preserve	N/A
#229	Acer freemanii	7"	Good	Preserve	N/A
#230	Acer rubrum	4"	Good	Preserve	N/A
#231	Quercus bicolor	17"	Good	Preserve	N/A
#001	Pinus nigra	4", 8'ht	Fair	Preserve	N/A
#002	Picea pungens	12", 25'ht	Good	Preserve	N/A
#003	Thuja occidentalis	3", 4'ht	Good	Preserve	N/A
#004	Picea pungens	4", 8'ht	Good	Preserve	N/A
#005	Thuja occidentalis	3", 4'ht	Good	Preserve	N/A
#006	Picea pungens	4", 10'ht	Good	Preserve	N/A
#007	Thuja occidentalis	3", 4'ht	Good	Preserve	N/A
#008	Thuja occidentalis	3", 4'ht	Good	Preserve	N/A
#009	Thuja occidentalis	6", 8'ht	Good	Preserve	N/A
#010	Thuja occidentalis	3", 4'ht	Good	Preserve	N/A
#011	Picea abies	8", 30'ht	Good	Preserve	N/A
#012	Picea abies	8", 30'ht	Good	Preserve	N/A
#013	Picea abies	6", 25'ht	Good	Preserve	N/A
#014	Picea pungens	12", 35'ht	Good	Preserve	N/A

Total Replacement = Replace w/ (2) 2.5"

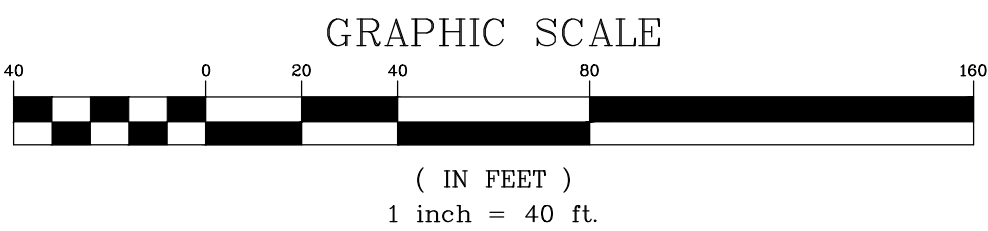
ON PLAN- Providing Two (2) 2.5" Cal. Replacement Trees on-site

Legend



Tree to be Removed

Protective Fencing for Tree to be Preserved



Manhard CONSULTING
1000 Wilshire Blvd., Suite 200, Los Angeles, CA 90017
Tel: 310.551.1111 Fax: 310.551.1112
www.manhardconsulting.com
Civil Engineers • Surveyors • Water Resource Engineers • Water & Wastewater Engineers
Construction Managers • Environmental Scientists • Landscape Architects • Planners

REVISIONS
DATE
DRAWN BY
MA
MA
MA

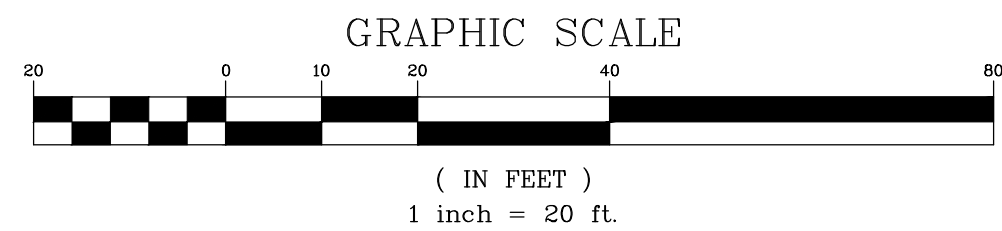
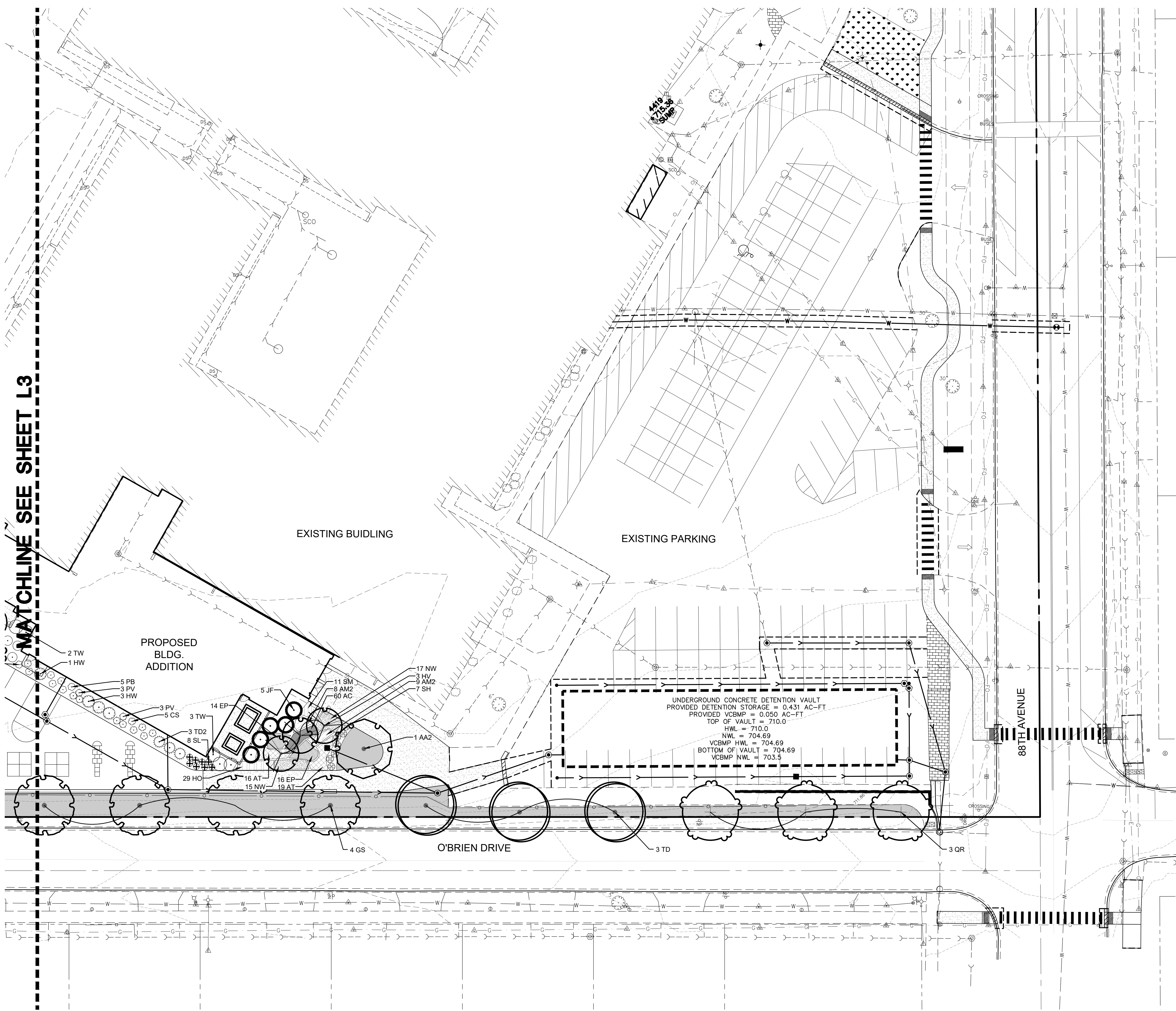
3/12/25 REVISED PER VILLAGE COMMENTS
3/3/25 REMOVED PER VILLAGE COMMENTS

PROJ. MGR.: MN
PROJ. ASSOC.: MUA
DRAWN BY: MA
DATE: 02/04/25
SCALE: 1" = 40'

SHEET
L1 OF L5
TRA.OPILO2

FERNWAY SCHOOL RENOVATIONS
ORLAND PARK
TREE PRESERVATION PLAN

March 11, 2025 - 09:54 Draw Name: c:\users\j2\OneDrive\Documents\2025\Final\2025 - Final Landscape.dwg Updated By: msabuto



PLANT SCHEDULE	
CODE	COMMON NAME
DECIDUOUS TREES	
AA2	Autumn Blaze® Freeman Maple
TD	Bald Cypress
AM	Green Mountain® Sugar Maple
QR	Red Oak
GS	Skyline Honey Locust
ORNAMENTAL TREES	
AX	Apple Serviceberry
HV	Common Witch Hazel
DECIDUOUS SHRUBS	
PB	Bella Bellissima™ Bush Cinquefoil
CA	New Jersey Tea
RR	Red Drift® Groundcover Rose
CS	Sugar Shack Buttonbush
HW	Wild Hydrangea
EVERGREEN SHRUBS	
TD2	Dense Anglo-Japanese Yew
JF	Sea Green Juniper
TT	Taunton's Anglo-Japanese Yew
TW	Woodward Arborvitae
ORNAMENTAL GRASSES	
CK	Karl Foerster Feather Reed Grass
SL	Little Bluestem
MM	Moorflamme Moor Grass
SH	Prairie Dropseed
PV	Switch Grass
PERENNIALS	
AT	Butterfly Milkweed
CJ	Jethro Tull Tickseed
SM	May Night Sage
AM2	Misty Lace Goatsbeard
EP	Pixie Meadowbrite® Purple Coneflower
HO	Stella de Oro Daylily
NW	Walker's Low Catmint
AC	Wild Ginger

PROJ. MGR.:	MN
PROJ. ASSOC.:	MUA
DRAWN BY:	MA
DATE:	02/04/25
SCALE:	1" = 20'
SHEET	
L2 OF L5	
TRA.OPILO2	

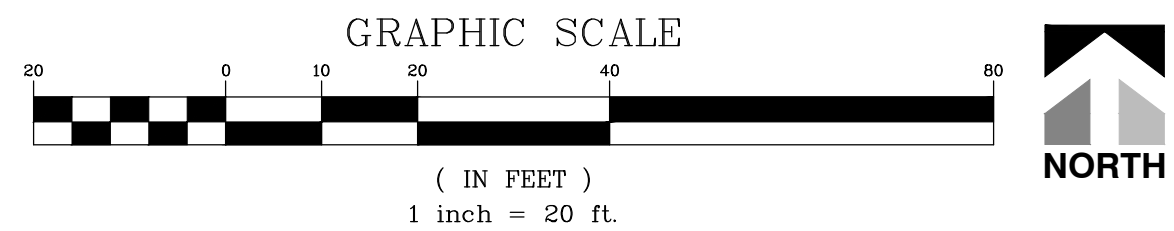
FERNWAY SCHOOL RENOVATIONS
ORLAND PARK
LANDSCAPE PLAN

Manhard CONSULTING

1500 West 10th Street, Suite 100, Lincoln, Nebraska 68502
402.441.1111
www.manhardconsulting.com

Landscaping • Site Planning • Surveying • Water Resource Engineers • Wetland & Wetwater Engineers • Civil Engineers • Construction Managers • Environmental Scientists • Landscape Architects • Planners

DATE	REVISIONS	REVISIONS PER VILLAGE COMMENTS	MA
3/12/25		REVISED PER VILLAGE COMMENTS	MA
3/3/25		REVISED PER VILLAGE COMMENTS	MA



TURF SEED/SOD

[illegible]

FERNWAY SCHOOL RENOVATIONS

ORLAND PARK

LANDSCAPE PLAN

PROJ. MGR.: MN
PROJ. ASSOC.: MUA
DRAWN BY: MA
DATE: 02/04/25
SCALE: 1"=20'

SHEET
L3 OF L5
TRA.OPIL02



