

KELLY GROVE II

LEGAL DESCRIPTION

BEING A RESUBDIVISION IN THE WEST HALF OF THE NORTHEAST QUARTER OF SECTION 9, TOWNSHIP 36 NORTH, RANGE 12 EAST OF THE THIRD PRINCIPAL MERIDIAN, IN COOK COUNTY, ILLINOIS.

W. 144th STREET

HERETOFORE DEDICATED

AVENUE

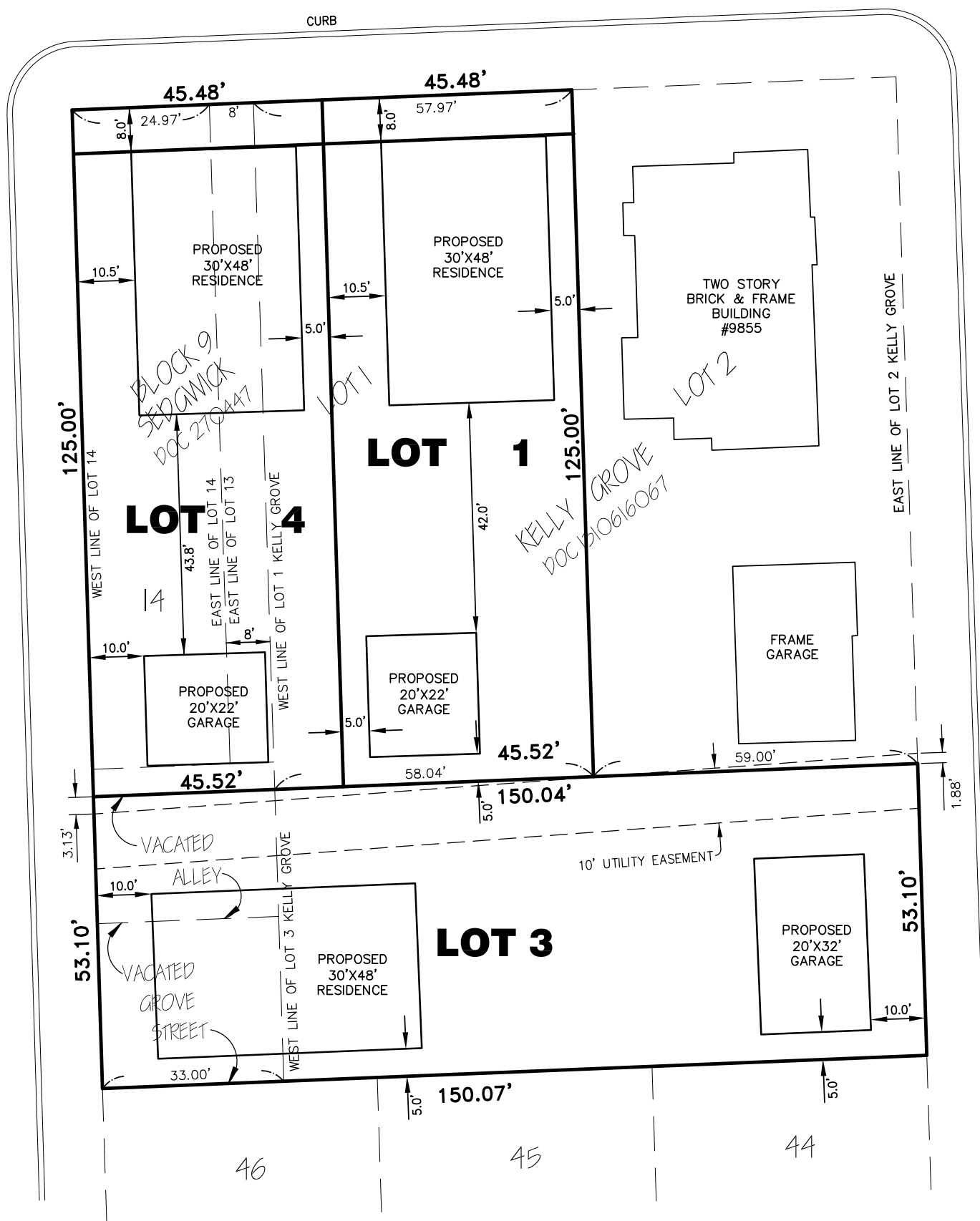
AVENUE

HERETOFORE DESIGNATED AS SECOND STREET

HERETOFORE DESIGNATED AS THIRD STREET

SECOND

THIRD



PREPARED FOR:

ULVERTON ENTERPRISES, INC.

PREPARED BY:

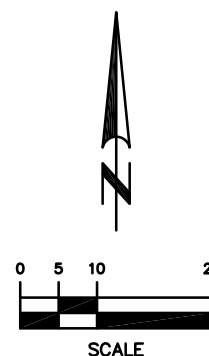
LANDMARK

ENGINEERING LLC

DESIGN FIRM REGISTRATION NO. 184-005577

7808 W. 103RD STREET
PALOS HILLS, ILLINOIS 60465-1529
Phone (708) 599-3737

PROJECT No. 15-01-028-R



DATED: MARCH 2, 2015