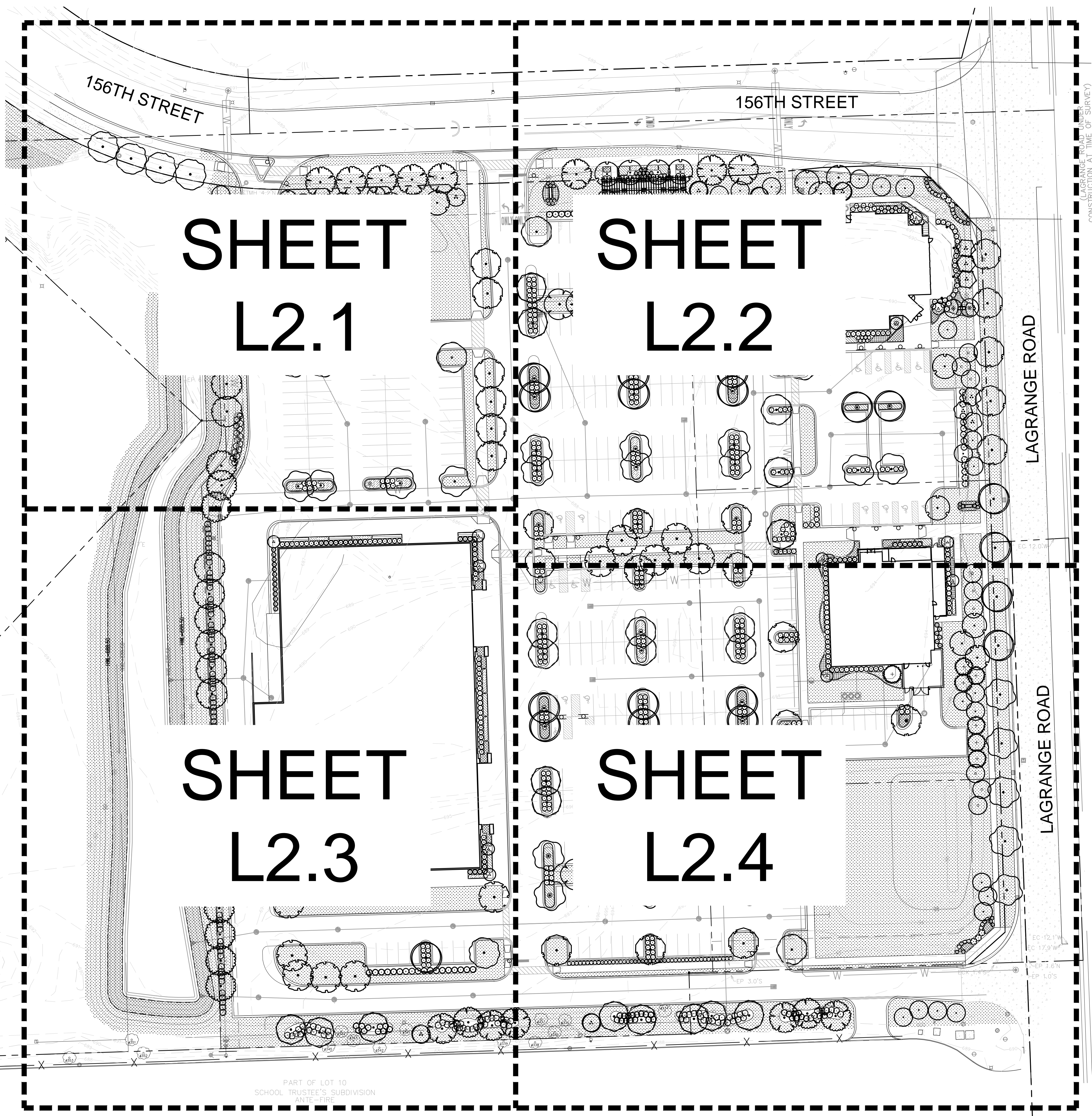
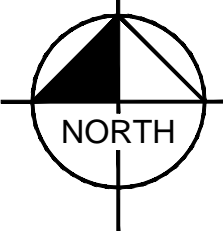
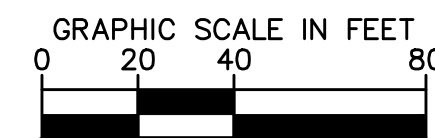
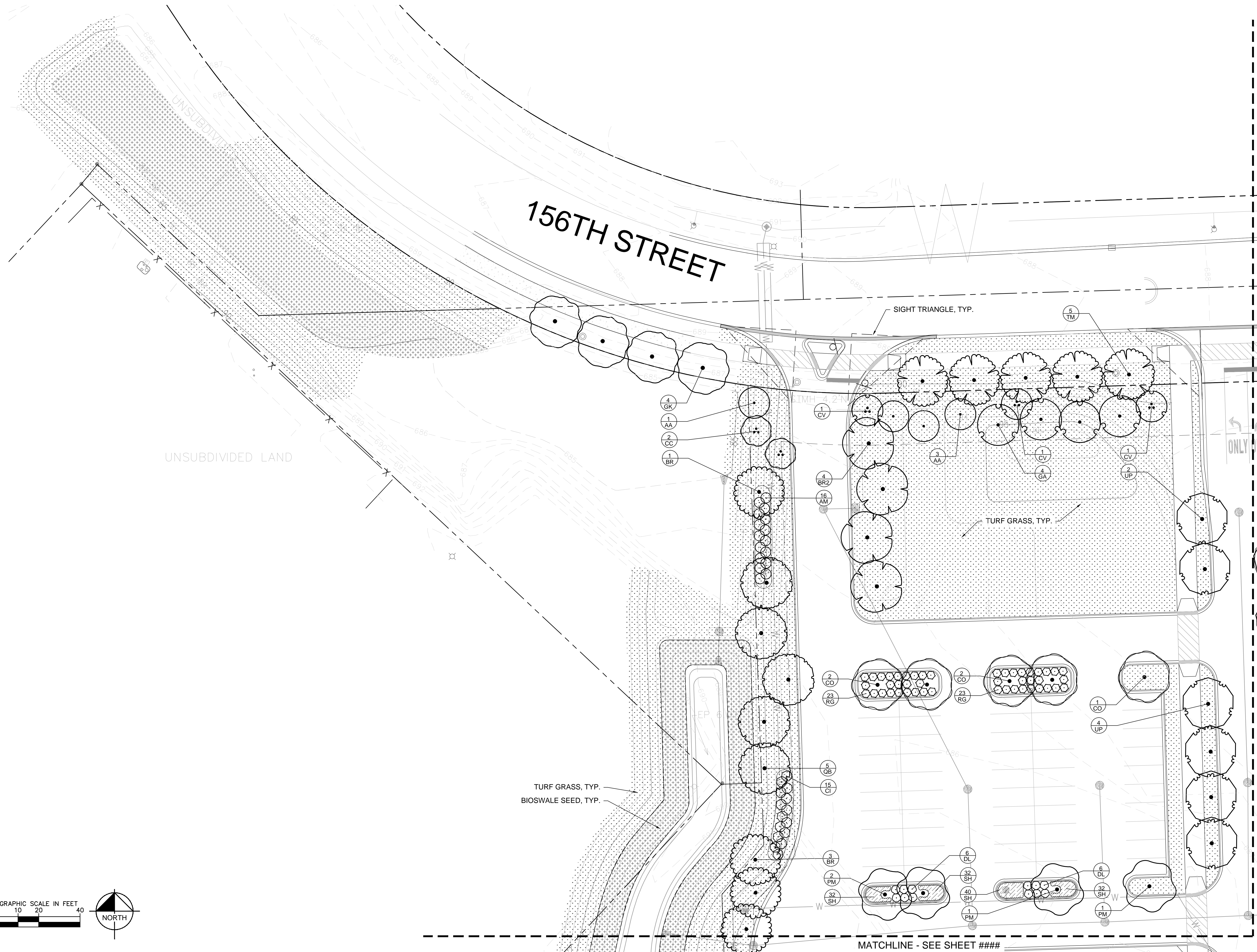
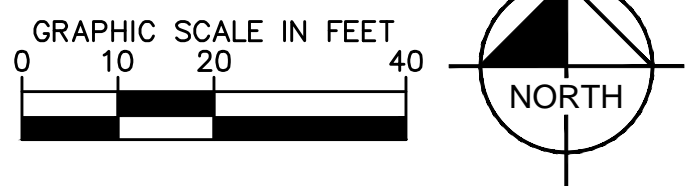


Drawing name: K:\GIS_LIVE\16849200_Location Finders International_156th St Retail\2 Design\CAD\PlanSheets\L2.0-LANDSCAPE PLANS.dwg L2.0 Aug 14, 2017 10:49am by: Tom Runkle
 This document, together with the concepts and designs presented herein, is intended only for the specific purpose and client for which it was prepared. Reuse of and improper reliance on this document without written authorization and adaptation by Kimley-Horn and Associates, Inc. shall be without liability to Kimley-Horn and Associates, Inc.



| | | | | | | | | |
|---|------------------------|--|---|--|---|----|----------|------------------------|
| RETAIL DEVELOPMENT 156TH STREET AND LAGRANGE ROAD ORLAND PARK, IL | OVERALL LANDSCAPE PLAN | | LOCATION FINDERS INTERNATIONAL 9440 ENTERPRISE DRIVE MOKENA, IL 60448 | SCALE: AS NOTED DESIGNED BY: TR DRAWN BY: TR CHECKED BY: RD | Kimley»Horn <small>© 2016 KIMLEY-HORN AND ASSOCIATES, INC. 1001 WARRENVILLE ROAD, SUITE 350, Lisle, IL 60532 WWW.KIMLEY-HORN.COM</small> | TR | 08/14/17 | FINAL LANDSCAPE PLAN |
| | L2.0 | | | | | TR | 05/19/17 | PER SITE PLAN REVISION |
| | | | | | | TR | 04/26/17 | PER VILLAGE COMMENTS |
| | | | | | | | | REVISIONS |
| | | | | | | | | DATE |
| | | | | | | | | BY |

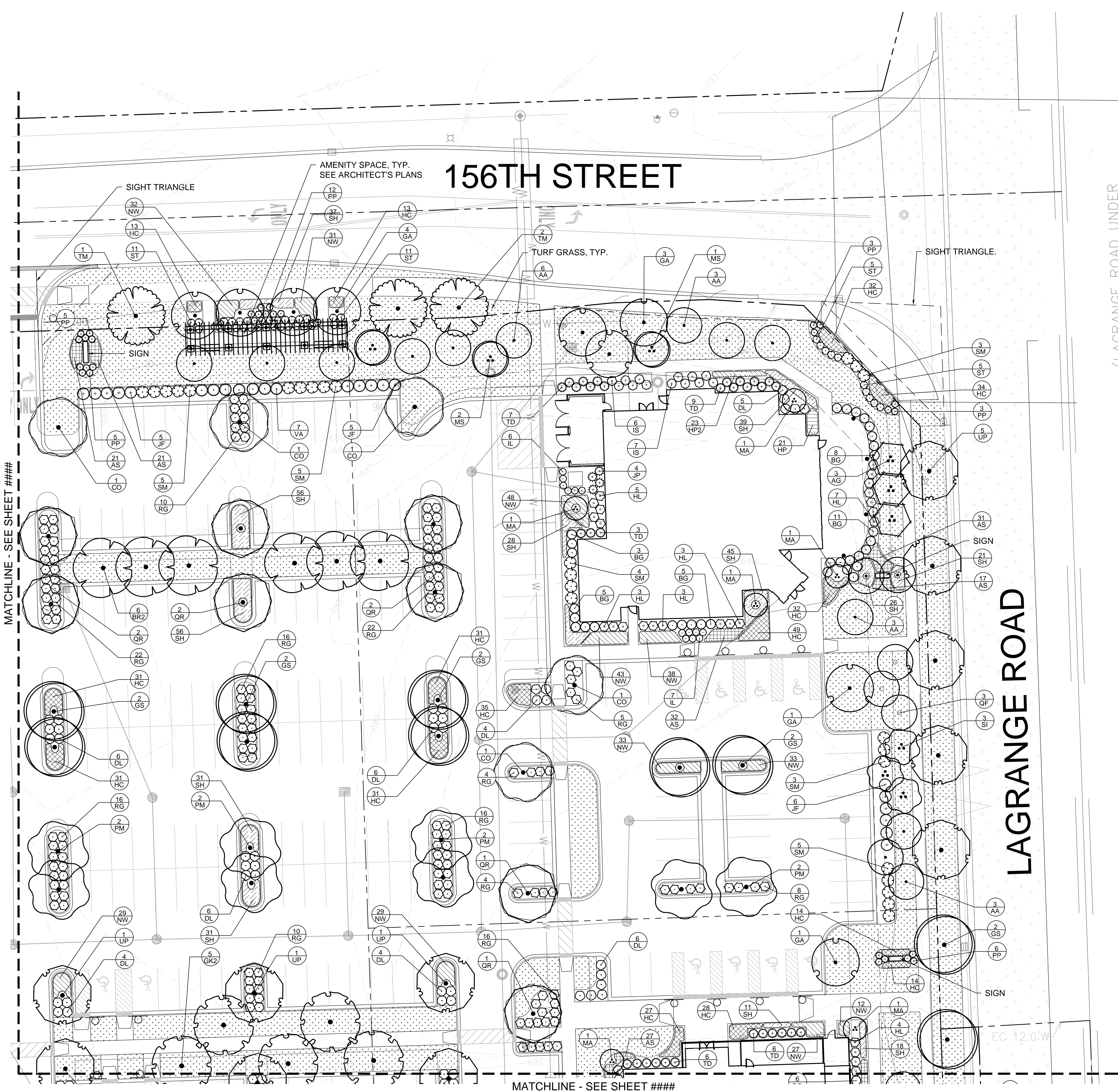
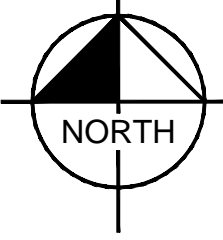
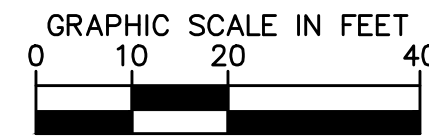
Drawing name: K:\GIS_LJEV\16849200_Location Finders International_156th St Retail\2 Design\CAD\PlanSheets\L2.0-LANDSCAPE PLANS.dwg L2.1 Aug 14, 2017 10:49am by: TomRunkle
 This document, together with the concepts and designs presented herein, is intended only for the specific purpose and client for which it was prepared. Reuse of and improper reliance on this document without written authorization and adaptation by Kimley-Horn and Associates, Inc. shall be without liability to Kimley-Horn and Associates, Inc.



MATCHLINE - SEE SHEET #####

MATCHLINE - SEE SHEET #####

| | | | | | | | | | |
|---|----------------|--------------|---|-------------------------------|--|--|-----|----------|----|
| RETAIL DEVELOPMENT 156TH STREET AND LAGRANGE ROAD ORLAND PARK, IL | LANDSCAPE PLAN | | LOCATION FINDERS INTERNATIONAL 9440 ENTERPRISE DRIVE MOKENA, IL 60448 | | SCALE: AS NOTED DESIGNED BY: TR DRAWN BY: TR CHECKED BY: KD | Kimley»Horn © 2016 KIMLEY-HORN AND ASSOCIATES, INC. 1001 WARENVILLE ROAD, SUITE 350, LISLE, IL 60532, 68569 WWW.KIMLEY-HORN.COM | NO. | DATE | BY |
| | L2.1 | SHEET NUMBER | KHA PROJECT NO. 168492000 | ORIGINAL ISSUE: 02/16/2017 | | | TR | 05/19/17 | TR |

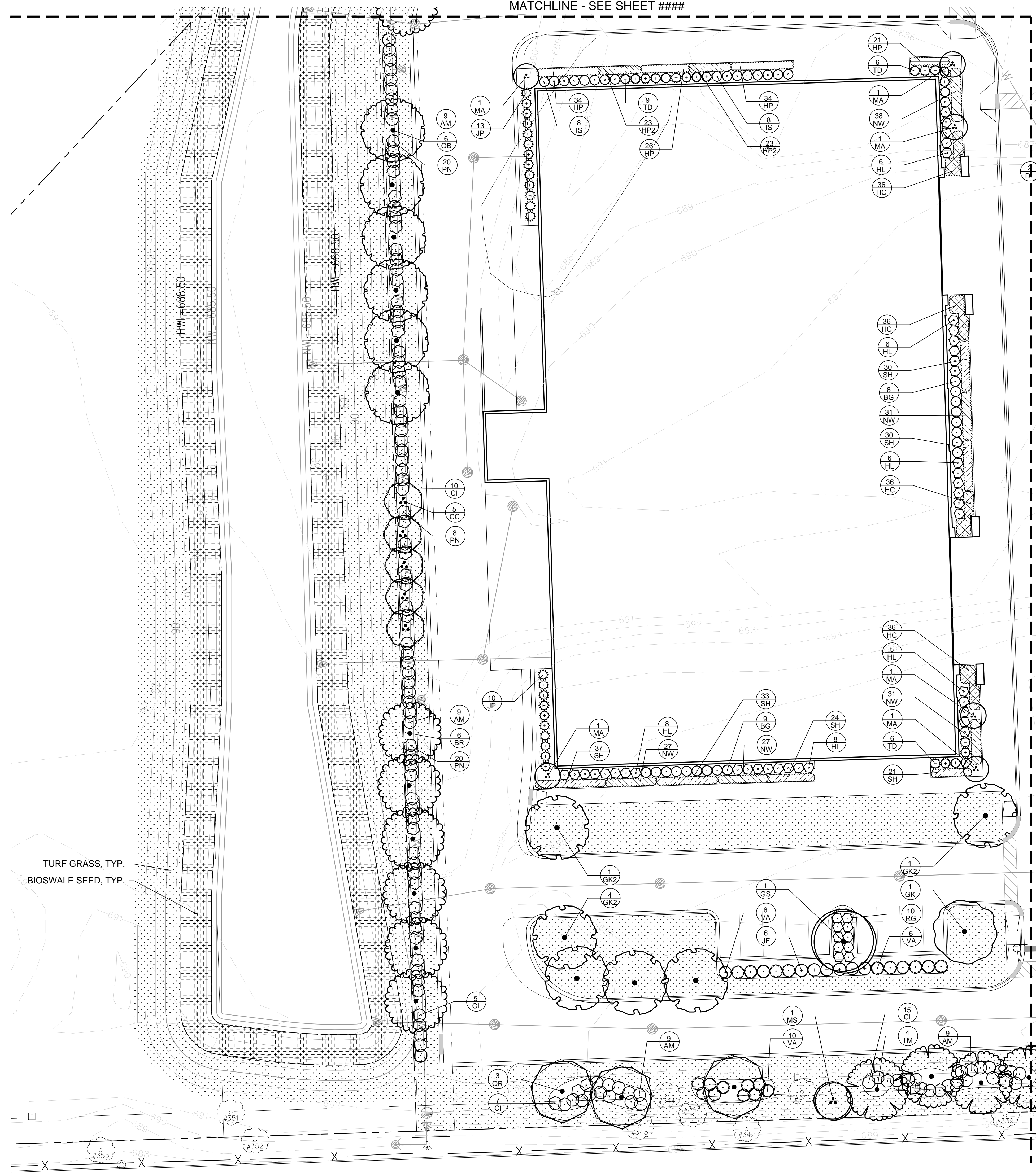
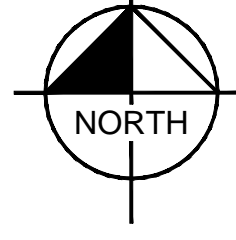
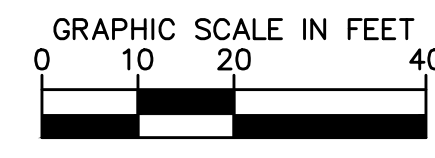


Drawing name: K:\GIS_LJEV\168492000_Location Finders International_156th St Retail\2 Design\CAD\PlanSheets\L2.0-LANDSCAPE PLANS.dwg L2.2 Aug 14, 2017 10:48am by: Tom Runkle
 This document, together with the concepts and designs presented herein, is intended only for the specific purpose and client for which it was prepared. Reuse of and improper reliance on this document without written authorization and adaptation by Kimley-Horn and Associates, Inc. shall be without liability to Kimley-Horn and Associates, Inc.

LAGRANGE ROAD UNDER

| | | | | | | |
|--|-----------------------|--|--|---|---|-------------|
| RETAIL DEVELOPMENT 156TH STREET AND LAGRANGE ROAD ORLAND PARK, IL | LANDSCAPE PLAN | LOCATION FINDERS INTERNATIONAL 9440 ENTERPRISE DRIVE MOKENA, IL 60448 | SCALE: AS NOTED DESIGNED BY: TR DRAWN BY: TR CHECKED BY: RD | Kimley»Horn <small>© 2016 KIMLEY-HORN AND ASSOCIATES, INC. 1001 WARRENVILLE ROAD, SUITE 350, Lisle, IL 60532 WWW.KIMLEY-HORN.COM</small> | NO. DATE TR TR TR TR DATE | |
| | | | ORIGINAL ISSUE: 02/16/2017 KHA PROJECT NO. 168492000 | FINAL LANDSCAPE PLAN PER SITE PLAN REVISION PER VILLAGE COMMENTS | REVISIONS | NO. DATE |
| | | | SHEET NUMBER L2.2 | REVISIONS | NO. DATE | |

Drawing name: K:\GIS_LIEV\168492000_Location Finders International_156th St Retail\2 Design\CAD\PlanSheets\L2.3-LANDSCAPE PLANS.dwg L2.3 Aug 14, 2017 10:49am by: Tom Runkle
This document, together with the concepts and designs presented herein, is an instrument of service, is intended only for the specific purpose and client for which it was prepared. Reuse of and improper reliance on this document without written authorization and adaptation by Kimley-Horn and Associates, Inc. shall be without liability to Kimley-Horn and Associates, Inc.

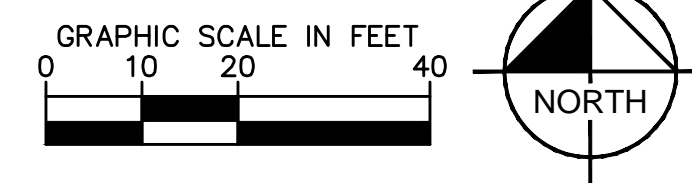
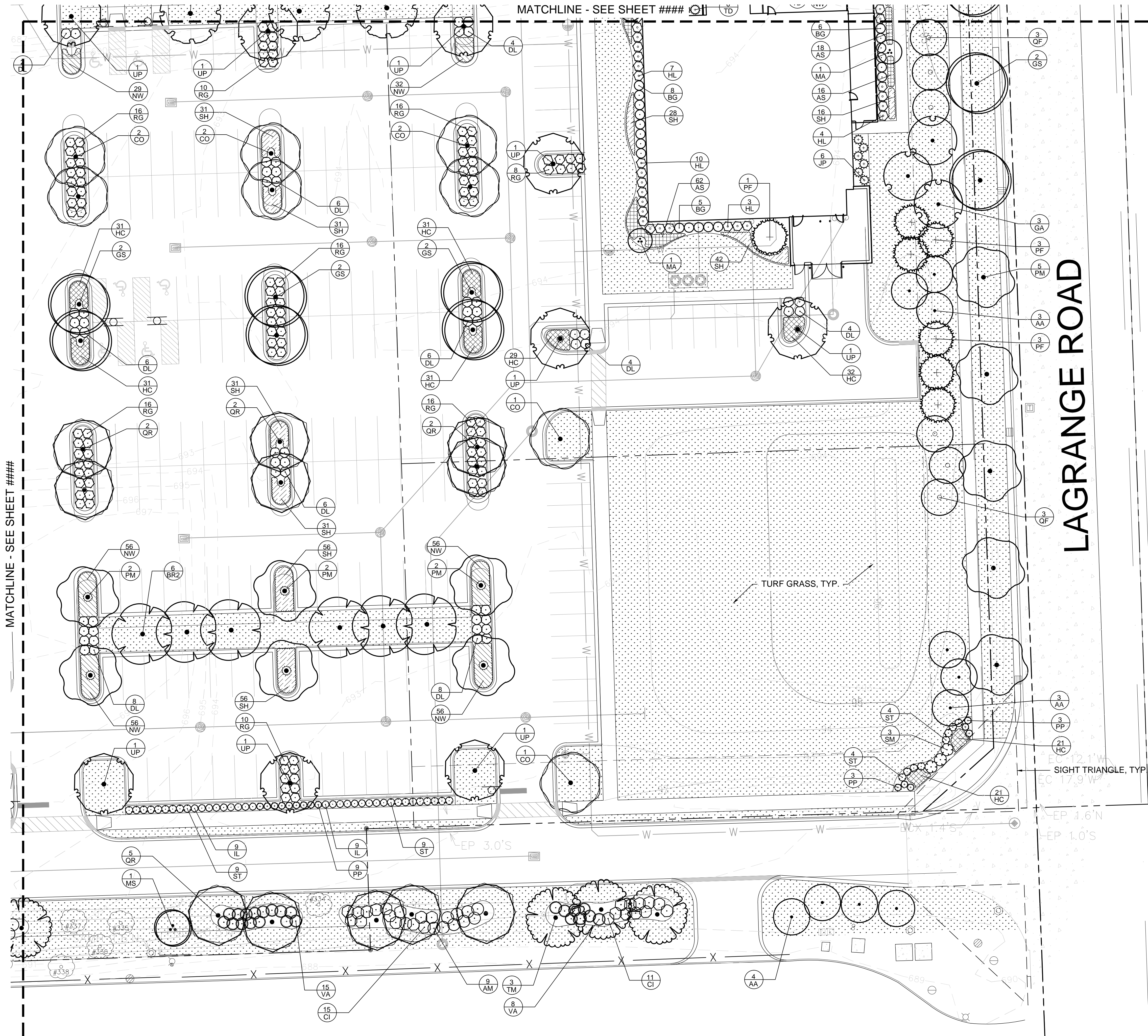


TURF GRASS, TYP.
BIOSWALE SEED, TYP.

MATCHLINE - SEE SHEET ###

| | | | | | | | | |
|---|--|---|--|---|--|------------------------|------|------|
| RETAIL DEVELOPMENT 156TH STREET AND LAGRANGE ROAD ORLAND PARK, IL | | LOCATION FINDERS INTERNATIONAL 9440 ENTERPRISE DRIVE MOKENA, IL 60448 | | © 2016 KIMLEY-HORN AND ASSOCIATES, INC. 1001 WARRENVILLE ROAD, SUITE 350, LISLE, IL 60532-4550 WWW.KIMLEY-HORN.COM | | No. | DATE | BY |
| ORIGINAL ISSUE: 02/16/2017 | | SCALE: AS NOTED | | DESIGNED BY: TR | | 08/14/17 | | TR |
| KHA PROJECT NO. 168492000 | | DRAWN BY: TR | | CHECKED BY: RD | | 05/19/17 | | TR |
| SHEET NUMBER L2.3 | | LANDSCAPE PLAN | | INTERNATIONAL | | PER SITE PLAN COMMENTS | | TR |
| | | | | | | 04/26/17 | | TR |
| | | | | | | | | DATE |
| | | | | | | | | BY |

Drawing name: K:\GHS_LJEV\16849200_Location Finders International_156th St Retail\2 Design\CAD\PlanSheets\L2.0-LANDSCAPE PLANS.dwg L2.4 Aug 14, 2017 10:49am by: Tom Runkle
 This document, together with the concepts and designs presented herein, is an instrument of service, is intended only for the specific purpose and client for which it was prepared. Reuse of and improper reliance on this document without written authorization and adaptation by Kimley-Horn and Associates, Inc. shall be without liability to Kimley-Horn and Associates, Inc.



LAGRANGE ROAD

| | | | | | |
|---|------------------------------|---|-----------------|---|----------|
| RETAIL DEVELOPMENT | | LOCATION FINDERS INTERNATIONAL | | Kimley»Horn | |
| 156TH STREET AND LAGRANGE ROAD ORLAND PARK, IL | | 9440 ENTERPRISE DRIVE MOKENA, IL 60448 | | © 2016 KIMLEY-HORN AND ASSOCIATES, INC. 1001 WARRENVILLE ROAD, SUITE 350, LISLE, IL 60532-4550 WWW.KIMLEY-HORN.COM | |
| ORIGINAL ISSUE: 02/16/2017 | KHA PROJECT NO. 168492000 | SCALE: AS NOTED | DESIGNED BY: TR | NO. | DATE |
| SHEET NUMBER L2.4 | | | DRAWN BY: TR | 08/14/17 | TR |
| | | | CHECKED BY: RD | PER SITE PLAN REVISION | 05/19/17 |
| | | | | PER VILLAGE COMMENTS | 04/26/17 |
| | | | | REVISIONS | |

Drawing name: K:\CHS_LBEV\16849200_Location Finders International_156th St Retail V2 Design\CAD\PlanSheets\L2.6-LANDSCAPE PLANS.dwg L2.6 Aug 14, 2017 10:49am by: TomRunkle
 This document, together with the concepts and designs presented herein, is an instrument of service. It is intended only for the specific purpose and client for which it was prepared. Reuse of and improper reliance on this document without written authorization and adaptation by Kimley-Horn and Associates, Inc. shall be without liability to Kimley-Horn and Associates, Inc.

LANDSCAPE NOTES

- THE LANDSCAPE CONTRACTOR SHALL BE RESPONSIBLE FOR INSTALLING MATERIALS AND PLANTS SHOWN ON THE LANDSCAPE PLAN. THE CONTRACTOR IS RESPONSIBLE FOR THE COST TO REPAIR UTILITIES, ADJACENT LANDSCAPE, PUBLIC AND PRIVATE PROPERTY THAT IS DAMAGED BY THE CONTRACTOR OR THEIR SUBCONTRACTOR'S OPERATIONS DURING INSTALLATION OR DURING THE SPECIFIED MAINTENANCE PERIOD. CALL FOR UTILITY LOCATIONS PRIOR TO ANY EXCAVATION.
- THE CONTRACTOR SHALL REPORT ANY DISCREPANCY IN PLAN VS. FIELD CONDITIONS IMMEDIATELY TO THE LANDSCAPE ARCHITECT, PRIOR TO CONTINUING WITH THAT PORTION OF WORK.
- THE CONTRACTOR SHALL BE RESPONSIBLE FOR THE REPAIR OF ANY OF THEIR TRENCHES OR EXCAVATIONS THAT SETTLE.
- ALL NURSERY STOCK SHALL BE WELL BRANCHED, HEALTHY, FULL, PRE-INOCULATED AND FERTILIZED. DECIDUOUS TREES SHALL BE FREE OF FRESH SCARS. TRUNKS WILL BE WRAPPED IF NECESSARY TO PREVENT SUN SCALD AND INSECT DAMAGE. THE LANDSCAPE CONTRACTOR SHALL REMOVE THE WRAP AT THE PROPER TIME AS A PART OF THIS CONTRACT.
- ALL NURSERY STOCK SHALL BE GUARANTEED, BY THE CONTRACTOR, FOR ONE YEAR FROM DATE OF FINAL INSPECTION.
- AMENDED SOIL SHALL BE PROVIDED AND GRADED BY THE GENERAL CONTRACTOR UP TO 6 INCHES BELOW FINISHED GRADE IN TURF AREAS AND 18 INCHES IN PLANTING AREAS.
- PLANTING AREA SOIL SHALL BE AMENDED WITH 25% SPHANGUM PEATMOSS, 5% HUMUS AND 65% PULVERIZED SOIL FOR ALL SHRUB, ORNAMENTAL GRASS, PERENNIAL AND ANNUAL BEDS. AMENDED TURF AREA SOIL SHALL BE STANDARD TOPSOIL.
- SEED LIMIT LINES ARE APPROXIMATE. CONTRACTOR SHALL SEED ALL AREAS WHICH ARE DISTURBED BY GRADING WITH THE SPECIFIED SEED MIXES.
- CONTRACTOR SHALL INSTALL SHREDDED HARDWOOD MULCH AT A 3" DEPTH TO ALL TREES, SHRUB, PERENNIAL, AND GROUNDCOVER AREAS. TREES PLACED IN AREA COVERED BY TURF SHALL RECEIVE A 4 FT WIDE MAXIMUM TREE RING WITH 3" DEPTH SHREDDED HARDWOOD MULCH. A SPADED BED EDGE SHALL SEPARATE MULCH BEDS FROM TURF OR SEEDED AREAS. A SPADED EDGE IS NOT REQUIRED ALONG CURBED EDGES.
- INSTALLATION OF TREES WITHIN PARKWAYS SHALL BE COORDINATED IN THE FIELD WITH LOCATIONS OF UNDERGROUND UTILITIES. TREES SHALL NOT BE LOCATED CLOSER THAN 5' FROM UNDERGROUND UTILITY LINES AND NO CLOSER THAN 10' FROM UTILITY STRUCTURES.
- DO NOT DISTURB THE EXISTING PAVING, LIGHTING, OR LANDSCAPING THAT EXISTS ADJACENT TO THE SITE UNLESS OTHERWISE NOTED ON PLAN.
- PLANT QUANTITIES SHOWN ARE FOR THE CONVENIENCE OF THE OWNER AND JURISDICTIONAL REVIEW AGENCIES. THE CONTRACTOR IS RESPONSIBLE FOR VERIFYING ALL PLANT QUANTITIES AS DRAWN.
- THE OWNER'S REPRESENTATIVE MAY REJECT ANY PLANT MATERIALS THAT ARE DISEASED, DEFORMED, OR OTHERWISE NOT EXHIBITING SUPERIOR QUALITY.

BIOSWALE NATIVE PLANTING NOTES

- ALL WORK DEEMED NATURAL AREA TO BE SEEDED OR PLANTED SHALL BE PERFORMED BY A NATURAL AREA CONTRACTOR WITH AT LEAST 5 YEARS OF DOCUMENTED EXPERIENCE IN SELECTIVE BRUSH CLEARING, PLANTING OF NATIVE SPECIES, AND NATURAL AREAS MANAGEMENT FOR THE PURPOSE OF ECOLOGICAL RESTORATION, AND SHALL BE ABLE TO DEMONSTRATE THERE KNOWLEDGE THROUGH REFERENCES AND IN THE FIELD.
- SEED LIMIT LINES ARE APPROXIMATE. THE NATURAL AREAS CONTRACTOR SHALL SEED ALL AREAS WHICH ARE DISTURBED BY GRADING WITH THE SPECIFIED SEED MIXES. SEED MIXES ARE TO BE SOURCED RESPECTIVELY THROUGH THE SPECIFIED COMPANY ON PLANS. REQUESTS FOR COMPARABLE SEED MIXES ARE TO BE APPROVED BY THE LANDSCAPE ARCHITECT.
- SEED SHALL BE OBTAINED FROM SOURCES SPECIALIZING IN NATIVE SPECIES. SEED AND PLANT STOCK SHALL BE SOURCED NO MORE THAN 350 MILES FROM THE JOB SITE.
- ALL SEED MIXES SHALL BE INSTALLED WITH A GRANULAR FORM OF ENDOMYCORRHIZAL INOCULUM PER THE SUPPLIERS SPECIFICATIONS. COVER CROP IS TO BE APPLIED TO ALL SEED MIXES CONSISTING ONLY OF AVENA SATIVA (SEED OATS) FOR SPRING INSTALLATIONS OR REGREEN (WHEAT HYBRID) FOR FALL PLANTINGS. NO OTHER COVER CROP IS TO BE USED ON SITE.
- STANDARD EROSION CONTROL BLANKET SHALL BE APPLIED TO ALL SEEDED AREAS WITH SINGLE TO DOUBLE NET STRAW AND DOUBLE NET STRAW/COCONUT BLANKET HYDROSEEDING IS UNACCEPTABLE.
- STEWARDSHIP OF THE NATURAL AREA SHALL BE CONDUCTED BY A NATURAL AREAS CONTRACTOR TO BEGIN IMMEDIATELY AFTER INSTALLATION FOR THREE YEARS.

BIOSWALE MINIMUM MAINTENANCE REQUIREMENTS

MAINTENANCE PROGRAMS SHALL BE SITE SPECIFIC AND COORDINATED WITH THE NATURAL AREAS CONTRACTOR AND VILLAGE OF ORLAND PARK FOR ADEQUATE MAINTENANCE PROCEDURES. A FIVE YEAR STEWARDSHIP PROGRAM IS RECOMMENDED FOR THE SITE WITH A MINIMUM THREE TO FIVE MAN CREW AND AT LEAST SIX VISITS PER YEAR. AFTER THE FIFTH GROWING SEASON MAINTENANCE PROGRAMS MAY BE REDUCED TO FOUR TO TWO VISITS PER YEAR DEPENDANT UPON SITE CONDITIONS WITH COORDINATING PRESCRIBED BURNS EVERY OTHER YEAR.

FIRST YEAR

- SPRING:
 -INSTALLATION PERFORMED IN THE SPRING REQUIRE 6-8 WEEKS OF THOROUGH TEMPORARY IRRIGATION TO MAINTAIN CONSISTENT SOIL MOISTURE.
 -CONDUCT MOWING AS SOON AS THE SEEDED AREA REACH 4-8 INCHES IN HEIGHT.
 SUMMER:
 -CONTROL INVASIVE WOODY AND HERBACEOUS FLORA THOROUGH PHYSICAL REMOVAL OR SPOT HERBICIDE TREATMENTS.
 -CONDUCT MOWING ATLEAST TWICE DURING THE GROWING SEASON, KEEPING NEWLY SEEDED AREAS 4-8 INCHES IN HEIGHT.
 FALL:
 -CONTROL INVASIVE WOODY AND HERBACEOUS FLORA THROUGH SPOT HERBICIDE TREATMENTS. IN AREAS LEFT BARE FROM HERBICIDE TREATMENT HAND SEED WITH THE RESPECTIVE SEED MIX.
 -CONDUCT MOWING ATLEAST TWICE, KEEPING THE SEEDED AREAS 8 INCHES IN HEIGHT.

SECOND YEAR

- SPRING:
 -HAND CUT OR MOW DEAD STALKS AND SEED HEADS FROM THE PREVIOUS GROWING SEASON.
 -CONTROL INVASIVE WOODY AND HERBACEOUS FLORA WITH ATLEAST ONE TO TWO SPOT HERBICIDE TREATMENTS.
 -PLANT SUPPLEMENTAL NATIVE SEED AND/OR LIVE PLUGS AT OWNERS DISCRETION TO INCREASE COMPETITION AND BIO-DIVERSITY.
 SUMMER:
 -DEAD HEAD OR MOW SPENT COVER CROP TO KEEP NEAT APPEARANCE AND REDUCE SELF-SEEDING.
 -CONDUCT MOWING ATLEAST TWICE DURING THE GROWING SEASON KEEPING VEGETATION AT 6-8 INCHES IN HEIGHT.
 FALL:
 -CONTROL INVASIVE WOODY AND HERBACEOUS FLORA WITH SPOT HERBICIDE TREATMENTS. IN AREAS LEFT BARE FROM HERBICIDE TREATMENT HAND SEED WITH THE RESPECTIVE SEED MIX.
 -CONDUCT MOWING ATLEAST TWICE, KEEPING THE SEEDED AREAS 8 INCHES IN HEIGHT.

THIRD YEAR

- SPRING:
 -CONDUCT A PRESCRIBED BURN TO DETER INVASIVE WOODY AND HERBACEOUS FLORA. IF A BURN IS NOT PLAUSIBLE CONTROL INVASIVE WOODY AND HERBACEOUS FLORA THROUGH PHYSICAL REMOVAL OR SPOT HERBICIDE TREATMENTS.
 SUMMER:
 -CONDUCT MOWING IF TARGETED INVASIVE WOODY SPECIES ARE PREVALENT.
 -CONTROL INVASIVE WOODY AND HERBACEOUS FLORA WITH ATLEAST ONE TO TWO SPOT HERBICIDE TREATMENTS.
 FALL:
 -CONDUCT A PRESCRIBED BURN IF A SPRING BURN WAS UNFEASIBLE.
 -CONTROL INVASIVE WOODY AND HERBACEOUS FLORA WITH ATLEAST ONE TO TWO SPOT HERBICIDE TREATMENTS.

FOURTH AND FIFTH YEAR

- SPRING:
 -CUT AND REMOVE DEAD STALKS AND SEED HEADS FROM PREVIOUS SEASON
 -CONTROL INVASIVE WOODY AND HERBACEOUS FLORA WITH AT LEAST ONE TO TWO SPOT HERBICIDE TREATMENTS.
 SUMMER:
 -CONDUCT MOWING IF TARGETED INVASIVE WOODY SPECIES ARE PREVALENT.
 -CONTROL INVASIVE WOODY AND HERBACEOUS FLORA WITH ATLEAST ONE TO TWO SPOT HERBICIDE TREATMENTS.
 FALL:
 -COLLECT SEEDS FROM NATIVE SPECIES TO DISPERSE IN MOWN OR HERBICIDE TREATED AREAS FOR THE FOLLOWING SPRING.

| MONTH | VISITS BY CREW | HERBICIDE | BRUSH CLEARING | MOW | COLLECT & DISPERSE | PRESCRIBED BURN | MONITORING |
|------------------|----------------|-----------|----------------|-----|--------------------|-----------------|------------|
| APRIL | 0-1 | X | X | | | X | |
| MAY | 1-2 | X | X | X | X | X | X |
| JULY | 1-2 | X | | X | X | | X |
| AUGUST | 1-2 | X | | X | | | X |
| SEPTEMBER | 0-1 | X | | X | | | X |
| OCTOBER | 1-2 | X | X | X | X | | X |
| NOVEMBER | 0-1 | X | X | | X | X | X |
| DECEMBER - MARCH | 0-1 | X | X | | X | X | |

| | | | | |
|--|--|--|----------|----|
| | | | 08/14/17 | TR |
| | | | 05/19/17 | TR |
| | | | 04/26/17 | TR |
| | | | DATE | BY |

| | | | |
|--|--|--|------------------------|
| | | | FINAL LANDSCAPE PLAN |
| | | | PER SITE PLAN REVISION |
| | | | PER VILLAGE COMMENTS |
| | | | REVISIONS |

| | |
|-----|--|
| No. | |
|-----|--|

Kimley»Horn
 © 2016 KIMLEY-HORN AND ASSOCIATES, INC.
 1001 WARENVILLE ROAD, SUITE 300,
 LISLE, IL 60532-4560
 WWW.KIMLEY-HORN.COM

| | |
|--------------|----------|
| SCALE: | AS NOTED |
| DESIGNED BY: | TR |
| DRAWN BY: | TR |
| CHECKED BY: | KD |

LOCATION FINDERS
 INTERNATIONAL
 9440 ENTERPRISE DRIVE
 MOKENA, IL 60448

LANDSCAPE NOTES

RETAIL DEVELOPMENT
 156TH STREET AND LAGRANGE ROAD
 ORLAND PARK, IL

ORIGINAL ISSUE:
 02/16/2017
 KHA PROJECT NO.
 168492000
 SHEET NUMBER

L2.6