

**PROPOSED
LANDSCAPE
PLAN**

ORLAND PARK
PRAYER CENTER
PARKING LOT
EXPANSION

IN
ORLAND PARK, IL

FOR:

ORLAND PARK
PRAYER CENTER
BOARD APPROVED

CASE NO. 2008-0755

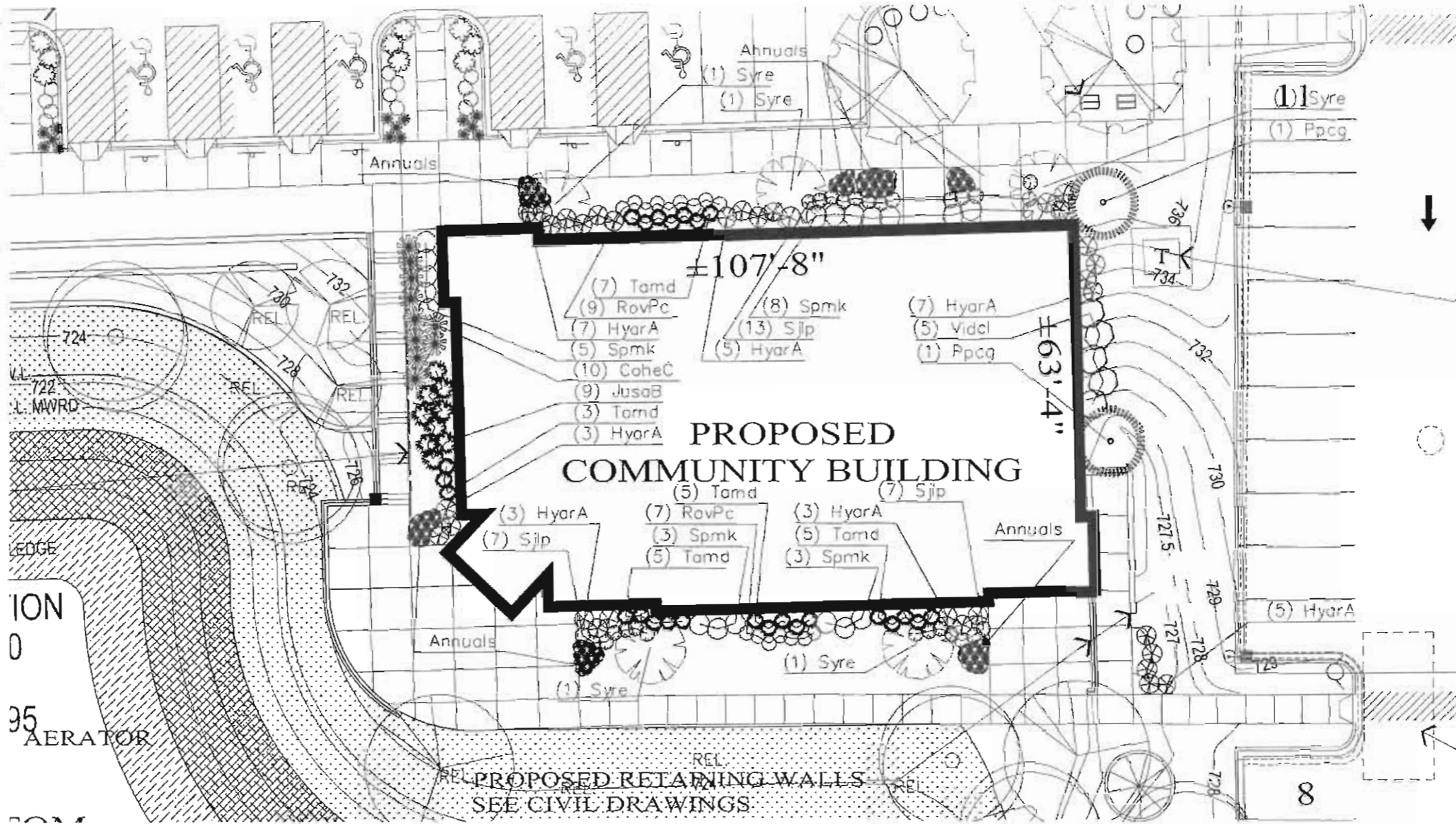
DATE 12-1-08

W/CONDITIONS

W/O CONDITIONS ✓

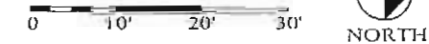
LP-2

JOB # 06152
ORIGIN: 01-30-07
REV. DATE: 08-26-08



**PROPOSED
COMMUNITY BUILDING**

PROPOSED LANDSCAPE PLAN
SCALE: 1" = 10'-0"



LANDSCAPE NOTES

- 1. ALL PLANT MATERIALS TO BE PLANTED IN ACCORDANCE WITH THE PLANT SCHEDULE AND SHALL BE PLANTED BY THE CONTRACTOR. THE CONTRACTOR SHALL BE RESPONSIBLE FOR PROVIDING AND INSTALLING ALL MATERIALS SHOWN IN THE PLAN AND SHALL NOT RELY ON THE PLANT SCHEDULE FOR DETERMINING QUANTITIES.
- 2. ALL PLANT MATERIALS SHALL BE HEALTHY, GROWN STOCK AND SHALL BE PLANTED FROM ANY CONTAINER OR POTTED PLANT. ANY PLANT MATERIALS WITH DAMAGED OR FROSTED/CORRUPTED LEAVES SHALL BE REJECTED. UNLESS OTHERWISE SPECIFIED, ALL PLANT MATERIALS SHALL BE PLANTED IN THE FOLLOWING MANNER: (1) ACCEPTABLE AND WILL BE REJECTED IF PLANTED WITH MULTIPLE LEAVES WILL BE REJECTED UNLESS SPECIFIED BY THE PLANT SCHEDULE.
- 3. ALL PLANTING OPERATIONS SHALL BE COMPLETED IN ACCORDANCE WITH STANDARD HORTICULTURAL PRACTICES. THIS MAY INCLUDE, BUT NOT BE LIMITED TO: PROPER PLANTING BED AND TREE PIT PREPARATION; PLANTING HOLE, PLANTING STAKES AND STAKING; WRAPPING; SPACING; HORTICULTURAL PLANTING AND ADEQUATE MAINTENANCE OF MATERIALS DURING CONSTRUCTION ACTIVITIES.
- 4. ALL PLANT MATERIALS SHALL BE INSPECTED AND APPROVED BY THE LANDSCAPE ARCHITECT PRIOR TO INSTALLATION. ANY MATERIALS INSTALLED WITHOUT APPROVAL MAY BE REJECTED.
- 5. THE CONTRACTOR SHALL GUARANTEE PLANT MATERIALS FOR A PERIOD OF ONE YEAR FROM DATE OF ACCEPTANCE BY OWNER. THE CONTRACTOR SHALL OBTAIN PROPER MAINTENANCE PROCEDURES TO USE DURING THE YEAR OF ACCEPTANCE. DURING THE GUARANTEE PERIOD, PLANT OR PLANTED MATERIALS SHALL BE REPLACED AT NO COST TO THE OWNER AT THE END OF THE GUARANTEE PERIOD; THE CONTRACTOR SHALL OBTAIN FROM THE OWNER AT THE END OF THE GUARANTEE PERIOD.
- 6. ANY EXISTING TREES TO BE REMOVED SHALL BE PROTECTED FROM SOIL COMPACTON AND OTHER DAMAGES THAT MAY OCCUR DURING CONSTRUCTION ACTIVITIES BY INSTALLING FENCING AROUND EACH MATERIAL AT A DISTANCE OF 6.5 FEET FROM THE TRUNK.
- 7. ALL GRASS, CLUMPS, OTHER VEGETATION, STONES, ETC., SHALL BE RIGIDLY OF WITHHELD/REMOVED FROM PLANTING AND LAWN AREAS PRIOR TO BEGINNING OF PLANTING OPERATIONS.
- 8. ANY AREAS TO BE LOST AND SEEDS WHICH HAVE NOT BEEN OBTAINED BY CONSTRUCTION ACTIVITIES SHALL BE REPLACED BY 2" OF LEAN OVER SCARPED EXISTING SOILS. CARE SHOULD BE GIVEN TO NOT PLACE GRASS OR SOIL OVER EXPOSED ROOTS OF EXISTING TREES IN SUCH AREAS.
- 9. THE CONTRACTOR SHALL VERIFY THE LOCATIONS OF ALL UNDERGROUND UTILITIES PRIOR TO BEGAINING PLANTING OPERATIONS. THE CONTRACTOR SHALL VERIFY THE LOCATION OF UTILITIES FROM PLANS, TAPPING, CLOSING, ETC. WHICH IS DAMAGED DURING PLANTING OPERATIONS.
- 10. SOIL AND EXISTING STANDARDS OF PLANT MATERIALS SHALL CONFORM TO THE LATEST EDITION OF ANY AND ALL AMERICAN STANDARDS FOR NURSERY STOCK, BY THE AMERICAN NURSERY & LANDSCAPE ASSOCIATION.
- 11. REFER TO PLANT OF SURVEY FOR LOCAL RESURFACING, BOUNDARY DIMENSIONS AND EXISTING CONDITIONS.
- 12. REFER TO ARCHITECTURAL PLANS FOR BUILDING MAINTENANCE, SIZE AND POSITION.
- 13. REFER TO ENGINEERING PLANS FOR DESIGNER CALCULATIONS, UTILITY LOCATIONS, TOPOGRAPHIC INFORMATION AND THE L.P.C.
- 14. PRELIMINARY LANDSCAPE PLAN AND DESIGN ARE APPROXIMATE.
- 15. ALL PLANT MATERIALS, ON THIS PLAN REPRESENT THE INTENTION AND INTENSITY OF THE PROPOSED LANDSCAPE MATERIAL, PRESENTED ON THIS PLAN. IF ADDITIONAL TOP SOIL IS REQUIRED TO BRING THE LANDSCAPE CONTRACTOR ON THE PROJECT TO PROPERLY SPREAD AND PREPARE THE SITE AS NEEDED FOR THE IMPLEMENTATION OF THIS LANDSCAPE PLAN.
- 16. CONTRACTORS MUST VERIFY ALL QUANTITIES AND OBTAIN ALL EXISTING PERMITS AND LICENSES FROM THE APPROPRIATE AGENCIES.
- 17. ALL MATERIALS MUST MEET RESISTOR STANDARDS AND THE LANDSCAPE ARCHITECT HAS THE RIGHT TO REUSE ANY OTHER MATERIAL, OR REVISIONS.
- 18. LANDSCAPE ARCHITECT IS NOT RESPONSIBLE FOR EXISTING SITE CONDITIONS.
- 19. ALL PLANTINGS SHALL BE SPACED SUFFICIENTLY TO BE PLANTED IN A HOLE. HOLE SIZE TO BE DETERMINED BY THE CONTRACTOR. MATERIALS, PLANTED, AND HAVE ALL HOLES AND HOLE REMOVED.
- 20. TREES SHALL BE STAKED AND GUYED, AND HAVE A WATERING SAUCER AT BASE.
- 21. ALL BEDS TO BE BERNED 1/2" TO 3/4" ABOVE GRADE AND MEET ORANGE REQUIREMENTS.
- 22. LAWN AND BED AREAS SHALL BE INSTALLED, RIGIDLY OF WITHHELD/REMOVED.
- 23. CONTRACTOR SELECTED FOR WATER PLANT INSTALLATION SHOULD HAVE A MINIMUM OF FIVE YEARS EXPERIENCE IN THE FIELD. SUPERVISOR SHOULD BE PRESENT ON ALL WORK. CONTRACTOR SHALL BE RESPONSIBLE FOR OBTAINING ALL NECESSARY PERMITS AND LICENSES FOR THE PROJECT.
- 24. ALL SEEDS SUPPLIED TO THE SITE SHOULD BE TREATED WITH SEED PROTECTANT, WEEDING AND CONTROL. SEEDS SHOULD BE TREATED WITH SEED PROTECTANT AND WEEDING CONTROL. SEEDS SHOULD BE TREATED WITH SEED PROTECTANT AND WEEDING CONTROL. SEEDS SHOULD BE TREATED WITH SEED PROTECTANT AND WEEDING CONTROL.
- 25. CONTRACTOR SHALL NOT BE USED IN AREAS OF WATER LANDSCAPING.
- 26. ALL NATIVE SEEDS AND PLANT MATERIAL SHALL BE OBTAINED FROM SOURCES WITHIN A 200 MILE RADIUS FROM THE SUBJECT SITE, TO MAINTAIN LOCAL ECOSYSTEMS.
- 27. PROPAGATING ON HYBRID SEEDING WILL BE USED FOR ALL SEEDING OF NATIVE PLANTING AREAS. (EXCEPTION: NATIVE SEEDS WILL BE USED ON SLOPES WITH A RATIO OF 4:1. FASSON CONTROL IS STRICTLY FORBIDDEN ON APPROXIMATELY 50% SLOPE. BRADSHAW SEEDING METHODS ARE USED ON THE GRASSES SHALL BE BRADSHAW SEEDING FROM THE FLOWERS).
- 28. WHEN BRADSHAW SEED APPLICATION METHODS ARE USED SEED IS TO BE APPLIED AT DOUBLE THE RECOMMENDED RATES (INCLUDING TEMPORARY MAINTY TREES).
- 29. IF AT THE TIME OF NATIVE AREA SEEDING WATER LEVELS CANNOT BE CONTROLLED, EMERGENCY PUMPING WILL BE INSTALLED AT A RATE OF 2.500 TO 4.000 PER ACRE GRASS ON THE AREA RAISED UP TO THE FEET OF INDIAN AT THE END OF THE 1:1% TO 1:1% AND WILL BE PROTECTED FROM HERBIVORY.
- 30. NATIVE AREA SEEDING SHALL OCCUR ANY TIME BETWEEN OCTOBER 15TH AND APRIL 15TH. PROPOSED SITE CONDITIONS APPLIED GOOD SOIL, SEED CONTACT AND REMOVAL SOIL SEEDING SHOULD OCCUR WITHIN ONE HOUR OF SEEDING. IF FERTILIZATION IS COMPLETED IN JUNE SEEDING ON WATER THE TERRAIN WITHIN ONE HOUR WILL BE INSTALLED. SEEDING IN JULY SHOULD BE INSTALLED IMMEDIATELY IF REGULAR WORKING IS PROCEEDED OR SEPARATE AT THE FIRST OPPORTUNITY, OTHERWISE.

Plant List

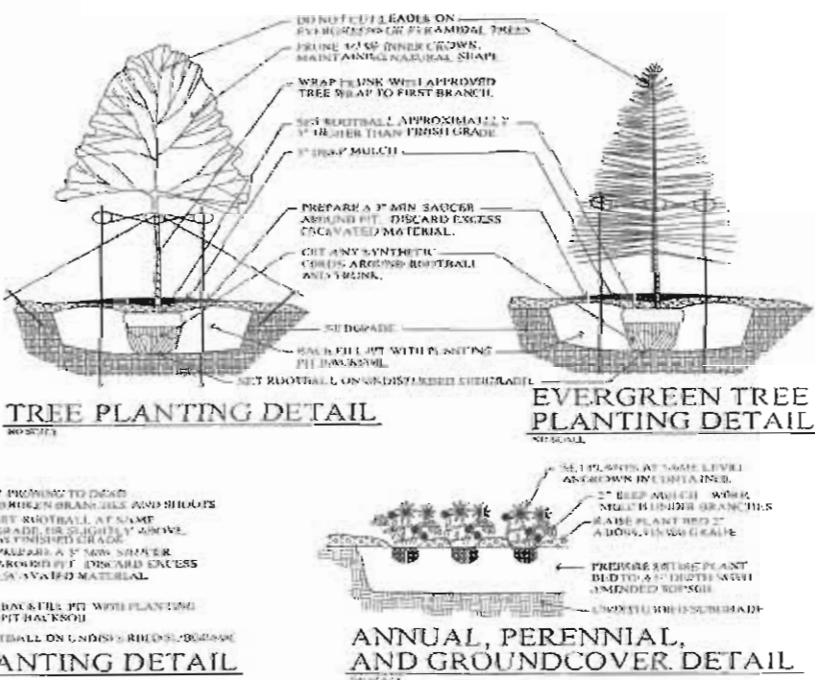
Code	Scientific Name	Common Name	Planting Size	Quantity
0101C	Andropogon scoparius	Bluestem Grass	24" - 30"	10
0101E	Andropogon scoparius	Bluestem Grass	24" - 30"	10
0101F	Andropogon scoparius	Bluestem Grass	24" - 30"	10
0101G	Andropogon scoparius	Bluestem Grass	24" - 30"	10
0101H	Andropogon scoparius	Bluestem Grass	24" - 30"	10
0101I	Andropogon scoparius	Bluestem Grass	24" - 30"	10
0101J	Andropogon scoparius	Bluestem Grass	24" - 30"	10
0101K	Andropogon scoparius	Bluestem Grass	24" - 30"	10
0101L	Andropogon scoparius	Bluestem Grass	24" - 30"	10
0101M	Andropogon scoparius	Bluestem Grass	24" - 30"	10
0101N	Andropogon scoparius	Bluestem Grass	24" - 30"	10
0101O	Andropogon scoparius	Bluestem Grass	24" - 30"	10
0101P	Andropogon scoparius	Bluestem Grass	24" - 30"	10
0101Q	Andropogon scoparius	Bluestem Grass	24" - 30"	10
0101R	Andropogon scoparius	Bluestem Grass	24" - 30"	10
0101S	Andropogon scoparius	Bluestem Grass	24" - 30"	10
0101T	Andropogon scoparius	Bluestem Grass	24" - 30"	10
0101U	Andropogon scoparius	Bluestem Grass	24" - 30"	10
0101V	Andropogon scoparius	Bluestem Grass	24" - 30"	10
0101W	Andropogon scoparius	Bluestem Grass	24" - 30"	10
0101X	Andropogon scoparius	Bluestem Grass	24" - 30"	10
0101Y	Andropogon scoparius	Bluestem Grass	24" - 30"	10
0101Z	Andropogon scoparius	Bluestem Grass	24" - 30"	10

Plant Legend

Symbol	Description
○	PREVIOUSLY PLANTED TREES TO BE RELOCATED ON SITE
○ (with cross)	EXISTING TREES TO REMAIN; DETAILS CAN BE FOUND ON PREVIOUSLY SUBMITTED TREE PRESERVATION PLAN

Herbivory Protection Detail: Shows a cross-section of soil and a protective barrier around a plant.

Shrub Planting Detail: Shows a cross-section of soil, mulch, and a shrub with a 3" deep mulch layer.



Tree Planting Detail

- DO NOT CUT LEAVES ON EVERGREENS OR PERENNIALS PRIOR TO PLANTING. REMOVE ONLY DROOPING BRANCHES.
- PREPARE A 3" MIN SAUCER AROUND PIT. DISCARD EXCESS COCAVATE MATERIAL.
- CUT ANY SYNTHETIC CORES, ARCHED BRIDGES, AND Y-STRUNG.
- SET ROOTBALL APPROXIMATELY 1/4" HIGHER THAN FINISH GRADE.
- 3" SHARP MULCH
- SET ROOTBALL ON UNDISTURBED EARTH/RAIL
- USE DRAINAGE
- DO NOT CUT LEAVES ON PERENNIALS PRIOR TO PLANTING. REMOVE ONLY DROOPING BRANCHES.
- PREPARE A 3" MIN SAUCER AROUND PIT. DISCARD EXCESS COCAVATE MATERIAL.
- CUT ANY SYNTHETIC CORES, ARCHED BRIDGES, AND Y-STRUNG.
- SET ROOTBALL ON UNDISTURBED EARTH/RAIL
- USE DRAINAGE
- DO NOT CUT LEAVES ON PERENNIALS PRIOR TO PLANTING. REMOVE ONLY DROOPING BRANCHES.
- PREPARE A 3" MIN SAUCER AROUND PIT. DISCARD EXCESS COCAVATE MATERIAL.
- CUT ANY SYNTHETIC CORES, ARCHED BRIDGES, AND Y-STRUNG.
- SET ROOTBALL ON UNDISTURBED EARTH/RAIL
- USE DRAINAGE