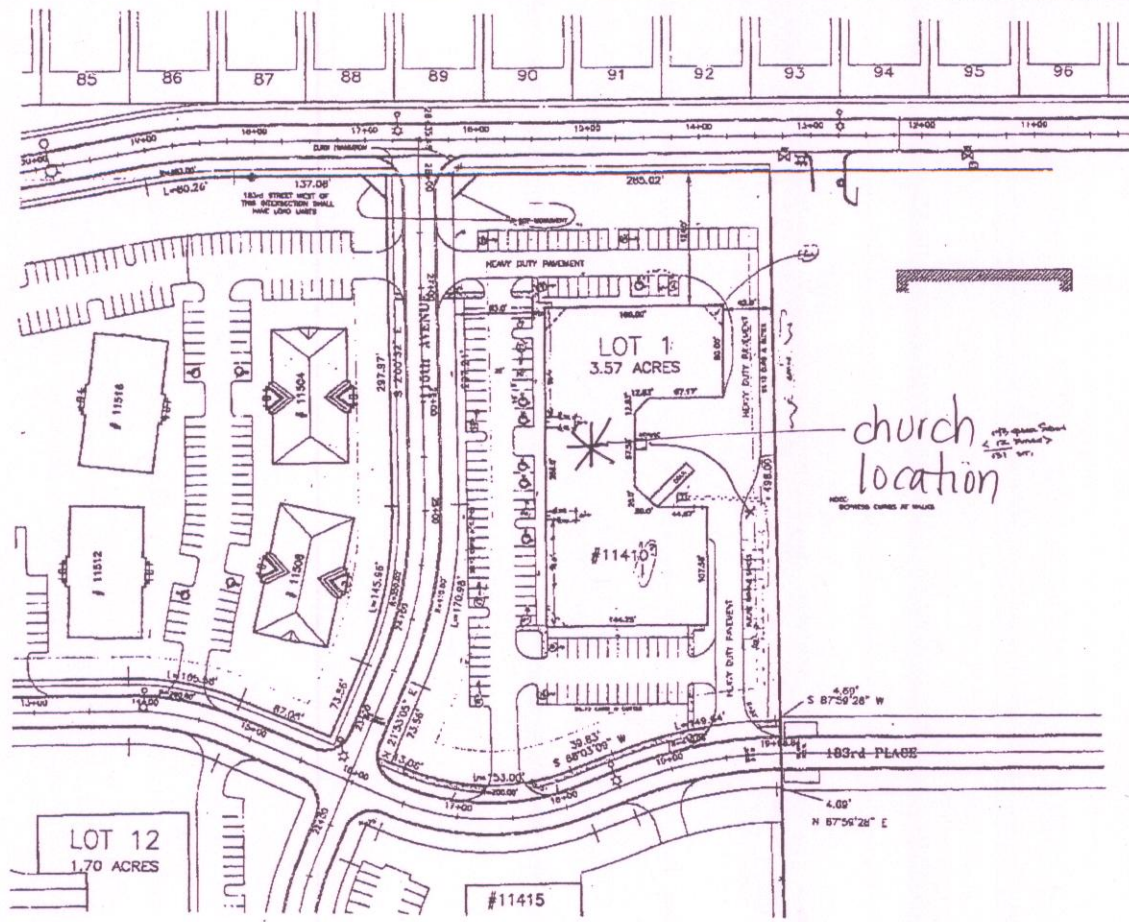


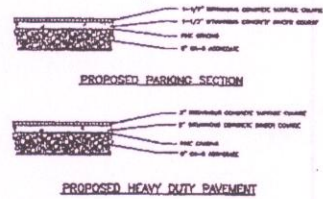
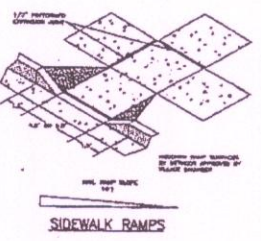
PRELIMINARY EXHIBIT "A"



NOTE:
 1. LIGHTING PLAN BY OTHERS.
 2. LANDSCAPING PLAN BY OTHERS.

11411

church location



BUILDER IS RESPONSIBLE FOR INCURING THAT CONTRACTOR IS IN CONFORMANCE WITH ALL ON SITE SPECIFICATIONS.



JOHN CHARLES
 JUL 13 2002

DATED: MAY 20, 2002		KDC CONSULTANTS INC. 18144 S. BELL ROAD LOOPPOUR, ELKHORN 80441 (708) 646-8848 FAX 646-0848
REVISION	DATE	
ORIGINAL	12/21/01	LOT 1 ORLAND PARK BUSINESS CENTER LOT GEOMETRY
VILLAGE COMMENTS	2/28/02	
		PROJECT 01-07-056 ENG
		2 PAGES OF 8