

Project Name:	Part Number:	Type:
---------------	--------------	-------

ENDEAVOUR

LINEAR HIGH BAY



407-478-3759
www.ilp-inc.com

FEATURES

- Sleek Curved Polycarbonate Injection Molded End Caps
- Aluminum Body with steel channel for added rigidity
- Toolless Hinged Driver Access
- Wide & Narrow Distributions
- Impact Resistant and IP5X Rated Lens Options:
 - Frosted Acrylic (FRL)
 - Frosted Polycarbonate (PFL) IK10 Impact Rated
- V-Clips for dual point chain or cable hanging (std.)
- Advanced and Basic Controls Options
- -40°F-131°F Ambient Temperature Range
- 3000K-5000K CCT
- Uplight Options
- >80 Color Rendering Index (CRI)
- Calculated L70 >100,000 hrs
- 0-10V Dimmable Driver (100%-10%)
- 120-277V Universal Voltage
- 5 Year Warranty
- ETL Listed for Damp Location
- DesignLights Consortium® Premium Qualified Luminaire



Fixtures shown with Frosted Lens (FRL)



SUITABLE APPLICATIONS

- Gymnasiums • Manufacturing Plants • Warehouses • Distribution Centers

ORDERING GUIDE:

SERIES	LUMENS	DRIVER	CCT	LENS OPTIONS		DISTRIBUTION		UPLIGHT		FINISH	
EDV Endeavour	8L	U 120-277V	50	BLANK	No Lens	BLANK	Wide	BLANK	No Uplight	BLANK	White
	12L		40	FRL	Frosted Acrylic Lens	ND	Narrow	UP/2L ^{1,2}	2000lm Uplight	BLK ^{1,9}	Black
	15L		35	PFL	Frosted Polycarbonate Lens			UP/4L ^{1,3}	4000lm Uplight	C ^{1,14}	Custom
	18L		30								
	24L										
	30L										
	36L										
	48L 60L										

OPTIONS		CONTROLS OPTIONS	
Factory Installed		Basic	
CORDx	Cord (x = ft)	FIOS ¹²	On/Off Occupancy Sensor
CORD/XFT/L7-15P	Cord (x=ft) with 277V 15amp Plug	FIOSPC ¹²	On/Off Occupancy Sensor w/ Photocell
QDCx	Quick Disconnect Cord (x = ft)	FIOSPC/DLH ¹²	On/Off Occupancy Sensor w/ Daylight Harvesting
GTD	Factory Installed Generator Transfer Device	DHPC ¹²	Daylight Harvesting
FI/ILBCP05	5W LED Factory Installed Battery Backup	USBD ¹²	User Bi-Level Dim Sensor w/ Occ. Sensor
FI/ILBCP05/HE	5W LED Factory Installed Battery Backup - CEC Title 20 Compliant	BDxx ¹²	Preset Bi-Level Dim Sensor (xx=%eg.20,30)
FI/ILBCP07	7W LED Factory Installed Battery Backup	BDxxPC ¹²	Preset Bi-level Dim Sensor w/ Photocell
FI/ILBCP07/HE	7W LED Factory Installed Battery Backup - CEC Title 20 Compliant		
FI/ILBCP10	10W LED Factory Installed Battery Backup		
FI/ILBCP10/HE	10W LED Factory Installed Battery Backup - CEC Title 20 Compliant		
FI/ILBCP12	12W LED Factory Installed Battery Backup		
FI/ILBCP20 ^{4,5}	20W LED Factory Installed Battery Backup - CEC Title 20 Compliant		
SD480	480V Step Down Transformer		
SD347	347V Step Down Transformer		
Ship With Accessories		Advanced	
WC ¹	11 GA Wire Cage	ES/HB ^{6,12}	EasySense High Bay Sensor
FMB/EDV	Fixture Mounting Box	FSP-211/L2 ^{10,13}	Legrand FSP-211 Sensor for 8' Mounting Height
HUB3/4	Conduit Hub ¾" for pendant mount	FSP-211/L3 ^{10,13}	Legrand FSP-211 Sensor for 20' Mounting Height
HOOK	Cast Iron Hook for single point mounting	FSP-211/L7 ^{10,13}	Legrand FSP-211 Sensor for 40' Mounting Height
HB-XX-18Y-PAD	Y-Toggle Cable System (xx = in)	FSP-311/L2 ¹³	Legrand FSP-311 Bluetooth Programming Sensor for 8' Mounting Height
SMZBKIT/EDV	Surface Mount Bracket	FSP-311/L3 ¹³	Legrand FSP-311 Bluetooth Programming Sensor for 20' Mounting Height
ES/PCD ⁷	EasySense Pre-Programmed Control Device	FSP-311/L7 ¹³	Legrand FSP-311 Bluetooth Programming Sensor for 40' Mounting Height
ES/IR ⁸	EasySense Commissioning IR Blaster	5S/CU/IL ¹³	Enlighted 5E Individual Lighting (IL) Sensor with Control Unit
ES/WWS/DR	EasySense Dual Rocker Wireless Wall Switch	5S/CU/CL ¹³	Enlighted 5E Connected Lighting (CL) Sensor with Control Unit
FSIR-100 ⁷	Programming tool for FSP-211 Sensor	5S/CU/IOT ¹³	Enlighted 5E Internet of Things (IOT) Sensor with Control Unit

¹ Does not qualify for DLC

² Available for EDV-8L-24L only

³ Available for EDV-30L-60L only

⁴ Cannot be used w/ FMB, HUB, or HOOK

⁵ Mounted externally to fixture

⁶ Must be used with ES/PCD and ES/IR options for commissioning

⁷ One needed per project

⁸ Must be used with ES/PCD

⁹ Reduces published performance by 16%

¹⁰ Must be used with FSIR for commissioning

¹¹ Only available with FRL

¹² Sensor Mounted off end cap of fixture

¹³ Sensor Mounted on center driver channel

¹⁴ Consult Factory

ENDEAVOUR

LINEAR HIGH BAY



QUICK SHIP ITEMS:

SERIES	LUMENS	DRIVER	CCT	PRIMARY LENS
EDV Endeavour	12L 18L 24L	U 120-277V	50 40	FRL* Frosted Acrylic Lens

* Stocked products only available with Frosted Lens (FRL)

SYSTEMS INFO ^{1,3}	3000K CCT		3500K CCT		4000K CCT		5000K CCT		Watts ²	CRI	Ambient Temp. Range	DLC	Replaces
	Part #	Lumens	Efficacy	Lumens	Efficacy	Lumens	Efficacy	Lumens					
EDV-8L-U-xx	7,368 lm	145 lm/W	7,634 lm	150 lm/W	7,900 lm	156 lm/W	8,433 lm	166 lm/W	51 W	>80	-40°F - 122°F	Premium	100W MH, 4T8
EDV-8L-U-xx-ND	7,310 lm	146 lm/W	7,574 lm	151 lm/W	7,838 lm	156 lm/W	8,366 lm	167 lm/W	50 W	>80	-40°F - 122°F	Premium	100W MH, 4T8
EDV-8L-U-xx-FRL	7,019 lm	139 lm/W	7,273 lm	144 lm/W	7,527 lm	149 lm/W	8,034 lm	159 lm/W	51 W	>80	-40°F - 122°F	Premium	100W MH, 4T8
EDV-8L-U-xx-FRL-ND	6,803 lm	136 lm/W	7,049 lm	141 lm/W	7,295 lm	146 lm/W	7,861 lm	155 lm/W	50 W	>80	-40°F - 122°F	Premium	100W MH, 4T8
EDV-8L-U-xx-PFL	6,984 lm	136 lm/W	7,117 lm	139 lm/W	7,285 lm	143 lm/W	7,620 lm	149 lm/W	51 W	>80	-40°F - 122°F	Premium	100W MH, 4T8
EDV-8L-U-xx-PFL-ND	6,889 lm	134 lm/W	7,009 lm	137 lm/W	7,128 lm	139 lm/W	7,428 lm	144 lm/W	51 W	>80	-40°F - 122°F	Premium	100W MH, 4T8
EDV-12L-U-xx	11,386 lm	139 lm/W	11,682 lm	142 lm/W	11,978 lm	146 lm/W	12,570 lm	153 lm/W	82 W	>80	-40°F - 122°F	Premium	175W MH, 2T5HO
EDV-12L-U-xx-ND	11,477 lm	140 lm/W	11,775 lm	144 lm/W	12,073 lm	147 lm/W	12,670 lm	155 lm/W	82 W	>80	-40°F - 122°F	Premium	175W MH, 2T5HO
EDV-12L-U-xx-FRL	11,020 lm	134 lm/W	11,306 lm	138 lm/W	11,593 lm	141 lm/W	12,240 lm	148 lm/W	82 W	>80	-40°F - 122°F	Premium	175W MH, 2T5HO
EDV-12L-U-xx-FRL-ND	10,100 lm	123 lm/W	10,520 lm	129 lm/W	10,941 lm	134 lm/W	11,910 lm	144 lm/W	82 W	>80	-40°F - 122°F	Premium	175W MH, 2T5HO
EDV-12L-U-xx-PFL	10,408 lm	128 lm/W	10,678 lm	132 lm/W	10,949 lm	135 lm/W	11,490 lm	142 lm/W	81 W	>80	-40°F - 122°F	Premium	175W MH, 2T5HO
EDV-12L-U-xx-PFL-ND	10,380 lm	128 lm/W	10,551 lm	130 lm/W	10,722 lm	132 lm/W	11,064 lm	136 lm/W	81 W	>80	-40°F - 122°F	Premium	175W MH, 2T5HO
EDV-15L-U-xx	15,455 lm	148 lm/W	15,714 lm	150 lm/W	15,973 lm	153 lm/W	16,490 lm	158 lm/W	105 W	>80	-40°F - 122°F	Premium	200W MH, 6T8
EDV-15L-U-xx-ND	15,120 lm	145 lm/W	15,373 lm	147 lm/W	15,626 lm	150 lm/W	16,132 lm	155 lm/W	104 W	>80	-40°F - 122°F	Premium	200W MH, 6T8
EDV-15L-U-xx-FRL	14,462 lm	139 lm/W	14,704 lm	141 lm/W	14,946 lm	143 lm/W	15,430 lm	148 lm/W	104 W	>80	-40°F - 122°F	Premium	200W MH, 6T8
EDV-15L-U-xx-FRL-ND	14,072 lm	135 lm/W	14,307 lm	137 lm/W	14,543 lm	139 lm/W	15,014 lm	144 lm/W	104 W	>80	-40°F - 122°F	Premium	200W MH, 6T8
EDV-15L-U-xx-PFL	13,590 lm	131 lm/W	13,817 lm	133 lm/W	14,045 lm	136 lm/W	14,500 lm	140 lm/W	104 W	>80	-40°F - 122°F	Premium	200W MH, 6T8
EDV-15L-U-xx-PFL-ND	13,281 lm	128 lm/W	13,503 lm	130 lm/W	13,725 lm	133 lm/W	14,170 lm	137 lm/W	104 W	>80	-40°F - 122°F	Premium	200W MH, 6T8
EDV-18L-U-xx	18,279 lm	139 lm/W	18,754 lm	143 lm/W	19,230 lm	147 lm/W	20,180 lm	154 lm/W	131 W	>80	-40°F - 131°F	Premium	250W MH, 4T5HO
EDV-18L-U-xx-ND	18,831 lm	142 lm/W	18,973 lm	143 lm/W	19,116 lm	144 lm/W	19,400 lm	147 lm/W	132 W	>80	-40°F - 131°F	Premium	250W MH, 4T5HO
EDV-18L-U-xx-FRL	18,390 lm	140 lm/W	18,529 lm	141 lm/W	18,668 lm	142 lm/W	18,960 lm	144 lm/W	131 W	>80	-40°F - 131°F	Premium	250W MH, 4T5HO
EDV-18L-U-xx-FRL-ND	18,249 lm	139 lm/W	18,387 lm	140 lm/W	18,524 lm	141 lm/W	18,800 lm	143 lm/W	132 W	>80	-40°F - 131°F	Premium	250W MH, 4T5HO
EDV-18L-U-xx-PFL	17,695 lm	134 lm/W	17,829 lm	135 lm/W	17,963 lm	136 lm/W	18,230 lm	138 lm/W	132 W	>80	-40°F - 131°F	Premium	250W MH, 4T5HO
EDV-18L-U-xx-PFL-ND	17,200 lm	131 lm/W	17,330 lm	132 lm/W	17,460 lm	133 lm/W	17,720 lm	135 lm/W	131 W	>80	-40°F - 131°F	Premium	250W MH, 4T5HO
EDV-24L-U-xx	22,629 lm	138 lm/W	23,209 lm	142 lm/W	23,789 lm	145 lm/W	24,950 lm	152 lm/W	164 W	>80	-40°F - 122°F	Premium	400W MH, 6T5HO
EDV-24L-U-xx-ND	20,913 lm	126 lm/W	21,558 lm	130 lm/W	22,202 lm	134 lm/W	23,490 lm	142 lm/W	166 W	>80	-40°F - 122°F	Premium	400W MH, 6T5HO
EDV-24L-U-xx-FRL	21,260 lm	131 lm/W	21,805 lm	135 lm/W	22,350 lm	138 lm/W	23,600 lm	145 lm/W	163 W	>80	-40°F - 122°F	Premium	400W MH, 6T5HO
EDV-24L-U-xx-FRL-ND	19,260 lm	119 lm/W	19,853 lm	123 lm/W	20,446 lm	126 lm/W	21,780 lm	134 lm/W	163 W	>80	-40°F - 122°F	Premium	400W MH, 6T5HO
EDV-24L-U-xx-PFL	19,660 lm	122 lm/W	20,202 lm	125 lm/W	20,745 lm	129 lm/W	21,870 lm	135 lm/W	161 W	>80	-40°F - 122°F	Premium	400W MH, 6T5HO
EDV-24L-U-xx-PFL-ND	18,580 lm	115 lm/W	19,280 lm	120 lm/W	19,980 lm	124 lm/W	21,460 lm	133 lm/W	161 W	>80	-40°F - 122°F	Premium	400W MH, 6T5HO
EDV-30L-U-xx	30,151 lm	146 lm/W	30,656 lm	149 lm/W	31,160 lm	151 lm/W	32,170 lm	156 lm/W	206 W	>80	-40°F - 131°F	Premium	575W MH, 10T8
EDV-30L-U-xx-ND	28,684 lm	141 lm/W	29,406 lm	144 lm/W	30,127 lm	148 lm/W	31,570 lm	155 lm/W	204 W	>80	-40°F - 131°F	Premium	575W MH, 10T8
EDV-30L-U-xx-FRL	27,820 lm	136 lm/W	28,286 lm	138 lm/W	28,751 lm	141 lm/W	29,770 lm	145 lm/W	205 W	>80	-40°F - 131°F	Premium	575W MH, 10T8
EDV-30L-U-xx-FRL-ND	26,670 lm	131 lm/W	27,341 lm	134 lm/W	28,012 lm	137 lm/W	29,670 lm	144 lm/W	204 W	>80	-40°F - 131°F	Premium	575W MH, 10T8
EDV-30L-U-xx-PFL	27,011 lm	133 lm/W	27,463 lm	135 lm/W	27,916 lm	137 lm/W	28,820 lm	142 lm/W	203 W	>80	-40°F - 131°F	Premium	575W MH, 10T8
EDV-30L-U-xx-PFL-ND	26,730 lm	131 lm/W	27,178 lm	133 lm/W	27,625 lm	136 lm/W	28,520 lm	140 lm/W	204 W	>80	-40°F - 131°F	Premium	575W MH, 10T8
EDV-36L-U-xx	33,031 lm	135 lm/W	33,857 lm	138 lm/W	34,682 lm	142 lm/W	36,334 lm	148 lm/W	245 W	>80	-40°F - 122°F	Premium	750W MH, 8T5HO
EDV-36L-U-xx-ND	32,913 lm	134 lm/W	33,736 lm	138 lm/W	34,559 lm	141 lm/W	36,204 lm	148 lm/W	245 W	>80	-40°F - 122°F	Premium	750W MH, 8T5HO
EDV-36L-U-xx-FRL	31,466 lm	129 lm/W	32,253 lm	132 lm/W	33,040 lm	135 lm/W	34,613 lm	141 lm/W	245 W	>80	-40°F - 122°F	Premium	750W MH, 8T5HO
EDV-36L-U-xx-FRL-ND	31,471 lm	129 lm/W	32,258 lm	132 lm/W	33,044 lm	135 lm/W	34,618 lm	141 lm/W	245 W	>80	-40°F - 122°F	Premium	750W MH, 8T5HO
EDV-36L-U-xx-PFL	31,549 lm	129 lm/W	32,064 lm	131 lm/W	32,579 lm	133 lm/W	33,610 lm	138 lm/W	244 W	>80	-40°F - 122°F	Premium	750W MH, 8T5HO
EDV-36L-U-xx-PFL-ND	29,671 lm	121 lm/W	30,156 lm	123 lm/W	30,641 lm	125 lm/W	31,610 lm	129 lm/W	245 W	>80	-40°F - 122°F	Premium	750W MH, 8T5HO
EDV-48L-U-xx	44,041 lm	135 lm/W	45,142 lm	138 lm/W	46,243 lm	142 lm/W	48,445 lm	148 lm/W	327 W	>80	-40°F - 122°F	Premium	1000W MH, 10T5HO
EDV-48L-U-xx-ND	44,355 lm	134 lm/W	45,463 lm	138 lm/W	46,572 lm	141 lm/W	48,790 lm	148 lm/W	330 W	>80	-40°F - 122°F	Premium	1000W MH, 10T5HO
EDV-48L-U-xx-FRL	41,960 lm	129 lm/W	43,004 lm	132 lm/W	44,053 lm	135 lm/W	46,151 lm	141 lm/W	327 W	>80	-40°F - 122°F	Premium	1000W MH, 10T5HO
EDV-48L-U-xx-FRL-ND	42,218 lm	129 lm/W	43,274 lm	132 lm/W	44,329 lm	135 lm/W	46,440 lm	141 lm/W	329 W	>80	-40°F - 122°F	Premium	1000W MH, 10T5HO
EDV-48L-U-xx-PFL	42,250 lm	129 lm/W	42,318 lm	130 lm/W	42,619 lm	131 lm/W	43,220 lm	133 lm/W	325 W	>80	-40°F - 122°F	Premium	1000W MH, 10T5HO
EDV-48L-U-xx-PFL-ND	39,610 lm	123 lm/W	40,257 lm	125 lm/W	40,904 lm	127 lm/W	42,590 lm	131 lm/W	326 W	>80	-40°F - 122°F	Premium	1000W MH, 10T5HO
EDV-60L-U-xx	61,399 lm	149 lm/W	62,134 lm	151 lm/W	62,870 lm	152 lm/W	64,340 lm	156 lm/W	413 W	>80	-40°F - 122°F	Premium	1000W MH, 12T5HO
EDV-60L-U-xx-ND	60,572 lm	148 lm/W	61,298 lm	150 lm/W	62,023 lm	152 lm/W	63,474 lm	155 lm/W	408 W	>80	-40°F - 122°F	Premium	1000W MH, 12T5HO
EDV-60L-U-xx-FRL	57,910 lm	142 lm/W	58,603 lm	144 lm/W	59,297 lm	145 lm/W	61,070 lm	149 lm/W	409 W	>80	-40°F - 122°F	Premium	1000W MH, 12T5HO
EDV-60L-U-xx-FRL-ND	57,918 lm	142 lm/W	58,612 lm	144 lm/W	59,305 lm	145 lm/W	60,692 lm	149 lm/W	408 W	>80	-40°F - 122°F	Premium	1000W MH, 12T5HO
EDV-60L-U-xx-PFL	53,138 lm	130 lm/W	54,006 lm	132 lm/W	54,874 lm	134 lm/W	56,610 lm	138 lm/W	410 W	>80	-40°F - 122°F	Premium	1000W MH, 12T5HO
EDV-60L-U-xx-PFL-ND	51,693 lm	127 lm/W	52,537 lm	129 lm/W	53,381 lm	131 lm/W	55,070 lm	135 lm/W	408 W	>80	-40°F - 122°F	Premium	1000W MH, 12T5HO

¹ LED Chips are frequently updated therefore values are nominal

² Electrical data at 25C (77F). Actual wattage may differ by +/-10%.

³ BLK fixture finish reduces stated performance by 16%.

SPECIFICATIONS

CONSTRUCTION

Aluminum body with steel driver channel for maximum rigidity and thermal properties. Sleek curved polycarbonate injection molded end caps provide a modern finish while adding rigidity and durability. Toolless hinged driver door access for ease of maintenance and installation. Power access plate mounted on back of center driver channel for easy access to wiring. Product proudly assembled in the United States of America.

ELECTRICAL

Class 2 LED light engine for high efficacy and long life. Calculated L₇₀ > 100,000 hrs. LED Lumen Maintenance Estimates based on TM-21 projections for the light source at 25°C ambient. Power Factor > 0.90. Standard 120-277 Vac 0-10V dimmable (10%-100%) with optional 347-480 Vac step down transformer. Optional emergency battery backups and generator transfer device available to meet critical life safety lighting requirements. Fixture reduced maximum ambient for emergency battery backup and step down options. Optional upright wired to sensor if ordered together.

MOUNTING

Options include suspension chain, aircraft cables, hook, single pendant (HUB), surface mount (SMZBKIT). Reduced maximum ambient range for surface mount.

WARRANTY

5 Year Warranty (Terms and Conditions apply)

OPTICS

Standard without lens. Optional frosted acrylic (FRL) and frosted polycarbonate (PFL) lenses available for added LED protection and glare reduction. Both optics are IP5X rated; protected against dust intrusion. Frosted Polycarbonate lens (PFL) is IK10 Impact Rated; highest impact rating available. Wide (std.) & Narrow (ND) Distribution options available for all lumen packages.

THERMAL

Ambient temperature range -40F up to 131F (-40C to 55C). Reference LED Systems Info for more detail. Fixture to be mounted at a minimum plenum height of 18" to maintain maximum ambient temperature. Reduced maximum ambient for surface mounting.

CONTROLS

Factory installed Advanced and Basic integral occupancy sensor options available. All Basic sensors are end mounted. Advanced EasySense sensor is end mounted. All other Advanced sensors are center driver cover mounted. Inquire with manufacturer for additional controls options, including customer supplied items.

CERTIFICATIONS

ETL listed to US and Canadian safety standards. Suitable for damp locations. American Recovery and Reinvestment Act Funding Compliant. DLC (DesignLights Consortium) Premium Qualified, with some Standard Qualified configurations. Please refer to the DLC Qualified Products List at www.designlights.org/QPL to confirm specific product qualifications.

CONTROLS OPTIONS

BASIC

FIOS

Standard on/off motion sensor. Comes with 360 degree high bay lens, 360 degree low bay lens & aisle lens. 360 degree high bay lens factory installed, unless notified otherwise. Sensor mounted off end cap of fixture. Inquire for mounting on center of driver cover.

FIOSPC

Motion sensor with the addition of photocell control. When installed, fixture will not activate unless 1. motion is detected and 2. light levels are below the preset level. When activated, fixture will turn on to 100% light output & will only shut off when one of the two levels mentioned above are met. If no motion is detected & light levels fall below preset level the fixture remains off. Sensor mounted off end cap of fixture.

FIOSPC/DLH

Factory installed motion sensor with the addition of photocell control that will allow for daylight harvesting. When installed, fixture will not activate unless 1. motion is detected & 2. light levels are below the preset level. When activated, fixture will turn on only enough to meet the preset light levels and will adjust as the amount of light in the space adjusts between 100%-10%. If light levels are adequate the fixture will remain off. Sensor mounted off end cap of fixture.

DHPC

Daylight Harvesting off photocell. Fixtures will continually dim up/down throughout the day based on light level readings taken from the photocell control. Sensor mounted off end cap of fixture.

ADVANCED

Philips ES/HB

EasySense sensor combines occupancy sensing, daylight harvesting and institutional tuning in one compact solution. This is an ideal control for any high bay application. Each device allows you to turn on/off occupancy and/or daylight harvesting functions as well as set the full light output, background light level, occupancy prolong time, occupancy grace fading time & occupancy time out/hold time. Requires use of EasySense Pre-Programmed Control Device (ES/PCD) & Commissioning IR Blaster (ES/IR); one of each needed per project. (Sold separately). Sensor mounted off end cap of fixture.

Legrand FSP-211

FSP-211 offers fully adjustable high and low dimmed light levels with optional photocell. Hold off setpoint with automatic calibration option. Adjustable time delay and cut off delay. Sensor adjustable programming with handheld wireless configuration tool; FSIR-100. (Sold separately. One needed per project). Sensor mounted on center driver channel.

Legrand FSP-311

FSP-311 offers fully adjustable high and low dimmed light levels with optional photocell. Hold off setpoint with automatic calibration option. Adjustable time delay and cut off delay. Sensor adjustable programming via iOS® or Android® 'Sensor Configuration' App. Sensor mounted on center driver channel.

USBD

User Selectable Bi-Level Dimming. Allows the end user to manually select the unoccupied dimming level. Once motion is detected, the fixture will return to 100% light output. Sensor mounted off end cap of fixture.

BDxx

Factory set Bi-Level Dimming. Sensor is set to dim level, as indicated in the "xx" portion of the part number, when the area is unoccupied. Example: BD20 sets the fixture to dim down to 20% lumen output when the area is unoccupied. Once motion is detected, the fixture will return to 100% light output. Sensor mounted off end cap of fixture.

BDxxPC

Factory set Bi-Level Dimming with motion and photocell. Sensor is set to dim level, as indicated in the "xx" portion of the part number, when the area is unoccupied and will not return to 100% light output unless 1. motion is detected and 2. the light level is below the preset level. Example: BD20PC sets the fixture to dim down to 20% lumen output when the area is unoccupied and will not return to 100% light output unless the above conditions are met for both motion and light level readings. Sensor mounted off end cap of fixture.

Enlighted 5S/CU/IL

Bundled System with Enlighted 5E sensor (SU-5S-H-IL), Control Unit (CU-4E-FM) and Cable (CBL-5E-CU4-30N). Fixtures are controlled based on occupancy and ambient light. Includes ability to group fixtures together and connect to a switch to zone fixtures for group operation. Provided factory installed components only. Enlighted system provided by others. Contact factory for more information. Sensor mounted on center driver channel.

Enlighted 5S/CU/CL

Bundled System with Enlighted 5E sensor (SU-5S-H-CL), Control Unit (CU-4E-FM) & Cable (CBL-5E-CU4-30N). Fixtures are controlled based on occupancy & ambient light. Includes individual lighting control plus connection to Enlighted Energy Manager. The Energy Manager provides data analysis for all data collected by the Enlighted Smart Sensors for energy, occupancy & environment. Provided factory installed components only. Enlighted system provided by others. Contact factory for more information. Sensor mounted on center driver channel.

Enlighted 5S/CU/IOT

Bundled System with Enlighted 5E sensor (SU-5S-H-IOT), Control Unit (CU-4E-FM) and Cable (CBL-5E-CU4-30N). Fixtures are controlled based on occupancy and ambient light. Includes individual lighting control plus connection to Enlighted Energy Manager. The Energy Manager provides data analysis for all data collected by Enlighted Smart Sensors for energy, occupancy & environment. Additionally, the IOT functionality takes the data access and function beyond just lighting to a wide range of applications beyond the standard connected lighting controls. Provided factory installed components only. Enlighted system provided by others. Contact factory for more information. Sensor mounted on center driver channel.

ENDEAVOUR

LINEAR HIGH BAY

OPTIONS



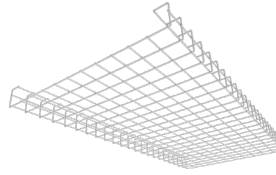
CORDx

Cords available in 6ft, 10ft, 12ft & 20ft
(Inquire for additional options) Plug options available



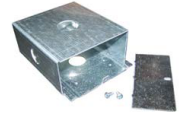
QDCx

Quick Disconnect Cords available in 6ft, 10ft, 12ft & 20ft (Inquire for additional options) Plug options available.



WC

11 GA Wire Cage



FMB

Includes rigid box to attach to the fixture, provides for single point mounting to accept a pendant, hook or conduit hub (sold separately)



HUB 3/4

Conduit Hub 3/4" for Pendant Mounting



HOOK

Cast Iron Hook for Single Point Mounting



HB-XX-18Y-PAD

Includes 2 adjustable cable hangers. Available in 60", 120", 180" & 240"

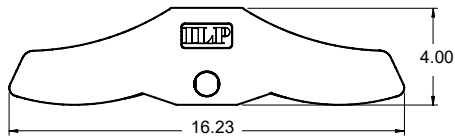
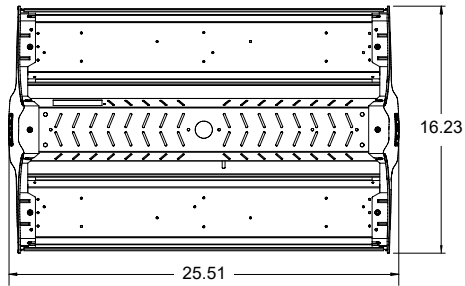


SMBZKIT

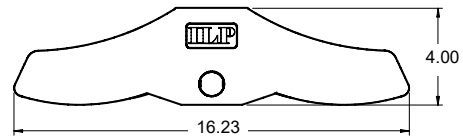
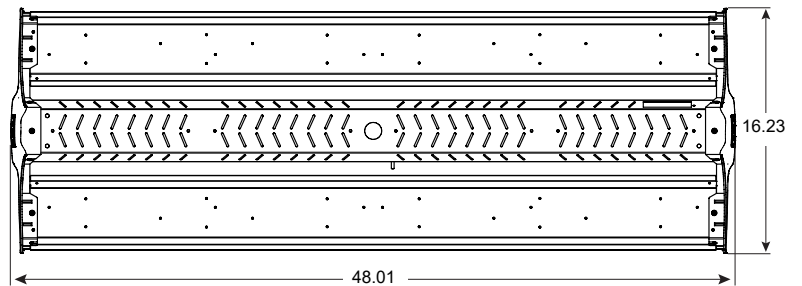
Surface Mount Bracket Kit provides a 2" space above the fixture

LINE DRAWINGS

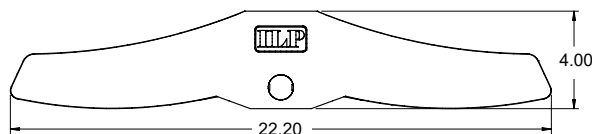
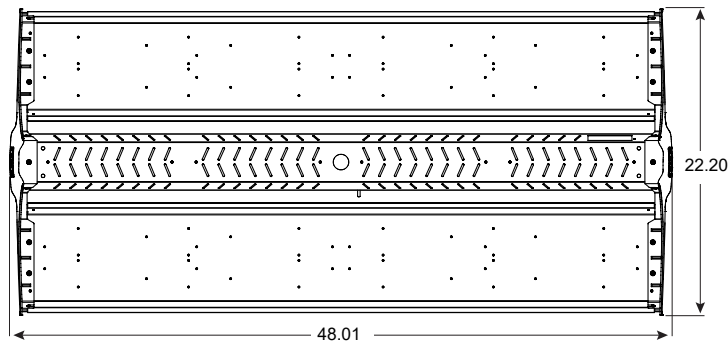
8L - 24L



30L



36L - 60L

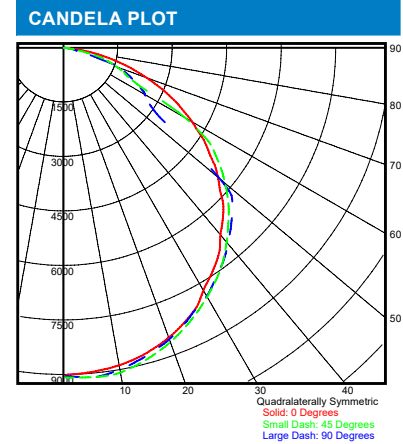


LINEAR HIGH BAY

PHOTOMETRIC DATA

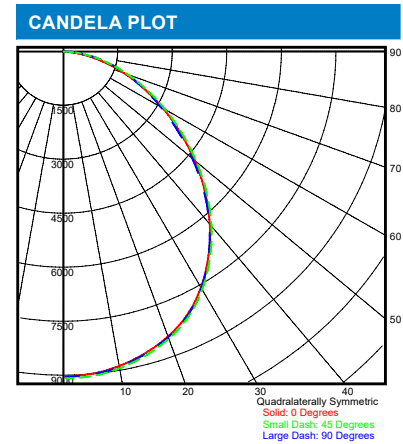
LUMINAIRE DATA	
Part Number	EDV-24L-U-50
Description	Endeavour 2ft High Bay, 24000lm, without lens
Fixture Lumens (lm)	24,950 lm
Wattage (W)	164 W
Efficacy (lm/W)	152 lm/W
Mounting	Pendant
Spacing Criteria	0° = 1.27, 90° = 1.29

ZONAL LUMEN SUMMARY		
Zone	Lumens (lm)	% Fixture
0° - 40°	11,878	48%
0° - 60°	20,932	84%
0° - 90°	24,950	100%
90° - 180°	0	0%
0° - 180°	24,950	100%



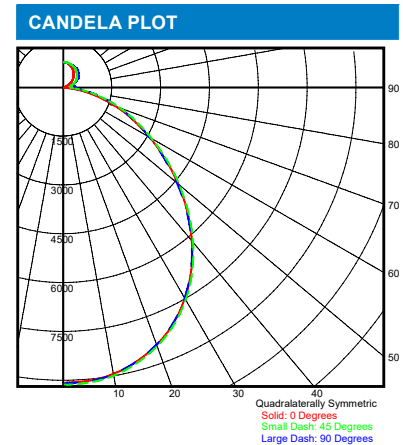
LUMINAIRE DATA	
Part Number	EDV-24L-U-50-FRL
Description	Endeavour 2ft High Bay, 24000lm, with frosted acrylic lens
Fixture Lumens (lm)	23,600 lm
Wattage (W)	163 W
Efficacy (lm/W)	145 lm/W
Mounting	Pendant
Spacing Criteria	0° = 1.24, 90° = 1.24

ZONAL LUMEN SUMMARY		
Zone	Lumens (lm)	% Fixture
0° - 40°	11,452	49%
0° - 60°	19,284	82%
0° - 90°	23,600	100%
90° - 180°	0	0%
0° - 180°	23,600	100%



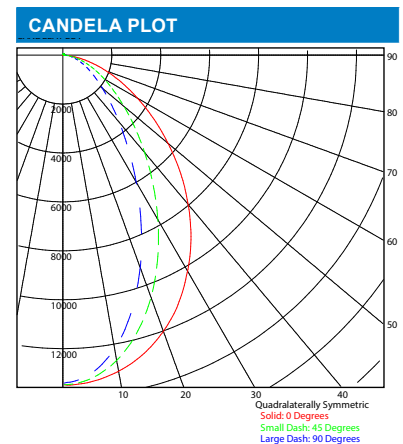
LUMINAIRE DATA	
Part Number	EDV-24L-U-50-FRL-UP/2L
Description	Endeavour 2ft High Bay, 24000lm, w/ frosted acrylic lens & 2000lm uplight
Fixture Lumens (lm)	25,600 lm
Wattage (W)	176 W
Efficacy (lm/W)	145 lm/W
Mounting	Pendant
Spacing Criteria	0° = 1.24, 90° = 1.24

ZONAL LUMEN SUMMARY		
Zone	Lumens (lm)	% Fixture
0° - 40°	11,452	45%
0° - 60°	19,284	75%
0° - 90°	23,600	92%
90° - 180°	2,000	8%
0° - 180°	25,600	100%



LUMINAIRE DATA	
Part Number	EDV-24L-U-50-FRL-ND
Description	Endeavour 2ft High Bay, 24000lm, with narrow distribution through a frosted acrylic lens
Fixture Lumens (lm)	21,780 lm
Wattage (W)	163 W
Efficacy (lm/W)	134 lm/W
Mounting	Pendant
Spacing Criteria	0 = 1.14 90 = 0.82

ZONAL LUMEN SUMMARY		
Zone	Lumens (lm)	% Fixture
0° - 40°	12,945	59.5%
0° - 60°	18,909	86.8%
0° - 90°	21,780	100%
90° - 180°	0	0%
0° - 180°	21,780	100%



High Bay Sensor

2-wire

SPECIFICATION

The Enlighted High Bay sensor, 2-wire, supports direct connection to 2-wire compatible drivers. The sensor is designed for indoor applications with high ceilings such as warehouses, atriums, and manufacturing facilities. Integrated sensors capture data that is both processed locally and transmitted over the Enlighted network, enabling a full suite of applications. In addition, the sensor supports Bluetooth[®] Low Energy communication with tags and other BLE devices.

OVERVIEW

The High Bay sensor, 2-wire, is a complete sensing and lighting control node powered from its attached light fixture. Sensor information combined with a configurable behavior profile makes the Surface Mount Sensor an integral component of an intelligent lighting control and sensing solution. With integrated wireless communications for data transmission and remote configuration as well as autonomous fixture-level control, this sensor brings advanced lighting automation to a whole new level.

FEATURES AND BENEFITS

2-Wire Driver Compatibility: The sensor is easily connected to compatible LED drivers, simplifying installation, reducing wiring errors, and providing plug-and-play capabilities. Compatible LED drivers include DALI drivers with an external or integrated Power Supply Unit (PSU).

Localized Lighting Control: Light-level schedules, preferences, and profiles for each fixture are wirelessly communicated at system setup and stored for continuous operation.

Edge Sensing: Local processing capability supports advanced sensing and detection algorithms, providing optimization of existing features and enabling future applications.

Bluetooth Low Energy: An embedded BLE radio allows the sensor to receive and transmit beacons as well as support communication with lighting control devices and other sensors.

Occupancy and Thermal Sensing: A digital Passive Infrared (PIR) sensor combined with ambient and temperature sensing support motion identification while minimizing false detection events.

Tunable White: Compatible with DALI Type 8 dual-channel drivers to support tunable white fixtures, enabling color temperature transitions based on time of day or user control.

Daylight Harvesting: Captured ambient light information is locally processed to raise and lower light levels based on available daylight.

Room and Zone Control: Pairs with room control switches for code-compliant manual-on or auto-off capability. Sensors can be grouped into zones that share occupancy sensing data and coordinate light control based on detected motion.

IoT Sensing Node: When configured as an IoT Node, the sensor streams comprehensive live data for use with Enlighted's real-time location and analytics software applications. This option is available directly from the factory or as a remote upgrade.

Standards-Based Networking and Security: The Enlighted 802.15.4 wireless network with AES-128 encryption delivers secure, reliable communication that coexists with Wi-Fi networks by sensing low-traffic channels and transmitting in bursts.

Data Privacy: The sensor captures occupancy data in the sensor coverage area. The sensor cannot directly reference or identify any natural person.



High Bay Sensor, 2-wire

L	3.46"	88 mm
W	3.46"	88 mm
H	1.18"	30 mm

ENLIGHTED SPECIFICATION SUBMITTAL

Job Name:	<input type="text"/>
Job Number:	<input type="text"/>
Product Codes:	<input type="checkbox"/> SU-5S-2W-H[IoT/CL/IL]
	<input type="checkbox"/> SU-CL-IoT-UPG
	<input type="checkbox"/> SU-IL-IoT-UPG
	<input type="checkbox"/> BTTN-SU-2-00
	<input type="checkbox"/> BRKT-SU-2-00
	<input type="checkbox"/>
	<input type="checkbox"/>
	<input type="checkbox"/>

High Bay Sensor

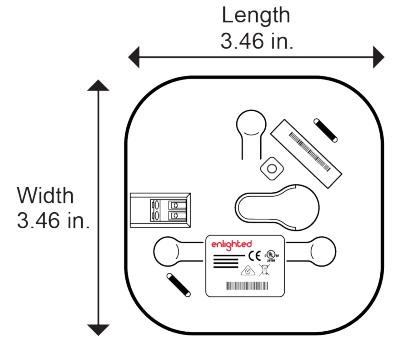
2-wire

MOUNTING

The High Bay sensor comes with a nylon threaded screw for mounting in acoustical tile or drywall ceilings. Pendant button mount and flat metal bracket mount options are available separately.

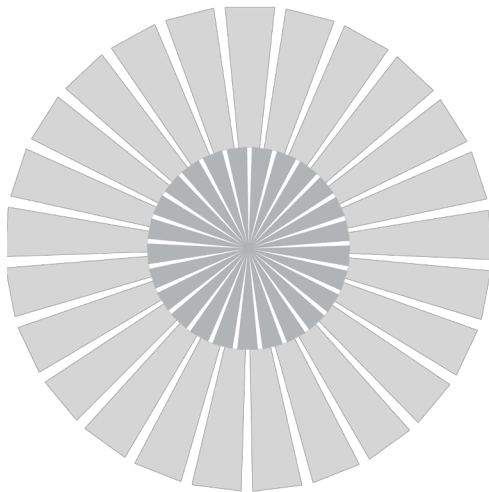
SENSOR COVERAGE PATTERNS

The Enlighted High Bay sensor incorporates an optical Fresnel lens that works with the digital Passive Infrared (PIR) sensor to detect occupancy and motion. The multifaceted lens focuses light onto the PIR to produce an all-encompassing field of view through aggregation of many narrow fields of view. When the 2-Wire Surface Mount Sensor is deployed as recommended, the area covered by each sensor overlaps, reinforcing coverage and accuracy across the entire floor plan.

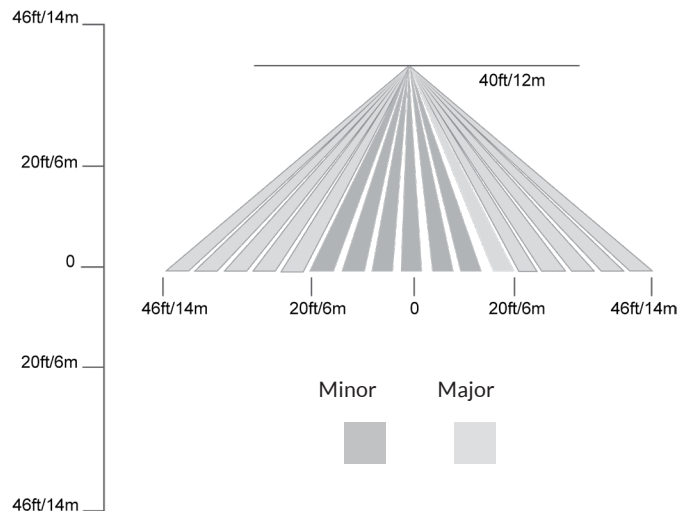


Ceiling Height	Minor Motion (Radius)	Major Motion (Radius)
20 ft/6 m	10 ft/3 m	23 ft/7 m
40 ft/12 m	20 ft/6 m	46 ft/14 m

Top View



Side View



TECHNICAL SPECIFICATIONS

Motion Sensing: Digital Passive IR
Photosensor: Light Pipe/Photosensor Array
Enclosure: Recyclable ABS
Type: Closed Loop Light Sensor
Operating Temp: 32° to 122° F/0° to 50° C
Max. Install Height: 50 ft/15.25 m
Wireless Standards: IEEE 802.15.4
 Bluetooth 4.0 Low Energy (BLE)
 Radio Frequency: 2400-2483.5 MHz
 Wireless Range: 150 ft. (46 m) radius open range
 Encryption: AES-128

ORDERING INFORMATION

SU-5S-2W-H-xxx* High Bay Sensor, 2-wire
 (*see Product codes)
 SU-CL-IoT-UPG Connected Lighting to IoT
 Sensor Upgrade
 SU-IL-IoT-UPG Independent Lighting to IoT
 Sensor Upgrade
 BTTN-SU-2-00 Pendant Button Mount
 BRKT-SU-2-00 Bracket Mount

COMPLIANCE

Europe   
 United States  
 Canada  

WARRANTY: 5 years
 View www.enlightedinc.com/limited-warranty-terms
 for complete terms and conditions

***Product Codes:** xxx
 IoT = IoT Node
 CL = Connected Lighting
 IL = Independent Lighting/Enlighted One

The Bluetooth® word mark and logos are registered trademarks owned by Bluetooth SIG, Inc. and any use of such marks by Enlighted Inc. is under license. Other trademarks and trade names are those of their respective owners.