

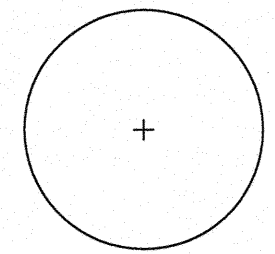
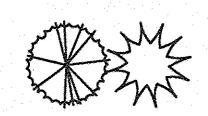




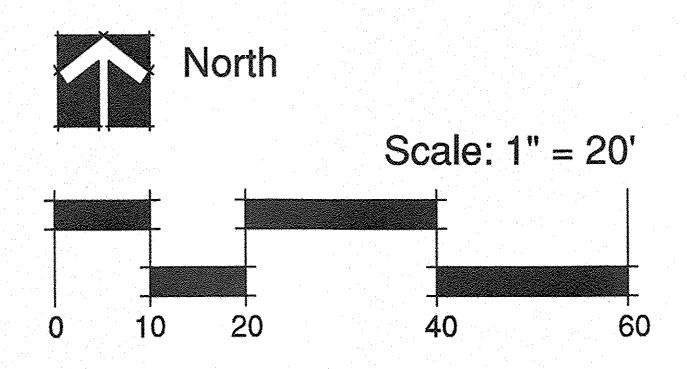
Existing Tree Inventory

Key	Scientific Name*	Common Name*	Size (caliper)	Height	Quality*	Status
1	Acer saccharinum	Silver Maple	21"	25'	Good	Remove
2	Acer saccharinum	Silver Maple	26"	25'	Good	Remove
3	Acer saccharinum	Silver Maple	25"	25'	Good	Remove
4	Acer saccharinum	Silver Maple	22"	20'	Good	Remove
5	Malus prunifolia	Plumleaf crabapple	20"	15'	Poor	Remove
6	Malus prunifolia	Plumleaf crabapple	26"16"	15'	Poor	Remove
7	Malus prunifolia	Plumleaf crabapple	12"	15'	Poor	Remove
8	Malus prunifolia	Plumleaf crabapple	12"	15'	Poor	Remove
9	Rahmis cathartica	Common Buckthorn	4@8"	20'	Poor	Remove
10	Morus rubra	Mulberry	4@6"	10'	Poor	Remove

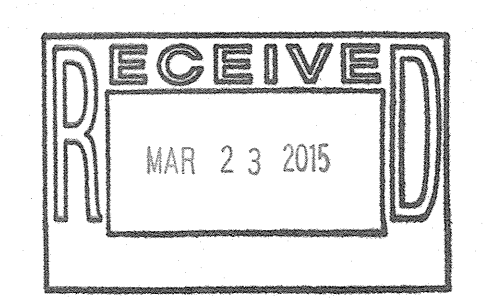
*Information has been verified with a Certified Arborist. Refer to Letter dated May 8th, 2014

Legend & Notes

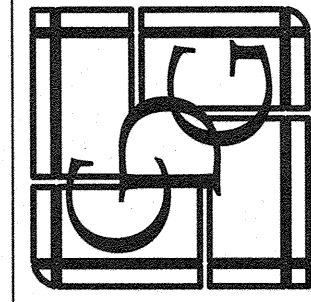
-  Existing shade tree
-  Existing evergreen shrubs
(Thuja occidentalis Eastern Arborvitae & Juniperus virginiana Eastern Red Cedar)
-  Existing deciduous shrubs
-  Existing hedge line.



BOARD APPROVED
 Case No: 2014-0084
 Date: 4/6/15
 W/Conditions: _____
 W/Out Conditions: X
 VILLAGE OF ORLAND PARK




NO.	REVISIONS	DATE	BY
-	ISSUED FOR PERMIT	08-22-14	B.C.
-	ISSUED FOR OWNER REVIEW	12-10-14	B.C.
-	ISSUED FOR OWNER REVIEW	01-16-15	B.C.
-	REISSUED FOR PERMIT	02-06-15	B.C.
1	LANDSCAPE REVIEW COMMENTS	03-16-15	B.C.



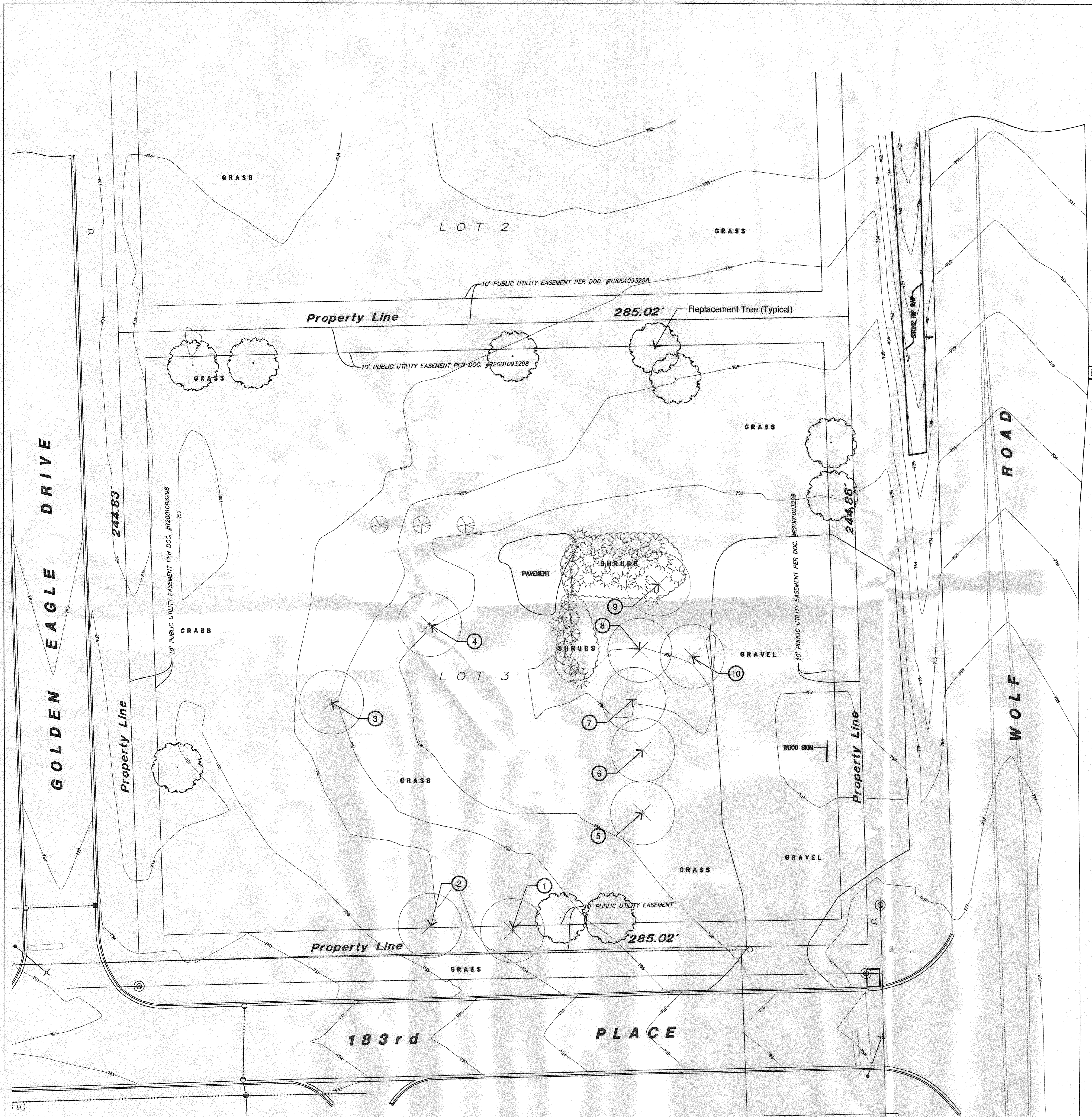
CORPORATE DESIGN + DEVELOPMENT GROUP, LLC
 183RD PLACE & WOLF ROAD
 ORLAND PARK, ILLINOIS 60462
 PH: 224-288-9900
 WWW.CDGLLCC.COM
 ILL. PROFESSIONAL DESIGN FIRM NO. 194-00913

RIDGWAY PETROLEUM STORE & CARWASH
 183RD PLACE & WOLF ROAD
 ORLAND PARK, IL



EXISTING TREE SURVEY

START DATE:	09-11-13
SCALE:	AS SHOWN
DRAWN:	BC, KND
CHECK:	CK
JOB:	D13062
SHEET:	TS-1
	1 OF 4

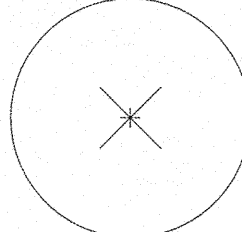
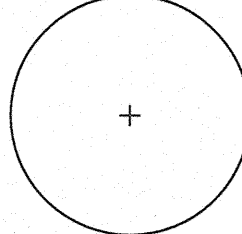
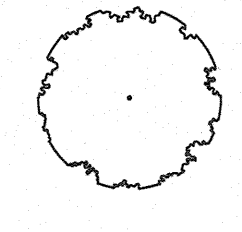
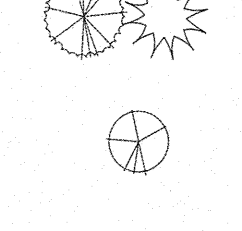




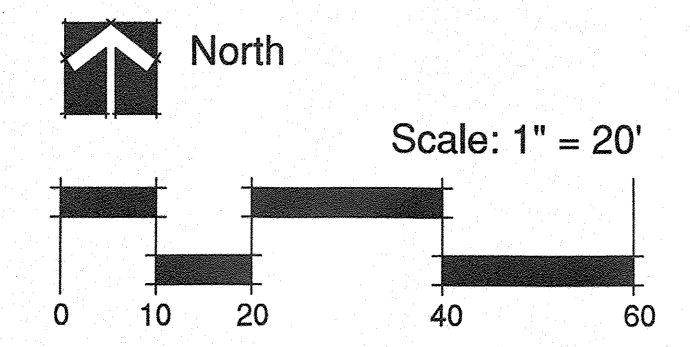
Existing Tree Inventory

Key	Scientific Name*	Common Name*	Size (caliper)	Height	Quality*	Status	Mitigation
1	Acer saccharinum	Silver Maple	21"	25'	Good	Remove	2 trees at 4" caliper
2	Acer saccharinum	Silver Maple	26"	25'	Good	Remove	3 trees at 4" caliper
3	Acer saccharinum	Silver Maple	25"	25'	Good	Remove	3 trees at 4" caliper
4	Acer saccharinum	Silver Maple	22"	20'	Good	Remove	2 trees at 4" caliper
5	Malus prunifolia	Plumleaf crabapple	20"	15'	Poor	Remove	0
6	Malus prunifolia	Plumleaf crabapple	2@16"	15'	Poor	Remove	0
7	Malus prunifolia	Plumleaf crabapple	12"	15'	Poor	Remove	0
8	Malus prunifolia	Plumleaf crabapple	12"	15'	Poor	Remove	0
9	Rhamnus cathartica	Common Buckthorn	4@6"	20'	Poor	Remove	0
10	Morus rubra	Mulberry	4@6"	10'	Poor	Remove	0

*Information is to be verified with a Certified Arborist prior to removal.

Legend & Notes

-  Existing shade tree to be removed.
-  Existing shade tree to remain. All grading and the storage of construction related equipment shall be forbidden from encroaching within the drip line of a tree. Crushed limestone, hydrocarbons, and other materials detrimental to trees shall not be dumped within the drip line of any tree, nor at any higher location where drainage toward the tree could conceivably affect the health of the tree.
-  Proposed location of Replacement Tree. Refer to Preliminary Landscape Plan for more information.
-  Existing evergreen shrubs to be removed. (Thuja occidentalis Eastern Arborvitae & Juniperus virginiana Eastern Red Cedar)
-  Existing deciduous shrubs to be removed.
-  Existing hedge line.

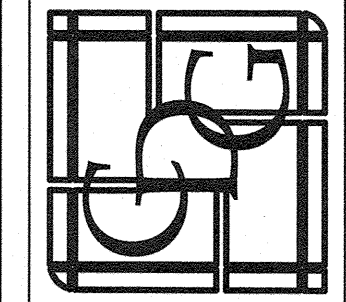


BOARD APPROVED

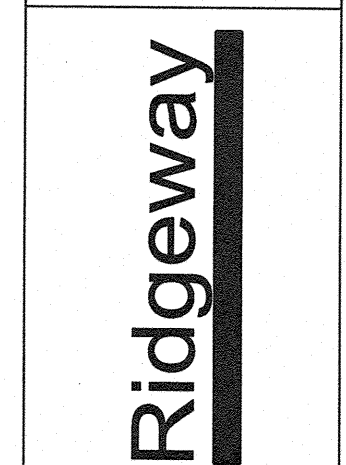
Case No: 2014-0084
Date: 4/6/15
W/Conditions:
W/Out Conditions:
VILLAGE OF ORLAND PARK

NO.	REVISIONS	BY	DATE	B.C.
	ISSUED FOR PERMIT		08-22-14	B.C.
	ISSUED FOR OWNER REVIEW		12-10-14	B.C.
	ISSUED FOR OWNER REVIEW		01-16-15	B.C.
	REISSUED FOR PERMIT		02-05-15	B.C.
1	LANDSCAPE REVIEW COMMENTS		03-16-15	B.C.

CORPORATE DESIGN + DEVELOPMENT GROUP, LLC
2075 PRUITT AVE.
PRUITT, ILLINOIS 60112
PH: 224.263.8866
FAX: 224.263.8866
ILLINOIS PROFESSIONAL DESIGN FIRM NO. 184-004833



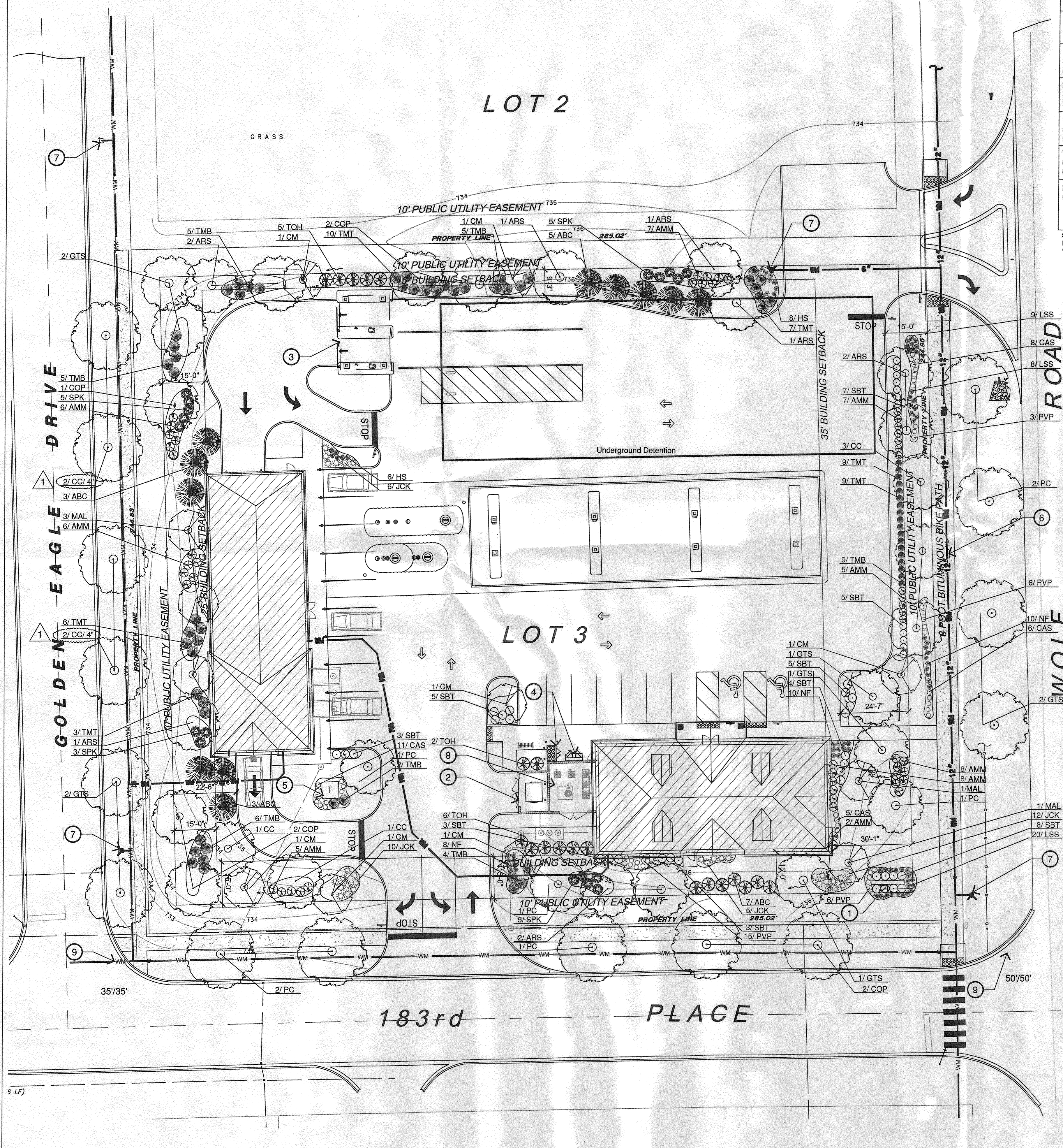
RIDGWAY PETROLEUM STORE & CARWASH
183RD PLACE & WOLF ROAD
ORLAND PARK, IL



LANDSCAPE REMEDIATION PLAN

START DATE: 09-11-13
SCALE: AS SHOWN
DRAWN: BC,KND
CHECK: CK
JOB: D13062

SHEET **LR-1**
2 OF 4

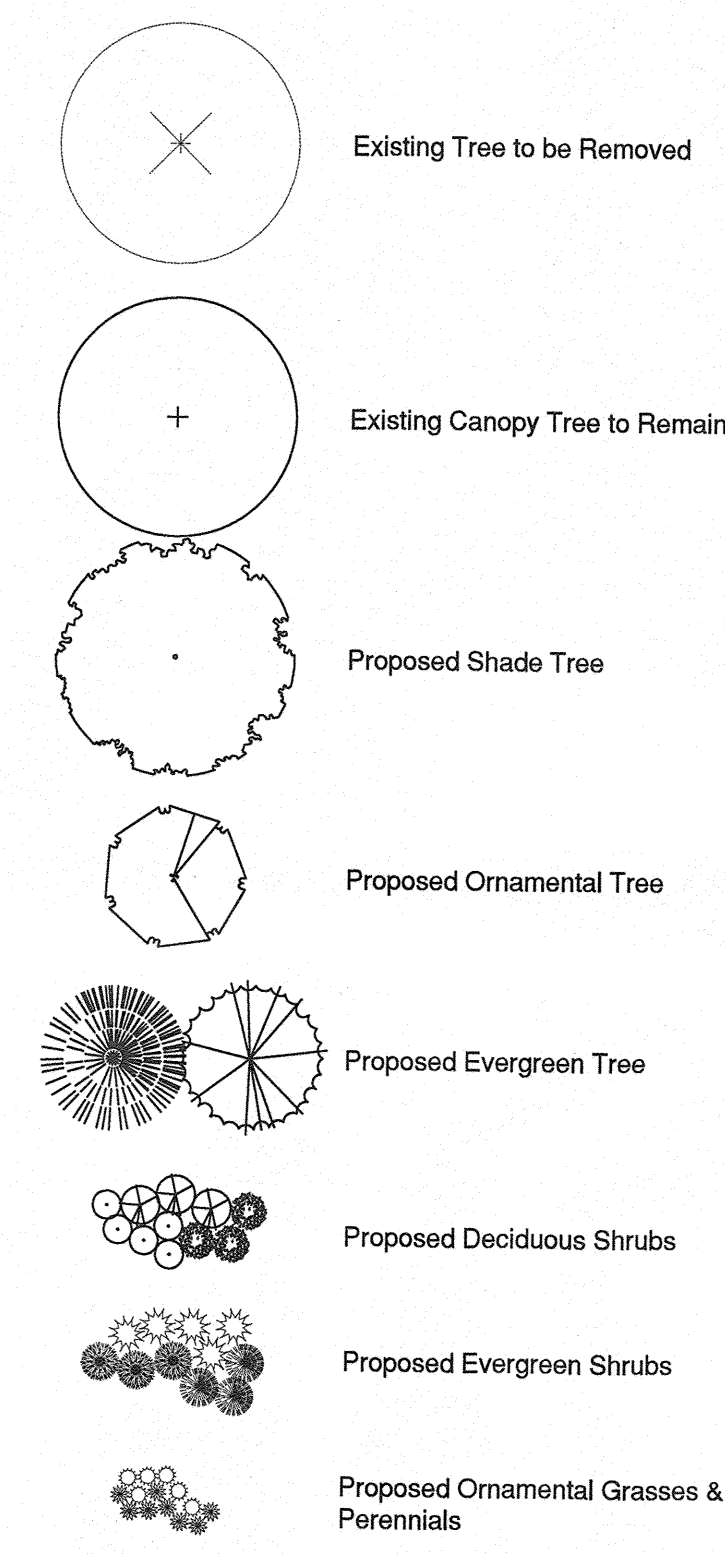


Landscape Requirements

Category	Required	Proposed	Existing
East Parkway - Wolf Road (205 LF) (205/40' = 5.125)	1 ST spaced every 40'	4 ST	---
South Parkway - 183rd Place (245 LF) - minus sight triangle (166/40' = 4.15)	1 ST spaced every 40'	5 ST	---
West Parkway - Golden Eagle Dr (245 LF) (245/40' = 6.125)	1 ST spaced every 40'	6 ST	---
North Buffer Yard - Vacant Lot (214 LF) (214/100' = 2.14)	Bufferyard "C" 10 ST, 4 OT and 39 SH (4.5 ST, 1.8 OT and 18 SH per 100')	2 ST, 10 ET, 2 OT and 39 SH + Perennials	5 Replacement Trees (ARS)
East Buffer Yard - Wolf Road (205 LF) (205/100' = 2.05)	Bufferyard "C" 10 ST, 4 OT and 37 SH (4.5 ST, 1.8 OT and 18 SH per 100')	6 ST, 2 OT and 50 SH + Perennials + Tall Grasses	2 Replacement Trees (ARS)
South Buffer Yard - 183rd Place (225 LF) (225/100' = 2.25)	Bufferyard "C" 11 ST, 4 OT and 41 SH (4.5 ST, 1.8 OT and 18 SH per 100')	4 ST, 7 ET, 4 OT and 46 SH + Perennials	2 Replacement Trees (ARS)
West Buffer Yard - Golden Eagle (245 LF) (245/100' = 2.45)	Bufferyard "B" 7 ST, 2 OT and 35 SH (2.8 ST, 0.8 OT and 14 SH per 100')	5 ST, 6 ET, 3 OT and 40 SH	1 Replacement Tree (ARS)
Parking Lot Landscaping (25 spaces, 2 islands)	1 tree and 1 shrub for every parking island, curbed planting islands at the ends of each row of parking shall be at least 10' wide and 200sf	2 ST, 1 OT, 18 SH + Perennials	---

ST = Shade Tree, OT = Ornamental Tree, ET = Evergreen Tree, SH = Shrub
 Plant Units (PU) = (LF of Property Line ÷ 100) X Bufferyard Diagram # of Plants
 *Trees located in existing 10' utility easement are to be discussed with utility company prior to Final Review

Plant Symbols Key



Notes

- Denotes location of proposed ground mount sign. (See Architectural Plans)
- Denotes location of proposed trash enclosure. (See Architectural Plans)
- Denotes location of proposed carwash pay canopy. (See Architectural Plans)
- Denotes location of proposed outdoor sales area. (See Architectural Plans)
- Denotes location of proposed transformer pad. (See Civil Engineering Plans)
- Denotes location of future sidewalk. (See Civil Engineering Plans)
- Denotes location of hydrant. (See Civil Engineering Plans for Grading)
- Denotes location of Mechanical Equipment Enclosure. (See Architectural Plans)
- Denotes clear sight triangle at street intersections

General Site Landscape Notes:
 Fine grade, fertilize and sod all disturbed areas. (See Specifications). Refer to the Civil Engineering Plans for the Soil Erosion Control Plan.
 Furnish and install 3" minimum layer of double shredded hardwood bark mulch and planting mix in all planting beds and tree rings. (See Specifications)
 All plant materials shall be nursery grown stock and shall be free of any deformities, diseases or insect damage. Any materials with damaged or crooked/disfigured leaders, bark abrasion, sunscald, insect damage, etc. are not acceptable and will be rejected.
 All plant materials shall be inspected and approved by the landscape architect prior to installation. Any materials installed without approval may be rejected.
 Trees not exhibiting a central (or single) leader will be rejected until called out in the Plant Schedule as multi-stem.
 Plant quantities shown in the Plan Schedule are for convenience only. The Contractor is responsible for providing and installing all materials shown on the plan and should not rely on the Plant Schedule for determining quantities.
 Plant materials shall be maintained in natural forms in a health and viable manner by the property Owner, and shall be replaced by the property Owner as necessary to comply with the approved design and the intent of the plan.

Plant List & Key

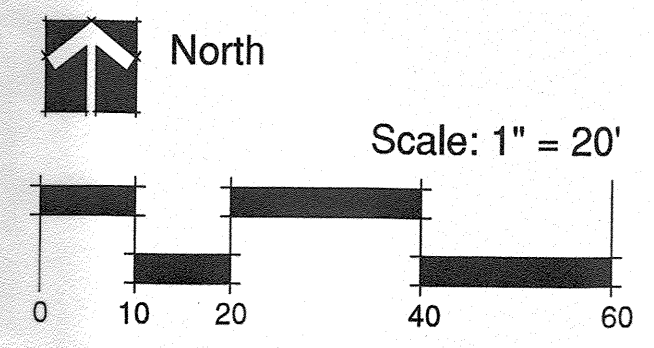
Key	Botanical Name (Common Name)	Size	Quantity
Replacement Trees			
ARS	<i>Acer rubrum</i> 'Red Sunset' (Red Sunset Maple)	4"	10
Shade Trees			
CC	<i>Carpinus caroliniana</i> 'American Hornbeam' (Ironwood)	2-1/2"	5
CC	<i>Carpinus caroliniana</i> 'American Hornbeam' (Ironwood)	4"	4
COP	<i>Celtis occidentalis</i> 'Prairie Pride' (Prairie Pride Hackberry)	2-1/2"	7
GTS	<i>Gleditsia triacanthos inermis</i> 'Skyline' (Skyline Thornless Honeylocust)	2-1/2"	9
PC	<i>Pyrus calleryana</i> 'Chanticleer' (Callery Pear)	2-1/2"	8
Bufferyard Ornamental Trees			
CM	<i>Cornus mas</i> (Cornelian Cherry Dogwood)	5'	7
MAL	<i>Malus x 'Cardinal'</i> (Flowering Crabapple)	5'	5
Bufferyard Evergreen Trees			
ABC	<i>Abies concolor</i> (White Fir)	6'	11
TOH	<i>Thuja occidentalis</i> 'Holmstrup' (Eastern Arborvitae)	6'	18
Deciduous Shrubs			
AMM	<i>Aronia melanocarpa</i> (Black Chokeberry)	36"	52
SBT	<i>Spiraea betulifolia</i> 'Tor' (Birchleaf Spirea)	24"	43
SPK	<i>Syringa patula</i> 'Miss Kim' (Miss Kim Dwarf Lilac)	36"	20
Evergreen Shrubs			
JCK	<i>Juniperus chinensis</i> 'Kallay's Compact' (Kallay Compact Chinese Juniper)	24"	33
TMB	<i>Taxus x media</i> 'Bergii' (Anglojap Yew)	24"	36
TMT	<i>Taxus x media</i> 'Tauntonii' (Taunton Yew)	24"	35
Perennials & Ornamental Grasses			
CAS	<i>Calamagrostis acutiflora</i> 'Stricta' (Narrow-leaved Reed Grass)	1 GAL	30
PVP	<i>Panicum virgatum</i> 'Prairie Fire' (Red Switchgrass)	1 GAL	30
HS	<i>Hemerocallis</i> 'Stella-de-Oro' (Stella-de-Oro Daylily)	1 GAL	24
LSS	<i>Leucanthemum x superbum</i> 'Snowcap' (Snowcap Shasta Daisy)	1 GAL	24
NF	<i>Nepeta faassenii</i> 'Walker's Low' (Walker's Low Catmint)	1 GAL	24

BOARD APPROVED

1 GAL Case No# 2014-0084
 Date: 4/6/15

W/Out Conditions: X

VILLAGE OF ORLAND PARK



BY	DATE	REVISIONS	NO.	CORPORATE DESIGN + DEVELOPMENT GROUP, LLC
B.C.	08-22-14	ISSUED FOR PERMIT	-	1100 N. HANCOCK AVENUE, SUITE 1000, CHICAGO, IL 60610
B.C.	12-10-14	ISSUED FOR OWNER REVIEW	-	PH: 312.333.9900
B.C.	01-16-15	ISSUED FOR OWNER REVIEW	-	WWW.GS2.COM
B.C.	02-06-15	REISSUED FOR PERMIT	-	ILL. PROFESSIONAL DESIGN FIRM NO. 194-00413
B.C.	03-16-15	LANDSCAPE REVIEW COMMENTS	1	

RIDGWAY PETROLEUM STORE & CARWASH
 183RD PLACE & WOLF ROAD
 ORLAND PARK, IL

Ridgway

LANDSCAPE PLAN

START DATE: 09-11-13
 SCALE: AS SHOWN
 DRAWN: BC,KND
 CHECK: CK
 JOB: D13062
 SHEET: L-1
 3 OF 4

Specifications

Section 32 93 00 - Plants

1.0 General

1.01 Description

- A. This work shall consist of the excavation, installation, backfilling, care and maintenance of landscape plantings.
- B. The size and grading standards of plant materials in this specification must conform with the "American Standard for Nursery Stock" by the American Association of Nurserymen.

1.02 Submittals

- A. When required in the plan notes or details, material or product samples must be submitted by the Contractor for approval by the Landscape Architect.
- B. The Landscape Architect shall review the materials or product samples submitted and shall deliver the right to compare the submitted materials with the materials delivered to the project site. If the materials delivered to the project site are not of the same type, consistency and quality as the submitted samples, the Landscape Architect will have the right to reject said products and require the Contractor to provide materials from another source.

1.03 Product Delivery, Storage & Handling

- A. Storage of Materials: Plant materials will be permitted to be stored at the project site in location determined by the Owner, but must be protected by the Contractor from theft, damage or vandalism. Plant materials that are stolen, or damaged in any way must be replaced by the Contractor at no additional expense to the Owner. Supplies, including but not limited to marking paint, fertilizer, insecticides, or other chemicals must be stored off site and transported to the site each day for use.
- B. Inspections:

- 1. All plant materials shall be subject to inspection and approval by the Landscape Architect or the Owner's Representative at the point of growth nursery or the project site, prior to installation. Should any plant materials be installed prior to inspection, then the Contractor will assume full responsibility for their replacement, including excavation, hauling and new materials, should they be found to be unacceptable.
- 2. Should any plant materials be found to be unacceptable during the on-site inspection, then they shall be replaced by the Contractor at no additional expense to the Owner.
- 3. The Contractor, at their expense can also arrange for the inspection of plant materials at local point of growth nurseries, which must be located within a fifty (50) mile radius of the project site. The Contractor must pre-tag all shade, ornamental and evergreen trees and a sample of shrubs and perennial materials to be used for the project. The Landscape Architect will review the pre-tagged plant materials and make a decision regarding their acceptability for the project. Should any pre-tagged plant materials not be acceptable, then the Contractor will be responsible for locating other samples for review.
- 4. The Contractor must request the Landscape Architect's attendance at least ten (10) working days in advance for all point of growth nursery inspections.
- 5. The entire cost of the inspections will be borne and paid for the Contractor including Architect's hourly cost of \$150.00/hour, unless otherwise waived by the Architect or paid for directly by the Owner.
- 6. A representative of the Contractor must be present during all plant material inspections.

C. Digging and Handling of Plant Material

- 1. All shade trees, ornamental trees and evergreen trees must be balled and burlapped. Shrubs may be balled and burlapped or container grown. Perennials and groundcovers shall be grown in flats or pots.
- 2. Plant materials with cracked or broken balls will not be accepted.
- 3. All balled and burlapped plants that cannot be planted immediately upon delivery shall be headed-in with mulch material and must be watered daily until planted. Plant materials that have been stored on site for a period longer than thirty (30) days will not be accepted.
- 4. All plant materials must be delivered to the project site in covered trailers or protected by a tarp or appropriate coverings during transit.
- 5. Plant materials must be marked for identification with their name or their appropriate key symbol, which can be found on the plant list.

Section 32 93 00 - Plants, continued

1.03 Protection

- A. All plant materials must be protected by the Contractor from theft or vandalism until the completed planting has received Preliminary Acceptance. Any plant material that is stolen or vandalized will be replaced by the Contractor at no additional expense to the Owner.

1.04 Guarantee

- A. Plant materials must be guaranteed to grow and thrive for a period of one year from final acceptance. Any plant materials that are in decline as determined by the Landscape Architect or die during this Guarantee Period must be replaced by the Contractor at no additional expense to the Owner, and will be guaranteed for an additional one (1) year period.
- B. The Contractor will be responsible for repairing any damage to turf or pavements caused by plant material replacement.

2.0 Products and Materials

- A. Water: The Contractor will be required to supply water including all meters, hoses and connections, etc. necessary to water the landscape plantings.
- B. Peat Moss or Humus: Commercial type sphagnum Peat Moss.
- C. Fertilizer: Agriform Tablets by the Scotts Company, LLC, with the following analysis:

Nitrogen	20%
Phosphoric Acid	10%
Potash	5%
- D. Mulch: A double shredded hardwood bark mulch material shall be used. The Contractor shall submit a sample to the Landscape Architect for approval.
- E. Topsoil: Topsoil required for planting mixture must be pulverized, clean soil, free of weeds, stalks, and other debris. The Contractor may submit a sample to Landscape Architect for approval.
- F. Planting Mixture: Planting mix soil shall consist of topsoil, topped with three (3) inch layer of One Step Soil Conditioner with Mycorrhizae as produced by Midwest Trading Horticultural Supplies, Inc. Till in three (3) inch layer of One Step Soil Conditioner to a depth of twelve (12) inches within topsoil fill. Fertilizer Tablets shall be included in the installation in accordance with manufacturer's instructions.
- G. Plant Materials: All plant materials used for the project must be nursery grown at a location within a fifty (50) mile radius of the project site.

- 1. All plant materials used for this project must be freshly dug or container grown.
- 2. All plant materials must have a typical growth habit, be appropriately branched and densely foliated and shall be disease and pest free.
- 3. All plants must conform to the sizes contained on the plant list and the requirements set forth in the American Standard for Nursery Stock.
- 4. Plant material substitutions may only be made with the written approval of the Landscape Architect. The Contractor must submit all requests for plant material substitutions in writing to the Landscape Architect.

- H. Pre-Emergence Herbicide: Shall be a granular form of Preen Garden Weed Preventer. This granular weed preventer will be applied after mulch installation in all planting beds at a rate of one (1) ounce per ten (10) square feet. Immediately water in after installation. Follow manufacturer's installation instructions.

3.0 Execution

A. Plant Material Layout and Location:

- 1. Prior to any installation, the Contractor must locate all plant materials using wooden lathes or flags. The Landscape Architect or the Owner's Representative will review and approve plant material locations.
- 2. The Contractor must utilize J.U.L.L.E., the local municipality or the Owner's representative to locate all utilities prior to any excavation.

B. Planting Hole Excavation:

- 1. The Contractor must excavate as necessary for installation of plant materials. All rock, broken concrete and similar debris must be removed from planting holes and hauled from the site at no additional expense to the Owner.
- 2. All excess soils generated from planting operations must be hauled from the site at no additional expense to the Owner.

Section 32 93 00 - Plants, continued

3.01 Installation

- A. Planting Seasons:
 - Deciduous Plants must be planted during the following dates: April 1st to June 1st and October 1st to December 15th.
 - Evergreen Plants must be planted during the following dates: April 1st to May 15th and September 1st to October 1st
 - The planting periods indicated may be extended due to weather conditions or other factors, which must be approved by the Landscape Architect.
 - The Contractor will be relieved of his guarantee responsibility should the Owner require plant material installations to be completed during other times than the planting periods indicated.
- B. Planting:
 - All shade trees, ornamental trees, evergreen trees, shrubs and perennials shall be planted in holes excavated at least twice the width of the diameter of the ball or container and deep enough so that the top of the ball or soil in the container is at or just above existing grade.
 - Install Agriform fertilizer tablets in excavated holes after filling half way up the root ball. Follow manufacturer's Application Plates.
 - All twine or rope must be cut and removed and the burlap folded away from the top of the ball. The excavation must be backfilled with the planting mixture and watered. Any settlement will be filled with planting mixture.
 - A four (4) inch deep saucer, similar to the diameter of the planting hole shall be created using planting mix.
 - Groundcovers: All perennial and groundcover beds shall be filled to a depth of six (6) inches. Three (3) inches of mulchroom or similar compost must then be filled into the soil and the planting bed raked smooth prior to planting.
- C. Pruning:
 - All trees and shrubs shall be pruned to enhance the natural character of the plant, and to remove any broken or damaged branches.
- D. Mulching:
 - All shade trees, ornamental trees, and evergreen trees shall be mulched. The mulch shall cover the planting area with a minimum of three (3) inches and not more than four (4) inches in depth. No mulch material may cover the trunk or plant stem.
 - All massed plantings will be mulched with a minimum of three (3) inches and not more than four (4) inches of mulch. The entire bed shall be mulched under the plants. A spaded edge must be produced in the bed shape as indicated on the plans.
 - Groundcover areas will not receive any mulch.

E. Pre-Emergence Herbicide Application:

- 1. Granular weed preventer will be applied after mulch installation in all planting beds at a rate of one (1) ounce per ten (10) square feet. Immediately water in after installation. Follow manufacturer's installation instructions.

F. Wrapping, Staking & Guying:

- 1. All shade and single stem ornamental trees must be wrapped with burlap or an approved tree wrap from the base of the tree to the start of the first branches.
- 2. Evergreen trees six (6) feet high and larger must be staked and guyed. Deciduous trees four (4) inch caliper and larger must be staked and guyed.
- 3. When required, a three-point guying system shall be used consisting of galvanized wires, hose loops, turn buckles and wooden stakes. Other commercial staking and guying systems may be used if presented by the Contractor and approved by the Landscape Architect. All guy wires must have high visibility orange flagging and all stakes must be painted with high visibility orange paint.

Section 32 93 00 - Plants, continued

3.02 Maintenance, Clean-Up and Acceptance

- A. Maintenance of plant materials:
 - Maintenance of plant materials will begin upon completion of the installation of the last plant material and will continue for a period of sixty (60) days. Maintenance periods that have not been completed by November 1st, will be completed the following year, beginning on May 1st.
 - During the maintenance period, the Contractor must water and straighten all plants, as well as weed planting beds and tree rings.
 - The Owner will be responsible for all maintenance requirements after this required sixty (60) day period.
- B. Clean Up:
 - All debris generated during the installation of plant materials must be removed from the site.
 - All pavements and walks must be swept after each days work. Upon completion of the work, all pavements must be washed to removal mud or dirt.
- C. Preliminary Acceptance:
 - Upon completion of the installation of all plant materials, the Contractor must submit his request for an inspection to determine preliminary acceptance of the completed work. All such requests must be submitted to the Landscape Architect at least 10 (ten) days in advance.
- G. Final Acceptance:
 - Upon completion of the maintenance period the Contractor must submit his request for final acceptance of the completed work. All such requests must be submitted to the Landscape Architect at least 10 (ten) days in advance.
 - The Landscape Architect will review the work and determine whether the work should receive Final Acceptance. Should the Landscape Architect find conditions that are not acceptable, the Contractor will be notified in writing and will be required to make changes to correct the unacceptable condition.

Section 32 92 00 - Turf and Grasses

1.0 General Description

This work shall consist of cultivating and fine grading of topsoil, rock and debris removal, fertilizing and seed installation and hydromulch installation or sod installation.

1.1 Submittals

The Contractor must submit fertilizer mixture tags, seed mixture tags or sod specifications from the sod nursery for approval by the Landscape Architect or the Owner's Representative. Products must be approved by the Landscape Architect or the Owner's Representative prior to any installation.

1.2 Product Delivery, Storage and Handling

All sod, seed, fertilizer and other materials to be used for the installation must be protected from weather, damage during transit and vandalism while stored at the project site. Any materials that have been damaged by any of the above will not be acceptable for use on the project.

1.3 Protection

The Contractor will be responsible for the protection of any seeded, sodded, or hydromulched areas until the final acceptance of the installation. The Contractor may only use barricades, device or products that are acceptable to the Owner or the Landscape Architect for protection of seeded, sodded or hydromulched areas.

2.0 Products

- A. Water: The Contractor will be required to supply water including all meters, hoses and connections, etc. necessary to water the turf areas.
- B. Sod:
 - All sod used for this project must be blended Blue Grass as specified below, with no more than 5% weeds or other grasses. The sod must be free of rocks, stones or debris and must have a 1" minimum thickness of soil and an adequate root system. Sod must be cut into one (1) square yard sections. Big roll sod in widths of 30' are also acceptable.
 - All sod used must contain equal percentages of at least four different varieties of the following:
 - Midnight
 - Columbia
 - NuGlade
 - Rugby II
 - Bluesmoon
 - Nubius
 - All sod must be supplied by growers within a fifty (50) mile radius of the project site. The sod must be delivered to the project site on skids or pallets. Dumping of sod from any vehicle is not permitted. Damaged sod or any sod that appears to be dry or in decline will not be accepted. All sod must be planted within forty-eight (48) hours after it has been harvested.

Section 32 92 00 - Turf and Grasses

C. Seed:

- 1. Grass seed mixture must be composed of the following seeds mixed in proportions by weight, with the following minimum percentages of purity and germination:

Proportion By Weight	Name of Grass	Purity Percent	Germination
80%	Blended Blue Grass (Midnight, Columbia, NuGlade, Rugby II, or Bluesmoon) Use at least 4 Varieties.	90%	80%
20%	Perennial Ryegrass (Roadrunner Manhattan II, Charger II And Catalina) 10%	98%	80%

General or Common Areas:

- 1. Upon completion of the installation of all plant materials, the Contractor must submit his request for an inspection to determine preliminary acceptance of the completed work. All such requests must be submitted to the Landscape Architect at least 10 (ten) days in advance.
- 2. All seed must be delivered to the project site in unopened bags, which include identification tags or labels.

Fertilizer:

- 1. Commercial fertilizers must contain the following percentages by weight:

Name of Fertilizer	Nitrogen	Phosphoric Acid	Potash
Prior to Seeding 10-18-18 with 30% Nutralene	15%	10%	10%
After Seeding 25-0-10	25%	0%	10%
	Phosphoric Acid	10%	Sulfur
		10%	10%
- 2. All fertilizer must be delivered to the project site in unopened bags, which include identification tags or labels.

Hydro-Mulch:

- 1. Hydro-Mulch: Hydro-mulch must be composed of wood cellulose fiber and must not contain any chemicals that prohibit grass seed growth. Hydro-mulch must also include a tackifier and may be pigmented green to permit the verify of application. When applied, the hydromulch must form a cover that absorbs water and permits percolation of water into the soil.

3.0 Execution

A. The Contractor must inspect all final grading prepared by the Grading Contractor and request approval from the Landscape Architect or the Owner's Representative to begin seed or sod installation. Any disparities noted in the final topsoil grades must be reviewed by the Landscape Architect and resolved prior to the commencement of seed or sod installation.

B. Fine Grading:

- 1. All areas to be seeded or sodded shall be prepared by pulverizing the soil to a minimum depth of three (3) inches. This process shall include rototilling and/or disking, and raking and dragging the soil to produce a smooth bed for seeding or sod installation. Regardless of whether the area will receive seed or sod, the soil preparation must be consistent. All rocks and other debris 3/4 inch in diameter or greater must be removed from the surface prior to seeding or sodding.
- 2. Should previously conditioned soil become compacted by weather, construction equipment or other means, the area shall be re-conditioned as indicated above.

3.1 Installation

- A. Planting Seasons:
 - Seeded Areas: Seed may be installed from March 15th through May 14th and from August 15th through October 1st.
 - Sodded Areas: Sod may be installed from March 1st through June 15th and from August 15th through November 1st.
 - If requested in writing and approved by the Landscape Architect or the Owner's Representative, the planting seasons listed above may be extended due to favorable weather conditions.
- B. Fertilizing:
 - Fertilizer must be mechanically broadcast or spread and filled into the top three (3) inches of soil at the rate of 5.5 lbs. per 1,000 square feet or 240 lbs/acre.

-----End of Section-----

Section 32 92 00 - Turf and Grasses, continued

C. Seeding:

- 1. Common Area and Athletic Field Seed shall be mechanically applied at the rate of 5.0 lbs. per 1,000 square feet of area or 220 lbs/acre. The seed shall be spread evenly and lightly raked into the soil.

D. Sodding:

- 1. Sod shall be installed tightly together with the joints on the long dimension of the sod staggered in a fashion equal to running bond brick.
- 2. After the sod is laid, it must be watered thoroughly and rolled if necessary to adhere the sod to the soil.

E. Hydro Mulch:

- 1. Hydro Mulch must be applied over all seeded areas at the rates designated below:
 - On Slopes less than 5 to 1: Apply at a rate of 1,500 lbs. per acre.
 - On Slopes Exceeding 5 to 1: Apply at a rate of 2,000 lbs. per acre.
- 2. A tackifier or acceptable product must be used with the hydro-mulch at the following rates:
 - On Slopes less than 5 to 1: Apply at a rate of 15 gallons per acre.
 - On Slopes Exceeding 5 to 1: Apply at a rate of 20 gallons per acre.

3.2 Maintenance, Clean-Up and Acceptance

A. Maintenance: The Contractor must provide maintenance of seeded or sodded areas until the date of final acceptance, including the following:

- 1. Seeded Areas:
 - Watering of turf.
 - Re-filling with topsoil and the overseeding of washed out or rutted areas.
 - Re-fertilizing with a commercial fertilizer at the rate of 5.5 lbs. per 1,000 square feet (240 lbs/acre) on one occasion after sufficient germination.
 - Overseeding any turf areas that haven't germinated sufficiently or which fail to support a uniform and consistent stand of grass. Any such areas must be re-seeded with the similar seed mixture and rate initially applied. Re-seeding must continue until all turf areas are covered with a uniform and consistent stand of grass. A uniform and consistent stand of turf will be defined as turf that is full and even with no bare areas.
 - All seeded areas must be maintained as noted above for a period of Sixty (60) days after installation or until a uniform and consistent stand of grass has been established.
- 2. Sodded Areas:
 - Watering of turf.
 - Re-fertilizing with a commercial fertilizer at the rate of 5.5 lbs. per 1,000 square feet (240 lbs/acre) on one occasion.
 - Replacement of sod, which fails to grow or is in a state of decline using the same sod mixture as previously installed.
 - All sodded areas must be maintained as noted above for a period of Thirty (30) days after installation or until a uniform and consistent stand of grass has been established. A uniform and consistent stand of turf will be defined as turf that is full and even with no bare areas.

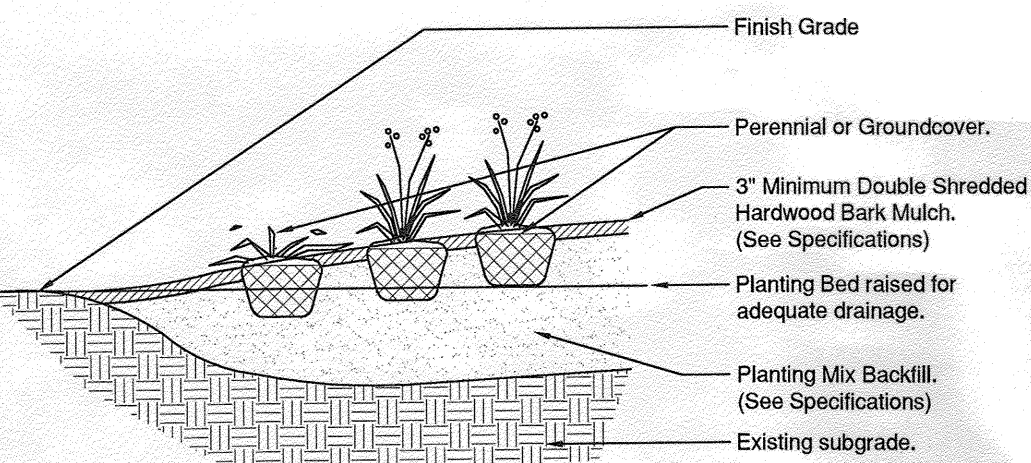
B. Clean Up:

- 1. All debris generated by this work shall be removed from the site.
- 2. All pavements and walks must be clean and washed of any mud or heavy concentration of soil.
- 3. All planting beds must be edged or spaded to form a smooth curvilinear shape.

C. Final Inspection and Acceptance:

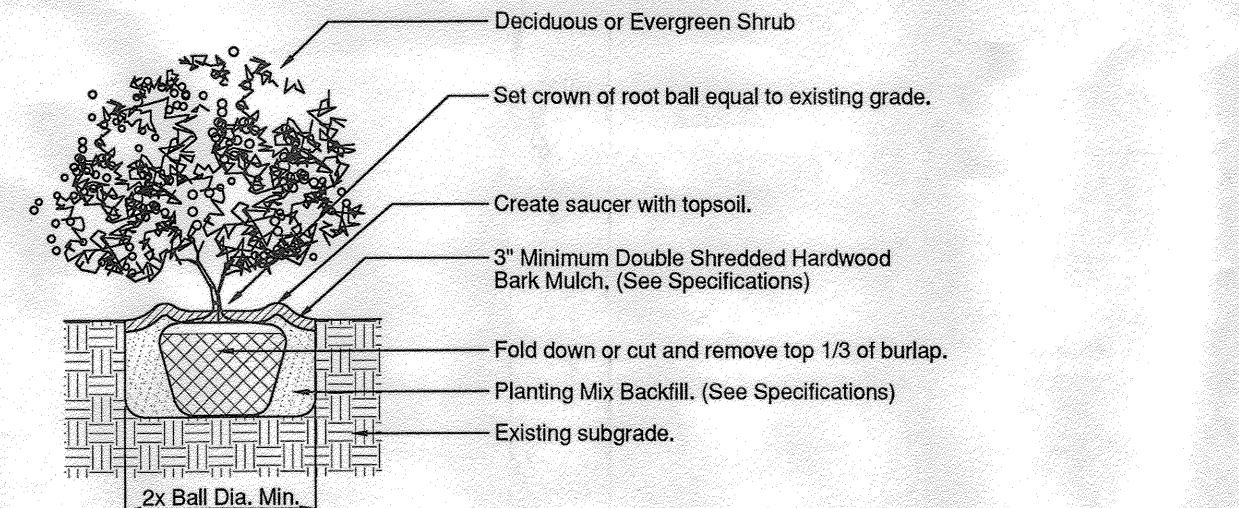
Upon completion of the required maintenance period, the Contractor must make a written request to the Landscape Architect to schedule a final inspection of the turf areas. The Contractor will be required to make this request a minimum of ten (10) working days prior to the inspection. If upon inspection, the Landscape Architect feels that the turf areas are not established within specification, the Contractor will be required to re-work and maintain those unacceptable areas until a final acceptance has been granted.

-----End of Section-----



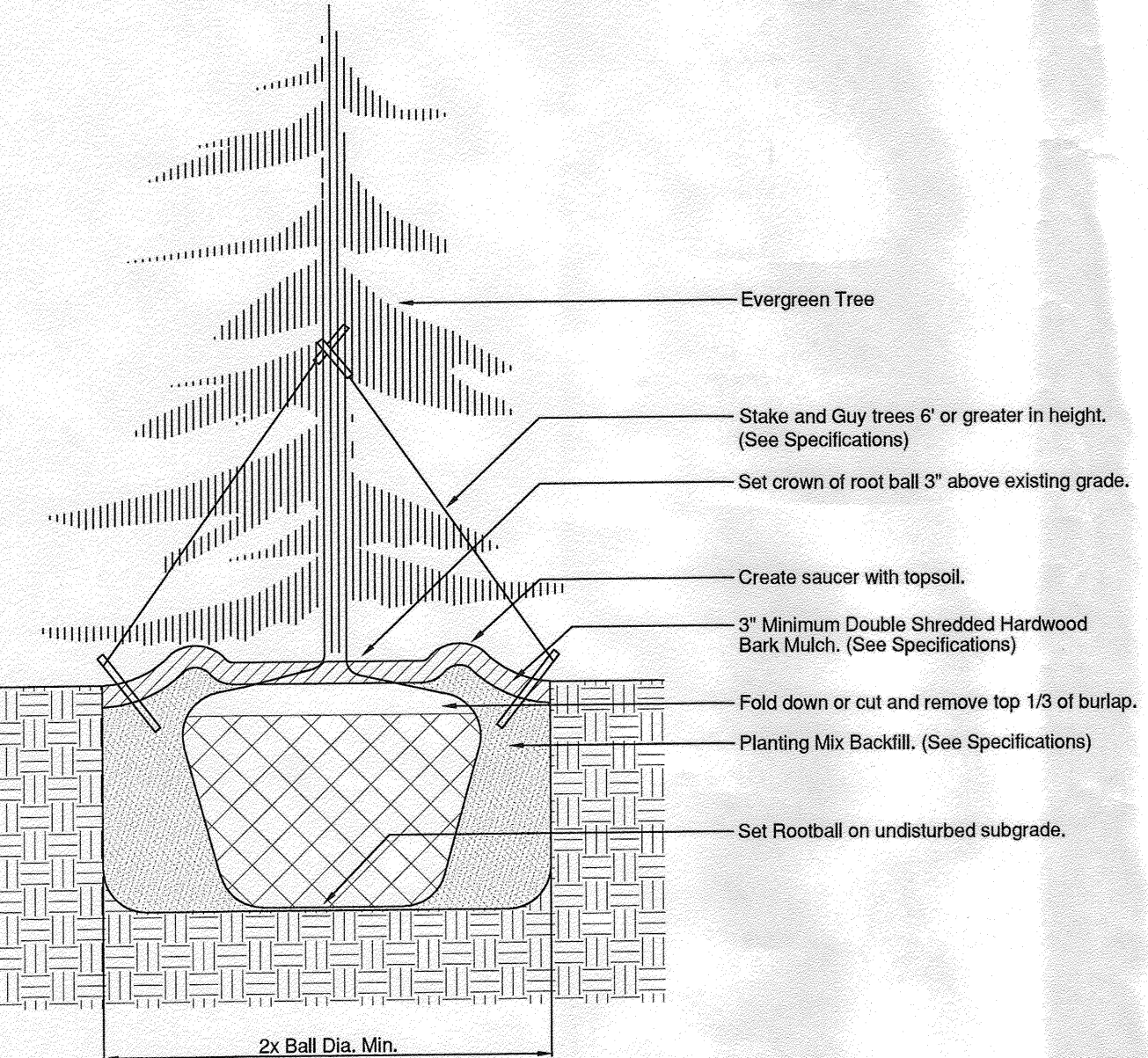
Perennial Planting

Not to Scale



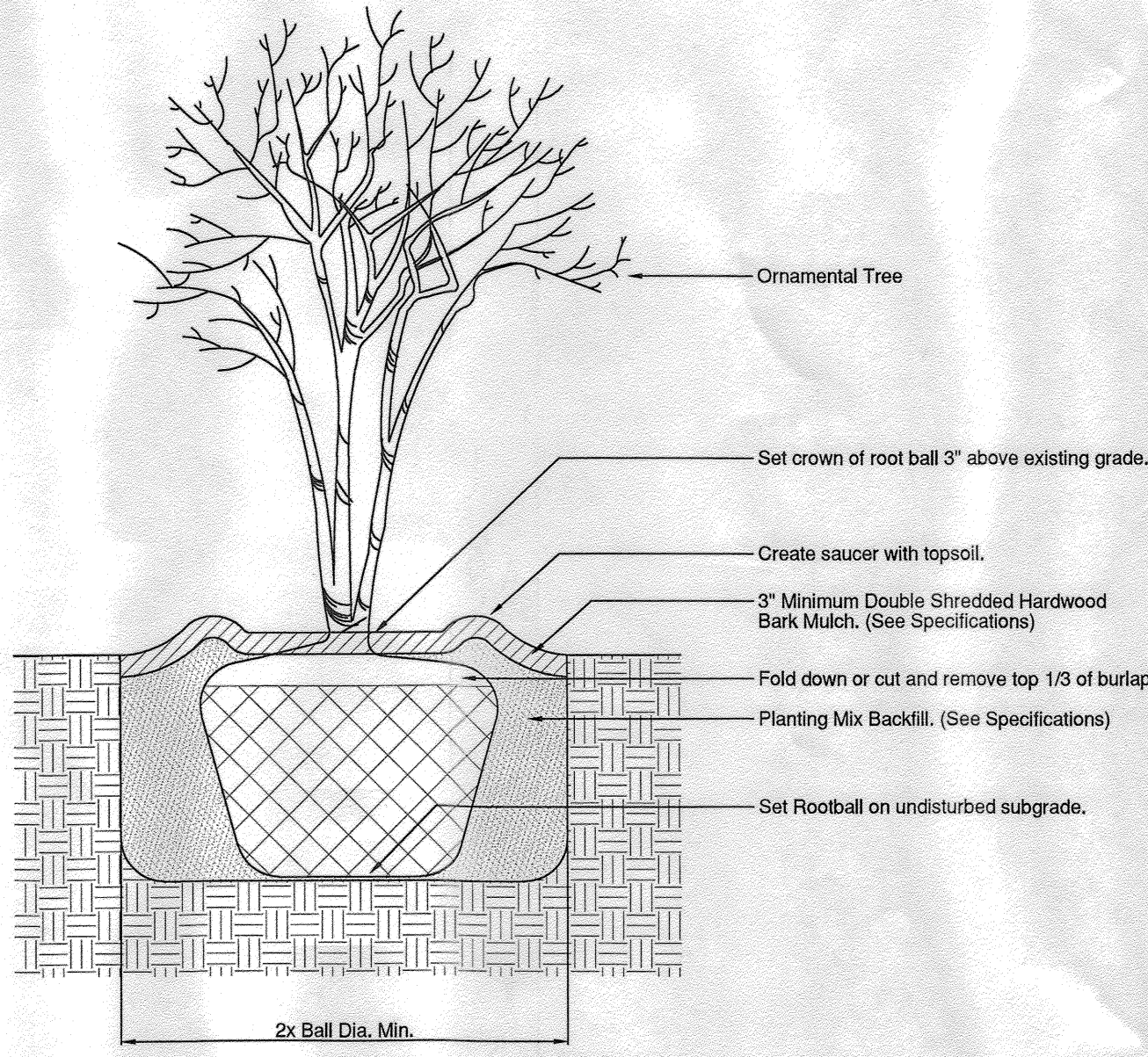
Shrub Planting

Not to Scale



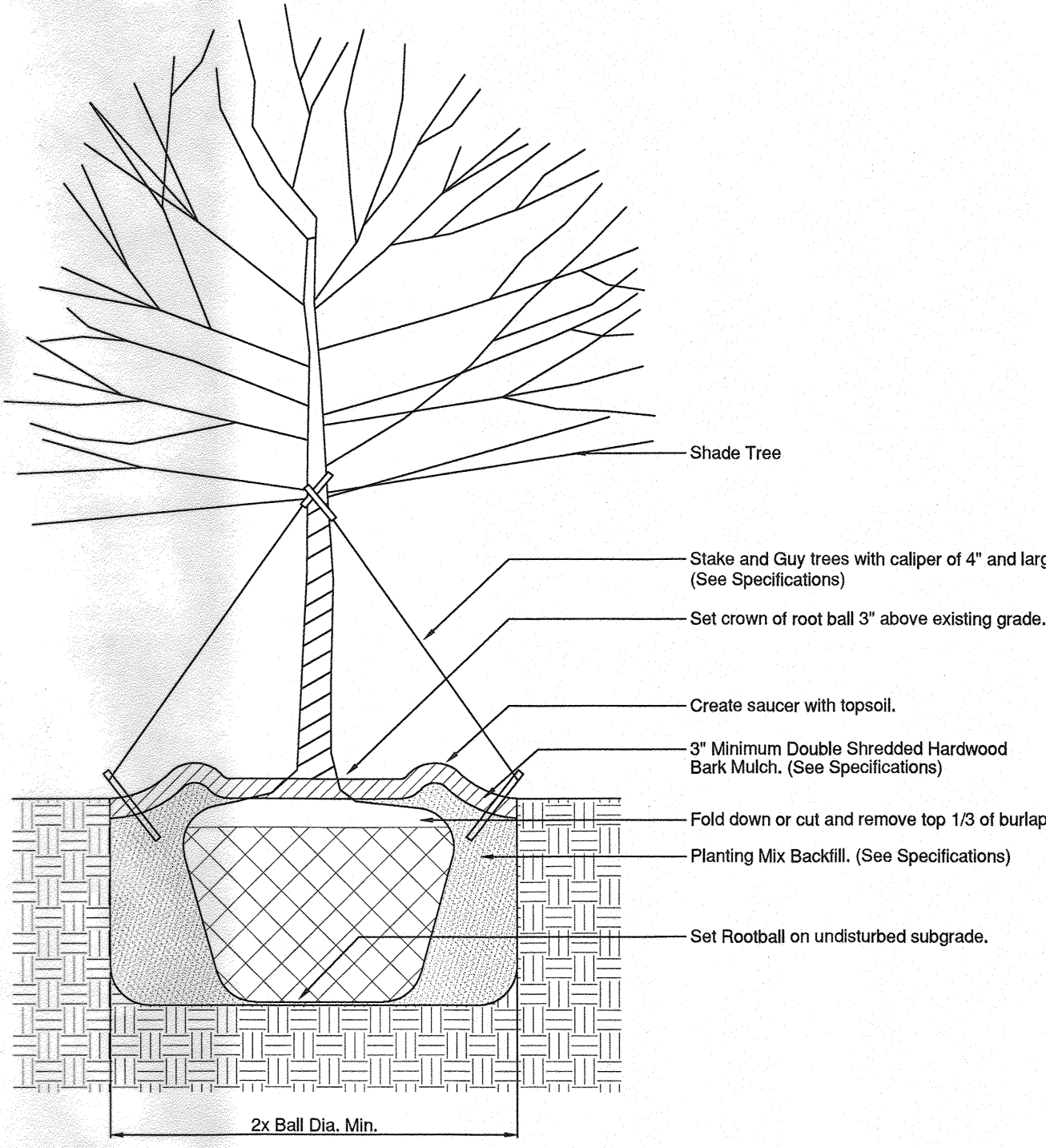
Evergreen Tree Planting

Not to Scale



Ornamental Tree Planting

Not to Scale



Shade Tree Planting

Not to Scale

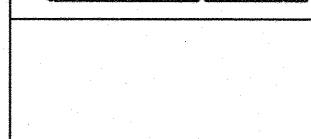
BOARD APPROVED

Case No: 2014-0084
Date: 4/6/15

W/Conditions:
W/Out Conditions:

VILLAGE OF ORLAND PARK

NO.	DATE	BY	REVISIONS
1	08-22-14	B.C.	ISSUED FOR PERMIT
2	12-10-14	B.C.	ISSUED FOR OWNER REVIEW
3	01-16-15	B.C.	ISSUED FOR OWNER REVIEW
4	02-06-15	B.C.	REISSUED FOR PERMIT
5	03-16-15	B.C.	LANDSCAPE REVIEW COMMENTS



RIDGEWAY PETROLEUM
CSTORE & CARWASH
183RD PLACE & WOLF ROAD
ORLAND PARK, IL

Ridgeway

START DATE:	09-11-13
SCALE:	AS SHOWN
DRAWN:	BC,KND
CHECK:	CK
JOB:	D13062
SHEET:	L-2 4 OF 4