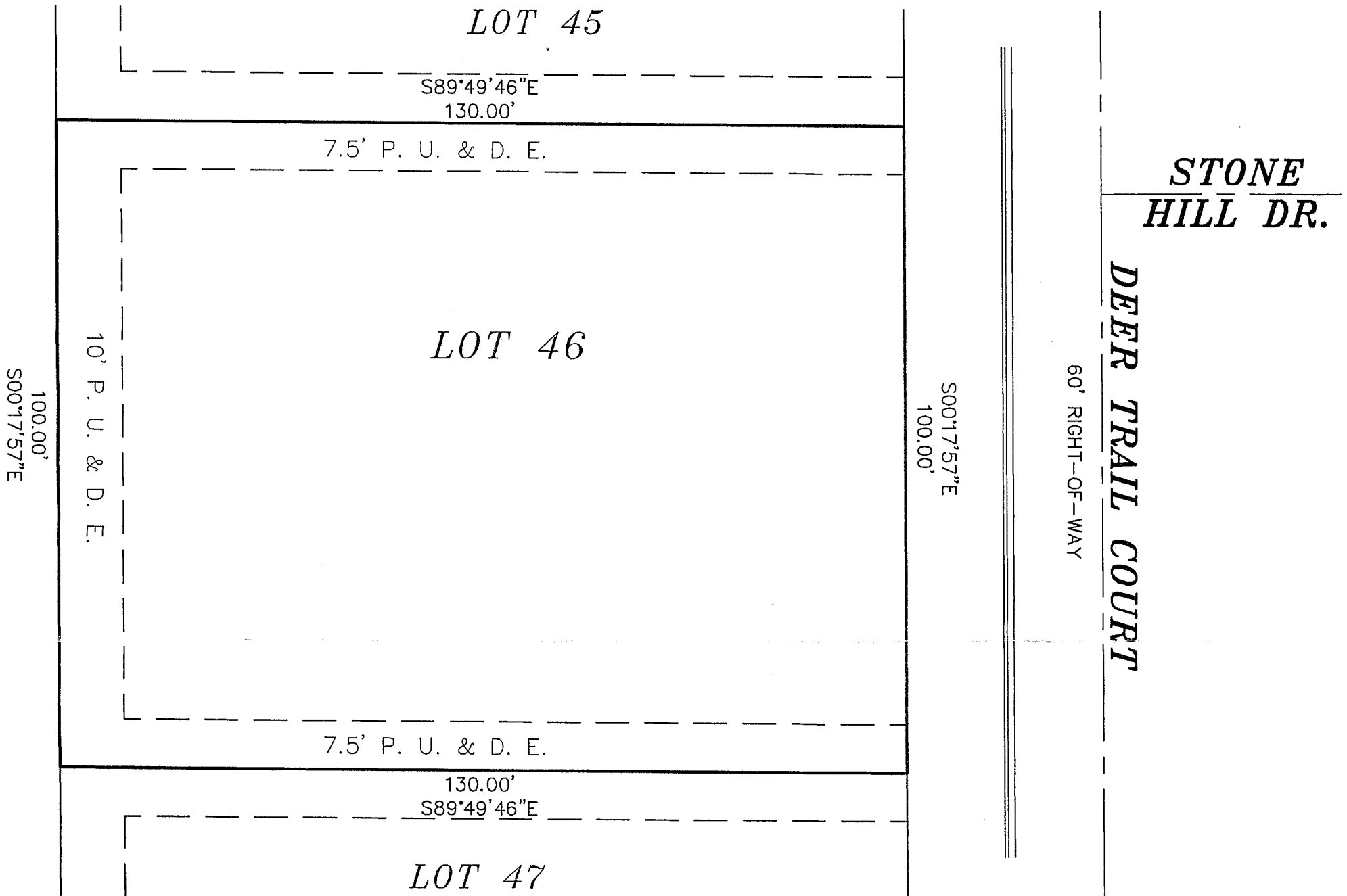


# PLAT OF SURVEY

## LEGAL DESCRIPTION

LOT 46 IN OLDE MILL PHASE III, A SUBDIVISION OF PART OF THE SOUTHWEST QUARTER OF THE SOUTHEAST QUARTER OF SECTION 29, TOWNSHIP 36 NORTH, RANGE 12 EAST OF THE THIRD PRINCIPAL MERIDAN, ACCORDING TO THE PLAT THEREOF RECORDED AUGUST 28, 2012, AS DOCUMENT NUMBER 1224129022 AND CERTIFICATE OF CORRECTION RECORDED SEPTEMBER 14, 2012 AS DOCUMENT NUMBER 12258050, IN COOK COUNTY, ILLINOIS.



P.U. & D. E. = PUBLIC UTILITY AND DRAINAGE EASEMENT

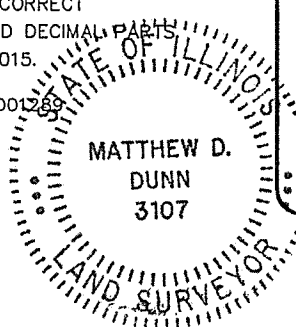
BOUNDARY DIMENSIONS ARE BASED ON THE PUBLIC RECORDS AND/OR THE LEGAL DESCRIPTION. LEGAL DESCRIPTION ABOVE HAS BEEN PROVIDED BY THE CLIENT AND MUST BE COMPARED WITH DEED AND/OR TITLE POLICY. NO DIMENSIONS SHALL BE ASSUMED BY SCALE MEASUREMENTS ON THIS DOCUMENT.

DISCREPENCIES FOUND BETWEEN FIELD CONDITIONS AND DIMENSIONS SHOWN ON THIS DOCUMENT SHALL BE REPORTED TO THIS OFFICE IMMEDIATELY. LIABILITY OF LANDTECH CONSULTANTS ASSOCIATED WITH THIS DOCUMENT AND THE WORK IT REPRESENTS IS LIMITED TO THE COST OF PRODUCING IT.

LANDTECH CONSULTANTS LTD. AN ILLINOIS PROFESSIONAL DESIGN FIRM, SURVEY AND PROFESSIONAL ENGINEERING CORP. # 184-001289 HEREBY CERTIFIES THAT THE ABOVE DESCRIBED PROPERTY HAS BEEN MEASURED IN THE FIELD AND THAT THIS DOCUMENT IS A TRUE AND CORRECT REPRESENTATION OF SAID FIELD WORK. ALL DIMENSIONS ARE GIVEN IN FEET AND DECIMAL PARTS THEREOF. LANDTECH CONSULTANTS CORPORATE LICENSURE EXPIRES APRIL 30, 2015.

DATED THIS 18TH DAY OF MAY, 2013 CORP. LIC. # 184-001289

BY ITS SURVEYOR: MATTHEW D. DUNN IL. SURVEYOR # 3107  
MY LICENSE EXPIRES NOVEMBER 30, 2014



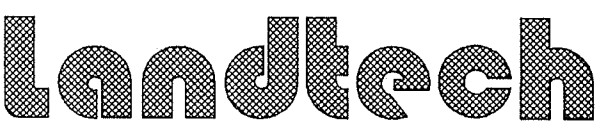
JOB NUMBER 120906-46

PREPARED FOR CELTIC DEV.

COPYRIGHT 2005 LANDTECH CONSULTANTS LTD.

SCALE: 1" = 20'





**Landtech**  
Consultants LTD.

ENGINEERING • SURVEYING • LAND PLANNING

13711 W. 159th STREET LOCKPORT, IL. 60441  
PHONE (708)301-6200 FAX (708)301-6204