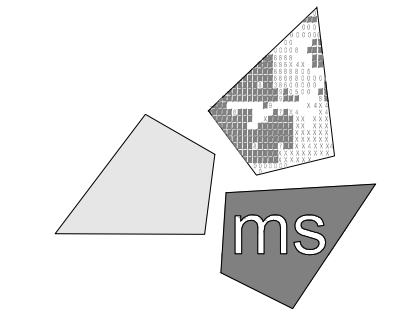


Issued:	Date:
Planning Submittal	05/28/21
Planning Response	08/06/21
Planning Response	10/15/21

Revisions:	Date:

**DO NOT SCALE PLANS**  
 Copying, Printing, Software and other processes required to produce these prints can stretch or shrink the actual paper or layout. Therefore, scaling of this drawing may be inaccurate. Contact ms consultants with any need for additional dimensions or clarifications.



**ms consultants, inc.**  
 engineers, architects, planners  
 2221 Schrock Road  
 Columbus, Ohio 43229-1547  
 phone 614.898.7100  
 fax 614.898.7570

DRAWN BY: MYG/MEM  
 REVIEWED BY: NAL

Seal



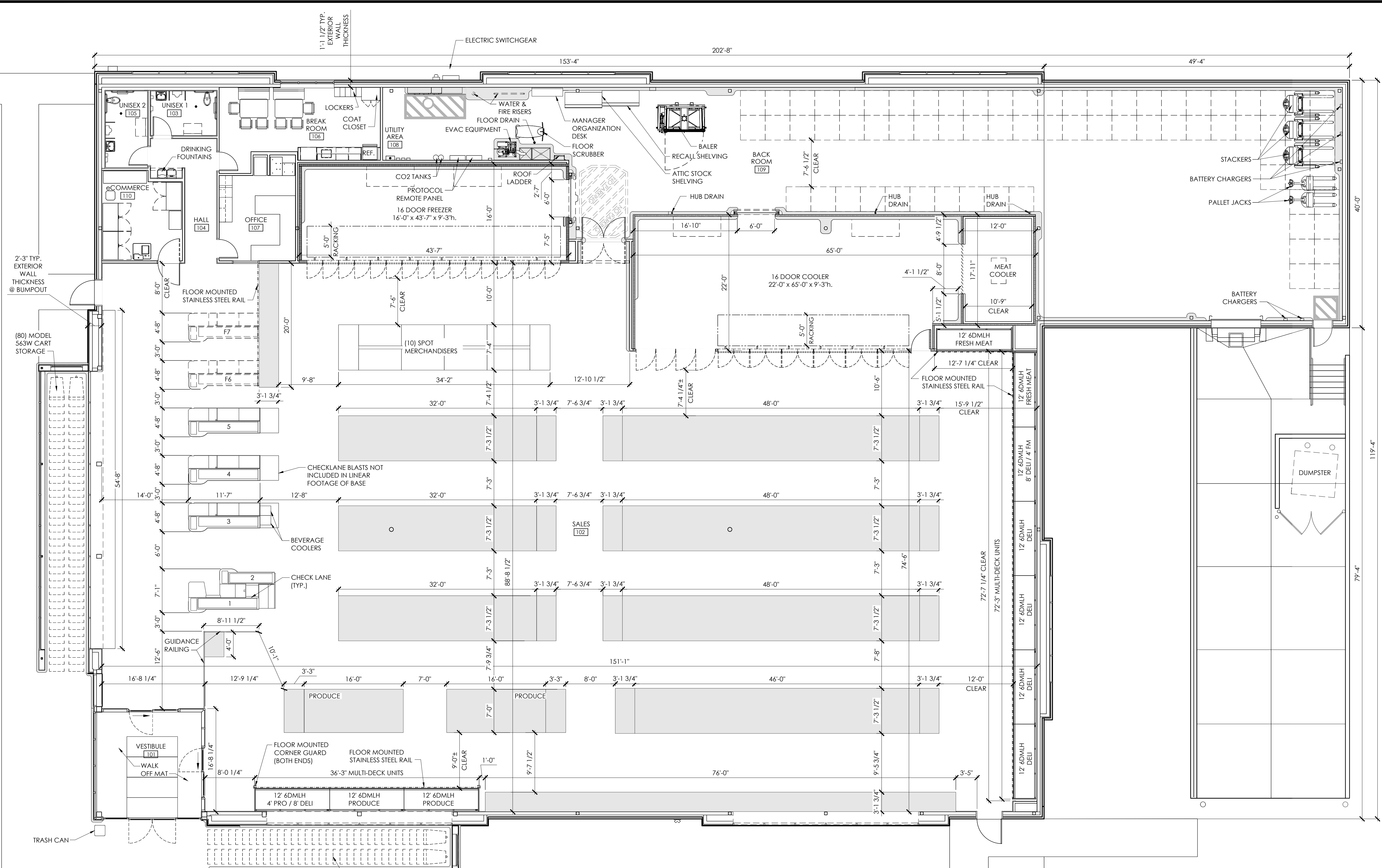
**ALDI Inc.**  
 1 ALDI Drive  
 Dwight, IL 60420  
 (815) 741-6000  
 (815) 741-6021 Fax

ALDI Inc.  
 Orland Park, IL  
 179th Street & Wolf Road  
 Orland Park, IL 60467  
 Cook County  
 PIN: 27-31-202-021-000-022  
 Project Name & Location:

**Operations Plan**

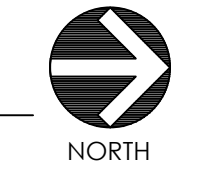
Drawing Name:  
 Prototype Rls. 06/03/20 Project No. 40200-91  
 Type: LHSD-V7ER

Scale: As Noted Drawing No. A-131



- NOTES:**
- THIS DRAWING IS FOR GENERAL FIXTURING LAYOUT AND REFERENCE TO EQUIPMENT ONLY. ALL INFORMATION IS FOR ALDI OPERATIONAL USE ONLY AND SHALL NOT BE USED FOR CONSTRUCTION OR BIDDING PURPOSES.
  - ALL DIMENSIONS TO WALLS ARE TO FACE OF STUD UNLESS NOTED OTHERWISE.
  - THIS FACILITY DOES NOT CONTAIN A BAKERY, A BUTCHER, A DELI OR FISH COUNTER.
  - ALL FOOD IS PREPACKAGED. THERE IS NO ON SITE FOOD PREPARATION.
  - GONDOLA LOCATIONS ARE MEASURED FROM THE FACE OF THE STAINLESS STEEL PRICE TAG MOLDING (SSPFM).

**Operations Plan**  
 SCALE: 1/8" = 1'-0"



ITEM	V7.0 PROTOTYPE
LINEAR FOOTAGE OF BASE (PRODUCE INCLUDED)	828'-10"
ASSUMED PALLET STORAGE	72
BUILDING DIMENSIONS	119'-4" x 153'-4"
SALES FLOOR DIMENSIONS	74'-6" x 151'-1"
LENGTH OF MULTIDECK	120'
COOLER MILK DOORS	4
COOLER GENERAL DOORS	12
FREEZER GENERAL DOORS	16
SPOT MERCHANDISERS	10
CART STORAGE	144

OCCUPANCY USE	ROOM NAME	SQUARE FOOTAGE
MERCANTILE (M)	SALES / VESTIBULE	12,541
	UNISEX 2	84
	UNISEX 1	76
	HALL	137
SUBTOTAL (MERCANTILE)		12,838
BUSINESS (B)	OFFICE	190
	BREAK ROOM	305
	ECOMMERCE	179
SUBTOTAL (BUSINESS)		674
STORAGE / STOCK (S-1)	BACKROOM	3,808
	COOLER	1,313
	FREEZER	648
SUBTOTAL (STORAGE / STOCK)		5,769
SUBTOTAL (OCCUPANCIES)		19,281
EXTERIOR / INTERIOR WALLS / UNOCCUPIED SPACE		1,259
BUILDING SQUARE FOOTAGE		20,540
EXTERIOR CANOPY		1,278
TOTAL SQUARE FOOTAGE (INCLUDING CANOPY)		21,818

PLOTTED: 10/14/2021 2:34 PM

EXTERIOR FINISH SCHEDULE			
KEY	MATERIAL / MFG.	COLOR / NO.	NOTES
A1	PREFINISHED METAL COPING	A1 - SILVER - AT HIGH ROOF & CANOPY A1a - PETERSEN ALUM - MUSKET GREY - AT BRICK A1b - PETERSEN ALUM - #397C0290 CEDAR - AT NICHIIHA TOWERS A1c - PETERSEN ALUM - MUSKET GREY - AT BRICK ACCENT BUMPPOINTS	
A2	SPEC-BRICK CONCRETE MASONRY VENEER	(A2) 4"Wx4"Hx16"L GARDNER BLEND w/ HOLCIM "SMITH GRAY MORTAR ALT: SOLOMON "85 X DARK CHOCOLATE" (A2a) 4"Wx4"Hx16"L CHESAPEAKE BLEND w/ HOLCIM "SMITH GRAY MORTAR ALT: SOLOMON "85 X DARK CHOCOLATE" (A2b) 4"Wx4"Hx8"L GARDNER BLEND w/ HOLCIM "SMITH GRAY MORTAR ALT: SOLOMON "85 X DARK CHOCOLATE" (A2c) 12"Wx4"Hx16"L GARDNER BLEND w/ HOLCIM "SMITH GRAY MORTAR ALT: SOLOMON "85 X DARK CHOCOLATE"	
A3	PREFINISHED ALUM. SILL FLASHING	A3 - BRIGHT SILVER A3a - PETERSEN ALUM - MUSKET GREY	
A4	ALUMINUM STOREFRONT SYSTEM	ANODIZED ALUM.	
A5	MEMBRANE ROOFING	GRAY	TOP OF SLOPED ROOF, CANOPY ROOF, AND BACK OF RAISED ROOF PROJECTIONS
A6	METAL SOFFIT PANELS	A6 - SOLID PANELS - BRIGHT SILVER A6a - 1/2" VENTED PANELS - BRIGHT SILVER	
A7	EXTERIOR PAINT	SHERWIN WILLIAMS #6005 FOLKSTONE (240-C6)	
A8	ALUMINUM CURTAIN WALL SYTEM	ANODIZED ALUMINUM	
A9	ALUMINUM COMPOSITE PANEL	BRIGHT SILVER	PROVIDE PANEL JOINTS AS SHOWN - PROVIDE ONE PIECE TIGHT FIT EXTRUDED MOLDING INSTALLATION SYSTEM WITH CENTER REVEAL TRIM BETWEEN PANELS AND J TRIM AT PANEL EDGES.
A10	NICHIIHA FIBER CEMENT EXTERIOR CLADDING	VINTAGEWOOD "BARK"	PANELS SHALL EXTEND ONTO THE ROOF FOR THE FULL DEPTH OF THE BUMPPOINT
A11	BLRD-2	SAFETY YELLOW	
A12	BLRD-4		
A13	GUARD RAIL TYPE "A"	GALVANIZED STEEL	
A14	GUARD RAIL TYPE "B"	GALVANIZED STEEL	
A15	BLRD-3	GALVANIZED	

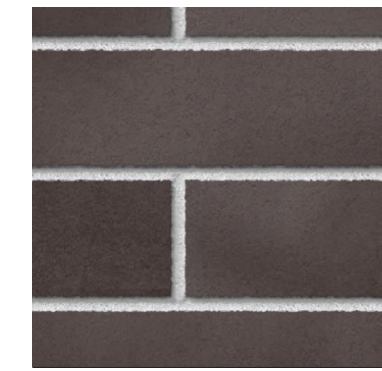
EXTERIOR FINISH SCHEDULE			
KEY	MATERIAL / MFG.	COLOR / NO.	NOTES
A16	DOCK LEVELER / SEAL AND BUMPERS	LEVELER - FACTORY FINISH / SEAL AND BUMPERS - FACTORY FINISH - BLACK	
A17	MASONRY CONTROL JOINT		MAX 20' OC
A18	SCUPPER, 14" OVERFLOW SCUPPER & DOWNSPOUT	MATCH COPING ABOVE	
A19	ARCHITECTURAL CAST STONE CAP	TANNERSTONE: AG-1	
A20	ALDI TOWER SIGN	BY SIGN VENDOR	7'-11 1/8" w. x 9'-5 1/2" h.; VERIFY SIGN SIZE PRIOR TO FRAMING OPENING
A21	CRTB	NATURAL	
A22	KNOX BOX	FACTORY FINISH	CONFIRM TYPE AND LOCATION WITH LOCAL FIRE MARSHAL
A23	AUTO DOOR SYSTEM & TRANSOM	ANODIZED ALUMINUM	
A24	NOT USED		
A25	8" X 8" PRE-FINISHED ALUM GUTTER	MATCH PREFINISHED METAL COPING	
A26	8" X 8" PRE-FINISHED ALUM DOWNSPOUT	MATCH PREFINISHED METAL COPING	TERMINATE AT CONC. SPLASH BLOCK
A27	ACP H/J TRIM / JOINT COVER		TYPICAL AT EDGES AND BUTT JOINTS OF ACP
A28	FIBER CEMENT PANEL BASE FLASHING	PETERSEN ALUMINUM - #CEDAR 397C0290 SPAY CODE	
A29	DUMPSTER ENCLOSURE		
A30	BLRD-1	SAFETY YELLOW	6" DIA. BOLLARD AT DUMPSTER GATE
A31	NICHIIHA CONTROL JOINT WITH "H" CLIP		
E1	EXIT DISCHARGE LIGHT	FACTORY FINISH	MOUNT @ 8'-0" A.F.F.
E2	WALL SCNCE	FACTORY FINISH	MOUNT @ 14'-8" A.F.F.
E3	JUNCTION BOX WITH COVER FOR FUTURE CARD READER		MOUNT CENTERED @ 46" A.F.F.
E4	UTILITY METERING & C.T.	FACTORY FINISH	
E5	EXTERIOR WALL PACK	FACTORY FINISH	MAN DOORS - MOUNT @ 9'-0" A.F.F., BREAK ROOM WINDOW @ 10'-0" A.F.F., LOADING DOCK - MOUNT @ 12'-0" A.F.F.
E6	EXTERIOR DUPLEX RECEPTACLE	FACTORY FINISH	MOUNT @ 11'-6" A.F.F. IN 4" SQUARE J-BOX
F1	FIRE DEPT. CONNECTION	FACTORY FINISH	
F2	MOTOR GONG	FACTORY FINISH	



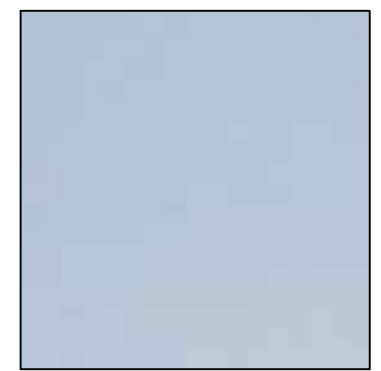
A2 - MASONRY VENEER: GARDNER BLEND



A4 - ALUMINUM STOREFRONT SYSTEM: ANODIZED



A2a - MASONRY VENEER: CHESAPEAKE BLEND



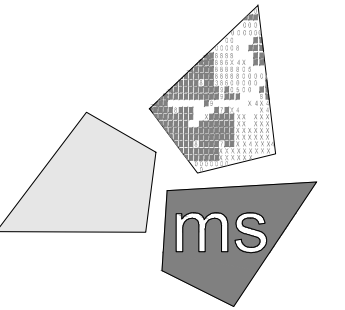
A9 - ALUMINUM COMPOSITE PANEL: SILVER



A10 - FIBER CEMENT EXTERIOR CLADDING: BARK

Issued:	Date:
Planning Submittal	05/28/21
Planning Response	08/06/21
Planning Response	10/15/21
Revisions:	Date:

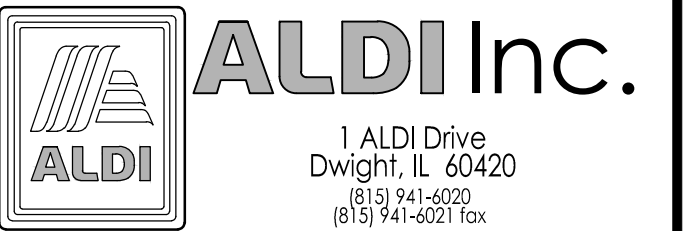
**DO NOT SCALE PLANS**  
Copying, Printing, Software and other processes required to produce these prints can stretch or shrink the actual paper or layout. Therefore, scaling of this drawing may be inaccurate. Contact ms consultants with any need for additional dimensions or clarifications.



**ms consultants, inc.**  
engineers, architects, planners  
2221 Schrock Road  
Columbus, Ohio 43229-1547  
phone 614.898.7100  
fax 614.898.7570

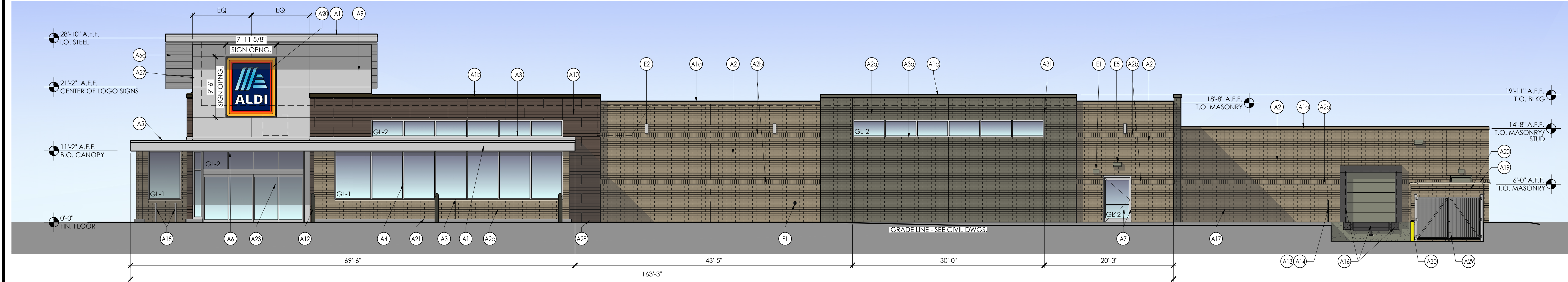
DRAWN BY: MYG/MEM  
REVIEWED BY: NAL

Seal



ALDI Inc.  
Orland Park, IL  
179th Street & Wolf Road  
Orland Park, IL 60467  
Cook County  
PIN: 27-31-202-021-000-022  
Project Name & Location:

Exterior Elevations  
Drawing Name:  
Prototype Rls. 06/03/20  
Project No. 40200-91  
Type: LHS-D-V7ER  
A-201  
Scale: As Noted  
Drawing No.



2 East Elevation  
SCALE: 1/8" = 1'-0"

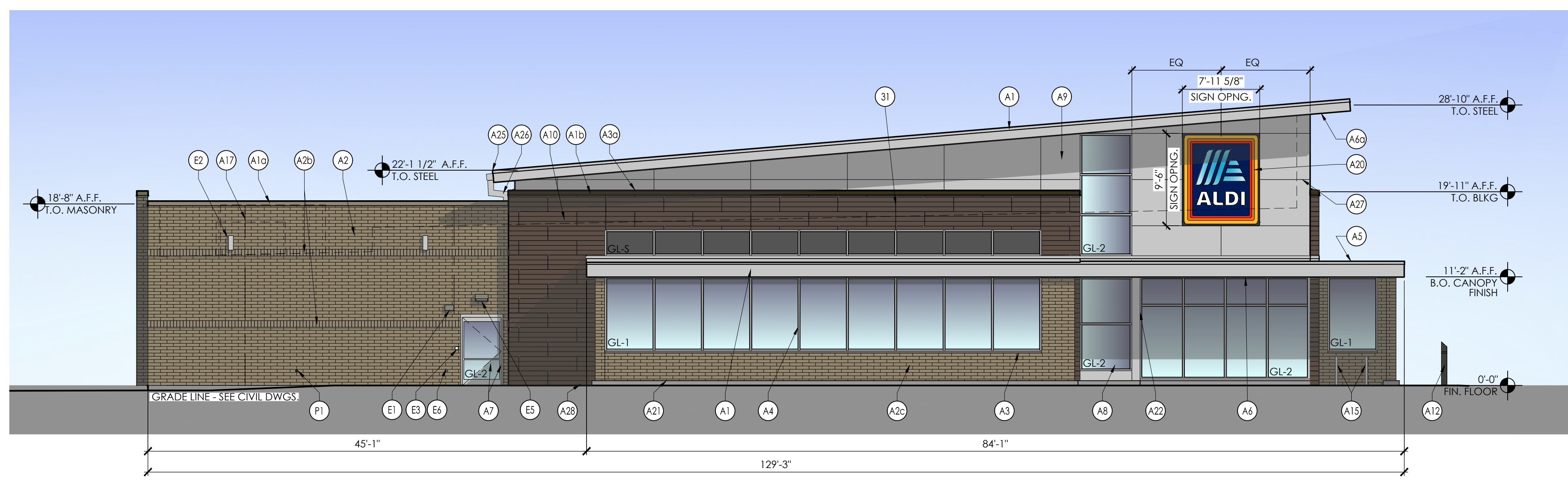
ARCHITECTURAL VARIATIONS - EAST ELEVATION			
DESCRIPTION	LENGTH	FACADE LENGTH	% OF FACADE
WINDOWS & CANOPY	99'-6"	163'-3"	61%
PROJECTIONS	85'-6"	153'-4"	56%

NOTE:  
1. ALUMINUM FRAMING:  
- EXTERIOR STOREFRONT: 2" X 4 1/2" THERMAL FRONT SET (SINGLE 45 DEGREE MULLION AT CORNERS)  
- EXTERIOR VERTICAL MESSAGE TOWER: 2 1/2" X 6" THERMAL FRONT SET CURTAIN WALL  
- SPANDREL ABOVE CANOPY: 2" X 4-1/2" NON-THERMAL FRONT SET.  
2. ALL MULLIONS TO BE EQUAL SPACED U.N.O.

GLAZING SCHEDULE	
KEY	KEY DESCRIPTION
GL-1	FULLY TEMPERED FLOAT GLASS
GL-2	LOW E, INSULATING GLASS (TEMPERED WHERE REQUIRED BY CODE)
GL-3	SPANDREL GLASS

SIGNAGE			
DESCRIPTION	QUANTITY	SQ. FT. PER SIGN	TOTALS
TOWER SIGN	2	74.9	149.8
TOTAL SIGNAGE			149.8

TOTAL SIGNAGE IS SHOWN FOR REFERENCE ONLY AND SHALL BE UNDER SEPARATE PERMIT SUBMITTAL.

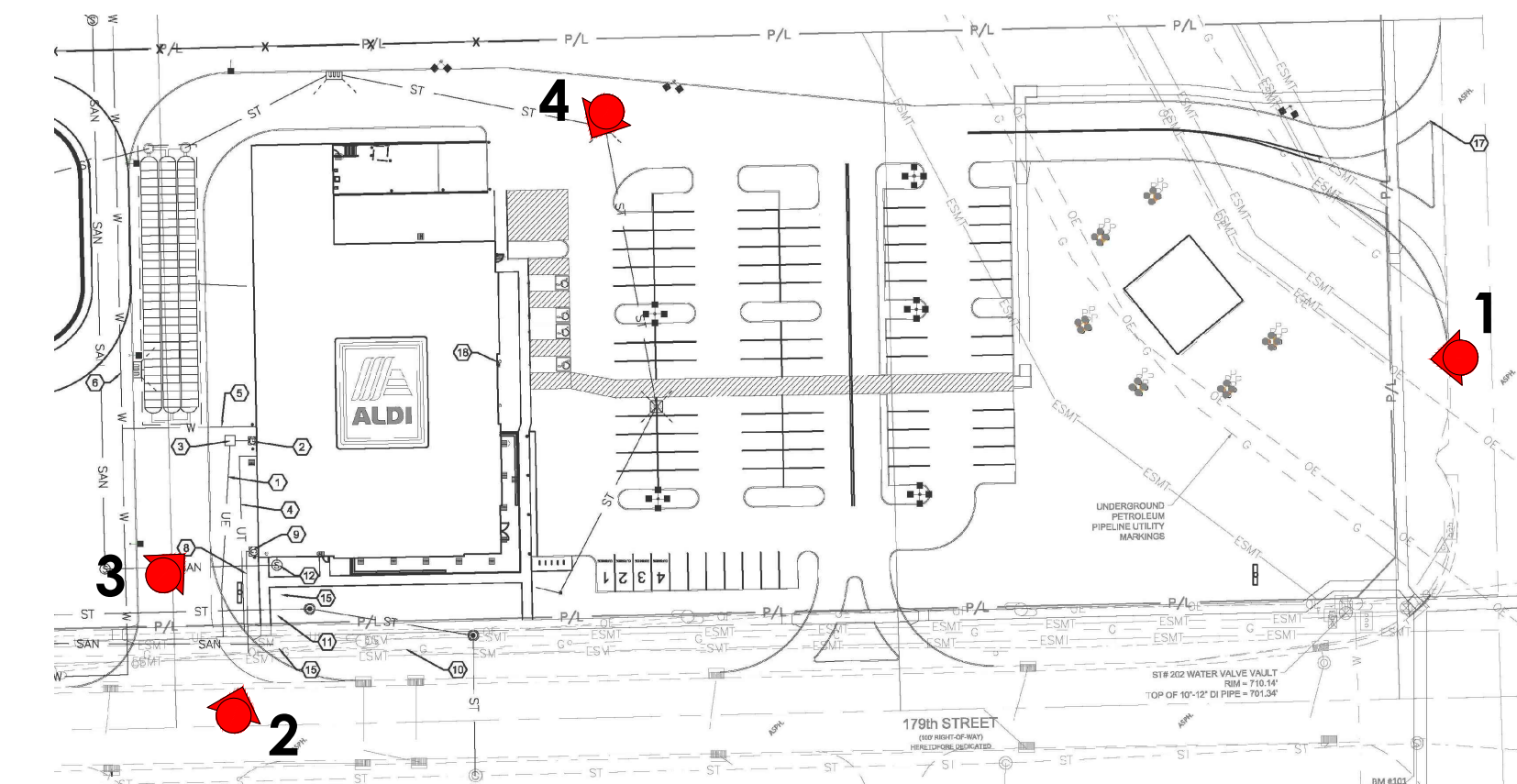


1 South Elevation  
SCALE: 1/8" = 1'-0"

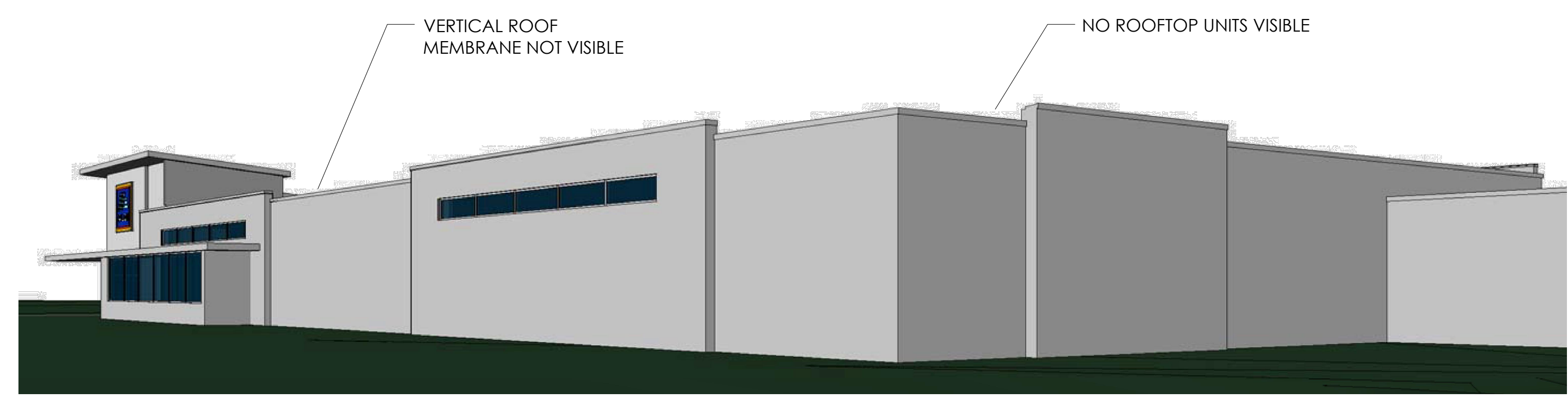
ARCHITECTURAL VARIATIONS - SOUTH ELEVATION			
DESCRIPTION	LENGTH	FACADE LENGTH	% OF FACADE
WINDOWS & CANOPY	84'-1"	129'-3"	65%
PROJECTIONS	58'-10"	119'-6"	49%

PLOTTED: 10/14/2021 4:55 PM

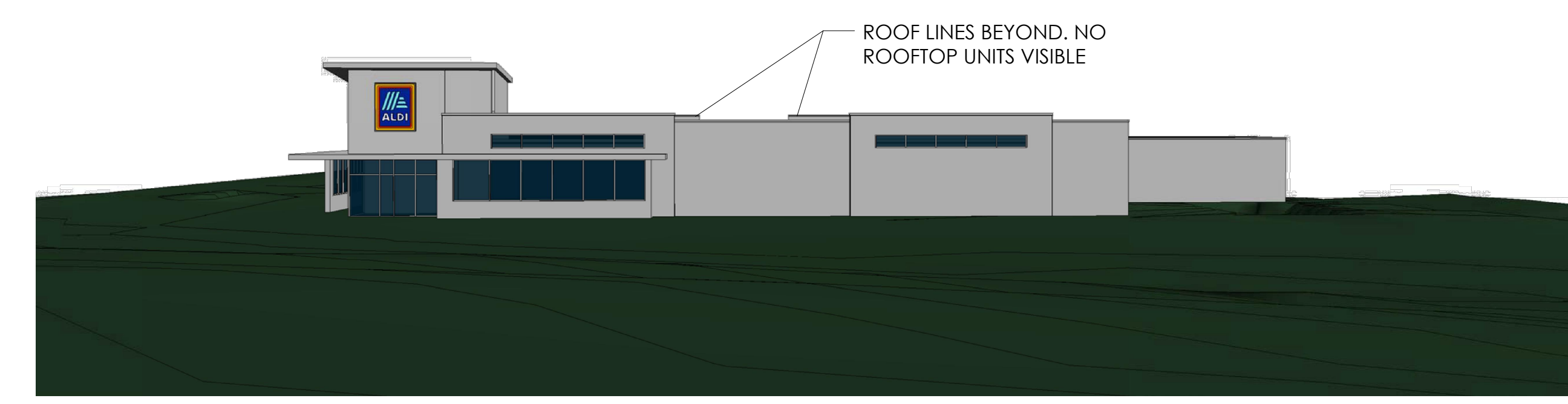




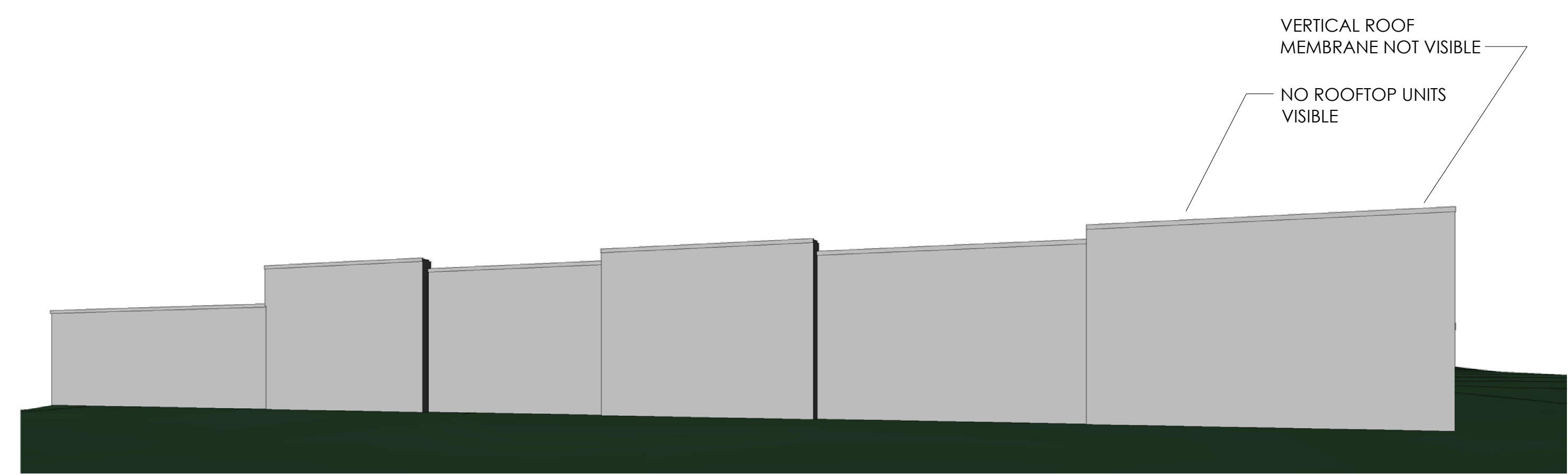
5 Reference Site Plan  
N.T.S.



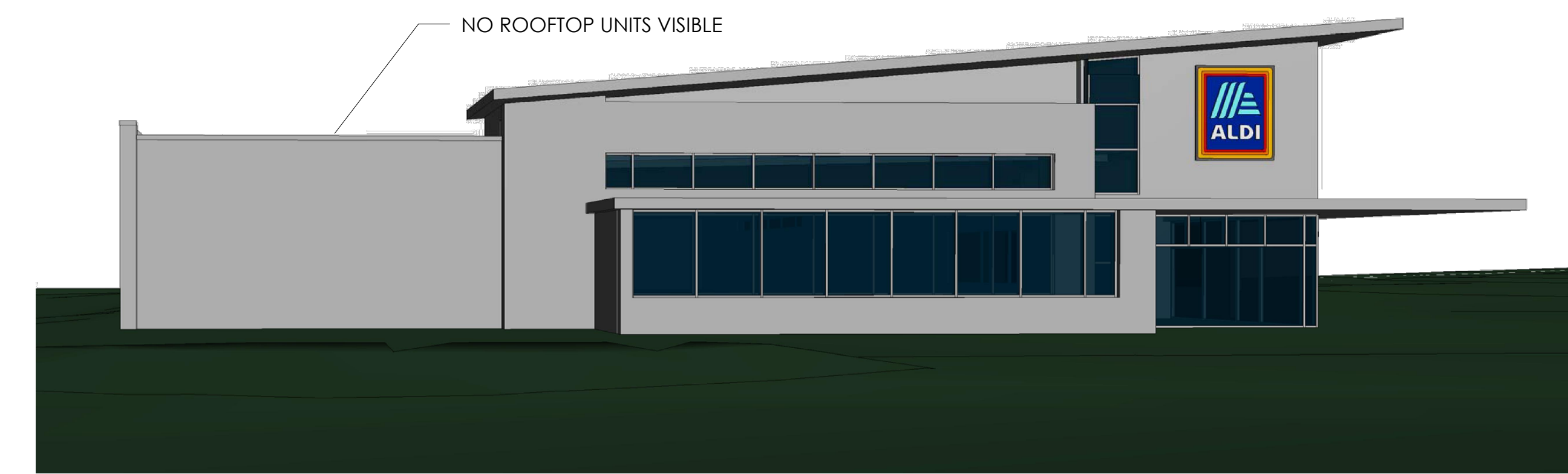
4 View 4



1 View 1



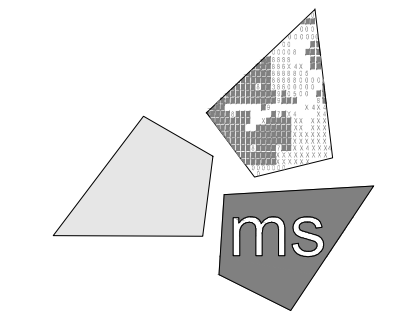
3 View 3



2 View 2

Issued:	Date:
Planning Submittal	05/28/21
Planning Response	08/06/21
Planning Response	10/15/21
Revisions:	Date:

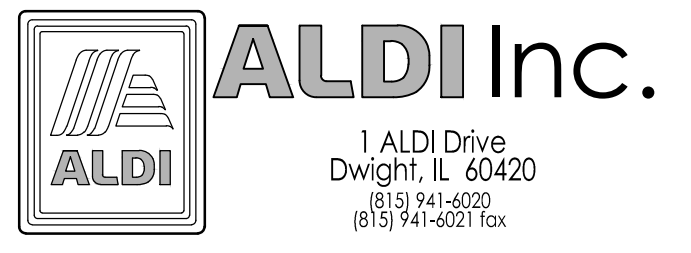
**DO NOT SCALE PLANS**  
Copying, Printing, Software and other processes required to produce these prints can stretch or shrink the actual paper or layout. Therefore, scaling of this drawing may be inaccurate. Contact ms consultants with any need for additional dimensions or clarifications.



**ms consultants, inc.**  
engineers, architects, planners  
2221 Schrock Road  
Columbus, Ohio 43229-1547  
phone 614.898.7100  
fax 614.898.7570

DRAWN BY:	MYG/MEM
REVIEWED BY:	NAL

Seal



ALDI Inc.  
Orland Park, IL  
179th Street & Wolf Road  
Orland Park, IL 60467  
Cook County  
PIN: 27-31-202-021-000-022  
Project Name & Location:

**Perspectives**

Drawing Name:	Prototype Rls.	Project No.
	06/03/20	40200-91
Type: LHSD-V7ER		
		A-203
Scale: As Noted		Drawing No.