



ORLAND  
PARK

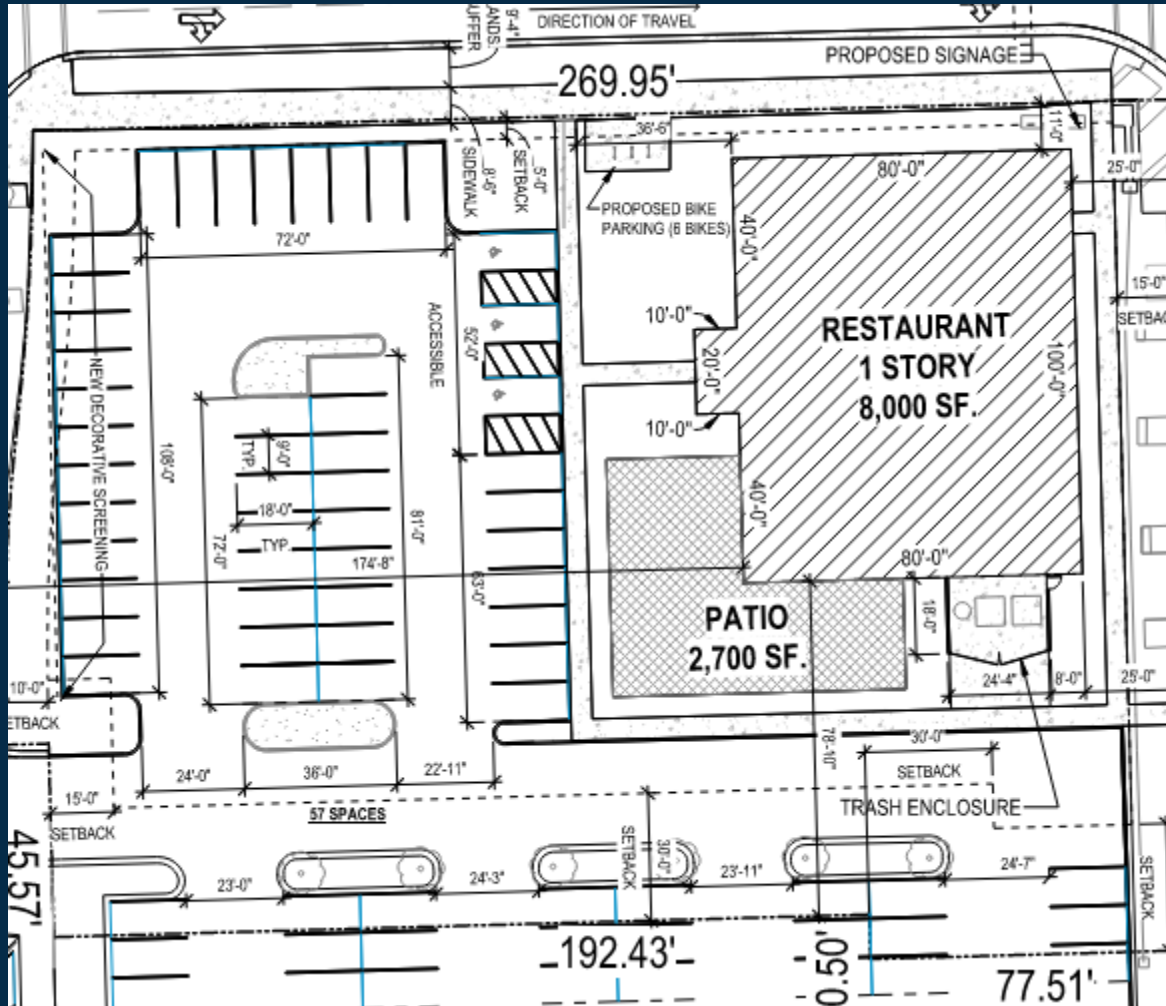
Weber Grill Restaurant  
Downtown Orland Park Parcel H  
September 2, 2025

Board of Trustees

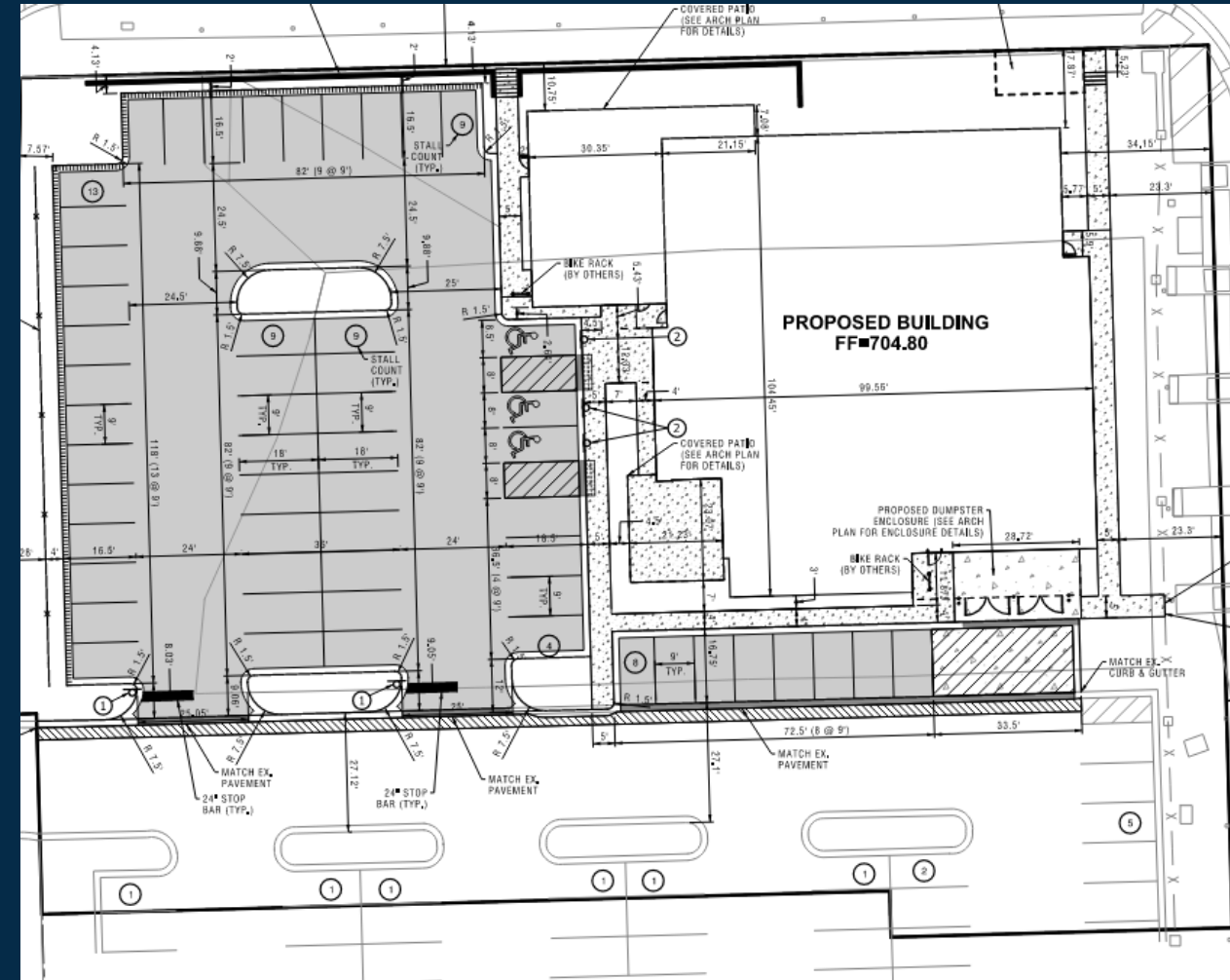
- Ordinance 5927 approved the Downtown Orland Park Planned Development. Each parcel must be reviewed for compliance with the approved Concept Plan.
- If a parcel is in substantial conformance with the approved Concept Plan, it does not need to go through the Plan Commission for review and approval.
- Staff finds that the proposed site plan and landscape plan for Weber Grill are consistent with the approved Planned Development and Development Agreement for Downtown Orland Park.



# PARCEL H CONCEPT PLAN



# WEBER GRILL PROPOSED PLAN



# WEBER GRILL BUILDING ELEVATIONS

## FRONT (WEST)

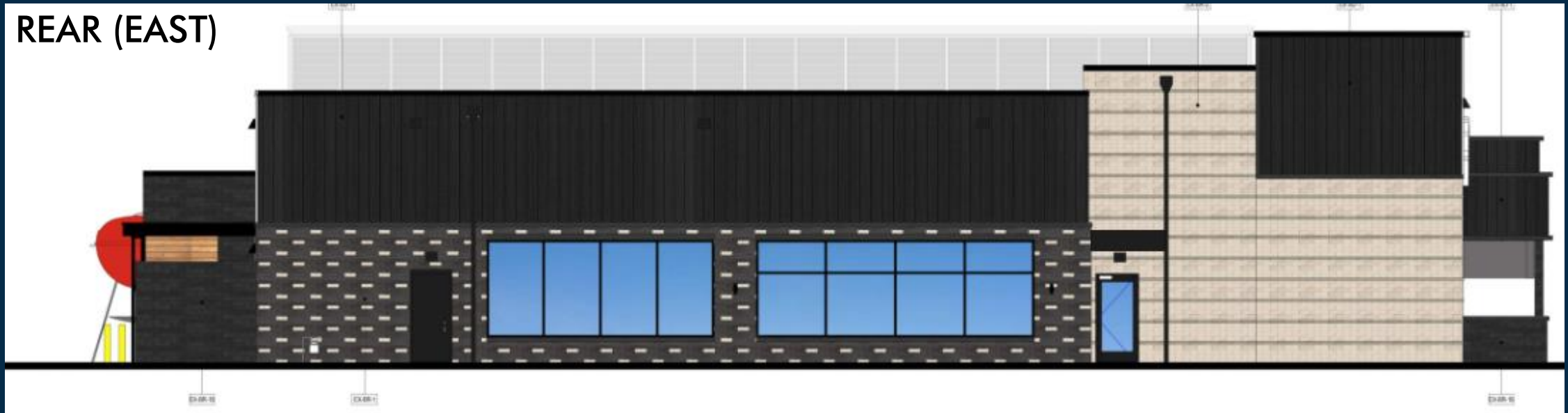


## SIDE (NORTH)



# WEBER GRILL BUILDING ELEVATIONS

REAR (EAST)



SIDE (SOUTH)

