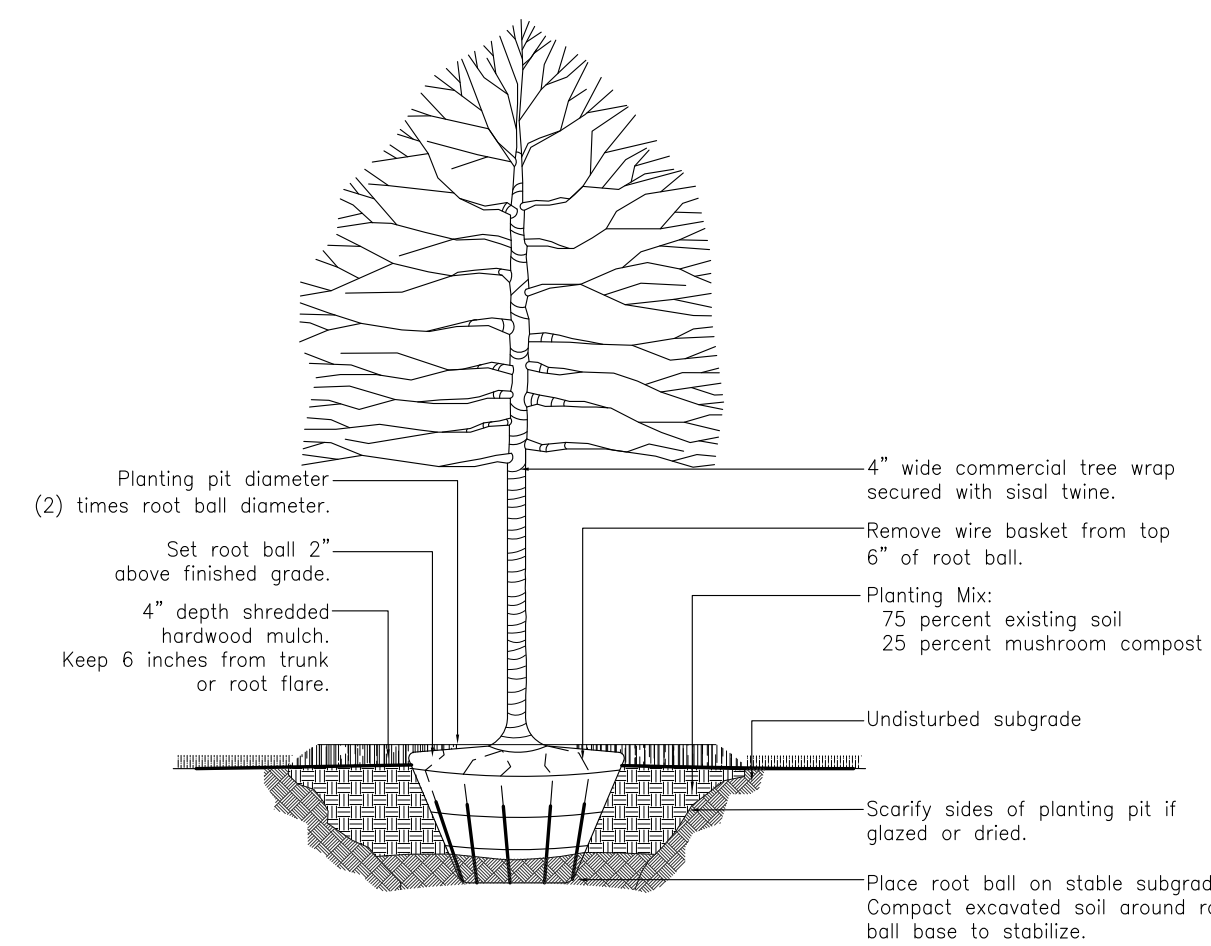
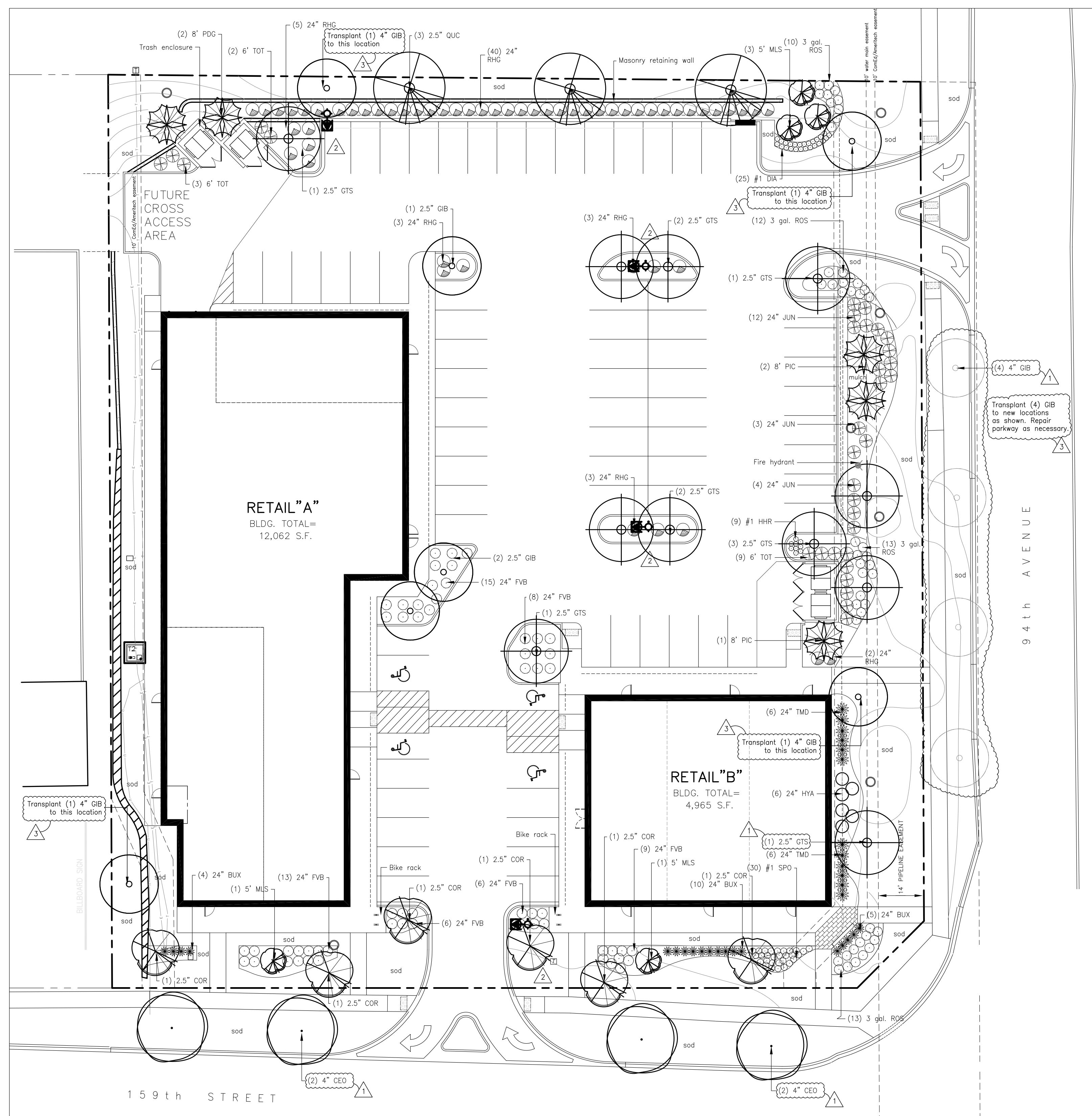
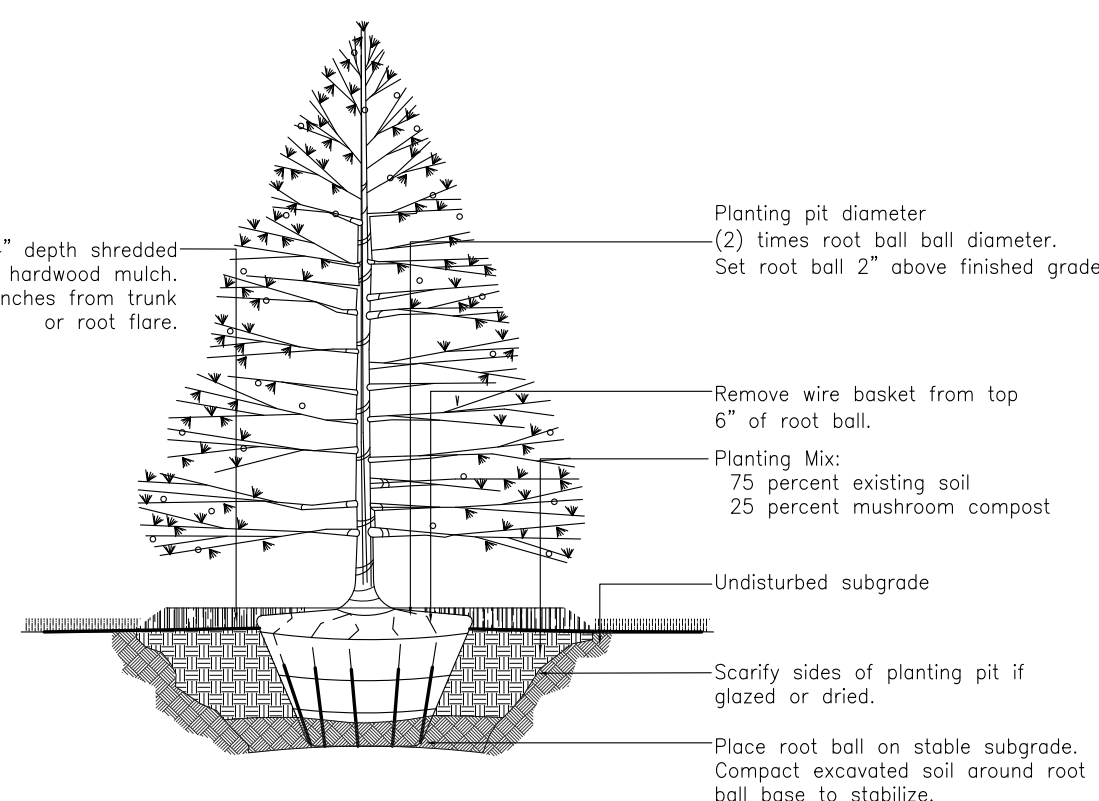


**BOARD APPROVED**

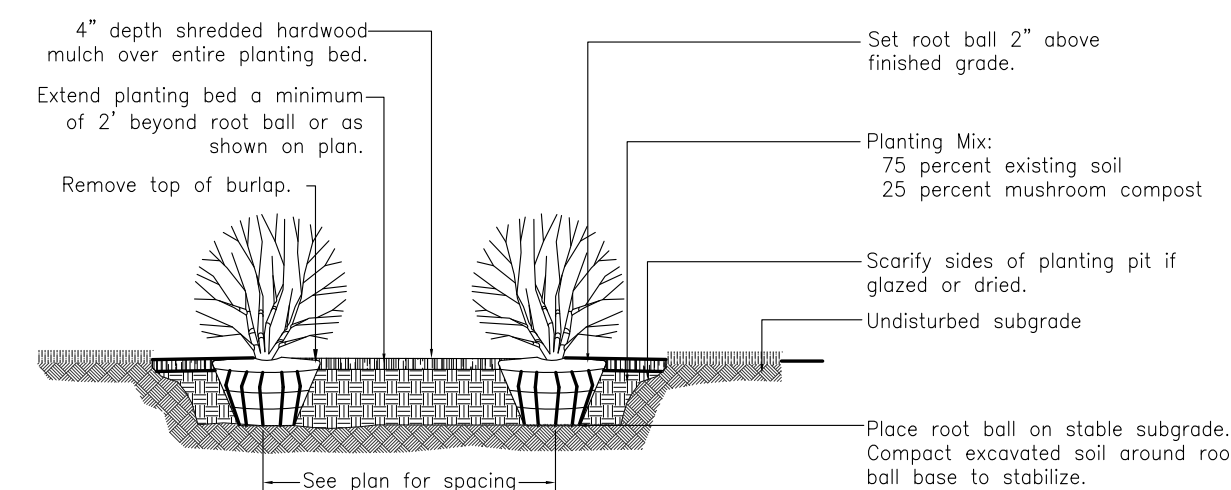
Case No: 2011-0544  
 Date: 12/3/12  
 W/Conditions: \_\_\_\_\_  
 W/Out Conditions: \_\_\_\_\_  
 VILLAGE OF ORLAND PARK



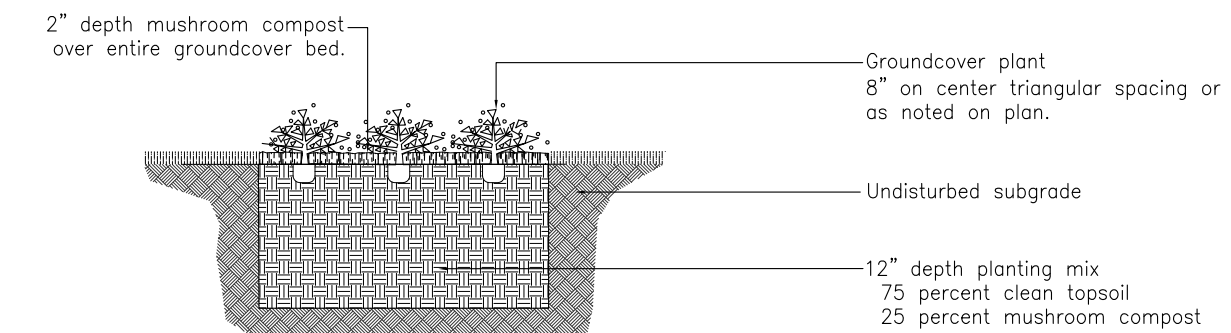
Detail  
**Deciduous Tree Planting**



Detail  
**Evergreen Tree Planting**



Detail  
**Shrub Planting**



Detail  
**Groundcover Planting**

**Plant List**

KEY	QTY.	SIZE	BOTANICAL NAME	COMMON NAME	REMARKS/SPACING
BUX	19	24"	Buxus 'Glencoe'	Chicagoland Green Boxwood	BB, 30" o.c.
CEO	4	3"	Celtis occidentalis 'Prairie Pride'	Prairie Pride Hackberry	BB, Central leader
COR	6	2.5"	Corylus americana	American Filbert	BB, Central leader
DIA	25	#1	Dianthus gratiopolitanus 'Firewitch'	Firewitch Cheddar Pinks	Container, 18" o.c.
FVB	57	24"	Forsythia viridissima 'Bronxensis'	Bronx Dwarf Forsythia	BB, 30" o.c.
GIB	1	4"	Ginkgo biloba 'Princeton Sentry'	Princeton Sentry Ginkgo	BB, Central leader
GIB	1	4"	Ginkgo biloba 'Princeton Sentry'	Ginkgo biloba 'Princeton Sentry'	BB, Central leader
GTS	1	2.5"	Gleditsia triacanthus var. inermis 'Skyline'	Skyline Thornless Honeylocust	BB, Central leader
HYA	6	24"	Hydrangea arborescens 'Annabelle'	Annabelle Smooth Hydrangea	BB, 4' o.c.
HHR	9	#1	Hemerocallis 'Happy Returns'	Happy Returns Daylily	Container, 18" o.c.
JUN	19	24"	Juniperus pfitzeriana 'Sea Green'	Sea Green Juniper	BB, 4' o.c.
MLS	5	5"	Malus sargentii	Sargent Crabapple	BB, Multi-stem
PIC	3	8"	Picea pungens	Colorado Green Spruce	BB, Natural form
PCD	2	8"	Picea glauca 'Densata'	Black Hills Spruce	BB, Natural form
QUC	3	2.5"	Quercus muhlenbergii	Chinkapin Oak	BB, Central leader
RHG	47	24"	Rhus aromatica 'Gro-Low'	Gro-Low Fragrant Sumac	BB, 4' o.c.
ROS	48	3 gal.	Rosa pavement 'Dwarf'	Dwarf Pavement Rose	Container, 30" o.c.
SPO	30	#1	Sporobolus heterolepis	Prairie Dropseed	Container, 3' o.c.
TOT	14	6"	Thuja occidentalis 'Technyii'	Mission Arborvitae	BB, spacing varies
TMD	12	24"	Taxus media 'Densiformis'	Dense Yew	BB, 4' o.c.

**Landscape Notes**

Size and grading standards of plant materials shall conform to the latest edition of ANSI Z60.1, AMERICAN STANDARD FOR NURSERY STOCK, by the American Nursery & Landscape Association.

All plant materials shall be nursery grown stock and shall be free of any deformities, diseases or insect damage. Any materials with damaged or crooked/disfigured leaders, bark abrasions, sunscald, insect damage, etc. are not acceptable and will be rejected.

Trees not exhibiting a central (or single) leader will be rejected unless called out in the Plant Schedule as multi-stem.

Inspection and approval of all plant materials by the Landscape Architect is required prior to installation. Any materials installed without approval may be rejected.

The Village may reject any plant materials that are diseased, deformed, or otherwise not exhibiting superior quality requirements, including those described in the Plant Schedule.

The Contractor is responsible for providing and installing all materials shown on the Plan in accordance with plan design and materials quantities.

The Contractor is responsible for protecting underground utilities, sidewalks and other previously constructed site improvements.