



BOARD APPROVED  
 CASE NO. 009-0080  
 DATE 2/16/09  
 W/CONDITIONS  
 W/CONDITIONS  
 See Sheets C-1 + D-1

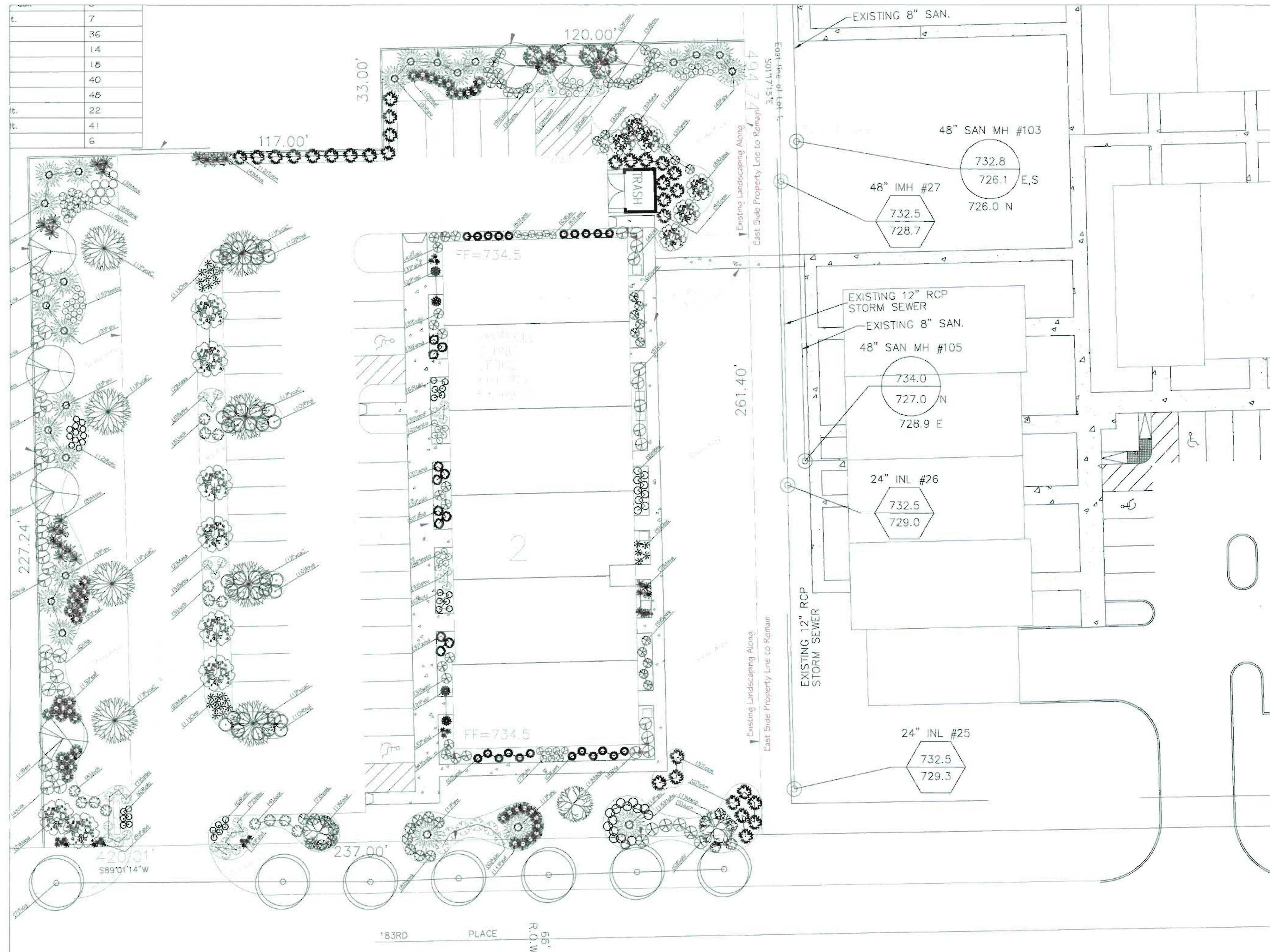
# Office Building 6-Unit Landscape Plan

Contents:

Sheet 1 : Cover

Sheet 2 : Overall Landscape Plan

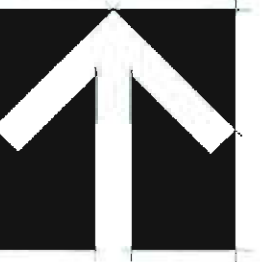
Sheet 3 : Planting Details



18316 Distinctive Dr.  
 Orland Park, IL 60467  
 Voice: 708.478.1515  
 Fax: 708.479.1800

NOTES:  
 ALL PLANT MATERIAL ON THIS PLANTING PLAN REPRESENTS THE INTENTION AND INTENSITY OF THE PROPOSED LANDSCAPE MATERIAL. THE EXACT SPECIES AND LOCATIONS MAY VARY IN THE FIELD DUE TO MODIFICATIONS IN THE SITE IMPROVEMENTS AND THE AVAILABILITY OF PLANT MATERIAL AT THE TIME OF INSTALLATION.  
 PRELIMINARY LANDSCAPE PLAN ALL AREAS AND DIMENSIONS ARE APPROXIMATE.

Revisions:  
 11.28.08(Rev. #1) G.B.  
 12.16.08(Rev. #2) G.B.  
 01.21.09(Rev. #3) G.B.



North

Landscape Plan  
 Office Building 6-Unit  
 183rd Place West of Wolf  
 Orland Park, Illinois

PREPARED FOR:  
 DISTINCTIVE COMPANIES  
 SEND \_\_\_\_\_  
 RE \_\_\_\_\_  
 W/CONDITIONS \_\_\_\_\_  
 W/CONDITIONS \_\_\_\_\_  
 DRAWN BY: G.B.  
 CHECKED BY: B.N.  
 NO: NA  
 DATE: 8.01.08  
 SCALE: 1" = 20'



SHEET  
 COVER  
 1 OF 3