

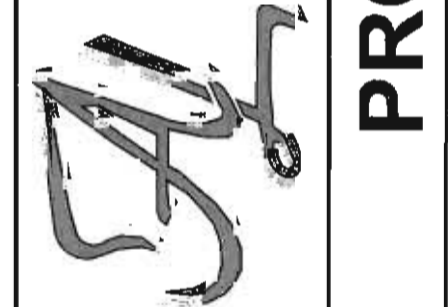


SAS ARCHITECTS & PLANNERS
 630 DUNDEE ROAD
 NORTHBROOK, ILLINOIS 60062
 847-564-8333 • FAX 847-564-9889
 WWW.SASARCH.COM

The LaSalle Group, Inc.
 545 E. John Carpenter Freeway, Suite 545
 Lewis, Texas 79062
 214-239-8400 • FAX 214-239-8401
 WWW.LASALLEGROUP.COM

BOARD APPROVED
 CASE NO. 2008-2-0256
 DATE 12/1/08
 W/ CONDITIONS
 W/O CONDITIONS

AUTUMN LEAVES ASSISTED LIVING
 ORLAND PARK, ILLINOIS
PROPOSED SITE PLAN



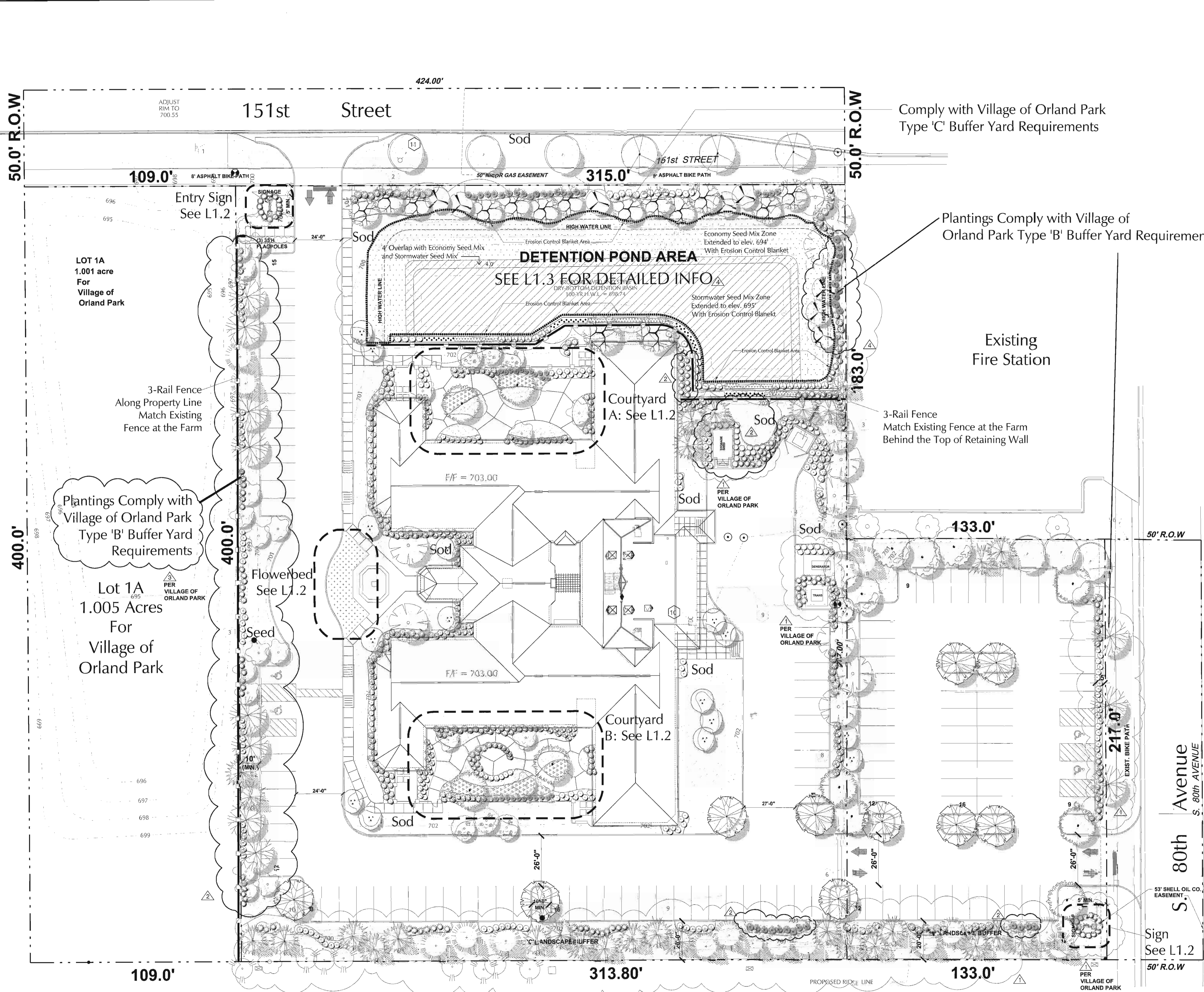
NO. DESCRIPTION DATE
 ADDENDUM#1 06/23/08
 ISSUE FOR CONSTRUCTION 07/21/08
 PER VILLAGE OF ORLAND PARK 08/27/08
 PER VILLAGE OF ORLAND PARK 10/20/08

REVISIONS
 SIGNATURE

TESKA
 Community Planning - Development Economics
 Site Design - Landscape Architecture
 224 North Dearborn
 Chicago, IL 60610
 312.467.2000
 312.467.2001

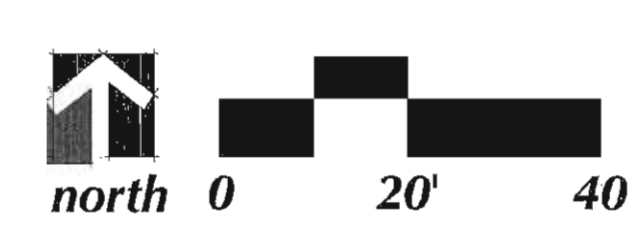
DRAWN BY YH APPROVED BY NRP
 JOB NO. 06073 DATE 03-17-2008
 SHEET NO.

L-1.1
 © 2007 SAS ARCHITECTS AND PLANNERS



PLANT LIST			
SYMBOL	QUANTITY	SIZE	BOTANICAL NAME
EXISTING			
(Symbol)			Existing Shade Tree
(Symbol)			Existing Evergreen
SHADE			
(Symbol)	11	2.5' cal	<i>Acer freemanii</i> Freeman Maple
(Symbol)	3	3' cal	<i>Celtis occidentalis</i> Common Hackberry
(Symbol)	7	3' cal	<i>Gleditsia triacanthos 'Skyline'</i> Skyline Honey Locust
(Symbol)	4	2.5' cal	<i>Acer saccharum 'Legacy'</i> Legacy Sugar Maple
(Symbol)	15	2.5' cal	<i>Quercus bicolor</i> Swamp White Oak
(Symbol)	11	2.5' cal	<i>Quercus rubra</i> Red Oak
(Symbol)	9	2.5' cal	<i>Tilia americana</i> American Linden
(Symbol)	10	2.5' cal	<i>Ulmus parvifolia 'Frontier'</i> Frontier Lacebark Elm
ORNAMENTAL			
(Symbol)	16	6' HT.	<i>Cercis canadensis</i> Eastern Redbud
(Symbol)	8	6' HT.	<i>Batalia nigra</i> River Birch
(Symbol)	20	6' HT.	<i>Malus sargentii</i> Sargent Crabapple
(Symbol)	6	6' HT.	<i>Magnolia stellata</i> Stella Magnolia
EVERGREEN			
(Symbol)	17	6' HT.	<i>Picea pungens</i> Colorado Spruce
(Symbol)	29	6' HT.	<i>Pinus nigra</i> Austrian Pine
SHRUB - TALL PLANTING AT 42' SPACING			
(Symbol)	125	36' HT.	<i>Viburnum dentatum</i> Arrowwood Viburnum
(Symbol)	137	36' HT.	<i>Cornus sericea</i> Red Twig Dogwood
(Symbol)	39	36' HT.	<i>Viburnum trilobum</i> American Cranberrybush
SHRUB - MEDIUM PLANTING AT 30' SPACING			
(Symbol)	101	30' HT.	<i>Syringa patula 'Miss Kim'</i> Miss Kim Lilac
(Symbol)	38	30' HT.	<i>Hydrangea quercifolia</i> Oakleaf Hydrangea
(Symbol)	93	30' HT.	<i>Evonymus alata 'Compacta'</i> Dwarf Burning Bush
(Symbol)	86	24' HT.	<i>Spiraea japonica 'Little Princess'</i> Little Princess Spiraea
(Symbol)	60	30' HT.	<i>Ribes alpinum</i> Alpine Currant
(Symbol)	22	24' HT.	<i>Forsythia x intermedia</i> Border Forsythia
(Symbol)	46	24' HT.	<i>Juniper chinensis 'Sea Green'</i> Sea Green Juniper
(Symbol)	16	24' HT.	<i>Colostomer divaricatus</i> Spreading Cottonaster
(Symbol)	13	30' HT.	<i>Salix purpurea 'Nana'</i> Dwarf Arctic Willow
(Symbol)	66	18' o.c. spread	<i>Parthenocissus tricuspidata</i> Boston Ivy
(Symbol)	26	3-5' sp. #5 cont.	<i>Juniperus sabina 'Broadmoor'</i> Broadmoor Juniper
(Symbol)	23	36' width	<i>Taxus media 'Densiformis'</i> Dense Yew
GROUND COVER AND PERENNIAL			
(Symbol)	608	2.25' pots @ 8' o.c. (38 pots/ft)	<i>Pachyzandra terminalis 'Green Carpet'</i> Green Carpet Japanese Spurge
(Symbol)	170	1 gal @ 18' O.C. (In North Courtyard Area)	<i>Rhus aromatica 'Gro-low'</i> Gro-low Sumac
(Symbol)	163	1 gal @ 18' O.C. (In South Courtyard Area)	<i>Rhus aromatica 'Gro-low'</i> Gro-low Sumac
(Symbol)	390	2 1/4" Pot @ 12' O.C.	Assorted Pots of Flowering Annuals
(Symbol)	4,055 s.y.		Sod 100T 1A Salt Tolerant Lawn Mixture 34% Kentucky Bluegrass 33% Fests Puccinellia Distans 11% Perennial Ryegrass 11% Dawson Red Fescue 11% Scalds Hard Fescue
(Symbol)	567 s.y.		Seed All seed need to be Hydroseeded 100T 1A Salt Tolerant Lawn Mixture
(Symbol)	900 s.y.		Economy Prairie Seed Mix JFNew Nursery 708 Roosevelt Road, Walkerton, IN 46574 (574)586-3400 See L-1.3 for Complete List
(Symbol)	950 s.y.		Stormwater Seed Mix JFNew Nursery 708 Roosevelt Road, Walkerton, IN 46574 (574)586-3400 See L-1.3 for Complete List
(Symbol)	1,710 s.y.		S75 Erosion Control Blanket Area

MASTER LANDSCAPE PLAN



663 L.F. 3-Rail Composite Fence